

University of Groningen

Recurrence rates of cutaneous squamous cell carcinoma of the head and neck after Mohs micrographic surgery vs. standard excision

van Lee, C. B.; Roorda, B. M.; Wakkee, M.; Voorham, Q.; Mooyaart, A. L.; de Vijlder, H. C.; Nijsten, T.; van den Bos, R. R.

Published in:
BRITISH JOURNAL OF DERMATOLOGY

DOI:
[10.1111/bjd.17188](https://doi.org/10.1111/bjd.17188)

IMPORTANT NOTE: You are advised to consult the publisher's version (publisher's PDF) if you wish to cite from it. Please check the document version below.

Document Version
Publisher's PDF, also known as Version of record

Publication date:
2019

[Link to publication in University of Groningen/UMCG research database](#)

Citation for published version (APA):

van Lee, C. B., Roorda, B. M., Wakkee, M., Voorham, Q., Mooyaart, A. L., de Vijlder, H. C., Nijsten, T., & van den Bos, R. R. (2019). Recurrence rates of cutaneous squamous cell carcinoma of the head and neck after Mohs micrographic surgery vs. standard excision: a retrospective cohort study. *BRITISH JOURNAL OF DERMATOLOGY*, 181(2), 338-343. <https://doi.org/10.1111/bjd.17188>

Copyright

Other than for strictly personal use, it is not permitted to download or to forward/distribute the text or part of it without the consent of the author(s) and/or copyright holder(s), unless the work is under an open content license (like Creative Commons).




The publication may also be distributed here under the terms of Article 25fa of the Dutch Copyright Act, indicated by the "Taverne" license. More information can be found on the University of Groningen website: <https://www.rug.nl/library/open-access/self-archiving-pure/taverne-amendment>.

Take-down policy

If you believe that this document breaches copyright please contact us providing details, and we will remove access to the work immediately and investigate your claim.

Downloaded from the University of Groningen/UMCG research database (Pure): <http://www.rug.nl/research/portal>. For technical reasons the number of authors shown on this cover page is limited to 10 maximum.

Recurrence rates of cutaneous squamous cell carcinoma of the head and neck after Mohs micrographic surgery vs. standard excision: a retrospective cohort study*

C.B. van Lee ¹, B.M. Roorda,² M. Wakkee ¹, Q. Voorham,³ A.L. Mooyaart,⁴ H.C. de Vijlder,⁵ T. Nijsten ¹ and R.R. van den Bos¹

¹Department of Dermatology and ⁴Department of Pathology, Erasmus Medical Centre Cancer Institute, Rotterdam, the Netherlands

²Department of Dermatology, University Medical Centre Groningen, Groningen, the Netherlands

³PALGA: The Nationwide Network and Registry of Histology and Cytopathology, Houten, the Netherlands

⁵Department of Dermatology, Isala Hospital, Zwolle, the Netherlands

Linked Editorial: Modley and Arron. *Br J Dermatol* 2019; **181**:233–234.

Summary

Correspondence

Renate R. van den Bos.

E-mail: r.vandenbos@erasmusmc.nl

Accepted for publication

5 September 2018

Funding sources

None.

Conflicts of interest

None to declare.

*Plain language summary available online

DOI 10.1111/bjd.17188

Background Recurrent cutaneous squamous cell carcinoma (cSCC) has been associated with an increased risk of local functional and aesthetic comorbidity, metastasis and mortality.

Objectives To compare the risk of recurrence between Mohs micrographic surgery (MMS) and standard excision for cSCC of the head and neck.

Methods This was a retrospective cohort study of all patients with a cSCC treated with MMS or standard excision at the departments of dermatology of a secondary or tertiary care hospital in the Netherlands between 2003 and 2012. To detect all recurrences, patients were linked to the Dutch pathology registry. To compare the risk of recurrence between MMS and standard excision, hazard ratios (HRs) were used adjusted for clinical tumour size > 2 cm and deep tumour invasion.

Results A total of 579 patients with 672 cSCCs were included: 380 cSCCs were treated with MMS and 292 with standard excision. The risk of recurrence was 8% (22 of 292) after standard excision during a median follow-up of 5.7 years [interquartile range (IQR) 3.5–7.8], which was higher than the 3% (12 of 380) after MMS during a median follow-up of 4.9 years (IQR 2.3–6.0). The cumulative incidence of recurrence was higher for standard excision than for MMS during the entire follow-up period of 8.6 years. Carcinomas treated with MMS were at a three times lower risk of recurrence than those treated with standard excision when adjusted for tumour size and deep tumour invasion (adjusted HR 0.31, 95% confidence interval 0.12–0.66).

Conclusions MMS might be superior to standard excision for cSCCs of the head and neck because of a lower rate of recurrence.

What's already known about this topic?

- Recurrent cutaneous squamous cell carcinoma has been associated with an increased risk of local functional and aesthetic comorbidity, metastasis and mortality.

What does this study add?

- Risk of recurrence was 8% after standard excision, which was higher than the 3% after Mohs micrographic surgery.
- Mohs micrographic surgery might be superior to standard excision for squamous cell carcinomas of the head and neck because of a lower rate of recurrence.

Cutaneous squamous cell carcinoma (cSCC) represent 20% of all skin cancers. SCC is the second most common skin cancer after basal cell carcinoma. At least one in 15 white people will develop a cSCC before the age of 85 and the incidence is still rising.^{1–4} These cSCCs rarely metastasize (4%) and the disease-specific death rate is low (2%).^{2,5} However, because of the frequent localization in the head and neck, treatment can lead to major functional and aesthetic comorbidity.

In the Netherlands, cSCC is commonly treated with standard excision. In the Dutch cSCC guideline, Mohs micrographic surgery (MMS) is noted as an alternative for standard excision for stage \geq II, especially when standard excision would lead to substantial functional or aesthetic comorbidity.⁶ In America it is generally accepted that MMS is indicated in high-risk cSCC and the American 'appropriate use criteria for MMS' state that it is also appropriate to use MMS for stage I cSCC.⁷

MMS is superior to standard excision for facial aggressive or recurrent basal cell carcinomas, because of the low recurrence rate and maximum preservation of healthy tissue.^{8–10} Studies on cSCC recurrence rates after surgery are sparse and it therefore remains unclear if MMS is better than standard excision for cSCC. This large retrospective cohort study was conducted to determine if the risk of cSCC recurrence is lower after MMS than standard excision.

Materials and methods

This was a retrospective, comparative cohort study of cSCC treated with MMS or standard excision at the dermatology departments of a tertiary (Erasmus Medical Centre Cancer Institute) or a secondary care hospital (Isala Hospital), both in the Netherlands, between 2003 and 2012. The study was exempted from approval by both institutional review boards.

Inclusion criteria were all histologically confirmed invasive cSCCs of the head and neck that were completely excised with MMS or standard excision and multiple cSCCs per patient were included. The cSCCs that were incompletely excised with MMS or standard excision were excluded from the analysis and described separately. For standard excision, incomplete excision was postoperatively defined by a pathologist with the standard vertical bread-loaf technique if cSCC was detected on the excision margin (stage I) or if a tumour-free margin was \leq 2 mm (\geq stage II).⁶ For MMS, incomplete excision was postoperatively defined by a pathologist within the routine quality check if cSCC was detected on the outermost fresh frozen Mohs slide. The study involved four pathologists; all had special training in skin cancer pathology and MMS.

The inclusion period differed per treatment modality and study centre. Patients treated with MMS were included at the tertiary care hospital between 1 January 2009 and 31 December 2012 because in the Netherlands MMS for cSCC was only offered at the tertiary care hospital since 2008. Inclusion started from 2009 to exclude the effect of a presumed learning curve during the first MMS year and continued until 2012 to have at least 5 years of follow-up. To prevent selection bias, cSCCs treated with standard excision were included at the

tertiary care hospital between 1 January 2003 and 31 December 2007. At the secondary care hospital, standard excision was the only surgical treatment option during the entire study period and patients were included from 1 January 2008 to 31 December 2012. Selection bias because of the different inclusion periods was not expected because the Dutch cSCC guideline did not change during the entire study period (2003–2012).⁶ In both hospitals, it was recommended that patients should visit a dermatologist routinely postoperatively for the following 5 years.⁶

The following variables were extracted from electronic patient files including pathology reports and standardized digital MMS files:¹¹ patient age and sex, tumour location (in the H-zone), recurrence before MMS or standard excision, clinical tumour size > 2 cm, defect size > 2 cm and deep tumour invasion (i.e. beyond the subcutaneous fat). These tumour characteristics were recorded because they have been associated with a high risk of cSCC recurrence.¹² Vital status, including date of death, was obtained from the Dutch Municipal Population Register until 1 August 2017.

Study outcome

The main outcome was cSCC recurrence. Recurrence was defined as a histologically proven cSCC in or within 1 cm of the scar. Furthermore, histologically confirmed cSCC metastasis was recorded. To detect all histopathologically proven recurrences and metastases, patients were linked to the nationwide network and registry of histology and cytopathology (Dutch acronym: PALGA) on 1 August 2017.¹³ In the Netherlands, all histopathology reports from every biopsy, excision or MMS procedure are recorded in this database.

Follow-up

As explained above, the inclusion period for standard excision started earlier (2003) than for MMS (2009). Therefore, the median follow-up time after standard excision was suspected to be longer than after MMS. This was accepted because all patients had a follow-up of at least 5 years and the majority of cSCC recurrences occur within 5 years.¹⁴ The maximum follow-up time for patients treated with standard excision was restricted to the maximum follow-up possible for patients treated with MMS (i.e. 8.6 years, which was the time between the start of MMS inclusion on 1 January 2009 until the PALGA search on 1 August 2017).

Surgical procedures

Standard excision was performed in a standard manner by a dermatologist ($n = 7$), or a resident ($n = 10$) under supervision of a dermatologist. The cSCCs were excised with margins of 5 mm for stage I and 10 mm for \geq stage II.⁶ Specimens were postoperatively assessed by a pathologist with the standard vertical bread-loaf technique and haematoxylin and eosin staining.

MMS was performed in a standard manner by experienced Mohs surgeons ($n = 6$, all dermatologists certified by the European Society for Micrographic Surgery), or a resident ($n = 10$) under supervision of a Mohs surgeon. The cSCCs were excised with a minimal margin of clinically tumour-free tissue. The sample was directly compressed, frozen and sliced horizontally by a trained MMS technician. The entire excision margins were microscopically examined on the fresh frozen slides by a Mohs surgeon. Residual tumour was mapped and subsequently excised. The procedure was repeated until tumour clearance was achieved.

Statistics

Differences between MMS and standard excision regarding the studied variables were assessed with an exact test for binary variables and with an independent sample *t*-test with bootstrapping for continuous variables, to take within-patient correlation into account. The length of follow-up per patient was calculated as the number of years between surgery and end of study (linkage to PALGA on 1 August 2017) or date of recurrence or date of death, whichever occurred first. Difference between the rate of recurrence after MMS and standard excision was assessed with a cumulative incidence curve to take into account the competing risk of death. Comparison of the risk of recurrence after MMS and standard excision was assessed with univariable and multivariable Cox proportional hazards regression adjusted for clinical tumour size > 2 cm and deep tumour invasion. The 95% confidence intervals (CIs) and *P*-values for the univariable and multivariable regression were obtained by applying bootstrapping to take within-patient correlation into account. The proportional hazards assumption was confirmed by log minus log plots. *P*-values less than 0.05 (2-sided) were considered significant. SPSS 24.0 for Windows (IBM, Armonk, NY, U.S.A.) and SAS 9.4

(SAS Institute Inc., Cary, NC, U.S.A.) were used for statistical analyses.

Results

In total, 631 patients with 738 cSCCs of the head and neck were reviewed of which 383 cSCCs were treated with MMS and 355 with standard excision (Fig. 1). Of the 355 cSCCs that were treated with standard excision, 122 (34%) were included at the tertiary care hospital and 233 (66%) at the secondary care hospital. The baseline characteristics, the rate of incompletely excised cSCCs and the rate of recurrences did not differ between the included cases at the tertiary care hospital and secondary care hospital.

Of the 738 cSCCs, three treated with MMS and 63 treated with standard excision were excluded because of an incomplete cSCC excision. All three treated with MMS were additionally completely excised with re-MMS and did not recur or metastasize. No additional treatment was given in 21% (13 of 63) of the incomplete standard excision cases, after which 38% (5 of 13) developed a recurrence and 15% (2 of 13) metastasized. An additional treatment was given in 79% (50 of 63) of the incomplete standard excision cases (43 standard excision, five radiotherapy, two MMS). After a re-standard excision, 21% (9 of 43) developed a recurrence and 2% (1 of 43) metastasized.

Baseline characteristics

A total of 579 patients [401, 69% men, overall median age 76 years, interquartile range (IQR) 69–82] with 672 completely excised cSCCs were included; 380 cSCCs were treated with MMS and 292 with standard excision. There were 513 patients with one included cSCC, 50 patients with two cSCCs, eight patients with three cSCCs, six patients with four cSCCs, one patient with five cSCCs and one patient with six cSCCs.

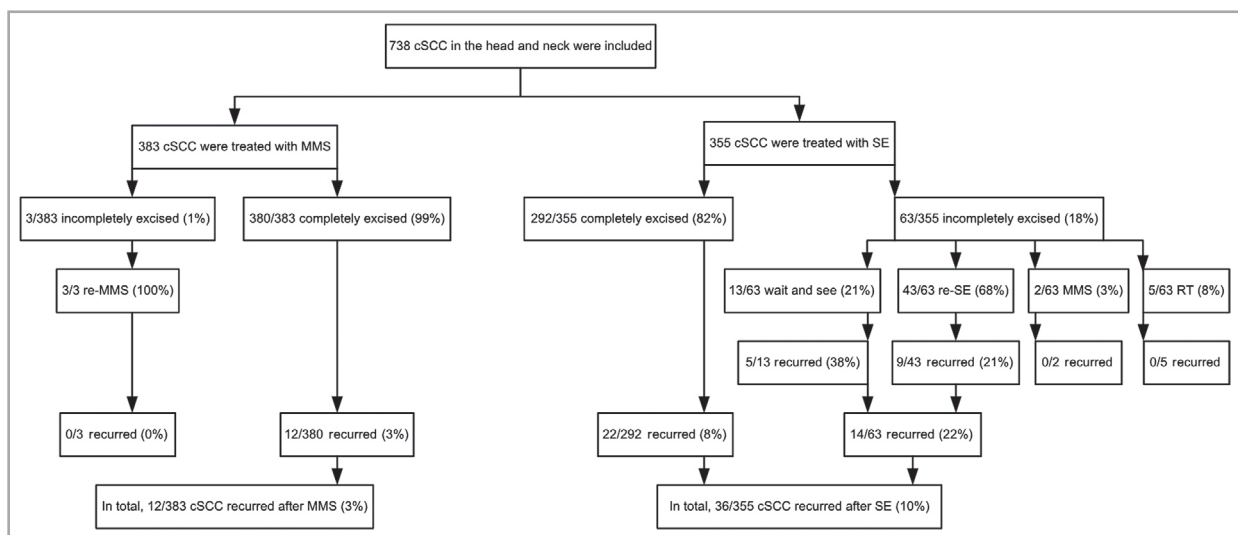


Fig 1. Flowchart of the cutaneous squamous cell carcinomas (cSCCs) of the head and neck that were treated with Mohs micrographic surgery (MMS) or standard excision (SE). RT, radiotherapy.

Table 1 Differences between cutaneous squamous cell carcinomas (cSCCs) that were treated with Mohs micrographic surgery or standard excision regarding the characteristics and events during follow-up

Characteristic	Mohs micrographic surgery (n = 380)	Standard excision (n = 292)	P-value
Sex ^a			
Men	262 (69)	219 (75)	0.101
Women	118 (31)	73 (25)	
Age, years: median (IQR) ^a	76 (69–81)	76 (68–82)	0.694
Anatomical location			
Head and neck, not H-zone	153 (40)	161 (55)	< 0.001
H-zone	227 (60)	131 (45)	
Surgical history			
Primary cSCC	311 (82)	266 (91)	0.001
Previously recurrent cSCC	69 (18)	26 (9)	
Tumour size			
≤ 2 cm in diameter	256 (67)	274 (94)	< 0.001
> 2 cm in diameter	124 (33)	18 (6)	
Defect size			
≤ 2 cm in diameter	231 (61)	93 (32)	< 0.001
> 2 cm in diameter	149 (39)	199 (68)	
Tumour invasion			
Dermis	153 (40)	250 (86)	< 0.001
Deep	227 (60)	42 (14)	
Events during follow-up			
Follow-up, years: median (IQR)	4.9 (2.3–6.0)	5.7 (3.5–7.8)	0.001
Recurrence			
No	368 (97)	270 (92)	0.013
Yes	12 (3)	22 (8)	
Metastasis			
No	377 (99)	287 (98)	0.304
Yes	3 (1)	5 (2)	
Deceased (cause unknown)			
No	209 (55)	133 (46)	0.016
Yes	171 (45)	159 (54)	

Values are n (%) unless otherwise stated; percentages were rounded. Numbers in the table represent cSCCs. IQR, interquartile range. ^aA total of 579 patients with 672 cSCCs were included.

For MMS, most cSCCs were located on the nose (22%), forehead (19%) and scalp (17%) followed by the auricular region (15%), cheek and maxilla (11%), periocular region (8%), perioral region and lips (6%) and neck (2%). For standard excision, most cSCCs were located on the auricular region (24%), scalp (21%), cheek and maxilla (20%) and forehead (20%), followed by the nose (7%), perioral region and lips (5%), neck (3%) and periocular region (2%).

The cSCCs treated with MMS were significantly more often: located in the H-zone, previously recurrent tumours, clinically > 2 cm and more often had deep tumour invasion (Table 1). Defects after MMS were more often ≤ 2 cm than after standard excision. Median number of Mohs stages needed for tumour clearance was one (range 1–4).

Cutaneous squamous cell carcinoma recurrence

The risk of recurrence was 8% (22 of 292) after standard excision during a median follow-up of 5.7 years (IQR 3.5–7.8), which was higher than the 3% (12 of 380) after MMS during a median follow-up of 4.9 years (IQR 2.3–6.0). The cumulative incidence of recurrence was higher for standard

excision than for MMS during the entire follow-up period of 8.6 years (Figure 2).

After adjusting for tumour size and deep tumour invasion, cSCCs treated with MMS were at a three times lower risk of recurrence than standard excision [adjusted hazard ratio (HR) 0.31, 95% CI 0.12–0.66] (Table 2). Of the 12 cSCC recurrences after MMS, 33% (4 of 12) were located in the H-zone, 50% (6 of 12) were previously recurrent tumours, 58% (7 of 12) had a clinical tumour size > 2 cm, 67% (8 of 12) had a defect size > 2 cm, 67% (8 of 12) had a deep tumour invasion and none metastasized. Of the 22 cSCC recurrences after standard excision, 32% (7 of 22) were located in the H-zone, 9% (2 of 22) were previously recurrent tumours, 9% (2 of 22) had a clinical tumour size > 2 cm, 77% (17 of 22) had a defect size > 2 cm, 27% (6 of 22) had a deep tumour invasion and 5% (1 of 22) metastasized.

Discussion

Until now, a wide range of cSCC recurrence rates after MMS (0–6%) and standard excision (0–15%) has been reported.¹⁵ One systematic review with pooled analysis by Lansbury *et al.*

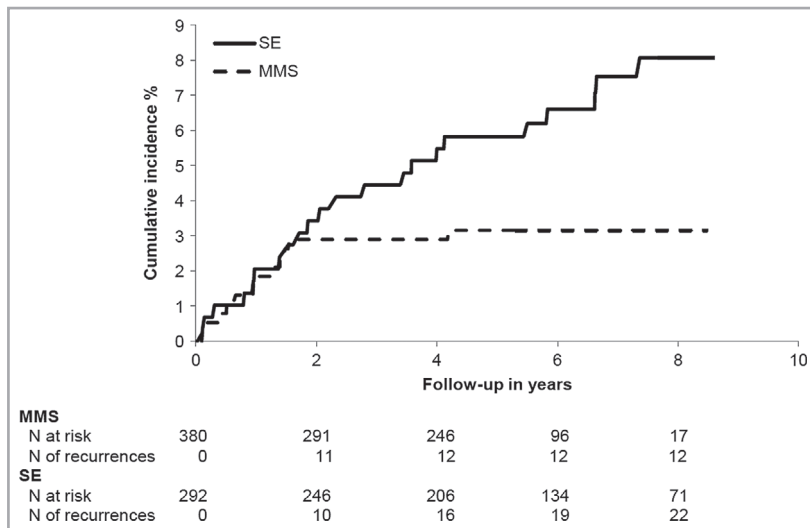


Fig 2. Cumulative incidence curve of recurrence of cutaneous squamous cell carcinoma of the head and neck after Mohs micrographic surgery (MMS) compared with standard excision (SE).

Table 2 Recurrence risk of cutaneous squamous cell carcinoma (cSCC) of the head and neck

	Total cSCC (n = 672)	Recurred cSCC (n = 34)	Univariable Cox regression		Multivariable Cox regression	
			HR (95% CI)	P-value	HR (95% CI)	P-value
Intervention						
Standard excision	292 (43)	22 (65)	Reference	0.031	Reference	0.004
Mohs micrographic surgery	380 (57)	12 (35)	0.49 (0.23–0.94)		0.31 (0.12–0.66)	
Tumour size, diameter						
≤ 2 cm	530 (79)	26 (76)	Reference	0.346	Reference	0.119
> 2 cm	142 (21)	8 (24)	0.70 (0.32–1.82)		1.89 (0.64–4.06)	
Tumour invasion						
Dermis	403 (60)	20 (59)	Reference	0.593	Reference	0.164
Deep	269 (40)	14 (41)	0.82 (0.41–1.69)		1.80 (0.71–4.13)	

Values are n (%) unless otherwise stated; percentages were rounded. HR, hazard ratio; CI, confidence interval.

showed a lower, but nonsignificant average recurrence rate after MMS (3.0%, 95% CI 2.2–3.9%; 10 studies, n = 1572) compared with standard excision (5.4%, 95% CI 2.5–9.1%; 12 studies, n = 1144).¹⁵ However, the included studies had heterogeneous inclusion criteria, small numbers of included patients and a short follow-up duration with limited information on those lost to follow-up.

Our study showed a lower recurrence risk of cSCC of the head and neck after MMS (3%) than after standard excision (8%) during a median follow-up of 5 years (IQR 3–7). Although the median follow-up after standard excision was longer (5.7 years, IQR 3.5–7.8) than after MMS (4.9 years, IQR 2.3–6.0), the cumulative incidence of recurrence was higher for standard excision than for MMS during the entire follow-up period of 8.6 years (Fig. 2). When adjusted for tumour size and deep tumour invasion, cSCCs treated with MMS were found to be at a three times lower risk of recurrence than standard excision (adjusted HR 0.31, 95% CI 0.12–0.66) (Table 2). The difference in risk of recurrence

was probably underestimated because we could not adjust for all high-risk tumour characteristics. However, because of confounding by indication of MMS (i.e. selection bias), cSCCs treated with MMS were more often high-risk tumours than cSCCs treated with standard excision (Table 1).

The lower risk of recurrence after MMS than standard excision is most likely because of the fact that with MMS the entire excision margin is histologically reviewed. In contrast, with standard excision only a small portion of the excision margin is histologically reviewed, increasing the risk of a false negative result (i.e. an undetected incomplete cSCC excision).

The excluded 18% of incompletely excised cSCCs with standard excision in our study was higher than expected based on the study of Lansbury *et al.*, which showed a pooled average estimate of 8.8% (95% CI 5.4–13.0%; 11 studies, n = 2343).¹⁵ However, the included studies had heterogeneous inclusion criteria (e.g. cSCC on the head and neck and elsewhere) and used a wide range of excision margins (2 to > 10 mm, or unspecified). A recent retrospective review of

cSCCs of the head and neck reported 14% (51 of 364) of incompletely excised cSCCs. However, this study included invasive as well as *in situ* cSCCs.¹⁶

We found an extremely high recurrence rate (38%) and metastasis (15%) for incompletely excised cSCCs that did not receive an additional treatment. This underlines the importance of a complete cSCC excision. In only 1% of the MMS cases, an incomplete cSCC excision was found with the routine postoperative external histological quality check. This shows that the Mohs surgeons were very well able to detect cSCC on fresh frozen Mohs slides and that MMS is an excellent treatment to achieve tumour clearance.

Another advantage of MMS compared with standard excision, beside the lower risk of cSCC recurrence and the excellent tumour clearance, is the maximum preservation of healthy tissue.¹⁰ Consistently, we found that after MMS, defects were more often ≤ 2 cm (60%) compared with after standard excision (32%), while cSCCs treated with MMS were more often > 2 cm (33%) compared with standard excision (6%).

Strengths of this study are the comparative design, the large number of included cSCCs, the precise detection of recurrences (elimination of loss to follow-up by the use of PALGA), the long-term follow-up and the use of the cumulative incidence curve. This study shows that it is important to report follow-up data of at least 5 years: after standard excision, 77% (17 of 22) of the recurrences occurred within 5 years whereas only 45% (10 of 22) of the recurrences occurred within the first 2 years.

Our study was limited to a retrospective design. As a result of missing data, we could not determine: tumour stage (mm of tumour invasion, perineural invasion, lymphovascular invasion and cSCC differentiation), disease-specific death, and high-risk patients (i.e. immunosuppressed patients). We excluded all SCCs that were treated with MMS during the first year that MMS was performed for SCC at the tertiary care hospital. It is uncertain if the learning period of 1 year was long enough to exclude the presumed bias of a learning curve.

It is uncertain if our results can be generalized to other international dermatology and MMS services. Firstly, in this study MMS and standard excision were performed by dermatologists, residents and Mohs surgeons who were trained in the Netherlands. Secondly, the recommended excision margins in the Dutch cSCC guideline are wider (i.e. 5 mm for stage I and 10 mm for \geq stage II) than the British and American guidelines recommend (i.e. 4 mm for stage I and 6 mm for \geq stage II).^{6,17,18}

In conclusion, this study shows that MMS is an excellent treatment option for patients with cSCC of the head and neck. Although the results imply superiority of MMS compared with standard excision for cSCC of the head and neck as a result of fewer recurrences, conclusions must be made carefully because of the limitations of the study design.

Acknowledgments

We are indebted to Loes M. Zandwijk-Hollestein for her statistical advice (Department of Dermatology, Erasmus Medical Centre Cancer Institute, Rotterdam, the Netherlands).

References

- 1 Rogers HW, Weinstock MA, Harris AR *et al.* Incidence estimate of nonmelanoma skin cancer in the United States, 2006. *Arch Dermatol* 2010; **146**:283–7.
- 2 Karia PS, Han J, Schmults CD. Cutaneous squamous cell carcinoma: estimated incidence of disease, nodal metastasis and deaths from disease in the United States, 2012. *J Am Acad Dermatol* 2013; **68**:957–66.
- 3 Hollestein LM, Vries E, Nijsten T. Trends of cutaneous squamous cell carcinoma in the Netherlands: Increased incidence rates, but stable relative survival and mortality 1989–2008. *Eur J Cancer* 2012; **48**:2046–53.
- 4 Holterhues C, Vries E, Louwman MW *et al.* Incidence and trends of cutaneous malignancies in the Netherlands, 1989–2005. *J Invest Dermatol* 2010; **130**:1807–12.
- 5 Brantsch KD, Schonfisch B, Trilling B *et al.* Analysis of risk factors determining prognosis of cutaneous squamous cell carcinoma: a prospective study. *Lancet Oncol* 2008; **9**:713–20.
- 6 Krekels GAM, van Berlo CLH, van Beurden M *et al.* Richtlijn Plaveiselcelcarcinoom van de Huid. Utrecht: Nederlandse Vereniging voor Dermatologie en Venereologie, 2012. (in Dutch).
- 7 Connoll SM, Baker DR, Coldiron BM *et al.* AAD/ACMS/ASDSA/ASMS 2012 appropriate use criteria for Mohs micrographic surgery: a report of the American Academy of Dermatology, American College of Mohs Surgery, American Society for Dermatologic Surgery Association and the American Society for Mohs Surgery. *J Am Acad Dermatol* 2012; **67**:531–50.
- 8 Smeets NWJ, Krekels GAM, Ostertag JU *et al.* Surgical excision vs Mohs' micrographic surgery for basal-cell carcinoma of the face: randomized controlled trial. *Lancet* 2004; **364**:1766–72.
- 9 van Loo E, Mosterd K, Krekels GAM *et al.* Surgical excision versus Mohs' micrographic surgery for basal cell carcinoma of the face: a randomised clinical trial with 10 year follow-up. *Eur J Cancer* 2014; **50**:3011–20.
- 10 Muller FM, Dawe FS, Moseley H, Fleming CJ. Randomized comparison of Mohs micrographic surgery and surgical excision for small nodular basal cell carcinoma: tissue-sparing outcome. *Dermatol Surg* 2009; **35**:1349–54.
- 11 Sprockel MD, Munte K, Plak P, van den Bos RR. How we do it: digital photomapping in Mohs micrographic surgery. *Dermatol Surg* 2016; **42**:1384–6.
- 12 Sobin L, Gospodarowicz M, Wittekind C. *TNM Classification of Malignant Tumours*, 7th edn. New York: Wiley-Blackwell, 2009.
- 13 Casparie M, Tiebosch AT, Burger G *et al.* Pathology databanking and biobanking in The Netherlands, a central role for PALGA, the nationwide histopathology and cytopathology data network and archive. *Cell Oncol* 2007; **29**:19–24.
- 14 Rowe DE, Carroll RJ, Day CL. Prognostic factors for local recurrence, metastasis and survival rates in squamous cell carcinoma of the skin, ear, and lip. *J Am Acad Dermatol* 1992; **26**:976–90.
- 15 Lansbury L, Bath-Hextall F, Perkins W *et al.* Interventions for non-metastatic squamous cell carcinoma of the skin: systematic review and pooled analysis of observational studies. *Br Med J* 2013; **347**:f6153.
- 16 Stewart TJ, Saunders A. Risk factors for positive margins after wide local excision of cutaneous squamous cell carcinoma. *J Dermatol Treat* 2018; in press.
- 17 Motley R, Kersey P, Lawrence C. Multiprofessional guidelines for the management of the patient with primary cutaneous squamous cell carcinoma. *Br J Dermatol* 2002; **146**:18–25.
- 18 National Comprehensive Cancer Network. Basal cell and squamous cell skin cancers. NCCN clinical practice guidelines in oncology (NCCN Guidelines) Version 2. Available at: http://www.nccn.org/professionals/physician_gls/f_guidelines.asp (last accessed 16 September 2018).