

University of Groningen

## Towards personalized medicine in pediatric inflammatory bowel disease

Haisma, Sjoukje

DOI:  
[10.33612/diss.96888808](https://doi.org/10.33612/diss.96888808)

**IMPORTANT NOTE: You are advised to consult the publisher's version (publisher's PDF) if you wish to cite from it. Please check the document version below.**

*Document Version*  
Publisher's PDF, also known as Version of record

*Publication date:*  
2019

[Link to publication in University of Groningen/UMCG research database](#)

*Citation for published version (APA):*  
Haisma, S. (2019). *Towards personalized medicine in pediatric inflammatory bowel disease*. [Thesis fully internal (DIV), University of Groningen]. Rijksuniversiteit Groningen. <https://doi.org/10.33612/diss.96888808>

### Copyright

Other than for strictly personal use, it is not permitted to download or to forward/distribute the text or part of it without the consent of the author(s) and/or copyright holder(s), unless the work is under an open content license (like Creative Commons).

The publication may also be distributed here under the terms of Article 25fa of the Dutch Copyright Act, indicated by the "Taverne" license. More information can be found on the University of Groningen website: <https://www.rug.nl/library/open-access/self-archiving-pure/taverne-amendment>.


### Take-down policy

If you believe that this document breaches copyright please contact us providing details, and we will remove access to the work immediately and investigate your claim.

Downloaded from the University of Groningen/UMCG research database (Pure): <http://www.rug.nl/research/portal>. For technical reasons the number of authors shown on this cover page is limited to 10 maximum.

# CHAPTER 3





# **TIME-TO-REACH TARGET CALPROTECTIN LEVEL AND RELATION WITH FIRST RELAPSE IN NEWLY DIAGNOSED PATIENTS WITH IBD: FIRST RESULTS OF THE FAST FORWARD CARE PROSPECTIVE REGISTRY**

**Sjoukje-Marije Haisma  
Henkjan J Verkade  
Rene Scheenstra  
Hubert PJ van der Doef  
Frank AJA Bodewes  
Patrick F van Rheenen**



## ABSTRACT

**Objectives:** Treatment targets in inflammatory bowel disease (IBD) move away from controlling symptoms towards complete recovery of the intestinal mucosa. Currently, the most frequently used noninvasive surrogate marker of mucosal healing is a faecal calprotectin concentration in the target range. This study tested if there was a relation between time-to-reach target calprotectin and first relapse.

**Methods:** We prospectively included all new-onset IBD patients aged 17 and younger in a cloud-based registry (FastForwardCare) and followed them for at least 52 weeks. They were treated according to Dutch national guidelines that advocate a step-up approach. Time-to-reach target was defined as the first calprotectin measurement below 250 µg/g after the start of induction therapy. Time-to-first relapse was defined as the time from the first calprotectin measurement below 250 µg/g until reintroduction of induction therapy. Time-to-first-flare was the time from the first calprotectin measurement below 250 µg/g until reappearance of symptoms with calprotectin values above 250 µg/g.

**Results:** We included 76 patients (luminal Crohn's disease (CD) 43; ulcerative colitis (UC) 33). Median age at diagnosis was respectively 14.5 and 14.1 years. Median time-to-reach target calprotectin was 37 weeks in CD and 11 weeks in UC patients (Log-rank test,  $p=0.001$ ). Once the calprotectin target was reached, time-to-first flare was significantly longer in CD than in UC patients (Log-rank test,  $p=0.001$ ). CD patients with time-to-reach target calprotectin  $\leq 12$  weeks after conventional induction therapy (i.e. exclusive enteral nutrition or steroids) had a more favourable disease course in the first year than those with time-to-reach target calprotectin  $>12$  weeks (Log-rank test,  $p=0.057$ ). In UC patients time-to-reach target calprotectin  $\leq 12$  weeks is not associated with a favourable disease course in the first year.

**Conclusion:** The findings of this prospective registry suggest that a quick response to conventional therapy predicts a favourable disease course in new-onset paediatric CD, but not in UC. The concept "time-to-reach target calprotectin level" rationalizes the indefinite term "response to treatment" and is well suited for studying CD treatment effectiveness in real-world practices.

## WHAT IS KNOWN

- Currently, the most frequently used surrogate for mucosal healing is a faecal calprotectin (FC) concentration in the target range.
- FC levels below 250 µg/g correlate well with mucosal healing.

## WHAT IS NEW

- A short time-to-reach the calprotectin target on conventional induction therapy, i.e. within 12 weeks, is predictive for favourable disease course in patients with new-onset Crohn's disease (CD), but not in patients with ulcerative colitis.
- Our findings suggest that CD patients who fail to reach target calprotectin levels within 12 weeks after exclusive enteral nutrition or steroid therapy may be entitled to step-up to anti-Tumor Necrosis Factor agents.

## INTRODUCTION

Inflammatory bowel diseases (IBD), including Crohn's disease (CD) and ulcerative colitis (UC), develop during childhood or adolescence in approximately 10% of patients.<sup>(1)</sup> Paediatric-onset IBD is associated with more extensive disease, higher disease activity, and a more complicated course than adult-onset IBD.<sup>(2,3)</sup> The focus of modern-day IBD management is moving away from controlling symptoms (or clinical remission) towards reaching and maintaining complete recovery of the intestinal mucosa, comprising both endoscopic and histologic healing (mucosal healing, MH).<sup>(4)</sup> MH is associated with better patient outcomes and is said to reduce the risk of end-organ damage.<sup>(5)</sup> MH is ideally evaluated by endoscopy with biopsies, but repeated endoscopic procedures are poorly tolerated. Currently, the most frequently used noninvasive surrogate marker of MH is faecal calprotectin (FC). FC levels below 250 µg/g correlate well with MH, FC levels rise quickly above this target threshold in case of disease flare and FC levels rapidly fall with successful treatment.<sup>(6)</sup>

In the past decade the approach to treating children with luminal CD and UC has been classically described as “step up”, while only few exceptional conditions at diagnosis warranted early and continuing use of anti-Tumor Necrosis Factor (TNF) agents, including patients with perianal fistulizing disease, growth failure, or extra-intestinal manifestations.<sup>(7)</sup> Although we acknowledge the importance of recognizing patients who are most at risk of developing a complicated disease course at diagnosis, we argue that risk stratification should not stop there. The identification of high and low risk patients for complicated disease should probably continue after diagnosis and extend into the first year of treatment.

For that purpose, we prospectively followed newly diagnosed children with luminal CD or UC who were initially treated with conventional induction therapy and evaluated whether there was a relation between time-to-reach target calprotectin and first relapse.

## METHODS

### Study design & setting

This was a noninterventional, observational study in which patient data were prospectively entered in an online registry, from diagnosis onwards. We used the cloud-based FastForwardCare (FFC) platform, which is especially designed to capture patients' records in an easy and comprehensive way (<https://www.fastforwardcare.nl/>). FFC is a health network in which care providers, researchers, patients and families learn together to improve the care for children with IBD. With effect from January 2015 the University Medical Center Groningen (UMCG) has started the collection of patient data. More IBD treatment centers will be invited to join this health network in the coming years. The FFC platform has options for writing medical summaries, creation of medical letters and building a research database without the drawback of double data entry. Care providers can trace back database information to their individual patients; other users only have access to anonymized data.

Health checks and data collection were done at structured time points, but not at fixed intervals. We used phenotype-specific clinical composite scores (Paediatric Ulcerative Colitis Activity Index (PUCAI) <sup>(8)</sup> and the shortened Paediatric Crohn's Disease Activity Index (shPCDAI).<sup>(9,10)</sup> Stool samples were sent to the department of laboratory sciences of the UMCG and were analysed with fCAL ELISA (BÜHLMANN Laboratories AG, Schönenbuch, Switzerland). The results of both the symptom score and the calprotectin stool test cumulated in a relapse risk stratification (Flarometer score) that has been described previously.<sup>(11,12)</sup> In brief, a patient who was in the low risk stratum (symptom score below 10 and calprotectin below 250 µg/g) was reassured and advised to retest in 3 months. A symptomatic patient with a calprotectin concentration above 250 µg/g was considered to have active disease and required immediate adjustment of therapy and retesting after 1 month. In the intermediate risk stratum a test interval of 1 month was advised before progressing to a treatment decision (figure 1).



Probability of disease flare	PUCAI or PCDAI >10	Calprotectin >250 µg/g	Message	Timing next test	No shift to lower stratum?
High (>80%)				1 month	Consider step-up
Intermediate				1 month	Consider other diagnostic tests
Low (<10%)				3 months	

Figure 1. Flarometer.

### Participants

We used the clinical data of patients up to the age of 17 who were newly diagnosed with luminal CD or UC between January 2015 and July 2017. National treatment guidelines provided uniformity in treatment among physicians.<sup>(13)</sup> Patients with active luminal CD were treated with steroids (to a maximum of 40 mg/day) and gradual dose tapering, or with exclusive enteral nutrition (EEN) for 6 weeks. Patients with active UC were treated with steroids and aminosalicylate dose escalation. Maintenance therapy was started at the same time as induction therapy and in CD this included standardized doses of mercaptopurine (1-1.5 mg/kg/day), azathioprine (2-2.5 mg/kg/day) or methotrexate (15 mg/m<sup>2</sup>/week), while in UC this included aminosalicylate monotherapy (60-80 mg/kg/day) or combination therapy with azathioprine. Anti-Tumor Necrosis Factor (TNF) therapy was indicated after failure of conventional therapy.

### Data collection

At diagnosis, patient demographics, disease characteristics, and detailed information on diagnostic work up (including baseline laboratory values, endoscopic examination, histological features, and small bowel imaging) were recorded online in the FFC registry. Stool specimen were collected at home and sent to the hospital laboratory prior to each face-to-face patient-doctor encounter, as previously described.<sup>(14)</sup> During health checks all of the following variables were entered in the FFC registry: current

treatment, clinical signs and symptoms, follow-up of laboratory values and faecal calprotectin, PUCAI or shPCDAI, a final conclusion (remission, clinical improvement, imminent relapse, relapse), and any treatment adjustments.

### **Definitions and outcome measures**

IBD was diagnosed according to the Revised Porto criteria<sup>(15)</sup> and disease phenotype, location and behavior were described according to the Paris classification.<sup>(16)</sup> Faecal calprotectin concentrations below 250 µg/g were considered as a proxy for mucosal healing.<sup>(17-20)</sup> Time-to-reach target was defined as the first calprotectin measurement below 250 µg/g after the start of induction therapy (Figure 2).

Time-to-first relapse, which was our primary outcome measure, was defined as the time from the first calprotectin measurement below 250 µg/g until reappearance of symptoms with calprotectin values above 250 µg/g (i.e. having a flarometer score in the high risk stratum). Growth delay was defined as height-for-age less than or equal to -2 SD.

### **Statistical analyses**

This was an exploratory study, with no formal hypothesis testing nor sample size calculation. Data analyses were performed using IBM SPSS version 23.0 for Apple Mac (IBM Corporation, Armonk, NY). Baseline demographics and disease characteristics were evaluated using descriptive statistics, including median and interquartile ranges (IQR: 25th percentile, 75th percentile) for continuous variables. For discrete variables, we calculated the 95% confidence interval in OpenEpi, Version 3. Time-to-event data were analyzed by Kaplan-Meier and log-rank tests. P values <0.05 were considered statistically significant. Graphs were constructed with GraphPad Prism version 7 for MacBook (GraphPad Software, San Diego, California USA). Patients with fistulizing CD were excluded from the survival analysis.

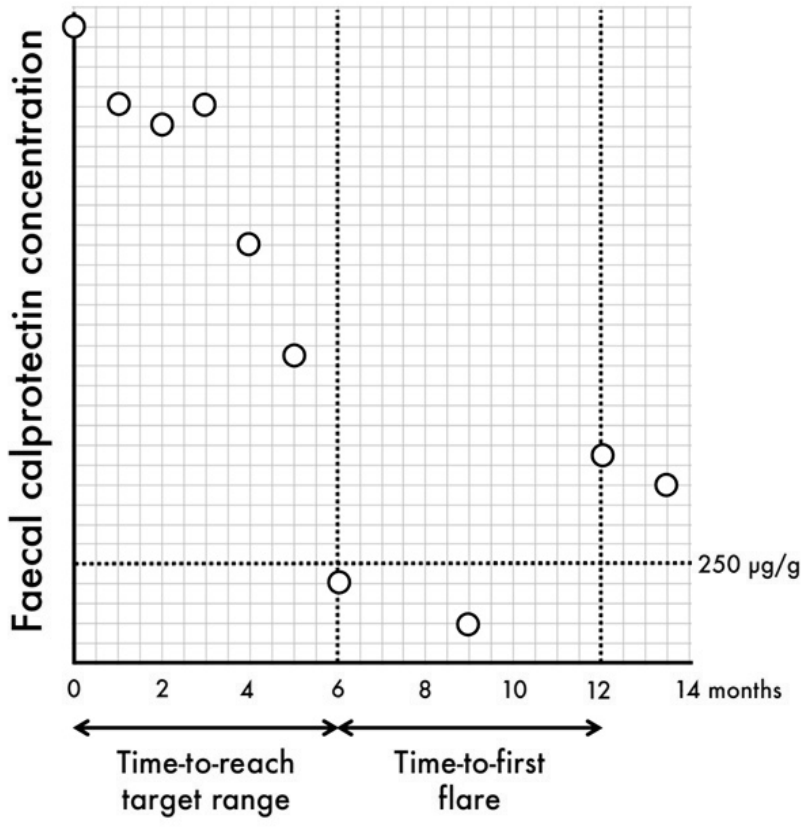


Figure 2. Faecal calprotectin of an imaginary patient with Crohn's disease plotted over time. Time-to-reach target is defined as the first calprotectin measurement below 250 µg/g after the start of induction therapy (in this case 6 months). Time-to-first flare is defined as the time from the first calprotectin measurement below 250 µg/g until reappearance of symptoms with calprotectin values above 250 µg/g (in this case 6 months)

## RESULTS

### Patient demographics

A total of 76 newly diagnosed children with IBD were identified between January 2015 to July 2017. Fifty-seven percent (43/76) had luminal CD and 43% (33/76) had UC. Table 1 shows the patient characteristics. Patients included in the FFC registry were diagnosed at a median age of 14.5 years (IQR 11.9-16.3) and 14.1 years (IQR 12-15.8), for CD and UC respectively. Fifty-three percent (23/43) of CD patients was female, compared to 49% (16/33) of UC patients. Growth delay at diagnosis was reported in 17% (7/41) of CD patients and in 6% (2/32) of UC patients. Median follow-up of patients was 67 weeks (IQR 54-86).

### Diagnostic work-up

#### *Abnormal laboratory tests at diagnosis*

Blood examination at diagnosis showed abnormal values of C-reactive protein (CRP) and/or erythrocyte sedimentation rate (ESR) in 67% (29/43) of CD patients and in 45% (15/33) of UC patients. Forty-eight percent (21/43) of CD patients and 42% (14/33) of UC patients presented with anaemia. All but one patient had

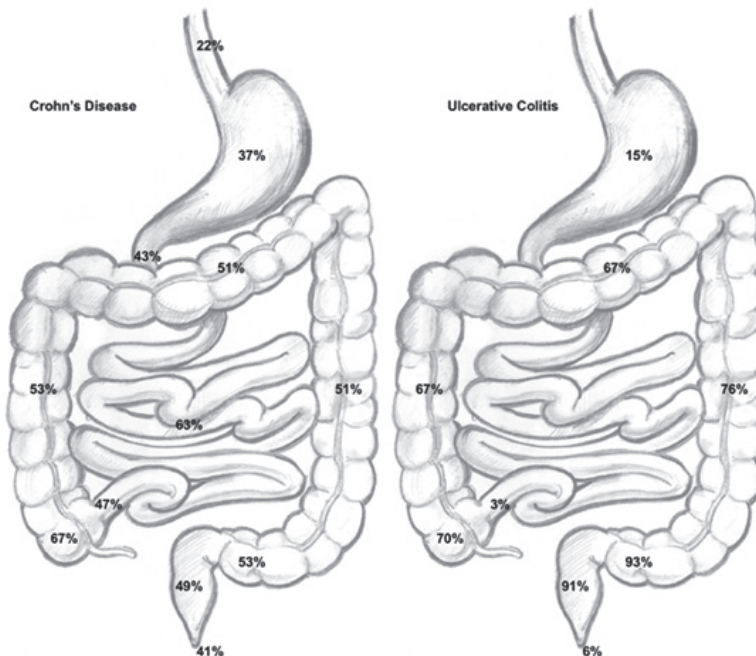


Figure 3. Inflamed segments at diagnostic endoscopy.

faecal calprotectin levels out of the normal range ( $> 250 \mu\text{g/g}$ ). One UC patient with continuous inflammation from rectum to sigmoid had a calprotectin level of  $220 \mu\text{g/g}$  at diagnosis. This patient was excluded from Kaplan-Meier analysis for having reached the event of interest at baseline.

### *Endoscopic and histological features at diagnosis*

Figure 3 gives a graphical representation of the distribution of endoscopically confirmed inflammation. Disease location and behavior are shown in table 1. Five patients, who were ultimately diagnosed with UC, had histologic features of focally enhanced gastritis. Small bowel imaging by magnetic resonance enterography (MRE) was performed in 10 patients with indefinite colonic inflammation to distinguish CD from UC. Abnormalities

Table 1. Patient characteristics at diagnosis

	CD (n=43)	UC (n=33)
<b>Demographic features</b>		
Median age in years (IQR)	14.5 (11.9-16.3)	14.1 (12-15.8)
Female gender	54%	49%
Family history of IBD,		
■ First degree relatives	6% (2-17)	10% (4-26)
■ Second degree relatives	18% (10-31)	15% (7-31)
IBD-related comorbidity		
■ Joint inflammation	20% (11-34)	14% (5-31)
■ Eye manifestations	4% (1-14)	-
■ Skin manifestations	4% (1-14)	-
<b>Growth delay*</b>		
	29% (18-44)	9% (3-24)
<b>Laboratory markers</b>		
■ CRP, $> 10 \text{ mg/L}$	51% (37-64)	31% (15-46)
■ ESR, $> 20 \text{ mm/h}$	72% (56-84)	43% (27-61)
■ Hb, $< -2 \text{ SD}$ (sex and age adjusted**)	10% (4-22)	14% (5-31)
■ Stool Calprotectin, $> 250 \mu\text{g/g}$	100% (93-100)	97% (85-99)

Table continues on next page

CD (n=43)

UC (n=33)

### Disease location (according to Paris Classification)

■ L1: Distal 1/3 ileum		19% (10-33)
■ L2: Colonic		42% (28-57)
■ L3: Ileocolonic		44% (30-59)
■ L4a: Upper disease proximal to ligament of Treitz*		5% (1-15)
■ L4b: Upper disease distal to ligament of Treitz and proximal to distal 1/3 ileum*		23% (13-38)
■ L4ab: Upper disease above and below the ligament of Treitz		37% (24-52)
■ E1: Ulcerative proctitis	24% (13-41)	
■ E2: Left-sided UC (distal to splenic flexure)	9% (3-24)	
■ E3: Extensive (distal to hepatic flexure)	-	
■ E4: Pancolitis (proximal to hepatic flexure)	67% (50-80)	

### Disease behavior\*\*\*

■ B1: Nonstricturing, nonpenetrating		84% (70-92)
■ B2: Stricturing		7% (2-19)
■ B3: Penetrating		5% (1-15)
■ B2B3: Both penetrating and stricturing disease		5% (1-15)
■ p: Perianal disease		35% (22-50)

Values are percentages (95% confidence interval) unless otherwise stated.

\* Growth delay was defined as weight versus height  $\leq -2$  standard deviations (SD) and/or height versus age  $\leq -2$  SD.

\*\* We used age- and sex-adjusted cut points for low haemoglobin blood levels (Hb). Cut-offs were 7.1 g/L for boys and girls younger than 13 years, 8.1 g/L for boys 13 to 17 years, and 7.4 g/L for girls between 13 and 17 years.<sup>(29)</sup>

suggestive for CD were seen in 6 patients, while the remaining 4 patients with normal MRE findings were initially diagnosed as IBD-unclassified. Follow-up colonoscopies confirmed a diagnosis of CD in three patients and UC in one patient.

### **Initial induction and maintenance therapy**

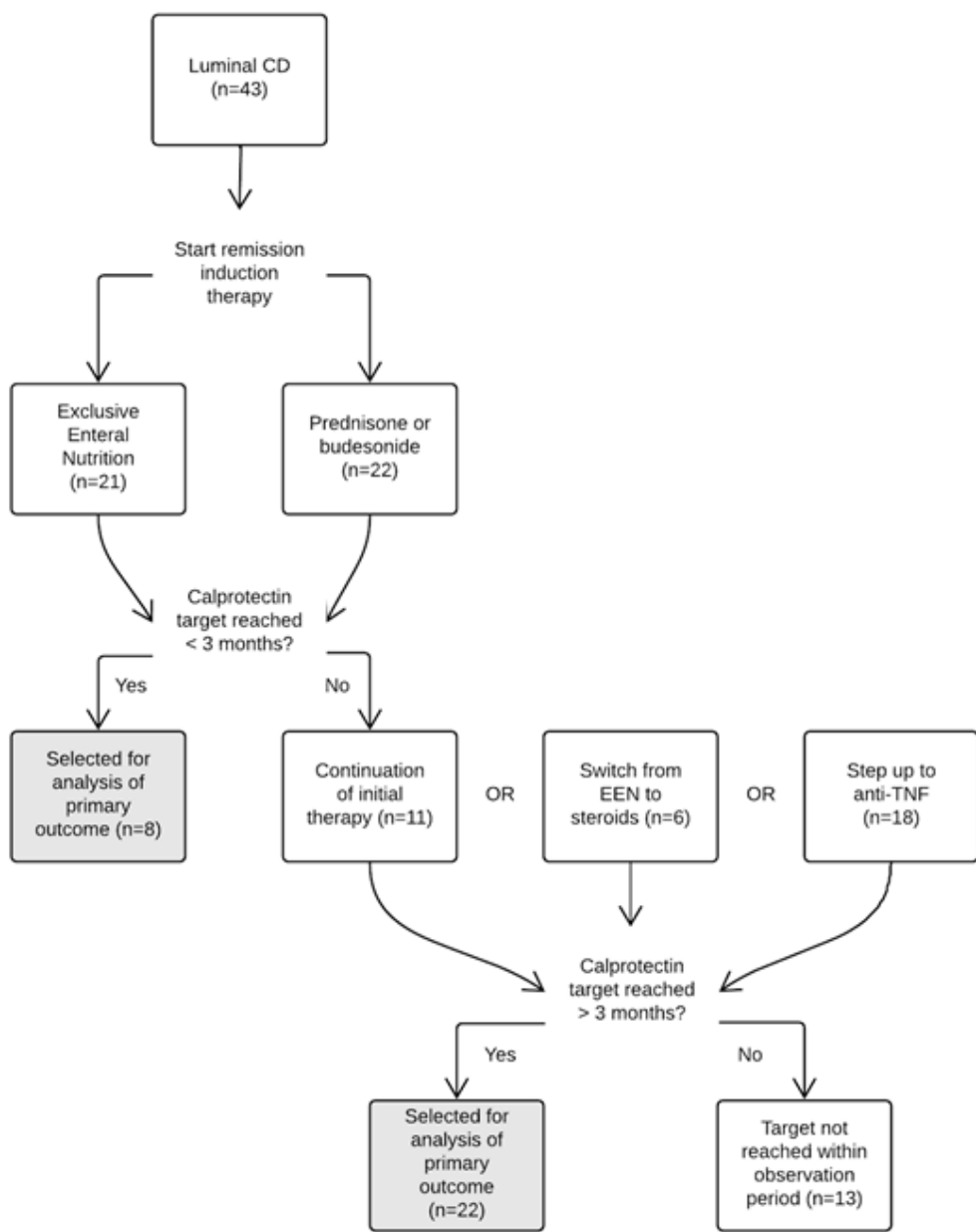
Figure 4 shows the flow of patients through the first year postdiagnosis. Forty-nine percent (21/43) of patients diagnosed with luminal CD were initially treated with EEN to induce remission and 51% (22/43) with steroids. Seventy percent (30/43) of CD patients reached the treatment target during the observation period (whether or not after switch or step-up) and were included in the analysis of the primary outcome measure (time-to-first relapse).

Eighty-four percent (27/32) of UC patients were induced with oral steroids in combination with aminosalicylates, while 13% (4/32) of patients, in particular those with ulcerative proctitis, were induced with topical aminosalicylates. One patient with UC was initially misdiagnosed as luminal CD and put on EEN. The final diagnosis was adjusted after colonoscopy was repeated. Ultimately 94% (30/32) of UC patients reached the treatment target during the observation period (whether or not after switch or step-up) and were included in the analysis of the primary outcome measure. First choice immunomodulator for CD patients was azathioprine in ninety-three percent (40/43) of cases. Eighty-four percent (27/32) of the UC patients were on oral aminosalicylate maintenance therapy, in 85% (23/27) of cases in combination with azathioprine.

### **Disease course in the first year postdiagnosis**

#### *Time-to-reach target calprotectin levels (< 250 µg/g)*

Figure 5 shows the time-to-reach target calprotectin levels (< 250 µg/g) in the study population in the first year postdiagnosis. Nineteen percent (8/43) of patients with luminal CD reached the target within 12 weeks after diagnosis. Another 42% (18/43) reached the target between 12 and 52 weeks postdiagnosis, for which 14 patients required a step-up to anti-TNFs. Forty percent (17/43) had not reached the treatment target after 52 weeks of follow-up. Another 4 patients with CD patients reached the calprotectin target concentration after 52 weeks of follow-up. Among patients with UC, 53% (17/32) reached the target within 12 weeks after diagnosis. Another 31% (10/32) reached the target between 12 and 52 weeks postdiagnosis, for which one patient





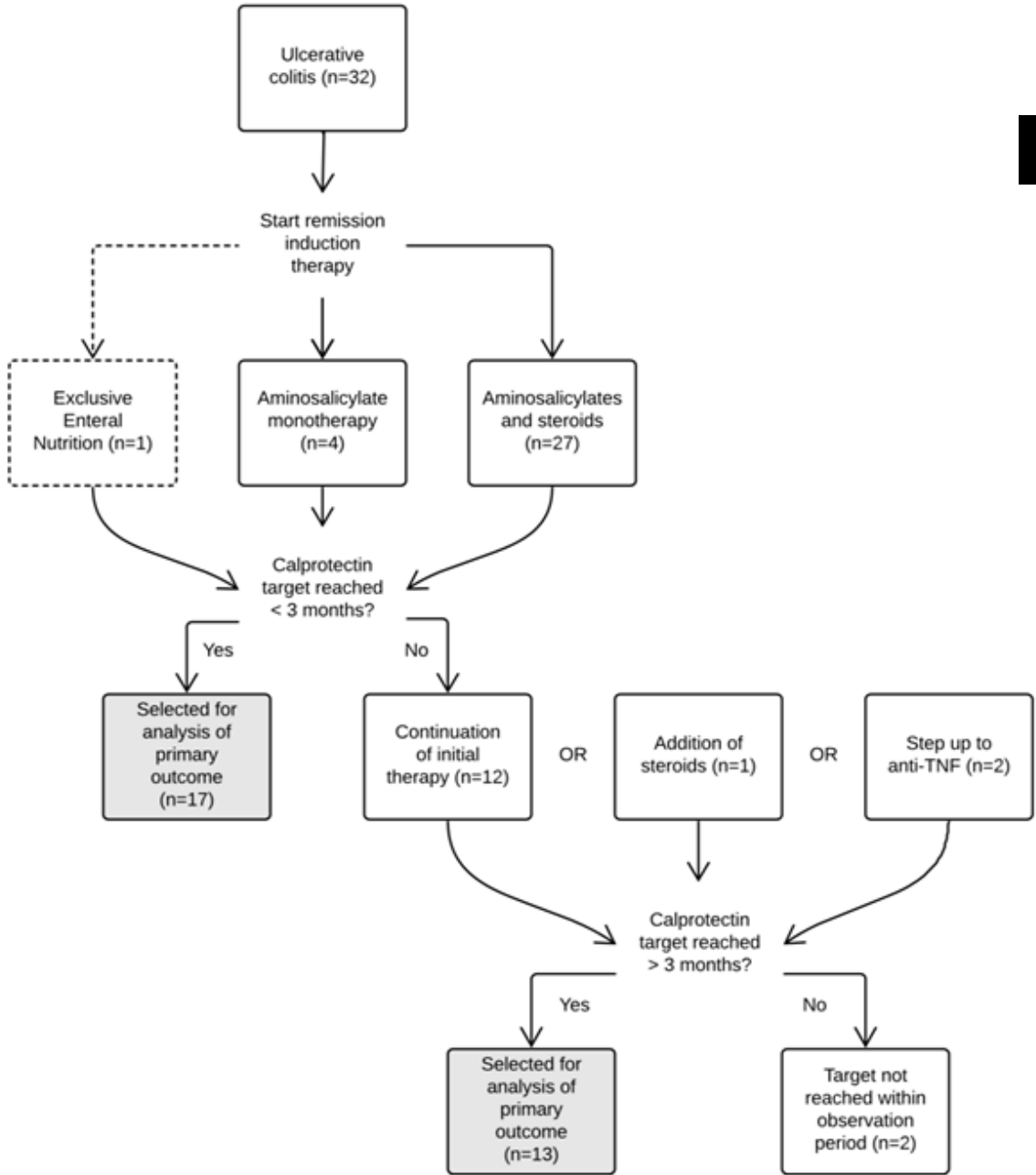


Figure 4. Flow of patients with (A) Crohn's disease and (B) ulcerative colitis in the first year postdiagnosis indicating how many reached the treatment target within 12 weeks, and how many at a later stage.

needed a step-up to anti-TNFs. Thirteen percent (5/32) had not reached the treatment target at the end of 52 weeks follow-up. Another 3 UC patients reached the calprotectin target concentration after 52 weeks of follow-up.

A significant larger proportion of patients with UC reached the calprotectin target in the first year compared to patients with CD, and also at a faster pace. The median time-to-reach target calprotectin levels was respectively 11 weeks and 37 weeks (Log-rank test,  $p=0.001$ ). The slopes for UC and CD patients in figure 4 indicate that the difference in time-to-reach target calprotectin is in the first 12 weeks postdiagnosis. Thereafter both curves follow a parallel track. The patients that ultimately reached the calprotectin target served as the study population to evaluate time-to-first relapse.

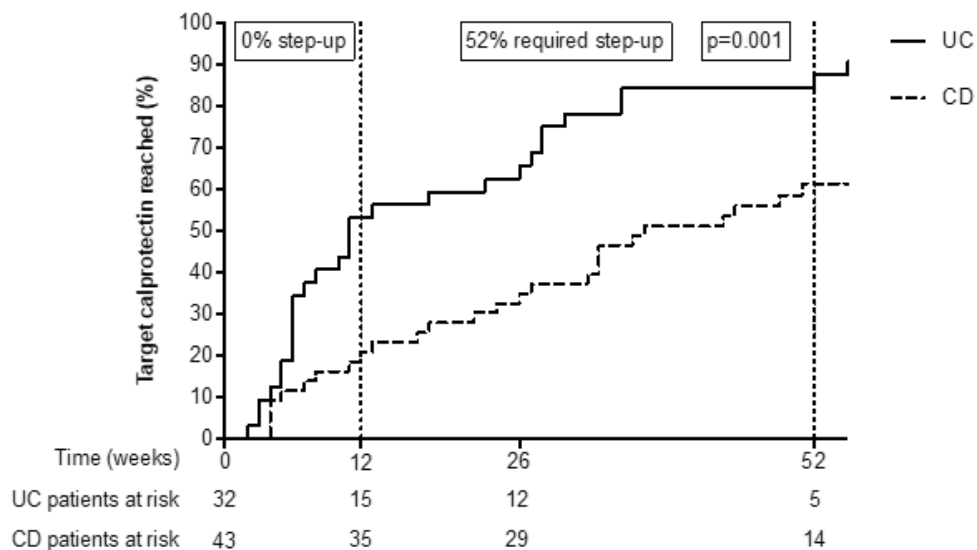


Figure 5. Kaplan-Meier plot demonstrating time-to-reach target calprotectin (< 250 µg/g) in the first year postdiagnosis. Patients with ulcerative colitis (solid line) and Crohn's disease (dotted line) were treated according to the Dutch step-up approach.

**Time-to-first relapse after reaching the calprotectin target**

Figure 6 shows the time-to-first relapse after reaching the calprotectin target. Patients with CD who had reached the treatment target remained in remission for a significantly longer time than patients with UC (Log-rank test,  $p=0.001$ ). Figure 7 shows that new-onset CD patients who reached the target calprotectin level within 12 weeks were more likely to have a favourable disease course, than CD patients who reached the target calprotectin after 12 weeks (Log-rank test,  $p=0.057$ ). In UC patients there was no association between the pace of reaching the target calprotectin and favourable disease course (Log-rank test,  $p=0.547$ ).

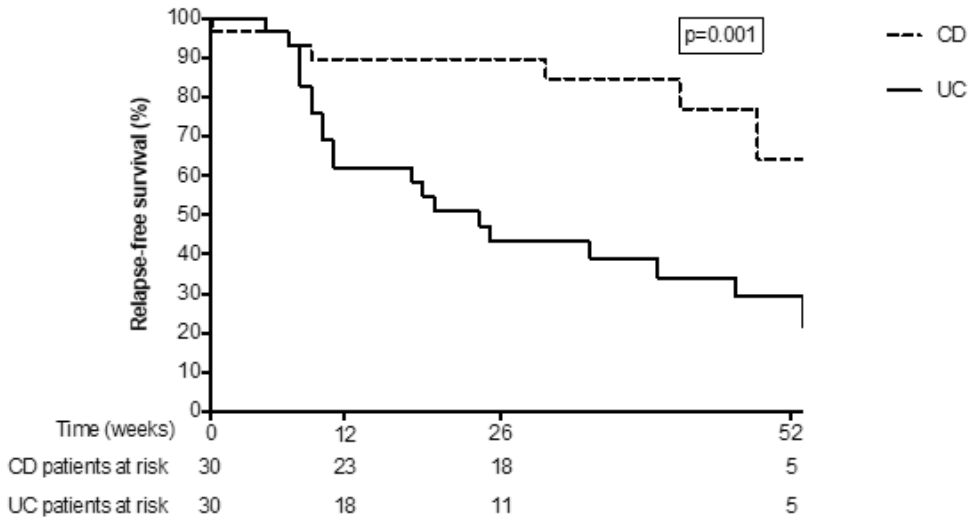


Figure 6. Kaplan-Meier plot demonstrating time-to-first relapse, defined as the time from the first calprotectin measurement below 250 µg/g until reintroduction of induction therapy (whether or not step-up). Patients with ulcerative colitis (solid line) are compared with patients with Crohn's disease (dotted line).

In both CD and UC patients, one year outcomes including time-to-reach target calprotectin and time-to-first flare were similar regardless of initial choice of induction therapy, although our study was not powered to address this question (Supplementary table 1).

Supplementary figure 1 gives an overview of changes in faecal calprotectin from baseline to the moment of reaching the target range ( $\Delta FC\downarrow$ ) and from the last result in range to the first out-of-range result ( $\Delta FC\uparrow$ ). The median  $\Delta FC\downarrow$  was -2095 (interquartile range, IQR -3000- -1281)  $\mu\text{g/g}$ . The median  $\Delta FC\uparrow$  was 860 (interquartile range, IQR 557-1922)  $\mu\text{g/g}$ . Ninety-five percent (72/76) of IBD patients in our cohort had FC concentrations over 500  $\mu\text{g/g}$  at baseline. Eighty-eight percent (53/60) of patients had FC concentrations below 200  $\mu\text{g/g}$  when the target range was reached. Similarly, in those who flared during the observation period, FC concentrations were below 200  $\mu\text{g/g}$  shortly before the flare in 92% (23/25) of cases. The first out-of-range measurement was over 500  $\mu\text{g/g}$  in 96% (24/25) of cases.

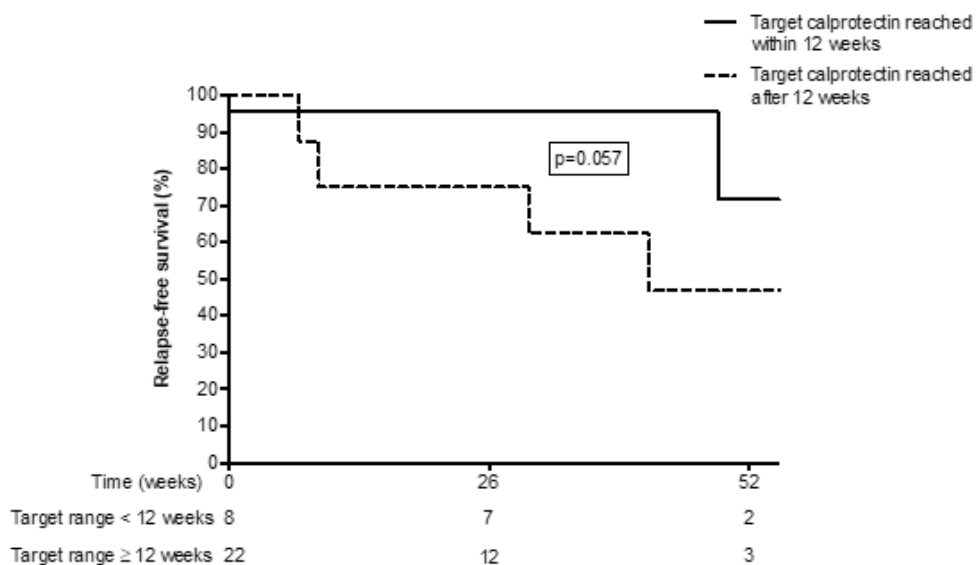


Figure 5. Kaplan-Meier plot demonstrating time-to-first relapse, defined as the time from the first calprotectin measurement below 250  $\mu\text{g/g}$  until reintroduction of induction therapy (whether or not step-up) in 30 patients with Crohn's disease. Patients who reached the target calprotectin within 12 weeks (solid line) are compared with patients who reached the target calprotectin beyond 12 weeks (dotted line).

# DISCUSSION

## Key findings

We quantified time-to-reach target calprotectin levels and its relation with first flare in patients with new-onset paediatric IBD. The data were drawn from the FastForwardCare Registry. We showed that patients with UC reached the treatment target (FC <250 µg/g) at a faster pace than patients with CD, but they also experienced a first flare sooner than patients with CD. Additionally, we observed that CD patients with time-to-reach target calprotectin ≤12 weeks after conventional induction therapy (i.e. exclusive enteral nutrition or steroids) had a more favourable disease course in the first year than those with time-to-reach target calprotectin >12 weeks. In UC patients time-to-reach target calprotectin ≤12 weeks was not associated with a favorable disease course in the first year.

## Comparison with existing literature

Several research groups have identified factors at disease diagnosis that warranted early and ongoing use of anti-TNF agents, including perianal fistulizing disease, presence of strictures or penetrating disease in CD, and extensive disease (pancolitis) or extra-intestinal manifestations in UC.<sup>(21-26)</sup> In addition, we have now shown that the absence of response to conventional induction therapy (with EEN or steroids), rationalized in a failure to reach target calprotectin levels within 12 weeks from initiation, facilitates selection of patients with CD that may require an accelerated step-up therapy. A recently published Pan-European study among patients with new-onset paediatric CD also stressed the prognostic power of calprotectin values at week 12 of induction therapy, and showed that response to induction therapy has more impact than baseline disease severity or inflammation.<sup>(27)</sup>

## Faecal calprotectin cut-point

The discussion about the best calprotectin cut-point for mucosal healing is on-going, and the debate is blurred by the intended purpose of this stool test. In many papers the use of a single calprotectin measurement is compared with a reference test (such as endoscopy or MRE),<sup>(28)</sup> while we use calprotectin at every health check (i.e. periodically) and now adjust our therapy plans based on the trend in calprotectin results. By analogy with the most frequently used monitoring test in medicine -the

measurement of blood pressure- the variability over time makes a single measurement a poor monitoring test. Fecal calprotectin becomes a good monitoring test when therapy adjustment is based on a series of measurements.

Choosing a cut-point that is considerably lower than 250  $\mu\text{g/g}$  used in this project (e.g. 150  $\mu\text{g/g}$ ) will definitely improve the specificity of the calprotectin test. At the same time this may be detrimental to the outcome of patients with calprotectin results between 150 and 250  $\mu\text{g/g}$ , who may need to undergo pointless changes of therapy that lead to quick exhaustion of the therapeutic arsenal. Evaluation of the best calprotectin cut-point should therefore not be limited to the reporting of Receiver Operating Characteristic (ROC) curves, as is done in many publications,<sup>(28)</sup> but must also include the monitoring strategy, definitions of action thresholds and the actions to be taken if any of the thresholds is reached.

### **Limitations**

Although there is an imminent danger of over-interpretation of results in an observational study, our results offer insight into the short-term outcomes of new-onset paediatric IBD patients, where double-blind randomised controlled trials are unlikely to occur. The University Medical Center in Groningen was the first center to start capturing data in the FastForwardCare prospective registry. We realize that single center studies are unlikely to have sufficient power to draw reliable conclusions, especially when evaluating the effect of treatment choices on time-to-event analyses, and we therefore aim to encourage more paediatric IBD treatment centers to join the registry in the upcoming years.

### **Implications for paediatric practice and further research**

Several trials have shown that early use of anti-TNF agents is associated with improved outcomes and fewer complications in adult as well as in paediatric patients with CD.<sup>(25,29-34)</sup> This does not necessarily mean that every new-onset IBD patient will profit from the early institution of anti-TNF induction treatment. A significant proportion of patients with IBD have a relatively favorable disease course, with long time-to-first relapse and low risk of complications. We are the first to have shown that a time-to-reach target calprotectin level within 12 weeks is predictive for a favourable disease course in the short run in patients with new-onset CD, but not in patients with UC.

Given that calprotectin is a cytosolic protein particularly abundant

in neutrophils, these results are not unexpected. Influx of neutrophils in the epithelium or in the intestinal lumen are known to increase the amount of calprotectin in the gut lumen.<sup>(35)</sup> In UC the inflammation is confined to the mucosal layer, while in CD also the deeper layers may be affected. We postulate that time-to-elimination of neutrophils (in other words time-to-histologic healing) takes longer in CD, and this may be reflected in the longer time-to-reach target calprotectin levels. CD patients with a swift normalization of calprotectin values by induction therapy may have had a less deep type of inflammation, but we were unable to prove this in the current study, due to absence of follow-up biopsies.

## CONCLUSION

With the use of a prospective registry we have shown that reaching calprotectin levels  $<250 \mu\text{g/g}$  within 12 weeks of the initiation of induction therapy, facilitates recognition of new-onset CD patients with a favourable disease course, but this does not apply to new-onset UC patients. CD patients who fail to reach target calprotectin levels within 12 weeks after conventional induction therapy may be entitled to step-up to anti-TNF agents.

## REFERENCES

1. Ghione S, Sarter H, Fumery M, et al. Dramatic Increase in Incidence of Ulcerative Colitis and Crohn's Disease (1988-2011): A Population-Based Study of French Adolescents. *Am J Gastroenterol* 2018 February 01;113(2):265-272.
2. Vernier-Massouille G, Balde M, Salleron J, et al. Natural history of pediatric Crohn's disease: a population-based cohort study. *Gastroenterology* 2008 October 01;135(4):1106-1113.
3. Pigneur B, Seksik P, Viola S, et al. Natural history of Crohn's disease: comparison between childhood- and adult-onset disease. *Inflamm Bowel Dis* 2010 June 01;16(6):953-961.
4. Peyrin-Biroulet L, Bressenot A, Kampman W. Histologic remission: the ultimate therapeutic goal in ulcerative colitis? *Clin Gastroenterol Hepatol* 2014 June 01;12(6):34.e2.
5. Peyrin-Biroulet L, Sandborn W, Sands BE, et al. Selecting Therapeutic Targets in Inflammatory Bowel Disease (STRIDE): Determining Therapeutic Goals for Treat-to-Target. *Am J Gastroenterol* 2015 September 01;110(9):1324-1338.
6. Zittan E, Kelly OB, Kirsch R, et al. Low Fecal Calprotectin Correlates with Histological Remission and Mucosal Healing in Ulcerative Colitis and Colonic Crohn's Disease. *Inflamm Bowel Dis* 2016 March 01;22(3):623-630.
7. Ruemmele FM, Veres G, Kolho KL, et al. Consensus guidelines of ECCO/ESPGHAN on the medical management of pediatric Crohn's disease. *J Crohns Colitis* 2014 October 01;8(10):1179-1207.
8. Turner D, Otley AR, Mack D, et al. Development, validation, and evaluation of a pediatric ulcerative colitis activity index: a prospective multicenter study. *Gastroenterology* 2007 August 01;133(2):423-432.
9. Hyams JS, Ferry GD, Mandel FS, et al. Development and validation of a pediatric Crohn's disease activity index. *J Pediatr Gastroenterol Nutr* 1991 May 01;12(4):439-447.
10. Kappelman MD, Crandall WV, Colletti RB, et al. Short pediatric Crohn's disease activity index for quality improvement and observational research. *Inflamm Bowel Dis* 2011 January 01;17(1):112-117.
11. Heida A, Dijkstra A, Muller Kobold A, et al. Efficacy of Home Telemonitoring versus Conventional Follow-up: A Randomized Controlled Trial among Teenagers with Inflammatory Bowel Disease. *J Crohns Colitis* 2018 March 28;12(4):432-441.
12. Dijkstra A, Heida A, van Rheenen PF. Exploring the Challenges of Implementing a Web-Based Telemonitoring Strategy for

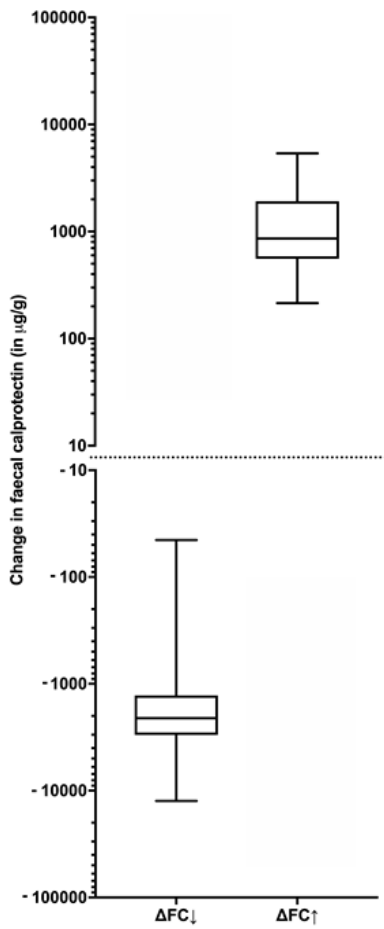


- Teenagers With Inflammatory Bowel Disease: Empirical Case Study. *J Med Internet Res* 2019 March 29;21(3):e11761.
13. Maaser C, Sturm A, Vavricka SR, et al. ECCO-ESGAR Guideline for Diagnostic Assessment in IBD Part 1: Initial diagnosis, monitoring of known IBD, detection of complications. *J Crohns Colitis* 2019 February 1;13(2):144-164.
  14. Haisma SM, van Rheenen PF, Wagenmakers L, et al. Calprotectin instability may lead to undertreatment in children with IBD. *Arch Dis Child* 2019 January 17 Epub ahead of print.
  15. Levine YY, Koletzko J, Turner D. ESPGHAN revised Porto criteria for the diagnosis of inflammatory bowel disease in children and adolescents. *Zhonghua Er Ke Za Zhi* 2016 October 02;54(10):728-732.
  16. Levine A, Griffiths A, Markowitz J, et al. Pediatric modification of the Montreal classification for inflammatory bowel disease: the Paris classification. *Inflamm Bowel Dis* 2011 June 01;17(6):1314-1321.
  17. Colombel JF, Panaccione R, Bossuyt P, et al. Effect of tight control management on Crohn's disease (CALM): a multicentre, randomised, controlled phase 3 trial. *Lancet* 2018 December 23;390(10114):2779-2789.
  18. Kristensen V, Roseth A, Ahmad T, et al. Fecal Calprotectin: A Reliable Predictor of Mucosal Healing after Treatment for Active Ulcerative Colitis. *Gastroenterol Res Pract* 2017;2017:2098293.
  19. Jauregui-Amezaga A, Lopez-Ceron M, Aceituno M, et al. Accuracy of advanced endoscopy and fecal calprotectin for prediction of relapse in ulcerative colitis: a prospective study. *Inflamm Bowel Dis* 2014 July 01;20(7):1187-1193.
  20. Zhulina Y, Cao Y, Amcoff K, et al. The prognostic significance of faecal calprotectin in patients with inactive inflammatory bowel disease. *Aliment Pharmacol Ther* 2016 September 01;44(5):495-504.
  21. Guizzetti L, Zou G, Khanna R, et al. Development of Clinical Prediction Models for Surgery and Complications in Crohn's Disease. *J Crohns Colitis* 2018 January 24;12(2):167-177.
  22. Beaugerie L, Seksik P, Nion-Larmurier I, et al. Predictors of Crohn's disease. *Gastroenterology* 2006 March 01;130(3):650-656.
  23. Khanna R, Jairath V, Feagan BG. The Evolution of Treatment Paradigms in Crohn's Disease: Beyond Better Drugs. *Gastroenterol Clin North Am* 2017 September 01;46(3):661-677.
  24. Van Assche G, Dignass A, Panes J, et al. The second European

- evidence-based Consensus on the diagnosis and management of Crohn's disease: Definitions and diagnosis. *J Crohns Colitis* 2010 February 01;4(1):7-27.
25. Kugathasan S, Denson LA, Walters TD, et al. Prediction of complicated disease course for children newly diagnosed with Crohn's disease: a multicentre inception cohort study. *Lancet* 2017 April 29;389(10080):1710-1718.
  26. Yarur AJ, Strobel SG, Deshpande AR, et al. Predictors of aggressive inflammatory bowel disease. *Gastroenterol Hepatol (N Y)* 2011 October 01;7(10):652-659.
  27. Ziv-Baran T, Hussey S, Sladek M, et al. Response to treatment is more important than disease severity at diagnosis for prediction of early relapse in new-onset paediatric Crohn's disease. *Aliment Pharmacol Ther* 2018 December 01;48(11-12):1242-1250.
  28. Mosli MH, Zou G, Garg SK, et al. C-Reactive Protein, Fecal Calprotectin, and Stool Lactoferrin for Detection of Endoscopic Activity in Symptomatic Inflammatory Bowel Disease Patients: A Systematic Review and Meta-Analysis. *Am J Gastroenterol* 2015 June 01;110(6):19; quiz 820.
  29. D'Haens G, Baert F, van Assche G, et al. Early combined immunosuppression or conventional management in patients with newly diagnosed Crohn's disease: an open randomised trial. *Lancet* 2008 February 23;371(9613):660-667.
  30. Walters TD, Kim MO, Denson LA, et al. Increased effectiveness of early therapy with anti-tumor necrosis factor-alpha vs an immunomodulator in children with Crohn's disease. *Gastroenterology* 2014 February 01;146(2):383-391.
  31. Khanna R, Bressler B, Levesque BG, et al. Early combined immunosuppression for the management of Crohn's disease (REACT): a cluster randomised controlled trial. *Lancet* 2015 November 07;386(10006):1825-1834.
  32. Schreiber S, Reinisch W, Colombel JF, et al. Subgroup analysis of the placebo-controlled CHARM trial: increased remission rates through 3 years for adalimumab-treated patients with early Crohn's disease. *J Crohns Colitis* 2013 April 01;7(3):213-221.
  33. Colombel JF, Sandborn WJ, Reinisch W, et al. Infliximab, azathioprine, or combination therapy for Crohn's disease. *N Engl J Med* 2010 April 15;362(15):1383-1395.
  34. Jongsma MME, Cozijnsen MA, van Pieterse M, et al. Top-down infliximab superior to step-up in children with moderate-to-severe Crohn's disease - a multicenter randomized controlled trial. *Journal of Pediatric Gastroenterology and Nutrition* 2019;

68, Supplement 1: 40-41.

35. Magro F, Lopes J, Borralho P, et al. Comparison of different histological indexes in the assessment of UC activity and their accuracy regarding endoscopic outcomes and faecal calprotectin levels. *Gut* 2018 April;68(4):594-603.
36. Nathan DG, Orkin SH, Lock AT, et al. *Nathan and Oski's Hematology of Infancy and Childhood*. Philadelphia: Saunders; 2003.



Supplementary figure 1. Overview of changes in faecal calprotectin from baseline to the moment of reaching the target range ( $\Delta FC_{\downarrow}$ ) and from the last result in range to the first out-of-range result ( $\Delta FC_{\uparrow}$ )

### Crohn's Disease

Induction + maintenance therapy	n	Median time-to-reach target (range)	n	Median time-to-flare (range)
EEN + thiopurine	6	7.5 weeks (4 – 24)	3	7 weeks (1 – 42)
Steroids + thiopurine	10	14.5 weeks (4 – 58)	2	41.5 weeks (34 – 49)
Anti-TNF + thiopurine	14	36.5 weeks (22 – 86)	1	11 weeks

### Ulcerative Colitis

Induction + maintenance therapy	n	Median time-to-reach target (range)	n	Median time-to-flare (range)
Steroids + 5-ASA	19	11 weeks (3 – 56)	15	22 weeks (5 – 55)
Steroids + thiopurine + 5-ASA	7	11 weeks (2 – 35)	3	40 weeks (20 – 73)
5-ASA	3	5 weeks (3 – 63)	1	43 weeks
Anti-TNF + thiopurine	1	27 weeks		