

University of Groningen

Notes on the margin of stability

Curtze, Carolin; Buurke, Tom J W; McCrum, Christopher

Published in:
Journal of biomechanics

DOI:
[10.1016/j.jbiomech.2024.112045](https://doi.org/10.1016/j.jbiomech.2024.112045)

IMPORTANT NOTE: You are advised to consult the publisher's version (publisher's PDF) if you wish to cite from it. Please check the document version below.

Document Version
Publisher's PDF, also known as Version of record

Publication date:
2024

[Link to publication in University of Groningen/UMCG research database](#)

Citation for published version (APA):
Curtze, C., Buurke, T. J. W., & McCrum, C. (2024). Notes on the margin of stability. *Journal of biomechanics*, 166, Article 112045. <https://doi.org/10.1016/j.jbiomech.2024.112045>

Copyright

Other than for strictly personal use, it is not permitted to download or to forward/distribute the text or part of it without the consent of the author(s) and/or copyright holder(s), unless the work is under an open content license (like Creative Commons).

The publication may also be distributed here under the terms of Article 25fa of the Dutch Copyright Act, indicated by the "Taverne" license. More information can be found on the University of Groningen website: <https://www.rug.nl/library/open-access/self-archiving-pure/taverne-amendment>.

Take-down policy

If you believe that this document breaches copyright please contact us providing details, and we will remove access to the work immediately and investigate your claim.

Downloaded from the University of Groningen/UMCG research database (Pure): <http://www.rug.nl/research/portal>. For technical reasons the number of authors shown on this cover page is limited to 10 maximum.



Notes on the margin of stability

Carolyn Curtze^{a,1}, Tom J.W. Buurke^{b,c,1}, Christopher McCrum^{d,e,*},¹

^a University of Nebraska at Omaha, Department of Biomechanics, Omaha, NE, USA

^b University of Groningen, University Medical Center Groningen, Department of Human Movement Sciences, Groningen, the Netherlands

^c Department of Movement Sciences, KU Leuven, Leuven, Belgium

^d Department of Nutrition and Movement Sciences, NUTRIM School of Nutrition and Translational Research in Metabolism, Maastricht University Medical Centre+, Maastricht, the Netherlands

^e Department of Rehabilitation Sciences, Neurorehabilitation Research Group, KU Leuven, Leuven, Belgium

ARTICLE INFO

Keywords:

Extrapolated center of mass
Gait stability
Dynamic balance
Biomechanics
Locomotion

ABSTRACT

The concept of the 'extrapolated center of mass (XcoM)', introduced by Hof et al., (2005, *J. Biomechanics* 38 (1), p. 1–8), extends the classical inverted pendulum model to dynamic situations. The vector quantity XcoM combines the center of mass position plus its velocity divided by the pendulum eigenfrequency. In this concept, the margin of stability (MoS), i.e., the minimum signed distance from the XcoM to the boundaries of the base of support was proposed as a measure of dynamic stability. Here we describe the conceptual evolution of the XcoM, discuss key considerations in the estimation of the XcoM and MoS, and provide a critical perspective on the interpretation of the MoS as a measure of instantaneous mechanical stability.

1. Introduction

The control of stability can be described to a certain extent by a simple mechanical system, the so-called 'inverted pendulum' model. In line with this model, the vertical projection of the center of mass (CoM) needs to stay within the boundaries of the base of support (BoS) to maintain stability in static situations. Yet, this condition does not hold during dynamic situations. To define stability in dynamic situations such as walking, one must account for the velocity of the CoM. The 'extrapolated center of mass' (XcoM) is equivalent to the position of the CoM plus its velocity divided by the pendulum eigenfrequency, a constant specific to stature. The signed distance 'b' between the BoS and XcoM, was termed the 'margin of stability' (MoS). Hof et al. (2005) proposed the minimum distance from the XcoM to the boundaries of the BoS, b_{min} , as a measure of stability during dynamic situations. Owing to its simplicity and wide applicability, the XcoM and MoS have enjoyed tremendous popularity since they were first introduced by At L. Hof in 2005, though there is wide variation in estimation and interpretation of the MoS in the literature (Watson et al., 2021). In this perspective article, we detail the evolution of the concept and the estimation and interpretation of the XcoM and MoS.

2. Conceptual evolution of the extrapolated center of mass

Stability control during quiet standing can be described by the motion of an inverted pendulum (Fig. 1, Winter (1995)). The human body is modeled as a stick placed on the ground at the center of pressure (CoP) with a whole-body CoM high above the ground. The ground reaction force originating at the CoP, is acting on the CoM. The inverted pendulum falls to the left when the CoP is to the right of the CoM and vice versa. To prevent the inverted pendulum from falling over, the position of the CoP can be controlled by muscle action. Thus, in the *classic inverted pendulum model*, the CoM (x) needs to stay within the boundaries of the BoS ($u_{min} < x < u_{max}$) to maintain stability.

Pai and colleagues (Iqbal and Pai, 2000; Pai et al., 2000; Pai and Patton, 1997) showed that this condition (CoM within BoS) is not applicable to dynamic situations. The velocity of the CoM needs to be accounted for to predict if stability can be regained. That is, even when the CoM lies within the BoS but the CoM velocity is pointing away, stability may not be achieved if the CoM velocity is sufficiently large. Likewise, if the CoM is outside of the BoS, stability can be regained if the CoM velocity is pointing towards the BoS. Based on extensive simulations (accounting for environmental, anatomical, and physiological constraints), Pai and Patton (1997) predicted the CoM velocity-position limits for terminating movement and stability recovery. This aligned

* Corresponding author at: Department of Nutrition and Movement Sciences, NUTRIM School for Nutrition and Translational Research in Metabolism, Maastricht University, the Netherlands.

E-mail address: chris.mccrum@maastrichtuniversity.nl (C. McCrum).

¹ All authors contributed equally to this work.

Nomenclature			
AP	anteroposterior	l	effective pendulum length
b	distance between CoP and XcoM	MoS	margin of stability
b_{avg}	average distance between CoP and XcoM over a step	ML	mediolateral
$b_{initial}$	distance between CoP and XcoM at initial contact	u_{min}	minimum boundary CoP
b_{min}	minimal distance between CoP and XcoM in a step	u_{max}	maximum boundary CoP
BoS	base of support	v_x	CoM velocity
CoM	center of mass	$v_{x T}$	relative CoM velocity
CoP	center of pressure	v_T	treadmill velocity
eBoS	effective base of support	x	horizontal projection of the CoM on the ground
g	acceleration of gravity = 9.81 m s^{-1}	XcoM	extrapolated center of mass
		ω_0	eigenfrequency of pendulum = $\sqrt{\frac{g}{l}}$

with work by Townsend (1985), who was the first to present a model showing that stable gait can be achieved by foot placement, taking the CoM position and velocity at the time of foot placement into account in an inverted pendulum model with a moveable BoS.

Notably, it was Hof who showed that stability in dynamic situations can be predicted by simple mechanical reasoning (Fig. 1; Hof, 2007, 2008; Hof et al., 2005). Derived from the linear inverted pendulum model, he introduced and coined the term ‘extrapolated center of mass’ (XcoM). The proposed vector quantity XcoM is the velocity and eigenfrequency adjusted projection of the CoM. The XcoM is calculated as

$$XcoM = x + \frac{v_x}{\omega_0} \quad (1)$$

in which x is the vertical projection of the CoM on the ground and v_x is the velocity of the CoM. The eigenfrequency, a constant related to stature is denoted as

$$\omega_0 = \sqrt{\frac{g}{l}} \quad (2)$$

where g is the gravitational acceleration and l is the effective pendulum length (see Box 1). From this, stability can be quantified as the minimum signed distance from the XcoM to the boundaries of the BoS, b_{min} .

One of the limitations when estimating the MoS is the assumption of an infinitely fast CoP displacement, whereas in reality there is a finite reaction and displacement time of the CoP due to muscle activation dynamics necessary to displace the CoP. This problem has been discussed for standing balance but is still unaddressed for walking (Hof and Curtze, 2016). Experimental results on humans standing on two feet undergoing sudden postural perturbations showed that only a fraction, some 30 %, of the area of the physical BoS can effectively be used (eBoS) to achieve stability (Hof and Curtze, 2016). In summary, two key

concepts emerged from Hof’s research to describe stability in different scenarios: the positions XcoM and the interval eBoS.

3. The margin of stability during standing and walking

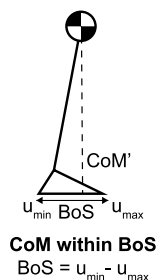
During quiet standing, the CoM and XcoM projected positions on the ground coincide closely due to the low CoM velocities. The XcoM will always remain within the boundaries of the BoS resulting in positive b_{min} . In more dynamic situations, like standing on tiptoes, the XcoM can be outside of the BoS, resulting in negative b_{min} (Hof et al., 2005). Such negative margins can only be recovered using counter-rotation movements of the trunk, arms or legs in the absence of external support (Hof et al., 2005). These movements go beyond what is described within the inverted pendulum model (Hof, 2007; Otten, 1999).

During walking, the XcoM precedes the sinusoidal trajectory of the CoM (Fig. 2). To maintain a steady walking speed, humans place their feet at a certain distance posterior and lateral to the XcoM, thereby redirecting the movement of the XcoM and CoM. The distance at which the CoP under the foot is placed to the XcoM is a measure of the instantaneous mechanical stability of the body configuration during walking. In the mediolateral (ML) direction, a negative b_{min} (XcoM lateral to CoP) represents a situation in which the inverted pendulum falls beyond the BoS, requiring a lateral shift of the CoP, e.g., by a crossover step, to maintain forward walking. A positive b_{min} indicates that the XcoM does not exceed the lateral CoP position and the pendulum is falling towards the stepping foot.

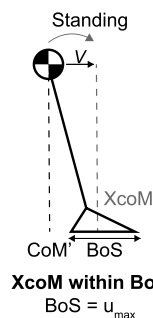
While the BoS is clearly defined by the stepping feet in ML direction, this is not the case in the anterior direction. To move forward at a steady velocity, the combined CoP stays behind the XcoM at all times during the gait cycle (Fig. 2; see also Hof (2008), equations 21 and 22). Therefore, the MoS is negative in cases where the XcoM exceeds the CoP in the

Conceptual evolution of the extrapolated center of mass (XcoM)

“Classic” inverted pendulum model (Winter, 1995)



Extrapolated center of mass (Hof et al., 2005; 2007; 2008)



Effective base of support (Hof & Curtze, 2016)

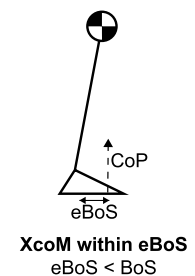
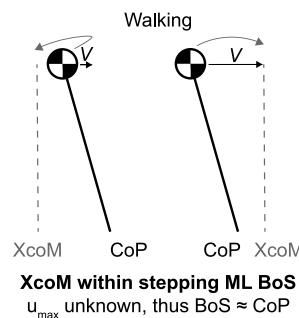


Fig. 1. Conceptual evolution of the extrapolated center of mass.

Box 1

Recommendations on the calculation and interpretation of the margin of stability

Calculation of the extrapolated center of mass and the margin of stability.

The extrapolated center of mass (m) is calculated as

$$X_{\text{CoM}} = x + \frac{v_x}{\omega_0} \quad (3)$$

in which x is the vertical projection of the CoM (m) on the ground, v_x is CoM velocity (m/s), $\omega_0 = \sqrt{\frac{g}{l}}$ is the eigenfrequency of the pendulum, g is the gravitational constant (m/s^{-2}), and l is effective pendulum length (m). For movements in the frontal plane, the effective pendulum length of the compound pendulum can be estimated as 1.34 times the trochanteric height and measured from the lateral malleolus to greater trochanter (Massen and Kodde, 1979). For the sagittal plane, the effective pendulum length can be estimated as 1.24 times trochanteric height (Geursen et al., 1976). Note that during treadmill walking v_x must account for belt speed (v_T) in the anteroposterior direction ($v_x = v_{x|T} + v_T$), no adjustments are needed in the mediolateral direction or during overground walking.

The margin of stability (m) is calculated as

$$\text{MoS} = \text{BoS} - X_{\text{CoM}} \quad (4)$$

Reporting convention of the margin of stability

A negative MoS indicates the direction of instability, the inverted pendulum accelerates away from the BoS.

$ML\text{MoS} = ML\text{BoS} - MLX_{\text{CoM}}$, i.e., negative if the ML XCoM is lateral to the ML BoS.

$AP\text{MoS} = AP\text{BoS} - APX_{\text{CoM}}$, i.e., negative if the AP XCoM is anterior to the AP BoS.

Boundary of the base of support

In situations where the effective BoS is unknown, such as while walking, the combined CoP should be used as a proxy of the BoS.

Estimation of the center of mass

An accurate estimation of CoM velocity and position is accomplished from force plate data using a filtering procedure, i.e., double integration of the ground reaction force divided by mass (Hof, 2005; Buurke et al., 2023), or by using a full-body kinematic model. Reduced kinematic models may be used only if both the position of the CoM and the velocity of the CoM is captured with sufficient accuracy during a given task. Careful, task-specific validation is warranted.

Timing of the margin of stability during the gait cycle

The true MoS, the most unstable point in a gait cycle, is advised to be defined as the minimal signed distance b_{min} , between the CoP and the XCoM in the ML direction.

The margin of stability is not an indicator of global gait stability

The MoS should not be used as an indicator for global gait stability in a general sense and should rather be interpreted as an instantaneous measure of mechanical stability of the body configuration. The MoS is directly related to minimal impulse needed to destabilize a person (Hof et al., 2005).

forward or lateral directions (Hof, 2008).

Note that Hof et al. (2005) did not introduce the MoS as a measure of stability in the anteroposterior (AP) direction as the XCoM is not moving towards a boundary but rather always exceeds the boundary. However, there are a few scenarios in which a clear AP boundary can be defined. As a person terminates gait, the negative AP MoS will change to a MoS of zero, which represents the configuration in which the inverted pendulum comes to a perfect standstill above the CoP (Fig. 3), terminating gait. Further experimental validation of the concept in the AP direction was provided by Arampatzis et al. (2008) and Curtze et al. (2010) using forward lean-and-release tasks. Here, stability recovery performance following the lean-and-release could be distinguished by positive and negative AP MoS values of the first recovery step. A positive AP MoS indicates that the stepping foot was anterior to the XCoM, and stability could be regained during the initial stepping response. A negative AP MoS suggests that the initial recovery step was too short to regain stability in one step.

4. Estimating the margin of stability

In the following sections, we will discuss how to define the boundary

of the BoS in standing and walking, estimate the CoM and XCoM position and velocity and choose the timing of the MoS in walking. Due to specific assumptions of the inverted pendulum model, e.g., that the pendulum length does not change, that the inverted pendulum is non-deformable or rigid, or that no external forces, other than gravity and ground reaction forces, should act upon the model (Geursen et al., 1976; Hof et al., 2005; Winter, 1995), certain tasks may lead to violations of the model, such as walking with a cane or handrail support. Users should keep this in mind and avoid applying the MoS to balance and gait tasks in which the participants' movement departs substantially from one that can reasonably be modeled by the inverted pendulum model. We provide recommendations for best practices for calculating the margin of stability (Box 1) and a reporting checklist (Appendix A).

4.1. Defining the boundary of the base of support

The boundaries of the BoS describe the possible area in which the CoP (u) can travel. In the original definition (Hof et al., 2005), the boundary of the BoS for standing is u_{max} . Given the finite reaction of displacement time of the CoP, the effective BoS (eBoS) that can be used for stability control is substantially smaller, only $\frac{1}{3}$ of the physiological

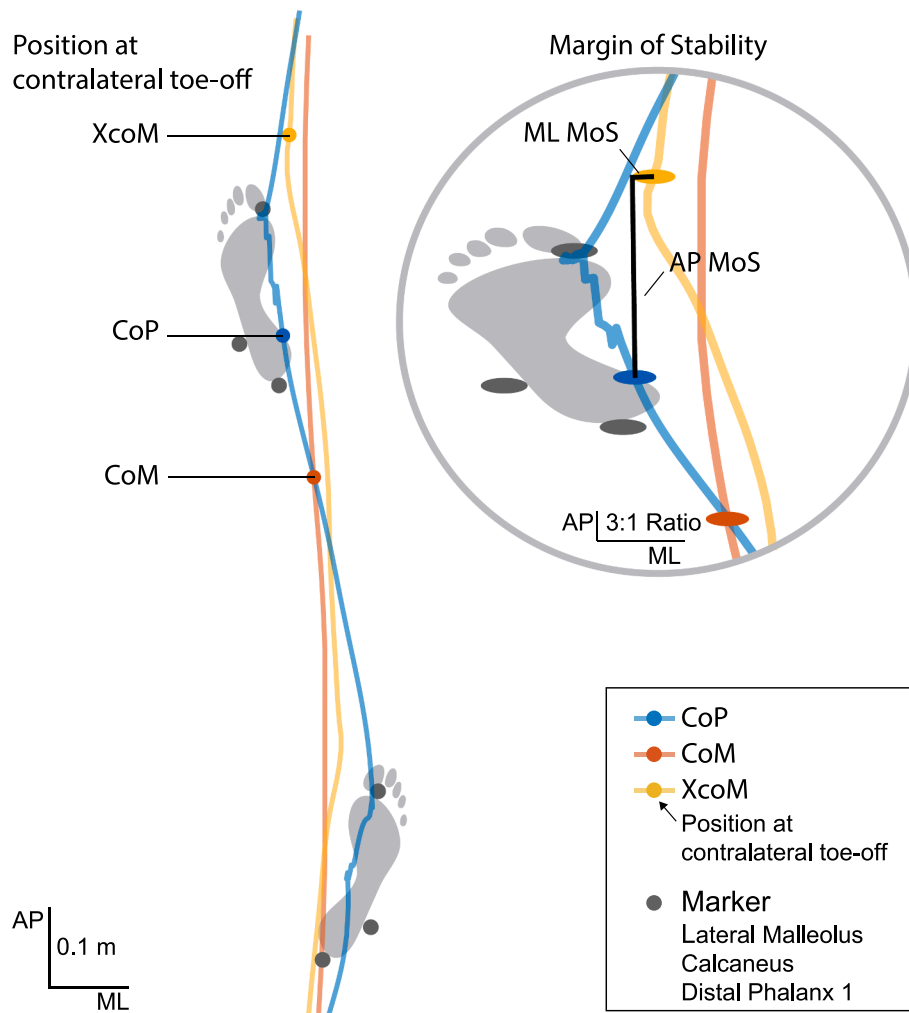


Fig. 2. Instantaneous position of the XcoM, CoP and CoM during gait at contralateral toe-off and the resultant margin of stability, i.e., the indicated distance (black lines) between CoP and XcoM in AP and ML direction.

BoS (Hof and Curtze, 2016). Therefore, to calculate the boundary of the BoS while standing, experimentally determining the eBoS, when possible or practical, would be the most valid approach. During walking, the XcoM is outside of the BoS of either stance foot (Hof, 2008) for most of the time and the eBoS has not been defined. The CoP, as the location of the ground reaction force acting on the XcoM, is therefore the preferred reference point for calculation of the MoS (i.e., CoP - XcoM) during walking, as in Hof (2007, 2008); Hof et al. (2005); Hof et al. (2010).

Alternative definitions of the BoS (anatomical boundary or area between the feet) during standing and walking lead to an over- or underestimation of the BoS boundary. A marker placed on the physical boundary of the foot, e.g., the medial malleolus, the lateral malleolus, the foot's distal phalanx I or dorsal on the calcaneus, can be too far medial, lateral, anterior or posterior to the effective u_{max} and will lead to an over- or underestimation of the ML and AP MoS (Figs. 2 and 4). Note that even during forward and backward leaning, the AP CoP does not reach the anatomical boundary of the foot where a marker might be placed (Fig. 3 in Hof et al., 2005 and Figs. 1 and 2 in Eysel-Gosepath et al., 2016).

4.2. Estimation of the (extrapolated) center of mass

Valid calculation of the XcoM requires accurate estimation of both the CoM position and velocity. Hof et al. (2005) introduced a simple method to estimate the CoM projection at ground level from force plate

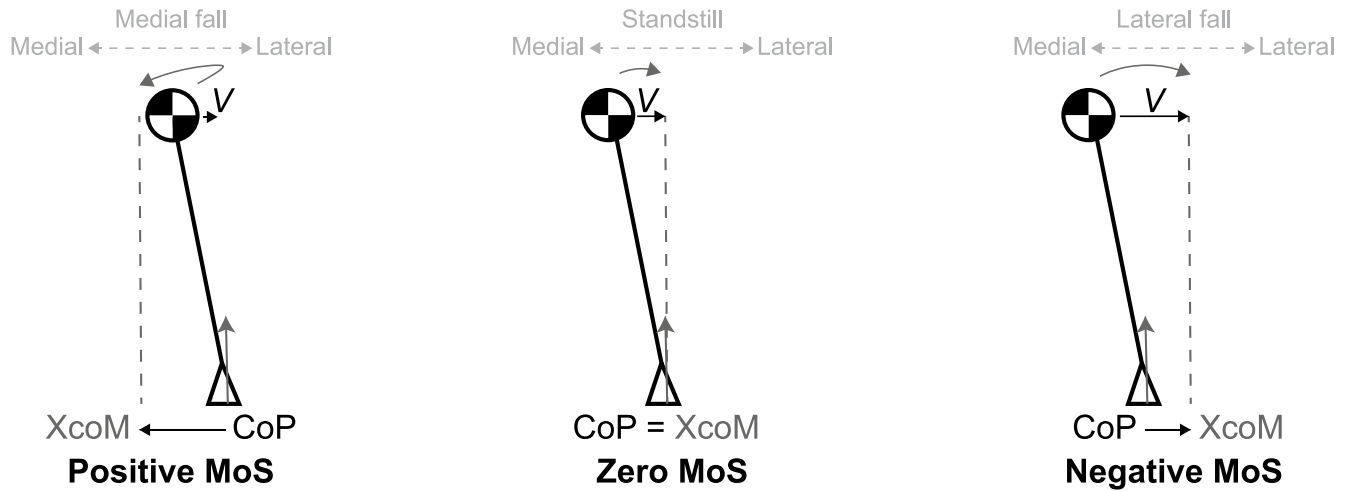
data, which can be used to calculate the MoS (see also Hof, 2005). Despite the relative simplicity of Hof's proposed force plate method, kinematic, segment-based CoM estimations have been dominant for calculating the MoS in the literature since. For a detailed comparison of a force plate method with a kinematic, multi-segment body model see Buurke et al. (2023).

The full-body kinematic segmented-based CoM estimation has been followed by simplified, reduced kinematic models to estimate CoM position and velocity. A critical consideration for such reduced kinematic models is that while some point on the trunk reasonably corresponds to the whole-body CoM during walking, this does not hold true for CoM velocity (Zelik and Adamczyk, 2016). For more dynamic movements and tasks that involve acute stability recovery actions, a single point on the trunk may not suffice for either. Despite the recent popularity of reduced kinematic models, few validation studies of reduced kinematic models for specific tasks and setups have been conducted (e.g., Süptitz et al. (2013)) and the potential problems with reduced kinematic models for estimating the CoM position and velocity during gait and turning have been well documented (Havens et al., 2018; Huntley et al., 2017; Vanrenterghem et al., 2010). As a result, caution is warranted when using reduced kinematic models and thorough, task and setup-specific validation is recommended.

4.3. The choice of timing when assessing the margin of stability

During walking, the choice of timing when assessing the MoS is not

Mediolateral margin of stability



Anteroposterior margin of stability

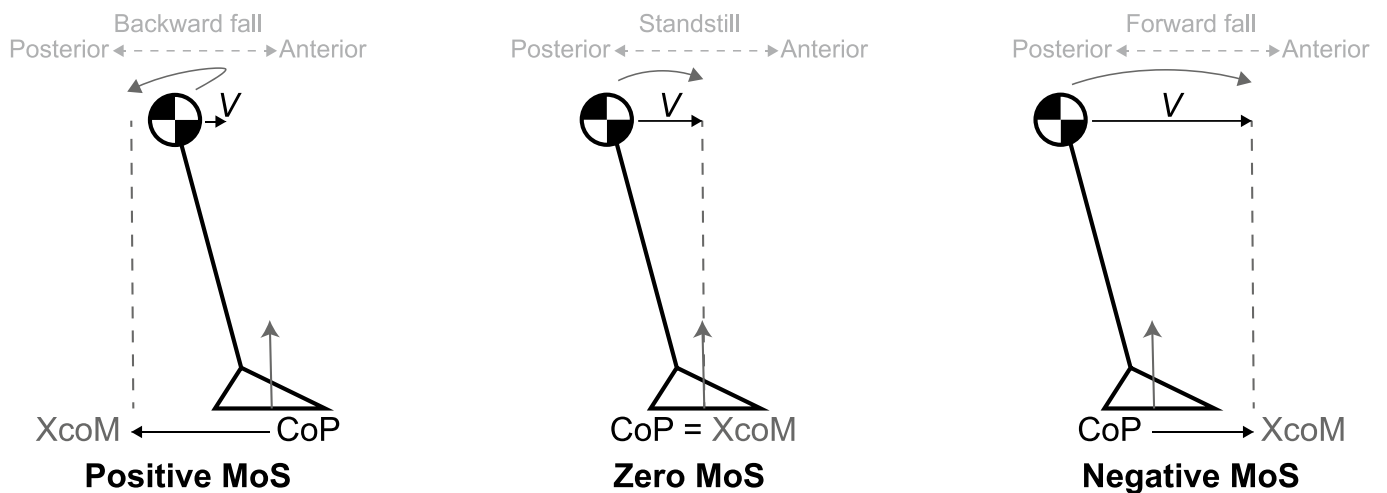


Fig. 3. Configurations of the XcoM and CoP and their resulting mediolateral MoS (top) and anteroposterior MoS (bottom). Note that the magnitude of the vector v increases from left to right with, consequently, a changing XcoM position.

arbitrary and should be carefully considered. In the literature, the MoS has been estimated at multiple instances in the gait cycle (Fig. 4). However, in the original definition by Hof et al. (2005), the minimum spatial ML MoS (b_{min}) was calculated as the minimal signed ML distance between the XcoM and the CoP during the single stance phase of walking. Generally, b_{min} occurs close to the moment of contralateral toe-off (Hof et al., 2005; Hof et al., 2007). A relative comparison of the MoS at initial contact ($b_{initial}$) and the average (b_{avg}) over a step was used to describe the contribution of the lateral ankle strategy during prosthetic walking (Hof et al., 2007). Yet, during double support, a linear inverted pendulum model is less valid, since it does not account for push-off and collision impulses (Donelan et al., 2002). Contrary to the ML MoS, the AP MoS is always negative during steady-state walking (see Fig. 4C), because at foot contact, the CoP is placed at a certain, 'constant' distance behind/posterior to the XcoM to maintain a steady gait speed (Hof, 2008).

4.4. Additional considerations for estimating the margin of stability during walking

Due to the XcoM accounting for the velocity of the CoM, the AP MoS during walking is tightly linked to gait speed, with increasing speeds leading to more negative AP MoS (Hof, 2008; McCrum et al., 2019; Süptitz et al., 2012). Reporting of the MoS in the AP direction has been inconsistent in the literature (e.g., Hak et al. (2013)); however given the instability in this direction (XcoM is anterior to the CoP), able-bodied people walking with a steady forward velocity should be reported as having negative AP MoS (Hof (2008), Equations 21 and 22).

The experimental context may bring some additional considerations for calculating the MoS during walking. Two specific examples are treadmill walking and curved walking or turning. To estimate the velocity of the CoM during treadmill walking, the relative motion (Galileo, 1632) of the treadmill belt needs to be accounted for by adding the belt velocities (Hof, 2008; Süptitz et al., 2012). This correction has been overlooked in some applications of the MoS during treadmill walking (Buurke et al., 2020; Darter et al., 2018; Eichenlaub et al., 2023; Kao

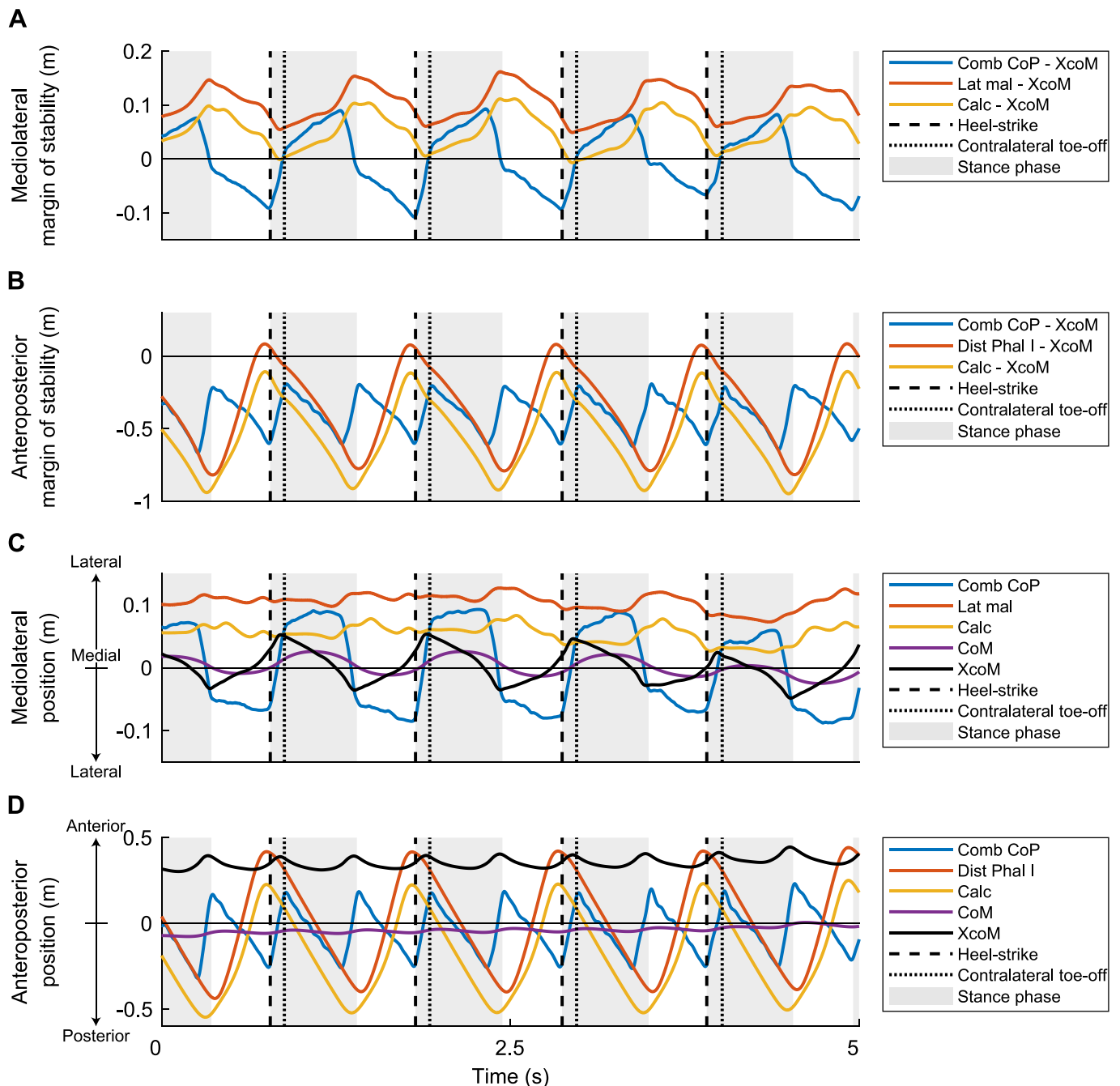


Fig. 4. Illustration of the implications of base of support boundary and gait event choices in experimental data of a representative subject walking at 1.4 m s^{-1} (data only shown for one side; data from Buurke et al. (2023)). The time instance of heel-strike is visualized as a vertical dashed line and contralateral toe-off as a vertical dotted line in all subplots. A) The mediolateral margin of stability calculated as the mediolateral distance between the extrapolated center of mass (XcoM) and the combined center of pressure (Comb CoP), the lateral malleolus marker (Lat mal), and the Calcaneus marker (Calc). The difference in mediolateral margin of stability between CoP and marker-based is up to 20 cm at heel-strike and 5 cm at contralateral toe-off. The marked difference in amplitude and phase-shift depending on base of support definition should be noted. Note that during the swing phase, no GRF is acting on the XcoM and no MoS can be assumed for the shown foot. B) The anteroposterior margin of stability calculated as the distance between the anteroposterior XcoM and the Comb CoP, the Distal Phalanx 1 marker (Dist Phal I), and Calc. The difference in anteroposterior margin of stability between CoP and marker-based is up to 60 cm at heel-strike and 15 cm at contralateral toe-off. The marked difference in amplitude and phase-shift depending on base of support definition should be noted. C) The mediolateral position of the Comb CoP, Lat mal, Calc, Center of Mass (CoM) and XcoM. D) The anteroposterior position of the Comb CoP, Dist Phal I, Calc, CoM, and XcoM.

et al., 2018; McAndrew Young and Dingwell, 2012; McAndrew Young et al., 2012). Alternatively, at each instant the distance traveled can be added to the CoP and CoM positions before CoM velocity and XcoM are calculated (Fig. 1 in Hak et al., 2013). A lack of adjustment for treadmill speed can be suspected when the AP MoS values are unrealistically large and positive, alongside XcoM position values that are unrealistically

small. Regarding curved walking and turning, the global and local reference frames fall out of alignment when gait diverges from straight ahead. To account for this constant change in reference frame during curved walking and turning, kinematic data need to be rotated to a trajectory-fixed or body-fixed reference frame before extracting XcoM position and MoS (e.g., He et al. (2018); Fino et al. (2020); for a detailed

discussion, see Ho et al. (2023)). Walking and turning follow the simple rule that one needs to be unstable in the direction of heading.

5. Interpreting the margin of stability

In keeping with Hof et al. (2005), the MoS is an instantaneous measure of mechanical stability of the body configuration directly related to the minimal impulse needed to destabilize a person (Hof et al., 2005), equation 8). A stable or unstable MoS can only describe the instantaneous mechanical stability of the person and does not necessarily indicate their global gait stability or their general fall risk while walking, which is evidenced by multiple studies reporting larger MoS values in groups with increased risk of falls which has been suggested to be a compensation strategy for various acute or chronic deficits (Buurke et al., 2020; Hof et al., 2007; Hohne et al., 2011; Lin et al., 2022; Vistamehr et al., 2016). The unilateral increase in ML MoS that can be observed in groups with gait asymmetries, for instance in amputee gait (Gates et al., 2013; Hof et al., 2007) and post-stroke gait (Buurke et al., 2020; Tisserand et al., 2018), also illustrates that a higher MoS does not necessarily reflect global gait stability or general fall risk. Rather, an asymmetric ML MoS in these populations demonstrates how humans can exploit the passive dynamics of walking to efficiently increase instantaneous mechanical stability by altering step width and bilateral stance times (Buurke et al., 2019; Hof, 2021). Asymmetries in the underlying gait pattern are thereby exploited to unilaterally increase the ML MoS on the prosthetic, paretic or otherwise affected side, for efficiency and stability of the gait pattern. Though the observation of large MoS in fall-prone individuals may seem paradoxical (Kazanski et al., 2022), it is consequential, in that they appear to exploit the natural dynamics of the mechanical system (linear IP model) thereby reducing the need for active neural control (Hof, 2021). In summary, MoS is a purely mechanical measure of instantaneous gait stability and does not reflect global gait stability or its underlying neural control.

6. Conclusion

The XcoM concept is an extension of the classic inverted pendulum

model to describe stability in dynamic situations. The *margin of stability* can be derived from the XcoM concept as a measure of instantaneous mechanical stability. Like any model, the XcoM is valid only in situations in which the underlying assumptions of the model are met, specifically those of a linearized pendulum. Key limitations include that the pendulum should be non-deformable, no external forces (e.g., use of a cane or handrail) should be applied, and counter-rotation movements that go beyond the linearized IP model, all discussed in greater detail above, are not permissible. Different methods for estimating the XcoM and MoS are not interchangeable and will affect results and interpretation.

CRediT authorship contribution statement

Carolyn Curtze: Writing – review & editing, Writing – original draft, Visualization, Methodology, Conceptualization. **Tom J.W. Buurke:** Writing – review & editing, Writing – original draft, Visualization, Methodology, Conceptualization. **Christopher McCrum:** Writing – review & editing, Writing – original draft, Project administration, Methodology, Conceptualization.

Declaration of competing interest

The authors declare that they have no known competing financial interests or personal relationships that could have appeared to influence the work reported in this paper.

Acknowledgements

Carolyn Curtze was supported by the Center of Biomedical Research Excellence grant (P20GM109090) from NIGMS/NIH. Tom Buurke was funded by Research Foundation - Flanders (FWO): 12ZJ922N. Christopher McCrum was supported by a grant from NWO/ZonMw (Rubicon; 452020220).

Appendix A. Margin of stability reporting checklist

Topic	#	Description	Reported Yes/No/ NA
Calculating			
CoM	1	The CoM was estimated based on ground reaction forces, a full-body kinematic model, or a validated reduced kinematic model.	
XcoM	2	The XcoM was calculated as: $XcoM = x + \frac{v_x}{\omega_0}$	
Relative velocities	3	The relative motions are accounted for, e.g., surface speed in treadmill walking. Thus, $v_x = v_{x T} + v_T$ in which $v_{x T}$ is the velocity of the CoM with respect to treadmill and v_T is the velocity of the treadmill belt.	
MoS	4	The MoS was calculated as: $MoS = BoS - XcoM$	
Asymmetric MoS	5	The MoS was calculated for the left and right leg separately.*	
Reporting			
MoS	6	Mean and distribution are reported to aid interpretation in the walking context (i.e., perturbed vs. unperturbed, treadmill vs. overground), alongside potential asymmetries and spatiotemporal gait parameters.	
Direction of the MoS	7	The direction of the margin of stability was reported in all written text, figures and tables.	
Timing of the MoS	8	The local minima or instance at which the MoS was calculated was reported.	
Boundary of the BoS	9	The definition of the boundary of the BoS was reported.	
Walking speed	10	Walking speed was reported to aid interpretation of the AP MoS	

(continued on next page)

(continued)

Topic	#	Description	Reported Yes/No/ NA
Reduced kinematic model	11	Specifications and references to the validation of reduced kinematic models were provided.**	
Interpreting			
Interpreting the MoS	12	The MoS was interpreted as an instantaneous, but not global measure of mechanical stability.	

*Only applicable in case of potential asymmetries, e.g., in unilateral perturbations, unilateral assistance or populations with gait asymmetries.

**Only applicable if a reduced kinematic model was used.

An editable version of this checklist can be downloaded from: <https://osf.io/hkx46/>.

References

- Aramatzis, A., Karamanidis, K., Mademli, L., 2008. Deficits in the way to achieve balance related to mechanisms of dynamic stability control in the elderly. *J. Biomech.* 41, 1754–1761.
- Buurke, T.J.W., Lamothe, C.J.C., van der Woude, L.H.V., Hof, A.L., den Otter, R., 2019. Bilateral temporal control determines mediolateral margins of stability in symmetric and asymmetric human walking. *Sci. Rep.* 9, 12494.
- Buurke, T.J.W., Liu, C., Park, S., den Otter, R., Finley, J.M., 2020. Maintaining sagittal plane balance compromises frontal plane balance during reactive stepping in people post-stroke. *Clin. Biomech.* 80, 105135.
- Buurke, T.J.W., van de Venis, L., den Otter, R., Nonnekens, J., Keijsers, N., 2023. Comparison of ground reaction force and marker-based methods to estimate mediolateral center of mass displacement and margins of stability during walking. *J. Biomech.* 146, 111415.
- Curtze, C., Hof, A.L., Otten, B., Postema, K., 2010. Balance recovery after an evoked forward fall in unilateral transtibial amputees. *Gait Posture* 32, 336–341.
- Darter, B.J., Labrecque, B.A., Perera, R.A., 2018. Dynamic stability during split-belt walking and the relationship with step length symmetry. *Gait Posture* 62, 86–91.
- Donelan, J.M., Kram, R., Kuo, A.D., 2002. Simultaneous positive and negative external mechanical work in human walking. *J. Biomech.* 35, 117–124.
- Eichenlaub, E.K., Urrego, D.D., Sapovadiah, S., Allen, J., Mercer, V.S., Crenshaw, J.R., Franz, J.R., 2023. Susceptibility to walking balance perturbations in young adults is largely unaffected by anticipation. *Hum. Mov. Sci.* 89, 103070.
- Eysel-Gosepath, K., McCrum, C., Epro, G., Brüggemann, G.P., Karamanidis, K., 2016. Visual and proprioceptive contributions to postural control of upright stance in unilateral vestibulopathy. *Somatosens. Mot. Res.* 33, 72–78.
- Fino, P.C., Horak, F.B., Curtze, C., 2020. Inertial sensor-based centripetal acceleration as a correlate for lateral margin of stability during walking and turning. *IEEE Trans. Neural Syst. Rehabil. Eng.* 28, 629–636.
- Galileo, G., 1632. *Dialogue Concerning the Two Chief World Systems—Ptolemaic & Copernican* (Translated by Stillman Drake, University of California Press, 1967).
- Gates, D.H., Scott, S.J., Wilken, J.M., Dingwell, J.B., 2013. Frontal plane dynamic margins of stability in individuals with and without transtibial amputation walking on a loose rock surface. *Gait Posture* 38, 570–575.
- Geursen, J.B., Altena, D., Massen, C.H., Verduin, M., 1976. A model of the standing man for the description of his dynamic behaviour. *Agressologie* 17 specno, 63–69.
- Hak, L., Houdijk, H., Beek, P.J., van Dieen, J.H., 2013. Steps to take to enhance gait stability: the effect of stride frequency, stride length, and walking speed on local dynamic stability and margins of stability. *PLoS One* 8, e82842.
- Havens, K.L., Mukherjee, T., Finley, J.M., 2018. Analysis of biases in dynamic margins of stability introduced by the use of simplified center of mass estimates during walking and turning. *Gait Posture* 59, 162–167.
- He, C., Xu, R., Zhao, M., Guo, Y., Jiang, S., He, F., Ming, D., 2018. Dynamic stability and spatiotemporal parameters during turning in healthy young adults. *Biomed. Eng. Online* 17, 127.
- Ho, T.K., Kreter, N., Jensen, C.B., Fino, P.C., 2023. The choice of reference frame alters interpretations of turning gait and stability. *J. Biomech.* 151, 111544.
- Hof, A.L., 2005. Comparison of three methods to estimate the center of mass during balance assessment. *J. Biomech.* 38, 2134–2135.
- Hof, A.L., 2007. The equations of motion for a standing human reveal three mechanisms for balance. *J. Biomech.* 40, 451–457.
- Hof, A.L., 2008. The 'extrapolated center of mass' concept suggests a simple control of balance in walking. *Hum. Mov. Sci.* 27, 112–125.
- Hof, A.L., Curtze, C., 2016. A stricter condition for standing balance after unexpected perturbations. *J. Biomech.* 49, 580–585.
- Hof, A.L., Gazendam, M.G., Sinke, W.E., 2005. The condition for dynamic stability. *J. Biomech.* 38, 1–8.
- Hof, A.L., van Bockel, R.M., Schoppen, T., Postema, K., 2007. Control of lateral balance in walking. Experimental findings in normal subjects and above-knee amputees. *Gait Posture* 25, 250–258.
- Hof, A.L., Vermerris, S.M., Gjaltema, W.A., 2010. Balance responses to lateral perturbations in human treadmill walking. *J. Exp. Biol.* 213, 2655–2664.
- Hof, A.L., 2021. Afterthoughts concerning a previous paper (Hof, 2008), https://www.researchgate.net/publication/350313580_Afterthoughtspdf.
- Hohne, A., Stark, C., Brüggemann, G.P., Arampatzis, A., 2011. Effects of reduced plantar cutaneous afferent feedback on locomotor adjustments in dynamic stability during perturbed walking. *J. Biomech.* 44, 2194–2200.
- Huntley, A.H., Schinkel-Ivy, A., Aqul, A., Mansfield, A., 2017. Validation of simplified centre of mass models during gait in individuals with chronic stroke. *Clin. Biomech.* 48, 97–102.
- Iqbal, K., Pai, Y., 2000. Predicted region of stability for balance recovery: motion at the knee joint can improve termination of forward movement. *J. Biomech.* 33, 1619–1627.
- Kao, P.C., Pierro, M.A., Booras, K., 2018. Effects of motor fatigue on walking stability and variability during concurrent cognitive challenges. *PLoS One* 13, e0201433.
- Kazanski, M.E., Cusumano, J.P., Dingwell, J.B., 2022. Rethinking margin of stability: Incorporating step-to-step regulation to resolve the paradox. *J. Biomech.* 144, 111334.
- Lin, J.T., Hsu, C.J., Dee, W., Chen, D., Rymer, W.Z., Wu, M., 2022. Anodal transcutaneous DC stimulation enhances learning of dynamic balance control during walking in humans with spinal cord injury. *Exp. Brain Res.* 240, 1943–1955.
- Massen, C.H., Kodde, L., 1979. A model for the description of left-right stabilograms. *Agressologie* 20, 107–108.
- McAndrew Young, P.M., Dingwell, J.B., 2012. Voluntary changes in step width and step length during human walking affect dynamic margins of stability. *Gait Posture* 36, 219–224.
- McAndrew Young, P.M., Wilken, J.M., Dingwell, J.B., 2012. Dynamic margins of stability during human walking in destabilizing environments. *J. Biomech.* 45, 1053–1059.
- McCrum, C., Willems, P., Karamanidis, K., Meijer, K., 2019. Stability-normalised walking speed: A new approach for human gait perturbation research. *J. Biomech.* 87, 48–53.
- Otten, E., 1999. Balancing on a narrow ridge: biomechanics and control. *Philos Trans. R. Soc. Lond. B Biol. Sci.* 354, 869–875.
- Pai, Y.C., Maki, B.E., Iqbal, K., McIlroy, W.E., Perry, S.D., 2000. Thresholds for step initiation induced by support-surface translation: a dynamic center-of-mass model provides much better prediction than a static model. *J. Biomech.* 33, 387–392.
- Pai, Y.C., Patton, J., 1997. Center of mass velocity-position predictions for balance control. *J. Biomech.* 30, 347–354.
- Süptitz, F., Karamanidis, K., Moreno Catala, M., Brüggemann, G.P., 2012. Symmetry and reproducibility of the components of dynamic stability in young adults at different walking velocities on the treadmill. *J. Electromyogr. Kinesiol.* 22, 301–307.
- Süptitz, F., Moreno Catala, M., Brüggemann, G.P., Karamanidis, K., 2013. Dynamic stability control during perturbed walking can be assessed by a reduced kinematic model across the adult female lifespan. *Hum. Mov. Sci.* 32, 1404–1414.
- Tisserand, R., Armand, S., Allali, G., Schnider, A., Baillieux, S., 2018. Cognitive-motor dual-task interference modulates mediolateral dynamic stability during gait in post-stroke individuals. *Hum. Mov. Sci.* 58, 175–184.
- Townsend, M.A., 1985. Biped gait stabilization via foot placement. *J. Biomech.* 18, 21–38.
- Vanrenterghem, J., Gormley, D., Robinson, M., Lees, A., 2010. Solutions for representing the whole-body centre of mass in side cutting manoeuvres based on data that is typically available for lower limb kinematics. *Gait Posture* 31, 517–521.
- Vistamehr, A., Kautz, S.A., Bowden, M.G., Neptune, R.R., 2016. Correlations between measures of dynamic balance in individuals with post-stroke hemiparesis. *J. Biomech.* 49, 396–400.
- Watson, F., Fino, P.C., Thornton, M., Heracleous, C., Loureiro, R., Leong, J.J.H., 2021. Use of the margin of stability to quantify stability in pathologic gait – a qualitative systematic review. *BMC Musculoskelet. Disord.* 22, 597.
- Winter, D.A., 1995. Human balance and posture control during standing and walking. *Gait Posture* 3, 193–214.
- Zelik, K.E., Adamczyk, P.G., 2016. A unified perspective on ankle push-off in human walking. *J. Exp. Biol.* 219, 3676–3683.