

University of Groningen

Modelling land use dynamics in socio-ecological systems

Termansen, Mette; Chapman, Daniel S.; Quinn, Claire H.; Fraser, Evan D.G.; Jin, Nanlin; Beharry-Borg, Nisha; Hubacek, Klaus

Published in:
Advances in Ecological Research

DOI:
[10.1016/bs.aecr.2019.03.002](https://doi.org/10.1016/bs.aecr.2019.03.002)

IMPORTANT NOTE: You are advised to consult the publisher's version (publisher's PDF) if you wish to cite from it. Please check the document version below.

Document Version
Publisher's PDF, also known as Version of record

Publication date:
2019

[Link to publication in University of Groningen/UMCG research database](#)

Citation for published version (APA):

Termansen, M., Chapman, D. S., Quinn, C. H., Fraser, E. D. G., Jin, N., Beharry-Borg, N., & Hubacek, K. (2019). Modelling land use dynamics in socio-ecological systems: A case study in the UK uplands. *Advances in Ecological Research*, 60, 125-152. <https://doi.org/10.1016/bs.aecr.2019.03.002>

Copyright

Other than for strictly personal use, it is not permitted to download or to forward/distribute the text or part of it without the consent of the author(s) and/or copyright holder(s), unless the work is under an open content license (like Creative Commons).

The publication may also be distributed here under the terms of Article 25fa of the Dutch Copyright Act, indicated by the "Taverne" license. More information can be found on the University of Groningen website: <https://www.rug.nl/library/open-access/self-archiving-pure/taverne-amendment>.

Take-down policy

If you believe that this document breaches copyright please contact us providing details, and we will remove access to the work immediately and investigate your claim.

Downloaded from the University of Groningen/UMCG research database (Pure): <http://www.rug.nl/research/portal>. For technical reasons the number of authors shown on this cover page is limited to 10 maximum.



Modelling land use dynamics in socio-ecological systems: A case study in the UK uplands

Mette Termansen^{a,*}, Daniel S. Chapman^b, Claire H. Quinn^c,
Evan D.G. Fraser^d, Nanlin Jin^e, Nesha Beharry-Borg^f, Klaus Hubacek^{g,h}

^aFood and Resource Economics, University of Copenhagen, Frederiksberg C, Denmark

^bBiological and Environmental Sciences, Faculty of Natural Science, University of Stirling, Stirling, United Kingdom

^cSustainability Research Institute, School of Earth and Environment, University of Leeds, Leeds, United Kingdom

^dDepartment of Geography, Environment, and Geomatics, University of Guelph, Guelph, ON, Canada

^eDepartment of Computer and Information Sciences, Northumbria University, Newcastle upon Tyne, United Kingdom

^fCentrascape Mid Centre Mall Compound, Chaguanas, Trinidad

^gCenter for Energy and Environmental Sciences (IVEM), Energy and Sustainability Research Institute Groningen (ESRIG), University of Groningen, Groningen, The Netherlands

^hInternational Institute for Applied Systems Analysis, Laxenburg, Austria

*Corresponding author: e-mail address: mt@ifro.ku.dk

Contents

1. Introduction	126
2. Methodology and data	129
2.1 The study site	129
3. Conceptual model overview	131
4. Data	132
4.1 Data collected to characterise the land managers' behaviour	132
4.2 Data used for the habitat succession model	135
5. Model formulation and parameterisation	135
5.1 Behavioural model	135
5.2 Habitat dynamics model	137
5.3 Simulation procedure	139
5.4 Analysis of simulated data	139
6. Results	139
6.1 Behavioural model specification	139
7. Predicted impact on stocking densities	141
8. Predicted impact on burning activities	143
9. Predicted impact on land cover	144
10. Discussion and conclusion	146
Acknowledgements	148
References	149
Further reading	152

Abstract

It is well-recognised that to achieve long-term sustainable and resilient land management we need to understand the coupled dynamics of social and ecological systems. Land use change scenarios will often aim to understand (i) the behaviours of land management, influenced by direct and indirect drivers, (ii) the resulting changes in land use and (iii) the environmental implications of these changes. While the literature in this field is extensive, approaches to parameterise coupled systems through integration of empirical social science based models and ecology based models still need further development. We propose an approach to land use dynamics modelling based on the integration of behavioural models derived from choice experiments and spatially explicit systems dynamics modelling. This involves the specification of a choice model to parameterise land use behaviour and the integration with a spatial habitat succession model.

We test this approach in an upland socio-ecological system in the United Kingdom. We conduct a choice experiment with land managers in the Peak District National Park. The elicited preferences form the basis for a behavioural model, which is integrated with a habitat succession model to predict the landscape level vegetation impacts. The integrated model allows us to create projections of how land use may change in the future under different environmental and policy scenarios, and the impact this may have on landscape vegetation patterns. We illustrate this by showing future projection of landscape changes related to hypothetical changes to EU level agricultural management incentives.

The advantages of this approach are (i) the approach takes into account potential environmental and management feedbacks, an aspect often ignored in choice modelling, (ii) the behavioural rules are revealed from actual and hypothetical choice data, which allow the research to test the empirical evidence for various determinants of choice, (iii) the behavioural choice models generate probabilities of alternative behaviours which make them ideally suited for integration with simulation models.

The paper concludes that the modelling approach offers a promising route for linking socio-economic and ecological features of socio-ecological systems. Furthermore, our proposed approach allows testing of the underlying socio-economic and environmental drivers and their interaction in real environmental systems.



1. Introduction

An overarching aim of land use change modelling in environmental research is first to understand how the spatial and temporal patterns of land managers' behaviours shape agricultural or forest systems (Agarwal et al., 2002). Second, how this leads to diverse environmental impacts, e.g., on biodiversity conservation (Drechsler et al., 2007), on water quality (Nainggolan et al., 2018) and on climate services (Prestele et al., 2017; Zandersen et al., 2016). Furthermore, models might also be designed to

inform policy debates by providing a framework to anticipate and test how land use patterns may change under different hypothetical future scenarios (e.g. [Tieskens et al., 2017](#); [Wolff et al., 2018](#)). Several interesting approaches have emerged to address different aspects of such research questions. In this paper, we focus on two of these, dynamic systems models and in particular agent based simulation models (ABMs) ([An, 2012](#)) and statistically based approaches using choice models (CMs) ([Train, 2009](#)).

In most cases, both ABMs and CMs have been used independently to understand the rationale and implications of land-use decisions. Several key developments in the application of ABMs to model land-use patterns have emerged over a long period of time (see e.g. [Agarwal et al., 2002](#); [Bousquet et al., 1998](#); [Huber et al., 2018](#); [Veldkamp and Verburg, 2004](#)). These contributions have addressed interactions among individuals to simulate land-use decisions of individual agents. For example, [Barreteau and Bousquet \(2000\)](#) used an ABM to understand the influence of existing social networks on the viability of an irrigated farming system in the Senegal River Valley. However, it is acknowledged that it is still challenging to move beyond hypothetical landscapes, and parameterise and validate the interactions needed to model real landscapes ([Huber et al., 2018](#)). Never the less, a few studies have attempted to develop more realistic systems (see e.g. [Evans and Kelley, 2004](#); [Tieskens et al., 2017](#)) and accounting for the role of decisions of heterogonous agents in land-use changes ([Huigen, 2004](#)). A similar line of land-use related contributions has sought to determine how new agricultural practices are adopted by a population of farmers to better understand diffusion of technology ([Balmann, 1997](#), [Berger, 2001](#), [Polhill et al., 2001](#); [Schreinemachers and Berger, 2011](#)).

Another research approach used to explain or predict land managers' decisions is choice experiment (CE) designed to parameterise choice models (CMs). These have been used to understand and predict farmers' land-use decisions under a variety of hypothetical scenarios using data based on individuals' responses collected using questionnaires. One such example is the study by [Baltas and Korka \(2002\)](#) that used a nested discrete choice model to analyse land-use allocation under risk. A number of choice modelling applications have investigated the determinants explaining farmers' participation in environmental programs that would eventually lead to changes in land-use ([Aslam et al., 2017](#); [Cooper and Keim, 1996](#); [Lynch et al., 2002](#); [Peterson et al., 2007](#); [Shaikh et al., 2005](#); [Vanslebrouck et al., 2002](#); [Vedel et al., 2015](#)). These studies have determined the probability of farmers' participation in hypothetical agricultural improvement

programs and estimated their willingness to accept (WTA) compensation for participation in these programs.

The two approaches outlined above, therefore, have complementary advantages for advancing how we integrate and model coupled social-ecological systems. The ABM has the advantage of being a dynamic framework, incorporating feedback mechanisms that allow behaviour to be investigated in coupled systems. However, the specification of human behaviour and its interaction with the natural resource is often highly abstract and few models in the literature are parameterised or validated using real spatially specific data. On the other hand, CMs have been developed to parameterise behavioural models and capture heterogeneity between agent types (Boxall and Adamowicz, 2002; Milon and Scrogin, 2006; Train, 2016). However, CEs have usually not been developed to analyse emergent system properties as agent. They are commonly assumed to be acting independently (perhaps with the exception of social interaction models e.g. Brock and Durlauf, 2006) and the dynamic environmental feedbacks are usually ignored. CMs do, however, have the potential to provide a theoretical and empirical foundation for the link between changing environments and the consequential responses of land managers. The combination of these two approaches to achieve a dynamically integrated model with empirically estimated behavioural rules will, therefore, offer an advancement to modelling of land use dynamics.

The combined use of ABMs and CMs appears to be rare in the literature on the environmental implications of land use decisions. One exception is the study combining a catchment scale hydrological simulation model with a behavioural model of homeowners lawn watering behaviour to improve prediction of water demand (Conrad and Yates, 2018). However, there are studies that integrate the two approaches in other fields. Notably, in the field of transportation studies aiming to link individual road user behaviour with aggregated traffic system dynamics (Dia, 2001; Takama and Preston, 2008). Takama and Preston investigate the effect of a road user charging scheme for visitors to the Upper Derwent Valley in the Peak District National Park. The authors use an ABM to incorporate an interaction term that accounts for congestion thereby enhancing the discrete choice model. Dia (2001) uses a discrete choice survey to obtain each driver's preferences and characteristics and each driver is then modelled as an agent. Agents interact with their environment and with other agents in the system by receiving and reacting to real-time traffic information. In the outdoor recreation context, Hunt et al. (2007) developed a landscape fisheries model

by using information from a revealed preference choice model and agent based models. Revealed preference data from each angler's trip and data on available fishing sites were used to parameterise an ABM for recreational fishing in Northern Ontario.

Building on the previous work, we propose an integrated ABM and CM by using a choice experiment to parameterise land managers behaviour in an agent based simulation model. We apply this approach in the upland ecosystems of the United Kingdom where land management is dominated by sheep and game bird production. To characterise agent behaviour we conduct a choice experiment with land managers in the Peak District National Park. The choice experiment was designed to reveal preferences for alternative production strategies under alternative scenarios of future change and to investigate the dependence of such choices on the changing environmental characteristics across the individuals' land management units. The choice data form the basis for a behavioural model, which is integrated with a habitat succession model, to form an integrated model of landscape habitat dynamics. The integrated model allows us to evaluate future changes in land use and the way these changes impact the environment under different environmental and policy scenarios. The data stems from an earlier study by [Chapman et al. \(2009\)](#). However in this study we take the analysis further to improve understanding of the underlying drivers of the dynamics of the joint production system. Furthermore, we illustrate how the coupled model can be used to analyse potential impacts of agri-environmental policy reforms. We illustrate this by showing future projections of landscape changes related to hypothetical changes to the level of the current EU agricultural subsidies. This scheme is also known as the single farm payment (SFP), which is an area-based payment. The payment schemes are currently being revised ([COM, 2017](#)) and it is therefore interesting to understand the impacts of proposed changes.



2. Methodology and data

2.1 The study site

The Peak District National park was established in 1951 and was the UK's first National Park. Its central location within easy reach of approximately 48% of England's population makes it one of the world's most visited national parks, with over 22 million visitor days a year ([Peak District National Park, 2004](#)). In addition to visitors, 38,000 people live within

the park boundaries (Office for National Statistics, 2003) and 12% of them are employed in agriculture. However, agriculture is financially marginal, most farmers rely on government subsidies and 93% of the national park is designated as a “Less Favoured Area” (European Commission Directive 75/268) (Dougill et al., 2006).

This study focused on the Dark Peak area in the north of the national park. The Dark Peak covers more than half of the national park, is predominantly on acidic peat soils over millstone grit and supports over 17,000 ha of heather moorland and almost 16,000 ha of blanket bog (Sustainable Uplands and Moors for the Future, 2007) (Fig. 1). Both of these habitats are recognised as internationally important. Both heather moorland and blanket bog are recognised as key biodiversity habitats (UK Biodiversity Steering Group, 1995), have been designated as Sites of Special Scientific Interest (SSSI) (English Nature, 2003) and are listed in the EU’s Habitats Directive (92/43/EEC) as requiring special conservation measures as Special Areas of

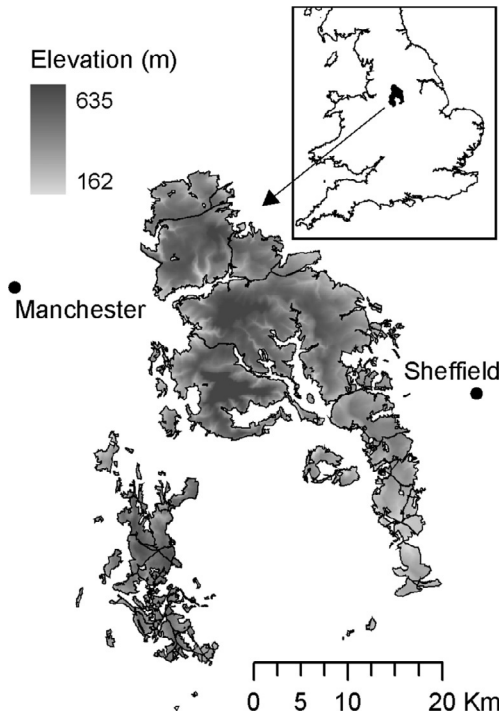


Fig. 1 Map of the open moorland within the Peak District and its location in Great Britain. To preserve confidentiality we are unable to show the exact location of the modelled management units.

Conservation (SAC) and Special Protection Areas (SPA). Extensive sheep farming and grouse (*Lagopus lagopus scoticus*) moor management form the dominant land uses.

Sheep production has traditionally been subsidised by the European Union's Common Agricultural Policy (CAP), while grouse production has not. However, proposed changes to the single farm payment, SFP, scheme may shift the incentives to managing different types of production systems (COM, 2017). The key habitat management tool for grouse moors is rotational burning of heather to provide a mosaic of different age heather stands to maximise territories for grouse (Watson and Miller, 1976).



3. Conceptual model overview

We describe the upland system as a joint production system of sheep and grouse in which the farmer chooses stocking density throughout the year, whether or not to burn and the burning schedule. We focused on sheep and grouse as they have historically been, and still is, important for both the upland economy and the characteristic upland vegetation and landscape. By choosing the stocking densities and burning schedule the farmer impacts the costs of the production system as they arise from maintenance of the sheep flock, in particular over wintering, and the labour costs involved in heather moorland management. We refer to the combination of summer and winter sheep stocking density and the burning schedule as the “moorland management regime”, and the individual management characteristics (e.g. summer grazing density) as the management attributes. It is through the choice of moorland management regime that farmers impact their own livelihood, the broader upland economy and the upland environment, both the vegetation itself and other environmental variables such as water quality, carbon storage, and biodiversity. The interdependence between the sheep and grouse relates to the abundance of the preferred habitat of sheep relative to grouse, which in turn is partially determined by the choice of management regime.

The aim is to model the choices that farmers make both under current conditions and under hypothetical changes to the current situation to identify the preferable management regimes, from a farmers point of view, under varying environmental and economic conditions. It is important to note that we do not assume that farmers aim to maximise production or income from their land, and we merely characterise the importance of environmental and

economic factors for variation in land management choices across the landscape. In other words, we test whether we can estimate an attractiveness (or “utility” using economic language) function of land management regimes by a combination of variables defining the moorland management regime, the environmental conditions of the land and the socio-economic conditions of the farmer. If actual and hypothetical choices are described well by the estimated model, this will help to understand better the spatial variation in management choices across the uplands and across upland farmers.

In this study, we test four basic hypotheses/relationships: (i) Land managers will display their relative preference for grouse production by choosing land management regimes favouring diverse heather age distributions; (ii) optimal stocking density and optimal burning regime (as perceived by the land managers) will vary across the landscape reflecting the variation in the carrying capacity for sheep and grouse and the land manager’s desire to keep management costs low by reducing the number of wintering sheep and the area of burning; (iii) the extent to which management choices will vary with socio-economic characteristics of the land manager and the condition under which the land is managed, i.e., ownership or tenancy agreements; (iv) the robustness of the perceived optimal moorland management to changes in the level of the single farm payment, SFP.

In the model, land managers choose the favoured management regime given the characteristics of the plot of land. This results in a change in vegetation cover (of predominantly heather and grass), which in turn changes the perceived optimal strategy of the land manager. We investigate the dynamics of the coupled system of land management choices and habitat response. We compare scenarios by testing the differences between simulation outputs when changing amount of the single farm payment. Changing the mean temperature uniformly across the landscape simulates the impacts that climate change may have.



4. Data

4.1 Data collected to characterise the land managers’ behaviour

Face-to-face interviews were carried out with land managers in the Dark Peak area in 2006 and 2007. Potential respondents were identified using two methods. An initial contact list was generated from meetings

with key stakeholders in the Peak District National Park. This allowed the interviews to be targeted only to land managers within the Dark Peak area and reduced the number of redundant contacts. Additional respondents were then identified using the snowball method (Bailey, 1982) where those taking part were then asked to identify others. It is important to note that land managers are often responsible for managing several areas with different management regimes. Therefore, each contact was asked separately about land management on all the different “land management units” under their control. We obtained complete observations of environmental and behavioural data for a total of 71 individual management units, representing 40% of the Dark Peak area. This was accomplished in 25 face-to-face-interviews.

Data were collected during the interviews using a standardised questionnaire based on both structured open-ended and closed-format questions. The questionnaire was piloted with key stakeholders before being used with respondents.

The first part of the questionnaire focused on identifying the type of land ownership (private versus tenancy) and the dominant land management activity carried out by the respondent (grouse moor management versus sheep farming). The extent of the land they managed was also identified using Ordnance Survey maps. Land was categorised into unique management units, reflecting heather moorland, rough grazing and improved pasture and the geographical boundaries between management units were recorded. The second part of the questionnaire was carried out for each of the identified management units and used a choice card for respondents to characterise their management. Respondents were first asked to characterise their current management strategies according to the variables on the card (Table 1) and this was recorded in the questionnaire. From this baseline respondents were then asked how their management would change under different hypothetical scenarios. In this paper we focus on the scenario related to changes in the single farm payment. In this scenario we asked land managers “What if the current business environment stayed the same but the payments you currently receive from the single farm subsidy scheme changed so that you received £X per hectare, would your management change?” X was drawn randomly from the following set: 10, 20, 30, 40, and 60. The number of repetitions (variations in X) of this experiment varied between interviews, depending on the number of management units, to limit the total amount of time spent on the questionnaire by each respondent. The maximum number of repetitions was four and the minimum two. This resulted in a total data set of 200 observations (Table 1).

Table 1 Data tested for the specification of the behavioural model.

Variable	Description	Source
Land Holding, LH	Geographical mapping of individual land holdings	Interviews
Management Unit, MU	Geographical mapping of areas with uniform management strategy. Digitised in ArcGIS	Interviews
Tenancy, T	Owned by land manager, land manager tenant on the land, land manager employed	Interviews
Dominant land use DOM	Land predominantly used for grazing, land predominantly used for grouse shooting, Land predominantly used for other purpose	Interviews
Grazing time, GT	The temporal extent of the grazing; no grazing, spring and summer, all year with 25% reduction in winter, all year	Interviews Choice card
Stocking Rate, SR	Stocking Rate when sheep are grassing the land; no grazing, 0.5 sheep/ha, 1 sheep/ha, 2 sheep/ha, 3 sheep/ha	Interviews Choice card
Stocking Density, SD	Average summer stocking density, calculated by combining GT and SR	Derived
Burning Frequency, BF	Frequency of burning in a management unit; every year, every other year, every third year, every fifth year, never	Interviews Choice card
Burning Proportion, BP	Proportion burned when management unit is burned; 0.5%, 10%, 15% and 20%	Interviews Choice card
Shannon Diversity Index, SH	Shannon-Weaver's Diversity Index of dwarf shrubs age distribution. Calculated from each management option (combination of BF and BP) in a simple dwarf shrub succession model on a 100 × 100 grid of dwarf shrub	Derived
Single Farm Payment, SFP	Actual and hypothetical area payment independent of farming intensity; 0, 10, 20, 40, 60 £/ha	Interviews
SFP _L	Dummy variable for SFP, SFP _L = 1 if SFP < L, otherwise SFP _L = 0	Derived
SFP _M	Dummy variable for SFP, SFP _M = 1 if L < SFP < H, otherwise SFP _M = 0	Derived
SFP _H	Dummy variable for SFP, SFP _H = 1 if SFP > H, otherwise SFP _H = 0	Derived

Table 1 Data tested for the specification of the behavioural model.—cont'd

Variable	Description	Source
Temperature, Temp	Used as proxy for Elevation; to capture land carrying capacity	Met Office weather stations ^a
Grass	Proportion of gramionoids (grasses) in each MU	LCM
Heather	Proportion of dwarf shrub in each MA	LCM
D _H	Dummy variable for Heather dominant MA; D _H = 1 when Heather > 0.5, otherwise D _H = 0	Derived
Burning costs, BC	Costs of burning measured as labour requirement per unit of land	Interviews
Wintering costs, WC	Costs of keeping sheep off the moors over winter	Interviews

^a<http://www.badc.nerc.ac.uk/data/ukmo-midas>

4.2 Data used for the habitat succession model

Spatially-referenced environmental data used in the habitat succession model is specified in Table 2 and model formulation is outlined in the following section.



5. Model formulation and parameterisation

The model consists of two integrated components, the behavioural model and the habitat succession model. In this section, both components are described individually and then their integration and joint simulation is outlined.

5.1 Behavioural model

The underlying premise of the models we set up is that land managers choose a land management regime to maximise the utility from the joint production of grouse and sheep.

We use a random utility approach (Train, 2003) to model land managers choices between alternative management regimes. This assumes that a land manager chooses a management regime j (defined as a combination of management attributes) in an area from the set of possible regimes J with the highest expected utility from the chosen management regime. A general representative utility function of management regime j chosen by land

Table 2 Data used to run the habitat succession model.

Variables	Description	Source
LCM	Land Cover Map in 2005 grouped into dwarf shrubs, bracken, graminoid, bare peat and bare rock, 5 × 5 m resolution	Chapman et al. (2010)
Slope	Mean slope (degrees) derived from the NEXTmap Digital Elevation Model (5 × 5 m resolution)	NEXTmap ^a
Aspect	Aspect (north, south, east, west) derived from the NEXTmap Digital Elevation Model (5 × 5 m resolution)	NEXTmap ^a
Rainfall	Mean annual rainfall, interpolated at 100 × 100 m resolution	Met Office weather stations ^b
Temperature	Mean annual temperature, interpolated at 100 × 100 m resolution	Met Office weather stations ^b
Bedrock	Bedrock classified as either sandstone or mixed	British Geological Survey bedrock map ^c
Warming	Additional degrees Celsius added to the mean annual temperature	Scenario assumption

^a<http://www.neodc.rl.ac.uk>;^b<http://www.badc.nerc.ac.uk/data/ukmo-midas>;^c<http://www.bgs.ac.uk/products/digitalmaps/home/html>

manager n is specified as v_{nj} . The utility function includes (1) regime characteristics, x_{nj} , (2) environmental characteristics, z_n , independent of the land management choices and (3) policy environment conditions, s_n , that are also independent of the choices the land manager makes. The expected utility that individual n gains from land management regime j is, therefore, comprised of a deterministic component (v_{nj}) and a random error component (ε_{nj}) specified as:

$$U_{nj} = v_{nj} + \varepsilon_{nj} \quad (1)$$

where $v_{nj} = \beta_1' \mathbf{x}_{nj} + \beta_2' \mathbf{x}_{nj} z_n + \beta_3' \mathbf{x}_{nj} s_n$. β_1 is a preference parameter vector representing the importance of individual regime characteristics in land managers choices (i.e. parameters measuring preference for stocking density and heather diversity), β_2 is the preference parameter vector accounting for variation across varying environmental conditions, and β_3 accounts for the variation in preference parameters with varying policy environments.

The error component ε_{nj} is independently and identically distributed (iid) and follows a Type 1 extreme value distribution (Train, 2003).

The probability that individual n chooses regime i can be derived given the parameter vectors $\beta_1, \beta_2, \beta_3$ using the multinomial logit model (MNL) specified as follows:

$$\text{Pr}_{ni} = \frac{\exp(v_{ni})}{\sum_{j \in J} \exp(v_{nj})} \quad (2)$$

The parameters are derived using maximum likelihood estimation using the Gauss software, version 6.0. There is no information on the subset of land management regimes considered by the land manager on each plot of land. However, all alternatives are available to the land managers and the choice set is modelled as the chosen regime and a random selection of alternatives. The advantage of this approach is the reduction in computing effort. More importantly, this approach has been shown to generate very similar relative parameter estimates to those obtained when the estimation choice set is the same as the total potential choice sets (Parsons and Kealy, 1992; Termansen et al., 2004). We test for parameter stability with increasing size of the choice set to ensure that the selected model specification is not dependent on the arbitrary choice of number of alternative regimes considered.

5.2 Habitat dynamics model

The habitat model is a spatially explicit grid based model of the dynamics of the moorland vegetation cover. Space is represented as a 100×100 m grid aligned to the Ordnance Survey British National Grid. The state of each grid cell is given by the cover of dwarf shrubs (predominantly heather *Calluna vulgaris*), bracken *Pteridium aquilinum*, graminoids (grasses, sedges and rushes) and bare peat. Dwarf shrubs are further divided into five growth phases based on the number of years since the last burn. The phases are newly burnt (0–2 years), pioneer (3–5 years), building (6–15 years), mature (16–25 years) and degenerate (26+ years) (Barclay-Estrup and Gimingham, 1969). It is assumed that dwarf shrubs will remain in the degenerate stage indefinitely if it is not burned, and that cells colonised by dwarf shrubs enter the pioneer stage. Aging and the choice of burning regime determine the diversity of the dwarf shrub habitat, represented in the model by the Shannon–Weaver diversity index (Shannon, 1948).

The habitat dynamics is based on the model developed by [Chapman et al. \(2009\)](#). Changes in habitat cover are determined by competition between dwarf shrubs, bracken and graminoids. This is mediated by grazing pressure, dwarf shrub age distribution (determined by burning) and environmental gradients. We follow the work from [Palmer et al. \(2004\)](#) and assume that provided grazing pressure is sufficiently low, and the environment sufficiently suitable, dwarf shrubs will dominate graminoids and bracken, and will increase in cover. We, however, modify Palmer et al.'s model for changes in dwarf shrub cover as a function of the proportion of annual productivity eaten by grazing sheep (the utilisation rate). Modifications include accounting for variations in habitat quality, the composition of competing vegetation and the dwarf growth phase following the principles described in [Chapman et al. \(2009\)](#). Habitat quality is determined by temperature, rainfall, topography and bedrock type. For a full specification of the vegetation dynamics refer to [Chapman et al. \(2009\)](#).

Managers decide how many sheep to release onto each management unit during summer and winter, but these sheep are free to move through the unit and so stocking density is therefore not uniformly distributed. We assume that sheep are distributed across the cells in proportion to the cover of their preferred forage (graminoids, including those growing within other vegetation types, following [Armstrong et al., 1997a,b](#)). Once stock density through the year has been calculated, the grazing utilisation rate of dwarf shrubs is estimated using the Hill Grazing Management Model (HGMM; [Armstrong et al., 1997a,b](#)). The HGMM is a very complex model from which we are only interested in determining of sheep grazing pressure. We have, therefore, produced a HGMM-emulator by running the model for selected variations in inputs (summer and winter stocking densities, proportions of dwarf shrub in each growth phase and temperature) and modelled the resulting grazing pressure using multiple regression. [Chapman et al. \(2010\)](#) give full detail of this procedure and the results obtained.

Managed burning in each management unit is implemented in each year with a probability calculated as the inverse of the burning frequency given in the land management strategy. Burning affects entire grid cells, and we assume that cells are eligible for burning if the area of dwarf shrubs exceeds a threshold of 0.3 ha, equivalent to the average size of a burning plot. The land management strategy gives the proportion of the eligible cells that are burnt each time burning occurs. These are selected as the oldest of the eligible cells. We assume that the burn is controlled and at a low temperature so

that it simply resets the age of the dwarf shrub to zero. Negative impacts on dwarf shrub regeneration of high temperature burns have not been included in the model.

5.3 Simulation procedure

Management decisions are made in each year with a probability of 0.2, i.e., every 5 years on average. Decisions are made by selecting a strategy from the observed set with a probability in proportion to the values of $\exp(v_{mj})$ (Eq. 2) for all observed strategies, as determined by the choice model.

Stocking densities are distributed in each land management unit according to habitat preference of sheep and the chosen burning events are simulated by updating the state of the burned patches.

Models are initiated with the observed management strategies and vegetation cover and run to equilibrium over a 500 year transient. Outputs are then collected over the next 500 years and include the frequencies with which each management unit chooses each observed strategy. These data are used to calculate the mean values of the management strategies, such as the stocking densities, and the proportion cover of each vegetation type across the simulated landscapes.

5.4 Analysis of simulated data

Ten replicate simulations are run to establish equilibrium conditions for each combination of single farm payment level and degree of climate change. Climate change is modelled as a uniform increase in temperature by 0 to 3 °C (in 0.5 °C steps). Generalised linear models are used to analyse the components of the mean strategies outputted for each combination.



6. Results

6.1 Behavioural model specification

The selected model shows that farmers' utility from land management is dependent on stocking density, heather diversity, elevation, costs associated with sheep farming and burning and subsidy received (Table 3). The analysis did not show any evidence of dependence of the tested socio-economic characteristics of the land manager. We define low SFP as payment below £20/ha and high SFP as payments above £60 ha⁻¹, as these specifications had the best statistical fit to the observed data.

Table 3 Behavioural model specification (Choice set 100 alternative land management regimes).

Variable	Parameter	Estimate	t-statistics
Stocking Density	β_1^1	-3.828	-2.86
Stocking Density \times SFP _L	β_3^1	-0.531	-3.01
Shannon Diversity Index \times Heather \cdot D _H	β_2^1	4.266	4.62
Shannon Diversity Index \times SFP _H	β_3^2	0.959	2.60
Burning Costs	β_1^2	-0.019	-3.82
Wintering Costs	β_1^3	-0.015	-1.27
Stocking Density \times Temperature	β_2^2	0.5356	3.05

Heather dominated land is defined as dwarf shrub occupying >50% of the management unit. This threshold was also estimated based on statistical fit.

The probability of choosing a land management regime with a high stocking density increases with temperature reflecting the higher stocking densities in the valleys compared to the hilltops ($\beta_2^2 > 0$, $P < 0.05$). This effect is augmented by a background level propensity to choose management regimes with low sheep stocking densities ($\beta_1^1 < 0$, $P < 0.05$). It would be expected that land managers would attempt to avoid land management options that lead to high costs associated with wintering costs; however, we do not find this effect to be significant. For scenarios representing a reduction in the SFP, the probability of choosing management regimes with high stocking densities is reduced ($\beta_3^1 < 0$, $P < 0.05$). Land managers display a preference for land management regimes with higher dwarf shrub diversity on dwarf shrub dominated land ($\beta_2^1 > 0$, $P < 0.05$). High burning costs regimes are avoided, other aspect being equal ($\beta_1^2 < 0$, $P < 0.05$). For high SFP scenarios the probability of choosing management regimes generating high dwarf diversity increases ($\beta_3^2 > 0$, $P < 0.05$).

Relative parameter stability to choice set specification shows that this aspect of model estimation has little bearing on the final formulation (Fig. 2). We illustrate this for two sets of relative parameters: (i) the parameter capturing the preference for heather diversity on heather dominated land (β_2^1) relative to the parameter capturing the farmers' propensity to avoid burning costs (β_1^2); (ii) the parameter capturing the change in preference for stocking density under a reduction in the single farm payment to less than £20/ha (β_3^1) relative to the parameter capturing the disutility from occurring away wintering costs (β_1^3).

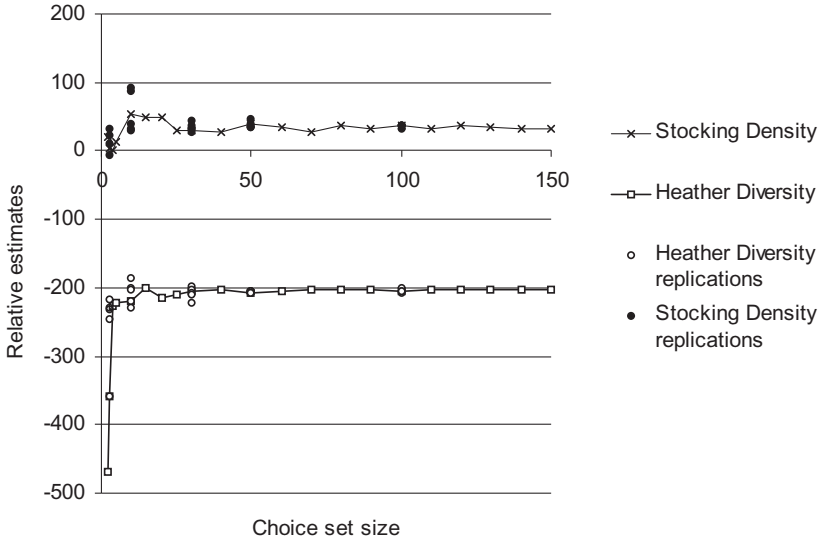


Fig. 2 Relative parameter estimates in choice model related to stocking density β_3/β_1^3 and related to heather density β_2/β_1^2 as a function of choice set size. Replication of estimations shown for choice set size 3, 10, 30, 50, 100, five replications for each choice set size.

The analysis shows that when the size of the choice set is below approximately 50 the relative parameter values are not stable, but results seem to be unaffected by the size of the choice set for larger choice sets. The results reported (Table 3) and used for further analysis are the results for a model estimated with 100 alternatives.



7. Predicted impact on stocking densities

The generalised linear model fitted to simulated summer stocking densities ($R_{\text{adj}}^2 = 0.816$) showed significant effects of the size of the area of the management unit ($t = 2.008$, $P = 0.045$), current mean temperature ($t = 72.30$, $P < 0.001$), degree of warming ($t = 218.0$, $P < 0.001$) and single farm payment ($P < 0.001$ for both factor levels) (Table 4). Farmers apply on average a higher summer stocking density to larger management units with higher temperatures (i.e. areas at lower elevation or with more severe climate change). Low levels of single farm payment are predicted to lead to a decrease in stocking density compared to the current levels (Fig. 3A). High levels of the payment is also predicted to lead to reduced stocking densities

Table 4 Determinants of summer and winter stocking densities in land management units. Summer stocking density model, $R_{\text{adj}}^2 = 0.8161$, $P < 0.001$. Winter stocking density model, $R_{\text{adj}}^2 = 0.5161$, $P < 0.001$.

Variable	Summer stocking densities		Winter stocking densities	
	Estimates	t-statistics	Estimates	t-statistics
Intercept	-1.862	-44.396	0.183	17.192
SFP _M	0.439	79.922	0.0573	40.985
SFP _H	0.324	58.961	0.0627	44.837
Warming	0.489	217.958	0.0584	102.301
MU area	8.164×10^{-6}	2.008	-8.132×10^{-7}	-0.787
Temperature	0.398	72.303	0.0518	37.018

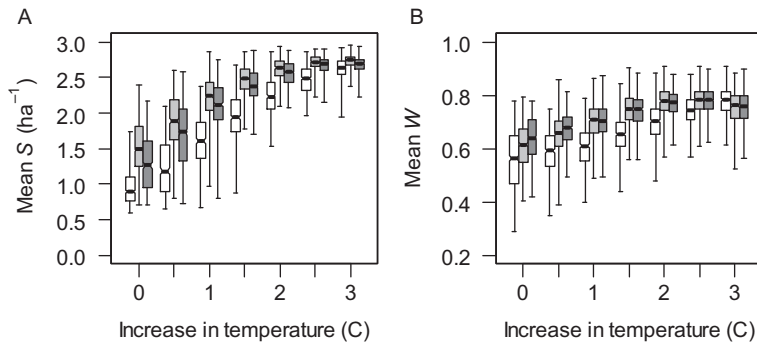


Fig. 3 Responses of grazing strategies to joint variation in the single farm payment (SFP) and climate change. Boxplots show equilibrium (A) summer sheep densities S (ha^{-1}) and (B) winter stocking rates W (white, $\text{SFP} < \text{£}20 \text{ ha}^{-1}$; light grey, $\text{£}20 < \text{SFP} < \text{£}60 \text{ ha}^{-1}$; dark grey, $\text{SFP} > \text{£}60 \text{ ha}^{-1}$). Boxplots show medians (thick lines), interquartile ranges (IQRs, boxes), ranges (whiskers) and $\pm 1.58 \text{ IQR}/\sqrt{n}$ (notches) where n = number of datapoints of values for the mean values of individual management units. If two notches do not overlap, this indicates that the medians are significantly different at $P < 0.05$. Mean values for each management unit are calculated from the strategies chosen during 500 simulated years, following an initial 500-year transient period. Values from 10-replicate simulations are used in the plots.

compared to the current payment levels ($P < 0.001$); however, this effect is only apparent when analysing the individual management unit data. The landscape mean over the 10 simulations is not different to the mean outcome under the current payments (Fig. 3A). The simulations suggest that increasing temperature under climate change outweighs the differences resulting

from changes in the single farm payment. However, as the management regimes do not include options above a stocking density of 3 sheep/ha, this prediction could be a result of this selection of choice set design (Fig. 3A). Similar results hold for variation in the winter stocking densities; however, the effect of the size of management area is not significant ($t = -0.787$, $P = 0.432$). Furthermore, the mean effect from the 10 simulations of different levels of the single farm payment also suggests that only the low payment levels generate a significantly lower winter stocking density for some warming scenarios (Fig. 3B).



8. Predicted impact on burning activities

Simulated proportions of time employing grouse moor management (strategies involving some burning) were analysed using a GLM with binomial error structure corrected for overdispersion ($R_{\text{adj}}^2 = 0.405$) (Table 5). Under the current climate, managers mostly express a clear preference for either grouse moor management or sheep production (Fig. 4A–C). However, a reduced preference for grouse is seen at medium levels of SFP ($t = -31.65$, $P < 0.001$) and for large management units ($t = -4.083$, $P < 0.001$) at currently high temperatures/low elevations ($t = -23.41$, $P < 0.001$). As the climate gets warmer, the preference grouse management also declines ($t = -86.63$, $P < 0.001$) and we see a shift away from managed burning towards grazing (Fig. 4A–C). However, there is only a small impact on the burning practices of management units that still engage in burning (Fig. 4D).

Table 5 Binomial linear model of participation in managed burning. $R_{\text{adj}}^2 = 0.405$. Correction for over dispersion, $k = 78.68075$.

Variable	Estimates	t-statistics
Intercept	4.742	21.780
SFP _M	-0.973	-31.619
SFP _H	0.0606	2.357
Warming	-1.323	-86.538
MU area	-8.787×10^{-5}	-4.080
Temperature	-0.672	-23.396

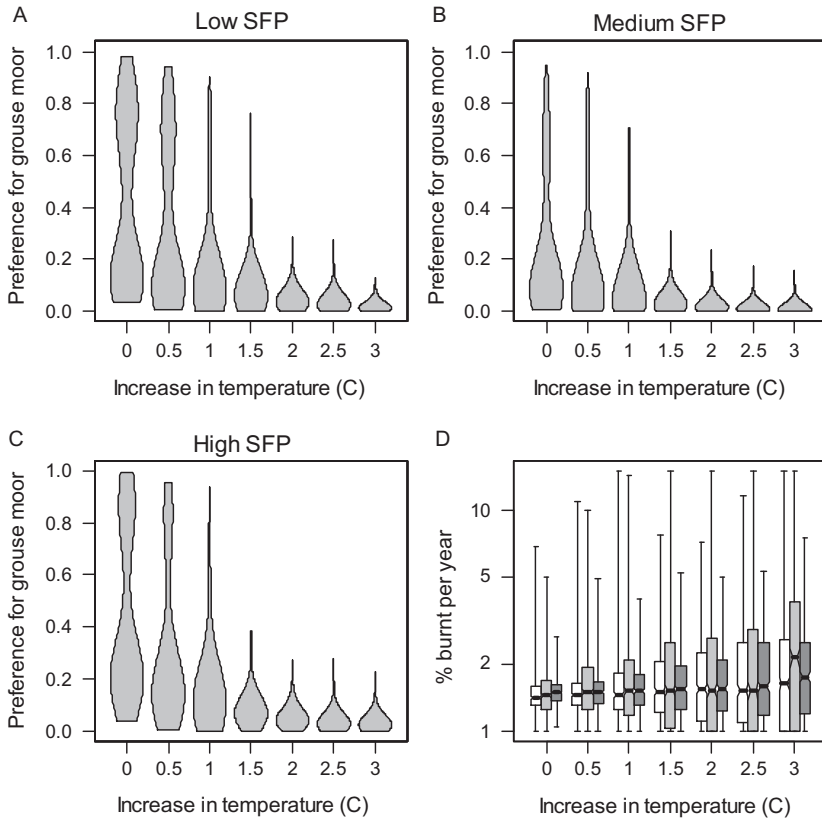


Fig. 4 (A–C) Violin plots showing the kernel density (indicated by width) of preference for grouse moor management for different temperature rises and levels of the single farm payment (SFP). Preference is measured as the proportion of years in which management units employ a strategy involving burning. (D) Boxplot of the mean percentage of the dwarf shrub burnt each year when management units employ strategies including burning, for variations in the single farm payment and climate change (all as in Fig. 3).



9. Predicted impact on land cover

The results on vegetation cover reflect both the natural habitat dynamics and the management responses. At current temperatures the proportions of dwarf shrub are inversely related to the summer grazing pressure determined by the SFP level, while the opposite is true for graminoids and bare peat, both of which are favoured by higher grazing (Fig. 5A–C). Bracken is not eaten by sheep so is relatively unaffected by grazing

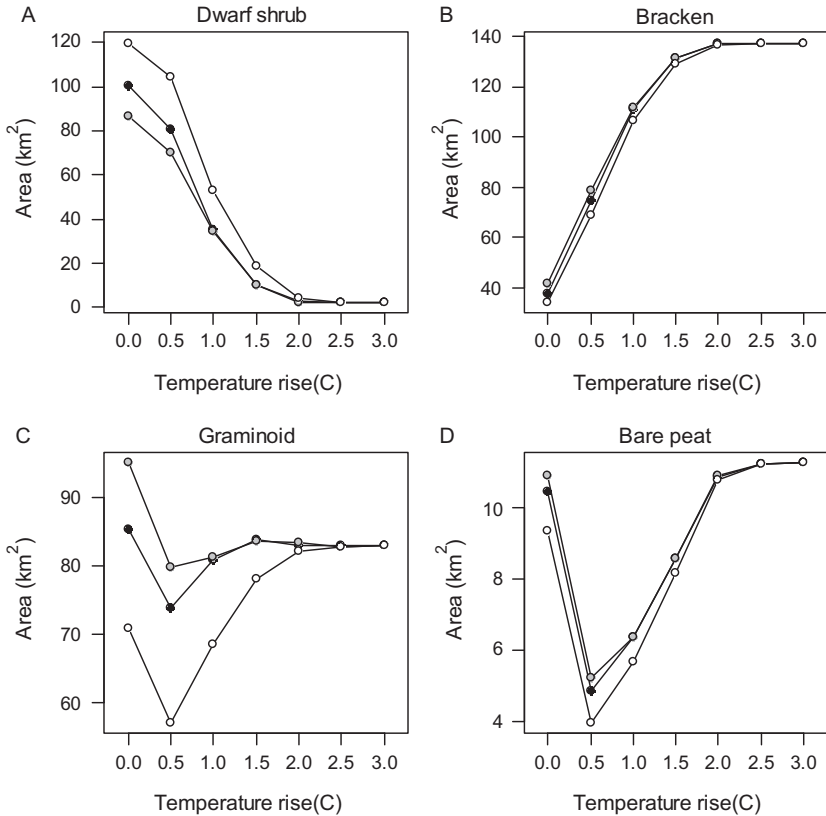


Fig. 5 Mean equilibrium areas of (A) dwarf shrub, (B) bracken, (C) graminoids and (D) bare peat for differing temperature rise and single farm payments (white=low, grey=medium, black=high). Means are values from 10-replicate simulations after 1000 years.

(Fig. 5D). However its habitat quality is strongly constrained by a need for high temperature and so warmer temperatures allow it to move up the hill and increase in cover. Dwarf shrub quality peaks at moderate temperatures, so in theory warming should increase cover in the coldest sites but decrease it in the warmest. However, warmer temperatures also bring higher grazing pressure in the model, which offsets any gains in cover in the colder sites. Graminoids and bare peat both favour colder temperatures, so a slight warming reduces their cover. However, as the temperature increases further and dwarf shrubs are lost to overgrazing then graminoids and bare peat expand in cover. At warmer temperatures, management converges away from burning for grouse moor and towards sheep production and so the responses of vegetation to variation in the SFP become smaller (Fig. 5).



10. Discussion and conclusion

Much work has been devoted to anticipate the affects of alternative reforms of the European agricultural policy schemes. Previous modelling studies from the UK uplands have shown a general trend towards extensification in the uplands as a result of decoupling production and subsidy payments with the introduction of the single farm payment (Matthews et al., 2006; Oglethorpe, 2005; Szvetlana et al., 2008). Extensification includes a reduction in sheep and cattle densities and also a reduction in the average per hectare use of inorganic fertilisers, the movement to lower stocking densities and shifts away from traditional suckler beef systems to sheep systems. The substitution of cattle systems with sheep is thought to be due to the lower fixed costs (i.e. operations and contractor costs) associated with sheep systems (Matthews et al., 2006). The results of this study suggest that even when subsidy payments are decoupled from agricultural production, the level of payments is likely to impact the priorities in land management, although this should not be the case if farmers were strictly profit maximising agents. Our analysis suggests that there are two competing explanations for the nature of the impact on land management of changes to the level of the single farm payments. These two competing explanations could broadly be defined as the payment scheme's impact on: (i) the propensity to diversify to make up for lost earnings, and (ii) the economic capacity of land owners to maintain a given level of land management activity. Our analysis shows that a reduction in the single farm payment leads to a reduction in stocking density and an increase in burning activities. This result can be interpreted by combining the insights from the behavioural model and the vegetation dynamics model. The reduction in the single farm payment reduces the stocking density. This mainly results from the proportion of farmers giving up sheep production under this scenario. In turn, the reduced sheep density promotes dwarf shrub regeneration, and this leads to an increase in the utility from choosing a grouse production management strategy. Overall, the results suggest that reducing the single farm payment introduces a shift in land management priorities to a regime less dominated by sheep grazing and more dominated by grouse shooting. As the single farm payment is independent of the amount of production, this suggests that current management practices are not financially viable but maintained through the subsidy. An increase in the single farm payment also results in a shift away

from sheep grazing towards grouse moor management. This suggests that under more favourable financial circumstances, expensive but valued management regimes become relatively more attractive and land managers chose to invest more in the generation of habitats for grouse production. Again this suggest that land managers in the upland are motivated not purely by financial objectives but still are impacted by the financial constraints under which they carry out their business operations. Taken together, these results suggest that “other factors” rather than just profit contribute to farmers’ utility, and therefore also important in determining land management decisions.

In terms of understanding these other factors, there are at least two key fields that provide conceptual and empirical insights. The first comes from behavioural studies, considering in particular, why some farmers voluntarily sign up to some policies and not others (Aslam et al., 2017; Brotherton, 1991, 1989; Potter and Gasson, 1988; Wilson, 1997; Zandersen et al., 2016). The second field is based in rural sociology and seeks to account for the persistence of “middle-range” family farms that are too big to be a “hobby” farm but too small to be economically viable on their own. In this case, family structure and employment mobility are seen as important factors that drive the decision to stay in farming (Munton and Marsden, 1991). In our study, we have not been able to quantify socio-economic characteristics favouring particular types of behaviours. However, the more qualitative studies from this study area do give evidence of different land management groupings impacting on land management choices (Dougill et al., 2006). External industry factors, along the supply and demand chain, may also be important factors of land management behaviour, e.g., work in Canada has showed that structural factors such as the nature of the food processing industry (Fraser, 2006) and land tenure (Fraser, 2004) all have significant influences on the types of crops a farmer plants and the extent to which they engage in soil conservation practices.

This study has also investigated the extent to which the interaction between the decision-making in various habitats and the vegetation dynamics is sensitive to climate change. The model predicts significant changes to both land management behaviour and vegetation cover. The system is predicted to shift towards a grazing-based system, where stocking densities increase, dwarf cover declines resulting in a reduction in burning activities. It should however be noted, that in the vegetation models, temperature increases that pushed individual cells above the observed maximum temperature were treated as having the same effect as raising temperature

to the observed maximum. This was because nonlinear relationships fitted to local data could not be extrapolated to higher temperatures. This means that bracken may in reality continue to increase in dominance at high temperatures rather than reach an asymptote. Furthermore, the temperature dependency in the behavioural model is represented by a linear relationship, this may have resulted in unrealistic predictions of climate effects for lower elevation areas. Management decisions converge at high temperatures but this could be due to the fact that high stocking density options are not present in the choice set. This means that the increase in stocking densities might be even more severe than the simulated results indicate.

The approach illustrated in this paper could potentially be improved to include more elaborated decision models given replications of the types of data we use here to a larger sample size. The relatively recent developments in discrete choice modelling to capture heterogeneity in preferences between individuals or groups of individuals, by application of the mixed logit model (Train, 2003) or the latent class models (Boxall and Adamowicz, 2002), offer interesting extensions of the approach we have proposed here. Furthermore, new developments in choice modelling over the last decade could potentially be used to model complex decision-making processes. This could potentially be achieved using hybrid choice models (Ben-Akiva et al., 2002; Hess and Beharry-Borg, 2012).

The present paper has however made a contribution to the way in which discrete choice models of land use behaviour can be considered in an integrated model. Our approach allows the simulation of choices in response to the environmental consequences of past actions, a factor usually ignored in studies using choice modelling. Furthermore, the behavioural rules are revealed through empirical data rather than dictated through expert opinions, derived from the literature or simply assumed. This allows the research to test the statistical significance of various determinants of choice. Moreover, the behavioural choice model generates probabilities of alternative behaviours that makes it ideally suited for integration with simulation models.

Acknowledgements

The paper has been funded through the Rural Economy and Land Use (RELU) programme, co-sponsored by Defra and SEERAD (project RES-224-25-0088). The authors would like to thank the farmers, landowners and gamekeepers of the Peak District National Park who gave their time to take part in the questionnaires. Furthermore, the paper has benefited from support from the PREAR project (No 652615) granted under the FACCE SURPLUS ERA-NET Cofund.

References

- Agarwal, C., Green, G.M., Grove, J.M., Evans, T.P., Schweik, C.M., 2002. A Review and Assessment of Land-Use Change Models: Dynamics of Space, Time and Human Choice. US Department of Agriculture, Forest Service Northeastern Research Station, Newton Square, PA.
- An, L., 2012. Modeling human decisions in coupled human and natural systems: review of agent-based models. *Ecol. Model.* 229, 25–36.
- Armstrong, H.M., Gordon, I.J., Grant, S.A., Hutchings, N.J., Milne, J.A., Sibbald, A.R., 1997a. A model of the grazing of hill vegetation by the sheep in the UK. I. The prediction of vegetation biomass. *J. Appl. Ecol.* 34, 166–185.
- Armstrong, H.M., Gordon, I.J., Hutchings, N.J., Illuis, A.W., Milne, J.A., Sibbald, A.R., 1997b. A model of the grazing of hill vegetation by sheep in the UK. II. The prediction of offtake by sheep. *J. Appl. Ecol.* 34, 186–207.
- Aslam, U., Termansen, M., Fleskens, L., 2017. Investigating farmers' preferences for alternative PES schemes to promote carbon sequestration in UK agroecosystems. *Ecosyst. Serv.* 27 (A), 103–112.
- Bailey, K.D., 1982. *Methods of Social Research*. Free Press, New York.
- Balmann, A., 1997. Farm-based modelling of regional structural change. *Eur. Rev. Agric. Econ.* 25 (1), 85–108.
- Baltas, N.C., Korka, O., 2002. Modelling farmers' land use decisions. *Appl. Econ. Lett.* 9, 453–457.
- Barclay-Estrup, P., Gimingham, C.H., 1969. Description and interpretation of cyclical processes in a heath community. I. Vegetational change in relation to the *Calluna* cycle. *J. Ecol.* 57, 737–758.
- Barreteau, O., Bousquet, F., 2000. SHADOC: a multi-agent model to tackle viability of irrigated systems. *Ann. Oper. Res.* 94, 139–162.
- Ben-Akiva, M., McFadden, D., Train, K., Walker, J., Bhat, C., Bierlaire, M., Bolduc, D., Boersch-Supan, A., Brownstone, D., Bunch, D.S., Daly, A., De Palma, A., Gopinath, D., Karlstrom, A., Munizaga, M.A., 2002. Hybrid choice models: progress and challenges. *Mark. Lett.* 13 (3), 163–175.
- Berger, T., 2001. Agent-based spatial models applied to agriculture: a simulation tool for technology diffusion. Resource use changes and policy analysis. *Agric. Econ.* 25 (2–3), 245–260.
- Bousquet, F., Bakam, I., Proton, H., Le Page, C., 1998. Cormas: commonpool resources and multi agent systems. In: *Lecture Notes in Artificial Intelligence*. 1416, Springer, pp. 826–837.
- Boxall, P., Adamowicz, W., 2002. Understanding heterogeneous preferences in random utility models: a latent class approach. *Environ. Resour. Econ.* 23, 421–446.
- Brock, W.A., Durlauf, S.N., 2006. Multinomial choice with social interactions. In: Blume, L.E., Durlauf, S.N. (Eds.), *The Economy as an Evolving Complex System, III. Current Perspectives and Future Directions*. Santa fee Institute Studies in the Sciences of Complexity, pp. 175–206.
- Brotherton, I., 1989. Farmer participation in voluntary land diversion schemes: some observations from theory. *J. Rural. Stud.* 5, 299–304.
- Brotherton, I., 1991. What limits participation in ESAs? *J. Environ. Manag.* 32, 241–249.
- Chapman, D., Termansen, M., Quinn, C.H., Jin, N., Bonn, A., Cornell, S., Fraser, E.D.G., Hubacek, K., Kunin, W., Reed, M., 2009. Modelling the coupled dynamics of moorland management and vegetation in the UK uplands. *J. Appl. Ecol.* 46, 278–288.
- Chapman, S.S., Bonn, A., Kunin, W.E., Cornell, S.J., 2010. Random forest characterization of upland vegetation and management burning from aerial imagery. *J. Biogeogr.* 37, 37–46.

- COM, 2017. The Future of Food and Farming. COM, Brussels. 29.11.2017. (2017) 713 final.
- Conrad, S.A., Yates, D., 2018. Coupling stated preferences with a hydrological water resource model to inform water policies for residential areas in the Okanagan Basin, Canada. *J. Hydrol.* 564, 846–858.
- Cooper, J.C., Keim, R.W., 1996. Incentive payments to encourage farmer adoption of water quality protection practices. *Am. J. Agric. Econ.* 78 (1), 54–64.
- Dia, H., 2001. An agent-based approach to modelling driver route choice behaviour under the influence of real-time information. *Transp. Res. C* 10, 331–349.
- Dougill, A.J., Fraser, E.D.G., Holden, J., Hubacek, K., Prell, C., Reed, M.S., Stagl, S., Stringer, L.C., 2006. Learning from doing participatory rural research: lessons from the Peak District National Park. *J. Agric. Econ.* 57, 259–275.
- Drechsler, M., Johst, K., Ohl, C., Wätzold, W., 2007. Designing cost-effective payments for conservation measures to generate spatiotemporal habitat heterogeneity. *Conserv. Biol.* 21, 1475–1486.
- English Nature, 2003. England's Best Wildlife and Geological Sites; The Condition of SSSIs in England in 2003. English Nature, Peterborough.
- Evans, T.P., Kelley, H., 2004. Multi-scale analysis of a household level agent-based model of land cover change. *J. Environ. Manag.* 72, 57–72.
- Fraser, E.D.G., 2004. Land tenure and agricultural management: soil conservation on rented and owned fields in southwest British Columbia. *Agric. Hum. Values* 21, 73–79.
- Fraser, E.D., 2006. Crop diversification and trade liberalization: linking global trade and local management through a regional case study. *Agric. Hum. Values* 23, 271–281.
- Hess, S., Beharry-Borg, N., 2012. Accounting for latent attitudes in willingness-to-pay studies: the case of coastal water quality improvements in Tobago. *Environ. Resour. Econ.* 52, 109–131.
- Huber, R., Bakker, M., Balmann, A., Berger, T., Bithell, M., Brown, C., Gret-Regamey, A., Xiong, H., Le, Q.B., Mack, G., Meyfroidt, P., Millington, J., Muller, B., Polhill, J.G., Sun, Z., Seidl, R., Troost, C., Finger, R., 2018. Representation of decision-making in European agricultural agent-based models. *Agric. Syst.* 167, 143–160.
- Huigen, M.G.A., 2004. First principles of the Mameluke multi-actor modelling framework for land use change, illustrated with a Philippine case study. *J. Environ. Manag.* 72, 5–21.
- Hunt, L.M., Kushneriuk, R., Lester, N., 2007. Linking agent-based and choice models to study outdoor recreation behaviours: a case of the landscape fisheries model in northern Ontario, Canada. *For. Snow Landsc. Res.* 81, 163–174.
- Lynch, L., Hardie, I., Parker, D., 2002. Analyzing Agricultural Landowners' Willingness to Install Streamside Buffers. Working Paper from, The Department of Agricultural and Resource Economics, The University of Maryland, College Park.
- Matthews, K.B., Wright, I.A., Buchan, K., Davies, D.A., Schwarz, G., 2006. Assessing the options for upland livestock systems under CAP reform: developing and applying a livestock systems model within whole-farm systems analysis. *Agric. Syst.* 90, 32–61.
- Milon, J.W., Scrogin, D., 2006. Latent preferences and valuation of wetland ecosystem restoration. *Ecol. Econ.* 56, 162–175.
- Munton, R., Marsden, T., 1991. Dualism or diversity in family farming? Patterns of occupancy change in British agriculture. *Geoforum* 22, 105–117.
- Naingolan, D., Hasler, B., Andersen, H.E., Gyldenkaerne, S., Termansen, M., 2018. Water quality management and climate change mitigation: cost-effectiveness of joint implementation in the Baltic Sea region. *Ecol. Econ.* 144, 12–26.
- Office for National Statistics, 2003. Census 2001: CD Supplement to the National Report for England and Wales and Key Statistics for Local Authorities in England and Wales. Office for National Statistics, London.

- Oglethorpe, D.R., 2005. Livestock production post CAP reform: implications for the environment. *Anim. Sci.* 81, 189–192.
- Palmer, S.C.F., Gordon, I.J., Hester, A.J., Pakeman, R.J., 2004. Introducing spatial grazing impacts into the prediction of moorland vegetation dynamics. *Landsc. Ecol.* 19, 817–827.
- Parsons, G.R., Kealy, M.J., 1992. Randomly drawn opportunity sets in a random utility model of lake recreation. *Land Econ.* 68, 93–106.
- Peak District National Park, 2004. State of the Park Report (Update). <http://www.peakdistrict.org>. Peak District National Park Authority.
- Peterson, J.M., Fox, J.A., Leatherman, J.C., Smith, C.M., 2007. Choice experiments to assess farmers' willingness to participate in a water quality trading market. In: Selected Paper Prepared for Presentation at the American Agricultural Economics Association Annual Meeting. Kansas State University, Portland, Oregon. July 29–August 1.
- Polhill, J.G., Gotts, N.M., Law, A.N.R., 2001. Imitative versus nonimitative strategies in a land-use simulation. *Cybern. Syst.* 32 (1), 285–307.
- Potter, C., Gasson, R., 1988. Farmer participation in voluntary land diversion schemes: some predictions from a survey. *J. Rural. Stud.* 4, 365–375.
- Prestele, R., Arneith, A., Bondeau, A., de Noblet-Ducoudré, N., Pugh, T.A.M., Sitch, S., Stehfest, E., Verburg, P.H., 2017. Current challenges of implementing anthropogenic land-use and land-cover change in models contributing to climate change assessments. *Earth Syst. Dynam.* 8, 369–386.
- Schreinemachers, P., Berger, T., 2011. An agent-based simulation model of human-environment interactions in agricultural systems. *Environ. Model. Softw.* 26 (7), 845–859.
- Shaikh, S.L., Sun, L., van Kooten, G.C., 2005. Are agricultural values a reliable guide in determining Landowners' decisions to create forest carbon sinks? *Can. J. Agric. Econ.* 55, 97–114.
- Shannon, C.E., 1948. A mathematical theory of communication. *Bell Syst. Tech. J.* 27, 379–423 and 623–656.
- Sustainable Uplands and Moors for the Future, 2007. Looking After Moorland Habitats. Sustainable Uplands Project. Research Note 14. School of Earth and Environment, University of Leeds, UK.
- Szvetlana, A., Hanley, N., Dallimer, M., Robertson, P., Gaston, K., Armsworth, P.R., 2008. Impacts of policy reform on sustainability of hill farming in U.K. by means of bio-economic modelling. In: Paper Prepared for Presentation at the 107th EAAE Seminar “Modelling of Agricultural and Rural Development Policies”. Sevilla, Spain.
- Takama, T., Preston, J., 2008. Forecasting the effects of road user charge by stochastic agent-based modelling. *Transp. Res. A* 42, 738–749.
- Termansen, M., McClean, C.J., Skov-Petersen, H., 2004. Recreational site choice modeling using high spatial resolution data. *Environ. Plan. A* 36, 1085–1099.
- Tieskens, K.F., Shaw, B.J., Haer, T., Schulp, C.J.E., Verburg, P.H., 2017. Cultural landscapes of the future: using agent-based modeling to discuss and develop the use and management of the cultural landscape of South West Devon. *Landsc. Ecol.* 32, 2113–2132.
- Train, K., 2003. *Discrete Choice Methods With Simulation*. Cambridge University Press.
- Train, K., 2009. *Discrete Choice Methods With Simulation*, Second ed. Cambridge University Press.
- Train, K., 2016. Mixed logit with a flexible mixing distribution. *J. Choice Model.* 19, 40–53.
- UK Biodiversity Steering Group, 1995. *The UK Steering Group Report—Volume II: Action Plans*. HMSO, London.
- Vanslebrouck, I., Huylenbroeck, G.V., Verbeke, W., 2002. Determinants of the willingness of Belgian farmers to participate in agri-environmental measures. *J. Agric. Econ.* 53 (3), 489–511.

- Vedel, S.E., Jacobsen, J.B., Thorsen, B.J., 2015. Contracts for afforestation and the role of monitoring for landowners' willingness to accept. *Forest Policy Econ.* 51, 29–37.
- Veldkamp, A., Verburg, P.H., 2004. Modelling land use change and environmental impact. *J. Environ. Manag.* 72, 1–3.
- Watson, A., Miller, G.R., 1976. *Grouse Management*. Game and Wildlife Conservation Trust, Hampshire: Fordingbridge.
- Wilson, G.A., 1997. Factors influencing farmer participation in the environmentally sensitive areas scheme. *J. Environ. Manag.* 50, 67–93.
- Wolff, S., Schrammeijer, E.A., Schulp, C.J.E., Verburg, P.H., 2018. Meeting global land restoration and protection targets: what would the world look like in 2050? *Glob. Environ. Chang.* 52, 259–272.
- Zandersen, M., Jørgensen, S.L., Nainggolan, D., Gyldenkærne, S., Winding, A., Greve, M.H., Termansen, M., 2016. Potential and economic efficiency of using reduced tillage to mitigate climate effects in Danish agriculture. *Ecol. Econ.* 123, 14–22.

Further reading

- Herriges, J.A., Phaneuf, D.J., 2002. Inducing patterns of correlation and substitution in repeated logit models of recreation demand. *Am. J. Agric. Econ.* 84, 1076–1090.
- Silvano, R.A.M., Silva, A.L., Ceron, M., Begossi, A., 2008. Contributions of ethnobiology to the conservation of tropical rivers and streams. *Aquat. Conserv. Mar. Freshwat. Ecosyst.* 18 (3), 241–260.
- Willock, J., Deary, I.J., Mcgregor, M.M., Sutherland, A., Edward-Jones, G., Morgan, O., Dent, B., Grieve, R., Gibson, G., Ausin, E., 1999. Farmers' attitudes, objectives, behaviors, and personality traits: the Edinburgh study of decision making on farms. *J. Vocat. Behav.* 54, 5–36.