

University of Groningen

## Identifying Genotype-by-Environment Interactions in the Metabolism of Germinating Arabidopsis Seeds Using Generalized Genetical Genomics

Joosen, Ronny Viktor Louis; Arends, Danny; Li, Yang; Willems, Leo A. J.; Keurentjes, Joost J. B.; Ligterink, Wilco; Jansen, Ritsert C.; Hilhorst, Henk W. M.

*Published in:*  
 Plant Physiology

*DOI:*  
[10.1104/pp.113.216176](https://doi.org/10.1104/pp.113.216176)

**IMPORTANT NOTE: You are advised to consult the publisher's version (publisher's PDF) if you wish to cite from it. Please check the document version below.**

*Document Version*  
 Publisher's PDF, also known as Version of record

*Publication date:*  
 2013

[Link to publication in University of Groningen/UMCG research database](#)

### *Citation for published version (APA):*

Joosen, R. V. L., Arends, D., Li, Y., Willems, L. A. J., Keurentjes, J. J. B., Ligterink, W., Jansen, R. C., & Hilhorst, H. W. M. (2013). Identifying Genotype-by-Environment Interactions in the Metabolism of Germinating Arabidopsis Seeds Using Generalized Genetical Genomics. *Plant Physiology*, 162(2), 553-566. <https://doi.org/10.1104/pp.113.216176>

### **Copyright**

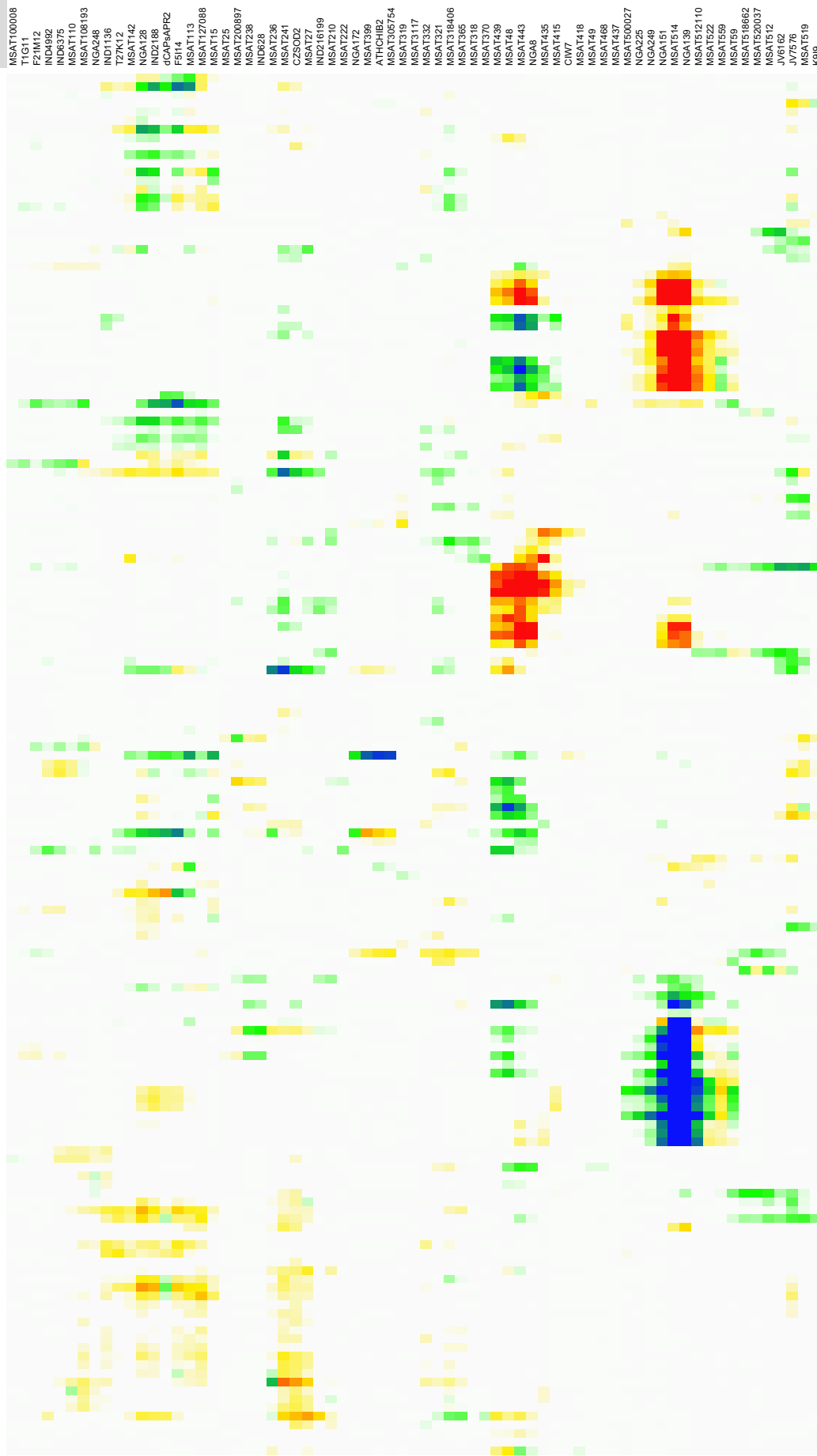
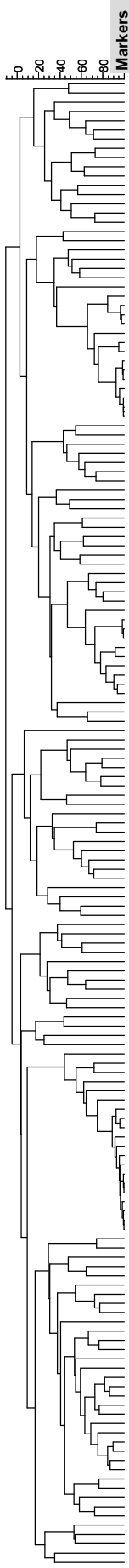
Other than for strictly personal use, it is not permitted to download or to forward/distribute the text or part of it without the consent of the author(s) and/or copyright holder(s), unless the work is under an open content license (like Creative Commons).

The publication may also be distributed here under the terms of Article 25fa of the Dutch Copyright Act, indicated by the "Taverne" license. More information can be found on the University of Groningen website: <https://www.rug.nl/library/open-access/self-archiving-pure/taverne-amendment>.

### **Take-down policy**

If you believe that this document breaches copyright please contact us providing details, and we will remove access to the work immediately and investigate your claim.

Downloaded from the University of Groningen/UMCG research database (Pure): <http://www.rug.nl/research/portal>. For technical reasons the number of authors shown on this cover page is limited to 10 maximum.



**Metabolites**

- Monomethylphosphate
- RI\_1746
- L-Lysine
- RI\_1483
- RI\_1082
- RI\_1033
- L-Isoleucine
- RI\_972
- L-Aspartic acid
- Alanine
- RI\_1182
- D-Glutamic acid
- L-Phenylalanine
- RI\_1688
- L-Serine
- L-Threonine
- RI\_1161
- Oxoglutaric acid
- RI\_2175
- Glycolic acid
- Glutaric acid
- Sucrose
- Nitrolic acid
- Galactosylglycerol
- RI\_3201
- RI\_1783
- RI\_2887
- RI\_2819
- Gamma-Aminobutyric acid
- RI\_2905
- RI\_2983
- RI\_1435
- RI\_2793
- RI\_2881
- D-Maltose
- RI\_1215
- RI\_1628
- RI\_1084
- Malic acid
- Galactinol
- Methylamine
- RI\_3078
- RI\_1762
- Raffinose
- RI\_1624
- Succinic acid
- Fumaric acid
- RI\_978
- RI\_982
- Urea
- RI\_2545
- Pyruvic acid
- 2-Hydroxybutyric acid
- D-Mannose
- D-Gluconic acid
- RI\_1831
- Gluconic acid
- RI\_3105
- RI\_2414
- Glucose 6-phosphate
- RI\_2395
- RI\_1625
- RI\_2455
- RI\_1185
- RI\_2353
- RI\_2817
- RI\_3203
- RI\_3145
- Sinapic acid
- RI\_2940
- RI\_1158
- RI\_2048
- RI\_2316
- RI\_2184
- RI\_2446
- RI\_1616
- RI\_2574
- RI\_1977
- RI\_2512
- Hexanoate
- 3,6-Anhydroglucose
- L-Xylofuranose
- RI\_1271
- Hydroxylamine
- RI\_1705
- RI\_1276
- RI\_2166
- Alanine
- Citric acid
- RI\_1798
- Sorbic acid
- RI\_1553
- Valeric acid
- RI\_956
- RI\_1972
- RI\_2964
- RI\_1291
- RI\_1605
- N-Acetylglutamic acid
- RI\_1180
- RI\_3027
- Fructose 6-phosphate
- RI\_2813
- RI\_1152
- Ethanolamine
- Benzoic acid
- L-Tyrosine
- RI\_2384
- RI\_3083
- RI\_1815
- RI\_2878
- RI\_2828
- RI\_1040
- RI\_1047
- RI\_2506
- RI\_2898
- RI\_1674
- RI\_3066
- Unknown sucrose like
- RI\_3315
- RI\_3455
- RI\_1644
- RI\_1944
- RI\_1555
- RI\_2037
- Glycoeryanose
- RI\_1960
- RI\_1590
- Ascorbic acid
- RI\_2062
- RI\_2968
- Phosphoric acid
- Glyceric acid
- Theuric acid
- RI\_2875
- RI\_1707
- L-Glutamine
- RI\_2970
- RI\_1578
- Pyroglutamic acid
- L-Proline
- L-Valine
- Glycine
- RI\_1078
- L-Methionine
- D-Glucose
- Furresic acid
- RI\_993
- D-Xylose
- Hydroxyproline
- L-Arabinose
- RI\_1632
- Mjonoitol
- RI\_1800
- RI\_1785
- D-Fructose
- RI\_1539
- RI\_1595
- L-Asparagine
- RI\_1329
- RI\_2010