

University of Groningen

Mapping of Gene Expression Reveals CYP27A1 as a Susceptibility Gene for Sporadic ALS

Diekstra, Frank P.; Saris, Christiaan G. J.; van Rheenen, Wouter; Franke, Lude; Jansen, Ritsert C.; van Es, Michael A.; van Vught, Paul W. J.; Blauw, Hylke M.; Groen, Ewout J. N.; Horvath, Steve

Published in:
 PLoS ONE

DOI:
[10.1371/journal.pone.0035333](https://doi.org/10.1371/journal.pone.0035333)

IMPORTANT NOTE: You are advised to consult the publisher's version (publisher's PDF) if you wish to cite from it. Please check the document version below.

Document Version
 Publisher's PDF, also known as Version of record

Publication date:
 2012

[Link to publication in University of Groningen/UMCG research database](#)

Citation for published version (APA):

Diekstra, F. P., Saris, C. G. J., van Rheenen, W., Franke, L., Jansen, R. C., van Es, M. A., van Vught, P. W. J., Blauw, H. M., Groen, E. J. N., Horvath, S., Estrada, K., Rivadeneira, F., Hofman, A., Uitterlinden, A. G., Robberecht, W., Andersen, P. M., Melki, J., Meininger, V., Hardiman, O., ... Brown Jr., R. H. (2012). Mapping of Gene Expression Reveals CYP27A1 as a Susceptibility Gene for Sporadic ALS. *PLoS ONE*, 7(4), Article e35333. <https://doi.org/10.1371/journal.pone.0035333>

Copyright

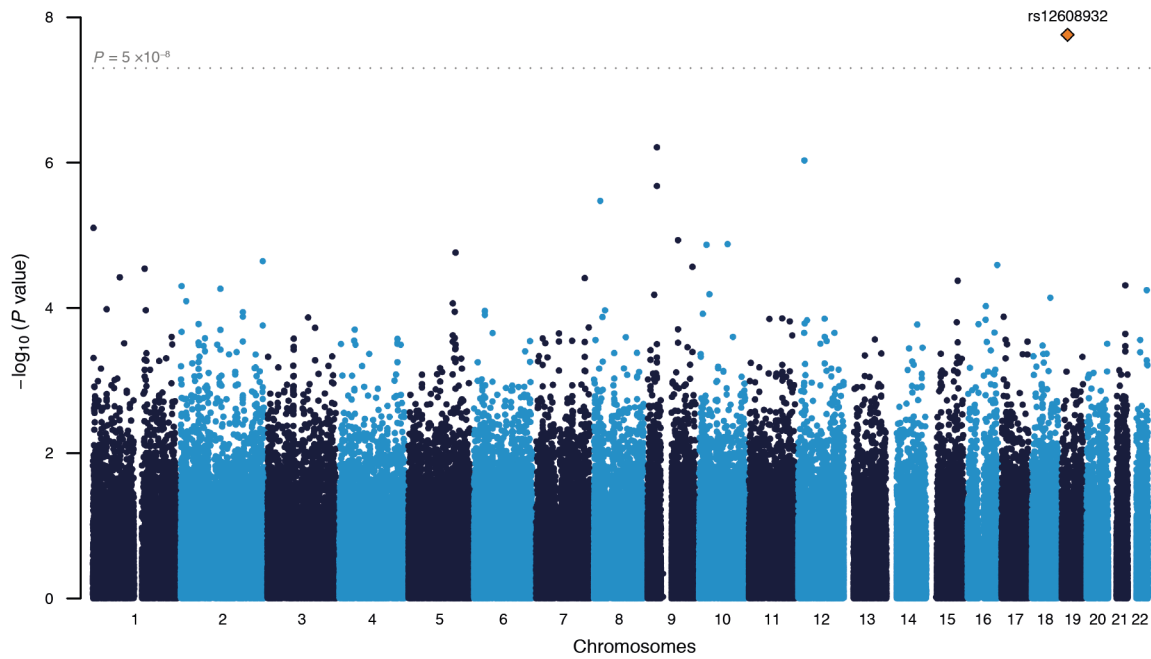
Other than for strictly personal use, it is not permitted to download or to forward/distribute the text or part of it without the consent of the author(s) and/or copyright holder(s), unless the work is under an open content license (like Creative Commons).

The publication may also be distributed here under the terms of Article 25fa of the Dutch Copyright Act, indicated by the "Taverne" license. More information can be found on the University of Groningen website: <https://www.rug.nl/library/open-access/self-archiving-pure/taverne-amendment>.

Take-down policy

If you believe that this document breaches copyright please contact us providing details, and we will remove access to the work immediately and investigate your claim.

Downloaded from the University of Groningen/UMCG research database (Pure): <http://www.rug.nl/research/portal>. For technical reasons the number of authors shown on this cover page is limited to 10 maximum.



On the X -axis genomic positions of SNPs aligned to NCBI genome build 36, chromosome borders are designated by changing dot colors. On the Y -axis $-\log_{10}(p \text{ values})$ for association between SNP genotype and disease status as obtained from logistic regression analyses in the GWAS discovery set. The dotted line indicates the threshold for genome-wide significance ($p=5 \times 10^{-8}$). GWAS, genome-wide association study.