

University of Groningen

Erratum: Hemodialysis Induces an Acute Decline in Cerebral Blood Flow in Elderly Patients (vol 29, pg 1317, 2018)

Polinder-Bos, H. A.; Váñez García, David; Kuipers, Johanna; Elting, J. W. J.; Aries, M. J. H.; Krijnen, W. P.; Groen, H.; Willemsen, A. T. M.; van Laar, P. J.; Strijkert, F.

Published in:
Journal of the American Society of Nephrology

DOI:
[10.1681/ASN.2018060650](https://doi.org/10.1681/ASN.2018060650)

IMPORTANT NOTE: You are advised to consult the publisher's version (publisher's PDF) if you wish to cite from it. Please check the document version below.

Document Version
Publisher's PDF, also known as Version of record

Publication date:
2018

[Link to publication in University of Groningen/UMCG research database](#)

Citation for published version (APA):

Polinder-Bos, H. A., Váñez García, D., Kuipers, J., Elting, J. W. J., Aries, M. J. H., Krijnen, W. P., Groen, H., Willemsen, A. T. M., van Laar, P. J., Strijkert, F., Luurtsema, G., Slart, R. H. J. A., Westerhuis, R., Gansevoort, R. T., Gaillard, C. A. J. M., & Franssen, C. F. A. M. (2018). Erratum: Hemodialysis Induces an Acute Decline in Cerebral Blood Flow in Elderly Patients (vol 29, pg 1317, 2018). *Journal of the American Society of Nephrology*, 29(8), 2256. <https://doi.org/10.1681/ASN.2018060650>

Copyright

Other than for strictly personal use, it is not permitted to download or to forward/distribute the text or part of it without the consent of the author(s) and/or copyright holder(s), unless the work is under an open content license (like Creative Commons).

The publication may also be distributed here under the terms of Article 25fa of the Dutch Copyright Act, indicated by the "Taverne" license. More information can be found on the University of Groningen website: <https://www.rug.nl/library/open-access/self-archiving-pure/taverne-amendment>.

Take-down policy

If you believe that this document breaches copyright please contact us providing details, and we will remove access to the work immediately and investigate your claim.

Downloaded from the University of Groningen/UMCG research database (Pure): <http://www.rug.nl/research/portal>. For technical reasons the number of authors shown on this cover page is limited to 10 maximum.

CORRECTION

Polinder-Bos HA, Vález García D, Kuipers J, Elting JWJ, Aries MJH, Krijnen WP, Groen H, Willemsen ATM, van Laar PJ, Strijkert F, Luurtsema G, Slart RHJA, Westerhuis R, Gansevoort RT, Gaillard CAJM, Franssen CFM: Hemodialysis Induces an

Acute Decline in Cerebral Blood Flow in Elderly Patients. *J Am Soc Nephrol* 29: 1317–25, 2018. The authors wish to make a correction to Figure 1. The number of ‘Maintenance hemodialysis patients aged 65 years and older’ in the first box should be ‘n=92’ instead of ‘n=106’. This error does not alter the conclusions of the study. The correct version of Figure 1 is presented here:

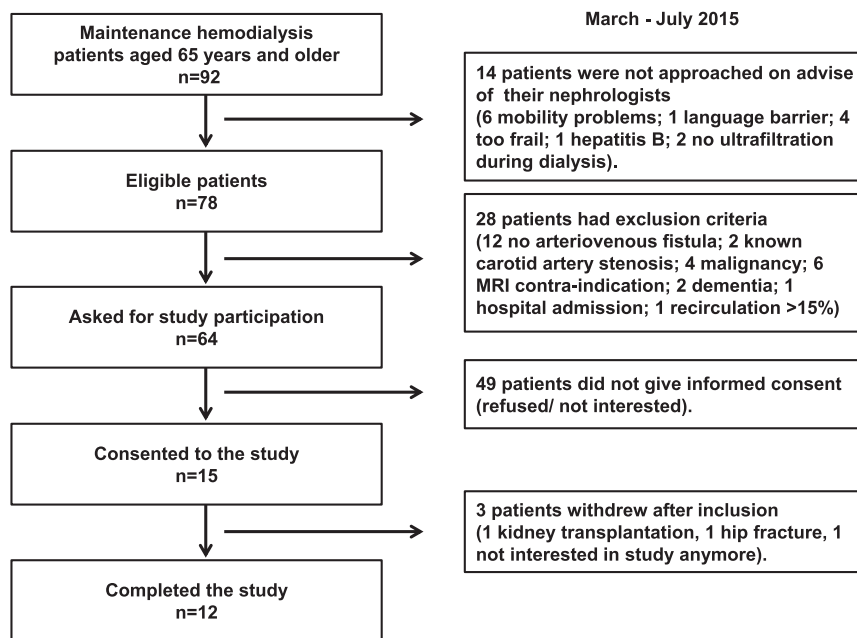


Figure 1. Flow chart demonstrating the phases of the study from screening to inclusion and completion of the study.