

University of Groningen

Huisplaatsen in De Onlanden

Nicolay, Johan

IMPORTANT NOTE: You are advised to consult the publisher's version (publisher's PDF) if you wish to cite from it. Please check the document version below.

Document Version

Publisher's PDF, also known as Version of record

Publication date:

2018

[Link to publication in University of Groningen/UMCG research database](#)

Citation for published version (APA):

Nicolay, J. (2018). *Huisplaatsen in De Onlanden: De geschiedenis van een Drents veenweidegebied*. (34 redactie) (Grondsporen; Nr. 34). Groninger Instituut voor Archeologie, Rijksuniversiteit Groningen.

Copyright

Other than for strictly personal use, it is not permitted to download or to forward/distribute the text or part of it without the consent of the author(s) and/or copyright holder(s), unless the work is under an open content license (like Creative Commons).

The publication may also be distributed here under the terms of Article 25fa of the Dutch Copyright Act, indicated by the "Taverne" license. More information can be found on the University of Groningen website: <https://www.rug.nl/library/open-access/self-archiving-pure/taverne-amendment>.

Take-down policy

If you believe that this document breaches copyright please contact us providing details, and we will remove access to the work immediately and investigate your claim.

Downloaded from the University of Groningen/UMCG research database (Pure): <http://www.rug.nl/research/portal>. For technical reasons the number of authors shown on this cover page is limited to 10 maximum.


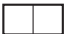



Bijlage 2.1

Geselecteerde profielbeschrijvingen van de huisplaatsen (inclusief de nieuw ontdekte huisplaatsen 99-104) en hun natuurlijke ondergrond, en van de gelaagdheid in boring 2402.

lithologie

	veen
	detritusgytttja
	klei
	zand
	leem

bijmengingen

	sterk gyttjeus
	licht kleiig
	sterk kleiig
	licht siltig
	matig siltig
	licht zandig
	sterk zandig













humusgehalte

{	licht humeus
{}	matig humeus
{}}	sterk humeus

diversen

- monster (macrobotanische analyse)
- ¹⁴C-datering (geaccepteerd)
- ¹⁴C-datering (verworpen)

interpretatie

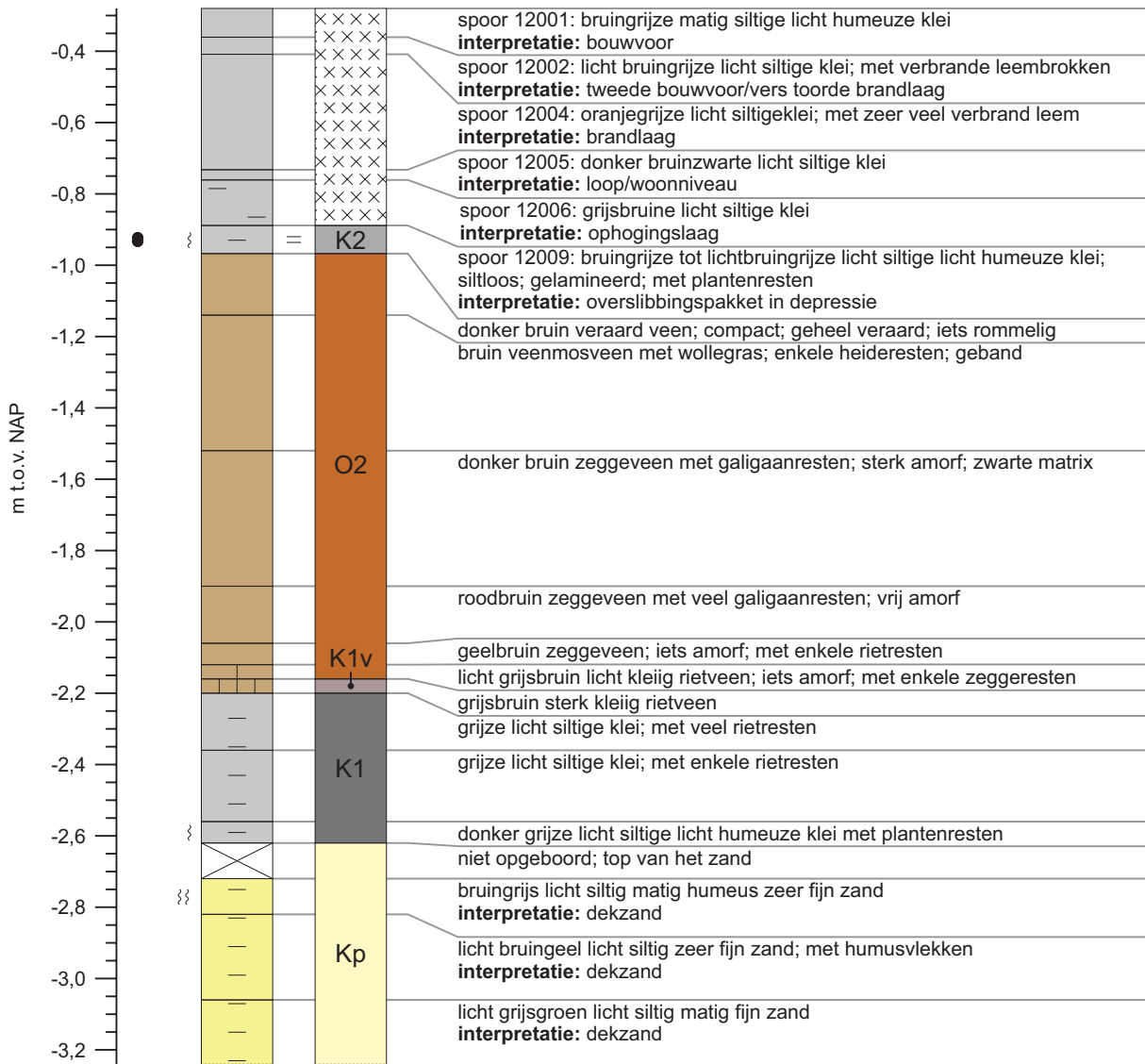
	(recent) opgebrachte grond
	antropogene pakketten
	eenheid Om (organische meerafzettingen)
	eenheid O3 (mesotroof veen)
	eenheid O2 (mesotroof en oligotroof veen)
	eenheid O1 (mesotroof en oligotroof veen)
	eenheid Oo (veen)
	eenheid K3 (klei)
	eenheid Kk (klapklei)
	eenheid K2 (klei)
	eenheid K1v (venige klei en kleiig veen)
	eenheid K1 (klei)
	eenheid Kp (overwegend zand)

overige lithologie

- ◇ kleibrokken
- ◆ veenbrokken
- ◇ veen- en kleibrokken
- = gelaagd/gelamineerd

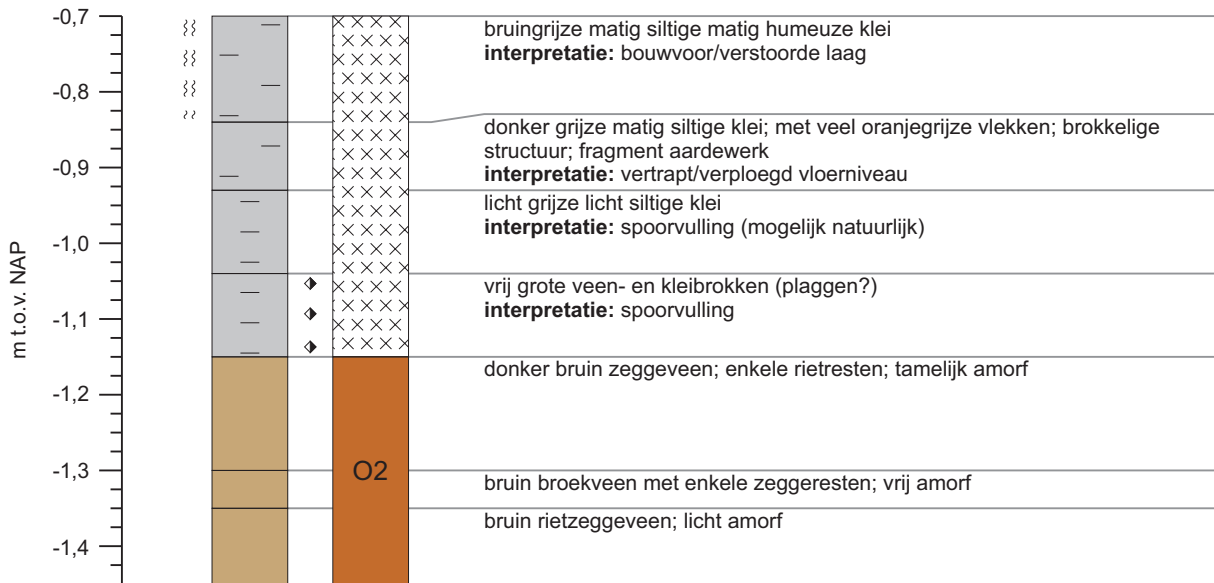
huisplaats 12

(zuidprofiel putje en boring; 228857/578147, z=0,28 m -NAP)



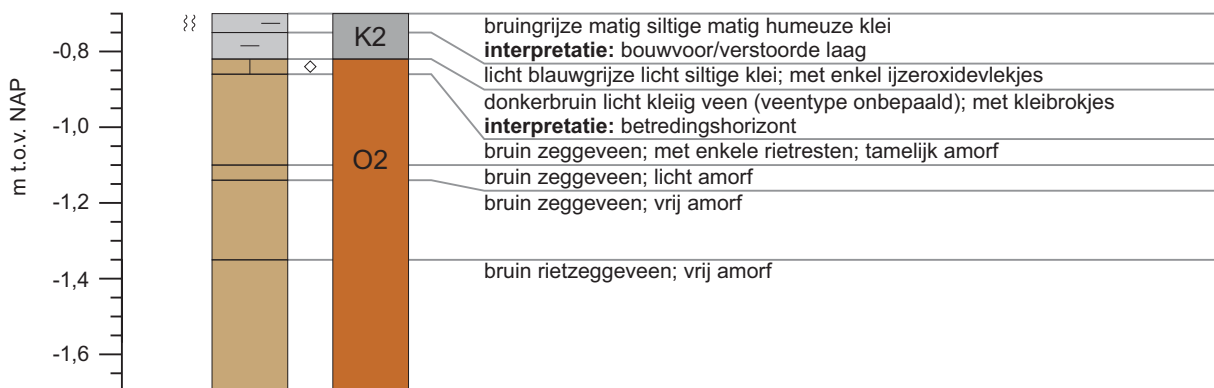
huisplaats 100

(boring 9968; ca. 226023/578418, z=ca. 0,70 m -NAP)



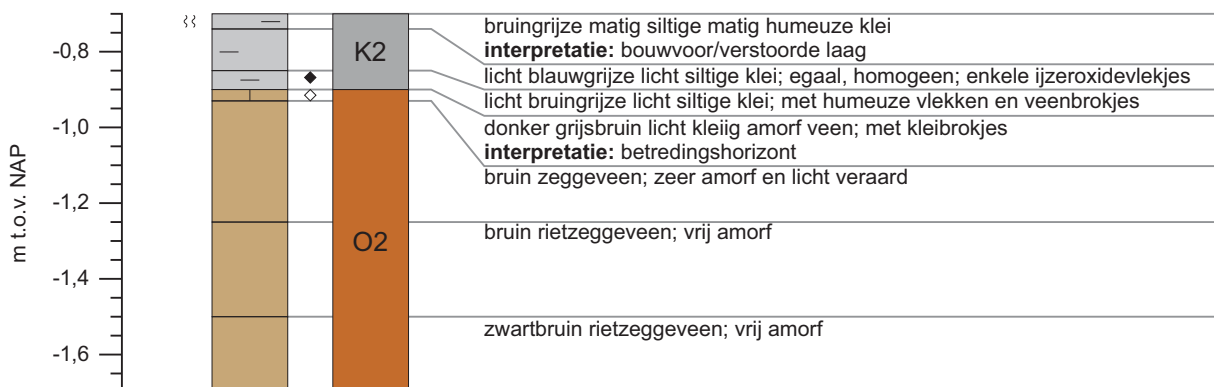
huisplaats 100

(boring 9969; ca. 226023/578418, z=ca. 0,70 m -NAP)



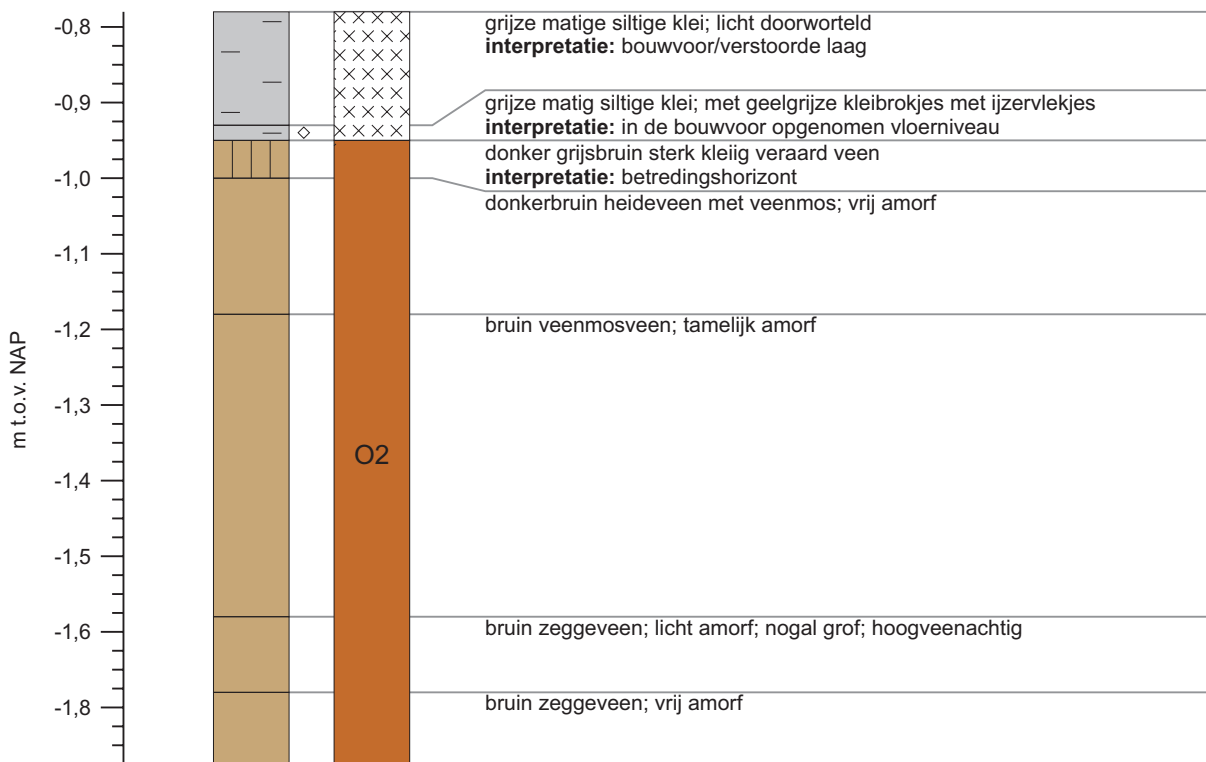
huisplaats 100

(boring 9970; ca. 226023/578418, z=ca. 0,70 m -NAP)



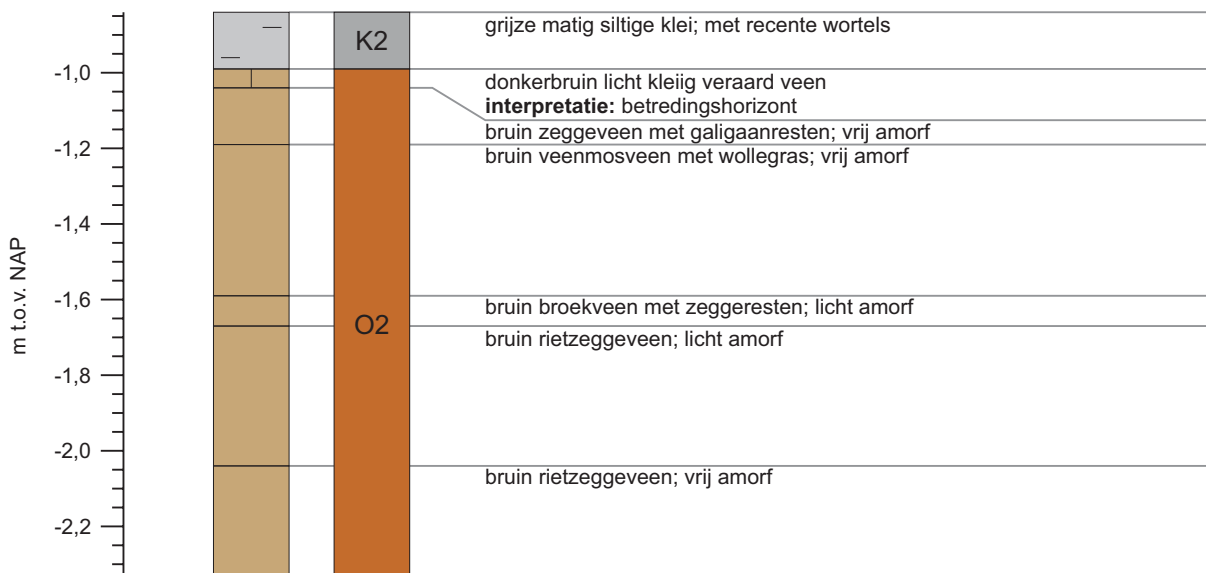
huisplaats 101

(boring 9956; 227969/578471, z=0,78 m -NAP)



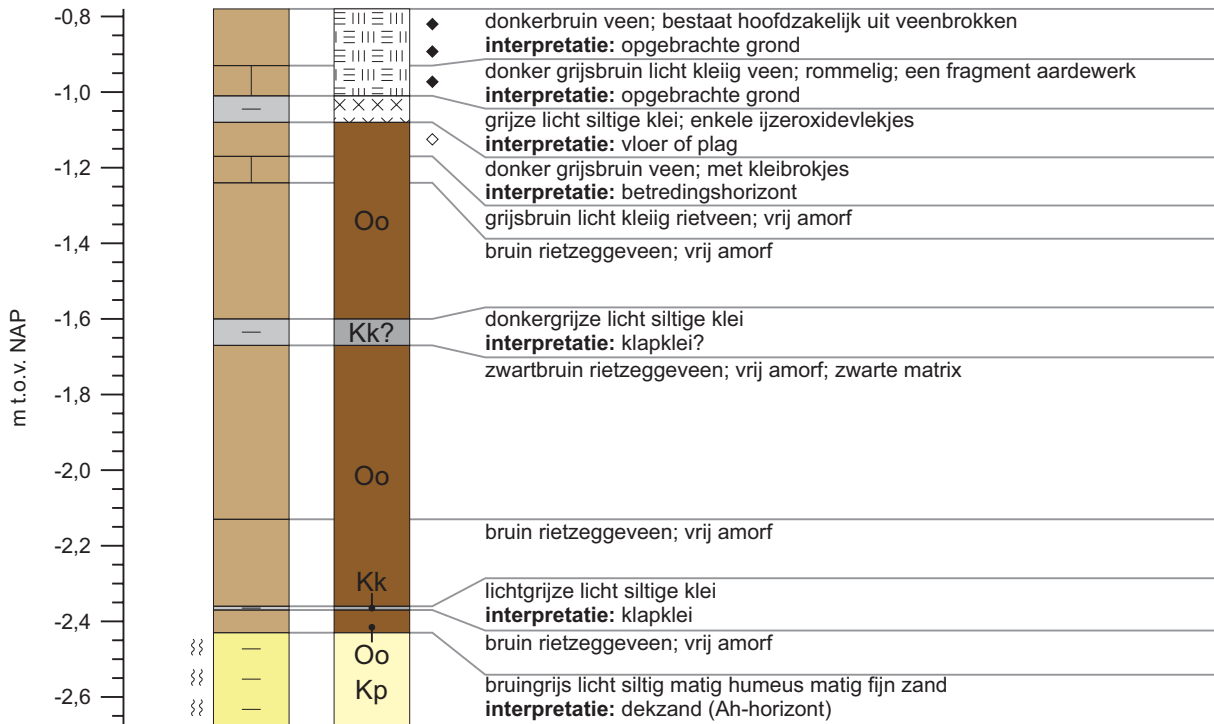
huisplaats 101

(boring 9954; 227961/578472, z=0,84 m -NAP)



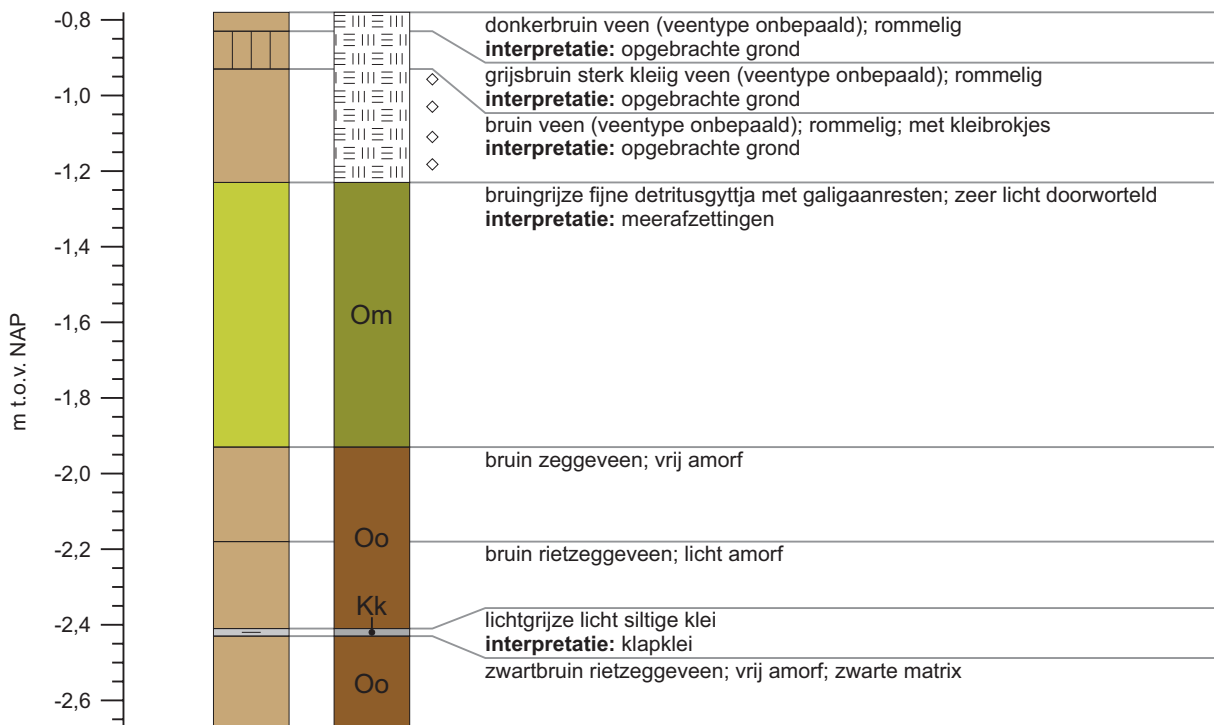
huisplaats 102

(boring 9982; ca. 226275/578136 (centrumcoördinaten locatie), z=ca. 0,78 m -NAP)



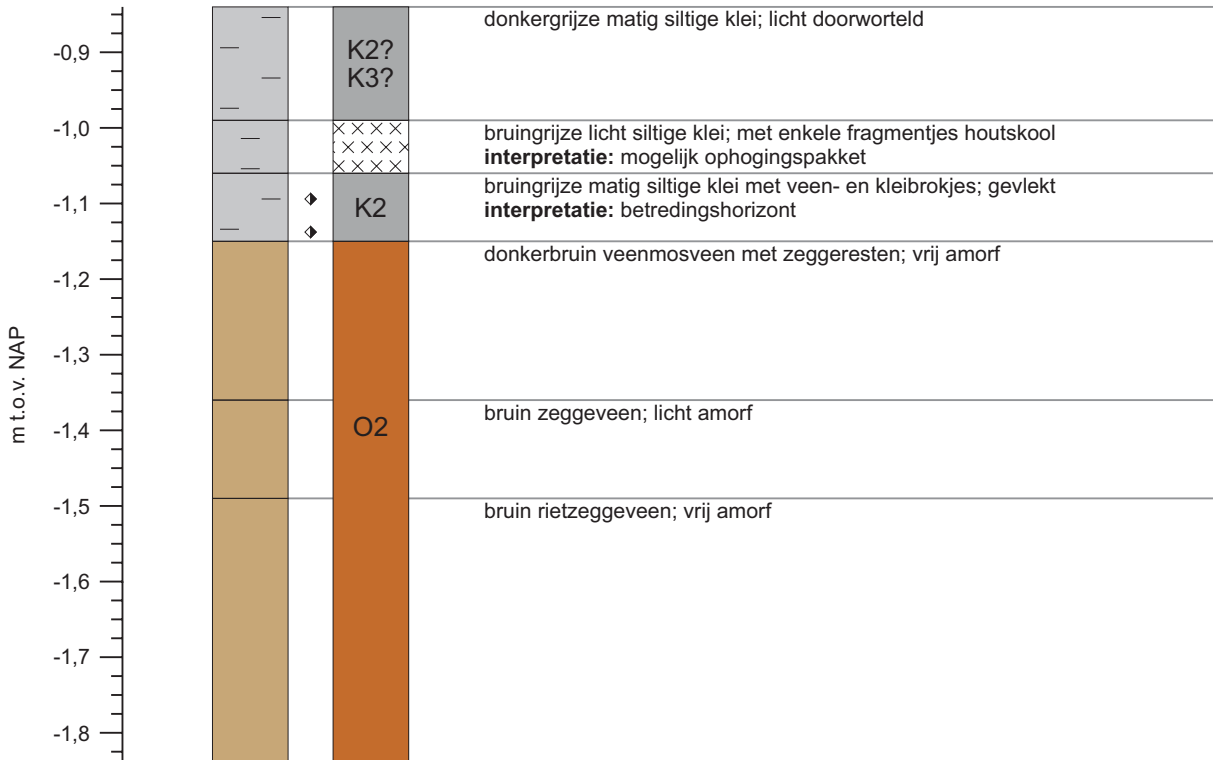
huisplaats 102

(boring 9983; ca. 226275/578136 (centrumcoördinaten locatie), z=ca. 0,78 m -NAP)



huisplaats 103

(boring 9960; 228275/578890, z=ca. 0,84 m -NAP)



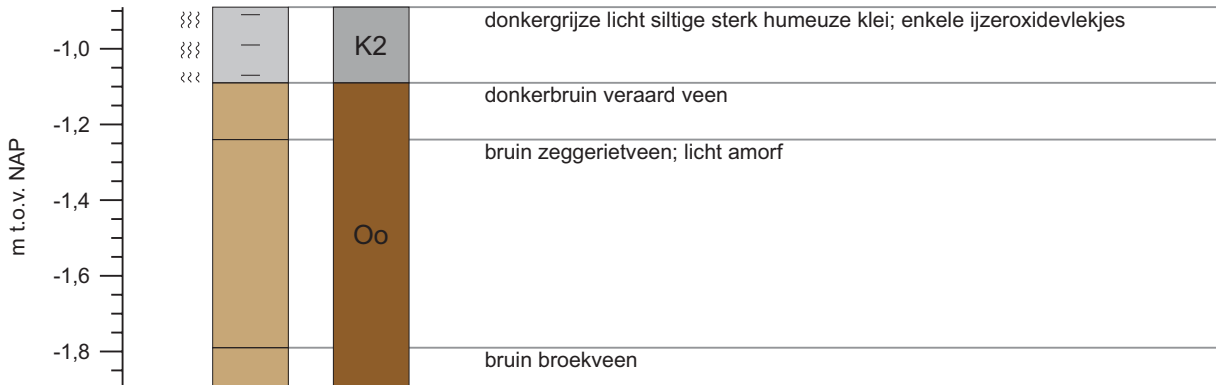
huisplaats 103

(boring 9961; 228273/578892, z=ca. 0,83 m -NAP)



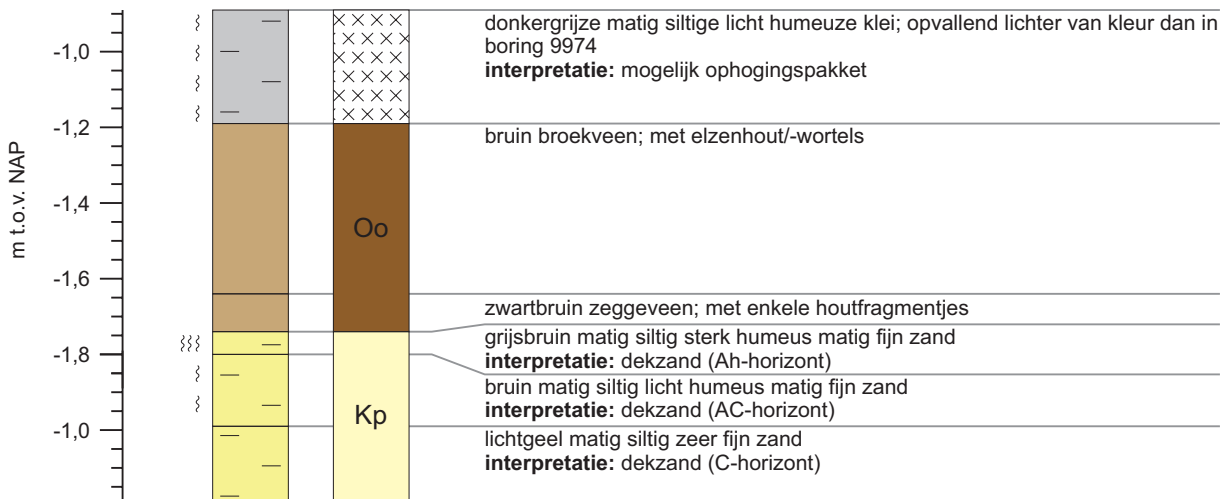
huisplaats 104

(boring 9974; 226379/577765, z= 0,89 m -NAP)



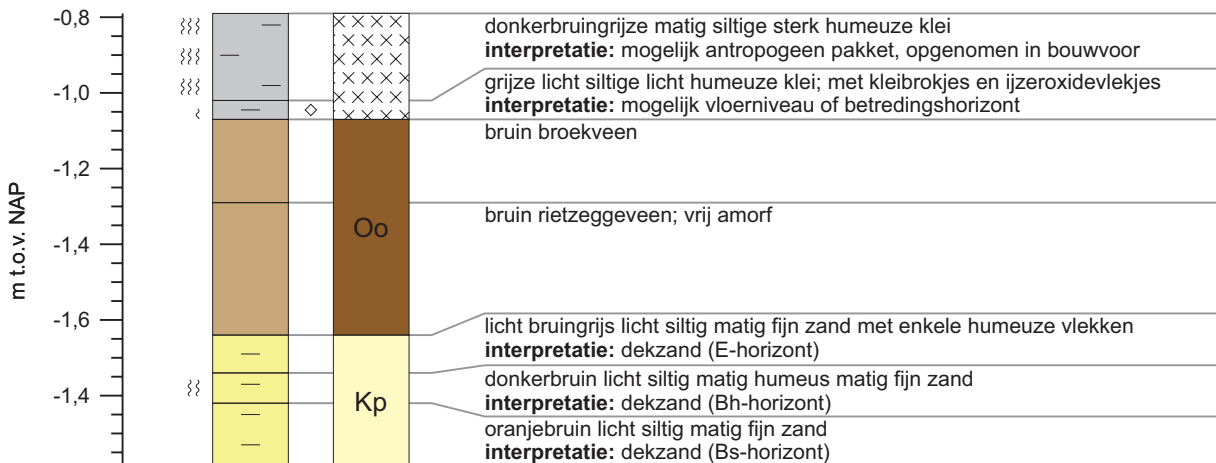
huisplaats 104

(boring 9975; 226375/577765, z= 0,89 m -NAP)



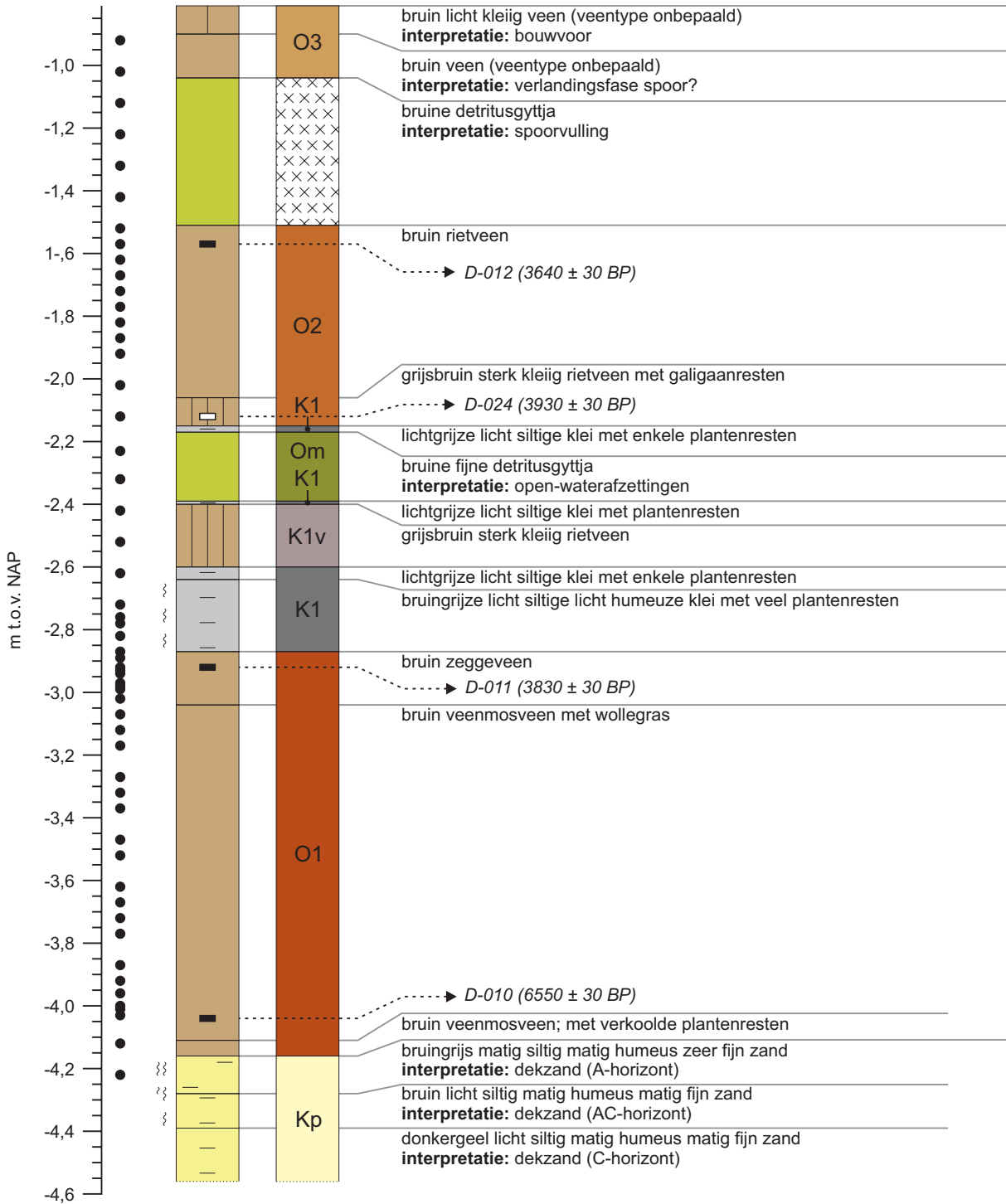
huisplaats 104

(boring 9976; 226370/577760, z= 0,79 m -NAP)



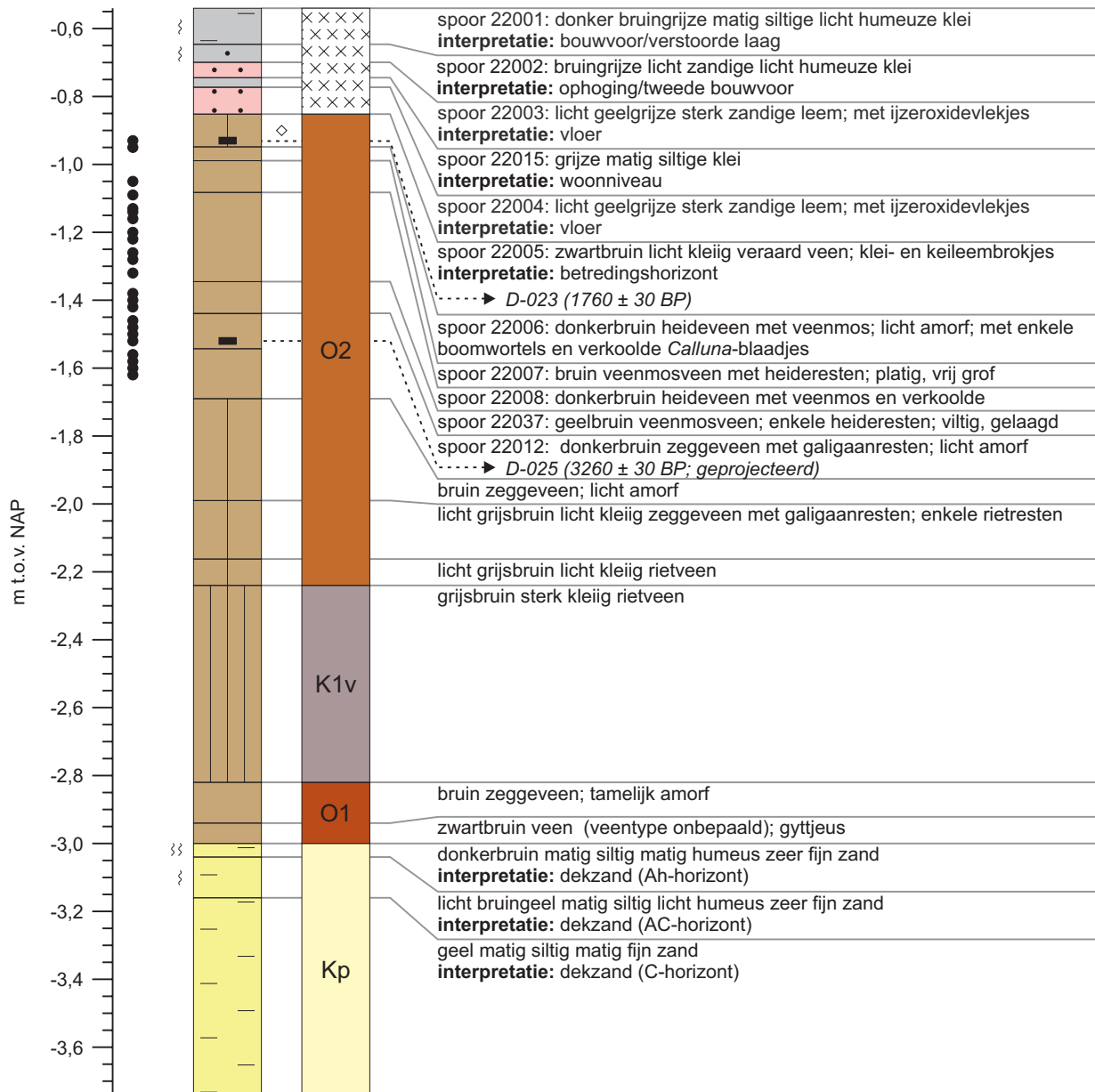
boring 2402

(228580/579044, z=0,81 m -NAP)



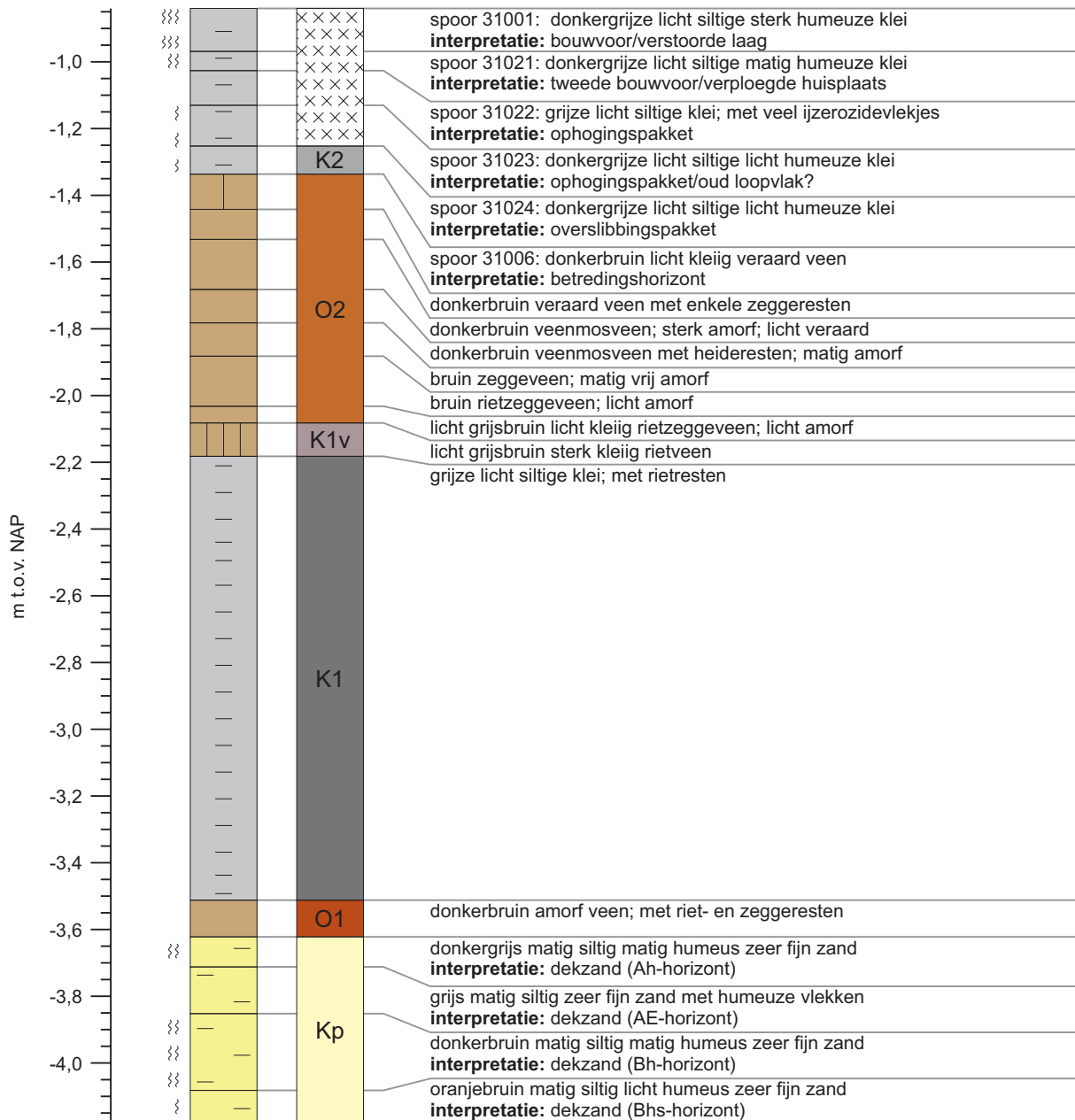
huisplaats 22

(zuidprofiel, ca. 7,5 m en boring 22; 228711/578.467, z=0,54 m -NAP)



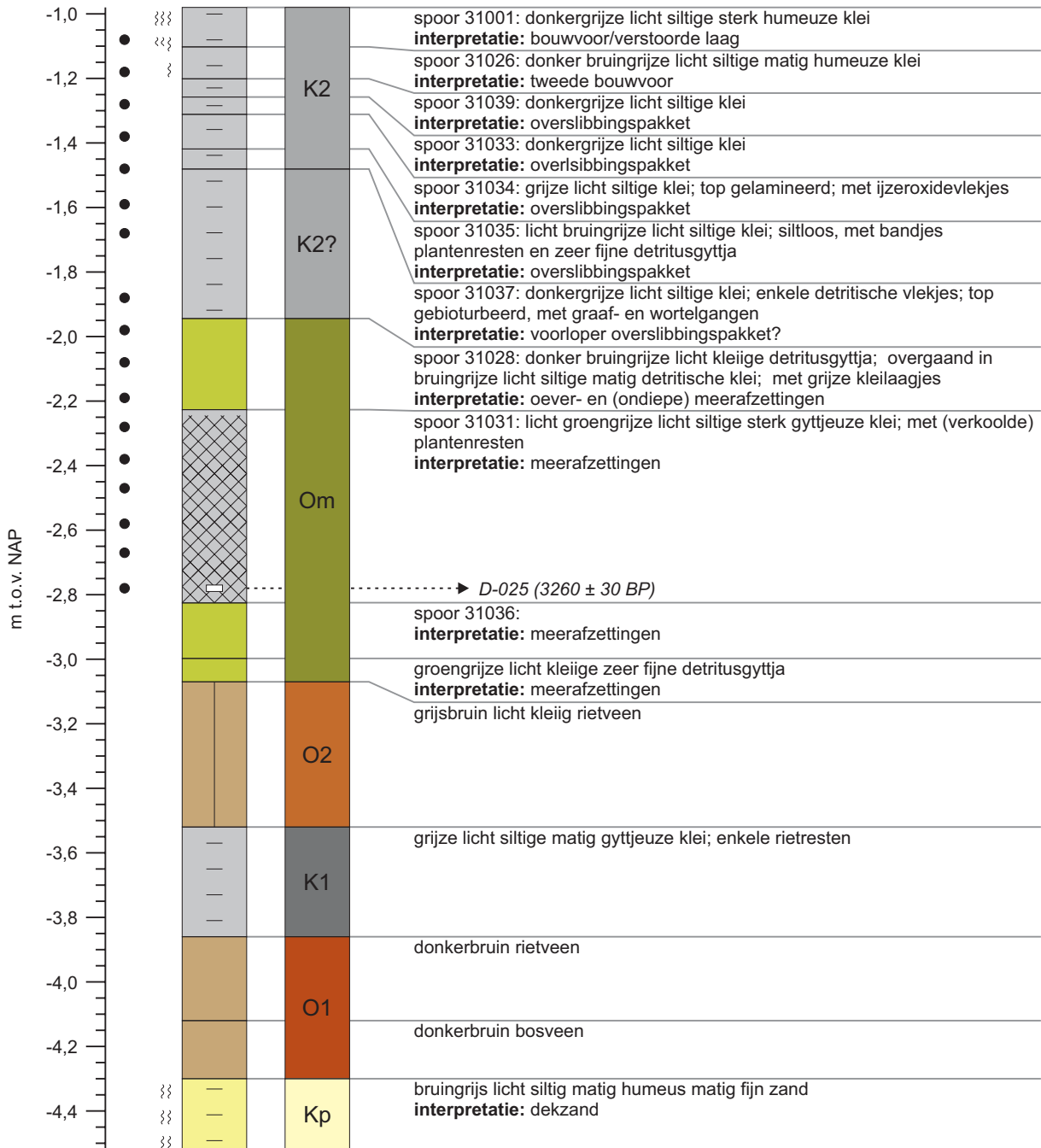
huisplaats 31/32

(zuidprofiel, ca. 38 m en boring 31; 228788/579313, z=0,84 m -NAP)



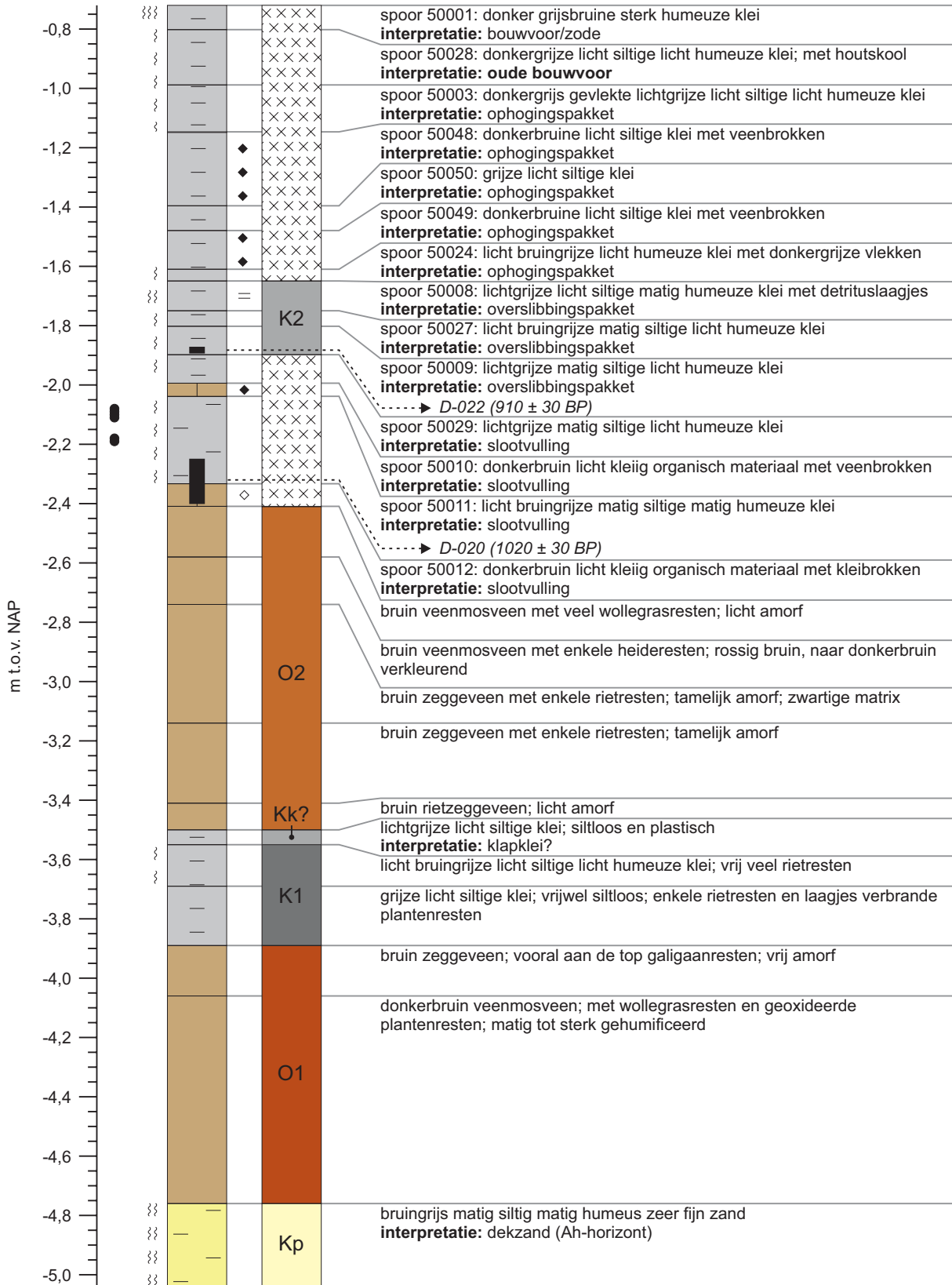
huisplaats 31/32

(zuidprofiel, ca. 69 m en boring 3101; 228725/579295, z=0,98 m -NAP)



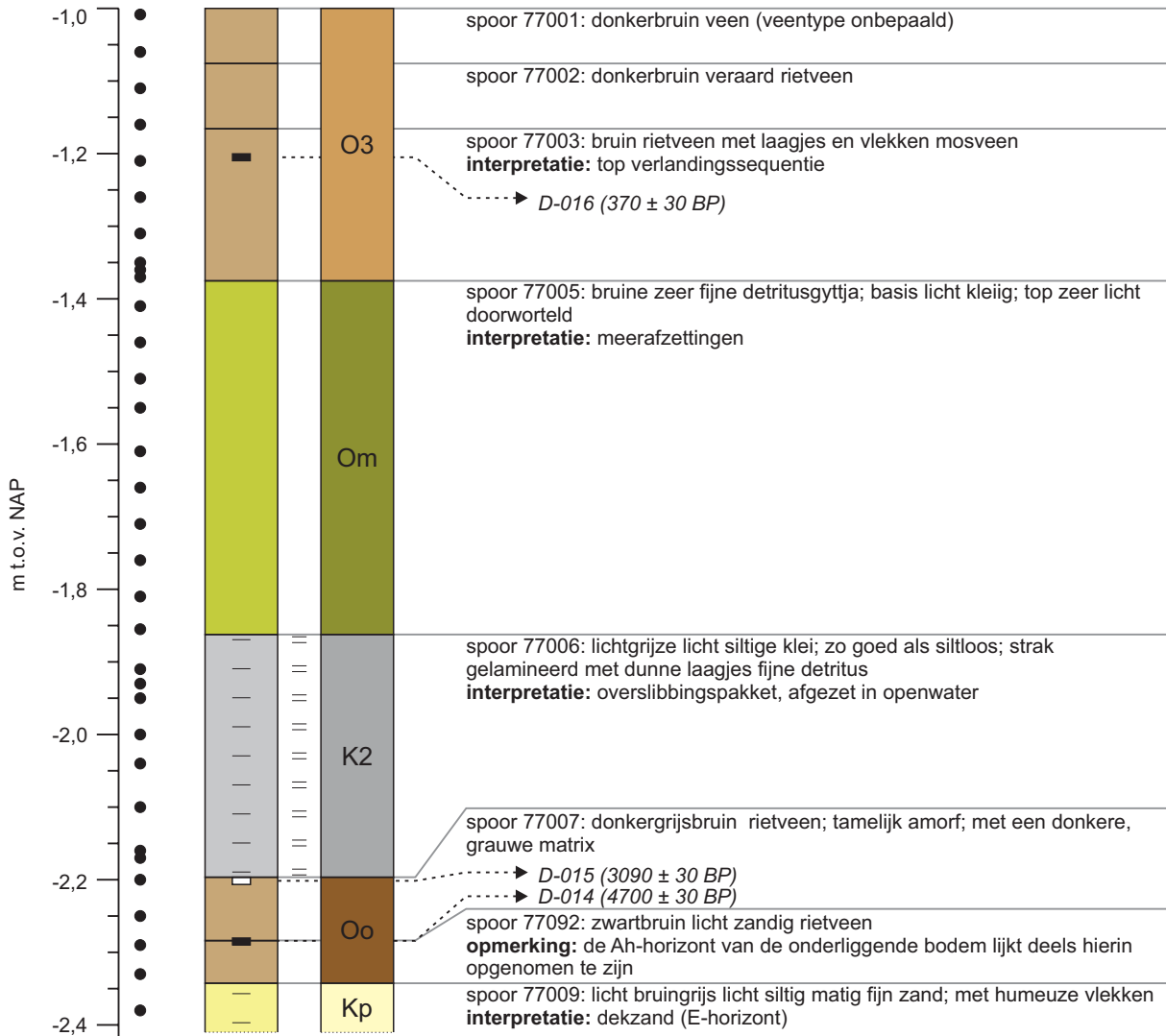
huisplaats 50

(noordprofiel E, ca. 0,5 m en boring 50; 227623/579179, z=0,72 m -NAP)



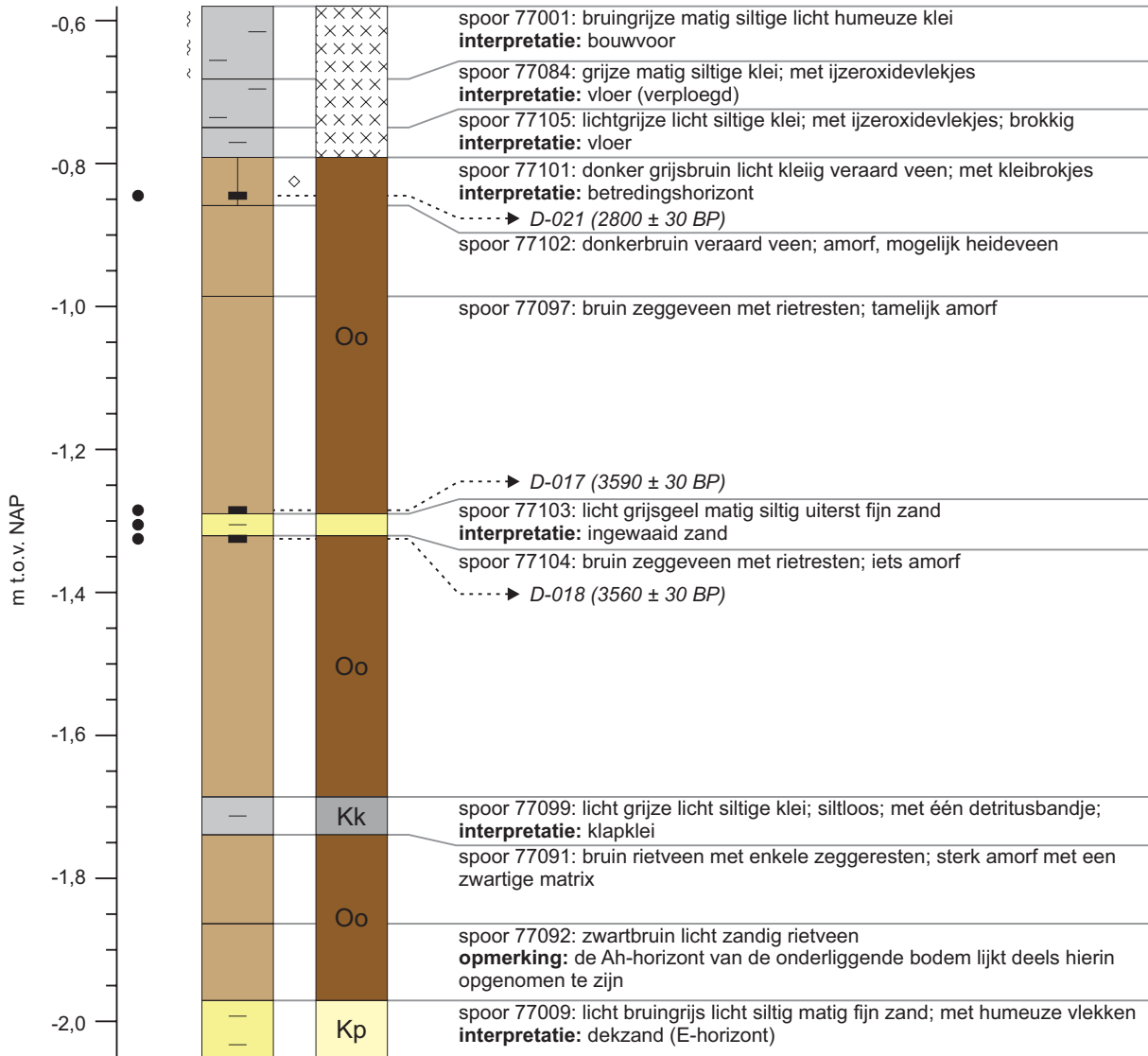
huisplaats 77

(zuidprofiel, ca. 15 m; 228272/577955, z=1,00 m -NAP)



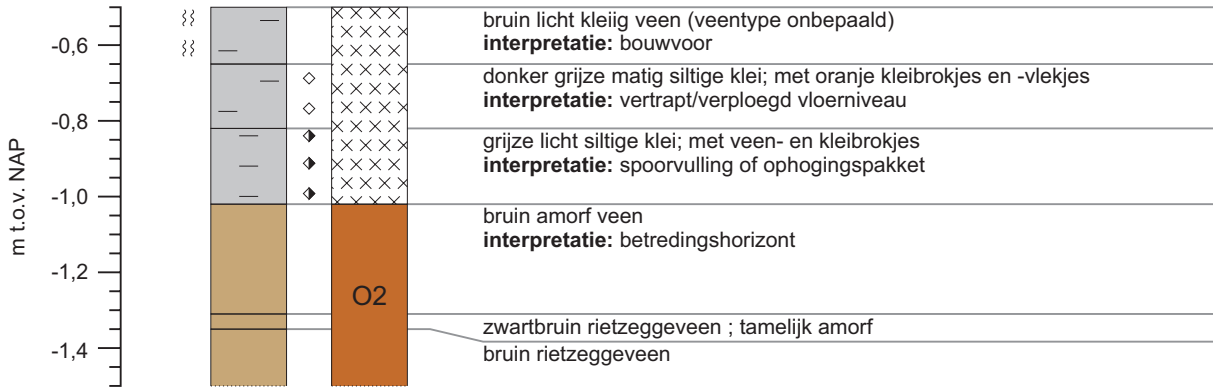
huisplaats 77

(zuidprofiel, ca. 46-48 m; 228241/577948, z=0,58 m -NAP)



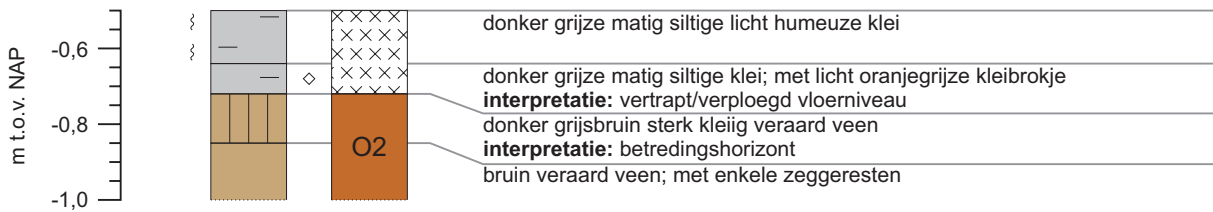
huisplaats 99

(boring 9963; ca. 225973/578225, z=ca. 0,5 m -NAP)



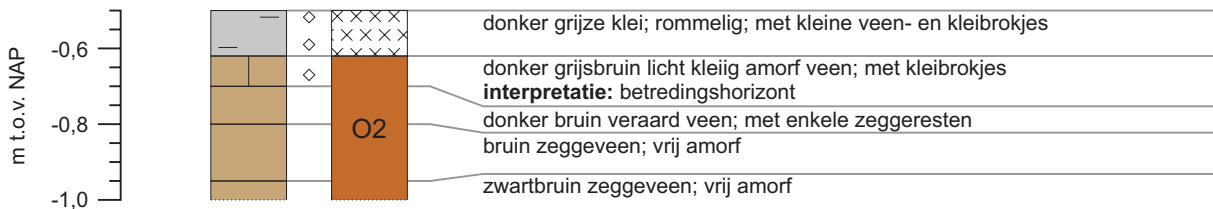
huisplaats 99

(boring 9964; ca. 225973/578225, z=ca. 0,5 m -NAP)



huisplaats 99

(boring 9965; ca. 225973/578225, z=ca. 0,5 m -NAP)



huisplaats 99

(boring 9966; ca. 225973/578225, z=ca. 0,5 m -NAP)

