

University of Groningen

Thiol-based cardioprotection

de Koning, Marie-Sophie

DOI:
[10.33612/diss.627206227](https://doi.org/10.33612/diss.627206227)

IMPORTANT NOTE: You are advised to consult the publisher's version (publisher's PDF) if you wish to cite from it. Please check the document version below.

Document Version
Publisher's PDF, also known as Version of record

Publication date:
2023

[Link to publication in University of Groningen/UMCG research database](#)

Citation for published version (APA):
de Koning, M.-S. (2023). *Thiol-based cardioprotection*. [Thesis fully internal (DIV), University of Groningen]. University of Groningen. <https://doi.org/10.33612/diss.627206227>

Copyright

Other than for strictly personal use, it is not permitted to download or to forward/distribute the text or part of it without the consent of the author(s) and/or copyright holder(s), unless the work is under an open content license (like Creative Commons).

The publication may also be distributed here under the terms of Article 25fa of the Dutch Copyright Act, indicated by the "Taverne" license. More information can be found on the University of Groningen website: <https://www.rug.nl/library/open-access/self-archiving-pure/taverne-amendment>.

Take-down policy

If you believe that this document breaches copyright please contact us providing details, and we will remove access to the work immediately and investigate your claim.

Downloaded from the University of Groningen/UMCG research database (Pure): <http://www.rug.nl/research/portal>. For technical reasons the number of authors shown on this cover page is limited to 10 maximum.

CHAPTER 4

Systemic Oxidative Stress Associates with Disease Severity and Outcome in Patients with New-Onset or Worsening Heart Failure

Marie-Sophie L.Y. de Koning, Johanna E. Emmens, Esteban Romero-Hernández, Arno R. Bourgonje, Solmaz Assa, Sylwia M. Figarska, John G.F. Cleland, Nilesh J. Samani, Leong L. Ng, Chim C. Lang, Marco Metra, Gerasimos S. Filippatos, Dirk J. van Veldhuisen, Stefan D. Anker, Kenneth Dickstein, Adriaan A. Voors, Erik Lipsic, Harry van Goor, and Pim van der Harst

ABSTRACT

Background

Oxidative stress may be a key pathophysiological mediator in the development and progression of heart failure (HF). The role of serum free thiol concentrations, as a marker of systemic oxidative stress, in HF remains largely unknown.

Objectives

The purpose of this study was to investigate associations between serum free thiol concentrations and disease severity and clinical outcome in patients with new-onset or worsening HF.

Methods

Serum free thiol concentrations were determined by colorimetric detection in 3,802 patients from the BIOlogy Study to TAIlored Treatment in Chronic Heart Failure (BIOSTAT-CHF). Associations between free thiol concentrations and clinical characteristics and outcomes, including all-cause mortality, cardiovascular mortality, and a composite of HF hospitalization and all-cause mortality during a 2-year follow-up, were reported.

Results

Lower serum free thiol concentrations were associated with more advanced HF, as indicated by worse NYHA class, higher plasma NT-proBNP ($P<0.001$ for both) and with higher rates of all-cause mortality alone (hazard ratio (HR) per standard deviation (SD) decrease in free-thiols: 1.253, 95% confidence interval (CI): 1.171 – 1.341, $P<0.001$), cardiovascular mortality (HR per SD: 1.182, 95% CI: 1.086 – 1.288, $P<0.001$), and the composite outcome per SD: 1.058, 95% confidence interval (CI): 1.001 – 1.118, $P=0.046$).

Conclusions

In patients with new-onset or worsening HF, a lower serum free thiol concentration, indicative of higher oxidative stress, is associated with increased HF severity and poorer prognosis. Our results do not prove causality, but our findings may be used as rationale for future (mechanistic) studies on serum free thiol modulation in heart failure.

INTRODUCTION

Oxidative stress has been identified as an important pathophysiological mediator in the development and progression of heart failure (HF).^{1,2} Oxidative stress reflects an imbalance between the production of reactive oxygen species (ROS) and the antioxidant capacity.³ Although ROS provide important beneficial physiological functions at lower concentrations, excess of ROS can cause DNA damage and harmful modifications of proteins. This can result in cellular dysfunction, including changes in cardiomyocyte excitation-contraction coupling, calcium handling and energy metabolism.¹ Excess of ROS can also exert pro-fibrotic effects, leading to extracellular matrix remodeling and eventually worsening of diastolic and systolic function.⁴⁻⁶

Free thiols, organosulfur compounds with an –SH group, act as one of the most potent and versatile endogenous defense mechanisms against oxidative stress. Extracellular, i.e. circulating, thiols are the sum of and high- and low-molecular-weight thiols and are referred to as total free thiols. Free thiols mainly comprise of high-molecular weight proteins with an –SH group attached, of which albumin is the most relevant example, whereas circulating low-molecular weight thiols such as cysteine or glutathione only account for <3-5%.⁷ By forming stable disulphide bonds through ROS scavenging, free thiols prevent ROS from inflicting lipid and protein oxidation and subsequent myocardial structural damage.⁷ Depletion of the antioxidant free thiol pool reflects greater oxidative stress, and has been linked to the severity of oxidative stress-associated diseases.^{8,9} Increasing free thiol levels (e.g. by N-acetylcysteine) improved cardiac function in animal models of HF and cardiac injury.¹⁰⁻¹³ In addition, clinical trials in small numbers of patients with myocardial infarction or HF suggested that N-acetylcysteine may reduce oxidative stress.¹⁴⁻¹⁶ Hence, targeting thiol levels may hold promise as a potential therapeutic strategy in patients with HF. Accordingly, we investigated the associations between serum free thiol concentrations and clinical characteristics and outcomes in a large cohort of patients with new-onset or worsening HF including a broad range of left ventricular phenotypes.

METHODS

Study population

We measured the concentration of free thiols in archived serum samples of the multinational, prospective, observational BIOSTAT-CHF study. Study design and data collection have been described in full elsewhere.¹⁷ In brief, in the BIOSTAT-CHF index cohort, 2,516 patients with new-onset or worsening signs and/or symptoms of HF from 11 European countries were included between 2010 and 2012. Participants were documented with a left ventricular ejection fraction (LVEF) of $\leq 40\%$ or plasma N-terminal pro-B-type natriuretic peptide (NT-proBNP) of >2000 ng/L. In addition, participants were considered to be on suboptimal evidence-based treatment for HF before enrolment.¹⁸ A comparable validation cohort of BIOSTAT-CHF included another 1,738 patients from six centers in Scotland between 2010 and

2014, who had to have a previously documented admission for HF. No additional NT-proBNP criteria were used for patients with a LVEF >40% in the validation cohort, which resulted in a higher percentage of patients with a LVEF >45%: 34% in the validation cohort versus 7% in the index cohort. The BIOSTAT-CHF study was conducted according to the Declaration of Helsinki, approved by the ethics committee of each center and all participants provided written informed consent prior to any study-related procedures.

Detection of serum free thiols

Blood samples were drawn upon enrolment in the BIOSTAT-CHF cohort. Serum samples were stored at -80 °C until free thiol measurement. The free thiol concentration was detected as previously described, with minor modifications.^{19,20} In short, after thawing, 75 µl serum samples were diluted 1:4 with a 0.1 M Tris buffer (pH 8.2) and then transferred to a microplate. The background absorption was measured, using a Sunrise microplate reader (Tecan Trading AG, Männedorf, Switzerland) at 412 nm, with a reference filter at 630 nm. Subsequently, 10 µl 3.8 mM 5,5'-Dithio-bis(2-nitrobenzoic acid) (DTNB, CAS-number 69-78-3, Sigma Aldrich Corporation, Saint Louis, MO, USA) in a 0.1 M phosphate buffer (pH 7.0) was added to the samples. Following 20 min of incubation at room temperature, absorption was measured again and subtracted from background absorption. The concentration of free thiols in the samples was determined by parallel measurement of an L-cysteine (CAS-number 52-90-4, Fluka Biochemika, Buchs, Switzerland) calibration standard in the concentration range of 15.6–1000 µM in 0.1 M Tris and 10 mM EDTA (pH 8.2). All measurements were performed in duplo, where the mean of the free thiol value of both measurements was used for analyses. Measurements with a coefficient of variation >20% were excluded from further analysis.

Clinical outcome parameters

The primary clinical outcome parameter of this study was a composite endpoint of all-cause mortality and HF-related hospitalizations at 2 years. Our secondary outcome was all-cause mortality at 2 years. As sensitivity analysis, associations with cardiovascular mortality were studied. The cause of death and hospitalization was determined by the individual site investigators. Clinical events were collected during the 9 months follow-up study visit (index cohort), standard clinical follow-up and by telephonic contacts every 6 months for at least 2 years or until the end of follow-up (2015).

Statistical analysis

For this study, both BIOSTAT-CHF cohorts were analyzed together. Normally distributed variables were displayed as mean with standard deviation (SD), non-normally distributed variables as median with interquartile range [IQR], and categorical variables as numbers with percentages (%). Distribution of continuous data was visually inspected using normal probability (Q–Q) plots. Baseline characteristics were presented according to tertiles of serum free thiol levels. Between-group differences were compared using one-way analysis of variance (ANOVA), the Kruskal–Wallis test or the chi-square test, as appropriate. Clinical characteristics with a *P*-value <0.1 were selected from the baseline table to investigate their associations with

the serum free thiol concentration using univariable, age- and sex-adjusted and multivariable linear regression analyses. All variables with $P < 0.1$ in age- and sex-adjusted analyses were included in multivariable analysis and subjected to backward elimination. Variables with $P < 0.05$ were retained in the final multivariable regression model. Prior to linear regression, normal distribution of residuals was checked, as well as presence of outliers. All variables were standardized and non-normally distributed variables were log-transformed before entry into regression analysis. To assess associations with clinical outcomes at 2 years follow-up, follow-up time and clinical events were truncated at 730.5 days. Kaplan–Meier survival curves were drawn for tertiles of serum free thiols. The log-rank test was used to test for differences in outcomes between the tertiles. Subsequently, Cox proportional hazards regression analyses were performed to investigate associations between the free thiol concentration and disease outcome. The proportionality of hazards assumption was checked for all models to confirm absence of violation. Cox regression analyses were adjusted in a stepwise manner by first adjusting for age and sex and subsequently for sex and the previously published BIOSTAT-CHF risk models.²¹ Variables in the BIOSTAT-CHF risk model to predict the composite endpoint included age, HF hospitalization in the year before inclusion, edema, NT-proBNP, systolic blood pressure, haemoglobin, high-density lipoprotein levels, serum sodium concentration and the failure to prescribe a beta-blocker. When investigating the associations between free thiols and cardiovascular mortality, non-cardiovascular mortality was used as competing risk. For the primary and secondary endpoint, pre-specified subgroup analyses were performed, testing for interactions for age (≤ 70 vs > 70), sex, HF groups (HF with reduced ejection fraction (HFrEF) vs HF with mildly reduced ejection fraction (HFmrEF) vs HFpEF), ischemic etiology, NYHA class (II-II vs III-IV) and history of chronic kidney disease (CKD). In this study a P -value of < 0.05 was considered statistically significant. All analyses were conducted with R version 3.5.2 (R Foundation for Statistical Computing, Vienna, Austria).

RESULTS

Patient characteristics

Serum free thiol levels were measured in 3,802 participants of the BIOSTAT-CHF cohort. Mean free thiol concentration was 336 (SD 92) $\mu\text{mol/L}$. Baseline characteristics of the study population are presented according to tertiles of free thiol levels in **Table 1**.

Table 1 | Baseline characteristics of the study population according to tertiles of serum free thiol concentrations

	1st tertile n=1268	2nd tertile n=1267	3rd tertile n=1267	P-value
Serum free thiols (μmol/L)	246 [204;273] Full range (38-298)	339 [320;359] Full range (298-378)	423 [399;459] Full range (379-799)	
<i>Demographics</i>				
Age (years)	75.2 [66.9;81.5]	73.4 [64.1;80.4]	68.7 [59.7;76.5]	<0.001
Female sex	450 (36%)	403 (32%)	293 (23%)	<0.001
<i>Clinical characteristics</i>				
BMI (kg/m ²)	27.1 [23.8;31.1]	27.3 [24.1;31.6]	27.8 [24.6;31.9]	0.007
HF type				0.52
HF _r EF	753 (66%)	746 (65%)	747 (66%)	
HF _m rEF	197 (17%)	207 (18%)	223 (20%)	
HF _p EF	188 (17%)	187 (16%)	167 (15%)	
Months since HF diagnosis	10 [0;47]	19 [1;59]	15 [2;58]	0.003
Ischemic etiology	632 (56%)	701 (65%)	673 (64%)	<0.001
Inpatient at enrolment	1004 (79%)	789 (62%)	628 (50%)	<0.001
NYHA class				<0.001
I/II	372 (30%)	489 (39%)	629 (50%)	
III/IV	868 (70%)	756 (61%)	623 (50%)	
Systolic BP (mmHg)	120 [108;135]	124 [110;140]	123 [110;140]	<0.001
Diastolic BP (mmHg)	70 [60;80]	70 [63;80]	72 [65;80]	<0.001
Heart rate (bpm)	75 [65;88]	74 [64;87]	74 [65;85]	0.033
LVEF (%)	35 [25;43]	35 [25;43]	35 [25;43]	0.97
<i>Signs and symptoms</i>				
Peripheral oedema	790 (71%)	652 (60%)	528 (50%)	<0.001
Elevated JVP	372 (38%)	302 (30%)	233 (24%)	<0.001
Hepatomegaly	165 (14%)	106 (9%)	92 (8%)	<0.001
Pulmonary congestion	746 (61%)	613 (50%)	466 (38%)	<0.001
<i>Medical history</i>				
Anemia	560 (45%)	465 (38%)	342 (28%)	<0.001
Atrial fibrillation	618 (49%)	576 (46%)	508 (40%)	<0.001
Diabetes Mellitus	404 (32%)	425 (34%)	404 (32%)	0.60
COPD	242 (19%)	233 (19%)	193 (15%)	0.025
CKD	561 (44%)	470 (37%)	319 (26%)	<0.001
Hypertension	798 (63%)	747 (59%)	751 (59%)	0.08
PAVD	181 (14%)	194 (16%)	222 (18%)	0.07
Stroke	179 (14%)	188 (15%)	133 (11%)	0.002
PCI	217 (17%)	250 (20%)	287 (23%)	0.002
CABG	221 (17%)	214 (17%)	220 (17%)	0.93
<i>Medicines</i>				
Loop diuretics	1259 (99%)	1256 (99%)	1256 (99%)	0.88
Loop diuretic dose (mg furosemide equivalent)	50 [40;120]	40 [40;80]	40 [40;80]	<0.001
ACEi/ARB	860 (68%)	880 (70%)	978 (77%)	<0.001
Beta-blocker	985 (78%)	989 (78%)	1017 (80%)	0.23
MRA	574 (45%)	549 (43%)	542 (43%)	0.42

Laboratory data

Hemoglobin (g/dL)	12.8 [11.4;14.1]	13.2 [11.8;14.5]	13.7 [12.5;14.9]	<0.001
Leucocytes (10 ⁹ /L)	7.8 [6.3;9.7]	7.7 [6.3;9.4]	7.5 [6.2;9.2]	0.015
Sodium (mmol/L)	139 [136;141]	139 [137;141]	140 [138;141]	<0.001
Potassium (mmol/L)	4.2 [3.9;4.6]	4.3 [4.0;4.6]	4.3 [4.0;4.6]	0.007
Urea (mmol/L)	11.8 [8.1;19.3]	9.5 [7.0;14.1]	8.4 [6.2;12.1]	<0.001
Serum creatinine (μmol/L)	111 [88;146]	101 [82;128]	93 [78;114]	<0.001
eGFR (mL/min/1.73 m ²)	52 [37;60]	59 [44;62]	60 [54;69]	<0.001
NT-proBNP (ng/L)	3466 [1398;7861]	2212 [944;4810]	1208 [479;2936]	<0.001
NT-proBNP in SR	2823 [1039;7584]	1746 [601;4058]	921 [339;2479]	<0.001
NT-proBNP in AF/AFL	3953 [2022;8127]	2763 [1492;5043]	1789 [933;3578]	<0.001
Albumin (g/L)	31 [26;36]	36 [31;40]	38 [33;42]	<0.001
LDL-cholesterol (mmol/L)	2.1 [1.6;2.7]	2.1 [1.6;2.9]	2.3 [1.7;3.0]	0.003
HDL-cholesterol (mmol/L)	1.06 [0.83;1.34]	1.09 [0.90;1.35]	1.08 [0.86;1.33]	0.19
Glucose (mmol/L)	6.4 [5.4;8.1]	6.3 [5.4;8.3]	6.1 [5.2;8.1]	0.015

Data shown as median [IQR] or n (%). Significant *P*-values are bold-printed. Abbreviations: ACEi, angiotensin-converting enzyme inhibitor; AF, atrial fibrillation; AFL, atrial flutter; ARB, angiotensin receptor blocker; BMI, body mass index; BP, blood pressure; CABG, coronary artery bypass graft; COPD, chronic obstructive pulmonary disease; CKD, chronic kidney disease; eGFR, estimated glomerular filtration rate; HDL, high-density lipoprotein; HF, heart failure; HFmEF, heart failure with mildly reduced ejection fraction; HFpEF, heart failure with preserved ejection fraction; HFrEF, heart failure with reduced ejection fraction; IQR, interquartile range; JVP, jugular venous pressure; LDL, low-density lipoprotein; LVEF, left ventricular ejection fraction; MRA, mineralocorticoid receptor antagonist; NT-proBNP, N-terminal pro-B-type natriuretic peptide; NYHA, New York Heart Association; PAVD, peripheral arterial vascular disease; PCI, percutaneous coronary intervention; SR, sinus rhythm.

Patients within the lowest tertile were older (75 vs 69 years old, $P<0.001$), more often female (36% vs 23%, $P<0.001$), had less frequent an ischemic etiology of HF (56 vs 64%, $P<0.001$) and shorter duration of HF diagnosis (median 10 vs 15 months, $P=0.003$), compared with patients within the highest tertile of free thiol levels. Patients within the lowest tertile experienced more signs and symptoms of HF, had more advanced NYHA classes and higher NT-proBNP levels ($P<0.001$ for all). Baseline characteristics are also presented for both cohorts separately (**Supplementary Table 1** and **2**). The distribution of characteristics across the free thiols tertiles within the individual cohorts was quite comparable to the distribution in the combined study population.

Table 2 | Clinical characteristics and laboratory values associated with serum free thiols

	Age- and sex-adjusted				Multivariable ^a		
	n	Std β	SE	P-value	Std β	SE	P-value
Age	3802	-0.22	0.02	<0.001	-0.12	0.02	<0.001
Female sex	3802	-0.08	0.03	<0.001	-0.08	0.02	<0.001
<i>Clinical characteristics</i>							
BMI	3734	0.01	0.02	0.90			
Systolic BP	3774	0.09	0.02	<0.001	0.04	0.02	0.012
Diastolic BP	3774	0.07	0.02	<0.001			
Heart rate	3763	-0.07	0.02	<0.001			
<i>HF characteristics</i>							
Ischemic etiology	3257	0.12	0.04	<0.001			
Years since HF diagnosis	1722	0.05	0.02	0.026			
Inpatient at enrolment	3802	-0.27	0.03	<0.001			
ACEi/ARB use at baseline	3802	0.09	0.04	<0.001			
<i>HF Signs and symptoms</i>							
NYHA class III/IV ^b	3737	-0.15	0.03	<0.001			
Peripheral oedema	3252	-0.15	0.03	<0.001	-0.08	0.03	<0.001
Elevated JVP	2933	-0.09	0.04	<0.001			
Hepatomegaly	3640	-0.11	0.05	<0.001			
Pulmonary congestion	3668	-0.17	0.03	<0.001	-0.04	0.03	0.022
<i>Medical history</i>							
Anaemia	3704	-0.13	0.03	<0.001			
Atrial fibrillation	3788	-0.04	0.03	0.018			
Hypertension	3787	0.01	0.03	0.63			
COPD	3787	-0.02	0.04	0.23			
History of renal disease	3779	-0.13	0.03	<0.001	-0.05	0.04	0.013
Stroke	3786	-0.007	0.05	0.65			
PCI	3786	0.06	0.04	<0.001	0.05	0.04	0.003
PAVD	3761	0.06	0.04	<0.001	0.07	0.04	<0.001
<i>Laboratory parameters</i>							
Hemoglobin	3704	0.08	0.02	<0.001			
Leukocytes	3505	-0.06	0.02	<0.001			
C-reactive protein	2093	-0.16	0.02	<0.001			
Glucose	3144	-0.01	0.02	0.53			
LDL-cholesterol	2014	0.02	0.02	0.42			
Sodium	3750	0.09	0.02	<0.001			
Potassium	3741	0.02	0.02	0.25			
Albumin	3691	0.35	0.01	<0.001	0.32	0.02	<0.001
eGFR	3790	0.18	0.02	<0.001	0.08	0.02	<0.001
Creatinine	3792	-0.20	0.02	<0.001			
Urea	3523	-0.25	0.02	<0.001	-0.11	0.02	<0.001
NT-proBNP	3654	-0.25	0.02	<0.001	-0.09	0.02	<0.001
NT-proBNP sinus	1921	-0.23	0.02	<0.001			
NT-proBNP AF	1169	-0.27	0.03	<0.001			

Significant P-values are bold-printed

^a n=2783, Adjusted R²=0.276

^b compared to NYHA I/II as reference group

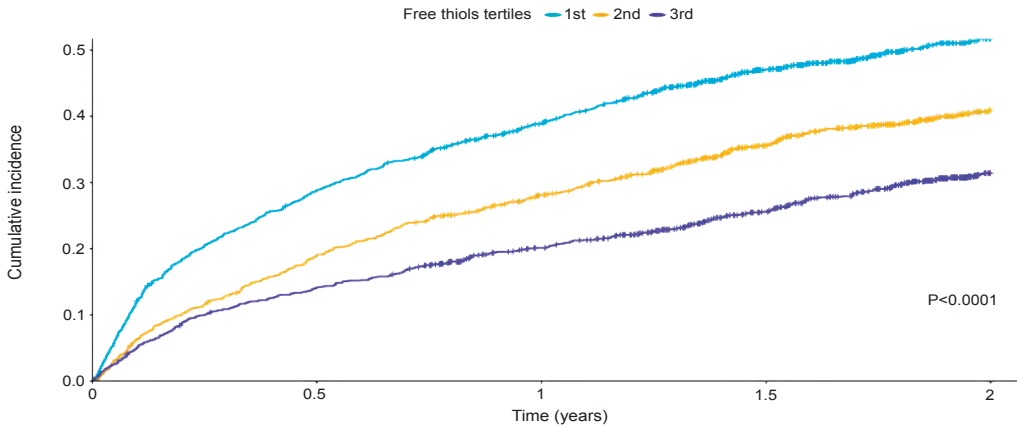
Abbreviations: ACEi, angiotensin-converting enzyme inhibitor; AF, atrial fibrillation; ARB, angiotensin receptor blocker; BMI, body mass index; BP, blood pressure; COPD, chronic obstructive pulmonary disease; eGFR, estimated glomerular filtration rate; JVP, jugular venous pressure; LDL, low-density lipoprotein; NT-proBNP, N-terminal pro-B-type natriuretic peptide; NYHA, New York Heart Association; PAVD, peripheral arterial vascular disease; PCI, percutaneous coronary intervention.

Associations between free thiol concentration and age, sex, signs and symptoms of HF and NT-proBNP were also observed in regression analyses (**Table 2**). Moreover, lower free thiol levels were associated with lower systolic and diastolic blood pressure, enrolment in the BIOSTAT-CHF cohort as an inpatient (instead of at the outpatient clinic), and the absence of treatment with an angiotensin-converting enzyme inhibitor (ACEi) or angiotensin receptor blocker (ARB). Furthermore, (laboratory parameters of) other diseases, including anemia and CKD were associated with lower levels of serum free thiols. Lower albumin, higher age and higher urea and NT-proBNP were the strongest determinants of lower free thiol concentration ($P < 0.001$ for all; **Table 2**).

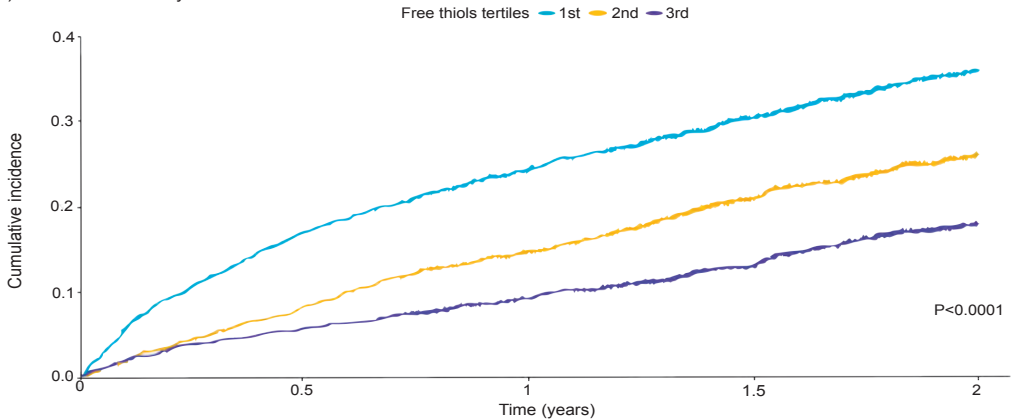
Serum free thiols and follow-up outcomes

Median follow-up time of the combined study population was 545 [IQR 255-730] days. In the index cohort, median follow-up time was 553 [IQR 253-730] days, and for patients in the validation cohort the median follow-up time was 517 [266-730] days. During two years of follow-up, 932 (24.5%) patients died, of which 594 (64%) due to a cardiovascular cause, and 908 (23.9%) patients were hospitalized for HF. The composite endpoint of all-cause mortality and HF hospitalization occurred in 1,475 (38.8%) patients. Incidences of the composite outcome, as well as secondary outcome, differed significantly across tertiles (log-rank test: $P < 0.001$), and occurred most frequent in the lowest tertile of serum free thiol levels (**Figure 1**).

A) All-cause mortality or heart failure hospitalization



B) All-cause mortality

**Figure 1 | Cumulative incidence curves for clinical outcomes**

Cumulative incidence curves for the composite endpoint of all-cause mortality or heart failure-related hospitalizations at 2 years (A) and all-cause mortality at 2 years (B). Patients within the tertile with the lowest free thiol concentrations (1st tertile, indicated in light blue) had a significantly higher incidence of the composite endpoint and all-cause mortality alone compared with patients with higher serum free thiol concentrations (2nd and 3rd tertile, in yellow and purple respectively) ($P < 0.001$).

In Cox regression analyses, lower levels of free thiols were associated with adverse disease outcome, also after adjustment for factors included in the BIostat risk model [Hazard Ratio (HR) per SD decrease in free thiols: 1.058, 95% confidence interval (CI): 1.001 – 1.118, $P=0.046$ for the composite endpoint; **Table 3**]. Lower free thiol concentrations were also independently associated with higher rates of all-cause mortality [HR per SD decrease: 1.253, 95% CI: 1.171 – 1.341, $P<0.001$] and cardiovascular mortality [HR per SD decrease: 1.182, 95% CI: 1.086 – 1.288, $P<0.001$].

Table 3 | Hazard ratios for serum free thiol concentrations in predicting clinical endpoints

	Composite endpoint HR per SD free thiol decrease (95% CI)	P-value	All-cause mortality HR per SD free thiol decrease (95% CI)	P-value	Cardiovascular mortality ^c HR per SD free thiol decrease (95% CI)	P-value
Univariable	1.351 (1.283 – 1.422)	<0.001	1.466 (1.374 - 1.565)	<0.001	1.410 (1.300 – 1.530)	<0.001
Age- and sex-adjusted	1.294 (1.227 – 1.365)	<0.001	1.381 (1.291 – 1.477)	<0.001	1.330 (1.225 – 1.450)	<0.001
BIOSTAT-CHF risk model	1.058 ^a (1.001 - 1.118)	0.046	1.253 ^b (1.171 – 1.341)	<0.001	1.182 ^b (1.086 – 1.288)	<0.001

Significant P-values are bold-printed

Abbreviations: CI, confidence interval; HF, heart failure; HR, hazard ratio; SD, standard deviation.

^a BIOSTAT-CHF risk model for composite endpoint (all-cause mortality & HF hospitalization): age, heart failure hospitalization in the year before inclusion, edema, N-terminal pro-B-type natriuretic peptide, systolic blood pressure, hemoglobin, high-density lipoprotein levels, serum sodium concentration and failure to prescribe a beta-blocker

^b BIOSTAT-CHF risk model for predicting mortality: age, blood urea nitrogen, NT-proBNP, hemoglobin and the use of a beta-blocker at time of inclusion.

^c Non-cardiovascular mortality was used as competing risk

Subgroup analyses

Pre-defined subgroup analyses on the primary endpoint and on all-cause mortality were performed for age, sex, HF type, ischemic origin, NYHA class and history of CKD. No significant subgroup interactions were observed. (Figure 2; Supplementary Table 3).

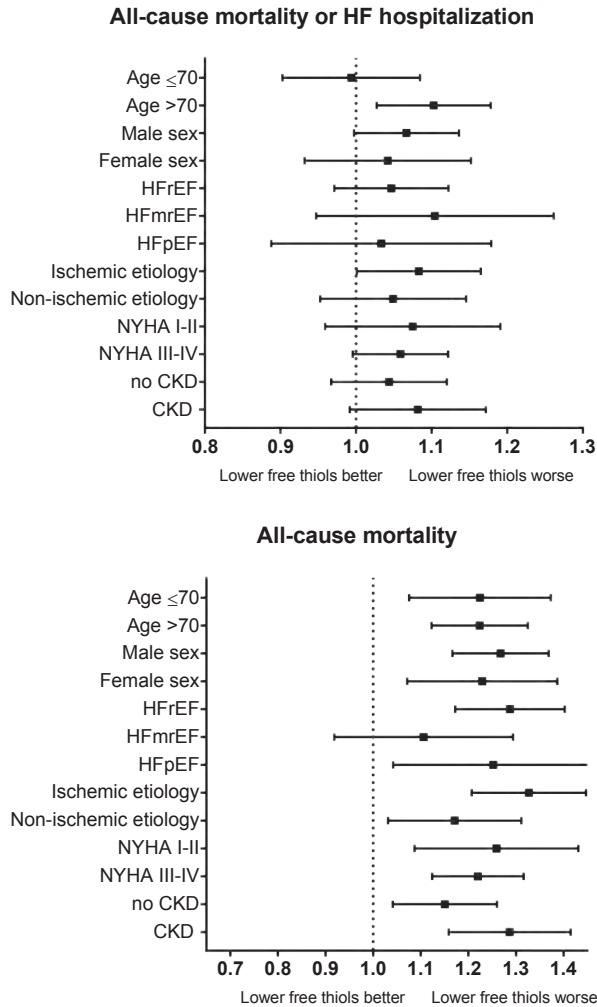
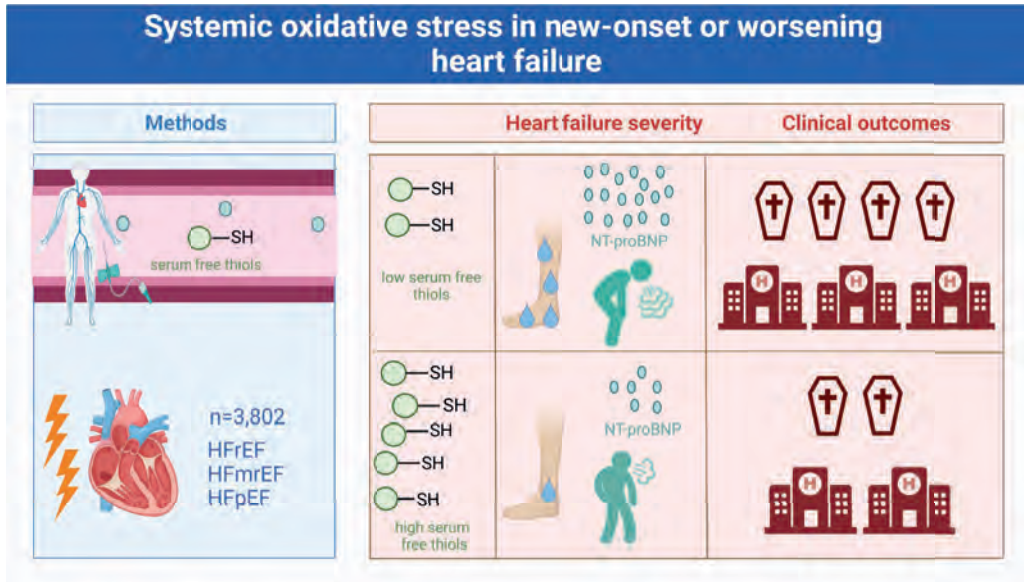


Figure 2 | Subgroup analyses on clinical endpoints

Forest plot depicting Hazard ratios for the composite endpoint of all-cause mortality or heart failure-related hospitalization and all-cause mortality alone during a 2-year follow-up, per SD decrease in serum free thiols, across pre-specified subgroups. All Cox proportional hazards models were adjusted for the corresponding BIOSTAT-CHF risk model. No significant subgroup interactions were observed. Abbreviations: CKD, chronic kidney disease; HF, heart failure; HFmrEF, heart failure with mildly reduced ejection fraction; HFpEF, heart failure with preserved ejection fraction; HFrEF, heart failure with reduced ejection fraction; NYHA, New York Heart Association; SD, standard deviation.

DISCUSSION

This study demonstrates that lower serum concentrations of free thiols, reflecting increased oxidative stress, are associated with greater HF severity and worse outcome for patients with new-onset or worsening HF (**Central illustration**). Our data provides rationale for future mechanistic studies on the role of free thiols in HF, and for studies evaluating effects of free thiol modulation for modifying disease outcomes for patients with HF.



Central illustration | Associations of serum free thiol concentrations with heart failure severity and outcomes

Serum free thiol concentrations were detected in 3,802 patients with new-onset or worsening heart failure. Lower serum free thiol concentration, which are reflective of higher oxidative stress, were associated with more advanced heart failure and adverse prognosis during a 2-years follow-up. Abbreviations: HF_mrEF, heart failure with mildly reduced ejection fraction; HF_pEF, heart failure with preserved ejection fraction; HF_rEF, heart failure with reduced ejection fraction.

Extracellular free thiols are critically involved in redox signaling, but also possess a strong antioxidant buffering capacity to a variety of reactive species.⁷ Under conditions of oxidative stress, the circulating free thiol pool (reduced thiols with -SH group) scavenge ROS, leading to the oxidation of thiols and the formation of disulphide bonds. Therefore, measurement of the reduced i.e. free thiol pool is a simple, direct and robust method to systemically assess the degree of oxidative stress.⁸

Depletion of the free thiol pool has been observed and linked to disease severity in a variety of non-cardiovascular and cardiovascular diseases before, including anemia, diabetes mellitus, inflammatory bowel disease, kidney disease and myocardial infarction,^{8,9,22–24} which was also investigated and confirmed for anemia and kidney disease in present study. In small exploratory studies including 120 and 101 patients with chronic HF, associations between serum free thiol concentrations and increased HF severity,^{25,26} and poorer clinical outcomes were suggested.²⁶ We substantiate previous work and extended upon this studies in several ways. Our sample size was almost 40 times larger reducing the risk of a type 1 error. Our study also generalized the link to HF by including patients with HFpEF, whereas the previous studies were limited to patients with a LVEF of <45%. Furthermore, our patient population consisted of less stable patients with new-onset or worsening HF on suboptimal pharmacological treatment, which were possibly more subjected to increased levels of oxidative stress. We observed robust and independent association between free thiol levels and disease outcomes, whereas the previous studies were underpowered to perform multivariable analyses on outcome. Our findings are consistent with the previous prognostic value of free thiols in a general population-based cohort.^{27,28} In the present study, we did not observe significant effect modifications between free thiols and disease outcomes by predefined subgroups.

Lower free thiol levels were consistently associated with signs of systemic or pulmonary congestion and natriuretic peptide levels. Other HF-characteristics that were associated with lower free thiol levels were non-ischemic etiology, shorter duration of HF, inpatient study enrolment, and the absence of treatment with an ACEi or ARB. Differences in oxidative stress between ischemic vs dilated cardiomyopathy have been previously attributed to enhanced ROS-induced mitochondrial instability in the latter.²⁹ The activity of the anti-oxidant thioredoxin system was also higher in dilated cardiomyopathy, but it has been postulated this might be an indirect reflection of excessive oxidative stress.^{29,30} As for the time from HF diagnosis, we speculate that free thiols might be lower in the early phase of HF due to enhancement of ROS by catecholamines,³¹ and higher in a later phase due to the effect of pharmacological treatment. Participants that were enrolled as inpatients (acute HF) had likely more congestion and oxidative stress, resulting in lower free thiol levels. The association between the use of an ACEi or ARB might be associated with antioxidant effects of this class of therapy,^{32,33} or might be coincidental due to the BIOSTAT-CHF design, which required participants to be on suboptimal pharmacological treatment. We cannot exclude that free thiol concentrations were also influenced by other factors, for example the production of thiol-containing molecules by the liver.⁷

Therapeutic potential

Associations between oxidative stress markers with HF severity and outcome have been established before, for example for 8-OHdG, malondialdehyde and uric acid.^{34,35} However, compared with other oxidative stress markers, free thiols constitute the central hubs of inter-organ redox communication,³⁶ whereas malondialdehyde is merely a damage marker representing oxidative stress-induced lipid peroxidation. Moreover, free thiols are amendable for therapeutic modulation, for example by N-acetylcysteine or glutathione administration.^{10,37,38} Our findings support the notion that thiol supplementation may have therapeutic potential in HF if a causal role of free thiols in the pathophysiology of HF can be addressed. Prior experimental studies showed that administration of N-acetylcysteine resulted in reduced oxidative stress and improved cardiac function in models with HF or ischemic injury.^{10-13,39} Beneficial effects of such thiol-containing drugs were also observed in patients with COVID-19.⁴⁰ Thiol modulating studies in patients with HF are scarce and predominantly small or restricted to nitrate tolerance.^{14,16,41} It has been suggested that administration of thiol-targeted antioxidants should be reserved for individuals with profound thiol depletion and incautious thiol supplementation could potentially disturb physiological redox signaling processes.⁴² Therefore, more mechanistic studies and careful evaluation of treatment effects in patients with lower free thiols, are warranted. In this respect, circulating free thiols may aid in patient stratification in order to restore the systemic and local redox balance following a redox precision medicine approach.

Strengths and limitations

Strengths of our study include the large sample size, the phenotypically well characterized patient population, combined with a systematic follow-up. Limitations of our study include the geographic restrictions of our cohort recruiting mainly Caucasians, since some studies suggest ethnic and geographic differences in oxidative stress-related gene expression and antioxidant status.^{43,44} We also did not have data on dietary intake or total serum protein levels to make further adjustment for serum free thiol level.^{7,36} Moreover, participants were enrolled back in 2010-2012 and HF treatments have advanced since then. At last, our results do not proof causality or mechanisms of free thiol depletion.

CONCLUSIONS

In patients with new-onset or worsening HF lower serum free thiol concentrations, indicative of increased oxidative stress, are associated with greater HF severity and a poorer prognosis. If future studies prove a causal role of free thiols in the progression of HF, it might be of interest to study whether free thiol modulation, especially in patients with poor redox status, might improve clinical outcomes.

REFERENCES

- 1 van der Pol A, van Gilst WH, Voors AA, van der Meer P. Treating oxidative stress in heart failure: past, present and future. *Eur J Heart Fail.* 2019;21(4):425–35.
- 2 van 't Erve TJ, Kadiiska MB, London SJ, Mason RP. Classifying oxidative stress by F(2)-isoprostane levels across human diseases: A meta-analysis. *Redox Biol.* 2017;12:582–99.
- 3 Sies H. Oxidative stress: a concept in redox biology and medicine. *Redox Biol.* 2015;4:180–3.
- 4 Takimoto E, Kass DA. Role of oxidative stress in cardiac hypertrophy and remodeling. *Hypertension.* 2007;49(2):241–8.
- 5 Hage C, Löfgren L, Michopoulos F, et al. Metabolomic Profile in Patients with Heart Failure With Preserved Ejection Fraction Versus Patients With Heart Failure With Reduced Ejection Fraction. *J Card Fail.* 2020;26(12):1050–9.
- 6 Münzel T, Gori T, Keaney JFJ, Maack C, Daiber A. Pathophysiological role of oxidative stress in systolic and diastolic heart failure and its therapeutic implications. *Eur Heart J.* 2015;36(38):2555–64.
- 7 Turell L, Radi R, Alvarez B. The thiol pool in human plasma: the central contribution of albumin to redox processes. *Free Radic Biol Med.* 2013;65:244–53.
- 8 Banne AF, Amiri A, Pero RW. Reduced level of serum thiols in patients with a diagnosis of active disease. *J Anti Aging Med.* 2003;6(4):327–34.
- 9 Bourgonje AR, Gabriëls RY, de Borst MH, et al. Serum Free Thiols Are Superior to Fecal Calprotectin in Reflecting Endoscopic Disease Activity in Inflammatory Bowel Disease. *Antioxidants.* 2019;8(9):351.
- 10 Ferrari R, Ceconi C, Curello S, et al. Oxygen free radicals and myocardial damage: protective role of thiol-containing agents. *Am J Med.* 1991;91(3C):955–1055.
- 11 Adamy C, Mulder P, Khouzami L, et al. Neutral sphingomyelinase inhibition participates to the benefits of N-acetylcysteine treatment in post-myocardial infarction failing heart rats. *J Mol Cell Cardiol.* 2007;43(3):344–53.
- 12 Bourraindeloup M, Adamy C, Candiani G, et al. N-acetylcysteine treatment normalizes serum tumor necrosis factor-alpha level and hinders the progression of cardiac injury in hypertensive rats. *Circulation.* 2004;110(14):2003–9.
- 13 Dlodla P V, Dias SC, Obonye N, et al. A Systematic Review on the Protective Effect of N-Acetyl Cysteine Against Diabetes-Associated Cardiovascular Complications. *Am J Cardiovasc Drugs.* 2018;18(4):283–98.
- 14 Mehra A, Shotan A, Ostrzega E, et al. Potentiation of isosorbide dinitrate effects with N-acetylcysteine in patients with chronic heart failure. *Circulation.* 1994;89(6):2595–600.
- 15 Pasupathy S, Tavella R, Grover S, et al. Early Use of N-acetylcysteine With Nitrate Therapy in Patients Undergoing Primary Percutaneous Coronary Intervention for ST-Segment-Elevation Myocardial Infarction Reduces Myocardial Infarct Size (the NACIAM Trial). *Circulation.* 2017;136(10):894–903.
- 16 Camuglia AC, Maeder MT, Starr J, Farrington C, Kaye DM. Impact of N-acetylcysteine on endothelial function, B-type natriuretic peptide and renal function in patients with the cardiorenal syndrome: a pilot cross over randomised controlled trial. *Heart Lung Circ.* 2013;22(4):256–9.
- 17 Voors AA, Anker SD, Cleland JG, et al. A systems BIOlogy Study to Tailored Treatment in Chronic Heart Failure: rationale, design, and baseline characteristics of BIOSTAT-CHF. *Eur J Heart Fail.* 2016;18(6):716–26.
- 18 Ponikowski P, Voors AA, Anker SD, et al. 2016 ESC Guidelines for the diagnosis and treatment of acute and chronic heart failure: The Task Force for the diagnosis and treatment of acute and chronic heart failure of the European Society of Cardiology (ESC). *Eur Heart J.* 2016;37(27):2129–200.
- 19 Ellman GL. Tissue sulfhydryl groups. *Arch Biochem Biophys.* 1959;82(1):70–7.
- 20 Hu ML, Louie S, Cross CE, Motchnik P, Halliwell B. Antioxidant protection against hypochlorous acid in human plasma. *J Lab Clin Med.* 1993;121(2):257–62.

- 21 Voors AA, Ouwerkerk W, Zannad F, et al. Development and validation of multivariable models to predict mortality and hospitalization in patients with heart failure. *Eur J Heart Fail.* 2017;19(5):627–34.
- 22 Boekhoud L, Koeze J, van der Slikke EC, et al. Acute Kidney Injury is Associated with Lowered Plasma-Free Thiol Levels. *Antioxidants.* 2020;9(11):1135.
- 23 Kundi H, Ates I, Kiziltunc E, et al. A novel oxidative stress marker in acute myocardial infarction; thiol/disulphide homeostasis. *Am J Emerg Med.* 2015;33(11):1567–71.
- 24 Bourgonje AR, Abdulle AE, Bourgonje MF, et al. Serum free sulfhydryl status associates with new-onset chronic kidney disease in the general population. *Redox Biol.* 2021;48:102211.
- 25 Radovanovic S, Savic-Radojevic A, Pljesa-Ercegovac M, et al. Markers of oxidative damage and antioxidant enzyme activities as predictors of morbidity and mortality in patients with chronic heart failure. *J Card Fail.* 2012;18(6):493–501.
- 26 Koning AM, Meijers WC, Pasch A, et al. Serum free thiols in chronic heart failure. *Pharmacol Res.* 2016;111:452–8.
- 27 Abdulle AE, Bourgonje AR, Kieneker LM, et al. Serum free thiols predict cardiovascular events and all-cause mortality in the general population: a prospective cohort study. *BMC Med.* 2020;18(1):130.
- 28 Schöttker B, Brenner H, Jansen EHJM, et al. Evidence for the free radical/oxidative stress theory of ageing from the CHANCES consortium: a meta-analysis of individual participant data. *BMC Med.* 2015;13:300.
- 29 Neidhardt S, Garbade J, Emrich F, et al. Ischemic Cardiomyopathy Affects the Thioredoxin System in the Human Myocardium. *J Card Fail.* 2019;25(3):204–12.
- 30 Kishimoto C, Shioji K, Nakamura H, et al. Serum thioredoxin (TRX) levels in patients with heart failure. *Jpn Circ J.* 2001;65(6):491–4.
- 31 Costa VM, Carvalho F, Bastos ML, et al. Contribution of catecholamine reactive intermediates and oxidative stress to the pathologic features of heart diseases. *Curr Med Chem.* 2011;18(15):2272–314.
- 32 Münzel T, Gori T, Bruno RM, Taddei S. Is oxidative stress a therapeutic target in cardiovascular disease? *Eur Heart J.* 2010;31(22):2741–8.
- 33 Williams HC, Griending KK. NADPH oxidase inhibitors: new antihypertensive agents? *J Cardiovasc Pharmacol.* 2007;50(1):9–16.
- 34 Romuk E, Wojciechowska C, Jacheć W, et al. Malondialdehyde and Uric Acid as Predictors of Adverse Outcome in Patients with Chronic Heart Failure. *Oxid Med Cell Longev.* 2019;2019:9246138.
- 35 Di Minno A, Turnu L, Porro B, et al. 8-Hydroxy-2-deoxyguanosine levels and heart failure: A systematic review and meta-analysis of the literature. *Nutr Metab Cardiovasc Dis.* 2017;27(3):201–8.
- 36 Cortese-Krott MM, Koning A, Kuhnle GGC, et al. The Reactive Species Interactome: Evolutionary Emergence, Biological Significance, and Opportunities for Redox Metabolomics and Personalized Medicine. *Antioxid Redox Signal.* 2017;27(10):684–712.
- 37 Deneke SM. Thiol-based antioxidants. *Curr Top Cell Regul.* 2000;36:151–80.
- 38 Atkuri KR, Mantovani JJ, Herzenberg LA, Herzenberg LA. N-Acetylcysteine—a safe antidote for cysteine/glutathione deficiency. *Curr Opin Pharmacol.* 2007;7(4):355–9.
- 39 Parra-Flores P, Riquelme JA, Valenzuela-Bustamante P, et al. The Association of Ascorbic Acid, Deferoxamine and N-Acetylcysteine Improves Cardiac Fibroblast Viability and Cellular Function Associated with Tissue Repair Damaged by Simulated Ischemia/Reperfusion. *Antioxidants.* 2019;8(12):614.
- 40 Cazzola M, Rogliani P, Salvi SS, Ora J, Matera MG. Use of Thiols in the Treatment of COVID-19: Current Evidence. *Lung.* 2021;199(4):335–43.
- 41 Lang NN, Ahmad FA, Cleland JG, et al. Haemodynamic effects of the nitroxyl donor cimlanod (BMS-986231) in chronic heart failure: a randomized trial. *Eur J Heart Fail.* 2021;23(7):1147–55.
- 42 Andreadou I, Efentakis P, Frenis K, Daiber A, Schulz R. Thiol-based redox-active proteins as cardioprotective therapeutic agents in cardiovascular diseases. *Basic Res Cardiol.* 2021;116(1):44.

- 43 Sayanthooran S, Magana-Arachchi DN, Gunerathne L, Abeysekera TDJ, Sooriyapathirana SS. Upregulation of Oxidative Stress Related Genes in a Chronic Kidney Disease Attributed to Specific Geographical Locations of Sri Lanka. *Biomed Res Int.* 2016;2016:7546265.
- 44 Gut A, Shiel N, Kay PM, Segal I, Braganza JM. Heightened free radical activity in blacks with chronic pancreatitis at Johannesburg, South Africa. *Clin Chim Acta.* 1994;230(2):189–99.

SUPPLEMENTARY MATERIAL

Supplementary Table 1 | Baseline characteristics of the BIOSTAT-CHF index cohort according to tertiles of serum free thiols

	1st tertile n=726	2nd tertile n=725	3rd tertile n=725	P- value
Serum free thiols (μmol/L)	227 [190;258]	326 [304;348]	419 [392;458]	
	Full range (38-281)	Full range (281-369)	Full range (369-799)	
<i>Demographics</i>				
Age (years)	74.2 [65.7;79.8]	70.7 [62.1;78.8]	65.2 [56.6;74.1]	<0.001
Female sex	237 (33%)	208 (29%)	142 (20%)	<0.001
<i>Clinical characteristics</i>				
BMI (kg/m ²)	26.7 [23.6;30.5]	27.2 [23.9;30.5]	27.2 [24.5;30.9]	0.198
HF type				<0.001
HF _r EF	503 (78%)	521 (80%)	549 (84%)	
HF _m rEF	82 (13%)	81 (13%)	78 (12%)	
HF _p EF	64 (10%)	46 (7%)	24 (4%)	
Months since HF diagnosis	1 [0;12]	6 [0;46]	3 [0;53]	0.305
Ischemic etiology	304 (43%)	330 (46%)	319 (45%)	0.421
Inpatient enrolment	604 (83%)	520 (72%)	423 (58%)	<0.001
NYHA class				<0.001
I/II	207 (30%)	269 (38%)	332 (47%)	
III/VI	494 (71%)	431 (62%)	379 (53%)	
Systolic BP (mmHg)	120 [110;135]	120 [110;140]	120 [110;136]	0.019
Diastolic BP (mmHg)	70 [64;80]	73 [66;82]	76.0 [70;85]	<0.001
Heart rate (bpm)	77 [66;90]	76 [68;90]	75 [67;88]	0.854
LVEF (%)	30 [25;38]	30 [25;36]	30 [25;35]	0.038
<i>Signs and symptoms</i>				
Peripheral oedema	433 (67%)	352 (60%)	288 (51%)	<0.001
Elevated JVP	208 (39%)	169 (32%)	116 (23%)	<0.001
Hepatomegaly	127 (18%)	101 (14%)	81 (11%)	0.002
Pulmonary congestion	444 (63%)	393 (56%)	301 (43%)	<0.001
<i>Medical history</i>				
Anemia	304 (43%)	240 (35%)	220 (32%)	<0.001
Atrial fibrillation	369 (51%)	340 (47%)	282 (39%)	<0.001
Diabetes Mellitus	233 (32%)	235 (32%)	234 (32%)	0.991
COPD	139 (19%)	124 (17%)	112 (15%)	0.175
CKD	282 (39%)	186 (26%)	144 (20%)	<0.001
Hypertension	460 (63%)	459 (63%)	435 (60%)	0.318
PAVD	84 (12%)	81 (11%)	81 (11%)	0.963
Stroke	78 (11%)	73 (10%)	54 (7%)	0.076
PCI	128 (18%)	140 (19%)	179 (25%)	0.002
CABG	134 (19%)	133 (18%)	105 (15%)	0.073
<i>Medicines</i>				
Loop diuretics	723 (99%)	722 (99%)	719 (99%)	0.585
Loop diuretic dose (mg furosemide equivalent)	40 [40;125]	40 [40;100]	40 [40;80]	<0.001
ACEi/ARB	491 (68%)	517 (71%)	556 (77%)	0.001
Beta-blocker	595 (82%)	604 (83%)	608 (84%)	0.609
Aldosteron antagonist	376 (52%)	382 (53%)	383 (53%)	0.912

Laboratory data

Hemoglobin (g/dL)	12.9 [11.6;14.1]	13.4 [12.0;14.5]	13.6 [12.2;14.8]	<0.001
Leukocytes (10 ⁹ /L)	7.8[6.3;9.8]	7.9 [6.6;9.6]	7.8 [6.4;9.4]	0.581
Sodium (mmol/L)	139 [136;142]	140 [137;142]	140 [137;142]	0.143
Potassium (mmol/L)	4.2 [3.8;4.6]	4.2 [3.9;4.6]	4.3 [3.9;4.6]	0.092
Urea (mmol/L)	13.6 [8.6; 22.5]	10.5 [7.3; 16.1]	9.8 [7.0; 15.3]	<0.001
Serum creatinine (μmol/L)	113 [90;150]	103 [82;128]	97 [80;116]	<0.001
eGFR (mL/min/1.73 m ²)	51 [35;68]	59 [45;77]	68 [52;84]	<0.001
NT-proBNP (ng/L)	3890 [1836; 8325]	2858 [1329;5386]	1910 [851;4052]	<0.001
Albumin (g/L)	29 [24;34]	32 [27;37]	36 [31;41]	<0.001
LDL-cholesterol (mmol/L)	2.2 [1.7; 3.0]	2.6 [1.9; 3.3]	2.6 [2.0; 3.3]	<0.001
HDL-cholesterol (mmol/L)	1.02 [0.83;1.30]	1.06 [0.88;1.32]	1.04 [0.85;1.30]	0.753
Glucose (mmol/L)	6.3 [5.4;7.8]	6.4 [5.4;8.0]	6.2 [5.4;8.0]	0.539

Data shown as median [IQR] or n (%). Significant P-values are bold-printed.

Abbreviations: ACEi, angiotensin-converting enzyme inhibitor; ARB, angiotensin receptor blocker; BMI, body mass index; BP, blood pressure; CABG, coronary artery bypass graft; COPD, chronic obstructive pulmonary disease; CKD, chronic kidney disease; eGFR, estimated glomerular filtration rate; HDL, high-density lipoprotein; HF, heart failure; HFmrEF, heart failure with mid-range ejection fraction; HFpEF, heart failure with preserved ejection fraction; HFrEF, heart failure with reduced ejection fraction; JVP, jugular venous pressure; LDL, low-density lipoprotein; LVEF, left ventricular ejection fraction; NT-proBNP, N-terminal pro-B-type natriuretic peptide; NYHA, New York Heart Association; PAVD, peripheral arterial vascular disease; PCI, percutaneous coronary intervention.

Supplementary Table 2 | Baseline characteristics of the BIOSTAT-CHF validation cohort according to tertiles of serum free thiols

	1st tertile n=542	2nd tertile n=542	3rd tertile n=542	P-value
Serum free thiols (µmol/L)	269 [236;296] Full range (59-317)	353 [337;371] Full range (317-388)	431 [406;461] Full range (388-645)	
<i>Demographics</i>				
Age (years)	78.2 [70.6;83.9]	75.9 [68.3;81.6]	70.8 [64.5;78.0]	<0.001
Female sex	215 (40%)	198 (37%)	146 (27%)	<0.001
<i>Clinical characteristics</i>				
BMI (kg/m ²)	27.5 [23.9;32.1]	28.0 [24.8;32.7]	28.5 [25.1;32.7]	0.051
HF type				0.580
HF _r EF	219 (44%)	234 (48%)	220 (46%)	
HF _m rEF	130 (26%)	123 (25%)	133 (28%)	
HF _p EF	150 (30%)	131 (27%)	127 (27%)	
Months since HF diagnosis	11 [0.2;48]	20 [2;63]	16 [2;58]	<0.001
Inpatient enrolment	377 (70%)	281 (52%)	216 (40%)	<0.001
Ischaemic etiology	354 (94%)	360 (94%)	339 (94%)	0.935
NYHA class				<0.001
I/II	163(30%)	221 (41%)	298 (55%)	
III/VI	379 (70%)	321 (59%)	243 (45%)	
Systolic BP (mmHg)	118 [106;136]	126 [113;141]	125 [112;144]	<0.001
Diastolic BP (mmHg)	65 [57;74]	69 [60;78]	70 [63;79]	<0.001
Heart rate (bpm)	73 [63;85]	70 [60;84]	72 [63;83]	0.210
LVEF (%)	41 [35;50]	40 [33;50]	40 [35;50]	0.269
<i>Signs and symptoms</i>				
Peripheral oedema	368 (76%)	300 (61%)	229 (49%)	<0.001
Elevated JVP	170 (37%)	131 (28%)	113 (25%)	<0.001
Hepatomegaly	24 (5%)	14 (3%)	16 (3%)	0.202
Pulmonary congestion	297 (58%)	230 (44%)	160 (31%)	<0.001
<i>Medical history</i>				
Anemia	274 (51%)	199 (37%)	130 (24%)	<0.001
Atrial fibrillation	244 (45%)	238 (44%)	229 (43%)	0.716
Diabetes Mellitus	190 (35%)	175 (32%)	166 (31%)	0.278
COPD	113 (21%)	95 (18%)	85 (16%)	0.079
CKD	319 (59%)	258 (48%)	161 (31%)	<0.001
Hypertension	319 (59%)	317 (59%)	306 (57%)	0.673
PAVD	103 (20%)	111 (21%)	137 (26%)	0.033
Stroke	114 (21%)	98 (18%)	83 (16%)	0.052
PCI	92 (17%)	102 (19%)	113 (21%)	0.265
CABG	78 (14%)	99 (18%)	106 (20%)	0.067
<i>Medicines</i>				
Loop diuretics	535 (99%)	535 (99%)	537 (99%)	0.808
Loop diuretic dose (mg furosemide equivalent)	80 [40;100]	40.0 [40;80]	40 [40;80]	<0.001
ACEi/ARB	359 (66%)	374 (69%)	421 (78%)	<0.001
Beta-blocker	372 (69%)	394 (73%)	418 (77%)	0.007
Aldosteron antagonist	170 (31%)	179 (33%)	175 (32%)	0.842

Laboratory data

Hemoglobin (g/dL)	12.5 [11.1;13.8]	13.2 [11.8;14.5]	13.9 [12.6;15.1]	<0.001
Leukocytes (10 ⁹ /L)	7.7 [6.1;9.6]	7.4 [6.1;9.1]	7.3 [6.1;8.9]	0.019
Sodium (mmol/L)	139 [136;141]	140 [137;141]	140 [138;141]	<0.001
Potassium (mmol/L)	4.3 [4.0;4.6]	4.3 [4.0;4.6]	4.3 [4.0;4.6]	0.857
Urea (mmol/L)	10.0 [7.5;14.9]	8.6 [6.8;11.6]	7.5 [5.9;9.8]	<0.001
Serum creatinine (μmol/L)	108 [84;142]	96 [80;124]	89 [76;111]	<0.001
eGFR (mL/min/1.73 m ²)	54 [38;60]	60 [44;60]	60 [55;60]	<0.001
NT-proBNP (pg/mL)	2448 [958;6447]	1473 [554;3210]	828 [294;1863]	<0.001
Albumin (g/L)	35 [31;39]	39 [35;43]	39 [36;43]	<0.001
LDL-cholesterol (mmol/L)	1.9 [1.5;2.3]	2.0 [1.5;2.5]	2.0 [1.5;2.6]	0.080
HDL-cholesterol (mmol/L)	1.09 [0.86;1.37]	1.09 [0.90;1.35]	1.10 [0.89;1.40]	0.652
Glucose (mmol/L)	6.7 [5.5;8.7]	6.2 [5.2;8.3]	5.9 [5.1;8.2]	0.001

Data shown as median [IQR] or n (%). Significant P-values are bold-printed.

Abbreviations: ACEi, angiotensin-converting enzyme inhibitor; ARB, angiotensin receptor blocker; BMI, body mass index; BP, blood pressure; CABG, coronary artery bypass graft; COPD, chronic obstructive pulmonary disease; CKD, chronic kidney disease; eGFR, estimated glomerular filtration rate; HDL, high-density lipoprotein; HF, heart failure; HFmrEF, heart failure with mid-range ejection fraction; HFpEF, heart failure with preserved ejection fraction; HFrEF, heart failure with reduced ejection fraction; JVP, jugular venous pressure; LDL, low-density lipoprotein; LVEF, left ventricular ejection fraction; NT-proBNP, N-terminal pro-B-type natriuretic peptide; NYHA, New York Heart Association; PAVD, peripheral arterial vascular disease; PCI, percutaneous coronary intervention.

Supplementary Table 3 | Risk model-adjusted hazard ratios of serum free thiols in predicting the composite endpoint (all-cause mortality or heart failure hospitalization) and all-cause mortality in 2 years across pre-specified subgroups

	n	Composite endpoint ^c HR per SD decrease (95% CI)	P for interaction	All-cause mortality ^d HR per SD decrease (95% CI)	P for interaction
<i>Age</i>			0.34		0.25
≤70	1592	0.991 (0.904 – 1.086)		1.218 (1.079 – 1.376)	
>70	2203	1.101 (1.028 – 1.179)		1.221 (1.124 – 1.326)	
<i>Sex</i>			0.62		0.79
Male	2650	1.065 (0.998 – 1.137)		1.265 (1.168 – 1.370)	
Female	1145	1.038 (0.934 – 1.154)		1.222 (1.075 – 1.390)	
<i>HF groups</i>			0.76 ^a		0.16 ^a
HFrEF	2246	1.045 (0.972 – 1.123)	0.48 ^b	1.284 (1.174 – 1.404)	0.49 ^b
HFmrEF	627	1.097 (0.951 – 1.265)		1.095 (0.924 – 1.299)	
HFpEF	542	1.027 (0.891 – 1.182)		1.241 (1.048 – 1.468)	
<i>Ischemic etiology</i>			0.82		0.71
Yes	2000	1.081 (1.002 – 1.166)		1.323 (1.209 – 1.449)	
No	1251	1.046 (0.954 – 1.147)		1.166 (1.034 – 1.314)	
<i>NYHA class</i>			0.18		0.29
I-II	1488	1.071 (0.961 – 1.193)		1.251 (1.091 – 1.435)	
III-IV	2242	1.054 (0.988 – 1.124)		1.218 (1.125 – 1.317)	
<i>History of renal disease</i>			0.71		0.64
Yes	1347	1.079 (0.993 – 1.173)		1.282 (1.161 – 1.417)	
No	2425	1.042 (0.968 – 1.121)		1.147 (1.043 – 1.262)	

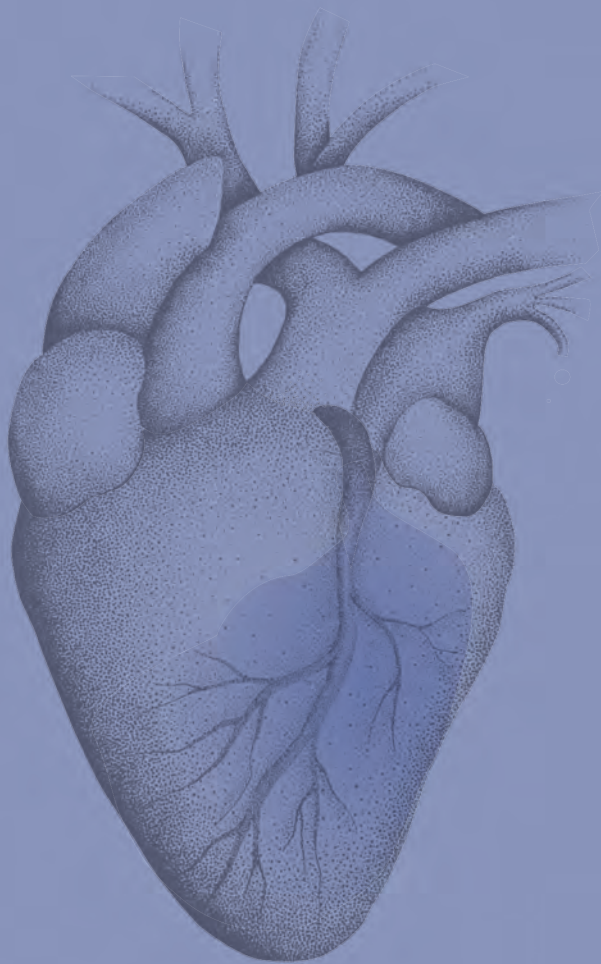
^a HFmrEF compared to HFrEF

^b HFpEF compared to HFrEF

^c BIOSTAT-CHF risk model for composite endpoint (all-cause mortality & HF hospitalization): age, heart failure hospitalization in the year before inclusion, edema, N-terminal pro-B-type natriuretic peptide, systolic blood pressure, haemoglobin, high-density lipoprotein levels, serum sodium concentration and failure to prescribe a beta-blocker.

^d BIOSTAT-CHF risk model for predicting all-cause mortality: age, blood urea nitrogen, NT-proBNP, haemoglobin and the use of a beta-blocker at time of inclusion.

Abbreviations: CI, confidence interval; HF, heart failure; HFmrEF, heart failure with mildly reduced ejection fraction; HFpEF, heart failure with preserved ejection fraction; HFrEF, heart failure with reduced ejection fraction; HR, hazard ratio; NYHA, New York Heart Association; SD standard deviation.



PART II

**Safety and efficacy of sodium
thiosulfate in acute
myocardial infarction**

