

University of Groningen

Identification of potential vaccine targets in livestock-associated *Staphylococcus aureus*

Vera Murguia, Elias

DOI:
[10.33612/diss.603997933](https://doi.org/10.33612/diss.603997933)

IMPORTANT NOTE: You are advised to consult the publisher's version (publisher's PDF) if you wish to cite from it. Please check the document version below.

Document Version
Publisher's PDF, also known as Version of record

Publication date:
2023

[Link to publication in University of Groningen/UMCG research database](#)

Citation for published version (APA):
Vera Murguia, E. (2023). *Identification of potential vaccine targets in livestock-associated Staphylococcus aureus*. [Thesis fully internal (DIV), University of Groningen]. University of Groningen. <https://doi.org/10.33612/diss.603997933>

Copyright

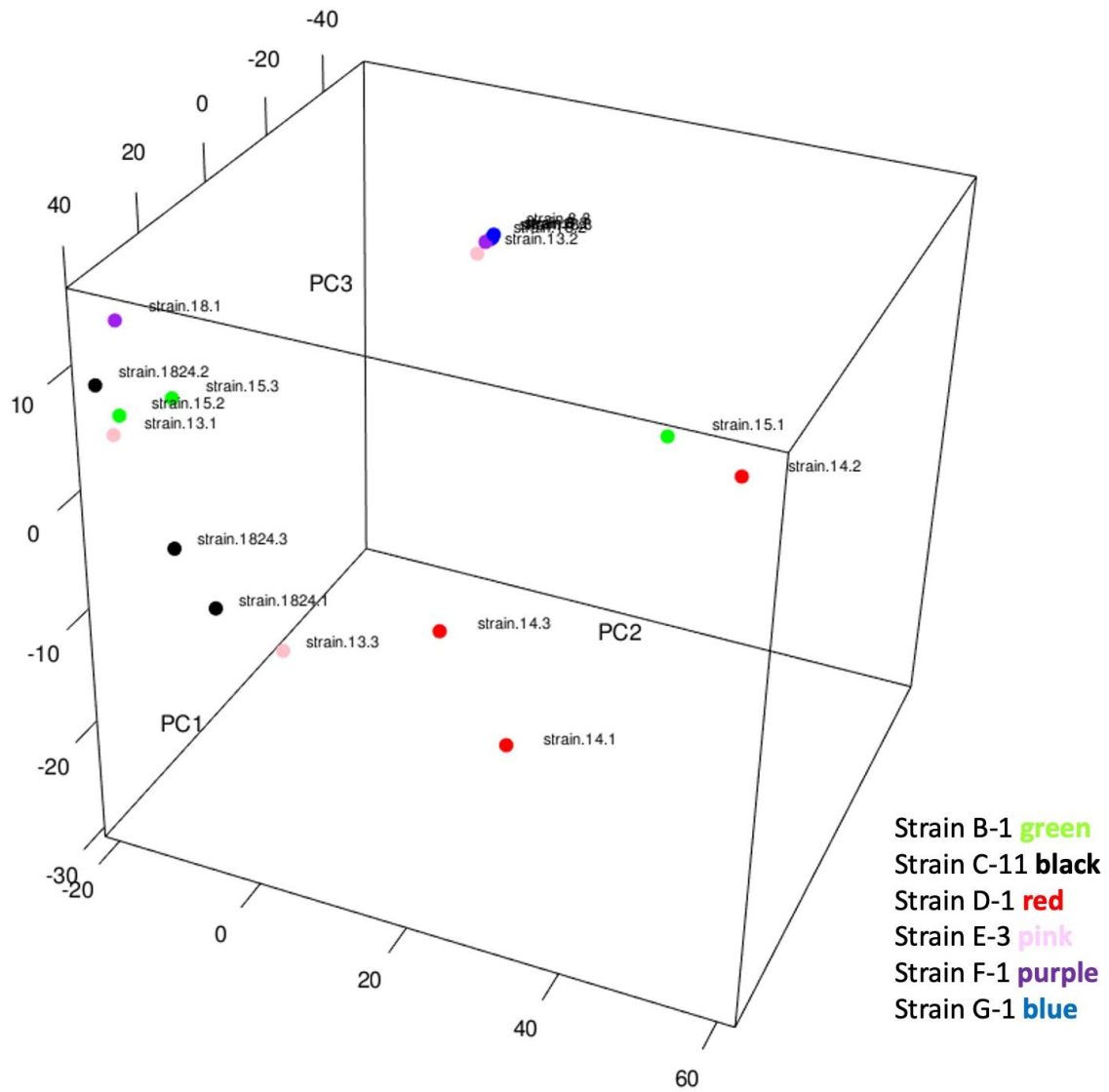
Other than for strictly personal use, it is not permitted to download or to forward/distribute the text or part of it without the consent of the author(s) and/or copyright holder(s), unless the work is under an open content license (like Creative Commons).

The publication may also be distributed here under the terms of Article 25fa of the Dutch Copyright Act, indicated by the "Taverne" license. More information can be found on the University of Groningen website: <https://www.rug.nl/library/open-access/self-archiving-pure/taverne-amendment>.

Take-down policy

If you believe that this document breaches copyright please contact us providing details, and we will remove access to the work immediately and investigate your claim.

Downloaded from the University of Groningen/UMCG research database (Pure): <http://www.rug.nl/research/portal>. For technical reasons the number of authors shown on this cover page is limited to 10 maximum.



Supplemental Fig. 2. Principal Component Analysis (PCA) of RNA-seq data (2730 genes) showing the coordinates representing the three biological replicates of the six *S. aureus* isolates from Mexican cows with mastitis. The RNA-seq analysis was performed on isolates grown in whey permeate medium, involving three biological replicates. Each measurement represents the average of 4 normalized technical replicates.