

University of Groningen

Gait characteristics as indicators of cognitive impairment in geriatric patients

Kikkert, Lisette Harma Jacobine

IMPORTANT NOTE: You are advised to consult the publisher's version (publisher's PDF) if you wish to cite from it. Please check the document version below.

Document Version

Publisher's PDF, also known as Version of record

Publication date:
2018

[Link to publication in University of Groningen/UMCG research database](#)

Citation for published version (APA):

Kikkert, L. H. J. (2018). *Gait characteristics as indicators of cognitive impairment in geriatric patients: Karakteristieken van het lopen als indicatoren van cognitieve achteruitgang in geriatrische patiënten*. [Thesis fully internal (DIV), University of Groningen]. University of Groningen.

Copyright

Other than for strictly personal use, it is not permitted to download or to forward/distribute the text or part of it without the consent of the author(s) and/or copyright holder(s), unless the work is under an open content license (like Creative Commons).

The publication may also be distributed here under the terms of Article 25fa of the Dutch Copyright Act, indicated by the "Taverne" license. More information can be found on the University of Groningen website: <https://www.rug.nl/library/open-access/self-archiving-pure/taverne-amendment>.

Take-down policy

If you believe that this document breaches copyright please contact us providing details, and we will remove access to the work immediately and investigate your claim.

Downloaded from the University of Groningen/UMCG research database (Pure): <http://www.rug.nl/research/portal>. For technical reasons the number of authors shown on this cover page is limited to 10 maximum.

4

GAIT CHARACTERISTICS AND THEIR DISCRIMINATIVE POWER IN GERIATRIC PATIENTS WITH AND WITHOUT COGNITIVE IMPAIRMENT

Lisette H.J. Kikkert^{1,2,4}, Nicolas Vuillerme^{2,3},
Jos P. van Campen⁴, Bregje A. Appels⁵,
Tibor Hortobágyi¹, Claudine J.C. Lamoth¹

¹ University of Groningen, University Medical
Centre Groningen, Center for Human Movement
Sciences, A. Deusinglaan 1, 9700 AD Groningen,
The Netherlands

² Université Grenoble Alpes, EA AGEIS, La
Tronche, France

³ Institut Universitaire de France, Paris, France

⁴ MC Slotervaart Hospital, Department of
Geriatric Medicine, Amsterdam, The Netherlands

⁵ MC Slotervaart Hospital, Department of
Medical Psychology and Hospital Psychiatry,
Amsterdam, The Netherlands

*Journal of NeuroEngineering and
Rehabilitation* (2017). 14:84

ABSTRACT

Background: A detailed gait analysis (e.g., measures related to speed, self-affinity, stability, and variability) can help to unravel the underlying causes of gait dysfunction, and identify cognitive impairment. However, because geriatric patients present with multiple conditions that also affect gait, results from healthy old adults cannot easily be extrapolated to geriatric patients. Hence, we (1) quantified gait outcomes based on dynamical systems theory, and (2) determined their discriminative power in three groups: healthy old adults, geriatric patients with- and geriatric patients without cognitive impairment. *Methods:* For the present cross-sectional study, 25 healthy old adults recruited from community (65 ± 5.5 years), and 70 geriatric patients with ($n=39$) and without ($n=31$) cognitive impairment from the geriatric dayclinic of the MC Slotervaart hospital in Amsterdam (80 ± 6.6 years) were included. Participants walked for 3 minutes during single- and dual-tasking at self-selected speed while 3D trunk accelerations were registered with an iPod touch G4. We quantified 23 gait outcomes that reflect multiple gait aspects. A multivariate model was built using Partial Least Square- Discriminant Analysis (PLS-DA) that best modelled participant group from gait outcomes. *Results:* For single-task walking, the PLS-DA model consisted of 4 Latent Variables that explained 63% and 41% of the variance in gait outcomes and group, respectively. Outcomes related to speed, regularity, predictability, and stability of trunk accelerations revealed with the highest discriminative power ($VIP>1$). A high proportion of healthy old adults (96% and 93% for single- and dual-task, respectively) was correctly classified based on the gait outcomes. The discrimination of geriatric patients with and without cognitive impairment was

poor, with 57% (single-task) and 64% (dual-task) of the patients misclassified. *Conclusions:* While geriatric patients vs. healthy old adults walked slower, and less regular, predictable, and stable, we found no differences in gait between geriatric patients with and without cognitive impairment. The effects of multiple comorbidities on geriatric patients' gait possibly causes a 'floor-effect', with no room for further deterioration when patients develop cognitive impairment. An accurate identification of cognitive status thus necessitates a multifactorial approach.

Keywords: Gait dynamics, Cognitive impairment, Multivariate analysis, iPod touch, Trunk accelerations, Discriminant analysis, Geriatric patients.

INTRODUCTION

Even healthy aging modifies gait. Declines in muscle mass and quality, decreased sensory functions, reductions in muscle activation, and a reorganization of the cortical and spinal circuits controlling posture and gait underlie the age-related evolution of gait slowing and abnormalities [1, 2]. Indeed, habitual gait speed decreases as much as 16% per decade, starting at age 60 [3]. Because a slow gait speed predicts numerous clinical conditions later in life [4], gait speed is perhaps the most studied feature of physical performance affected by age.

Notwithstanding the attractiveness of gait speed as a simple summary index of mobility, numerous other characteristics of gait have been established to quantify and diagnose age- and pathology-related gait abnormalities. For example, stride-to-stride variability quantified by the Coefficient of Variation (CoV) is 5.3% in elderly fallers compared to 1.1% in age-matched non-fallers [5]. Measures derived from trunk acceleration signals can be used to characterize postural control during walking and standing by means of quantifying the frequency content, amplitude, self-affinity, variability, synchronization, regularity, and local stability of the lower trunk [6-9]. In the present study, we use the term 'gait dynamics', and refer to outcomes that are indicative of the dynamic nature of the gait pattern and reflect its stable and adaptive features. Gait dynamics can discriminate young and old adults [10], individuals with and without a clinical condition [11, 12], fallers and non-fallers [9, 13-16], and older adults with and without cognitive disorders [17, 18].

However, the results of the latter studies cannot easily be extrapolated to geriatric patients who typically suffer from many clinical conditions that also interact with gait performance. Among many, sarcopenia [19], thoracic kyphosis [11], polypharmacy [20], and cognitive impairment [21] can individually and in combination negatively affect gait. We therefore suspect that different combinations of gait measures are distinctive for geriatric patients vs. healthy old adults. Considering the abundant evidence supporting the effects of cognitive impairment on gait and its potential validity to serve as an early marker of cognitive impairment [21], we also expect that geriatric patients with additional cognitive impairment present with distinct gait characteristics. However, due to a lack of brain and neurophysiological correlates of specific gait outcomes, it is not yet possible to specify exactly which gait outcome corresponds to a clinical condition. A detailed gait analysis, including dynamic gait measures, can therefore help to unravel the underlying causes of gait dysfunction, and identify and predict clinical conditions. The identification of cognitive impairment could be even more accurate during walking while performing a cognitive dual-task [17, 22]. Because gait and cognitive function partly rely on the same cortical resources [23], performing a cognitive demanding task while walking stresses the system and potentially enlarge the effects of cognitive impairment on gait [17, 22].

Hence, the purpose of the study was to determine gait characteristics in three groups: healthy old adults and geriatric patients with and without cognitive impairment. Our hypothesis is that a detailed gait analysis (e.g., measures related to speed, self-affinity, stability, and variability) will (1) quantify unique gait characteristics of the three groups, and (2) accurately discriminate geriatric patients vs. healthy old adults, and geriatric patients with and without cognitive impairment. We derived gait outcomes from trunk acceleration



signals in 3D during single- and dual-task walking. Because certain gait outcomes are inter-related while others are complementary to each other, we performed a Partial Least Square – Discriminant Analysis (PLS-DA). PLS combines principal component and regression analyses and extracts gait features by modelling the covariance structures [24]. By delineating and quantifying the information contained in the dynamics of gait, we can identify gait features that are unique to healthy old adults, and geriatric patients with and without cognitive impairment.

METHODS

Participants

Seventy patients were recruited from the geriatric outpatient dayclinic of the MC Slotervaart hospital in Amsterdam between January 2015 and July 2016 (mean age 80 ± 6.6 ; 53% women). Inclusion criteria were: age 65 or older. Exclusion criteria were: (1) inability to walk for at least three minutes without a walking aid, (2) having neurodegenerative disorders other than related to dementia (e.g., Parkinson's), (3) inability to speak fluently Dutch, and (4) having mobility disability caused by pain or by neurological or orthopaedic conditions, limiting function in one or both legs. The Medical Ethical Committee of the MC Slotervaart Hospital approved the study protocol. Data of an additional group of 25 independently living healthy old adults (mean age 65 ± 5.5), recruited from the community, were also included [10]. The latter group of old adults were carefully questioned about their health, and were excluded if they had a history of orthopaedic, cognitive, or neurological problems, or if they used medication that would affect gait or postural control. Hence, this group can be considered a cognitive and physical healthy control group consisting of relatively young older adults.

Age, height, weight, BMI, The Charlson Comorbidity Index (CCI) [25] and the number of medications used (> 4 denoting polypharmacy), were extracted from medical records. Grip strength of the dominant hand was quantified with a Jamar hand-held dynamometer. Patients were diagnosed for cognitive impairment by a geriatrician and a neuropsychologist based on (1) medical records and (2) cognitive performance on the Mini Mental State Examination (MMSE) (range 0-30) [26] and the 7-minute screen (7MS) test. The 7MS assessed memory and executive function using the Benton's Temporal Orientation (range 0-113), the Enhanced Cued Recall (range 0-16), the animal verbal fluency (range 0-45) and clock-drawing test (range 0-14) [27]. Based on the evaluation of the two clinical experts, patients were categorized as either cognitive impaired or cognitive intact, with the cognitive impaired group including patients with a diagnosis for Mild Cognitive Impairment (MCI) or dementia.

Procedures and data analysis

Participants walked for three minutes at a self-selected speed on a 10-m long course that was marked with cones, under single- and dual-task conditions. In order to capture time dependent (over multiple stride cycles) patterns in the entire accelerations signals, participants were instructed to keep walking, and make comfortable turns around the cones. Because we were interested in the entire gait pattern over the 3 minutes and steps are considered dependent, turns were included in the analysis. When patients did not succeed to walk for 3 minutes, the longest continuous part of the signal was used for

the analysis. A phonetic fluency task was introduced in the dual-task condition, in which participants were asked to name as many words starting with the letters 'g', 'p', or 'r' (one minute per letter) while walking. A cognitive single-task with letters 'd', 'a', and 't' was used as control condition [28].

Trunk accelerations were registered with an iPod touch G4 (iOS 6, Apple Inc.; sample frequency $\pm 100\text{Hz}$) that was fixed with a belt near the level of lumbar segment L3. The validity and reliability of gait and standing posture parameters derived from trunk accelerations have been reported previously [29]. A custom-made application 'iMoveDetection' was used to collect and store acceleration data from the built-in tri-axial accelerometer of the iPod [29]. Anterior-posterior (AP), medio-lateral (ML), and vertical (V) acceleration signals were analysed with custom-made software in MATLAB (version 2014b, The MathWorks Inc.). The signals were detrended, corrected for horizontal tilt, and low-pass filtered (Butterworth filter, 4th order; cut-off frequency 10 Hz).

Gait outcomes

We computed 23 gait outcomes. Gait speed was calculated by dividing distance walked (m) by time (s). The variability of the amplitude of accelerations was indexed by the Root Mean Square (RMS). The Index of Harmonicity (IH) was calculated as an indicator of smoothness, using the power spectrum of accelerations. The IH was estimated as the cumulative sum of the power spectral density of the fundamental frequency (step frequency), divided by that of the subsequent 9 harmonics. An IH of 1 represents a perfect smooth gait [8].

The Cross-sample Entropy (Cross-SampEn) quantified the degree of synchronization between AP and ML, AP and V, and ML and V accelerations. Cross-SampEn is the negative natural logarithm of the conditional probability that epochs with length m that match point-wise in the two related signals, repeat itself for $m+1$ points, within a tolerance of r (in the present study $m = 2$ and $r = 0.2$). A Cross-SampEn of 0 reflects perfect synchronization between the signals [30].

Gait regularity and symmetry was calculated for AP and V accelerations using the unbiased auto-correlation function of the acceleration signal. The signal was phase shifted with a window approximating average step and stride time. The first peak in the autocorrelation coefficient function relates to step- and the second to stride regularity. A value of 1 reflects perfect regular steps or strides [31]. The difference between step and stride regularity revealed gait symmetry, with 0 representing a perfect symmetric gait [7].

Multi-scale sample Entropy (Mscale-En) is an indicator of gait predictability. Multi-scale entropy takes the complexity of a system into account by calculating the predictability of a signal over time scales with increasing length. A 'coarse-graining' process is applied to the acceleration signals; non-overlapping windows of data points with an increasing length τ are constructed, with τ representing the time scale with a tolerance of r (in the present study $\tau = 7$ and $r = 0.2$). A complete predictable signal will adopt a Mscale-En value of 0 [32].

Local stability of trunk acceleration patterns was expressed as the λ_{\max} , i.e., maximal Lyapunov exponent, calculated with the Wolf algorithm as this algorithm is most appropriate



to evaluate local dynamic stability from relatively small data sets [33]. For the present study, we used an embedding of $n = 5$ dimensions, with a time delay τ of 10 samples (0.1s). Larger λ_{\max} indicate greater sensitivity to local perturbations.

Finally, stride frequency variability (FreqVar) was computed from AP accelerations. FreqVar was estimated as the relative fluctuations in phase progression [6].

Statistical analysis

Differences in participant characteristics were examined with a one-way ANOVA with Bonferroni post-hoc test using SPSS version 24. Significance level was set at $p < 0.05$.

A Partial Least Squares Discriminant Analysis (PLS-DA), using the PLS_toolbox for MatLab (version 3.7.1; Eigenvector Research Inc.) was applied. PLS is a combination of principal component and regression analysis, and can handle data with a large number of highly collinear, inter-related variables (gait outcomes) with relatively few observations (participants) [24]. In contrast to usual regression analysis, PLS allows to study interrelations among multiple, interacting gait outcomes. Such a multivariate analysis thus controls for dependencies among gait outcomes and enables to consider the data in an overarching way. Note that this dealing with multicollinearity is crucial, in particular with respect to gait outcomes (e.g., gait speed and stride time are highly correlated). The PLS-DA model identified the internal covariance structure among gait outcomes (X-matrix) that best modelled group (Y-matrix) by removing common variance and by finding underlying latent variables (LV's). The optimal number of LV's was determined with the scree plot [24]. All variables were normalized to unit variance. For a more detailed mathematical explanation we refer to the study of Wold and colleagues [24]. The amount of variance explained of each gait outcome by the LV's indicated the modelling power of those outcomes in predicting the group. Note that a gait outcome without variation may be completely explained by the model, while this outcome may be unimportant to predict group. The Variable Importance in Projection (VIP) value reflects the importance of each individual gait outcome to the particular group. Gait outcomes with a VIP-score > 1.0 are considered important to the model and have a high discriminative power [24].

Violin plots based on the Kernel density distribution showed the distribution of gait outcomes for the three groups, and revealed peaks, bumps, and valleys in the shape of distributions [34]. The size of the kernels demonstrates the density between individual scores, with a large size reflecting heterogeneity among patients.

RESULTS

Thirty-nine of 70 geriatric patients were diagnosed with cognitive impairment (56%; 10 patients with dementia and 29 with MCI). Geriatric patients were significantly older (80 ± 6.6 years) than healthy old adults (65 ± 5.5 years). Geriatric patients with and without cognitive impairment presented with 1.8 serious comorbidities on average and met the criterion for polypharmacy (> 4). Both geriatric patient groups were comparable for all outcomes (age, BMI, handgrip strength, medication use, number of comorbidities), except for cognitive

function. Cognitive impaired geriatric patients performed significantly worse on the MMSE and on all sub-scales of the 7MS (Table 1). In addition, all groups performed significantly different on the cognitive single-task ($p < 0.00$), with a score of 14.2 words/minute for healthy old adults, and 10.3 and 7.4 words/minute for cognitive intact and cognitive impaired geriatric patients, respectively.

Gait outcomes were computed from 298 ± 50 strides on average (mean walking time 177 s, mean stride frequency 1.76 Hz) for single-task walking. For dual-task walking, outcomes were derived from 297 ± 45 strides on average (mean walking time 185 s, mean stride frequency 1.61 Hz).

Table 1. Characteristics of the 95 participants (mean \pm SD)^a

	Healthy old adults (n=25)	Cognitive intact geriatric patients (n=31)	Cognitive impaired geriatric patients (n=39)
<i>Demographics</i>			
Age (years)	65 \pm 5.5	79 \pm 5.3	82.0 \pm 7.2 ^{A, B}
Height (cm)	168 \pm 8.6	167 \pm 9.4	166 \pm 8.2
Weight (kg)	71.3 \pm 12.2	73.3 \pm 14.6	68.0 \pm 12.5
Body Mass Index	25.0 \pm 3.6	26.3 \pm 5.3	23.5 \pm 6.2
Gait speed ST (m/s)	1.20 \pm 0.10	0.88 \pm 0.22	0.81 \pm 0.22 ^{A, B}
Gait speed DT (m/s)	1.01 \pm 0.12	0.69 \pm 0.19	0.68 \pm 0.22 ^{A, B}
<i>Cognitive function</i>			
MMSE	N.A.	27.4 \pm 2.3	23.9 \pm 3.8 ^C
BTO	N.A.	4.2 \pm 13.8	17.1 \pm 29.9 ^C
Enhanced Cued Recall	N.A.	14.9 \pm 1.7	10.5 \pm 4.4 ^C
Clock drawing	N.A.	11.8 \pm 1.8	9.8 \pm 2.6 ^C
Verbal fluency	N.A.	18.2 \pm 6.6	12.3 \pm 4.1 ^C
<i>Geriatric syndromes</i>			
CCI	N.A.	1.9 \pm 1.8	1.7 \pm 1.3
Handgrip strength (kg)	N.A.	26.3 \pm 6.4	26.0 \pm 7.2
Medications (number)	N.A.	6.4 \pm 4.1	5.5 \pm 3.4

Significance set at 5%. ^A = significant difference between healthy old adults and geriatric patients; ^B = significant difference between healthy old adults and cognitive impaired geriatric patients; ^C = significant difference between geriatric and cognitive impaired geriatric patients. N.A. = Not applicable; MMSE = Mini Mental State Examination; BTO = Benton's Temporal Orientation; CCI = Charlson Comorbidity Index; ST = single task; DT = dual task.

Gait characteristics for the 3 groups

For single-task walking, the PLS-DA model contained 4 LV's that explained 63% and 41% of the variance in gait outcomes (X) and group (Y), respectively. Gait outcomes are logically grouped and divided over the 4 LV's, with the first LV explaining most of the variance in X and Y. Similarly, the PLS-DA model for dual-task walking consisted of 4 LV's, explaining 67% and 38% of the variance in respectively gait outcomes (X) and group (Y). VIP-values per group indicated the importance of the gait outcomes to the particular group. Gait outcomes related to speed, regularity, predictability and stability of trunk accelerations revealed with the highest discriminative power (VIP>1) for both single- and dual-task walking (Table 2).



The interpretation of the above results necessitates the direction of the relationship between gait outcomes and participant group. Violin plots show the distribution of the 23 normalized gait outcomes for the three groups during single-task walking (Figure 1). Both geriatric patient groups walked slower than healthy old adults. In addition, geriatric patients presented with smaller amplitude magnitude (RMS), more synchronization of trunk accelerations (Cross-Sample Entropy), less regularity and symmetry (step and stride regularity and symmetry), less stability (λ_{\max}), and more stride variability (Frequency variability). Gait smoothness (Index of Harmonicity) and gait predictability (Multiscale Entropy) were comparable for geriatric patients and healthy old adults, and showed large kernel sizes. As visible from the violin plots, differences between cognitive intact and cognitive impaired geriatric patients were small for individual gait outcomes.

Table 2. PLSDA model details during single- and dual-task walking for the three groups^a

Gait outcome	Variance captured per LV (%)					VIP-values					
	LV1	LV2	LV3	LV4	Total	Single-task			Dual-task		
						HO	CI	CIM	HO	CI	CIM
Gait speed	78	5	1	3	86	1.4	0.5	1.3	1.7	1.2	1.5
RMS AP	58	4	0	0	62	1.0	0.7	0.8	1.1	1.2	0.9
RMS ML	47	1	12	3	62	1.3	0.5	1.2	1.3	0.9	1.1
RMS V	76	0	3	2	81	2.0	1.2	1.9	2.2	1.6	1.8
IH AP	53	1	3	1	58	1.3	0.9	1.5	1.1	0.8	0.9
IH ML	0	0	24	8	33	0.2	0.4	0.5	0.1	0.0	0.2
IH V	3	11	11	13	37	0.3	1.7	0.2	0.2	0.1	0.1
Cross-SEn AP-ML	42	19	0	6	68	0.8	1.2	0.7	1.0	1.4	0.8
Cross-SEn AP-V	34	3	15	20	72	0.8	0.3	0.7	1.1	0.7	1.0
Cross-SEn ML-V	30	4	8	19	61	0.7	0.9	0.9	1.2	0.8	1.1
Step Reg AP	57	2	8	5	72	1.0	0.5	0.9	1.1	0.7	0.9
Step Reg V	77	0	4	0	82	1.4	0.3	1.3	1.3	1.0	1.0
Stride Reg AP	73	0	9	3	85	1.4	0.5	1.3	1.3	0.9	1.0
Stride Reg V	82	0	10	1	93	1.5	0.3	1.3	1.5	1.1	1.1
Symmetry AP	30	2	11	4	47	0.5	0.8	0.7	0.5	0.3	0.6
Symmetry V	44	3	24	0	71	0.9	0.9	1.4	0.9	0.6	0.8
Mscale-En AP	19	1	26	5	51	0.3	0.2	0.7	1.8	0.6	3.6
Mscale-En ML	0	47	0	5	51	0.7	3.2	0.3	0.4	0.6	0.5
Mscale-En V	18	20	16	0	53	1.2	3.5	1.0	1.0	2.4	1.4
max-Lyap AP	23	0	8	14	45	0.7	0.4	0.8	1.4	1.0	1.1
max-Lyap ML	20	20	24	2	66	1.5	2.3	1.4	0.5	0.3	0.6
max-Lyap V	53	4	5	2	64	1.3	1.1	1.4	0.3	3.5	0.8
FreqVar AP	35	3	0	3	41	1.0	0.7	0.8	0.3	1.2	0.4

^aExplained variance (%) per LV for the single-task model, and VIP-values for healthy old (HO) adults, Cognitive Intact (CI) geriatric and Cognitive Impaired (CIM) geriatric patients during single- and dual task walking. A VIP > 1.0 denotes considerable importance of the gait outcome to the particular group (bold). LV = latent variable; VIP = Variable Importance in Projection; RMS = Root Mean Square; IH = Index of Harmonicity; Cross-SEn = Cross Sample Entropy; Mscale-En = Multi-scale Entropy; max-Lyap = maximal Lyapunov Exponent; FreqVar = Frequency Variability; AP = Anterior-Posterior; ML = Medio-Lateral; V = Vertical.

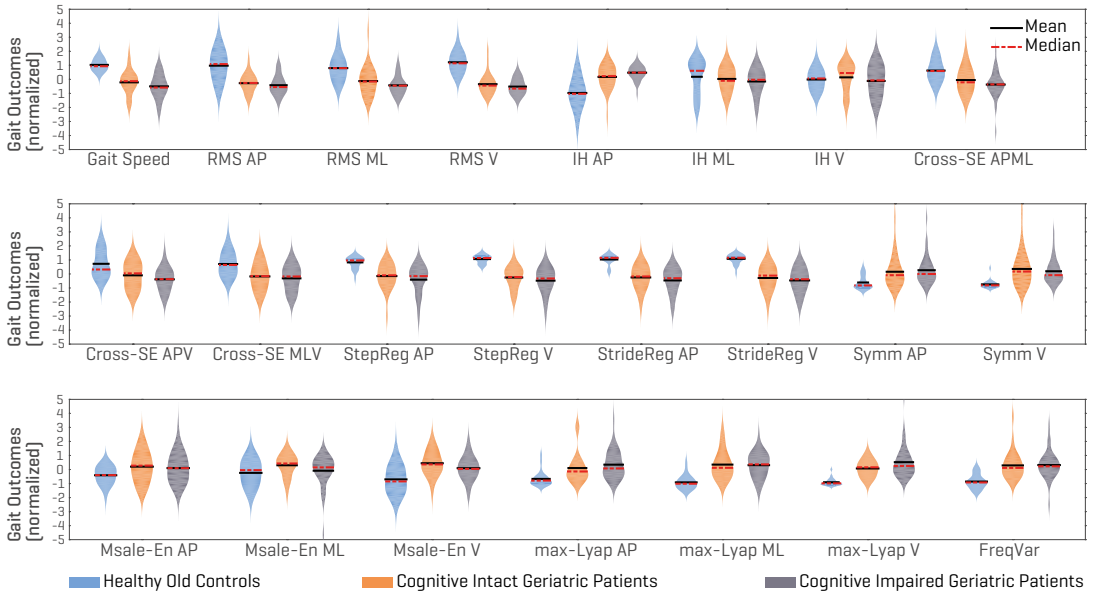


Figure 1. Violin plots based on the kernel density distribution show the distribution of gait outcomes. The violins show gait outcomes for healthy old adults ($n=25$), cognitive intact ($n=31$), and cognitive impaired geriatric patients ($n=36$) during single-task walking. A more compact and less elongated kernel denotes greater density and homogeneity across gait outcomes. Black and dashed red lines indicate mean and median values, respectively. Outcomes are standardized to unit variance for plotting purposes only. RMS = Root Mean Square; IH = Index of Harmonicity; Cross-SampEn = Cross Sample Entropy; Mscale-En = Multiscale Entropy; max-Lyap = maximal Lyapunov Exponent; FreqVar = Frequency Variability; AP = Anterior-Posterior; ML = Medio-Lateral; V = Vertical.

Discrimination of groups

For single- and dual-task walking, 24 (96%) and 23 (92%) of the 25 healthy old controls were correctly classified based on the gait outcomes, respectively. Fifteen (48%) and 11 (35%) of 31 cognitive intact geriatric patients were correctly classified during single- and dual-task walking. Fifteen (38%) and 14 (36%) of 39 cognitive impaired geriatric patients were correctly classified based on respectively single- and dual-task walking (Figure 2). The multivariate models for single- and dual-task conditions were comparable in terms of discriminative ability (VIP-scores), and classification accuracy.

DISCUSSION

We examined gait characteristics and their discriminative power in healthy old adults and geriatric patients with- and without cognitive impairment. Twenty-three accelerometry-based gait outcomes were calculated while subjects walked for 3 minutes at habitual speed with and without a cognitive dual-task. Gait outcomes related to speed, regularity, predictability, and stability of trunk accelerations revealed with the highest discriminative power ($VIP > 1$), and were thus most important in the identification of the three groups of old adults in terms of their gait. Despite the correct classification of a high proportion of

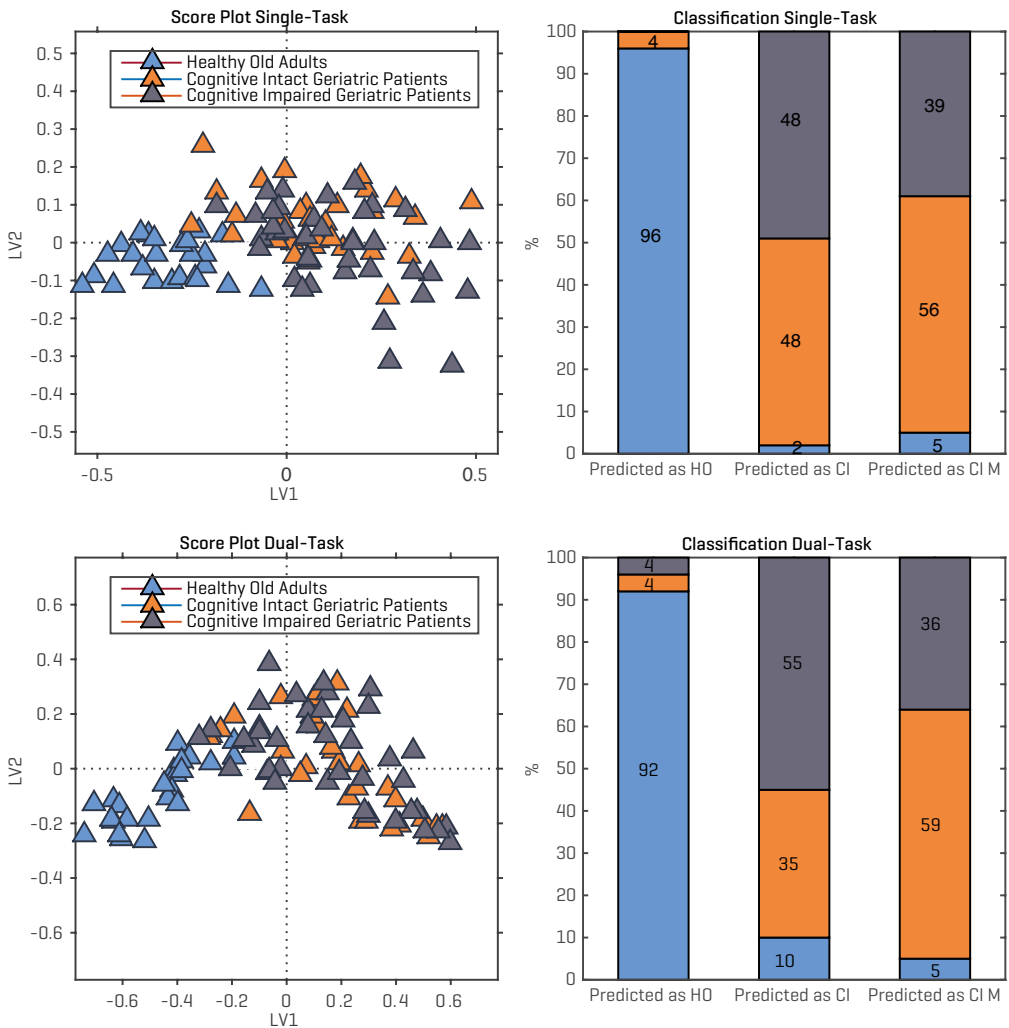


Figure 2. Score plots and classification accuracy. Score plots (left panel) visualize the individual participant scores and shows the relationship between gait outcomes and participants of each group with respect to the first two Latent Variables for single-task (upper panel) and dual-task walking (lower panel). Healthy old adults present in a sharply separated cluster, while 57% and 64% of geriatric patients with cognitive intact (CI) and cognitive impaired (CIM) geriatric patients are misclassified for single- and dual-task, respectively (right panel).

healthy old adults (96% and 93% for single- and dual-task, respectively), the classification of geriatric patients with and without cognitive impairments was poor: 57% (single-task) and 64% (dual-task) of the patients were misclassified. We discuss gait characteristics for the three groups, and the lack of discrimination between geriatric patients with and without cognitive impairments.

Gait speed and speed-related outcomes (e.g., RMS, AP Index of Harmonicity) were important in the characterization of groups. Geriatric patients walked substantially slower (0.81 m/s) than healthy old adults (1.20 m/s) but gait speed was similar in patients with (0.88 m/s) and without (0.81 m/s) cognitive impairment. These values compare well with normative gait speed data for healthy old adults [35] and patients with cognitive impairment [21]. In general, age-related gait slowing results from a decline in neuromuscular and neurophysiological functioning that for example engenders sarcopenia and a slower reaction time [1]. Considering geriatric patients' higher age compared with healthy old adults, the slower gait speed was expected. Because cross-sectional and longitudinal studies reported that cognitive impairments are strongly associated with gait slowing [21], we also expected but found only 0.07 m/s additional gait slowing in our patients. This result is in agreement with a recent population study that concluded that a slow baseline gait speed was only modestly related to future cognitive decline, and provided no early marker of clinical progression from MCI to dementia [36].

With regards to gait regularity, predictability, and stability, gait outcomes in ML and V direction were particularly important, as indicated by the large VIP-scores. Geriatric patients vs. healthy old controls walked less regular, less predictable, and less stable. Especially, gait control in ML direction is crucial in maintaining balance and gait alterations in this direction have been associated with dynamic instability, numerous pathologies, as well as with adverse life-events such as falling [9]. The decline in gait regularity and stability in geriatric patients may be related to a decline in executive functioning. Because imaging studies reported associations between the activation of wide brain networks and gait speed, especially in cognitively impaired old adults, gait is far from and automatically controlled motor task and involves cognitive functioning [37]. In particular, reductions in executive function may result in inaccurate control of limb movements and diminished feed-back that caused gait irregularity and instability [38]. For instance, differences in step and stride regularity have been suggested to reflect differences in the motor control of propulsion and braking phases of gait [7], a process highly depending on lower limb control and accurate feedback mechanisms. In support of this explanation, structural and functional neuroimaging data suggest that prefrontal brain areas (the areas executive functions are predominantly located) are most susceptible to age-related decline [39]. Even though geriatric patients with vs. without cognitive impairments did score worse on the executive function tests, there was no corresponding decline in gait regularity and stability. Those results compare to a recent study [40], but are in contrast to studies that reported a lower gait regularity in patients with MCI or dementia during single- tasking [41] and dual-tasking [42]. Subject characteristics may account for these discrepancies between studies, as our patient group was relatively old and presented with multiple geriatric conditions that are known to affect gait.

With respect to the classification accuracy, the gait outcomes revealed close to perfect classification of the healthy old group (96% and 92% for single- and dual-task, respectively). However, the discrimination between geriatric patients with and without cognitive impairments was poor, with 57% (single-task) and 64% (dual-task) of the patients misclassified. This finding was unexpected, as the cognitively impaired vs. cognitive intact geriatric patients scored significantly lower on global cognition (3.5 points lower MMSE



score), and on executive and memory functioning. Furthermore, an additional cognitive stressor in the dual-task condition did not improve the discrimination between the geriatric patient groups. The number of clinical conditions per se can substantially affect geriatric patients' gait [20]. The effects of comorbidities in our patients presumably sum to a level that causes a floor-effect so that when cognitive impairment adds to the symptoms, gait does not deteriorate any further, even if tested under dual-task walking.

Our data are in line with a lack of gait differences between frail and cognitively impaired old adults during single- or dual-task walking [40]. The latter study quantified gait kinematics derived from lower trunk accelerations in old adults aged >75 who meet Fried's criteria for frailty. Despite the relatively short walking distance (5m), they found that the gait kinematics were highly sensitive to distinguish frail groups and healthy old controls, but not between frail patients with and without cognitive impairment during either single- or dual-task walking. Our and previous data [40] thus raise the possibility of a clinical threshold beyond which the use of only gait outcomes to identify cognitive impairment is insufficient. We interpret these findings to mean that: (1) the prediction of cognitive impairment from gait abnormalities may be most effective in early phases of cognitive decline, where the influences of comorbidities on gait are limited. Hence, in frail geriatric patients, (2) the identification of cognitive decline requires a multi-variate approach, including physical, cognitive, pharmacological, and behavioural measures.

Although most aspects of gait performance (e.g., related to speed, regularity, predictability, and stability) appeared important in the characterization of the groups, some outcomes produced low discriminative power. A possible explanation could be that our geriatric patients were very heterogeneous, as indicated by the large kernel sizes of for example gait synchronization (Cross-sample Entropy), and gait smoothness (Index of Harmonicity) (Figure 1). Given this variety in gait patterns, and because geriatric patients often present with a shuffling gait, we calculated gait outcomes that are independent of step detection and recommend the use of such an approach in geriatric patients. An accurate, automatic, detection of foot-contact indices from acceleration signals is difficult, and already achieves an error rate of 7.4% in healthy old adults [43]. This error rate is expected to increase with gait slowing and/or shuffling; conditions very common among geriatric patients.

Despite the relatively low sample size, which can be considered a potential limitation of the study, we speculate that the outcomes can be generalized to similar population groups (i.e., age-matched healthy old adults and geriatric patients admitted to outpatient clinics). Although both geriatric patient groups were comparable in terms of age, sex, weight, height, BMI, number of comorbidities, gript strength, and medication use (Table 1), we cannot exclude the effects of potential other factors on gait function (e., thoracic kyphosis). Finally, the present analysis only focused on gait aspects derived from 3D-trunk accelerations. Future studies are encouraged to study the discriminative ability of for example gait kinetics to identify cognitive impairment.

Conclusions

In conclusion, gait outcomes related to speed, regularity, predictability, and stability of trunk accelerations were most important in the characterization of patient groups and revealed with a large discriminative power. Such measures were highly sensitive to discriminate healthy old adults from geriatric patients but could not discriminate geriatric patients with and without cognitive impairment during single- or dual-task walking. Thus, our data suggest that caution is needed to predict geriatric patients' cognitive status from gait performance alone. We propose that an accurate identification of cognitive impairment requires a multivariate approach that comprises not only a comprehensive gait analysis, but also other physical, cognitive, and behavioural measures.

LIST OF ABBREVIATIONS

3D = three dimensional; PLS-DA= Partial Least Squares - Discriminant Analysis; VIP = Variable Importance in Projection; BMI = Body Mass Index; CCI = Charlson Comorbidity Index; MMSE = Mini Mental State Examination; 7MS = 7-Minute Screen; BTO = Benton's Temporal Orientation; ECR = Enhanced Cued Recall; AP = Anterior-Posterior; ML = Medio-Lateral; V = vertical; RMS = Root Mean Square; IH = Index of Harmonicity; Cross-SampEn = Cross-sample Entropy; Mscale-En = Multi-scale sample Entropy; λ_{\max} = maximal Lyapunov exponent; FreqVar = stride frequency variability; LV = Latent Variable.

ETHICS APPROVAL AND CONSENT TO PARTICIPATE

The Medical Ethical Committee of the MC Slotervaart Hospital approved the study protocol.

CONSENT FOR PUBLICATION

Not applicable.

AVAILABILITY OF DATA AND MATERIAL

The datasets used and/or analyzed during the current study are available from the corresponding author on reasonable request. PLS_toolbox for MatLab (version 3.7.1; Eigenvector Research Inc.) was used to analyse the data. This software requires a license for non-academics.



COMPETING INTERESTS

The authors declare that they have no competing interests.

FUNDING

This work was supported in part by the French national program “programme d’Investissements d’Avenir IRT Nanoelec” ANR-10-AIRT-05, Institut Universitaire de France

AUTHORS’ CONTRIBUTIONS

CL, TH, and JvC designed the study protocol. LK collected and analyzed the data, with close supervision of CL. Results were interpreted by CL, TH, NV, JvC, and LK. LK wrote the first draft, and NV, BA, JvC, TH, and CL contributed significantly in revising the manuscript. All authors read and approved the final manuscript.

ACKNOWLEDGEMENTS

All the participants are gratefully acknowledged.

AUTHORS’ INFORMATION

¹ University of Groningen, University Medical Centre Groningen, Center for Human Movement Sciences, A. Deusinglaan 1, 9700 AD Groningen, The Netherlands

² Université Grenoble Alpes, EA AGEIS, La Tronche, France

³ Institut Universitaire de France, Paris, France

⁴ MC Slotervaart Hospital, Department of Neuropsychology, Amsterdam, The Netherlands

⁵ MC Slotervaart Hospital, Department of Geriatric Medicine, Amsterdam, The Netherlands

REFERENCES

1. Papegaaij S, Taube W, Baudry S, Otten E, Hortobagyi T. Aging causes a reorganization of cortical and spinal control of posture. *Front Aging Neurosci.* 2014;6:28; doi:10.3389/fnagi.2014.00028 [doi].
2. Vandervoort AA. Aging of the human neuromuscular system. *Muscle Nerve.* 2002;25 1:17-25; doi:10.1002/mus.1215 [pii].
3. Hortobagyi T, Lesinski M, Gabler M, VanSweeringen JM, Malatesta D, Granacher U. Effects of Three Types of Exercise Interventions on Healthy Old Adults' Gait Speed: A Systematic Review and Meta-Analysis. *Sports Med.* 2015; doi:10.1007/s40279-015-0371-2 [doi].
4. Abellan van Kan G, Rolland Y, Andrieu S, Bauer J, Beauchet O, Bonnefoy M et al. Gait speed at usual pace as a predictor of adverse outcomes in community-dwelling older people: an International Academy on Nutrition and Aging (IANA) Task Force. *J Nutr Health Aging.* 2009;13 10:881-889.
5. Hausdorff JM, Edelberg HK, Mitchell SL, Goldberger AL, Wei JY. Increased gait unsteadiness in community-dwelling elderly fallers. *Arch Phys Med Rehabil.* 1997;78 3:278-283; doi:S0003-9993(97)90034-4 [pii].
6. Rispens SM, Pijnappels M, van Schooten KS, Beek PJ, Daffertshofer A, van Dieen JH. Consistency of gait characteristics as determined from acceleration data collected at different trunk locations. *Gait Posture.* 2014;40 1:187-192; doi:10.1016/j.gaitpost.2014.03.182 [doi].
7. Kobsar D, Olson C, Paranjape R, Hadjistavropoulos T, Barden JM. Evaluation of age-related differences in the stride-to-stride fluctuations, regularity and symmetry of gait using a waist-mounted tri-axial accelerometer. *Gait Posture.* 2014;39 1:553-557; doi:10.1016/j.gaitpost.2013.09.008 [doi].
8. Lamoth CJ, Beek PJ, Meijer OG. Pelvis-thorax coordination in the transverse plane during gait. *Gait Posture.* 2002;16 2:101-114; doi:S0966636201001461 [pii].
9. Riva F, Toebes MJ, Pijnappels M, Stagni R, van Dieen JH. Estimating fall risk with inertial sensors using gait stability measures that do not require step detection. *Gait Posture.* 2013;38 2:170-174; doi:10.1016/j.gaitpost.2013.05.002 [doi].
10. Kosse NM, Vuillerme N, Hortobagyi T, Lamoth CJ. Multiple gait parameters derived from iPod accelerometry predict age-related gait changes. *Gait Posture.* 2016;46:112-117; doi:10.1016/j.gaitpost.2016.02.022 [doi].
11. de Groot MH, van der Jagt-Willems HC, van Campen JP, Lems WF, Beijnen JH, Lamoth CJ. A flexed posture in elderly patients is associated with impairments in postural control during walking. *Gait Posture.* 2014;39 2:767-772; doi:10.1016/j.gaitpost.2013.10.015 [doi].
12. Kaptein RG, Wezenberg D, IJmker T, Houdijk H, Beek PJ, Lamoth CJ et al. Shotgun approaches to gait analysis: insights & limitations. *J Neuroeng Rehabil.* 2014;11:120-0003-11-120; doi:10.1186/1743-0003-11-120 [doi].
13. van Schooten KS, Pijnappels M, Rispens SM, Elders PJ, Lips P, Daffertshofer A et al. Daily-Life Gait Quality as Predictor of Falls in Older People: A 1-Year Prospective Cohort Study. *PLoS One.* 2016;11 7:e0158623; doi:10.1371/journal.pone.0158623 [doi].
14. Doi T, Hirata S, Ono R, Tsutsumimoto K, Misu S, Ando H. The harmonic ratio of trunk acceleration predicts falling among older people: results of a 1-year prospective study. *J Neuroeng Rehabil.* 2013;10:7-0003-10-7; doi:10.1186/1743-0003-10-7 [doi].
15. Ihlen EA, Weiss A, Bourke A, Helbostad JL, Hausdorff JM. The complexity of daily life walking in older adult community-dwelling fallers and non-fallers. *J Biomech.* 2016; doi:S0021-9290(16)30254-8 [pii].
16. Toebes MJ, Hoozemans MJ, Furrer R, Dekker J, van Dieen JH. Local dynamic stability and variability of gait are associated with fall history in elderly subjects. *Gait Posture.* 2012;36 3:527-531; doi:10.1016/j.gaitpost.2012.05.016 [doi].
17. Lamoth CJ, van Deudekom FJ, van Campen JP, Appels BA, de Vries OJ, Pijnappels M. Gait stability and variability measures show effects of impaired cognition and dual tasking in frail people. *J Neuroeng Rehabil.* 2011;8:2-0003-8-2; doi:10.1186/1743-0003-8-2 [doi].
18. IJmker T, Lamoth CJ. Gait and cognition: the relationship between gait stability and variability with executive function in persons with and without dementia. *Gait Posture.* 2012;35 1:126-130; doi:10.1016/j.gaitpost.2011.08.022 [doi].



19. Landi F, Liperoti R, Russo A, Giovannini S, Tosato M, Capoluongo E et al. Sarcopenia as a risk factor for falls in elderly individuals: results from the iSIRENTE study. *Clin Nutr.* 2012;31 5:652-658; doi:10.1016/j.clnu.2012.02.007 [doi].
20. de Groot MH, van Campen JP, Moek MA, Tulner LR, Beijnen JH, Lamoth CJ. The effects of fall-risk-increasing drugs on postural control: a literature review. *Drugs Aging.* 2013;30 11:901-920; doi:10.1007/s40266-013-0113-9 [doi].
21. Kikkert LH, Vuillerme N, van Campen JP, Hortobagyi T, Lamoth CJ. Walking ability to predict future cognitive decline in old adults: A scoping review. *Ageing Res Rev.* 2016;27:1-14; doi:S1568-1637(16)30009-5 [pii].
22. Montero-Odasso M, Muir SW, Speechley M. Dual-task complexity affects gait in people with mild cognitive impairment: the interplay between gait variability, dual tasking, and risk of falls. *Arch Phys Med Rehabil.* 2012;93 2:293-299; doi:10.1016/j.apmr.2011.08.026 [doi].
23. Holtzer R, Epstein N, Mahoney JR, Izzetoglu M, Blumen HM. Neuroimaging of mobility in aging: a targeted review. *J Gerontol A Biol Sci Med Sci.* 2014;69 11:1375-1388; doi:10.1093/gerona/glu052 [doi].
24. Wold S, Sjörström M, Eriksson L. PLS-regression: a basic tool of chemometrics. *Chemometrics Intellig Lab Syst.* 2001;58 2:109-130; doi:http://dx.doi.org/10.1016/S0169-7439(01)00155-1.
25. Charlson ME, Pompei P, Ales KL, MacKenzie CR. A new method of classifying prognostic comorbidity in longitudinal studies: development and validation. *J Chronic Dis.* 1987;40 5:373-383.
26. Tombaugh TN, McIntyre NJ. The mini-mental state examination: a comprehensive review. *J Am Geriatr Soc.* 1992;40 9:922-935.
27. Solomon PR, Hirschhoff A, Kelly B, Relin M, Brush M, DeVeaux RD et al. A 7 minute neurocognitive screening battery highly sensitive to Alzheimer's disease. *Arch Neurol.* 1998;55 3:349-355.
28. Schmand, B., Groenink S.C., van den Dungen, M. Letterfluency: psychometrische eigenschappen en Nederlandse normen.
29. Kosse NM, Caljouw S, Vervoort D, Vuillerme N, Lamoth CJ. Validity and Reliability of Gait and Postural Control Analysis Using the Tri-axial Accelerometer of the iPod Touch. *Ann Biomed Eng.* 2015;43 8:1935-1946; doi:10.1007/s10439-014-1232-0 [doi].
30. Kavanagh JJ. Lower trunk motion and speed-dependence during walking. *J Neuroeng Rehabil.* 2009;6:9-0003-6-9; doi:10.1186/1743-0003-6-9 [doi].
31. Moe-Nilssen R, Helbostad JL. Estimation of gait cycle characteristics by trunk accelerometry. *J Biomech.* 2004;37 1:121-126; doi:S0021929003002331 [pii].
32. Costa M, Peng C., L. Goldberger A, Hausdorff JM. Multiscale entropy analysis of human gait dynamics. 2003;330 1-2:53-60; doi:http://dx.doi.org/10.1016/j.physa.2003.08.022.
33. Cignetti F, Decker LM, Stergiou N. Sensitivity of the Wolf's and Rosenstein's algorithms to evaluate local dynamic stability from small gait data sets. *Ann Biomed Eng.* 2012;40 5:1122-1130; doi:10.1007/s10439-011-0474-3 [doi].
34. Hintze JL, Nelson RD. Violin Plots: A Box Plot-Density Trace Synergism. 1998;52 2:181-184; doi:10.1080/00031305.1998.10480559.
35. Bohannon RW, Williams Andrews A. Normal walking speed: a descriptive meta-analysis. *Physiotherapy.* 2011;97 3:182-189; doi:10.1016/j.physio.2010.12.004 [doi].
36. Hooghiemstra AM, Ramakers IHGB, Sistermans N, Pijnenburg YAL, Aalten P, Hamel REG et al. Gait Speed and Grip Strength Reflect Cognitive Impairment and Are Modestly Related to Incident Cognitive Decline in Memory Clinic Patients With Subjective Cognitive Decline and Mild Cognitive Impairment: Findings From the 4C Study. *J Gerontol A Biol Sci Med Sci.* 2017;72 6:846-854; doi:10.1093/gerona/glx003 [doi].
37. Verlinden VJ, de Groot M, Cremers LG, van der Geest JN, Hofman A, Niessen WJ et al. Tract-specific white matter microstructure and gait in humans. *Neurobiol Aging.* 2016;43:164-173; doi:10.1016/j.neurobiolaging.2016.04.005 [doi].
38. Yogev-Seligmann G, Hausdorff JM, Giladi N. The role of executive function and attention in gait. *Mov Disord.* 2008;23 3:329-42; quiz 472; doi:10.1002/mds.21720 [doi].
39. Lemaitre H, Goldman AL, Sambataro F, Verchinski BA, Meyer-Lindenberg A, Weinberger DR et al. Normal age-related brain morphometric changes: nonuniformity across cortical thickness, surface area and gray matter volume?. *Neurobiol Aging.* 2012;33 3:617.e1-617.e9; doi:10.1016/j.neurobiolaging.2010.07.013 [doi].

40. Martinez-Ramirez A, Martinikorena I, Lecumberri P, Gomez M, Millor N, Casas-Herrero A et al. Dual Task Gait Performance in Frail Individuals with and without Mild Cognitive Impairment. *Dement Geriatr Cogn Disord*. 2016;42 1-2:7-16; doi:10.1159/000447451 [doi].
41. Maquet D, Lekeu F, FAU - Warzee E, Warzee E, FAU - Gillain S, Gillain S et al. Gait analysis in elderly adult patients with mild cognitive impairment and patients with mild Alzheimer's disease: simple versus dual task: a preliminary report. 1475-097X (Electronic); 1475-0961 (Linking).
42. Gillain S, Drame M, Lekeu F, Wojtasik V, Ricour C, Croisier JL et al. Gait speed or gait variability, which one to use as a marker of risk to develop Alzheimer disease? A pilot study. *Aging Clin Exp Res*. 2016;28 2:249-255; doi:10.1007/s40520-015-0392-6 [doi].
43. Dijkstra B, Zijlstra W, Scherder E, Kamsma Y. Detection of walking periods and number of steps in older adults and patients with Parkinson's disease: accuracy of a pedometer and an accelerometry-based method. *Age Ageing*. 2008;37 4:436-441; doi:10.1093/ageing/afn097 [doi].

