

University of Groningen

Almere Lage Vaart: op zoek naar de Oude Eem. Booronderzoek naar Oude Getijde Afzettingen aan de Trekweg en Kievitsweg in Almere, gemeente Almere

Woltinge, I.

IMPORTANT NOTE: You are advised to consult the publisher's version (publisher's PDF) if you wish to cite from it. Please check the document version below.

Document Version

Publisher's PDF, also known as Version of record

Publication date:

2009

[Link to publication in University of Groningen/UMCG research database](#)

Citation for published version (APA):

Woltinge, I. (2009). *Almere Lage Vaart: op zoek naar de Oude Eem. Booronderzoek naar Oude Getijde Afzettingen aan de Trekweg en Kievitsweg in Almere, gemeente Almere*. (6 redactie) (Grondsporen; Nr. 6). Groninger Instituut voor Archeologie, Rijksuniversiteit Groningen.

Copyright

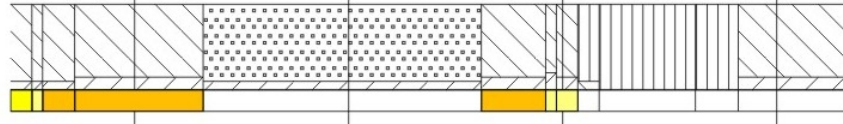
Other than for strictly personal use, it is not permitted to download or to forward/distribute the text or part of it without the consent of the author(s) and/or copyright holder(s), unless the work is under an open content license (like Creative Commons).

Take-down policy

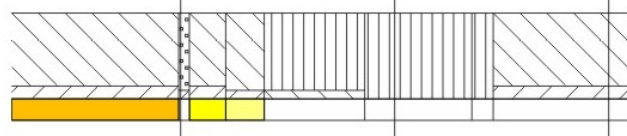
If you believe that this document breaches copyright please contact us providing details, and we will remove access to the work immediately and investigate your claim.

Downloaded from the University of Groningen/UMCG research database (Pure): <http://www.rug.nl/research/portal>. For technical reasons the number of authors shown on this cover page is limited to 10 maximum.

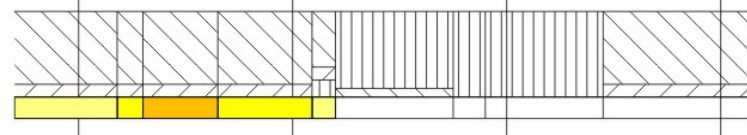
K16



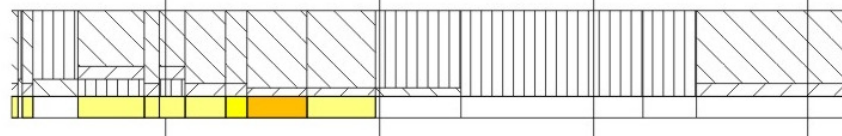
K19



K21



K17



K18

