

University of Groningen

Bacterial colonization of the peri-implant sulcus in dentate patients

Stokman, M A; van Winkelhoff, A J; Vissink, A; Spijkervet, F K L; Raghoobar, G M

Published in:
Clinical Oral Investigations

DOI:
[10.1007/s00784-016-1941-x](https://doi.org/10.1007/s00784-016-1941-x)

IMPORTANT NOTE: You are advised to consult the publisher's version (publisher's PDF) if you wish to cite from it. Please check the document version below.

Document Version
Publisher's PDF, also known as Version of record

Publication date:
2017

[Link to publication in University of Groningen/UMCG research database](#)

Citation for published version (APA):

Stokman, M. A., van Winkelhoff, A. J., Vissink, A., Spijkervet, F. K. L., & Raghoobar, G. M. (2017). Bacterial colonization of the peri-implant sulcus in dentate patients: a prospective observational study. *Clinical Oral Investigations*, 21(2), 717-724. <https://doi.org/10.1007/s00784-016-1941-x>

Copyright

Other than for strictly personal use, it is not permitted to download or to forward/distribute the text or part of it without the consent of the author(s) and/or copyright holder(s), unless the work is under an open content license (like Creative Commons).

The publication may also be distributed here under the terms of Article 25fa of the Dutch Copyright Act, indicated by the "Taverne" license. More information can be found on the University of Groningen website: <https://www.rug.nl/library/open-access/self-archiving-pure/taverne-amendment>.

Take-down policy

If you believe that this document breaches copyright please contact us providing details, and we will remove access to the work immediately and investigate your claim.

Downloaded from the University of Groningen/UMCG research database (Pure): <http://www.rug.nl/research/portal>. For technical reasons the number of authors shown on this cover page is limited to 10 maximum.

Bacterial colonization of the peri-implant sulcus in dentate patients: a prospective observational study

M. A. Stokman¹ · A. J. van Winkelhoff^{2,3} · A. Vissink¹ ·
F. K. L. Spijkervet¹ · G. M. Raghoobar¹

Received: 26 November 2015 / Accepted: 11 August 2016 / Published online: 24 August 2016
© The Author(s) 2016. This article is published with open access at Springerlink.com

Abstract

Objectives The aim of the present study was to compare the composition of the periodontal microflora at baseline (T0) with the submucosal microflora at least 1 year after implant placement (T1) in periodontally healthy patients.

Material and methods For all 169 consecutive patients that visited our clinic during 1 year, we determined their periodontal parameters, implant mucosal index, and presence of implant calculus. At T0, self-reported smoking status was recorded and subgingival and submucosal biofilm samples were obtained and analyzed for the presence and numbers of selected periodontal pathogens. All measurements were repeated at T1.

Results One hundred twenty patients completed the study. Periodontal parameters were stable or had improved at T1. The total bacterial load was lower at implant sites ($P < 0.05$). The prevalence of *Porphyromonas gingivalis* was low at baseline, but at T1, detection rate and numbers were higher at implant sites compared to dentate sites. At T1, the frequency of detection of *P. gingivalis* ($P = 0.01$), *Parvimonas micra* ($P = 0.018$), and *Fusobacterium nucleatum*

($P = 0.035$) was higher in smoking patients ($n = 23$) than in non-smokers ($n = 97$).

Conclusions Colonization of the submucosal peri-implant area is similar to the composition of subgingival microbiota. Smoking has a measurable effect on the colonization of implant-associated biofilms and may select for *P. gingivalis*, *P. micra*, and *F. nucleatum*.

Clinical relevance The colonization of implants by well-known periodontal pathogens is very similar to that in normal dentition, also in a healthy cohort. Smoking status was related with the prevalence of periodontal pathogens where smokers harbored more often periodontal pathogens such as *P. gingivalis*, *P. micra*, and *F. nucleatum*.

Keywords Bacteria · Colonization · Dental implants · Smoking

Introduction

Dental implants are used to replace missing teeth and to support crowns, bridges, and prostheses. Dental implants have a high survival rate, and implant therapy is considered highly successful [1, 2]. However, implant-associated infections also occur regularly. Peri-implant mucositis after 10 years is estimated to affect 63 % of patients and 31 % of implants, while peri-implantitis affects 19 % of patients and 10 % of implants [3]. Among other factors, bacteria are thought to play an essential role in both peri-implant mucositis and peri-implantitis [4].

Colonization of the submucosal peri-implant area starts immediately after installation of the implant or the abutment [5]. In edentulous patients, facultative anaerobic streptococci dominate initially [6], followed by

✉ M. A. Stokman
m.a.stokman@umcg.nl

¹ Department of Oral and Maxillofacial Surgery, University of Groningen, University Medical Center Groningen, P.O. Box 30.001, 9700 RB Groningen, The Netherlands

² Department of Medical Microbiology, University of Groningen, University Medical Center Groningen, Groningen, The Netherlands

³ Department of Center for Dentistry and Oral Hygiene, University of Groningen, University Medical Center Groningen, Groningen, The Netherlands

facultatively anaerobic rods and gram-negative strict anaerobic rods such as *Fusobacterium* and *Prevotella* species [7]. Using a DNA-DNA hybridization checkerboard technique, Quirynen et al. [8] studied early colonization of dental implants in dentate patients with a history of periodontitis. They observed that periodontitis-associated bacteria of the red cluster, i.e., *Porphyromonas gingivalis*, *Tannerella forsythia*, and *Treponema denticola*, could be detected in the peri-implant sulcus within 1 week after abutment connection. These red complex bacteria were also detected in a significant number of peri-implant sites by Fürst et al. [5]. In patients with a history of periodontitis, *P. gingivalis* could be detected in the peri-implant sulcus 1 month after abutment connection [9]. Takanashi et al. [10] studied colonization of dental implants in patients without a history of periodontitis and demonstrated that *P. gingivalis* and *Prevotella intermedia* are intra-orally transmitted from dentate to peri-implant sites. De Boever and De Boever [11] studied early colonization of non-submerged dental implants in patients with a history of aggressive periodontitis and found no or minor differences between the composition of the dentate and the peri-implant microflora after 6 months in most but not all patients. Van Brakel et al. [12] investigated the early colonization around zirconia and titanium abutments and found no significant differences 3 months post-surgery. Factors that may influence the colonization of the submucosal peri-implant microflora include the presence of natural teeth and the periodontal condition.

Most of the studies summarized above had a limited number of subjects, and these subjects were often patients with a history of periodontitis. Furthermore, most of these studies focused on early colonization. Therefore, the aim of the present study was to compare the composition of the periodontal microflora at baseline with the submucosal microflora at least 1 year after implant placement in periodontally healthy patients.

Material and methods

Patients

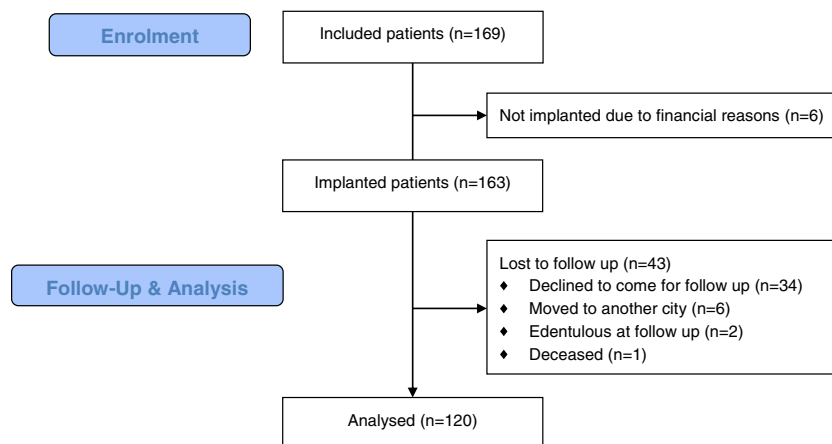
During 1 year, all consecutive eligible patients who were referred to the Department of Oral and Maxillofacial Surgery of the University Medical Center Groningen (UMCG) for dental implant treatment were included in this observational study. Dentate patients with pockets <6 mm were eligible unless they presented with systemic diseases or had been subjected to head and neck cancer treatment. The study design involved clinical, radiographic, and microbiological examination of the teeth at baseline (T0) and after at least 1 year after implantation (T1), including the peri-implant conditions.

The study was performed in accordance with Dutch law on ethical rules and principles for human research and in accordance with the 1964 Helsinki Declaration. The Medical Ethic Committee of the UMCG agreed with the study protocol (M15.184424).

Clinical parameters

At T0, periodontal measurements were taken at six sites per tooth (mesiobuccal, mesiolingual, distobuccal, distolingual, mid-buccal, and mid-lingual) using a manual probe. The clinical periodontal parameters included probing depth, modified plaque index (mPFI) (0 = no plaque, 1 = plaque on the probe, 2 = plaque seen by the naked eye, 3 = abundance of soft matter) [13], modified sulcus bleeding index (mBI) (0 = no bleeding, 1 = isolated bleeding spots, 2 = confluent line of blood, 3 = heavy or profuse bleeding) [13], recession (measured from the gingival margin to the cemento-enamel junction (CEJ); 0 = gingival margin was located coronal to the CEJ, 1 = gingival margin located apical to CEJ), and the absence (0) or presence (1) of suppuration. At T1, the same periodontal parameters were determined for the teeth and the implants. Additionally, for the implants, the implant mucosal index

Fig. 1 Flowchart of patient recruitment for the study



[14] and the absence (0) or presence (1) of calculus were determined. The self-reported current smoking status was recorded at T0 and T1.

Microbiological analysis

At baseline, subgingival samples were taken from the deepest and/or bleeding pocket in each quadrant of the dentition. If a patient had no signs of periodontal disease (pockets <4 mm, no bleeding on probing), the samples were taken from the mesiopalatal pocket of the first molars. If the first molars were not present, the second premolar was selected. If a patient had two or more implants, the samples from implants were pooled. At T1, this procedure was repeated at the same sample sites and peri-implant samples were taken. Two sterile paper points per tooth/implant were inserted to the depth of the pockets and left in place for 10 s and were collected and pooled in 2 ml reduced transport fluid [15]. The samples were processed for microbiological examination within 1 h after sampling.

The microbiological samples were analyzed according standard anaerobe culture techniques for the presence and numbers of *Aggregatibacter actinomycetemcomitans*, *P. gingivalis*, *P. intermedia*, *T. forsythia*, *Parvimonas micra*, *Fusobacterium nucleatum*, and *Campylobacter rectus* [16]. Also, the total number of colony-forming units per sample was determined [17, 18].

Statistical analysis

Changes over time for dichotomous data were analyzed with McNemar's test. For ordinal data, the Wilcoxon signed-rank test was used. Differences between groups were analyzed with the Mann-Whitney test. A sub-analysis was performed between the patients with a single tooth replacement and an overdenture. Two-sided *P* values <0.05 were considered statistically significant.

Multiple logistic regression analysis was used with the following variables to determine their predicted value influencing periodontal bacterial species at the follow-up assessment: age, smoking at follow-up assessment, use of antibiotics at baseline, modified plaque index at the implant site, modified sulcus bleeding index at the implant site, location of the implant (anterior or posterior), pocket depth at implant site, use of antibiotics at follow-up assessment, and presence of the periodontal bacteria at baseline. The variables that were significantly associated with the outcome variable ($P \leq 0.10$) were entered in the logistic regression analyses. Thereafter, variables not significantly contributing to the regression equation were removed ($P > 0.10$). All data were analyzed using IBM SPSS Statistics 22.

Results

One hundred sixty-nine consecutive eligible patients were included in this observational study: 83 males (43.6 ± 16.9 years, range 18–74 years) and 86 females (47.3 ± 16.3 years, range 18–79 years). Of these 169

Table 1 Characteristics of the analyzed patients ($n = 120$) and the total number of eligible patients ($n = 169$) at baseline

Patients' characteristics	120, <i>n</i> (%)	169, <i>n</i> (%)
Age mean \pm SD (years)	46.3 (16.5)	45.5 (16.7)
Gender: male/female	59/61	83/86
Type of reconstruction		
Single tooth replacement	106 (88.3)	NA
Overdenture maxilla	13 (10.8)	NA
Overdenture mandibula	1 (0.8)	NA
Number of implants per patient		
1	62 (51.7)	87 (51.5)
2	33 (27.5)	40 (23.7)
3	4 (3.3)	6 (3.6)
4	7 (5.8)	10 (5.9)
5	3 (2.5)	4 (2.4)
6	9 (7.5)	13 (7.7)
7	1 (0.8)	2 (1.2)
8	1 (0.8)	1 (0.6)
Missing	0 (0)	6 (3.6)
Type of implant		
Astra	4 (3.3)	4 (2.4)
Bone Level Roxolid	1 (0.8)	2 (1.2)
Bone Level Straumann	50 (41.7)	70 (41.4)
Brånemark	3 (2.5)	6 (3.6)
3i	7 (5.8)	8 (4.7)
NobelActive	2 (1.7)	2 (1.2)
NobelReplace	9 (7.5)	12 (7.1)
NobelSpeedy	1 (0.8)	2 (1.2)
Standard Straumann	16 (13.3)	20 (11.8)
Standard plus Straumann	24 (20.0)	33 (19.5)
Combination of types	3 (2.5)	4 (2.4)
Missing	0 (0)	6 (3.6)
Augmentation		
No	55 (45.8)	76 (45.0)
Yes, before implantation	47 (39.2)	63 (37.3)
Yes, during sinus augmentation	3 (2.5)	3 (1.8)
Yes, during implantation	15 (12.5)	21 (12.4)
Missing	0 (0)	6 (3.6)
Implant location		
Front	34 (28.3)	46 (27.2)
Lateral parts	72 (60.0)	97 (57.4)
Front and lateral parts	14 (11.7)	20 (11.8)
Use of antibiotics during the last 3 months		
No	88 (73.3)	124 (73.4)
Yes	32 (26.7)	45 (26.6)
Reason of antibiotics use		
Not applicable	88 (73.3)	124 (73.4)
Augmentation	23 (19.2)	32 (18.9)
Others	9 (7.5)	13 (7.7)
Self-reported smoking		
No	93 (77.5)	124 (73.4)
Yes	27 (22.5)	45 (26.6)

No significant differences were present between the analyzed patients and the total group

NA not assessed

patients, 6 did eventually not receive implants and 43 were lost to follow-up for various reasons (Fig. 1). Consequently, 120 patients remained for final analysis. The demographic parameters are presented in Table 1. No significant differences in baseline variables were observed between the total group of 169 patients and the 120 patients that completed follow-up. The mean time between implantation and follow-up was 17 ± 3 months.

Clinical parameters

The clinical periodontal parameters at T0 and T1 and clinical parameters at the implant sites at T1 are shown in Table 2. At T0, 97.5 % of the patients showed maximum probing pocket depth ≤ 4 mm; at T1, this was 96.3 %. Compared to T0, significantly less plaque accumulation was observed at follow-up ($P = 0.001$). All other recorded periodontal parameters showed no

Table 2 Clinical periodontal and peri-implant parameters at T0 and T1

Clinical parameters	Baseline (T0)	Follow-up (T1)	
	Teeth, <i>n</i> (%)	Teeth, <i>n</i> (%)	Implants, <i>n</i> (%)
Self-reported smoking			
No	93 (77.5)	97 (80.8)	97 (80.8)
Yes	27 (22.5)	23 (19.2)	23 (19.2)
Modified plaque index			
Score 0, no detection of plaque	70 (58.3)	89 (74.2)	104 (86.7)
Score 1, plaque on the probe	35 (29.2)	23 (19.2)	9 (7.5)
Score 2, plaque seen by the naked eye	15 (12.5)	8 (6.7)	4 (3.3)
Score 3, abundance of soft matter	0 (0)	0 (0)	3 (2.5)
Deepest pocket (mm)			
1	0 (0)	0 (0)	1 (0.8)
2	42 (35.0)	44 (36.7)	58 (48.3)
3	57 (47.5)	60 (50.0)	42 (35.0)
4	18 (15.0)	12 (10.0)	12 (10.0)
5	3 (2.5)	4 (3.3)	3 (2.5)
6	0 (0)	0 (0)	3 (2.5)
10	0 (0)	0 (0)	1 (0.8)
Modified sulcus bleeding index			
Score 0, no bleeding	91 (75.8)	89 (74.2)	67 (55.8)
Score 1, isolated bleeding spots	22 (18.3)	28 (23.3)	44 (36.7)
Score 2, confluent line of blood	7 (5.8)	3 (2.5)	9 (7.5)
Score 3, heavy or profuse bleeding	0 (0)	0 (0)	0 (0)
Implant mucosal index			
Score 0, normal mucosa	NA	NA	80 (66.7)
Score 1, mild inflammation	NA	NA	36 (30.0)
Score 2, moderate inflammation	NA	NA	4 (3.3)
Score 3, severe inflammation	NA	NA	0 (0)
Implant dental calculus present			
Score 0, no dental calculus	NA	NA	118 (98.3)
Score 1, dental calculus present	NA	NA	2 (1.7)
Recessions			
No	100 (83.3)	97 (80.8)	119 (99.2)
Yes	20 (16.7)	23 (19.2)	1 (0.8)
Suppuration			
No	120 (100)	120 (100)	120 (100)
Yes	0 (0)	0 (0)	0 (0)

NA not assessed

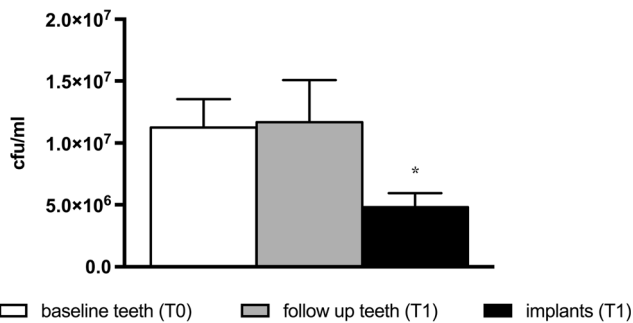


Fig. 2 Total mean bacterial load (cfu/ml) ± SEM (N = 126). Asterisk significantly different from T0 and T1 periodontal values

statistically significant changes between the T0 and T1 for the teeth. At T1, the maximum probing pocket depth ≤4 mm at the implant sites was 94.1 %. The mPII was significantly lower at the implant sites at T1 compared to T0 at the teeth (P < 0.01). In contrast, the mBI at the implant sites was significantly higher compared to the teeth at T0 and T1 (respectively, P = 0.009 and P = 0.002); this higher mBI predominantly referred to isolated bleeding spots.

Smoking

At baseline, the self-reported current smoking status identified 93 non-smokers (77.5 %) and 27 smokers (22.5 %). At T1, 4 patients had stopped smoking, resulting in 97 non-smokers and 23 smokers (Tables 1 and 2). No significant differences were found between the non-smoking and smoking groups for any of the clinical periodontal parameters.

Microbiological analysis

The mean total bacterial load (colony-forming units (cfu)/ml) at the dentate sites did not differ between T0 and T1 and was

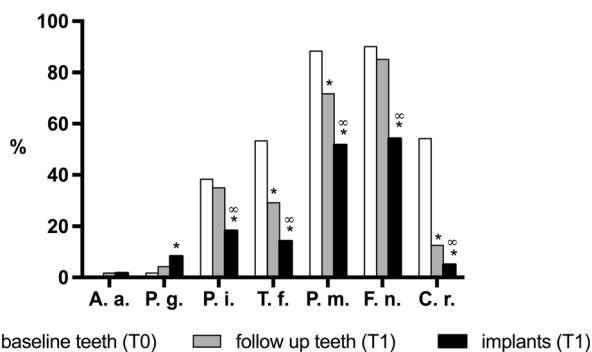


Fig. 3 Prevalence (%) of selected periodontal pathogens. Asterisk significantly different from T0 values; infinity significantly different from T1 values. A.a. *Aggregatibacter actinomycetemcomitans*, P.g. *Porphyromonas gingivalis*, P.i. *Prevotella intermedia*, T.f. *Tannerella forsythia*, F.n. *Fusobacterium nucleatum*, P.m. *Parvimonas micra*, C.r. *Campylobacter rectus*

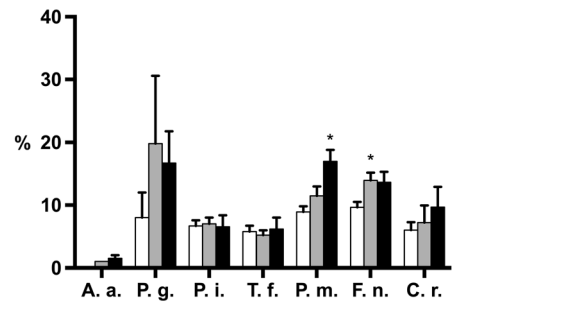


Fig. 4 Relative abundance of selected periodontal pathogens ± SEM in culture-positive patients. Asterisk significantly different from T0 values.

A.a. *Aggregatibacter actinomycetemcomitans*, P.g. *Porphyromonas gingivalis*, P.i. *Prevotella intermedia*, T.f. *Tannerella forsythia*, F.n. *Fusobacterium nucleatum*, P.m. *Parvimonas micra*, C.r. *Campylobacter rectus*

significantly higher than that at the implant sites at T1 (1.13E + 07 vs 4.8E + 06) (Fig. 2; P < 0.05). A sub-analysis between single tooth replacements and overdentures showed that the mean total bacterial load (cfu/ml) in the overdenture group was significantly higher at the implant site at T1 compared to T0 at the dentate sites. This was probably caused by a higher mBI. However, this subgroup of patients with an overdenture was very small, only 14 patients.

The prevalence of selected periodontal bacterial species at dentate sites at T0 and T1 is depicted in Fig. 3. The prevalence of *A. actinomycetemcomitans* was <2 % in all three groups. At the dentate sites, the prevalence of *T. forsythia*, *P. micra*, and *C. rectus* was significantly lower at T1 compared to T0 (P < 0.01). At implant sites, the prevalence of *P. intermedia*, *T. forsythia*, *P. micra*, *F. nucleatum*, and *C. rectus* species was significantly lower compared to the teeth at T0 and T1 (P < 0.05). In contrast, the prevalence of *P. gingivalis* had increased at T1 at dentate sites and was higher at the implant sites (P = 0.039).

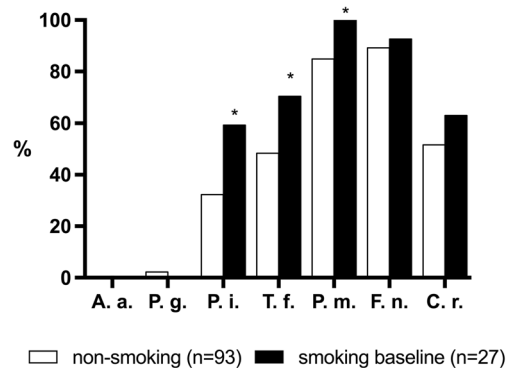


Fig. 5 Prevalence (%) of selected periodontal pathogens in smokers (n = 30) and non-smokers (n = 96) at T0. Asterisk significant difference between both groups. A.a. *Aggregatibacter actinomycetemcomitans*, P.g. *Porphyromonas gingivalis*, P.i. *Prevotella intermedia*, T.f. *Tannerella forsythia*, F.n. *Fusobacterium nucleatum*, P.m. *Parvimonas micra*, C.r. *Campylobacter rectus*

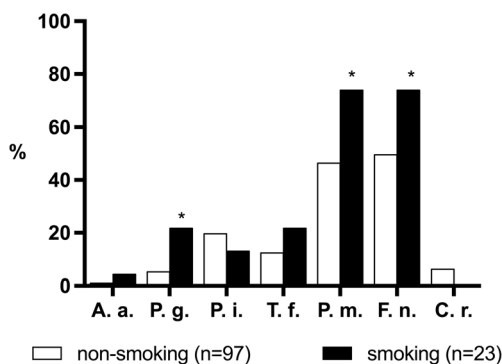


Fig. 6 Prevalence (%) of selected periodontal pathogens at implants in smokers ($n = 26$) and non-smokers ($n = 100$) at T1. Asterisk significant difference between both groups. A.a. *Aggregatibacter actinomycetemcomitans*, P.g. *Porphyromonas gingivalis*, P.i. *Prevotella intermedia*, T.f. *Tannerella forsythia*, F.n. *Fusobacterium nucleatum*, P.m. *Parvimonas micra*, C.r. *Campylobacter rectus*

The proportions of selected periodontal pathogens in culture-positive patients are depicted in Fig. 4. At dentate sites, a higher mean percentage at T1 compared to T0 was observed for *P. gingivalis*, *P. intermedia*, *P. micra*, *F. nucleatum*, and *C. rectus*, but the differences were significantly higher only for *F. nucleatum* ($P = 0.005$). At implant sites, the mean percentage of *A. actinomycetemcomitans*, *T. forsythia*, *P. micra*, and *C. rectus* was higher compared to the dentate sites at T1, but the differences were not significant. Comparing the implant sites with the dentate sites at T0, a significantly higher mean was observed only for *P. micra* at the implant sites ($P < 0.001$).

Effect of smoking on the dentate and implant microflora

At baseline, the prevalence of *P. intermedia*, *T. forsythia*, *P. micra*, *F. nucleatum*, and *C. rectus* at dentate sites was higher in the smoking group ($n = 27$) compared to the non-

smoker group ($n = 93$) with statistically significant differences for *P. intermedia* ($P = 0.011$), *T. forsythia* ($P = 0.045$), and *P. micra* ($P = 0.033$) (Fig. 5).

The prevalence of the selected bacterial species in the peri-implant microflora at T1 also showed differences between smokers and non-smokers with a significantly higher prevalence in smokers for *P. gingivalis* ($P = 0.01$), *P. micra* ($P = 0.018$), and *F. nucleatum* ($P = 0.035$) (Fig. 6).

The proportions of selected periodontal pathogens in culture-positive patients in the dentate sites at T0 and T1 and at implant sites were not significantly different between smokers and non-smokers.

Multiple logistic regression analysis

The results of the multiple logistic regression analysis of the various parameters and their predicted value influencing periodontal bacterial species at the follow-up assessment are presented in Table 3. *P. gingivalis*, *P. micra*, and *F. nucleatum* were more often seen in smokers, *P. intermedia* more often in subjects with a higher modified sulcus bleeding index, *T. forsythia* and *P. micra* more often in subjects with deeper pockets, and *F. nucleatum* in subjects with a higher modified plaque index.

Discussion

In this study, we assessed the microflora of the peri-implant sulcus by bacterial species that are associated with progression of periodontal disease [16] and peri-implantitis [19] in dentate patients with minimal periodontal inflammation at baseline. Colonization of the submucosal peri-implant area is similar to the composition of the subgingival microbiota, but the total bacterial load is significantly lower in the implants compared

Table 3 Significant multivariable associations ($P < 0.10$) with the presence of periodontal pathogens at implant sites at the follow-up measurement

Periodontal pathogen	Variable	Multiple regression analysis				
		B^a	S.E.	OR	95 % CI	P
<i>Aggregatibacter actinomycetemcomitans</i>	–					
<i>Porphyromonas gingivalis</i>	Smoking	1.63	0.68	5.11	1.34–19.49	0.02
<i>Prevotella intermedia</i>	Modified sulcus bleeding index	–0.90	0.52	0.41	0.15–1.13	0.08
<i>Tannerella forsythia</i>	Pocket depth	0.61	0.23	1.83	1.17–2.87	0.01
<i>Parvimonas micra</i>	Smoking	1.17	0.53	3.22	1.14–9.12	0.03
	Pocket depth	0.38	0.21	1.47	0.98–2.20	0.07
<i>Fusobacterium nucleatum</i>	Smoking	0.98	0.53	2.67	0.95–7.50	0.06
	Modified plaque Index	1.39	0.68	4.00	1.06–15.10	0.04
<i>Campylobacter rectus</i>	Antibiotic use at baseline	1.82	0.89	6.14	1.07–35.35	0.04

S.E. standard error, OR odds ratio, 95 % CI 95 % confidence interval

^aRegression coefficient

to the teeth. Previous studies have shown a similar composition of the microflora between teeth and implants on the short term [5, 10, 11]. Furthermore, in our prospective observational study, the periodontal parameters were assessed at baseline while in many studies, the observations were retrospective and baseline measurements were not available [20].

Although the probing pocket depth distribution was comparable between dentate and implant sites, the total cultivable bacterial load (cfu/ml) was significantly lower at the implant sites. This may be related to the low plaque index at the implant sites: 87 % of the patients had a mPII of 0. This does not explain the significantly higher modified sulcus bleeding index at the implants compared to the teeth, although this increase predominantly concerned isolated bleeding spots. This could be explained by the difference in the composition of the connective tissue, the alignment of the collagen bundles, and the distribution of vascular structures in the compartment apical of the junctional epithelium between the gingiva at teeth and the mucosa at implants [21].

The prevalence of two major periodontal pathogens, *A. actinomycetemcomitans* and *P. gingivalis*, was low at T0 and T1, which reflects the healthy periodontal condition of the study subjects [22].

We found that the prevalence of most of the selected bacterial species at dentate sites had decreased at T1 relative to T0 values and was lowest at implant sites at T1. An exception was the detection of *P. gingivalis*, which had increased at T1 at dentate sites and was highest at implant sites at T1. This could indicate that placement of dental implants may favor the formation of a submucosal biofilm that supports colonization by this pathogen and may explain the frequent detection of this pathogen in peri-implantitis lesions [23]. The highest prevalence of *P. gingivalis* was found at implant sites at T1. We observed a significantly higher proportion of *P. micra* at implant sites relative to dentate sites. This finding is accordance with the recent observation of Eick et al. [20], who also reported a higher prevalence and higher numbers of this species at implant sites.

Our study confirms that smoking significantly affects the composition of the dentate and peri-implant microflora [18, 20, 24]. At baseline, the prevalence of the selected species was higher in current smokers, except for *P. gingivalis* and *A. actinomycetemcomitans*, which is in agreement with earlier findings [18]. Differences in prevalence between current smokers and non-smokers at the implant sites reached the level of significance for *P. gingivalis*, *P. micra*, and *F. nucleatum*. These three species have been linked to a higher risk of developing peri-implantitis [19, 25–27]. In conclusion, colonization of the submucosal peri-implant area is similar to the composition of the subgingival dentate microbiota. Smoking affects the colonization of implant-associated biofilms and

may favor the periodontal pathogens *P. gingivalis*, *P. micra*, and *F. nucleatum*.

Acknowledgments We thank Prof. Dr. P.U. Dijkstra, Department of Rehabilitation Medicine, University Medical Center Groningen, The Netherlands, and Dr. Y.C.M. de Waal, Center for Dentistry and Oral Hygiene, University Medical Center Groningen, The Netherlands, for their outstanding statistical assistance and Charles Frink for his linguistic advice.

Compliance with ethical standards

Conflict of interest M.A. Stokman declares that she has no conflict of interest. A.J. van Winkelhoff is a co-owner of Laboral, a company that is concerned with microbiological diagnosis of oral infections. A. Vissink declares that he has no conflict of interest. F.K.L. Spijkervet declares that he has no conflict of interest. G.M. Raghoobar declares that he has no conflict of interest.

Funding The work was supported by the Department of Oral and Maxillofacial Surgery, University Medical Centre Groningen, The Netherlands.

Ethical approval This article is an observational study and is not subject to the Medical Research Involving Human Subjects Act (WMO). The Medical Ethic Committee of the UMCG agreed with the study protocol. All procedures performed in this study involving human participants were in accordance with the ethical standards of the institutional and/or national research committee and with the 1964 Helsinki Declaration and its later amendments or comparable ethical standards.

Informed consent For this type of study, formal consent is not required.

Open Access This article is distributed under the terms of the Creative Commons Attribution 4.0 International License (<http://creativecommons.org/licenses/by/4.0/>), which permits unrestricted use, distribution, and reproduction in any medium, provided you give appropriate credit to the original author(s) and the source, provide a link to the Creative Commons license, and indicate if changes were made.

References

1. Jung RE, Zembic A, Pjetursson BE, Zwahlen M, Thoma DS (2012) Systematic review of the survival rate and the incidence of biological, technical, and aesthetic complications of single crowns on implants reported in longitudinal studies with a mean follow-up of 5 years. *Clin Oral Implants Res* 23(Suppl 6):2–21
2. Berglundh T, Persson L, Klinge B (2002) A systematic review of the incidence of biological and technical complications in implant dentistry reported in prospective longitudinal studies of at least 5 years. *J Clin Periodontol* 29(Suppl 3):197–212
3. Atieh MA, Alsabeeha NH, Faggion CM Jr, Duncan WJ (2013) The frequency of peri-implant diseases: a systematic review and meta-analysis. *J Periodontol* 84:1586–1598
4. Mombelli A, Decaillet F (2011) The characteristics of biofilms in peri-implant disease. *J Clin Periodontol* 38(Suppl 11):203–213
5. Fürst MM, Salvi GE, Lang NP, Persson GR (2007) Bacterial colonization immediately after installation on oral titanium implants. *Clin Oral Implants Res* 18:501–508

6. Mombelli A, Buser D, Lang NP (1988) Colonization of osseointegrated titanium implants in edentulous patients. Early results. *Oral Microbiol Immunol* 3:113–120
7. Mombelli A, Mericske-Stern R (1990) Microbiological features of stable osseointegrated implants used as abutments for overdentures. *Clin Oral Implants Res* 1:1–7
8. Quirynen M, Vogels R, Peeters W, van Steenberghe D, Naert I, Haffajee A (2006) Dynamics of initial subgingival colonization of ‘pristine’ peri-implant pockets. *Clin Oral Implants Res* 17:25–37
9. van Winkelhoff AJ, Goene RJ, Benschop C, Folmer T (2000) Early colonization of dental implants by putative periodontal pathogens in partially edentulous patients. *Clin Oral Implants Res* 11:511–520
10. Takanashi K, Kishi M, Okuda K, Ishihara K (2004) Colonization by *Porphyromonas gingivalis* and *Prevotella intermedia* from teeth to osseointegrated implant regions. *Bull Tokyo Dent Coll* 45:77–85
11. De Boever AL, De Boever JA (2006) Early colonization of non-submerged dental implants in patients with a history of advanced aggressive periodontitis. *Clin Oral Implants Res* 17:8–17
12. van Brakel R, Cune MS, van Winkelhoff AJ, de Putter C, Verhoeven JW, van der Reijden W (2011) Early bacterial colonization and soft tissue health around zirconia and titanium abutments: an in vivo study in man. *Clin Oral Implants Res* 22:571–577
13. Mombelli A, van Oosten MA, Schurch E Jr, Land NP (1987) The microbiota associated with successful or failing osseointegrated titanium implants. *Oral Microbiol Immunol* 2:145–151
14. Löe H, Silness J (1963) Periodontal disease in pregnancy. I. Prevalence and severity. *Acta Odontol Scand* 21:533–551
15. Syed SA, Loesche WJ (1972) Survival of human dental plaque flora in various transport media. *Appl Microbiol* 24:638–644
16. Zambon JJ (1996) Periodontal diseases: microbial factors. *Ann Periodontol* 1:879–925
17. van Steenberghe TJ, Petit MD, Tjihof CJ, van Winkelhoff AJ, van der Velden U, de Graaff J (1993) Survival in transport media of *Actinobacillus actinomycetemcomitans*, *Porphyromonas gingivalis* and *Prevotella intermedia* in human subgingival samples. *Oral Microbiol Immunol* 8:370–374
18. van Winkelhoff AJ, Bosch-Tijhof CJ, Winkel EG, van der Reijden WA (2001) Smoking affects the subgingival microflora in periodontitis. *J Periodontol* 72:666–671
19. Shibli JA, Melo L, Ferrari DS, Figueiredo LC, Faveri M, Feres M (2008) Composition of supra- and subgingival biofilm of subjects with healthy and diseased implants. *Clin Oral Implants Res* 19:975–982
20. Eick S, Ramseier CA, Rothenberger K, Bragger U, Buser D, Salvi GE (2015) Microbiota at teeth and implants in partially edentulous patients. A 10-year retrospective study. *Clin Oral Implants Res* 27: 218–225
21. Lindhe J, Berglundh T (1998). In: Lindhe J, Karring T, Lang NP (eds) *Clinical periodontology and implant dentistry*, 3rd edition. Munksgaard, Copenhagen, pp 862–867
22. van Winkelhoff AJ, Loos BG, van der Reijden WA, van der Velden U (2002) *Porphyromonas gingivalis*, *Bacteroides forsythus* and other putative periodontal pathogens in subjects with and without periodontal destruction. *J Clin Periodontol* 29:1023–1028
23. Leonhardt A, Renvert S, Dahlen G (1999) Microbial findings at failing implants. *Clin Oral Implants Res* 10:339–345
24. Kumar PS, Matthews CR, Joshi V, de Jager M, Aspiras M (2011) Tobacco smoking affects bacterial acquisition and colonization in oral biofilms. *Infect Immun* 79:4730–4738
25. Cortelli SC, Cortelli JR, Romeiro RL, Costa FO, Aquino DR, Orzechowski PR, Araujo VC, Duarte PM (2013) Frequency of periodontal pathogens in equivalent peri-implant and periodontal clinical statuses. *Arch Oral Biol* 58:67–74
26. Tamura N, Ochi M, Miyakawa H, Nakazawa F (2013) Analysis of bacterial flora associated with peri-implantitis using obligate anaerobic culture technique and 16S rDNA gene sequence. *Int J Oral Maxillofac Implants* 28:1521–1529
27. Persson GR, Renvert S (2014) Cluster of bacteria associated with peri-implantitis. *Clin Implant Dent Relat Res* 16:783–793