

University of Groningen

Right Ventricular Function After Acute Myocardial Infarction Treated With Primary Percutaneous Coronary Intervention

Gorter, Thomas M; Lexis, Chris P H; Hummel, Yoran M; Lipsic, Erik; Nijveldt, Robin; Willems, Tineke P; van der Horst, Iwan C C; van der Harst, Pim; Melle, van, J.P.; van Veldhuisen, Dirk J

Published in:
 American Journal of Cardiology

DOI:
[10.1016/j.amjcard.2016.05.006](https://doi.org/10.1016/j.amjcard.2016.05.006)

IMPORTANT NOTE: You are advised to consult the publisher's version (publisher's PDF) if you wish to cite from it. Please check the document version below.

Document Version
 Publisher's PDF, also known as Version of record

Publication date:
 2016

[Link to publication in University of Groningen/UMCG research database](#)

Citation for published version (APA):

Gorter, T. M., Lexis, C. P. H., Hummel, Y. M., Lipsic, E., Nijveldt, R., Willems, T. P., van der Horst, I. C. C., van der Harst, P., Melle, van, J. P., & van Veldhuisen, D. J. (2016). Right Ventricular Function After Acute Myocardial Infarction Treated With Primary Percutaneous Coronary Intervention: (from the Glycometabolic Intervention as Adjunct to Primary Percutaneous Coronary Intervention in ST-Segment Elevation Myocardial Infarction III Trial). *American Journal of Cardiology*, 118(3), 338-344.
<https://doi.org/10.1016/j.amjcard.2016.05.006>

Copyright

Other than for strictly personal use, it is not permitted to download or to forward/distribute the text or part of it without the consent of the author(s) and/or copyright holder(s), unless the work is under an open content license (like Creative Commons).

The publication may also be distributed here under the terms of Article 25fa of the Dutch Copyright Act, indicated by the "Taverne" license. More information can be found on the University of Groningen website: <https://www.rug.nl/library/open-access/self-archiving-pure/taverne-amendment>.

Take-down policy

If you believe that this document breaches copyright please contact us providing details, and we will remove access to the work immediately and investigate your claim.

Right Ventricular Function After Acute Myocardial Infarction Treated With Primary Percutaneous Coronary Intervention (from the Glycometabolic Intervention as Adjunct to Primary Percutaneous Coronary Intervention in ST-Segment Elevation Myocardial Infarction III Trial)



Thomas M. Gorter, MD^{a,*}, Chris P.H. Lexis, MD, PhD^a, Yoran M. Hummel, PhD^a, Erik Lipsic, MD, PhD^a, Robin Nijveldt, MD, PhD^b, Tineke P. Willems, MD, PhD^c, Iwan C.C. van der Horst, MD, PhD^d, Pim van der Harst, MD, PhD^a, Joost P. van Melle, MD, PhD^a, and Dirk J. van Veldhuisen, MD, PhD^a

Right ventricular (RV) dysfunction is a powerful risk marker after acute myocardial infarction (MI). Primary percutaneous coronary intervention (PCI) has markedly reduced myocardial damage of the left ventricle, but reliable data on RV damage using cardiac magnetic resonance imaging (MRI) are scarce. In a recent trial of patients with acute MI treated with primary PCI, in which the primary end point was left ventricular (LV) ejection fraction after 4 months measured with MRI, we conducted a prospectively defined substudy in which we examined RV function. RV ejection fraction (RVEF) and RV scar size were measured with MRI at 4 months. Tricuspid annular plane systolic excursion (TAPSE) and RV free wall longitudinal strain (FWLS) were assessed using echocardiography before discharge and at 4 months. We studied 258 patients without diabetes mellitus; their mean age was 58 ± 11 years, 79% men and mean LV ejection fraction was $54 \pm 8\%$. Before discharge, 5.2% of patients had TAPSE <17 mm, 32% had FWLS $> -20\%$ and 11% had FWLS $> -15\%$. During 4 months, TAPSE increased from 22.8 ± 3.6 to 25.1 ± 3.9 mm ($p < 0.001$) and FWLS increased from -22.6 ± 5.8 to $-25.9 \pm 4.7\%$ ($p < 0.001$). After 4 months, mean RVEF on MRI was $64.1 \pm 5.2\%$ and RV scar was detected in 5 patients (2%). There was no correlation between LV scar size and RVEF ($p = 0.9$), TAPSE ($p = 0.1$), or RV FWLS ($p = 0.9$). In conclusion, RV dysfunction is reversible in most patients and permanent RV ischemic injury is very uncommon 4 months after acute MI treated with primary PCI. © 2016 The Authors. Published by Elsevier Inc. This is an open access article under the CC BY-NC-ND license (<http://creativecommons.org/licenses/by-nc-nd/4.0/>). (Am J Cardiol 2016;118:338–344)

Right ventricular (RV) dysfunction is a powerful predictor of outcome after acute myocardial infarction (MI).^{1,2} Most studies on RV injury after acute MI was performed in the thrombolysis era.³ Despite the current large-scale use of primary percutaneous coronary intervention (PCI), RV dysfunction after acute MI remains common and associated with worse prognosis.^{4–9} In most studies, results are based on conventional echocardiography early after MI, whereas the RV frequently recovers from ischemic injury in the post-

MI period.^{10,11} In the current era of primary PCI, the degree of left ventricular (LV) damage is increasingly limited. In a recent study on the potential value of metformin in acute MI, it was demonstrated that mean left ventricular ejection fraction (LVEF) on magnetic resonance imaging (MRI) 4 months after PCI was 54%.¹² Any effects on RV functional parameters of this early intervention, in such cohort of patients with large myocardial areas at risk, were not reported. Since the RV is relatively protected against ischemic injury, we hypothesize that RV systolic function remains preserved after early PCI. In the present study, we therefore aimed to evaluate RV function after acute MI treated with PCI using both MRI and echocardiography.

Methods

The design and results of the Glycometabolic Intervention as Adjunct to Primary Percutaneous Coronary Intervention in ST-Segment Elevation Myocardial Infarction (GIPS) III trial have been published previously.^{12,13} In brief, the GIPS-III was a prospective, double-blind, randomized placebo-controlled trial, in patients who underwent primary PCI for ST-segment elevation MI (STEMI). The trial was

Departments of ^aCardiology, ^bRadiology, and ^dCritical Care, University of Groningen, University Medical Center Groningen, Groningen, the Netherlands; and ^cDepartment of Cardiology, Vrije University Medical Center, Amsterdam, the Netherlands. Manuscript received February 5, 2016; revised manuscript received and accepted May 4, 2016.

The GIPS-III trial was supported by grant 95103007 from ZonMw, the Netherlands Organization for Health Research and Development, The Hague, The Netherlands.

See page 343 for disclosure information.

*Corresponding author: Tel: (+31) 0503615995; fax: (+31) 0503611347.

E-mail address: tm.gorter@umcg.nl (T.M. Gorter).

designed to study the effect of metformin. All patients had an electrocardiographic recording with ST-segment elevation of more than 0.1 mV in 2 or more leads and were treated with at least 1 stent sized ≥ 3.0 mm. Major exclusion criteria were: previous MI, diabetes, and need for coronary artery bypass grafting. In the GIPS-III clinical trial, 380 patients were randomized 1:1 to receive metformin or placebo. The primary efficacy measure was LVEF measured by MRI 4 months after PCI. The GIPS-III trial demonstrated no significant difference in LVEF. All patients underwent additional echocardiographic assessment before discharge and 4 months. The study complies with the Declaration of Helsinki and was approved by the local ethics committee (Groningen, the Netherlands). All patients included in the GIPS-III trial provided written informed consent.

MRI studies were performed on 3.0-T scanner (Achieva, Philips, Best, The Netherlands). Electrocardiogram-gated cine steady state, free precession images were acquired with breath holding in contiguous short-axis slices covering the entire RV and LV (TR 3.9 ms; TE 1.94 ms; flip angle 45° ; matrix 180×220 ; voxel size $1.25 \times 1.25 \times 10$ mm; slice thickness 10 mm; and slice gap 0 mm). Using identical slice locations, late gadolinium enhancement (LGE) images were acquired 10 minutes after intravenous administration of a gadolinium-based contrast agent (Dotarem, Gorinchem, the Netherlands; 0.2 mmol/kg) with an inversion recovery, gradient echo pulse sequence to identify the location and extent of MI. The inversion time was individually set to null the signal of viable myocardium (TR 5.2 ms; TE 2.5 ms; flip angle 5° ; matrix 192×157 ; voxel size $1.25 \times 1.25 \times 10$ mm; slice thickness 10 mm; and slice gap 0 mm).

RV volumetric measurements were performed by a single experienced observer (TMG), blinded for medical history and treatment allocation. The endocardial and epicardial contours of the RV were traced manually on all end-systolic and end-diastolic slices, using QMass 7.6 (Medis, Leiden, the Netherlands). On the most basal slice, the right atrium and the pulmonary artery were excluded. Papillary muscle and trabeculae were included in the RV blood volume. RV end-systolic and end-diastolic volumes, stroke volume, ejection fraction (RVEF), and mass were calculated. The presence of RV LGE was visually determined by 2 independent observers, blinded for medical history and treatment allocation (TMG and TPW) and reviewed by a third observer (RN). RV LGE size was obtained by manually drawing regions of interest, using QMass 7.6 (Medis, Leiden, the Netherlands), and expressed as percentage of RV mass. An independent core laboratory (Image Analysis Center, VU University Medical Center, Amsterdam, the Netherlands) analyzed volumetric and LGE measurements of the LV.¹² RVEF and RV end-diastolic volumes, indexed for body surface area were compared with normal reference values (i.e., males: RVEF $\geq 48\%$ and indexed RV end-diastolic volume [RVEDVi] ≥ 114 ml/m²; females: RVEF $\geq 50\%$ and RVEDVi ≥ 103 ml/m²).¹⁴ Body surface area was calculated using the simplified calculation of Mosteller.¹⁵

All echocardiographic images were acquired using Vivid 7 and E9 systems (General Electric, Horton, Norway) with a 2.5- to 3.5-MHz probe and were digitally stored. Tricuspid annular plane systolic excursion

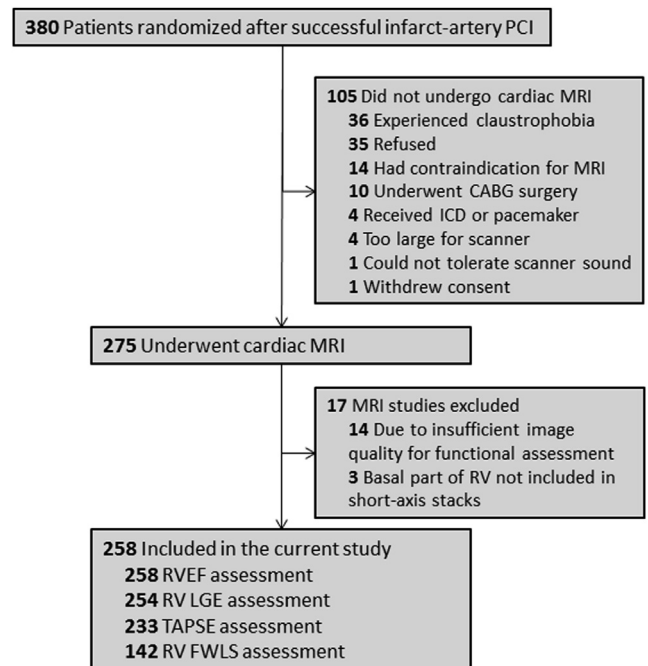


Figure 1. Flow of patients included in the present study. In case of multiple reasons for exclusion, only the primary reason of each case is shown. CABG = coronary artery bypass grafting; ICD = implantable cardioverter–defibrillator.

(TAPSE) was obtained with M-mode parallel to the RV free wall and across the tricuspid annular plane and TAPSE < 17 mm was defined abnormal.¹⁶ The longitudinal systolic movement of the lateral RV annulus was measured. RV free wall longitudinal strain (FWLS) was analyzed on the standard apical 4-chamber view using 2-dimensional (2-D) speckle tracking software by 2 investigators (TMG and YMH) using GE EchoPAC version BT12. Echocardiographic images with poor quality or poor tracking of 2 or more RV wall segments were excluded from the analysis. The endocardial border of the RV wall was manually traced according to current recommendations.¹⁶ On the most basal part, sampling of the right atrium, tricuspid annulus, and pericardium was avoided. RV FWLS was calculated as the mean of basal, mid, and apical segments of the RV free wall (Supplementary Data). RV FWLS $> -20\%$ is suggested moderately reduced and $> -15\%$ severely reduced.¹⁷ Intraobserver and interobserver reliability for RV FWLS measurements was assessed using 30 randomly selected studies.

Data were reported as mean \pm SD for normally distributed data, median (interquartile range) for skewed distributed data or n (%) for categorical variables. Differences in continuous variables between subgroups were assessed using independent samples *t* tests, Mann–Whitney *U* tests or one-way analysis of variance, according to distribution and the level of subgroups. Differences in categorical variables between groups were performed using chi-square tests. Change in RV FWLS during the 4 months was compared using paired samples *t* tests. Correlations between continuous variables were performed using Pearson's correlation. Intraobserver and interobserver variability of RV FWLS

Table 1
Baseline characteristics of the total study population

	All patients (n=258)	Metformin (n=129)	Placebo (n=129)
Age (years)	57.6 ± 11.4	57.5 ± 11.4	57.7 ± 11.4
Men	203 (79%)	102 (79%)	101 (78%)
Body mass index (kg/m ²)	27.0 ± 3.5	26.9 ± 3.7	27.0 ± 3.3
Hypertension	72 (28%)	40 (31%)	32 (25%)
Dyslipidemia	165 (64%)	77 (60%)	88 (68%)
Current smoker	130 (50%)	69 (54%)	61 (47%)
Stroke	1 (0.4%)	1 (0.8%)	0
Peripheral artery disease	0		
Previous PCI	4 (1.6%)	1 (0.8%)	3 (2.3%)
Clinical presentation			
Systolic blood pressure (mm Hg)	133 ± 22	133 ± 21	132 ± 23
Diastolic blood pressure (mm Hg)	84 ± 15	85 ± 15	83 ± 15
Heart rate (beats/min)	76 ± 16	76 ± 15	76 ± 17
Total ischemic time (min)	156 (105 – 243)	163 (109 – 265)	146 (102 – 232)
Single-vessel coronary disease	187 (73%)	89 (69%)	98 (76%)
Infarct-related coronary artery			
Left main coronary artery	0		
Left anterior descending	106 (41%)	52 (40%)	54 (42%)
Proximal	70 (27%)	32 (25%)	38 (30%)
Mid	32 (12%)	17 (13%)	15 (12%)
Left circumflex artery	43 (17%)	21 (16%)	22 (17%)
Right coronary artery	109 (42%)	56 (43%)	53 (41%)
Proximal	37 (14%)	15 (12%)	22 (17%)
Mid	48 (19%)	28 (22%)	20 (16%)
Infarct-related artery TIMI flow			
Pre intervention grade			
0	148 (57%)	71 (55%)	77 (60%)
1	18 (7%)	9 (7%)	9 (7%)
2	44 (17%)	27 (21%)	17 (13%)
3	48 (19%)	22 (17%)	26 (20%)
Post intervention grade			
2	16 (6%)	10 (8%)	6 (6%)
3	242 (94%)	119 (92%)	123 (95%)
Myocardial blush grade			
0	4 (2%)	1 (1%)	3 (2%)
1	18 (7%)	11 (9%)	7 (5%)
2	56 (22%)	27 (22%)	29 (23%)
3	178 (69%)	88 (68%)	90 (70%)
Laboratory values at admission			
Creatine kinase (U/L)	133 (90 – 215)	143 (97 – 285)	123 (87 – 181)
Myocardial band of creatine kinase (U/L)	17 (13 – 25)	18 (14 – 34)	16 (13 – 23)
Creatinine (μmol/L)	72 (64 – 82)	71 (62 – 85)	73 (64 – 80)
NT-proBNP (ng/L)	79 (38 – 180)	80 (41 – 218)	78 (37 – 118)
Glucose (mmol/L)	8.2 (6.9 – 9.4)	8.3 (6.9 – 9.5)	8.1 (6.9 – 9.3)
HbA1c (%)	5.8 (5.6 – 6.0)	5.7 (5.6 – 6.0)	5.8 (5.6 – 6.0)

Variables are expressed as n (%), mean ± SD or median (interquartile range).

was assessed using 2-way mixed intraclass correlation coefficient. Statistical significance was considered achieved with a p value <0.05. Statistical analyses were performed using SPSS statistical software for Windows (version 20, 2011).

Results

In total, 380 patients were randomized in the GIPS-III trial, and a total of 258 patients were included in the present study (Figure 1). In a large subset of patients, sufficient echocardiographic imaging was available both before

discharge and at 4 months. Baseline characteristics of the study population are outlined in Table 1.

Table 2 summarizes RV and LV function on MRI at 4 months. No patient had reduced RVEF. RVEF was not different according to culprit lesion (i.e., left anterior descending coronary artery [LAD], right coronary artery [RCA], and left circumflex coronary artery [LCX]; p = 0.11). There was no difference in RVEF between patients with LV LGE septal involvement (n = 171) and without septal involvement (n = 72); p = 0.43. RVEF was higher in women compared with men (67% vs 63%, p <0.001). Age was weakly correlated with RVEF (r = 0.15, p = 0.02). RVEF

Table 2
Right and left ventricular volumes and function

MRI after 4 months	
RV end-diastolic volume (ml)	159 ± 36
RV end-systolic volume (ml)	58 ± 18
RV ejection fraction (%)	64 ± 5
RV infarct size (%; n=5)	7.4 ± 4.9
LV end-diastolic volume (ml)	193 ± 44
LV end-systolic volume (ml)	90 ± 33
LV ejection fraction (%)	54 ± 8
LV infarct size (%; n=243)	8.9 ± 7.6
Echocardiography before discharge	
Tricuspid annular plane systolic excursion (mm)	22.8 ± 3.6
RV free wall longitudinal strain (%)	-22.6 ± 5.8
Echocardiography after 4 months	
Tricuspid annular plane systolic excursion (mm)	25.1 ± 3.9*
RV free wall longitudinal strain (%)	-25.9 ± 4.7*

Variables are expressed as mean ± standard deviation.

* $p < 0.001$ compared with value before discharge.

Table 3
Right ventricular late enhancement after 4 months

Subject	Sex/age (yrs)	Right coronary artery	RV scar size	LV scar size	Location
1	M/45	Mid	1.3%	7.0%	Inferoseptal
2	M/53	Mid	13.2%	6.5%	Inferolateral
3	M/81	Proximal	7.0%	8.9%	Inferoseptal
4	M/63	Mid	11.4%	20.6%	Inferoseptal
5	F/68	Proximal	4.1%	13.2%	Inferoseptal

was not different according to myocardial blush grade ($p = 0.24$). LVEF was fairly correlated with RVEF ($r = 0.25$, $p < 0.001$); LV end-diastolic volume index did not correlate with RVEF ($r = -0.04$, $p = 0.55$) and also LV scar size was not associated with RVEF ($r = -0.01$, $p = 0.91$). There was a slight difference in RVEF between the metformin and

placebo group (63% vs 65%, $p = 0.03$). After adjustment for age, gender and LVEF, this difference did not remain significant ($p = 0.11$). Indexed RVEDVi above normal reference values were seen in 2 patients (0.8%). RVEDVi was higher in men compared with women (80 vs 70 ml/m², $p < 0.001$) and was fairly correlated with age ($r = -0.27$, $p < 0.001$). RV LGE was detected in 5 patients (2%; Table 3). All RV infarctions were not isolated but extended throughout the inferior wall. Figure 2 is an example of such patient.

Table 2 depicts echocardiographic measurements of RV function. Before discharge, 1.6 (interquartile range 1.4 to 2.5) days after STEMI, 12 patients (5.2%) had reduced TAPSE. TAPSE values were the same among culprit vessel (i.e., RCA vs LAD, $p = 0.40$ and RCA vs LCX, $p = 0.17$). Before discharge, 46 patients (32%) had RV FWLS $> -20\%$ and 15 patients (11%) had RV FWLS $> -15\%$. RV FWLS was lower with RCA (-20.6%) than with culprit LAD (-23.6% , $p = 0.007$) or LCX (-24.9% , $p = 0.002$).

TAPSE and RV FWLS increased significantly during 4 months (Figure 3). Increase in TAPSE was the same for all culprit vessels (Figure 3). Increase in RV FWLS was more pronounced with culprit RCA (from -20.6% to -24.9% , $p < 0.001$) and LAD (from -23.6% to -26.9% , $p < 0.001$) than in patients with culprit LCX (from -24.9% to -26.0% , $p = 0.33$; Figure 3).

After 4 months, 1 patient (0.4%) had reduced TAPSE, 14 patients (10%) had RV FWLS $> -20\%$, and 2 patients (1.4%) had RV FWLS $> -15\%$. RV FWLS was significantly lower with RCA than with LAD lesions (-24.8% vs -26.9% , respectively; $p = 0.02$). There was no significant difference in RV FWLS between culprit RCA and LCX (-24.8 vs -26.0 , respectively; $p = 0.21$). There was no difference in TAPSE and RV FWLS at 4 months between patients with LGE septal involvement and without septal involvement; $p = 0.89$ and 0.98 , respectively. TAPSE was weakly correlated with LVEF ($r = 0.15$, $p = 0.02$) but not with LV infarct size ($p = 0.18$). RV FWLS was not correlated with LVEF ($r = -0.07$, $p = 0.44$) nor LV infarct size ($r = 0.03$, $p = 0.71$). There was no significant difference in

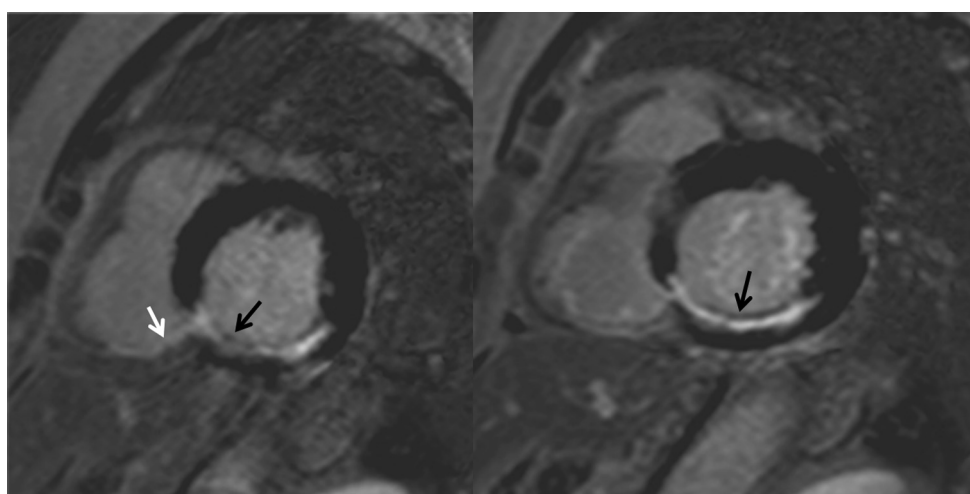


Figure 2. Inferior infarction in a 68-year-old woman with proximal RCA occlusion. Short-axis LGE imaging 4 months after PCI shows subendocardial late enhancement in the inferior and inferoseptal segments of the left ventricle and a small region of microvascular obstruction (black arrows). Late enhancement extends into the inferior segment of the right ventricle (white arrow). In this subject, both left and right ventricular function remained preserved 4 months after PCI (i.e., LVEF 53% and RVEF 68%). Echocardiographic quality was insufficient for additional strain analyses.

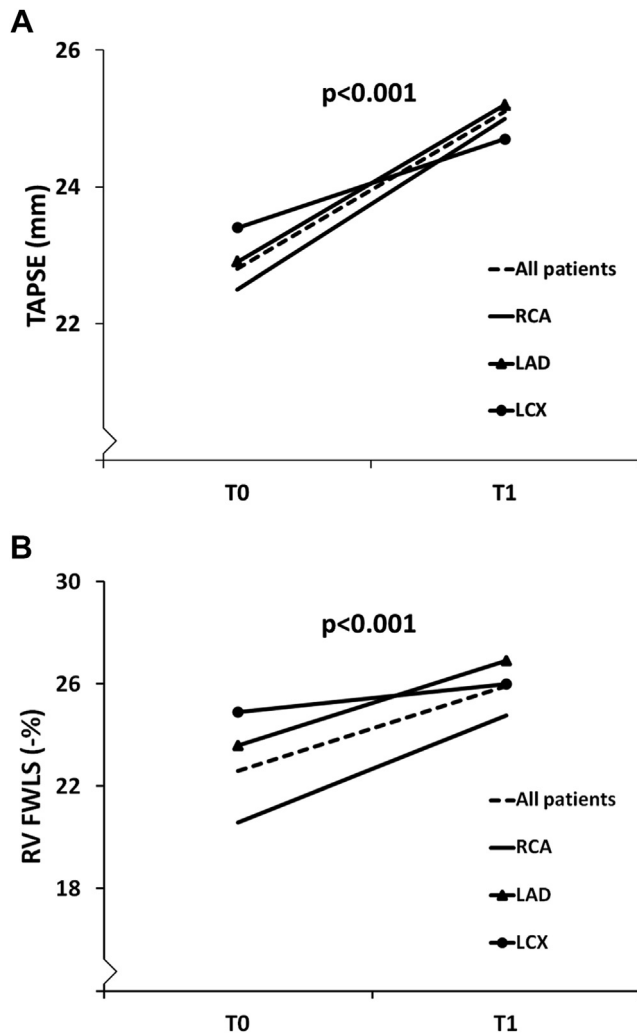


Figure 3. Change in right ventricular function after acute MI. (A): TAPSE measured before discharge (T0) increased during 4 months (T1) after acute myocardial infarction in all patients. This increase was demonstrated in all subgroups with culprit RCA ($p < 0.001$), LAD ($p < 0.001$), and LCX ($p = 0.032$). (B): RV FWLS measured before discharge (T0) increased during 4 months (T1) after acute MI in all patients. This increase was more pronounced in patients with culprit RCA ($p < 0.001$) and LAD ($p < 0.001$), than with culprit LCX ($p = 0.33$). Patients with culprit RCA had the lowest RV FWLS early and late after the infarction.

TAPSE and RV FWLS between both treatment groups ($p = 0.96$ and 0.94 , respectively).

Intraclass correlation for intraobserver variability for RV FWLS longitudinal strain was 0.70 (95% CI 0.46 to 0.84 , $p < 0.001$). For the interobserver measurements, the correlation for RV FWLS longitudinal strain was 0.76 (95% CI 0.72 to 0.94 , $p < 0.001$).

Discussion

This study demonstrated that early after primary PCI for STEMI, RV function was reduced in several patients. Yet, the RV recovered in most patients, and permanent ischemic damage of RV myocardium at 4 months was very uncommon. LV ischemic injury had almost no impact on RV global and regional function.

In contrast to the LV, the vulnerability of the RV to ischemic and reperfusion stimuli is different. In normal physiologic conditions, myocardial oxygen demand of the RV is lower than for the LV, due to lower vascular resistance in the pulmonary compared with the systemic circulation. In addition, because of the thinner free wall and less intracavitary pressure, the RV receives transmural and direct endocardial perfusion in both systole and diastole.^{18–20} Therefore, RV myocardium in the absence of coronary flow still receives a marginal amount of oxygen and nutrients, resulting in “stunning” rather than cell death.^{10,11}

More recently, Masci et al²¹ yield new insights in this myocardial stunning pattern. RV ischemic injury was reversible in 20% of cases and permanent RV myocardial damage at 4 months after STEMI was demonstrated in 10%. Our study showed an even lower incidence of irreversible damage late after STEMI. As can be expected with this low percentage of RV damage, no RV dysfunction in terms of RVEF and TAPSE was seen. Although MRI is the gold standard RV function, RVEF is a rather gross, volumetric measure. Although MRI derived myocardial strain is useful in assessing regional myocardial function of the LV,²² RV myocardium is often too thin for reliable measurements. In addition, TAPSE is an angle-dependent measurement and only represents longitudinal displacement of the tricuspid annulus. In contrast, 2-D strain echocardiography has demonstrated its value to detect subtle RV myocardial dysfunction in various cardiac diseases.^{23,24} Recently, RV global longitudinal strain (GLS) was suggested to be a strong indicator of RV systolic function and prognosis after PCI for acute MI.⁷ However, these echocardiographic assessments were performed within 3 days after PCI, after which the stunning RV may well recover. Furthermore, for RV GLS, the investigators averaged RV free wall and interventricular septal longitudinal strain measurements. Since GLS is intentionally designed for the LV, and RV geometry and contraction pattern are distinctively different, in our opinion, this method cannot be easily adopted to the RV. In the present study, RV function recovered during 4 months after the PCI. This stunning pattern was most pronounced in patients with culprit RCA and LAD, compared with LCX, in whom no post-MI RV dysfunction was observed. This observation is not unexpected because the RV is frequently involved in left-sided anterior and inferior infarctions,^{25,26} and LAD occlusion often results in apical inferior injury, which may affect the RV.²⁷

How do we explain the absence of permanent RV injury in the current cohort with large myocardial areas at risk, compared with previous studies? The principle of “time is muscle” has led to the critical threshold of < 90 minutes door-to-balloon time for primary PCI.^{28,29} However, symptom-to-balloon time may vary considerably, for instance due to differences in patient awareness or delay in emergency response. Total ischemic times varied between 211 and 297 minutes in previous studies investigating RV injury in STEMI,^{7,9,21} which is considerably lower than our 156 minutes. This is similar with previously published data of patients with STEMI in the Netherlands³⁰ and may be the result of several factors, including favorable geographic conditions and well organized multidisciplinary STEMI health care.³⁰ Early successful, primary PCI for STEMI, in a

dedicated center, might therefore prevent permanent RV ischemic injury in acute MI. However, observed differences in prevalence rates of RV dysfunction might also be attributable to variations in method and patient characteristics among studies investigating RV function after acute MI.

Some limitations merit emphasis. First, serial MRI data were lacking in this study; hence, we were not able to evaluate RV LGE early after the infarction. However, TAPSE and RV FWLS assessed before discharge was used as surrogate measure of RV involvement at baseline. Second, as 2-D strain analysis is largely dependent on image quality, RV FWLS could not be assessed in all patients and also no definite cutoffs for RV FWLS are currently available. Finally, we may have introduced a selection bias since only nondiabetic patients without previous MI or revascularization were included.

Disclosures

The authors have no conflicts of interest to disclose.

Supplementary Data

Supplementary data associated with this article can be found, in the online version, at <http://dx.doi.org/10.1016/j.amjcard.2016.05.006>.

- Zehender M, Kasper W, Kauder E, Schonthalder M, Geibel A, Olschewski M, Just H. Right ventricular infarction as an independent predictor of prognosis after acute inferior myocardial infarction. *N Engl J Med* 1993;328:981–988.
- Mehta SR, Eikelboom JW, Natarajan MK, Diaz R, Yi C, Gibbons RJ, Yusuf S. Impact of right ventricular involvement on mortality and morbidity in patients with inferior myocardial infarction. *J Am Coll Cardiol* 2001;37:37–43.
- Hamon M, Agostini D, Le Page O, Riddell JW, Hamon M. Prognostic impact of right ventricular involvement in patients with acute myocardial infarction: meta-analysis. *Crit Care Med* 2008;36:2023–2033.
- Assali AR, Teplitsky I, Ben-Dor I, Solodky A, Brosh D, Battler A, Fuchs S, Komowski R. Prognostic importance of right ventricular infarction in an acute myocardial infarction cohort referred for contemporary percutaneous reperfusion therapy. *Am Heart J* 2007;153:231–237.
- Hanzel GS, Merhi WM, O'Neill WW, Goldstein JA. Impact of mechanical reperfusion on clinical outcome in elderly patients with right ventricular infarction. *Coron Artery Dis* 2006;17:517–521.
- Antoni ML, Scherptong RW, Atary JZ, Boersma E, Holman ER, van der Wall EE, Schalij MJ, Bax JJ. Prognostic value of right ventricular function in patients after acute myocardial infarction treated with primary percutaneous coronary intervention. *Circ Cardiovasc Imaging* 2010;3:264–271.
- Park SJ, Park JH, Lee HS, Kim MS, Park YK, Park Y, Kim YJ, Lee JH, Choi SW, Jeong JO, Kwon IS, Seong IW. Impaired RV global longitudinal strain is associated with poor long-term clinical outcomes in patients with acute inferior STEMI. *JACC Cardiovasc Imaging* 2015;8:161–169.
- Jensen CJ, Jochims M, Hunold P, Sabin GV, Schlosser T, Bruder O. Right ventricular involvement in acute left ventricular myocardial infarction: prognostic implications of MRI findings. *AJR Am J Roentgenol* 2010;194:592–598.
- Grothoff M, Elpert C, Hoffmann J, Zachrau J, Lehmkühl L, de Waha S, Desch S, Eitel I, Mende M, Thiele H, Guterberlet M. Right ventricular injury in ST-elevation myocardial infarction: risk stratification by visualization of wall motion, edema, and delayed-enhancement cardiac magnetic resonance. *Circ Cardiovasc Imaging* 2012;5:60–68.
- Ramzy IS, O'Sullivan CA, Lam YY, Dancy M, Tei C, Henein MY. Right ventricular stunning in inferior myocardial infarction. *Int J Cardiol* 2009;136:294–299.
- Bowers TR, O'Neill WW, Grines C, Pica MC, Safian RD, Goldstein JA. Effect of reperfusion on biventricular function and survival after right ventricular infarction. *N Engl J Med* 1998;338:933–940.
- Lexis CP, van der Horst IC, Lipsic E, Wieringa WG, de Boer RA, van den Heuvel AF, van der Werf HW, Schurer RA, Pundziute G, Tan ES, Nieuwland W, Willemsen HM, Dorhout B, Molmans BH, van der Horst-Schrivers AN, Wolffenbuttel BH, ter Horst GJ, van Rossum AC, Tijssen JG, Hillege HL, de Smet BJ, van der Harst P, van Veldhuisen DJ; GIPS-III Investigators. Effect of metformin on left ventricular function after acute myocardial infarction in patients without diabetes: the GIPS-III randomized clinical trial. *JAMA* 2014;311:1526–1535.
- Lexis CP, van der Horst IC, Lipsic E, van der Harst P, van der Horst-Schrivers AN, Wolffenbuttel BH, de Boer RA, van Rossum AC, van Veldhuisen DJ, de Smet BJ; GIPS-III Investigators. Metformin in nondiabetic patients presenting with ST elevation myocardial infarction: rationale and design of the glycometabolic intervention as adjunct to primary percutaneous intervention in ST elevation myocardial infarction (GIPS-III) trial. *Cardiovasc Drugs Ther* 2012;26:417–426.
- Alfakih K, Plein S, Thiele H, Jones T, Ridgway JP, Sivananthan MU. Normal human left and right ventricular dimensions for MRI as assessed by turbo gradient echo and steady-state free precession imaging sequences. *J Magn Reson Imaging* 2003;17:323–329.
- Mosteller RD. Simplified calculation of body-surface area. *N Engl J Med* 1987;317:1098.
- Lang RM, Badano LP, Mor-Avi V, Afilalo J, Armstrong A, Ernande L, Flachskampf FA, Foster E, Goldstein SA, Kuznetsova T, Lancellotti P, Muraru D, Picard MH, Rietzschel ER, Rudski L, Spencer KT, Tsang W, Voigt JU. Recommendations for cardiac chamber quantification by echocardiography in adults: an update from the American Society of Echocardiography and the European Association of Cardiovascular Imaging. *J Am Soc Echocardiogr* 2015;28:1–39e14.
- Fine NM, Chen L, Bastiansen PM, Frantz RP, Pellikka PA, Oh JK, Kane GC. Outcome prediction by quantitative right ventricular function assessment in 575 subjects evaluated for pulmonary hypertension. *Circ Cardiovasc Imaging* 2013;6:711–721.
- Dell'Italia LJ. The right ventricle: anatomy, physiology, and clinical importance. *Curr Probl Cardiol* 1991;16:653–720.
- Lee FA. Hemodynamics of the right ventricle in normal and disease states. *Cardiol Clin* 1992;10:59–67.
- Kinch JW, Ryan TJ. Right ventricular infarction. *N Engl J Med* 1994;330:1211–1217.
- Masci PG, Francone M, Desmet W, Ganame J, Todiere G, Donato R, Siciliano V, Carbone I, Mangia M, Strata E, Catalano C, Lombardi M, Agati L, Janssens S, Bogaert J. Right ventricular ischemic injury in patients with acute ST-segment elevation myocardial infarction: characterization with cardiovascular magnetic resonance. *Circulation* 2010;122:1405–1412.
- Gotte MJ, Germans T, Russel IK, Zwanenburg JJ, Marcus JT, van Rossum AC, van Veldhuisen DJ. Myocardial strain and torsion quantified by cardiovascular magnetic resonance tissue tagging: studies in normal and impaired left ventricular function. *J Am Coll Cardiol* 2006;48:2002–2011.
- Abraham TP, Dimaano VL, Liang HY. Role of tissue Doppler and strain echocardiography in current clinical practice. *Circulation* 2007;116:2597–2609.
- Giusca S, Dambrauskaitė V, Scheurwegs C, D'hooge J, Claus P, Herbots L, Magro M, Rademakers F, Meyns B, Delcroix M, Voigt JU. Deformation imaging describes right ventricular function better than longitudinal displacement of the tricuspid ring. *Heart* 2010;96:281–288.
- Isner JM, Roberts WC. Right ventricular infarction complicating left ventricular infarction secondary to coronary heart disease. Frequency, location, associated findings and significance from analysis of 236 necropsy patients with acute or healed myocardial infarction. *Am J Cardiol* 1978;42:885–894.
- Ratliff NB, Hackel DB. Combined right and left ventricular infarction: pathogenesis and clinicopathologic correlations. *Am J Cardiol* 1980;45:217–221.
- Kobayashi N, Maehara A, Mintz GS, Wolff SD, Geneux P, Xu K, Mehran R, Gibson CM, Brener SJ, Stone GW. Usefulness of the left anterior descending artery wrapping around the left ventricular apex to predict adverse clinical outcomes in patients with anterior wall ST-segment elevation myocardial infarction (an INFUSE-AMI substudy). *Am J Cardiol* 2015;115:1389–1395.

28. Reimer KA, Jennings RB. The “wavefront phenomenon” of myocardial ischemic cell death. II. Transmural progression of necrosis within the framework of ischemic bed size (myocardium at risk) and collateral flow. *Lab Invest* 1979;40:633–644.
29. Antman EM. Time is muscle: translation into practice. *J Am Coll Cardiol* 2008;52:1216–1221.
30. Atary JZ, de Visser M, van den Dijk R, Bosch J, Liem SS, Antoni ML, Bootsma M, Viergever EP, Kirchhof GJ, Padmos I, Sedney MI, van Exel MJ, Verwey HF, Atsma DE, van der Wal EE, Jukema JW, Schalij MJ. Standardised pre-hospital care of acute myocardial infarction patients: MISSION! guidelines applied in practice. *Neth Heart J* 2010;18:408–415.