

University of Groningen

Ageing of innate immunity in health and vasculitic diseases

Wang, Qi

IMPORTANT NOTE: You are advised to consult the publisher's version (publisher's PDF) if you wish to cite from it. Please check the document version below.

Document Version

Publisher's PDF, also known as Version of record

Publication date:

2016

[Link to publication in University of Groningen/UMCG research database](#)

Citation for published version (APA):

Wang, Q. (2016). *Ageing of innate immunity in health and vasculitic diseases*. [Thesis fully internal (DIV), University of Groningen]. Rijksuniversiteit Groningen.

Copyright

Other than for strictly personal use, it is not permitted to download or to forward/distribute the text or part of it without the consent of the author(s) and/or copyright holder(s), unless the work is under an open content license (like Creative Commons).

The publication may also be distributed here under the terms of Article 25fa of the Dutch Copyright Act, indicated by the "Taverne" license. More information can be found on the University of Groningen website: <https://www.rug.nl/library/open-access/self-archiving-pure/taverne-amendment>.

Take-down policy

If you believe that this document breaches copyright please contact us providing details, and we will remove access to the work immediately and investigate your claim.

Downloaded from the University of Groningen/UMCG research database (Pure): <http://www.rug.nl/research/portal>. For technical reasons the number of authors shown on this cover page is limited to 10 maximum.

CHAPTER

General introduction
and outline of the thesis

1



AGEING OF THE IMMUNE SYSTEM

Ageing has profound effects on all cells and tissues of a living organism, including those of the immune system [1]. Age-related alterations of the immune system, termed immunosenescence, have a strong clinical impact and may underlie increased susceptibility to infections, chronic diseases and impaired responses to vaccination in the elderly [2-4]. Ageing applies to all cells of the immune system and thus affects both innate and adaptive immune responses. Immunosenescence may have a profound impact on development and progression of age-associated diseases including specific systemic vasculitides such as anti-neutrophil cytoplasmic autoantibody associated small vessel vasculitis (AAV) and giant cell arteritis (GCA). In this introduction, the main age-related alterations in innate and adaptive immune components and responses will be briefly reviewed. In addition, age-associated vasculitides, AAV and GCA will be introduced.

AGEING AND ADAPTIVE IMMUNITY

Adaptive immune responses decline with age as evidenced by decreased delayed type hypersensitivity responses (e.g. tuberculin skin test) in elderly people. The main characteristic of adaptive immunity is the ability to deal with pathogens/insults in an antigen-specific manner and to develop antigen-specific memory cells to deal more efficiently with pathogens/insults upon recall exposure (second contact with the same antigen). The effects of ageing on the adaptive immune system have been reviewed recently by Frasca et al [5] and are summarized in Figure 1. In brief, ageing of the adaptive immune system is characterized by a reduced output of naïve B and T cells and by a proportional increase in memory B and T cells as a result of the growing number of environmental challenges as we age. Due to a reduction in bone marrow output of progenitor cells (common lymphocyte precursors) and thymic involution in young adulthood, the production of naïve B and T cells gradually declines with age whereas the number of antigen-experienced memory and, in particular, effector T cells increases [6, 7]. As a result, the diversity of the TCR repertoire decreases with ageing. Of note, also the effector T cell proliferative capacity becomes more limited, as a result of shortened telomeres. However, aged effector T cells show an increased resistance to programmed cell death [8, 9]. Taken together, reduced diversity and functionality of the T cell repertoire with ageing likely underlies reduced capability to mediate effective immune responses against new antigens in the elderly. Thymic involution also leads to a decreased output of naïve regulatory T cells (Tregs) which may contribute to development of age-related autoimmune diseases [10]. Conversely, numbers of the induced Treg (iTreg) appear to increase with age leading to increased Treg/Teffector ratios which may add to

the reduced effector responses seen with ageing [11]. Similar to the T cell pool, the aged peripheral B cell pool fills up with antigen-experienced memory cells at the expense of a concurrent replacement of naive B cells, which also limits diversity of the B cell repertoire [12]. Moreover, ageing-related failure of negative selection and loss of B cell function will contribute to a decrease of antibody affinity and an increase of autoreactive antibodies [8, 13-15].

AGEING AND INNATE IMMUNITY

Whilst adaptive immune responses decline with age, the basal activity of the innate immune system appears to increase with age. This chronic, low grade inflammation (termed inflamm-ageing) seen with ageing is evidenced by increased serum levels of inflammatory cytokines (e.g. Interleukin (IL)-1 β , IL-6, IL-8 and Tumor necrosis factor (TNF- α) and acute phase proteins. In aged subjects, alterations in production of inflammatory mediators might be caused by pre-existing conditions such as autoimmune or degenerative diseases, cancer, frailty, or other factors. Alternatively, the accumulation of these cytokines and acute phase proteins may create a pro-inflammatory environment that might accelerate the development of autoimmune diseases [1].

Cumulative evidence indicates that ageing exerts significant effects on all cells of the innate immune system [16]. These ageing-associated changes impact both numbers and functions of multiple innate immune cell types as will be briefly discussed in the next paragraphs (Figure 1).

Impact of ageing on monocytes

Monocytes originate from myeloid stem cell progenitors and differentiate into macrophages and dendritic cells (DC). Three main monocyte subsets can be classified by distinct transcriptional and functional characteristics: classical monocytes (CD14^{bright}CD16⁻), intermediate monocytes (CD14^{bright}CD16⁺) and non-classical monocytes (CD14^{dim}CD16⁺) [17] (Figure 2). Classical monocytes form the majority of monocytes in the peripheral blood and display a high antimicrobial capability owing to their potent capacity for phagocytosis and their enhanced production of antimicrobial proteins. CD16⁺ monocytes (i.e. intermediate and non-classical monocytes) display inflammatory characteristics by producing pro-inflammatory cytokines upon activation and show features of antigen presenting cells [18]. Monocytes can migrate to peripheral tissues to give rise to macrophages and dendritic cells. The migratory properties of monocyte subsets are differentially regulated based on their chemokine receptors expression profiles [19]. Classical monocytes show a markedly higher CCR2 expression but low CX3CR1 expression, whereas non-classical monocytes show high CX3CR1 expression but no CCR2

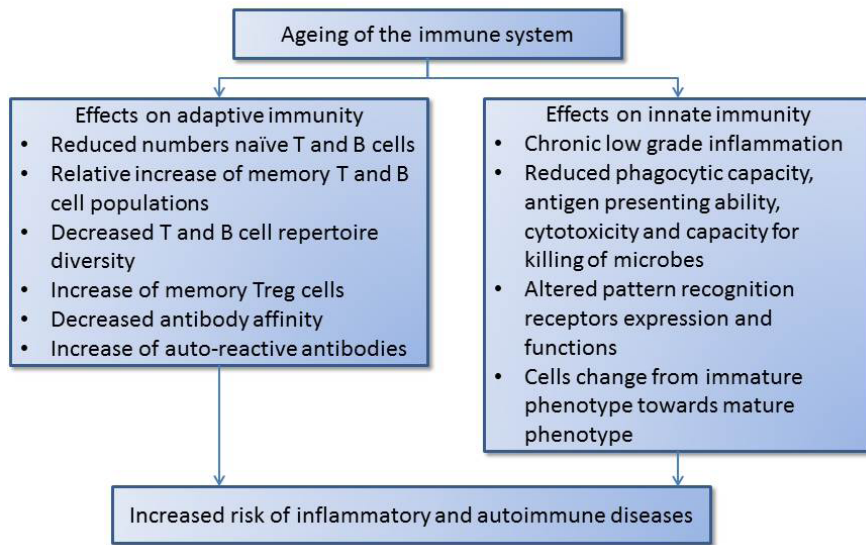


Figure 1. Major changes of the immune system with ageing. Ageing has profound effects on both innate and adaptive arms of the immune system. Treg = T regulatory cell.

expression and intermediate monocytes show low levels of CCR2, but high levels of both CX3CR1 and CCR5. Transcriptional profiling suggests that monocytes expressing CD16 (both intermediate and non-classical subsets) exhibit a phenotype resembling dendritic cells (DCs) and macrophages [20], plus they exhibit an increased capacity to adhere to endothelial cells and thereby more readily migrate across the endothelium [21, 22]. In light of information derived from murine studies, the majority of experts favor a theory for the development of human monocyte subsets whereby classical monocytes leave the bone marrow and enter the peripheral circulation. Moreover, a developmental relationship is assumed for classical monocytes to develop into intermediate monocytes, some of which could finally develop into non-classical monocytes [23].

Absolute numbers of monocytes in elderly individuals were found unchanged compared to young subjects in two studies [24, 25]. Yet, another study with smaller sample sizes reported on increased numbers of monocytes in elderly when compared to young individuals [26]. In line with this notion, increasing age is associated with a shift within monocyte subsets. Proportions and numbers of CD16+ monocytes are increased while proportions of the classical monocytes are decreased in aged subjects [27]. Moreover, non-classical monocytes demonstrate shorter telomeres and express the senescence-associated marker β -galactosidase, suggesting that this subset indeed represents a more aged phenotype [21].

A number of studies confirmed that monocyte function is compromised with age (Figure 2). Firstly, the phagocytic capacity of monocytes and macrophages is impaired with age [28, 29]. Secondly, their ability to process antigens and present peptides to T cells is also hampered by ageing evidenced by decreased levels of Major histocompatibility complex (MHC) class II molecules [30, 31]. Thirdly, spontaneous production of pro-inflammatory cytokines such as IL-6 is increased in the elderly individuals [32]. Finally, the expression and function of pattern recognition receptors (PRR) which recognize pathogen associated molecular

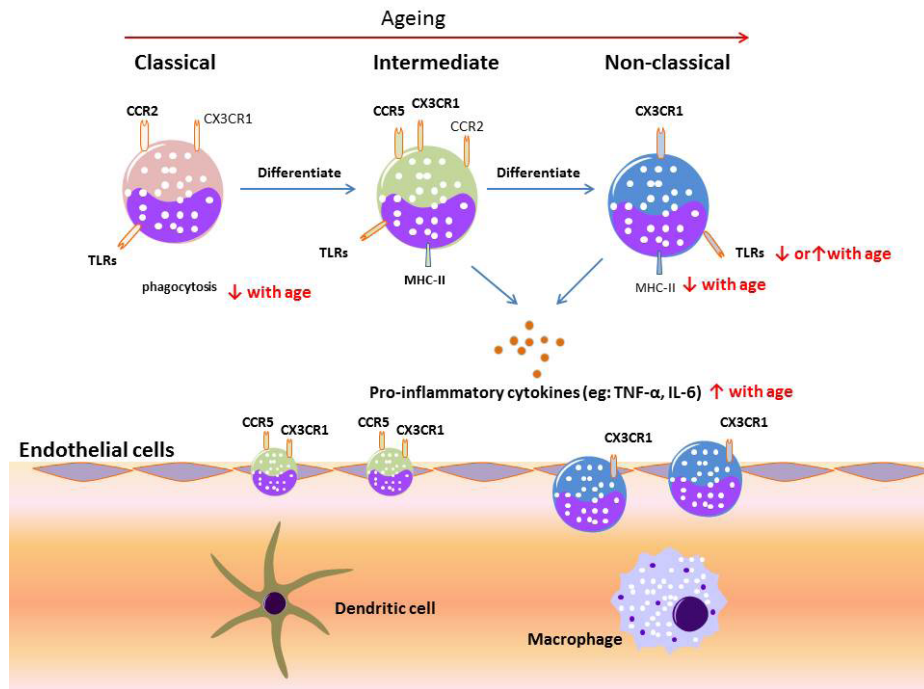


Figure 2. The potential functional roles of monocyte subsets and their alterations upon ageing. Most experts accept that monocytes leave the bone marrow as classical monocytes (CD14^{bright}CD16⁻), which have high antimicrobial capability owing to their potent capacity for phagocytosis and their enhanced production of antimicrobial proteins. Their phagocytosis capacity is compromised with age. Classical monocytes can differentiate into intermediate (CD14^{bright}CD16⁺) monocytes and further differentiate into non-classical monocytes (CD14^{dim}CD16⁺) in the circulation. Numbers of CD16⁺ monocytes (intermediate and non-classical monocytes) accumulate upon ageing. CD16⁺ monocytes' antigen presentation capacity is down-modulated evidenced by decreased expression of MHC-II molecules. Toll-like receptors (TLRs) expressions on the monocytes are also modulated by ageing. Moreover, CD16⁺ monocytes produce high levels of inflammatory mediators (such as TNF and IL-1 β) and their production increases with age. Chemokine receptors CX3CR1 mediate adhesion of intermediate and non-classical monocytes to facilitate endothelial migration, renewing the macrophage and dendritic cell pool in the tissue.

patterns (PAMPs) is also altered by ageing. Several studies have analyzed expression of PRR and PRR cytokine responses and how they are affected by age. Most studies mainly focused on analysis of Toll-like receptors (TLRs) expression and cytokine responses. It has been reported that monocyte subsets in the elderly individuals demonstrate a reduced capacity to produce IL-6 and TNF- α upon TLR1/TLR2 stimulation [33]. In addition, IL-6 synthesis in response to a TLR7/8 ligand was also diminished in monocytes from older adults [33]. Conversely, an elevated TLR5 expression and Mitogen-activated protein kinases (MAPK) signaling was reported resulting in higher IL-8 production by monocytes of older adults [34]. These changes in specific TLRs expression levels and responses to specific ligands may underlie impaired responses to specific classes of pathogens contributing to the increased rate of infections in elderly individuals. Alternatively, some pathogens sensed by specific TLRs may elicit higher inflammatory responses in elderly and contribute to inflammageing [35]. Last but not least, the function of monocyte-derived cell types, such as macrophages and DCs are also compromised with age. For instance, dysregulation of TLR3 responses following infection of aged human macrophages with West Nile Virus was reported [36]. Likewise, defects in cytokine production by DC upon stimulation of multiple TLRs in elderly individuals has been observed [37]. Thus, alterations of monocyte function with ageing may well contribute to the imbalance of inflammatory and anti-inflammatory responses in elderly individuals.

Impact of ageing on neutrophils

Neutrophils are the most abundant leukocytes in the peripheral blood compartment. Typically, they are the first immune cells recruited to the site of infection by chemokines and products released from microorganisms [38]. Studies have demonstrated that age does not modify the total number of circulating neutrophils [16]. However, the neutrophil's response to survival components such as GM-CSF in elderly individuals is reduced following infection [39]. Research spanning two decades has shown that many aspects of neutrophil function such as phagocytic capacity, synthesis of reactive oxygen species (ROS), chemotactic activity and migration accuracy are compromised in elderly [40-44]. As a consequence, the efficiency of neutrophils in the removal of microbes is decreased in the elderly individuals. Thus, reduced neutrophil function with ageing affects the first line response to infection in elderly individuals and may inadvertently cause tissue damage [44].

Impact of ageing on natural killer (NK) cells

NK cells are innate cytotoxic lymphocytes that play an important role in host defense against certain malignancies and viral infections [45]. It appears that there is an age-related increase in the overall numbers of circulating NK cells in humans [46, 47]. At the same time, a phenotypical change of NK cells in elderly

individuals from immature CD56^{bright} NK cells toward mature CD56^{dim} NK cells has been reported [48]. This may lead to a decreased production of chemokines in response to IL-2 or IL-12 in NK cells from elderly individuals as chemokines are mainly produced by CD56^{bright} NK cells [49]. Although it was reported that there is an age-associated defect in NK cytotoxicity based on per cell analysis [50], overall NK cell cytotoxicity is largely maintained in healthy elderly individuals which may be due to the increase in total circulating NK cells [42]. As NK cells interact with monocytes promoting inflammation and also induce DC maturation, age-related changes of NK cell function are likely to contribute to dysregulation of other cells as well [51, 52]. Further studies are needed to unravel the consequences of aged NK cell function on other cellular traits and functions in the immune system.

VASCULITIS

Vasculitis is an inflammatory process targeting the vessel wall as the primary site of inflammation. The vasculitis process may affect vessels of any type or any size including capillaries, venules, arterioles, veins and arteries. The most recent classification of systemic vasculitides as proposed by the 2012 International Chapel Hill Consensus Conference is based on the size of vessels involved and specific clinical and pathological features (Table 1) [53]. Notably, some of these vasculitides, such as anti-neutrophil cytoplasmic antibody (ANCA)-associated vasculitis (AAV) and giant cell arteritis (GCA) primarily affect elderly individuals. Evidence has accumulated that abnormalities in adaptive immunity as well as innate immunity play a critical role in initiation and the perpetuation of AAV and GCA.

ANCA-associated vasculitis

Anti-neutrophil cytoplasmic antibody (ANCA)-associated vasculitis (AAV) is a life-threatening, small vessel vasculitis that is characterized by the presence of pathogenic autoantibodies against the neutrophil and monocyte lysosomal enzymes proteinase-3 (PR3) or myeloperoxidase (MPO). AAV can manifest in any organ of the body, but most frequently affects the upper and lower respiratory tract and kidneys [54]. AAV is predominantly a disease of the elderly. The incidence of AAV increases with age, peaking in those aged 65 to 74 years, and age is a predictor of disease outcome as older patients usually have a poorer prognosis. Animal models of AAV have provided important insights into the pathogenesis of AAV [55]. Based on clinical, *in vitro* and *in vivo* experimental observations, the pathogenesis of acute AAV is thought to involve a series of sequential inflammatory events that eventually cause vessel injury [56]. In brief, ANCAs and pro-inflammatory stimuli, most likely of infectious origin, synergize to cause a destructive inflammatory process [56]. A central event in this process is ANCA-

Table 1. Names of vasculitides adopted by the 2012 International Chapel Hill Consensus Conference on the Nomenclature of Vasculitides [53]**Large vessel vasculitis (LVV)**

Takayasu arteritis (TAK)
Giant cell arteritis (GCA)

Medium vessel vasculitis (MVV)

Polyarteritis nodosa (PAN)
Kawasaki disease (KD)

Small vessel vasculitis (SVV)

Antineutrophil cytoplasmic antibody (ANCA)-associated vasculitis (AAV)
Microscopic polyangiitis (MPA)
Granulomatosis with polyangiitis (Wegener's) (GPA)
Eosinophilic granulomatosis with polyangiitis (Churg-Strauss) (EGPA)
Immune complex SVV
Anti-glomerular basement membrane (anti-GBM) disease
Cryoglobulinemic vasculitis (CV)
IgA vasculitis (Henoch-Schönlein) (IgAV)
Hypocomplementemic urticarial vasculitis (HUV) (anti-C1q vasculitis)

Variable vessel vasculitis (VVV)

Behcet's disease (BD)
Cogan's syndrome (CS)

Single-organ vasculitis (SOV)

Cutaneous leukocytoclastic angiitis
Cutaneous arteritis
Primary central nervous system vasculitis Isolated aortitis
Others

Vasculitis associated with systemic disease

Lupus vasculitis
Rheumatoid vasculitis
Sarcoid vasculitis
Others

Vasculitis associated with probable etiology

Hepatitis C virus-associated cryoglobulinemic vasculitis
Hepatitis B virus-associated vasculitis
Syphilis-associated aortitis
Drug-associated immune complex vasculitis
Drug-associated ANCA-associated vasculitis
Cancer-associated vasculitis
Others

mediated activation of neutrophils [57]. Full-blown ANCA-mediated neutrophil activation is dependent on priming with pro-inflammatory stimuli that causes translocation of ANCA antigens to the cell surface [58]. Following interaction of the F(ab)₂ portion of ANCAs with ANCA antigens on the cell surface, and binding of the Fc portion to Fc receptors, neutrophils become activated releasing reactive oxygen species and proteolytic enzymes [59, 60]. Importantly, ANCAs also increase neutrophil adherence to endothelial monolayers [61] and co-incubation of ANCA-activated neutrophils and endothelial cells results in endothelial cell lysis in vitro [62]. In addition to neutrophils, it has been shown that monocytes can be activated by ANCA as well, thereby contributing to an inflammatory environment [63, 64]. It is conceivable that the age-related alterations in immune cell distribution and function, especially inflamm-ageing, may well contribute to the severity of AAV in elderly individuals.

Giant cell arteritis (GCA) and Polymyalgia rheumatica (PMR)

Giant cell arteritis (GCA) is a systemic large vessel vasculitis which predominantly affects large and medium-sized arteries, with a predilection for the cranial branches of the aorta. Due to luminal occlusion, GCA results in a series of classic symptoms, such as headache, blindness, and stroke [65]. Polymyalgia rheumatica (PMR) is a closely related inflammatory disease characterized by systemic inflammation and pain and stiffness of both shoulders and hips [66]. GCA and PMR are known to frequently co-occur, as 50% of GCA patients also have PMR. The immunopathogenesis of GCA and PMR is complex and not yet well understood. Of note, it has been proposed that age-related abnormalities in both innate and adaptive immunity create a state of chronic inflammation and impair immune responses against pathogens, thereby rendering a subset of elderly individuals more vulnerable to GCA and PMR development. Several pathogenetic mechanisms in GCA and PMR may provide clues to this hypothesis. Firstly, ageing may shift the balance of anti-inflammation towards pro-inflammation, as seen by increased levels of the ageing-associated pro-inflammatory cytokine IL-6 in GCA and PMR [67]. Secondly, ageing may affect DC migration [68]. Indeed, misdirected DC populations in GCA lesions were found to display abnormal chemokine receptor expressions [69]. Thirdly, aged (CD16+ monocytes) monocytes may contribute to the Th1 and Th17 bias [70] as these T helper cells are expanded both in the GCA artery lesion and GCA peripheral blood [71, 72]. Fourthly, aged monocytes may be precursors of tissue destructive macrophages in vascular lesions in GCA. Lastly, dysfunction of monocytes during ageing such as decreased TLR7 responses [33] are also found in active GCA/PMR patients [73]. Further studies are needed to precisely define how immunosenescence may contribute to GCA and PMR development in the aged population.

Clinical challenges in treatment and prognosis of GCA/PMR

Corticosteroid therapy is currently the first choice treatment option for GCA and PMR, but long-term corticosteroid therapy is associated with severe side effects [74]. Mixed efficacy of methotrexate has been observed in PMR patients [75]. The role of glucocorticosteroid-sparing agents, such as leflunomide (LEF) and biological therapies such as IL-6 receptor blocking therapy (Tocilizumab) are subject of current studies [76]. An improved understanding of the immunopathogenesis of GCA and PMR may eventually lead to highly needed alternative treatment options for GCA and PMR patients. Identifying prognostic biomarkers will be important to develop therapeutic strategies based on relapse risk. For clinical prognosis of GCA and PMR, traditional biomarkers such as erythrocyte sedimentation rate (ESR) and C-Reactive Protein (CRP) are not disease-specific and lack accuracy for predicting disease relapses [77-79]. Thus, there is a great need for a disease-specific biomarker for GCA and PMR.

AIM AND OUTLINE OF THIS THESIS

Ageing is associated with a dysregulated immune and inflammatory response which likely contributes to the increased incidence of chronic immune mediated diseases in elderly individuals. This thesis aimed to explore numerical, phenotypical and functional changes in the innate arm of the immune system during the ageing process in healthy as well as in age-related vasculitides such as ANCA-associated vasculitis and GCA/PMR. We hypothesized that immunosenescence contributes to the development of ageing-associated vasculitic diseases. More specifically, we hypothesized that age-related changes in the immune system affect severity of experimental ANCA-associated vasculitis and that aged monocytes in particular contribute to the immunopathogenesis of GCA/PMR. New insights may lead to improved care and treatment options for ANCA-associated vasculitis and GCA/PMR patients.

In **chapter 2**, we aimed to determine the effect of age and inflammageing on the development of ANCA-associated vasculitis. Applying a mouse model of anti-MPO-mediated glomerulonephritis based on passive transfer of mouse anti-mouse MPO antibodies and systemic administration of lipopolysaccharide as a pro-inflammatory stimulus, we hypothesized that aged mice (18 months old) develop more severe clinical and pathological disease compared to young mice (3 months old). In addition, we investigated whether age-related changes in the immune system and/or kidney affected the severity of anti-MPO IgG/LPS induced glomerulonephritis.

Innate immune cells are able to recognize PAMPs of microorganisms such as bacteria, parasites, fungi and viruses [80]. Sensing of PAMPs by the innate immune system is provided by several PRRs. In **chapter 3**, we investigated whether ageing affects cytokine responses to a wide range of well-defined PRR ligands, such

as ligands for TLRs, C-type lectin receptors (CLRs), NOD-like receptors (NLRs), retinoic-acid-inducible gene-I like receptors (RLRs) and the cytosolic DNA sensor absent in melanoma 2 (AIM2). Also, we investigated the expression of PRRs on innate immune cells in young versus old individuals.

Of the innate immune cells, monocytes are considered key players of inflammation and pathogen challenge. In **chapter 4**, we investigated how ageing affects classical monocytes (CD14^{bright}CD16⁻), intermediate monocytes (CD14^{bright}CD16⁺) and non-classical monocytes (CD14^{dim}CD16⁺) subsets and their cytokine (pro- and anti-inflammatory) responses to defined TLR receptor ligands.

Tissue migration of monocytes into the vessel wall contributes to the onset and progression of GCA. We hypothesised that ageing-related, pro-inflammatory CD16⁺ monocyte subsets contribute to the pathogenesis of GCA and PMR. In **chapter 5**, we therefore assessed the distribution of the three different monocyte subsets in GCA and PMR patients when compared to healthy controls. Next, we investigated their traits in the vascular wall of the temporal artery in GCA patients and studied expression of defined chemokine receptors and chemokines likely to be involved in migration of monocytes into the vascular wall in GCA. Lastly, in **chapter 6** we investigated whether numbers of circulating CD16⁺ monocytes can be of use as a prognostic bio-marker for relapse in GCA or PMR patients.

Finally, in **chapter 7**, the results and implications of the studies described in this thesis are discussed and recommendations for future research are given.

REFERENCES

1. Boots AM, Maier AB, Stinissen P, et al. The influence of ageing on the development and management of rheumatoid arthritis. *Nature Reviews Rheumatology* 2013;9(10):604-13
2. Fulop T, Kotb R, Fortin CF, et al. Potential role of immunosenescence in cancer development. *Annals of the New York Academy of Sciences* 2010;1197(1):158-65
3. Poland GA, Ovsyannikova IG, Kennedy RB, et al. A systems biology approach to the effect of aging, immunosenescence and vaccine response. *Current opinion in immunology* 2014;29:62-68
4. Yoshikawa TT. Epidemiology and unique aspects of aging and infectious diseases. *Clinical Infectious Diseases* 2000;30(6):931-33
5. Frasca D, Blomberg BB. Inflammaging decreases adaptive and innate immune responses in mice and humans. *Biogerontology* 2016;17(1):7-19
6. Aspinall R, Andrew D. Thymic involution in aging. *Journal of Clinical Immunology* 2000;20(4):250-56
7. Linton PJ, Dorshkind K. Age-related changes in lymphocyte development and function. *Nature immunology* 2004;5(2):133-39
8. Weiskopf D, Weinberger B, Grubeck-Loebenstien B. The aging of the immune system. *Transplant International* 2009;22(11):1041-50
9. Akbar AN, Fletcher JM. Memory T cell homeostasis and senescence during aging. *Current opinion in immunology* 2005;17(5):480-85

10. DeJaco C, Duftner C, Grubeck-Loeben B, et al. Imbalance of regulatory T cells in human autoimmune diseases. *Immunology* 2006;117(3):289-300
11. van der Geest KS, Abdulhad WH, Tete SM, et al. Aging disturbs the balance between effector and regulatory CD4+ T cells. *Experimental gerontology* 2014;60:190-96
12. Massoud A, Rezaei N. *Immunology of Aging*: Springer, 2014.
13. van der Geest KS, Lorencetti PG, Abdulhad WH, et al. Aging-dependent decline of IL-10 producing B cells coincides with production of antinuclear antibodies but not rheumatoid factors. *Experimental gerontology* 2016;75:24-29
14. Hampe CS. B cells in autoimmune diseases. *Scientifica* 2012;2012 pii: 215308.
15. Weksler ME. Changes in the B-cell repertoire with age. *Vaccine* 2000;18(16):1624-28
16. Gomez CR, Nomellini V, Faunce DE, et al. Innate immunity and aging. *Experimental gerontology* 2008;43(8):718-28
17. Ziegler-Heitbrock L, Ancuta P, Crowe S, et al. Nomenclature of monocytes and dendritic cells in blood. *Blood* 2010;116(16):e74-e80
18. Mukherjee R, Kanti Barman P, Kumar Thatoi P, et al. Non-Classical monocytes display inflammatory features: Validation in Sepsis and Systemic Lupus Erythematosus. *Scientific reports* 2015;5:13886
19. Zimmermann HW, Trautwein C, Tacke F. Functional role of monocytes and macrophages for the inflammatory response in acute liver injury. *Frontiers in Physiology* 2012;3:56
20. Ancuta P, Liu K-Y, Misra V, et al. Transcriptional profiling reveals developmental relationship and distinct biological functions of CD16+ and CD16- monocyte subsets. *BMC genomics* 2009;10(1):1
21. Merino A, Buendia P, Martin-Malo A, et al. Senescent CD14+ CD16+ monocytes exhibit proinflammatory and proatherosclerotic activity. *The Journal of Immunology* 2011;186(3):1809-15
22. Zimmermann HW, Bruns T, Weston CJ, et al. Bidirectional transendothelial migration of monocytes across hepatic sinusoidal endothelium shapes monocyte differentiation and regulates the balance between immunity and tolerance in liver. *Hepatology* 2016;63(1):233-46
23. Heine GH, Ortiz A, Massy ZA, et al. Monocyte subpopulations and cardiovascular risk in chronic kidney disease. *Nature Reviews Nephrology* 2012;8(6):362-69
24. Maes M, DeVos N, Wauters A, et al. Inflammatory markers in younger vs elderly normal volunteers and in patients with Alzheimer's disease. *Journal of psychiatric research* 1999;33(5):397-405
25. Ratts RB, Weng N-P. Homeostasis of lymphocytes and monocytes in frequent blood donors. *Front Immunol* 2012;3:271
26. Krabbe KS, Bruunsgaard H, Hansen CM, et al. Ageing is associated with a prolonged fever response in human endotoxemia. *Clinical and diagnostic laboratory immunology* 2001;8(2):333-38
27. Nyugen J, Agrawal S, Gollapudi S, et al. Impaired functions of peripheral blood monocyte subpopulations in aged humans. *Journal of Clinical Immunology* 2010;30(6):806-13
28. Hearps AC, Martin GE, Angelovich TA, et al. Aging is associated with chronic innate immune activation and dysregulation of monocyte phenotype and function. *Aging cell* 2012;11(5):867-75
29. Fietta A, Merlini C, Dos Santos C, et al. Influence of aging on some specific and nonspecific mechanisms of the host defense system in 146 healthy subjects. *Gerontology* 1994;40(5):237-45
30. Zissel G, Schlaak M, Müller-Quernheim J. Age-related decrease in accessory cell function of human alveolar macrophages. *Journal of investigative medicine: the official publication of*

- the American Federation for Clinical Research 1999;47(1):51-56
31. Herrero C, Sebastián C, Marqués L, et al. Immunosenescence of macrophages: reduced MHC class II gene expression. *Experimental gerontology* 2002;37(2):389-94
 32. Roubenoff R, Harris TB, Abad LW, et al. Monocyte cytokine production in an elderly population: effect of age and inflammation. *The Journals of Gerontology Series A: Biological Sciences and Medical Sciences* 1998;53(1):M20-M26
 33. van Duin D, Mohanty S, Thomas V, et al. Age-associated defect in human TLR-1/2 function. *The Journal of Immunology* 2007;178(2):970-75
 34. Qian F, Wang X, Zhang L, et al. Age-associated elevation in TLR5 leads to increased inflammatory responses in the elderly. *Aging cell* 2012;11(1):104-10
 35. Olivieri F, Rippon MR, Prattichizzo F, et al. Toll like receptor signaling in "inflammaging": microRNA as new players. *Immunity & Ageing* 2013;10(1):1
 36. Kong K-F, Delroux K, Wang X, et al. Dysregulation of TLR3 impairs the innate immune response to West Nile virus in the elderly. *Journal of Virology* 2008;82(15):7613-23
 37. Shaw AC, Joshi S, Greenwood H, Panda A, et al. Aging of the innate immune system. *Current opinion in immunology* 2010;22(4):507-13
 38. Chilvers E, Cadwallader K, Reed B, et al. The function and fate of neutrophils at the inflamed site: prospects for therapeutic intervention. *Journal of the Royal College of Physicians of London* 1999;34(1):68-74
 39. Fortin CF, Larbi A, Dupuis G, et al. GM-CSF activates the Jak/STAT pathway to rescue polymorphonuclear neutrophils from spontaneous apoptosis in young but not elderly individuals. *Biogerontology* 2007;8(2):173-87
 40. Fulop T, Larbi A, Douzich N, et al. Signal transduction and functional changes in neutrophils with aging. *Aging cell* 2004;3(4):217-26
 41. Tortorella C, Simone O, Piazzolla G, et al. Age-related impairment of GM-CSF-induced signalling in neutrophils: role of SHP-1 and SOCS proteins. *Ageing research reviews* 2007;6(2):81-93
 42. Panda A, Arjona A, Sapey E, et al. Human innate immunosenescence: causes and consequences for immunity in old age. *Trends in immunology* 2009;30(7):325-33
 43. Wenisch C, Patruta S, Daxböck F, et al. Effect of age on human neutrophil function. *Journal of Leukocyte Biology* 2000;67(1):40-45
 44. Sapey E, Greenwood H, Walton G, et al. Phosphoinositide 3-kinase inhibition restores neutrophil accuracy in the elderly: toward targeted treatments for immunosenescence. *Blood* 2014;123(2):239-48
 45. Lanier LL. NK cell recognition. *Annual Review of Immunology* 2005;23:225-74
 46. Mariani E, Pulsatelli L, Meneghetti A, et al. Different IL-8 production by T and NK lymphocytes in elderly subjects. *Mechanisms of Ageing and Development* 2001;122(13):1383-95
 47. Ogata K, Yokose N, Tamura H, et al. Natural killer cells in the late decades of human life. *Clinical Immunology and Immunopathology* 1997;84(3):269-75
 48. Gayoso I, Sanchez-Correa B, Campos C, et al. Immunosenescence of human natural killer cells. *Journal of innate immunity* 2011;3(4):337-43
 49. Mariani E, Meneghetti A, Neri S, et al. Chemokine production by natural killer cells from nonagenarians. *European Journal of Immunology* 2002;32(6):1524-29
 50. Vitale M, Zamai L, Neri L, et al. The impairment of natural killer function in the healthy aged is due to a postbinding deficient mechanism. *Cellular Immunology* 1992;145(1):1-10
 51. Fulop T, Franceschi C, Hirokawa K, et al. *Handbook on Immunosenescence*: Springer, 2009.

52. Wehner R, Dietze K, Bachmann M, et al. The bidirectional crosstalk between human dendritic cells and natural killer cells. *Journal of innate immunity* 2011;3(3):258-63
53. Jennette JC, Falk RJ, Bacon P, et al. 2012 revised international chapel hill consensus conference nomenclature of vasculitides. *Arthritis and Rheumatism* 2013;65(1):1-11
54. Kallenberg CG. Pathogenesis of ANCA-associated vasculitides. *Annals of the Rheumatic Diseases* 2011;70:i59-i63
55. Salama AD, Little MA. Animal models of ANCA associated vasculitis. *Current Opinion in Rheumatology* 2012;24(1):1-7
56. Kallenberg CG, Stegeman CA, Abdulahad WH, et al. Pathogenesis of ANCA-associated vasculitis: new possibilities for intervention. *American journal of kidney diseases* 2013;62(6):1176-87
57. Xiao H, Heeringa P, Liu Z, et al. The role of neutrophils in the induction of glomerulonephritis by anti-myeloperoxidase antibodies. *The American journal of pathology* 2005;167(1):39-45
58. Yang J, Tuttle R, Hogan S, et al. Target antigens for anti-neutrophil cytoplasmic autoantibodies (ANCA) are on the surface of primed and apoptotic but not unstimulated neutrophils. *Clinical & Experimental Immunology* 2000;121(1):165-72
59. van Timmeren MM, Heeringa P. Pathogenesis of ANCA-associated vasculitis: recent insights from animal models. *Current Opinion in Rheumatology* 2012;24(1):8-14
60. van Timmeren MM, van der Veen BS, Stegeman CA, et al. IgG glycan hydrolysis attenuates ANCA-mediated glomerulonephritis. *Journal of the American Society of Nephrology* 2010;21(7):1103-14
61. Calderwood JW, Williams JM, Morgan MD, et al. ANCA induces β 2 integrin and CXC chemokine-dependent neutrophil-endothelial cell interactions that mimic those of highly cytokine-activated endothelium. *Journal of Leukocyte Biology* 2005;77(1):33-43
62. Yang JJ, Kettritz R, Falk RJ, et al. Apoptosis of endothelial cells induced by the neutrophil serine proteases proteinase 3 and elastase. *The American journal of pathology* 1996;149(5):1617
63. O'Brien EC, Abdulahad WH, Rutgers A, et al. Intermediate monocytes in ANCA vasculitis: increased surface expression of ANCA autoantigens and IL-1 β secretion in response to anti-MPO antibodies. *Scientific reports* 2015;5
64. Kobold ACM, Kallenberg CG, Tervaert JWC. Monocyte activation in patients with Wegener's granulomatosis. *Annals of the Rheumatic Diseases* 1999;58(4):237-45
65. Salvarani C, Cantini F, Hunder GG. Polymyalgia rheumatica and giant-cell arteritis. *The Lancet* 2008;372(9634):234-45
66. Dasgupta B, Hutchings A, Matteson EL. Polymyalgia rheumatica: the mess we are now in and what we need to do about it. *Arthritis Care and Research* 2006;55(4):518-20
67. van der Geest KS, Abdulahad WH, Rutgers A, et al. Serum markers associated with disease activity in giant cell arteritis and polymyalgia rheumatica. *Rheumatology* 2015;keu526
68. Grolleau-Julius A, Harning EK, Abernathy LM, et al. Impaired dendritic cell function in aging leads to defective antitumor immunity. *Cancer Research* 2008;68(15):6341-49
69. Krupa WM, Dewan M, Jeon M-S, et al. Trapping of misdirected dendritic cells in the granulomatous lesions of giant cell arteritis. *The American journal of pathology* 2002;161(5):1815-23
70. Álvarez-Rodríguez L, López-Hoyos M, Muñoz-Cacho P, et al. Aging is associated with circulating cytokine dysregulation. *Cellular Immunology* 2012;273(2):124-32

71. Deng J, Younge BR, Olshen RA, et al. Th17 and Th1 T-cell responses in giant cell arteritis. *Circulation* 2010;121(7):906-15
72. Espígol-Frigolé G, Corbera-Bellalta M, Planas-Rigol E, et al. Increased IL-17A expression in temporal artery lesions is a predictor of sustained response to glucocorticoid treatment in patients with giant-cell arteritis. *Annals of the Rheumatic Diseases* 2012;72(9):1481-87
73. Rodríguez LÁ, López-Hoyos M, Mata C, et al. Expression and function of toll-like receptors in peripheral blood mononuclear cells of patients with polymyalgia rheumatica and giant cell arteritis. *Annals of the Rheumatic Diseases* 2011;70(9):1677-83
74. Kyle V, Hazleman B. Treatment of polymyalgia rheumatica and giant cell arteritis. I. Steroid regimens in the first two months. *Annals of the Rheumatic Diseases* 1989;48(8):658-61
75. Kermani TA, Warrington KJ. Polymyalgia rheumatica. *The Lancet* 2013;381(9860):63-72
76. Dasgupta B, Borg FA, Hassan N, et al. BSR and BHRP guidelines for the management of giant cell arteritis. *Rheumatology* 2010;keq039a
77. Salvarani C, Cantini F, Niccoli L, et al. Acute-phase reactants and the risk of relapse/recurrence in polymyalgia rheumatica: A prospective followup study. *Arthritis Care and Research* 2005;53(1):33-38
78. Lee JH, Choi ST, Kim JS, et al. Clinical characteristics and prognostic factors for relapse in patients with polymyalgia rheumatica (PMR). *Rheumatology International* 2013;33(6):1475-80
79. Mackie SL, Hensor EM, Haugeberg G, et al. Can the prognosis of polymyalgia rheumatica be predicted at disease onset? Results from a 5-year prospective study. *Rheumatology* 2010;49(4):716-22
80. Takeuchi O, Akira S. Pattern recognition receptors and inflammation. *Cell* 2010;140(6):805-20



