

University of Groningen

Optimisation of dry powder inhalation

Boer, Anne Haaije de

IMPORTANT NOTE: You are advised to consult the publisher's version (publisher's PDF) if you wish to cite from it. Please check the document version below.

Document Version

Publisher's PDF, also known as Version of record

Publication date:

2005

[Link to publication in University of Groningen/UMCG research database](#)

Citation for published version (APA):

Boer, A. H. D. (2005). *Optimisation of dry powder inhalation: The application of air classifier and laser diffraction technology for the generation and characterisation of aerosols from adhesive mixtures*. [Thesis fully internal (DIV), University of Groningen]. [S.n.].

Copyright

Other than for strictly personal use, it is not permitted to download or to forward/distribute the text or part of it without the consent of the author(s) and/or copyright holder(s), unless the work is under an open content license (like Creative Commons).

The publication may also be distributed here under the terms of Article 25fa of the Dutch Copyright Act, indicated by the "Taverne" license. More information can be found on the University of Groningen website: <https://www.rug.nl/library/open-access/self-archiving-pure/taverne-amendment>.

Take-down policy

If you believe that this document breaches copyright please contact us providing details, and we will remove access to the work immediately and investigate your claim.

Downloaded from the University of Groningen/UMCG research database (Pure): <http://www.rug.nl/research/portal>. For technical reasons the number of authors shown on this cover page is limited to 10 maximum.

Chapter 10

Air classifier technology (ACT) in dry powder inhalation Part 4: Performance of air classifier technology in the Novolizer[®] multi-dose dry powder inhaler

A.H. de Boer¹, P. Hagedoorn¹, D. Gjaltema¹, J. Goede², H.W. Frijlink¹

¹Department of Pharmaceutical Technology and Biopharmacy,
Groningen University Institute for Drug Exploration (GUIDE),
Ant. Deusinglaan 1, 9713 AV Groningen, The Netherlands.

²Sofotec GmbH&CoKG, Benzstrasse 1, D-61352 Bad Homburg, Germany.

Abstract

In this chapter, the in vitro fine particle deposition from a multi dose dry powder inhaler (Novolizer[®]) with air classifier technology has been investigated. It is shown that different target values for the fine particle fraction (fpf < 5 µm) of the same drug can be achieved in a well controlled way. This is particularly relevant to the application of generic formulations in the inhaler. The well controlled and predictable fpf is achieved through dispersion of different types of formulations in exactly the same classifier concept. On the other hand, it is shown that classifier technology is rather insensitive to the carrier surface and bulk properties. For ten randomly selected lactose carriers for inhalation from four different suppliers, the budesonide fpf (at 4 kPa) from the Novolizer[®] varied between 30 and 46% (of the measured dose; RSD = 14.2), whereas the extremes in fpf from the Diskus[®] dpi were 7 and 44% (RSD = 56.2%) for the same formulations. The fpf from a classifier based inhaler appears to be nearly independent of the amount of lactose (carrier) fines (< 15 µm) in the mixture. Classifier based inhalers perform best with coarse carriers that have relatively wide size distributions (e.g. 50-350 µm) and surface discontinuities inside which drug particles can find shelter from press-on forces during mixing. Coarse carrier fractions have good flow properties, which increases the dose measuring accuracy and reproducibility. The fpf from the Novolizer[®] increases with increasing pressure drop across the device. It is hypothesised that this yields a more reproducible therapy, because it compensates for a shift in deposition to larger airways when the flow rate is increased. Support for this hypothesis, based on lung deposition modelling studies, has been found in a scintigraphic study with the Novolizer[®]. Finally, it is shown that this inhaler produces a finer aerosol than competitor devices; within the fpf < 5 µm, subfractions of particles (e.g. < 1; 1-2; 2-3; 3-4 and 4-5 µm) are higher.

Keywords: Adhesive mixtures, Air classifier technology, Carrier lactose, Dry powder inhalation, Fine particle fraction, Novolizer[®]

1. Introduction

A dry powder inhaler consists of a number of functional parts, of which the powder formulation, the dose (measuring) system and the powder de-agglomeration principle are the most basic ones. Through the years it has become clear that none of these functional parts can be optimised without taking account of the performance of the others. The factors that determine the magnitude and consistency of the fine particle fraction (fpf) from powder inhalers are complex and interact with each other (Frijlink and de Boer, 2004). These interactions include for instance the relationship between carrier size and the carrier surface properties, or the effect of carrier size (distribution) on the dose accuracy and the adhesive forces in the mixture. Many of the requirements for carrier properties are contradictory or dissimilar for different devices. Fine carrier fractions, or the addition of certain fractions of fine lactose particles to coarser carriers, have been shown to increase the fine particle fractions from most marketed inhalers (e.g. Steckel and Müller, 1997; Zeng et al., 1998 and 2001; Louey and Stewart, 2002). Also for complete powder discharge from capsule inhalers, somewhat finer carrier fractions may be preferred (Bell et al., 1971), as powders with a median diameter of more than 100 μm may not be entrained by the air stream effectively (Steckel et al., 2004). In contrast, volumetric dose measuring systems, making use of the force of gravity, as for instance in the Pulvinal[®] (Meakin et al., 1998) and Clickhaler[®] (Thibert et al., 2002), may require somewhat larger particles or narrower size fractions. But too large diameters have to be avoided as they exhibit high carrier surface rugosities. This reduces the drug particle detachment during inhalation (e.g. Kawashima et al., 1998), unless inertial separation forces are generated by the inhaler during inhalation. In that case, high rugosities may be beneficial, particularly at somewhat higher carrier payloads, because they may keep the adhesive forces in the mixture low (Dickhoff et al., 2003). As a result of these complications and conflicting demands it is very difficult to obtain the best possible performance of a dpi regarding both fpf and dose consistency. It would be helpful to the formulation scientists if the freedom of choice for the carrier properties could be increased, e.g. by making the fine particle dose less dependent on the carrier properties.

In a previous study, the design and development of the Novolizer[®] air classifier technology has been presented. The aim of this study was to investigate the performance of these classifiers in detail. It will be explained how the fpf from the same classifier concept can be controlled to match a wide range of target values by choice of the type of formulation or by controlling the adhesive forces in the powder mixture, without using specially engineered particles or adding force controlling agents. Because drug redispersion in a classifier is less dependent on carrier surface properties than that in turbulent shear inhalers, carrier bulk properties can be selected rather freely. This enables the utilization of inertial and frictional press-on forces during the mixing process to actually control the magnitude of the adhesive forces (and by that, the fpf), which is desired for the development of generic formulations in the inhaler. It will be shown that a certain robustness with respect to carrier surface properties makes the fpf from an air classifier rather independent of the type of marketed lactose carrier used for mixture preparation, in contrast to turbulent shear inhalers. This increases the freedom of choice for the carrier in respect of flow properties and dose consistency. Finally, an aim of this study is to discuss the preferable output from a dpi. It is hypothesised, supported by lung deposition modelling data and the results from a scintigraphic study, that an increasing fpf with increasing flow rate yields a more constant therapy than a constant fpf at all flow rates.

2. Materials and methods

2.1. Materials

Alpha lactose monohydrate carrier fractions 90-106 μm and 250-315 μm were obtained by 20 min vibratory sieving (Analysette 3, Fritsch, Germany) followed by 20 min air jet sieving (A200, Alpine, Germany), using Pharmatose 100M and 80M as starting material respectively (DMV International, The Netherlands). Micronised lactose 1-8 μm ($X_{50} = 3.4 \mu\text{m}$) for the preparation of soft spherical agglomerates was also supplied by DMV International. Micronised salbutamol with an X_{50} of 1.4 μm ($X_{10} = 0.7$; $X_{90} = 3.4 \mu\text{m}$) was donated by RIVM (The Netherlands). Micronised budesonide ($X_{10} = 0.7$; $X_{50} = 1.3$; $X_{90} = 3.0 \mu\text{m}$) was supplied by Sofotec (Germany). Mixtures of 2% budesonide with ten different marketed carrier lactose products (Figs. 3 and 4) were prepared in a tumbling mixer (Turbula 2TC, WA Bachofen, Switzerland) at 90 rpm (10 min) in a 160 ml stainless steel mixing container. Mixtures of 10% budesonide or 10% salbutamol with three different carrier types (DMV Pharmatose 90M, Meggle Inhalac 70 and Meggle Capsulac 60), used for the experiments in Fig. 2, were prepared by Sofotec (Germany). Sofotec also prepared the mixtures of budesonide (2%), salbutamol sulfate (1%) and formoterol fumarate (0.1%) with Capsulac 60 used for Figs. 5 and 6. Marketed Novopulmon[®] 200 Novolizers[®] (with budesonide) were supplied by Viatris (Germany), and Pulmicort[®] 200 Turbuhaler[®] (AstraZeneca, UK), Fluticason[®] 250 Diskus[®] (GSK, UK) and Cyclohaler[®] with budesonide 200 Cyclocaps[®] (PCH Pharmachemie, The Netherlands) were obtained from a local pharmacy.

2.2. Methods

The size distributions of drugs (with a 100 mm lens) and lactose carrier products and special carrier size fractions (with 200 and 500 mm lenses) were measured with laser diffraction technique (HELOS BF MAGIC, Sympatec, Germany) using standard Windox software. A RODOS dry powder disperser was used to disperse the powders into the laser beam at 5 bar, except for DMV Pharmatose GR001 and Meggle Capsulac 60 which were dispersed at 3 bar. All calculations were made with the Fraunhofer theory.

Soft spherical agglomerates of salbutamol (0.9; 1.8; 3.6 and 7.5% w/w) with micronised lactose 1-8 μm were prepared by densifying and agglomerating the micronised drug in a stainless steel mixing container ($160 \times 10^{-4} \text{ m}^2$), using a tumbling mixer (Turbula T2C, WA Bachofen AG, Switzerland) at 90 rpm for 10 min. A small amount of stainless steel beads with a well defined size distribution was added as pelletising aid. Next, beads and salbutamol pellets were separated over a 315 micron sieve (by mild hand sieving) and the drug agglomerates were spheronised on a 200 μm vibratory sieve (Fritsch Analysette 3, Fritsch GmbH, Germany) for 20 min. Finally, pellets larger than 800 μm were removed (again by mild hand sieving), and the pellet fraction 315-800 μm was used for experiments.

Adhesive mixtures of micronised salbutamol sulfate (0.45; 0.9; 1.8 and 3.6% w/w) with lactose carrier size fractions 90-106 μm and 250-315 μm were prepared in the same stainless steel mixing container, using the same tumbling mixer (10 min at 90 rpm) as applied for the preparation of the soft spherical agglomerates.

Salbutamol content in the mixtures and soft spherical agglomerates was determined on 20 samples of approximately 25 mg each. The samples were dissolved in demineralised water and the solutions were analysed with a Philips spectrophotometer (PU 8720 UV/VIS, The Netherlands) at a wavelength of 276.5 nm.

Two different cascade impactors were used in this study. For the experiments in the Figs. 10.1 and 10.6, a four stage glass constructed impactor was applied. The experiments for Figs. 10.2-4, 7 and 10.9 were conducted with an Erweka multi stage liquid impinger. For all figures, the fine particle fractions $< 5 \mu\text{m}$, and the subfractions therein, were calculated from

the stage 2, 3 and 4 (plus filter) depositions. Only for the Figs. 3 and 4 (data derived from DMV International) is f_{pf} defined as the sum of the stage 3 + 4 + filter depositions (f_{pf} < 5.9 μm for both devices). Analyses were performed at a preset flow rate (Figs. 1, 2 and 6), or at a preset pressure drop across the inhaler (Figs. 3, 4, 7 and 9). All data presented are the mean of two series of ten doses each. Solvents used on the impactor stages were ethanol (analytical grade) for budesonide and formoterol, and demineralised water for salbutamol sulfate. Drug solutions were separated from non-dissolved lactose carrier particles in a centrifuge (Rotana 3500, Hettich, Germany) during 5 min at 3000 rpm. Budesonide and salbutamol concentrations were measured with a spectrophotometer (Philips PU 8720 UV-VIS, The Netherlands) at 242.8 nm and 276.5 nm respectively. Formoterol concentrations (Fig. 10.6) were measured with a HPLC (Waters 510, USA), using a Waters 484 detector at a wavelength of 286 nm.

The procedures for residence time measurement (Figs. 10.5 and 10.6) have been described in detail before (de Boer et al., 2005b).

3. Results and discussion

3.1. Controlling f_{pf} with air classifier technology

One of the objectives for design and development of air classifier technology was to obtain a versatile powder de-agglomeration principle that enables both adjustment of the fine particle output to that of a proprietary dpi in case of generic formulations and maximisation of the f_{pf} in case of formulations for new chemical entities. A great challenge has been found in achieving these goals with the same classifier concept (de Boer et al., 2005b). Success depends on an understanding of the mechanisms of particle separation and powder circulation in an air classifier, and also on knowledge of the particle interaction forces in the different inhalation powders. When exactly the same classifier design is used, different target values for f_{pf} can only be achieved by controlling the particle interaction forces in the powder and the residence time in the classifier.

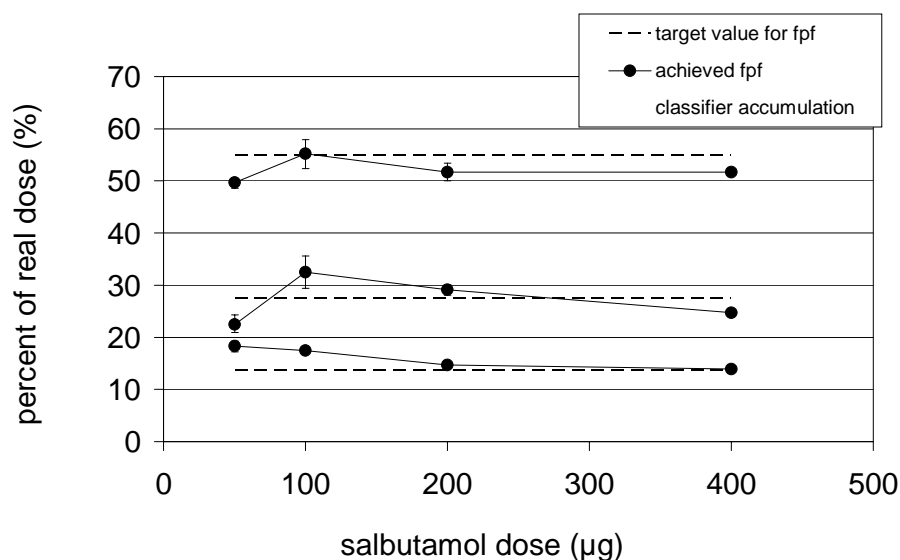


Figure 10.1. Figure showing three different target values for f_{pf} (< 5 μm) at 60 l_N/min (13.75; 27.5 and 55% of the real dose respectively) and f_{pf}-values actually achieved with different salbutamol formulations using the marketed Novolizer[®] (closed symbols). All data points are the mean of two series of 10 inhalations; spread bars indicate the maximal and minimal values.

Fig. 10.1 shows a typical example for salbutamol formulations. The objective was to develop three different formulations which delivered 13.75; 27.5 and 55% fine particle fraction (as percent of the real dose) at 60 l_N/min for different dose weights, ranging from 50 to 400 µg of salbutamol. Fig. 10.1 shows that even when the same multi-functional classifier design (from the Novolizer[®]) is used, the target values can adequately be achieved.

For the highest fpf-value in Fig. 10.1, soft spherical agglomerates of a mixture of micronised salbutamol and lactose (fraction 1-8 µm) were used. The agglomerates were densified to control the agglomerate strength and to match the control value for fpf. When the powder was densified to a lesser extent, fine particle fractions up to 80% were possible with the same classifier (at the same flow rate), not only for salbutamol sulfate but also for a more hygroscopic product like disodium cromoglycate. To achieve the other target values for the fpf, adhesive mixtures were prepared with different carrier size fractions (90-106 µm for the intermediate fpf-value and 250-315 µm for the lowest fpf-value), having different bulk properties and also different degrees of surface rugosity. In this way, the size and effectiveness of the press-on forces during the mixing process, and therefore, the interparticulate forces in the mixture could be controlled (de Boer et al., 2005a; Dickhoff et al., 2003, 2004). For all types of formulations and at all drug concentrations, the drug accumulations in the classifier were less than 5%.

3.2. Classifier robustness with respect to carrier type

In the previous paragraph, it has been shown that different values for the fpf of the same drug from the same classifier (at the same flow rate) can be obtained by using different types of powder formulations. In this paragraph, it will be proven that the performance of the Novolizer[®] in respect of powder dispersion can be rather insensitive to the type of carrier lactose used in adhesive mixtures. This seems in disagreement with what can be found in literature about the effect of carrier properties on the fine particle dose. For instance, it has been described that the addition of fine particles to drug carriers increases the fine particle dose from inhalers (e.g. Arnold et al., 1995). For the explanation, many different proposals have been made (e.g. Zeng et al., 1998; Podczeck, 1999; Louey and Stewart, 2002). But it has also been recognised that there is a limit to the amount of fines in carrier fractions because deteriorating flow properties affect the dose reproducibility in a negative way (Zeng et al., 2001). Therefore, optimisation of inhalation powders is finding a balance between consistency of delivered dose and the fine particle dose.

Fig. 10.2 shows that when three different brands of coarse carrier lactose are used, the fpf from the Novolizer[®] for salbutamol and budesonide mixtures varies less than 2.5% of the mean value (39.2% for budesonide and 49.5% for salbutamol). Even when completely different lactose carrier types are used, the fpf-values obtained with the air classifier based inhaler vary only between + 9% and - 7% of the mean value (37% of the real dose in Fig. 10.3). In contrast, the fpf from the Diskus[®] for the same formulations (at the same flow rate) varies between 7 and 44% (mean is only 20% in Fig. 10.3). The lactose types used for the experiments in Fig. 10.3 vary particularly in the amount of fines (< 15 µm), the median particle diameter and the span of the size distribution (Table 10.1). The carrier types used for Fig. 10.2 contain practically no fines (< 15 µm) and have about the same median diameter and span of the size distribution. They differ particularly in the surface rugosity. From scanning electron microscopic investigation it is known that Pharmatose 90M and Inhalac 70 are coarse crystalline materials with many surface discontinuities, whereas Capsulac 60 (though presented by the manufacturer as a crystalline brand of lactose) has a granular appearance with many deep surface depressions. Such depressions provide shelter to adhering drug particles from press-on forces during mixing, which helps keeping the adhesive forces in the mixture low (Dickhoff et al., 2003).

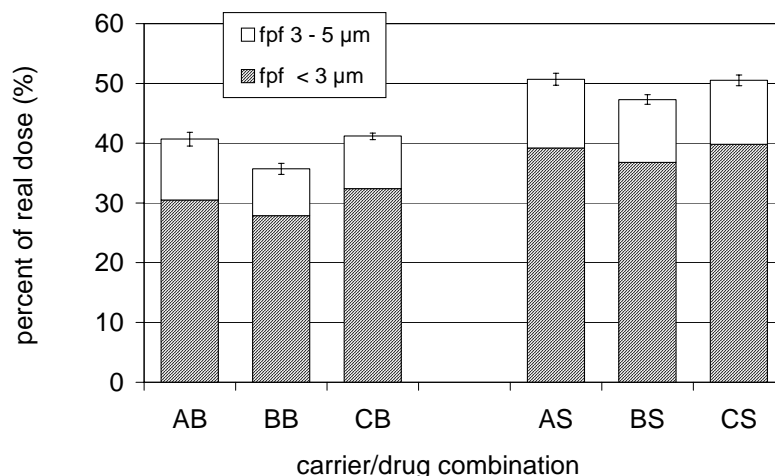


Figure 10.2. Fine particle fractions < 3 and $< 5 \mu\text{m}$ from the marketed Novolizer[®] for three different coarse carrier types with 10% (w/w) budesonide or salbutamol, at $65 \text{ l}_\text{N}/\text{min}$ (3.33 kPa). Mean of two series of 10 inhalations each; spread bars indicate the difference between both series. In the letter combinations on the ordinate, the first letter A is for Pharmatose 90M; B is for Inhalac 70 and C is for Capsulac 60. The second letter refers to the drug in the mixtures: budesonide (B) or salbutamol sulfate (S).

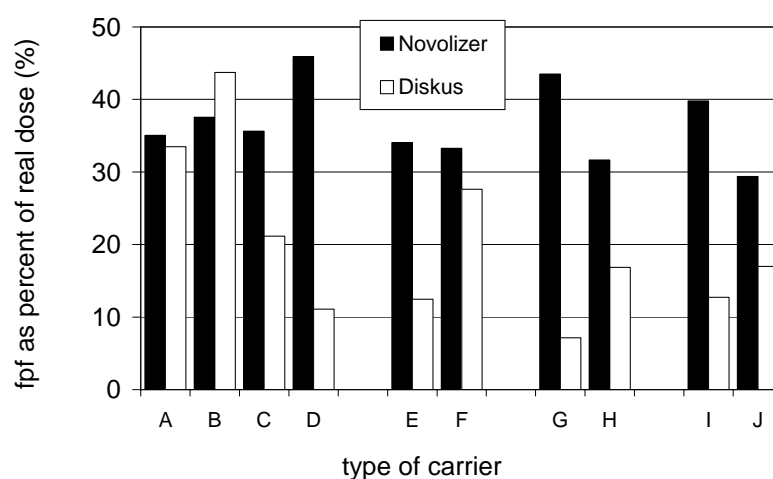


Figure 10.3. Fine particle fractions ($< 5.9 \mu\text{m}$, being the stage 3+4+filter depositions in the MSLI) at 4 kPa from the marketed Novolizer[®] and Diskus[®] dry powder inhalers for 2% budesonide mixtures with different brands of inhalation lactose: Respitose SV007 (A), Respitose ML001 (B), Respitose ML001A (C), Respitose GR001 (D) all from DMV International; Lactohale 100 (E), Lactohale 200 (F) from Borculo; Inhalac 70 (G), Inhalac 230 (H) from Meggle; MM250 (I) and MM50 (J) from Epikure. Mean of two series of 10 inhalations each.

The difference in behaviour between the Novolizer[®] and Diskus[®] inhaler can be explained with the difference in de-agglomeration principles in relation with the carrier properties. In the Novolizer[®] air classifier, inertial separation forces are generated during inhalation, as described previously (de Boer et al., 2005b). In contrast, the Diskus[®] utilises turbulent shear for powder dispersion. Although differences in fpf for different formulations from the same inhaler can not be explained satisfactorily with single parameters, Fig. 10.4

presents some clear trends between fpf and characteristic carrier properties for the formulations used in Fig. 10.2.

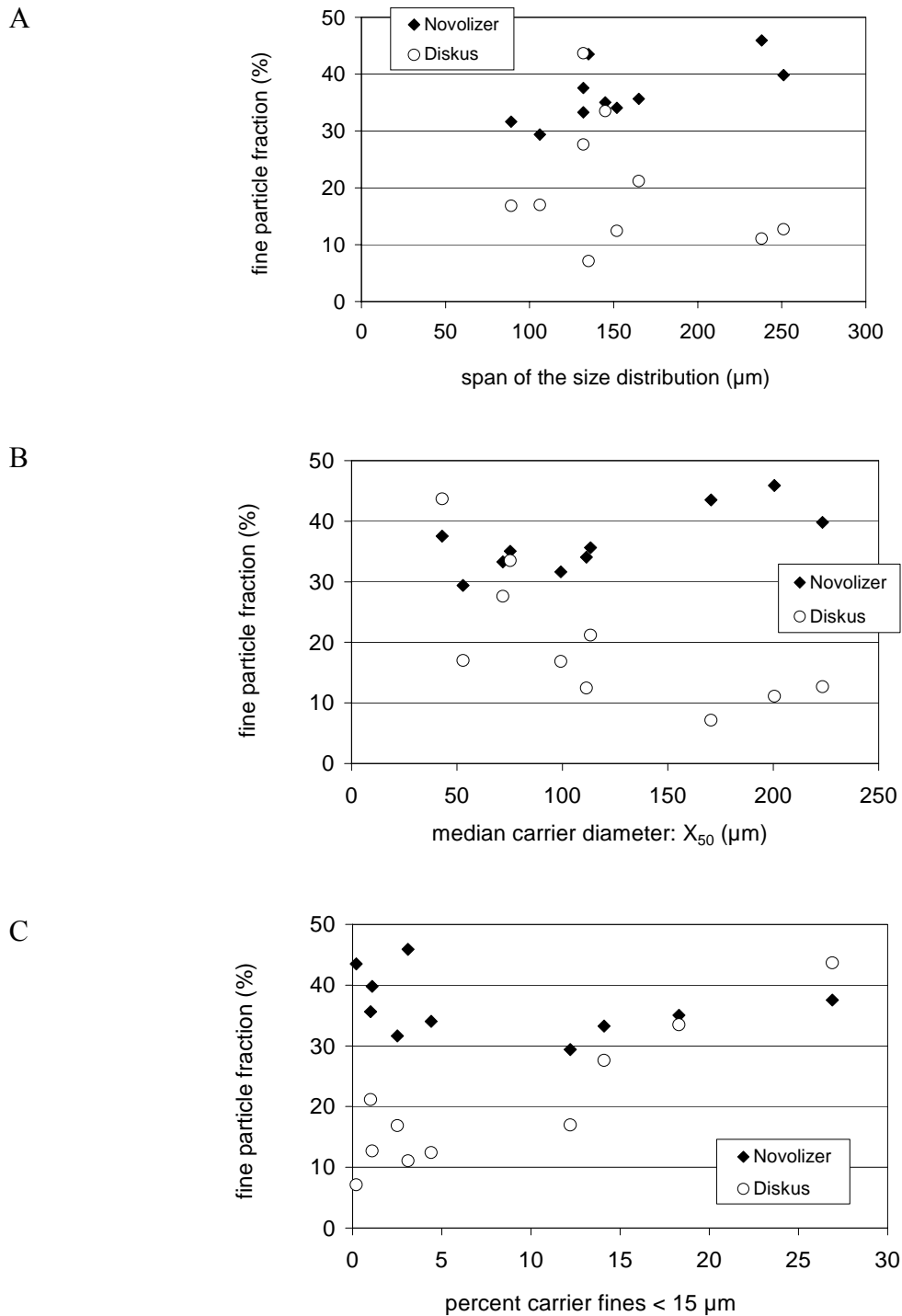


Figure 10.4. Fine particle fractions < $5.9 \mu\text{m}$ (stage 3+4+filter depositions in the MSLI at 4 kPa) for 2% budesonide formulations from the Novolizer[®] and Diskus[®] as function of (A) the span of the size distribution of the carriers used in the formulations, (B) the median diameter (from laser diffraction analysis) of the carriers, and (C) the volume percent of carrier particles < $15 \mu\text{m}$. The carriers are the same as in Fig. 10.3.

Table 10.1. X_{10} , X_{50} and X_{90} -values from cumulative volume distribution curves as function of the diameter for the carriers in the formulations used to prepare the Figs. 2-4. Data obtained from laser diffraction analysis; RODOS dispersion at 5 bar, except for the coalescent and granular products (Capsulac 60 and Respitose GR001) that were measured at 3 bar. All values are the mean of three analyses

Carrier type	X_{10} (μm)	X_{50} (μm)	X_{90} (μm)	Fraction of particles < 15 μm
Pharmatose 90 M	59.5	162.3	263.9	0.4
Inhalac 70	100.1	170.5	235.4	0.2
Capsulac 60	74.3	163.6	285.8	0.2
Respitose SV007	4.9	75.3	149.9	18.3
Respitose ML001	3.3	43.0	135.5	26.9
Respitose ML001A	55.2	113.3	220.5	1.0
Respitose GR001*	81.6	200.5	319.2	3.1
Lactohale 100	40.1	111.4	191.8	4.4
Lactohale 200	7.3	71.8	139.5	14.1
Inhalac 230	55.7	99.3	144.8	2.5
MM250	118.4	223.3	369.8	1.1
MM50	12.7	52.9	118.6	12.2

*product in development by DMV International, The Netherlands

Fig. 10.4A shows that the fpf from the Novolizer[®] tends to (slightly) increase with increasing width of the carrier size distribution. For the Diskus[®] there is no correlation between these parameters. Using coarse carriers has a great negative effect on the fpf from the Diskus[®] (Fig. 10.4B), whereas that from the Novolizer[®] rather tends to increase with increasing median carrier diameter. Finally, Fig. 10.4C shows that the fpf from the Novolizer[®] is largely independent of the amount of fines (< 15 μm) in the carrier product. In contrast, fpf from the Diskus[®] is strongly influenced by this parameter. The trends are consistent in indicating that a high fpf from the Novolizer[®] does not require a carrier type with a small median diameter or with a certain amount of fines (< 15 μm). On the contrary, fine carrier particles may worsen the powder circulation in a classifier during inhalation as a result of tribocharging. Large carrier particles perform much better in the Novolizer[®] in spite of the fact that they exhibit high press-on forces during mixing. However, the effectiveness of these forces in increasing the adhesive forces in the mixture may be low, depending on the total volume of the carrier surface discontinuities (inside which drug particles find shelter from the press-on forces), the carrier payload and the mixing conditions (Dickhoff et al., 2004). Whereas the magnitude of the press-on forces can be reduced by increasing the span of the size distribution (which worsens the flow properties of the powder mixture, e.g. in terms of Hausner ratio: Fig. 10.4A). For turbulent shear inhalers, like the Diskus[®], there is no advantage from a high carrier surface rugosity. Drug particles inside the carrier discontinuities also find shelter from the removal (drag and lift) forces during inhalation. Because the size of the discontinuities generally decreases with the median carrier diameter, the fpf from turbulent shear inhalers increases with decreasing median carrier diameter, or an increasing fraction of fines in the carrier product.

The fpf from the Novolizer[®] is nearly the same for all brands of lactose: on average 38.5%; 33.7%; 37.6% and 34.6% for DMV International, Borculo, Meggle and Epikure products respectively. The fpf for the Diskus[®] varies from 27.4% for DMV lactose (highest value) to only 12.0% for Meggle lactose (lowest value). The large degree of independence of the carrier lactose type in respect of fpf, provides a great freedom of choice for the carrier regarding the flow properties (carrier size distribution) with which the dose measuring

reproducibility can be controlled. Examples of the dose weighing accuracy and reproducibility by the Novolizer[®] have been given by others (e.g. Reiners et al., 2000).

3.3. Optimising between f_{pf} and residence time

Previously, it has been described how the discharge rate of a powder dose (adhesive mixture type of drug formulation) from a particular classifier concept can be measured, and controlled with the diameter of the discharge channel (de Boer et al., 2005b). In the same study it was explained how the de-agglomeration efficiency of a classifier can be optimised by varying the classifier shape (and dimensions) or the angles of impaction. The optimal design may be different for different powder formulations (e.g. carrier size fractions), although the classifier in the currently marketed Novolizer[®] performs adequately with both soft spherical agglomerates and adhesive mixtures with a variety of carrier products for inhalation (Figs. 10.1-4).

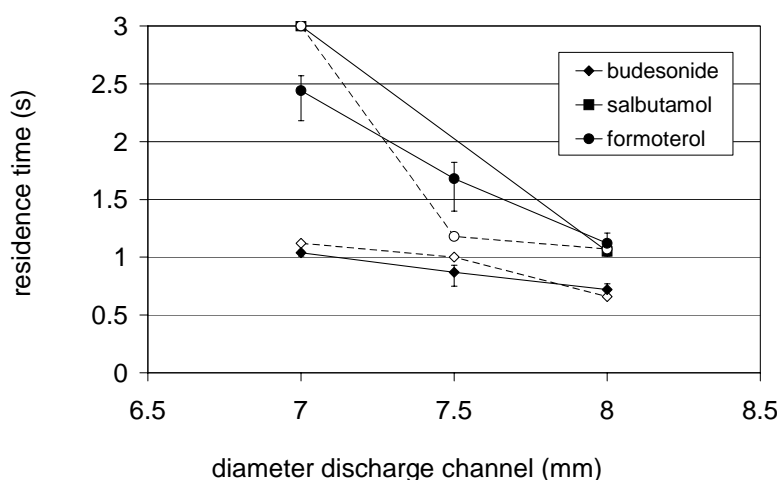


Figure 10.5. Time necessary to completely empty the classifier (referred to as residence time) as function of the diameter of the classifier discharge channel for three different drug formulations in the same classifier concept. Closed symbols (continuous lines): 60 l_N/min (corresponding with 4 kPa); open symbols (dotted lines): 30 l_N/min (corresponding with 1 kPa). Each data point is the mean of three measurements; spread bars indicate the maximal and minimal values.

Fig. 10.5 shows the residence times at 30 and 60 l_N/min for three different drug formulations (as function of the diameter of the discharge channel) in a classifier that has been optimised for coarse carrier products (X_{50} between 150 and 200 μm). The classifier resistance as function of the discharge diameter is given in Table 10.2. This table also presents the pressure drops across the inhaler corresponding with 30 and 60 l_N/min. According to pharmacopoeial procedures, the entire dose has to be delivered in a time period within which 4 l of air is withdrawn from the inhaler's mouthpiece (USP 27, 2004). However, patients suffering from pulmonary disease may have a reduced pulmonary function and be unable to inhale 4 l of air. Also a fraction of the inhaled volume is necessary for drug transport into the peripheral lung. Therefore, delivery of the entire dose in the first 2 l of inhaled air is safer. For a flow rate of 60 l_N/min, this equals an inhalation time of 2 s. For the carriers used in the drug formulations that are presented in Fig. 5, a discharge channel of 7.5 or 8 mm would therefore be satisfactory. Although the relationships at 30 l_N/min (open symbols) are influenced by a small degree of tribocharging, the results confirm previously reported data (de Boer et al., 2005b) which show that the residence time for coarse carriers is practically independent of the

flow rate through the classifier. The aim to control the residence time within a time period of 1 to 2 s (at 60 l_N/min and higher) is also in good agreement with the time period in which the (sub-) maximal fpf can be obtained (de Boer et al., 2005b). Newman et al. (2000) reported inhaled volumes through the Novolizer[®] of 3.13 l (at an average flow rate of 99 l/min), 2.96 l (at 65 l/min) and 2.77 l (at 54 l/min) without giving the instruction to inhale as long as possible.

Table 10.2. Some characteristics of the classifier with different discharge channels of which the powder residence time and in vitro deposition results are shown in Figs. 5 and 6 respectively. All discharge channels have the same construction and differ only in the diameter

Diameter discharge channel (mm)	7	7.5	8
Total inhaler resistance (kPa ^{0.5} .min.l ⁻¹)	0.036	0.034	0.033
kPa at 30 l _N /min	1.17	0.98	0.96
kPa at 60 l _N /min	4.67	3.92	3.69
Classifier flow as fraction of total flow	0.60	0.61	0.64

3.4. Fine particle fraction as function of the inspiratory effort

For generic drug formulations, the aim is not to be as good as possible, but to be equivalent to the originator product on the market. Fig. 10.6 shows the fpf < 5 μm for budesonide and salbutamol formulations from the currently marketed Novolizer[®] in comparison with the fpf's from the a few competitor devices at four different pressure drops. The Cyclohaler[®] has been tested at a lower range of pressure drops (1 to 4 kPa), because this inhaler has a lower air flow resistance. The flow rate through the Cyclohaler[®] at 2 kPa (82 l_N/min) is about the same as that through the Novolizer at 4 kPa (80 l_N/min). In comparison, 4 kPa equals 89 l_N/min through the Flixotide[®] (fluticasone) Diskus[®] and 75 l_N/min through the Serevent[®] (salbutamol) Diskus[®]. Only the flow rate through the Turbuhaler[®] is substantially lower at this pressure drop: 52 l_N/min.

The relationships between the fine particle fraction and pressure drop for the Turbuhaler[®] and Novolizer[®] differ fundamentally from those obtained with the Diskus[®] and Cyclohaler[®]. Fpf from the first two inhalers increases with increasing kPa (to values exceeding 40 to 50% of the label claim), whereas that from Diskus[®] and Cyclohaler[®] is nearly the same, approximately 25% of the label claim at all pressure drops. The reason is a difference in de-agglomeration mechanism; the Novolizer[®] and Turbuhaler[®] make use of other types of separation forces than the Diskus[®] and Cyclohaler[®]. In the Novolizer[®] and Turbuhaler[®], inertial and frictional forces are responsible for fine particle detachment and break up of drug agglomerates respectively. The higher the kinetic energy of the inspiratory flow, the higher these forces become and the more effective drug redispersion will be. In the Diskus[®] and (to a lesser extent) in the Cyclohaler[®], drug redispersion depends on turbulent shear (drag and lift forces). For these types of inhaler, the magnitude of the separation forces is less relevant than their effectiveness in getting hold of the drug particles that adhere to the carrier surfaces. Drug particles in carrier surface discontinuities may not be affected by these forces. Therefore, carrier surface irregularities are much more important when turbulent shear inhalers are used than they are for dpi's that make use of inertial separation forces. The Cyclohaler[®] could be regarded as a hybrid in terms of de-agglomeration. Next to turbulent shear, there may be a contribution from inertial and frictional forces to drug particle dislodgment, as carrier particles collide with the inner capsule walls during capsule spinning. They may also collide with the inner wall of the capsule circulation chamber upon discharge from the capsule. This could also explain why at least the salbutamol formulation from the Cyclohaler[®] has a slightly increasing fpf with increasing inspiratory effort.

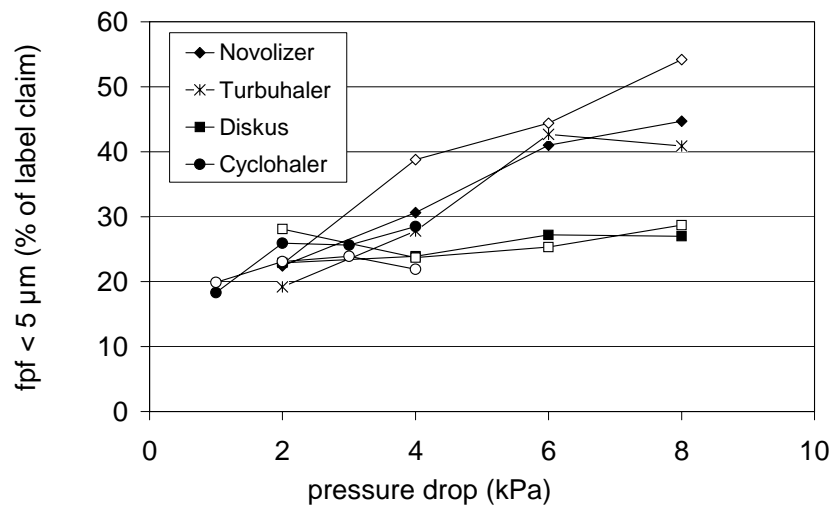


Figure 10.6. Fine particle fractions $< 5 \mu\text{m}$ as percent of label claim for four different marketed dry powder inhalers at four different pressure drops. Open symbols are for budesonide (Novolizer[®] and Cyclohaler[®]) and flixotide (Diskus[®]); closed symbols are for salbutamol (Novolizer[®] and Cyclohaler[®]) and salmeterol (Diskus[®]). The Turbuhaler[®] (asterisks) was also tested with budesonide.

It has been mentioned that a constant fine particle fraction at all flow rates yields a more constant therapy. Therefore, it is recommended that the aerodynamic particle size of the aerosolised drug is independent of the inspiratory effort (e.g. Zeng et al., 2002). This may be questioned on the basis of theoretical considerations, however. Lung deposition modelling studies all show the same trend of a shift in deposition towards higher airways for the same particles when the inspiratory flow rate is increased. This is due to a higher momentum of these particles at a higher air velocity, which increases the contribution of inertial impaction to lung deposition. An example for particles with an aerodynamic diameter of $5 \mu\text{m}$ is given by Gerrity (1990). Fig. 10.7 is based on his calculations and shows how the deposition fraction in the conducting airways (generations 0 - 11) increases with increasing flow rate at the cost of the deposition fractions in the respiratory (generations 17 - 23) and transitional (generations 12 - 16) airways. In Fig. 10.7, the partial deposition fractions have been expressed as percent of the total deposition fraction. Similar calculations can be made for particles of other sizes within the fine particle fraction. And although the shift in deposition will not exactly be the same, as the deposition efficiencies (total deposition fractions) vary with the particle size, the same general trend will be obtained. To compensate for this shift in deposition to higher airways when the flow rate through an inhaler is increased, a higher fine particle dose will have to be delivered in order to obtain the same amount of drug in the target area (assuming that this is in the respiratory and transitional airways). The increase in fpf with increasing inspiratory effort may have to be rather substantial, considering that a moderate increase in the flow rate (with 40 l/min) already halves the central and deep lung deposition of 5 micron particles (for the range of flow rates in Fig. 10.7). Good support for this hypothesis is obtained from a scintigraphic study of Newman et al. (2000), who measured a rather constant ratio (1.0 - 0.9) for the peripheral lung deposition to central lung deposition for budesonide inhaled from the Novolizer[®] at 54, 65 and 99 l/min respectively. If the fpf would have been the same at all flow rates, a decreasing ratio with increasing flow rate would have been more likely. Peripheral lung deposition itself increased only from 6.5 to 8.5% between lowest and highest flow rate. This is a relatively small increase considering the much greater

difference in delivered fine particle fraction ($< 5 \mu\text{m}$) between 54 l/min (approx. 23%) and 99 l/min (approx. 45%) for the same drug from this device (see Fig. 10.6). In the same study, Newman et al. showed that the oropharyngeal deposition (including mouth deposition) is rather constant from the Novolizer[®] at all flow rates too. This confirms an increase in the deposition of detached fine drug particles in the pharynx when the flow rate is increased, as the deposition in the mouth from drug still attached to carrier becomes less (because of improved de-agglomeration). Therefore, a fine particle output which compensates for the flow rate dependent lung deposition seems to yield a more constant therapy than a constant fine particle dose at all flow rates. However, a reduction of the inspiratory flow rate, e.g. by increasing the inhaler resistance, may be an even better solution for this problem, as increasing the total lung deposition could increase the side effects (Weda et al., 2004). This aspect of inhaler design certainly requires further investigation and more attention in future dpi developments.

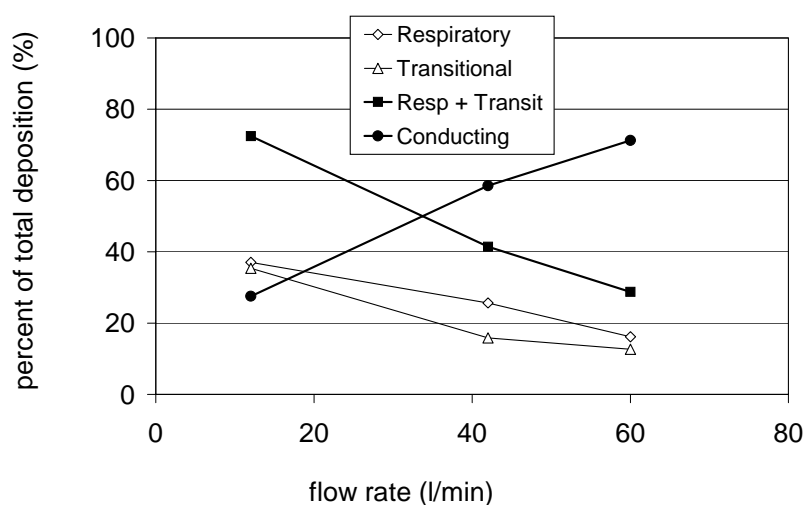


Figure 10.7. Example of the shift in deposition from the respiratory zone (airway generations 23-17) and transitional zone (generations 16-12) to the conducting zone (generations 0-11) for particles with an aerodynamic diameter of $5 \mu\text{m}$, when the inspiratory flow rate is increased. The figure is based on calculations of Gerrity (1990). 'Resp + Transit' is the sum of respiratory and transitional deposition fractions. All regional deposition fractions have been expressed as percent of total deposition fraction (on average 0.828 for all flow rates).

3.5. Size distribution within the fine particle fraction

In spite of delivering the same fine particle fraction ($< 5 \mu\text{m}$) at the same flow rate, the lung deposition of inhalers may be different when the size distribution within the fpf is not the same. This should not necessarily result in different efficacies (Weda et al., 2002), but it could cause considerable differences in side effects (Weda et al., 2004). Fig. 10.8 shows the subfractions of particles $< 1 \mu\text{m}$; $1 - 2 \mu\text{m}$; $2 - 3 \mu\text{m}$; $3 - 4 \mu\text{m}$ and $4 - 5 \mu\text{m}$ within the total fine particle fraction $< 5 \mu\text{m}$ for the cortico steroid formulations from the Novolizer[®], Turbuhaler[®], Diskus[®] and Cyclohaler[®] at 4 kPa. For a better comparison, all subfractions have been presented as percent of fpf $< 5 \mu\text{m}$. The differences are quite substantial; e.g. the subfraction of particles $< 2 \mu\text{m}$ varies from 28.8% (for Diskus[®]) to 58.7% (for Novolizer[®]). Also at the other flow rates the aerosol from the Novolizer[®] is finer. The difference between the inhalers is not necessarily a result of different de-agglomeration efficiencies. There may also be differences in the primary particle size distributions of the drugs. Sometimes,

somewhat broader size distributions are intentional, as larger drug particles are detached more easily from the carrier crystals than smaller ones. It could also be the result of a sustained action of the forces that separate the drug and carrier particles during inhalation.

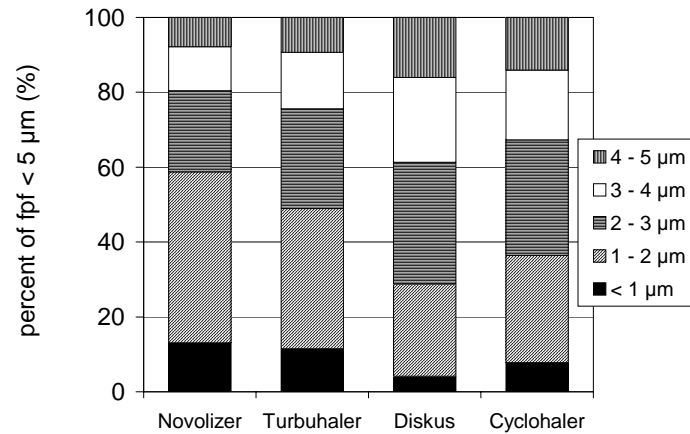


Figure 10.8. Distribution of fine particles within the fraction $< 5 \mu m$ at 4 kPa for the four different cortico steroid dry powder inhalers in Fig. 10.6.

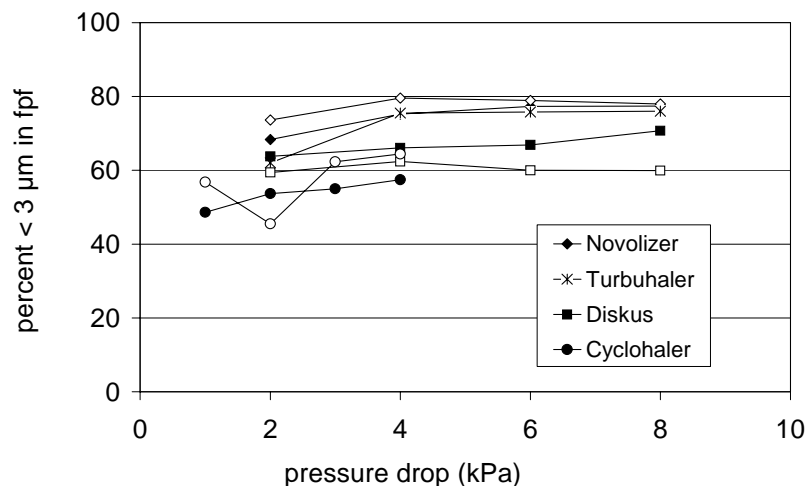


Figure 10.9. The fraction of fine particles $< 3 \mu m$ as percent of the fraction of fine particles $< 5 \mu m$ for the same inhalers and formulations as shown in Fig. 10.6.

Previously, it has been shown that the particle size of detached particles decreases with increasing circulation time in a classifier (de Boer et al., 2004b). The percent of particles smaller than $3 \mu m$ in the fine particle fraction ($fpf < 5 \mu m$) at different pressure drops across the inhaler is shown in Fig. 10.9. Only the Turbuhaler[®] approaches the high value of nearly 80% for the Novolizer[®], although Fig. 10.8 shows that within the fraction $< 3 \mu m$ there is still a considerable difference between both devices. Finer particles may travel deeper into the lung. Evidence for that is also obtained from the study of Newman et al. (2000). In spite of a slightly better in vitro deposition from the Turbuhaler[®] at 4 kPa for the radiolabelled drug in their study (fpf is 28,5% from the Turbuhaler[®] versus 33,3% from the Novolizer[®]), Newman et al. (2000) reported peripheral and intermediate lung depositions at the same flow rate (60

l/min) of 13.2% for the Turbuhaler[®] versus 16.7% for the Novolizer[®]. Also the slight difference in exhaled particles (0.2% for the Turbuhaler[®] and 0.6% for the Novolizer[®]) suggests that more fine particles have been generated by the Novolizer[®].

4. Conclusions

Target values for the fine particle fraction can be achieved with great precision when air classifier technology is used as de-agglomeration principle. The targets can be attained simply by using different types of powder formulations (soft spherical agglomerates and adhesive mixtures) in the same classifier and by making good use of the knowledge of relevant to drug-to-carrier interactions. Yet air classifier technology is relatively insensitive to variations in the carrier surface and bulk properties within the same type class of lactose compared with other de-agglomeration principles (as concluded from comparison with the Diskus[®] multi dose dry powder inhaler). Rather coarse carrier fractions can be used and the presence of a certain fraction of fine carrier particles (e.g. < 15 µm) in the mixture is not necessary to obtain a high f_{pf}. However, by using a wide carrier size distribution (e.g. ranging from 50 to 350 µm), inertial and frictional press-on forces during the mixing process can be kept low, whereas the effects of tribocharge in the classifier are suppressed. As a result, the circulation velocity in the classifier is high. This reduces the magnitude of the adhesive forces in the mixture and increases that of the separation forces during inhalation. Like the Turbuhaler[®], the Novolizer[®] produces an increasing f_{pf} with increasing pressure drop across the inhaler. This increase in f_{pf} is expected to compensate for the shift in deposition to higher airways at higher inspiratory flow rates. Lung deposition data obtained with the Novolizer[®] (Newman et al., 2000) seem to confirm this expectation. Finally, the Novolizer[®] produces a much higher fraction of extra fine particles (1-3 µm) within the f_{pf} < 5 micron than competitor devices. In vivo deposition data of Newman et al. (2002) suggest that this extra fine particle fraction contributes to a higher intermediate and peripheral lung deposition.

Acknowledgements

The authors are grateful to Mrs. Beekhuis for carefully screening the manuscript and the members of the research workshop of the Faculty of Medicine (University of Groningen) for constructing various test inhalers with great precision and dedication. They would also like to thank DMV International for lending relevant results from their own investigations to this study, and particularly Mrs. Gruben who collected these results.

References

- Arnold, K., Knecht, A., Roos, R., Sluke, G., Thieme, H., Wenzel, J., 1995. Powders for inhalation. US-patent 5,478,578.
- Bell, J.H., Hartley, P.S., Cox, J.S.G., 1971. Dry powder aerosols I: a new powder inhalation device. *J. Pharm. Sci.* 60, 1559-1564.
- de Boer, A.H., Winter, H.M.I., Lerk, C.F., 1996. Inhalation characteristics and their effects on in vitro drug delivery from dry powder inhalers part 1. Inhalation characteristics, work of breathing and volunteers' preference in dependence of the inhaler resistance. *Int. J. Pharm.* 130, 231-244.
- de Boer, A.H., Hagedoorn, P., Gjaltema, D., Lambregts, D., Irgartinger, M., Frijlink, H.W., 2004a. The rate of drug particle detachment from carrier crystals in an air classifier based inhaler. *Pharm. Res.* 21, 2158-2166.

- de Boer, A.H., Hagedoorn, P., Gjaltema, D., Lambregts, D., Irmgartinger, M., Frijlink, H.W., 2004b. The mode of drug particle detachment from carrier crystals in an air classifier based inhaler. *Pharm. Res.* 21, 2167-2174.
- de Boer, A.H., Dickhoff, B.H.J., Hagedoorn, P., Gjaltema, D., Goede, J., Lambregts, D., Frijlink, H.W., 2005a. A critical evaluation of the relevant parameters for drug redispersion from adhesive mixtures during inhalation. *Int. J. Pharm.* 294, 173-184.
- de Boer, A.H., Hagedoorn, P., Gjaltema, D., Goede, J., Frijlink, H.W., 2005b. Air classifier technology in dry powder inhalation part 3: design and development of an air classifier family for the Novolizer[®] multi-dose dry powder inhaler. Submitted to *Int. J. Pharm.*
- Dickhoff, B.H.J., de Boer, A.H., Lambregts, D., Frijlink, H.W., 2003. The effect of carrier surface and bulk properties on drug particle detachment from crystalline lactose carrier particles during inhalation, as function of carrier payload and mixing time. *Eur. J. Pharm. Biopharm.* 56, 291-302.
- Dickhoff, B.H.J., de Boer, A.H., Lambregts, D., Frijlink, H.W., 2004. The interaction between carrier rugosity and carrier payload and its effect on drug particle redispersion from adhesive mixtures during inhalation. *Eur. J. Pharm. Biopharm.* 59, 197-205.
- Frijlink, H.W., de Boer, A.H., 2004. Dry powder inhalers for pulmonary drug delivery. *Expert Opin. Drug Deliv.* 1, 67-86.
- Gerrity, T.R., 1990. Pathophysiological and disease constraints on aerosol delivery. In: Byron, P.R. (Ed.) *Respiratory drug delivery*. CRC Press, Boca Raton, USA, pp 1-38.
- Kawashima, Y., Serigano, T., Hino, T., Yamamoto, H., Takeuchi, H., 1998. Effect of surface morphology of carrier lactose on dry powder inhalation property of pranlukast hydrate. *Int. J. Pharm.* 172, 179-188.
- Louey, M.D., Stewart, P.J., 2002. Particle interactions involved in aerosol dispersion of ternary interactive mixtures. *Pharm. Res.* 19, 1524-1531.
- Meakin, B.J., Ganderton, D., Panza, I., Ventura, P., 1998. The effect of flow rate on drug delivery from the Pulvinal, a high-resistance dry powder inhaler. *J. Aerosol Med.* 11, 143-152.
- Newman, S.P., Pitcairn, G.R., Hirst, P.H., Bacon, R.E., O'Keefe, E., Reiners, M., Hermann, R., 2000. Scintigraphic comparison of budesonide deposition from two dry powder inhalers. *Eur. Respir. J.* 16, 178-183.
- Podczeczek, F., 1999. The influence of particle size distribution and surface roughness of carrier particles on the in vitro properties of dry powder inhalers. *Aerosol Sci. Technol.* 31, 310-321.
- Reiners, M., Stang, N., Wolf-Heuss, E., 2000. Stability and performance characteristics of a budesonide powder formulation for inhalation. In: Dalby, N.D., Byron, P.R., Farr, S.J., Peart, J. (Eds). *Respiratory Drug Delivery VII*. Serentec Press, Raleigh, pp 333-336.
- Thibert, R., Parry-Billings, M., Shott, M., 2002. Clickhaler[®] dry powder inhaler: focussed in vitro proof of principle evaluation of a new chemical entity for asthma. *Int. J. Pharm.* 239, 149-156.
- Steckel, H., Müller, B.W., 1997. In vitro evaluation of dry powder inhalers II: influence of carrier particle size and concentration on in vitro deposition. *Int. J. Pharm.* 154, 31-37.
- Steckel, H., Borowski, M., Eskandar, F., 2004. Selecting lactose for a capsule based dry powder inhaler. *Pharm. Technol. Europe* 4, 23-35.
- United States Pharmacopeia 27, 2004, pp 2253-2269.
- Weda, M., Zanen, P., de Boer, A.H., Gjaltema, D., Ajaoud, A., Barends, D.M., Frijlink, H.W., 2002. Equivalence testing of salbutamol dry powder inhalers: in vitro impaction results versus in vivo efficacy. *Int. J. Pharm.* 249, 247-255.
- Weda, M., Zanen, P., de Boer, A.H., Barends, D.M., Frijlink, H.W., 2004. An investigation into the predictive value of cascade impactor results for side effects of inhaled salbutamol. *Int. J. Pharm.* 287, 79-87.
- Zeng, X.M., Martin, G.P., Tee, S-K, Marriott, C., 1998. The role of fine particle lactose on the dispersion and deaggregation of salbutamol sulphate in an air stream in vitro. *Int. J. Pharm.* 176, 99-110.
- Zeng, X.M., Martin, G.P., Marriott, C., Pritchard, J., 2001. Lactose as carrier in dry powder formulations: the influence of surface characteristics on drug delivery. *J. Pharm. Sci.*, 90, 1424-1434.

Zeng, X.M., O'Leary, D., Phelan, M., Jones, S., Colledge, J., 2002. Delivery of salbutamol and of budesonide from a novel multi-dose inhaler AirmaxTM. *Resp. Medicine* 96, 404-411.

