

University of Groningen

On the cause of multiple sclerosis

Bijlard, Marjolein

IMPORTANT NOTE: You are advised to consult the publisher's version (publisher's PDF) if you wish to cite from it. Please check the document version below.

Document Version

Publisher's PDF, also known as Version of record

Publication date:
2016

[Link to publication in University of Groningen/UMCG research database](#)

Citation for published version (APA):

Bijlard, M. (2016). *On the cause of multiple sclerosis: Molecular mechanisms regulating myelin biogenesis*. [Thesis fully internal (DIV), University of Groningen]. Rijksuniversiteit Groningen.

Copyright

Other than for strictly personal use, it is not permitted to download or to forward/distribute the text or part of it without the consent of the author(s) and/or copyright holder(s), unless the work is under an open content license (like Creative Commons).

The publication may also be distributed here under the terms of Article 25fa of the Dutch Copyright Act, indicated by the "Taverne" license. More information can be found on the University of Groningen website: <https://www.rug.nl/library/open-access/self-archiving-pure/taverne-amendment>.

Take-down policy

If you believe that this document breaches copyright please contact us providing details, and we will remove access to the work immediately and investigate your claim.

Downloaded from the University of Groningen/UMCG research database (Pure): <http://www.rug.nl/research/portal>. For technical reasons the number of authors shown on this cover page is limited to 10 maximum.

MAL is a regulator of PLP recruitment to membrane microdomains in the biogenesis and maintenance of myelin-like membranes

Marjolein Bijlard, Jenny C. de Jonge, Bert Klunder, Anita Nomden, Dick Hoekstra and Wia Baron

Department of Cell Biology, University of Groningen, University Medical Center Groningen,
Groningen, the Netherlands

Manuscript submitted

ABSTRACT

In oligodendrocytes (OLGs), an indirect, transcytotic pathway is mediating transport of *de novo* synthesized PLP, a major myelin specific protein, from the apical-like plasma membrane to the specialized basolateral-like myelin membrane to prevent its premature compaction. MAL is a well-known regulator of polarized trafficking in epithelial cells, and given its presence in OLGs it was therefore of interest to investigate whether MAL played a similar role in PLP transport in OLGs, taking into account its timely expression in these cells. Our data revealed that premature expression of mCherry-MAL in oligodendrocyte progenitor cells interfered with terminal OLG differentiation, although myelin membrane formation *per se* was not impaired. In fact, also PLP transport to myelin membranes via the cell body plasma membrane was unaffected. However, the typical shift of PLP from TX-100-insoluble membrane domains to CHAPS-resistant, but TX-100-soluble membrane domains, seen in the absence of MAL expression, is substantially reduced upon expression of the MAL protein. Interestingly, not only *in vitro*, but also in developing brain a strongly diminished shift from TX-100-insoluble to TX-100-soluble domains was observed. Consistently, the MAL-expression mediated annihilation of the typical membrane microdomain shift of PLP is also reflected by a loss of the characteristic surface expression profile of conformation-sensitive anti-PLP antibodies. Hence, these findings suggest that MAL is not involved in vesicular PLP trafficking to either the plasma membrane and/or the myelin membrane as such, but rather may regulate PLP's segregation into distinct microdomains that allow for lateral diffusion of PLP, directly from the plasma membrane to the myelin membrane once the myelin sheath has been assembled.

INTRODUCTION

Oligodendrocytes (OLGs) belong to the glial cell population of the central nervous system (CNS) and are responsible for the production of myelin. Myelin constitutes a multilamellar membrane organization that ensheaths and insulates the axon, thereby facilitating saltatory conduction and providing axonal protection (as reviewed in Ref. 234). Neurological disorders such as multiple sclerosis (MS) are initiated by disruption and degradation of myelin, including failure of OLG differentiation and proper *de novo* biogenesis of myelin sheaths for regeneration. Clearly, a detailed understanding of extra- and intracellular molecular mechanisms that promote myelination, including the biosynthesis and transport of specific myelin membrane components to the myelin sheath, will be instrumental in efforts to develop an effective therapy for such a disease.

The myelin membrane is continuous with the plasma membrane of the OLG, but their composition and underlying mechanisms involved in delivery of their membrane constituents, differ significantly ^{9,10,26,28,235}. Hence, analogous to epithelial cells and neurons, these myelin-producing cells can be considered as polarized cells. Indeed, previously we have shown that the t-SNAREs syntaxins 3 and 4, which are asymmetrically distributed in (polarized) epithelial cells ^{177,201}, are similarly asymmetrically distributed in OLGs, syntaxin 3 being enriched at the plasma membrane of the cell body, whereas syntaxin 4 localizes towards the myelin membrane ^{9,116}. Moreover, a transcytotic transport mechanism appears to operate between cell body plasma membrane and myelin membrane in cultured OLGs ^{7,121}. In fact, the major myelin-specific multispinning proteolipid protein (PLP), comprising 17% of the total fraction of myelin ²⁰⁵ and mediating membrane compaction via clustering of extracellular leaflets ^{30,31}, reaches its final destination via this indirect, transcytotic pathway ⁷. Thus, prior to reaching the myelin membrane, PLP is first transported to the apical-like cell body plasma membrane from where the protein is internalized and stored in an endosomal compartment ^{7,8,136,139,229}. From this storage site, the protein is subsequently transported towards the basolateral-like myelin membrane, a process that occurs under neuronal control ²⁰. Interestingly, along this transcytotic transport pathway, initial transport of *de novo* synthesized PLP from Golgi to plasma membrane relies on its integration in membrane microdomains, characterized by PLP's resistance to solubilization by Triton X-100 (TX-100) detergent. TX-100 insolubility appears a transient phenomenon, since subsequent to arrival at the cell body plasma membrane the protein segregates in a sulfatide-dependent manner into TX-100-soluble, but CHAPS-insoluble domains ^{7,11}. Intriguingly, this shift between domains is accompanied by changes in the conformation of the second extracellular loop of PLP and/or its state of oligomerization. Instrumental in transcytotic PLP transport are, among others, the t-SNARE syntaxin 3, which mediates PLP's insertion into the cell body plasma membrane ⁷, and myelin and lymphocyte protein 2 (MAL2), which is known to interact with PLP in an 'apical recycling endosome'-like compartment upon its internalization from the plasma membrane ¹²¹.

Interestingly, in the CNS, MAL, a regulator of direct apical sorting and delivery in epithelial

cells^{149,151,157}, is upregulated in OLGs during the period of active myelination, i.e., 3-5 days after the onset of PLP expression^{36,37,159}. Therefore, MAL may interfere with PLP trafficking, as the protein is known to tightly associate with galactosylceramide (GalC) and sulfatide, both lipids being relevant to PLP's localization in distinct membrane microdomains^{7,11,15}. At steady state, MAL is predominantly localized in compact myelin and colocalizes with PLP and MBP¹⁵⁵. It has been suggested to be involved in stabilization and maintenance of membrane domains in myelin, while a role in the maintenance of axon-glia interactions has also been proposed^{131,166}. Furthermore, in MAL-deficient mice the expression levels of MAG, MBP, and NF155 in myelin and myelin-derived membrane microdomains were reduced¹³¹. These observations might thus hint at a role for MAL in the delivery efficiency of myelin-specific proteins at the level of sorting and/or trafficking of myelin directed transport vesicles.

Here, we have addressed the question whether expression of MAL interferes with PLP trafficking. To this end, we expressed MAL in oligodendrocyte progenitor cells (OPCs), PLP-expressing OLN-93 and polarized HepG2 cells, and studied the expression, trafficking, localization and lateral membrane distribution of PLP. Our data indicate that vesicular trafficking of *de novo* synthesized PLP to the cell body plasma membrane is not affected by MAL, but rather that the protein interferes with PLP's partitioning in TX-100-soluble, CHAPS-insoluble membrane microdomains. We propose that when myelin membrane assembly progresses and/or during maintenance, when a compact myelin membrane organization has been realized, this mechanism would preclude extensive PLP internalization via CHAPS-resistant membrane domains, and rather, allows for 'direct' lateral segregation of PLP from the plasma membrane towards the myelin membrane.

MATERIALS AND METHODS

Constructs

PLP-eGFP (pEGFP-N1-PLP) and mCherry-MAL (N-terminus tagged) were kind gifts of Dr. Niels Hellings (Hasselt University, Belgium), and Dr. Miquel Alonso (Universidad Autònoma de Madrid, Spain), respectively. The mCherry-MAL insert was excised with AgeI and Kpn1 from the pmCherry-C1 plasmid and 'blunt-end' ligated into the EcoRV-site of the pENTRA1A plasmid. Inserts from pENTRA1A were recombined into pLenti-CMV-Pur (Addgene #17452) or pLenti-CMV/TO-Hygro (Addgene #17291) using Gateway® LR Clonase II Enzyme mix (Life Technologies) according to manufacturer's instructions. The orientation and the integrity of the obtained constructs were confirmed by DNA sequencing.

Cell culture

Primary oligodendrocytes: Pregnant Wistar rats were purchased from Harlan (Netherlands). Animal protocol were evaluated and approved by the Institutional Animal Care and Use Committee of the University of Groningen (Netherlands). Primary cultures of OLGs were prepared from forebrains of 1-2 day old Wistar rats using a shake-off procedure as described previously^{213,220}. OPCs were plated in SATO medium supplemented with the growth factors FGF-2 (10 ng/ml, Peprotech, London, UK) and PDGF-AA (10 ng/ml, Peprotech) on poly-L-lysine (PLL, 5 µg/ml, Sigma, St. Louis, MO)-coated 10 cm dishes (Nunc, Naperville, IL, 1.0 10⁶ cells/dish) or 13-mm-coverslips (30,000 cells/well), for biochemical and immunocytochemical analysis, respectively. After 2 days ('OPCs'), differentiation was initiated by switching to SATO medium supplemented with 0.5% fetal calf serum (FCS, Bodinco, Alkmaar, the Netherlands), and cells were grown for 3 days (imOLGs) or 7-10 days (mOLGs).

OLN-93 cells: The rat-derived oligodendroglia derived cell line, OLN-93 (a kind gift of Dr. Christiane Richter-Landsberg, University of Oldenburg, Germany,²³⁶) that express the galactolipids GalC and sulfatide with PLP-eGFP (OLN-PLP-GS, γ) or without PLP-eGFP (OLN-GS,^{15,62}) were cultured in DMEM containing 10% FCS. After transduction of OLN-GS and OLN-PLP-GS cells with mCherry-MAL, transduced cells (OLN-GS-MAL and OLN-PLP-GS-MAL) were selected in 100 µg/ml hygromycin for 5 days. Transfection of OLN-GS-MAL cells with the plasmid pLEGFP-N1-PLP was performed with Lipofectamin 2000 (Invitrogen, Breda, The Netherlands), **according to the manufacturer's instructions**. OLN-93 cells were plated in 10 cm dishes (200.000 cells/dish) for Western Blot and gradient analysis, or on 13-mm-coverslips (10.000 cells/coverslip) for immunocytochemical analysis and grown for 2-3 days.

HepG2 cells: HepG2 cells that stably express PLP-eGFP (HepG2-PLP, γ) were cultured in DMEM containing 10% FCS. After transduction of HepG2-PLP cells with mCherry-

MAL, transduced cells were selected in 400 µg/ml hygromycin for 5 days. HepG2 cells were plated in 10 cm dishes (500.000 cells/dish) for Western Blot and gradient analysis, on 13-mm-coverslips for immunocytochemical analysis (30.000 cells/coverslip), or 40.000 cells in a Labtek chambered coverglass (Nunc # 155383) for live-imaging and analysed after 2 days in culture.

Rat brain tissue

Brain tissue of Wistar rats was homogenized, using a Wheaton homogenizer, in 1 ml of ice-cold TE buffer [10 mM Tris-HCl, 2 mM EDTA, 0.25 M sucrose and a cocktail of protease inhibitors (Complete Mini, Roche Diagnostics, Mannheim, Germany)] at the indicated age. Samples were stored at -80°C until further biochemical analysis.

Production of lentiviral particles and transduction

For production of lentiviral particles, the constructs, packaging, and envelope plasmids (pRSV-Rev and pMD.G) were transfected into the HEK293T packaging cell line using calcium phosphate. Two days after transfection, medium was refreshed, and conditioned medium was collected after 24 hrs, filtered (Millipore, 0.45 µm pore size), and either used immediately or stored frozen at -80 °C. OLN-93 cells, HepG2 cells, and OPCs (48 hrs before the shake-off procedure) were transduced for 16 hrs with lentiviral particles supplemented with 4 µg/mL hexadimethrine bromide (polybrene; Sigma).

Detergent extraction and membrane microdomain isolation

Cells were washed with PBS, and harvested by scraping the cells in TNE-lysis buffer (50 mM Tris-HCl, pH 7.5, 150 mM NaCl, 5 mM EDTA, and protease cocktail inhibitors) containing either 1% TX-100 or 20 mM 3-[(3-cholamidopropyl)dimethylammonio]-2-hydroxy-1-propanesulfonate (CHAPS). Tissue homogenates were extracted with either 1% TX-100 or 20 mM CHAPS. The solution was passed 10 times through a 21-gauge needle and incubated on ice for at least 30 min. The protein content was determined by a Bio-Rad DC Protein Assay (Bio-Rad Laboratories, Hercules, CA), using bovine serum albumin (BSA) as standard. Detergent soluble and insoluble fractions were obtained as described previously¹¹⁴. Membrane microdomains were isolated using density gradient centrifugation and a discontinuous OptiPrep gradient. To this end, equal amount of protein (500 µg in 250 µl) of total cell detergent extracts or tissue homogenates were added to 500 µl of 60% OptiPrep (Lucron Bioproducts, Milsbeek, the Netherlands). This 40% OptiPrep solution was overlaid with 30% and 10% OptiPrep. Gradients were centrifuged overnight at 152,000 g (SW55 Beckman, 4°C) and seven gradient fractions were collected from the top (fraction 1) to the bottom (fraction 7), and subjected to Western blot or dot blot analysis. The lateral

distribution of PLP(-eGFP), caveolin and GM1 was calculated from the protein's (infrared) intensity in either fractions 3-4 (membrane microdomains) or fractions 6-7 (non-membrane microdomains), relative to the total intensity, i.e., measured collectively in all fractions.

Immunocytochemistry

Cells were stained with antibodies for the cell surface lipids GalC and sulfatide (Ranscht-mAb (R-mAb), a kind gift of Dr. Guus Wolswijk, NIN, Amsterdam, The Netherlands, ²¹⁷), A2B5 (1:10, a kind gift of Dr. Thijs Lopes-Cardozo), PLP (ET3, 1:50, a kind gift of Dr. Elisabeth Trifilieff, University of Strasbourg, France, ⁷), and O10 (1:5, a kind gift of Dr. Evi Albers-Krämer, University of Mainz, Germany, ²³⁷). After blocking non-specific binding with 4% BSA in PBS for 10 min, cells were incubated with primary antibodies for 30 min, washed three times and incubated for 25 min with appropriate FITC- or TRITC-conjugated antibodies (1:50, Jackson ImmunoResearch, West Grove, PA). The cells were fixed with 4% paraformaldehyde (PFA) in PBS for 20 min at RT, after which the nuclei were stained with DAPI (1 μ g/ml, Sigma). For staining of intracellular antigens, cells were fixed with 4% PFA for 20 min at RT. Fixed cells were either permeabilized with ice cold methanol (MBP) for 10 min and subsequently blocked with 4% BSA in PBS for at least 30 min at RT, or with 0.1% TX-100 (PLP, MRP2) in 4% BSA in PBS for 30 min. The cells were incubated for 1-2 hrs with primary antibodies directed against MBP (Serotec, Oxford, UK, 1:250), PLP (4C2, 1:10, a kind gift of Dr. Vijay. Kuchroo, Harvard Medical School, Boston, MA, ²¹⁸), and MRP2 (1:300, Axxora, Lörrach, Germany) at RT. The cells were washed with PBS and incubated with FITC-conjugated secondary antibodies supplemented with DAPI for 25 min at RT. The samples were analyzed with an immunofluorescence microscope (Olympus AX70 or Leica DMI 6000 B), or a Leica SP8 AOBS CLSM confocal microscope (Leica Microsystems, Heidelberg, Germany) in combination with Leica Confocal Software. Data were processed using Adobe Photoshop software. OLGs were characterized by morphology, i.e., cells with a typical astrocytic morphology were excluded, and in each experiment at least 300 cells were scored as either antigen-positive or antigen-negative. To compare the percentage of PLP-eGFP-positive bile canalicular (BC) apical lumens between the conditions, images were acquired with a Zeiss AxiObserver Z1 microscope equipped with TissueFAXs (Tissuegnostics, Vienna, Austria). The number of PLP-eGFP-positive BCs of MRP2-positive BCs per mm² was determined by TissueQuest analysis (Tissuegnostics).

Live cell imaging

For live cell imaging of HepG2-PLP and HepG2-PLP-MAL cells 2 days after plating were used. Cells were imaged every minute for an hour at 37°C, 5% CO₂ in the presence of cycloheximide (50 μ g/ml) using a Solamere Nipkow confocal microscope. The direction of PLP-eGFP-containing vesicles was determined in Fiji using the manual tracker plugin (Fabrice Cordelières ²³⁸). To this end, 10 vesicles per cell were tracked for 6 min in 5 cells in

each of the three independent experiments, and the direction scored as towards or away from the BC when a clear direction was apparent.

Western blot and dotblot analysis

Cells pellets were lysed in TNE-lysis buffer for 30 min on ice. Equal protein amounts (20 µg for cells, 25 µg for tissue) or volume (60 µl for gradients) were mixed with SDS-reducing sample buffer, heated for 5 min at 95°C or 30 min at 37°C (PLP) and subjected to SDS-PAGE (10% or 12.5% SDS-gels) and Western blotting as described previously²²⁰. For dotblot analysis, equal volumes of the gradient fractions (10 µl) were applied onto nitrocellulose membrane, and when dried subjected to similar immunoblot analysis as for the Western blots. Primary antibodies used were anti-GFP (1:500, Invitrogen, Molecular Probes, Eugene, OR), anti-MAL (6D9, 1:400, a kind gift of Dr. Miquel Alonso, Universidad Autonomo de Madrid, Spain,²³⁹), anti-caveolin (BD Transduction Laboratories, Lexington, KY), or anti-actin antibody (1:1000; mouse monoclonal, Sigma). GM1 was visualized with biotinylated CTB (Sigma). The signals were detected using the Odyssey Infrared Imaging System (Li-Cor Biosciences, Lincoln, NE) and analysed using Odyssey V3.0 analysis software or Scion Image software (Scion Corp., Frederick, MD).

Statistical analysis

Data are expressed as mean ± standard deviation (SD) and were obtained from at least three independent experiments. Statistical analysis was performed using a two-tailed Student's t-test or the one sample t-test when compared relative to control (set to 100% in each independent experiment). In all cases a *p* value of *p* < 0.05 was considered significant.

RESULTS

Premature MAL expression in OPCs impairs terminal oligodendrocyte differentiation

Following its biosynthesis, PLP is transported to myelin membranes via a transcytotic pathway, which provides a means to regulate the timely appearance of the protein in the myelin sheet, thereby preventing premature compaction. In the CNS, MAL, a regulator of polarized (apical) membrane transport in epithelial cells, is expressed after PLP^{36,37,159} suggesting that this protein, also given its association with galactosphingolipids and their presence in membrane microdomains, may interfere with PLP trafficking. The relatively delayed developmental expression of endogenous MAL in primary cells has in fact hampered progress in understanding its potential function in trafficking of (myelin) proteins in OLGs. We therefore decided to express MAL in OPCs, which would enable us to monitor PLP trafficking upon maturation of the cells to OLGs. Accordingly, an mCherry-MAL construct was expressed in OPCs by means of lentiviral transduction. Importantly, previous studies have shown that the localization of N-terminus tagged MAL is virtually indistinguishable from that of endogenous MAL, while C-terminus tagged MAL is retained in the endoplasmic reticulum²⁴⁰. In polarized MDCK cells, endogenous MAL has been described as an itinerant protein that cycles between the trans-Golgi network and the plasma membrane¹⁵². To verify whether similar properties apply to mCherry-MAL-expressing cells of the OLG lineage, we first examined its localization during OLG maturation, using stage-specific markers. Upon maturation of OPCs to OLGs, distinct developmental stages can be distinguished. Overall, the cell morphology changes from a bipolar OPC to one that has multiple primary and secondary processes (immature OLGs), while in mature primary OLGs laminar myelin sheets can be distinguished. As shown in Figure 1A, and consistent with observations in MDCK cells, mCherry-MAL was prominently present at the plasma membrane of the cell body and at the perinuclear region in A2B5-positive OPCs. Upon further differentiation to R-mAb-positive immature OLGs, mCherry-MAL increasingly accumulated in vesicular structures primarily localized near the cell membrane of the cell body, whereas in MBP-positive sheet forming OLGs, i.e., at the mature OLG stage, mCherry-MAL was largely present in the perinuclear region and the primary processes. As noted above, in mature MAL-expressing OLGs, the localization of mCherry-MAL and endogenous MAL is comparable (Fig. 1A cf. 1D). Furthermore, the morphology of mCherry-MAL expressing OLGs was indistinguishable from that of control OLGs.

To determine whether (premature) expression of MAL affects the development of OLG maturation, we next examined proliferation and differentiation of mCherry-MAL expressing cells, relative to non-expressing cells. Expression of MAL did not affect the proliferation of the cells (Fig. 1B). Thus, in the presence of growth factors PDGF-AA and FGF-2, approx. 20% of both MAL-expressing and control OPCs were positive for Ki67, a marker reflecting cell proliferation, while being absent from resting cells. The onset of terminal differentiation is defined by the surface expression of GalC and sulfatide (recognized by the

R-mAb), whereas the expression of MBP and PLP prominently occurs in mature, myelin membrane forming OLGs. Therefore, to establish whether mCherry-MAL affects OLG differentiation, the number of R-mAb-, MBP-, and PLP-expressing cells was determined by immunocytochemistry. One week after initiating differentiation, it is apparent that the levels of R-mAb surface expressing cells in control and mCherry-MAL cells were virtually identical (Fig. 1C). In contrast, in mCherry-MAL-expressing OLGs the number of MBP- and PLP-

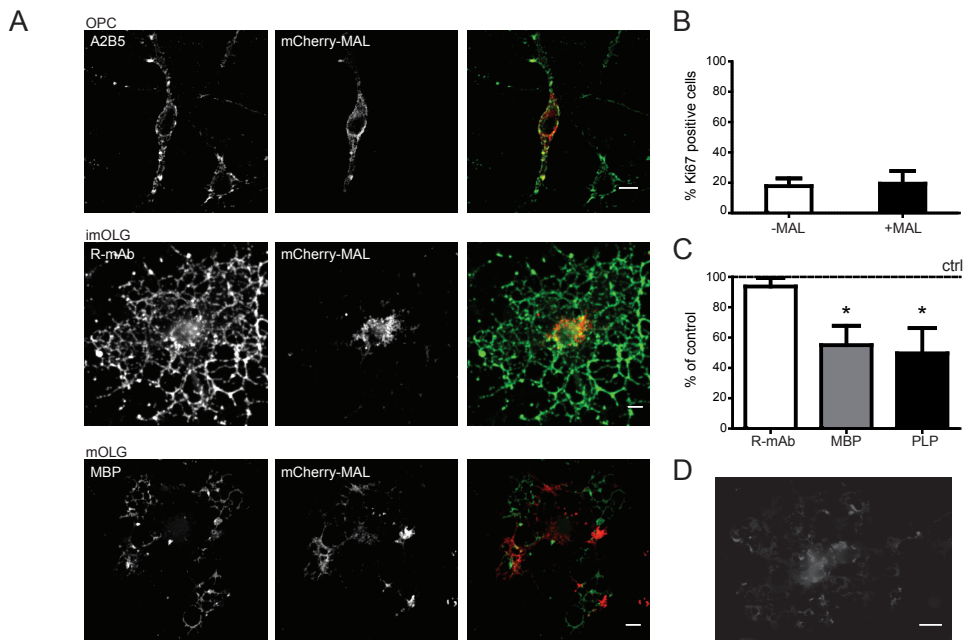


Figure 1. Localization and effect of (mCherry)-MAL on proliferation and differentiation upon expression in oligodendrocyte progenitor cells

mCherry-MAL was lentivirally transduced in oligodendrocyte progenitor cells (OPCs) and cells were allowed to differentiate till immature (imOLGs) and mature (mOLGs) oligodendrocytes. **A**) Localization of mCherry-MAL in A2B5-positive OPCs, R-mAb-positive imOLGs, and MBP-positive mOLGs. Representative pictures of at least three independent experiments are shown. **B**) The percentage of proliferative OPCs, i.e., Ki67-positive of total mCherry-MAL-positive and mCherry-MAL-negative cells was determined. Each bar represents the mean + SD of three independent experiments. Statistical analysis were performed using the student's t-test (not significant). **C**) The percentage of R-mAb-, MBP-, and PLP-positive mOLGs of total mCherry-MAL-positive and mCherry-MAL-negative cells was determined. In each experiment, the % of MAL-negative cells was set to 100% (horizontal line). The percentage of MBP- and PLP-positive cells in MAL-negative cells were $35.4 \pm 14.7\%$ and $60.0 \pm 9.3\%$, respectively. Each bar represents the mean + SD of three to five independent experiments. Statistical differences with mCherry-MAL-negative cells as assessed with a one sample t-test is shown (* $p < 0.05$). Note that the number of MBP- and PLP-positive cells, but not R-mAb-positive cells, is reduced in cells that express mCherry-MAL. **D**) Localization of endogenous MAL in mOLGs. Scale bars are 10 μ m.

positive cells was reduced by approx. 40%. Microscopical examination of mCherry-MAL-expressing cells (Fig. 1A) revealed that the localization of MBP, in cells expressing the protein, as well as the outgrowth of myelin membranes, were seemingly unimpaired. However, more drastic alterations by premature expression of MAL were detected in the processing of the transmembrane protein PLP, as described next. Thus our data reveal that MAL expression does not interfere with proliferation of OPCs, but rather impeded terminal differentiation of the cells.

Premature MAL expression modulates the lateral plasma membrane distribution of PLP

As demonstrated above, once terminally differentiated, the overall outgrowth of processes and myelin sheets in MAL-expressing cells in culture, is not impaired based on morphological criteria and MBP expression. Yet, in contrast to MBP, which is transported in mRNA granules and locally expressed in the sheet^{241,242}, PLP is trafficked in transport vesicles, following biosynthesis at the endoplasmic reticulum. Given the known role of MAL in protein sorting in polarized transport we therefore next investigated whether prematurely expressed MAL might interfere with PLP transport in developing OLGs. First, the localization of PLP was determined by immunofluorescence. As seen in Figure 2A, in mCherry-MAL-expressing cells, PLP seemed to accumulate as punctate spots in the cell body and at the beginning of primary processes (Fig. 2A, 4C2). PLP and mCherry-MAL hardly if at all colocalize in the vesicular structures (Fig. 2A, 4C2, inset), suggesting that they are not extensively co-transported. PLP is a multispinning membrane protein, and upon its transcytotic transport to the myelin membrane via the cell body plasma membrane, the secondary structure of the second extracellular loop changes as a function of its local environment within the plane of membrane²⁴³. Thus, although both anti-extracellular PLP antibodies (ET3 and O10) are directed against a conformational epitope in the second extracellular loop, ET3 most prominently binds to PLP when present in TX-100-insoluble membrane microdomains at the cell body plasma membrane, whereas O10 staining is more intense when PLP is localized in the processes and myelin membrane^{7,237}. Remarkably, while the ET3 epitope was mainly exposed at the surface of the cell body plasma membrane in control cells, displaying a somewhat clustered appearance, the staining pattern of ET3 in mCherry-MAL expressing OLGs was less confined to the cell body plasma membrane, whereas its distribution pattern was more laterally diffuse (Fig. 2A). The O10 epitope was accessible at the surface, displaying very similar distributions, irrespective of MAL expression, although the intensity of the O10 staining was in most cases severely reduced in mCherry-MAL-expressing cells (Fig. 2A).

Hence, despite a substantial intracellular accumulation of PLP in the cell body of MAL-expressing cells, a fraction of PLP is transported to the surface, and subsequently acquires access to the entire OLG surface membrane. The ET3 staining in particular suggested changes in the overall lateral distribution of PLP in mCherry-MAL-expressing cells, which are possibly related to the protein's integration in different membrane (micro)domains. Therefore, the question arises whether the distinction in lateral distribution of PLP derives from different

transport pathways, operating in mCherry-MAL-expressing cells, compared to those seen in control cells. Previously, we have shown that upon inhibition of sulfatide biosynthesis

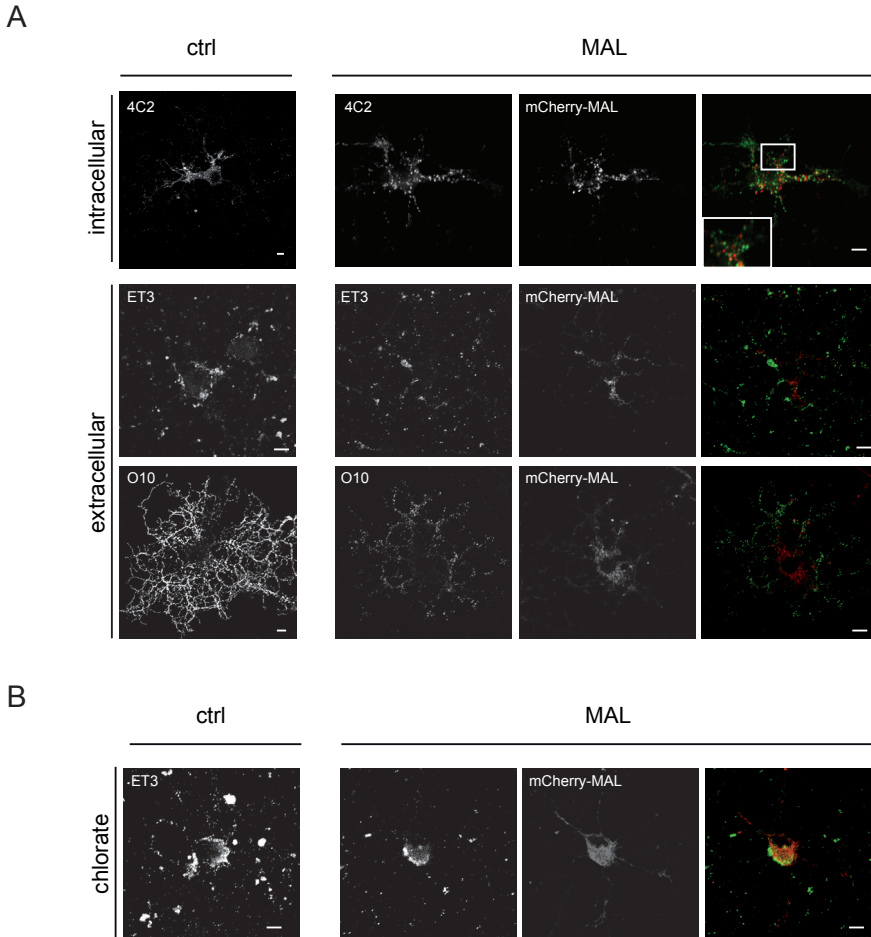


Figure 2. Localization of PLP in mCherry-MAL expressing oligodendrocytes

mCherry-MAL was lentivirally transduced in oligodendrocyte progenitor cells (OPCs) and cells were allowed to differentiate till immature (imOLGs, **B**) or mature (mOLGs, **A**) in the absence (**A**) or presence (**B**) of sodium chlorate, an inhibitor of sulfatide synthesis and shown to prevent transcytosis of PLP (chlorate, **B**⁷). The intracellular localization of PLP was determined with anti-PLP antibody 4C2, and the surface localization of PLP was determined by immunostaining using anti-PLP antibodies directed against extracellular epitopes (ET3, O10). Representative pictures of at least three independent experiments are shown. Scale bars are 10 μ m. **A**) Note that ET3 primarily binds to the cell body plasma membrane of control mOLGs, whereas its distribution was more dispersed in cells that express mCherry-MAL, while intracellular PLP appears to be more intense in primary processes rather than the myelin membrane. **B**) Note the similar surface expression of PLP (ET3) at the cell body plasma membrane in control and mCherry-MAL transduced imOLGs upon chlorate treatment.

by sodium chlorate, PLP transport is blocked at the plasma membrane of the cell body ⁷, implicating sulfatide as an essential requirement for subsequent transcytotic PLP transport to the myelin membrane. Therefore, to examine if an indirect sulfatide-dependent route for PLP still operates in MAL-expressing cells, OPCs were treated with sodium chlorate, a competitive inhibitor of sulfation, followed by the analysis of the surface expression of PLP. As shown in Figure 2B, in the absence of sulfatide, surface PLP that harbors the ET3 epitope, remains predominantly localized at the plasma membrane of the cell body in both non-expressing and mCherry-MAL-expressing cells. These data would imply that also in MAL-expressing cells sulfatide-dependent transcytotic transport is still functional. Of interest, the seemingly altered localization of mCherry-MAL in the absence of sulfatide, emphasizes a relatively strong relation between sulfatide and MAL, as shown previously ^{155,166}. This competitive interaction could thus affect the efficiency of sulfatide-mediated transcytotic transport of PLP. Thus, these findings show that also in mCherry-MAL-expressing cells PLP is primarily transported to the cell body plasma membrane. However, the altered lateral distribution in surface exposure of the ET3 epitope of PLP in MAL-expressing cells, would thus indicate that subsequent transport to the myelin membrane would have occurred, independent of sulfatide-dependent transcytotic transport. Alternatively, once deposited at the myelin membrane, its molecular environment may have (partly) altered in such a way that the ET3 epitope is (re)recognized. To analyze whether the observed alteration in surface staining of PLP was also accompanied by an altered lateral membrane distribution of the protein, we next examined the effect of MAL expression on PLP surface expression and lateral membrane distribution in the oligodendroglial cell line OLN-93, which allowed us to analyze the effect of MAL *after* PLP is expressed, which more closely mimics the *in vivo* situation.

MAL modifies the lateral membrane localization of PLP in OLN-PLP-GS cells

To further clarify the role of MAL in PLP transport and its lateral membrane distribution, we made use of our previously established OLN-93-derived cell line OLN-PLP-GS ⁷. In contrast to parental OLN-93 cells, OLN-PLP-GS cells express GalC and sulfatide, as well as PLP-eGFP. In these cells PLP-eGFP transport to the plasma membrane displays similar features as in primary OLGs. Thus, in line with the observations in primary OLGs, in OLN-PLP-GS cells, the ET3 epitope is mainly exposed at the cell body, while the O10 epitope emerges at the processes ⁷, (Fig. 3A). In addition, at steady state conditions PLP mainly resides in CHAPS-resistant, TX-100-soluble membrane microdomains ⁷, (Fig. 3B). When MAL is lentivirally transduced in OLN-PLP-GS cells (OLN-PLP-GS-MAL), i.e., expressed after PLP expression as occurs during development, the characteristic staining of antibody ET3, almost exclusively restricted to the cell body plasma membrane, becomes severely perturbed (Fig. 3A). Thus, a pronounced staining of the processes is now also observed, very similar as occurs in primary OLGs upon (premature) MAL expression (Fig. 2A). By contrast, the lateral distribution of the O10 epitope remains largely unaltered. As noted, the exposure of the ET3 and O10 epitopes reflects differences in PLP's partitioning in different membrane microenvironments ^{7,243}. Specifically, transcytotic PLP transport is characterized by a dynamic

shift in partitioning of PLP into distinct membrane microdomains, which is accompanied by a conformational change in the protein. Thus, following biosynthesis, PLP transiently resides in TX-100-resistant membrane microdomains in plasma membrane-directed transport vesicles and after arrival at the cell body plasma membrane. At the plasma membrane, the protein is subsequently segregated into CHAPS-resistant, but TX-100-soluble microdomains prior to its internalization and transport to myelin membranes^{7,11}. This dynamic is reflected by a membrane-microdomain dependent change in the exposure of the conformational epitopes ET3 and O10, respectively^{7,243}. To analyze whether the altered lateral surface distribution of PLP in MAL-expressing cells, as particularly reflected by a change in the lateral distribution of the ET3 epitope, was accompanied by an altered partitioning into membrane microdomains, the detergent (in)solubility of PLP was determined upon extraction with 20 mM CHAPS or 1% TX-100. Membrane microdomains were isolated via density gradient centrifugation, and PLP was visualized by Western blot. In the gradients, fractions 3-4 are considered to represent membrane microdomain (raft) fractions, as reflected by a relative enrichment of the membrane microdomain marker caveolin-1 in these fractions, whereas fractions 6-7 represent non-raft fractions (Fig. 3B). In MAL-expressing cells, a slight redistribution of PLP to TX-100-insoluble fractions was observed, as compared to non-expressing cells (Fig. 3B, C $11.0\pm 8.8\%$ in OLN-PLP-GS vs $27.6\pm 16.6\%$ in OLN-PLP-GS-MAL cells), while the distribution of caveolin-1 remained similar. In both cell types, the major fraction of PLP was CHAPS-resistant ($57.3\pm 18.9\%$ in OLN-PLP-GS vs $55.3\pm 20.9\%$ in OLN-PLP-GS-MAL cells). In contrast, when MAL was expressed before PLP (OLN-GS-MAL-PLP cells), the incorporation of PLP in CHAPS-insoluble membrane microdomains was significantly reduced ($57.3\pm 18.9\%$ in OLN-PLP-GS vs $27.4\pm 8.7\%$ in OLN-GS-MAL-PLP cells). Since OLN-93 cells do not produce proper myelin sheets and hence, cannot be regarded as genuinely polarized cells, we next investigated the effect of MAL on PLP's localization in a well-characterized polarized cell model.

MAL modifies the lateral membrane localization of PLP in HepG2 cells

The hepatic cell line HepG2 may serve as a valuable model to study PLP transport. Polarized HepG2 cells have functional apical and basolateral membrane domains that are separated by tight junctions. In these cells, newly synthesized surface membrane proteins are either transported via direct pathways or via transcytosis to their surface destination, i.e., either the basolateral or apical membrane. Previously, we have shown that in polarized HepG2 cells, PLP-eGFP, when expressed in these cells, localizes to both the apical domain, i.e., the bile canalicular (BC) membrane in liver cells, and the basolateral domain⁷ (Fig. 4A). Furthermore, at steady state conditions, PLP-eGFP partitions in membrane microdomains, displaying very similar detergent resistance properties as those observed in primary OLGs⁷ (cf. Fig. 6, see below). Moreover, HepG2 cells lack endogenous MAL¹⁵⁷ (Fig. 4C), making these cells an ideal model to study the effect of MAL on PLP transport and lateral membrane distribution. As shown in Figure 4A, in control, MAL-devoid HepG2 cells, PLP-eGFP is primarily present at both the apical and basolateral membrane, while only a minor fraction

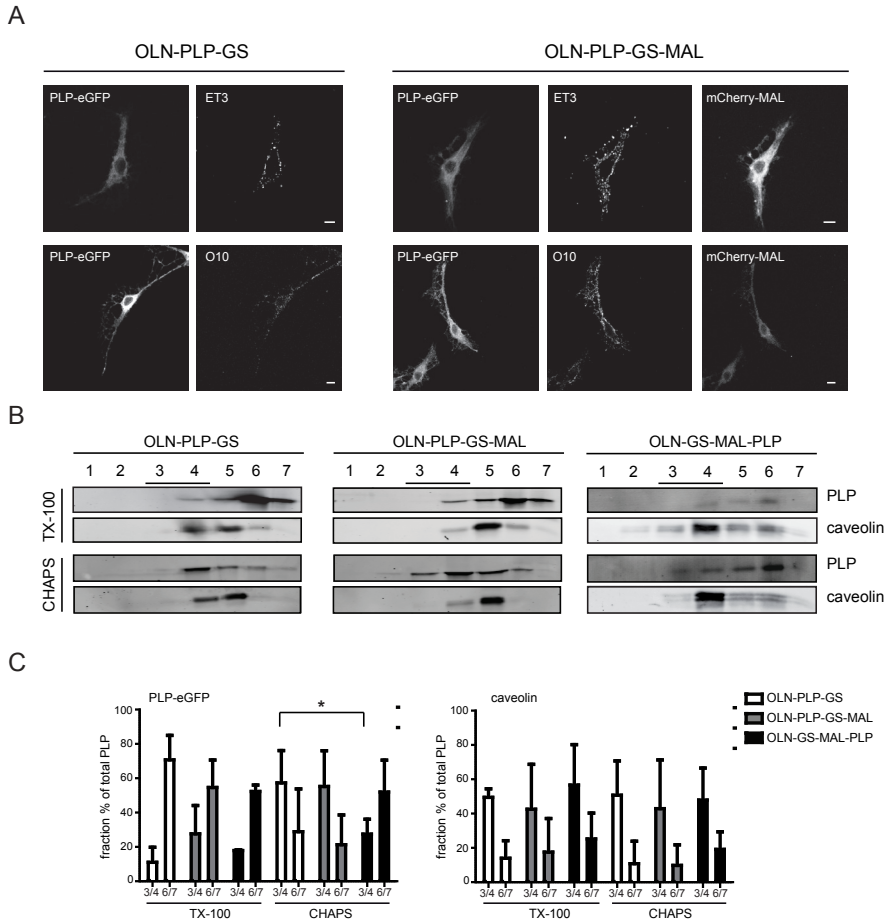


Figure 3. Localization and membrane microdomain association of PLP in OLN-PLP-GS and OLN-PLP-GS-MAL cells

A) Localization of PLP in OLN-PLP-GS cells in the presence (OLN-PLP-GS-MAL) and absence of MAL. MAL is expressed after PLP-eGFP. ET3 and O10 recognize distinct extracellular PLP epitopes. Representative pictures of at least three independent experiments are shown. Scale bars are 10 μ m. Note that upon expression of MAL the ET3 PLP surface epitope is exposed along the entire plasma membrane, while being restricted to the cell body in the absence of MAL. **B, C)** OLN-PLP-GS, OLN-PLP-GS-MAL and OLN-GS-MAL-PLP cells were extracted with TX-100 (1%) or CHAPS (20 mM) at 4°C and subjected to OptiPrep density centrifugation. PLP-eGFP (anti-GFP) and caveolin were visualized by Western blot. Representative blots of two to four independent experiments are shown in **B**, quantitative analyses in **C**. The protein percentage of each fraction was calculated by dividing the protein percentage in that fraction by total protein expression. Bar graphs of the pooled fraction percentage of (membrane microdomain, ‘raft’) fractions 3-4 and (‘non-raft’) fractions 6-7 are shown. Statistical differences with OLN-PLP-GS cells as assessed with a student’s t-test is shown (* $p < 0.05$). Note that upon premature expression of MAL, i.e., prior to transient expression of PLP (OLN-GS-MAL-PLP) the characteristic distribution of PLP in CHAPS-insoluble (membrane microdomain) fractions is reduced, while the lateral distribution of the membrane microdomain marker caveolin is not altered.

localizes to intracellular structures. In MAL-expressing HepG2 cells, a dramatic shift in PLP distribution is apparent, implying a loss of basolateral and apical membrane localized PLP and, instead, a more prominent intracellular accumulation. Interestingly, MAL was mainly present at the apical BC membrane, while a minor fraction resided in intracellular vesicular structures. As observed in primary OLGs, MAL does not significantly colocalize with PLP in the intracellular structures. Following the expression of MAL, the number of double stained BCs, containing both PLP and MRP2 was however markedly reduced (Fig. 4B, approx. 50%). The localization of the apical marker MRP2, similarly as PLP a multispanning membrane

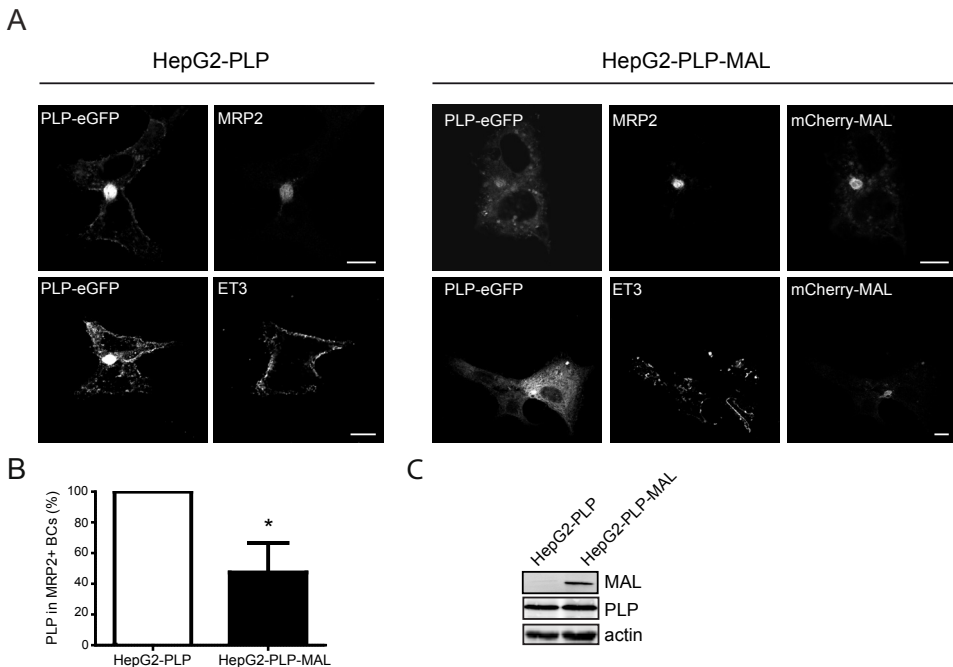


Figure 4. Localization of PLP in HepG2-PLP and HepG2-PLP-MAL cells

A) Localization of PLP-eGFP in HepG2-cells in the presence (HepG2-PLP-MAL) and absence of MAL (HepG2-PLP). MAL is expressed after PLP-eGFP. MRP2 is an apical marker, ET3 recognizes an extracellular PLP epitope. Representative pictures of at least three independent experiments are shown. Scale bars are 10 μ m. Note that upon expression of MAL the expression of PLP-eGFP at the apical surface seems to be reduced, more intracellular structures appear, while still present at the basolateral membrane surface. **B**) Quantitative analysis of the number of PLP-positive of total MRP2-positive bile canaliculi (BCs, apical surface) in HepG2-PLP and HepG2-PLP-MAL cells. Each bar represents the mean + SD of three independent experiments. In each experiment, the % of PLP-positive of total MRP2-positive BCs was set to 100%. In HepG2-PLP cells 41.0 \pm 9.4% of the MRP2-positive BCs were PLP-positive. Statistical differences with HepG2-PLP cells as assessed with a one sample t-test is shown (* $p < 0.05$). Note that the number of PLP-positive BCs is reduced upon expression of MAL. **C**) Western blot analysis of the expression levels of PLP and MAL in HepG2-PLP and HepG2-PLP-MAL cells (anti-MAL antibody). Note that PLP expression is similar in the presence or absence of MAL.

protein, was not visually affected upon MAL expression, indicating that MAL selectively altered the distribution of PLP. In HepG2 cells, antibody ET3 recognizes extracellular PLP-eGFP at the basolateral surface ⁷ (Fig. 4A), while the O10 epitope is not exposed ⁷. Upon MAL expression, a fraction of PLP still localized at the basolateral surface, as visualized with antibody ET3 (Fig. 4A, ET3). In fact, vesicle tracking experiments, in which vesicles were carefully monitored that had a clear directional movement towards or away from the BC surface, revealed that in MAL-devoid, control HepG2 cells, PLP-containing vesicular structures appeared to move more towards the BC, while in MAL-expressing HepG2 cells, the vesicles moved away from the BC, suggesting increased trafficking towards the basolateral membrane (Fig. 5A, B). To analyze whether this alteration of PLP transport was accompanied by an altered lateral membrane distribution of the protein, as reflected by differences in detergent (in)solubility, the detergent (in)solubility of PLP was determined upon extraction with 20 mM CHAPS or 1% TX-100. Expression of MAL altered the relative overall partitioning of PLP in detergent soluble versus insoluble membrane microdomains (Fig. 5C, D). Thus, following extraction with CHAPS in MAL-devoid control HepG2 cells, $52\pm 9\%$ of the PLP-eGFP fraction was present in CHAPS-resistant membrane microdomains (fraction 3-4), while only $29\pm 9\%$ of the PLP-eGFP fraction was present in these membrane microdomains in MAL-expressing HepG2 cells (Fig. 5C, D). An opposite observation was made in case of analysis of TX-100-resistant membrane microdomains, i.e., PLP-eGFP showed some tendency to segregate into TX-100-resistant membrane microdomains when MAL is expressed (Fig. 5 C, D, $22\pm 15\%$ in HepG2-PLP vs $34\pm 23\%$ in HepG2-PLP-MAL cells). As caveolin is not expressed in HepG2 cells, GM1, as visualized on a dotblot with CTB, was used as a marker for membrane microdomains ²⁴⁴. Incorporation of ganglioside GM1 in CHAPS- or TX-100-insoluble membrane microdomains remained unaltered, i.e., irrespective of the presence of mCherry-MAL. Hence, upon expression of MAL the distinct association of PLP with CHAPS-resistant, TX-100-soluble membrane microdomains is substantially diminished in HepG2 cells. To examine whether a similar lateral membrane redistribution of PLP occurs during myelin maintenance, we next determined PLP's detergent (in)solubility during rat brain development.

Increased association of PLP with TX-100-resistant membrane microdomains upon brain development

To examine the detergent (in)solubility of PLP during rat brain development, total brain homogenates, isolated from animals of different age, were extracted with 20 mM CHAPS or 1% TX-100 at 4°C, and soluble and insoluble fractions were separated by centrifugation. As shown in Figure 6A, PLP, although detectable at very low levels at postnatal day 8 (p8), was significantly expressed from postnatal day 16 onwards, i.e., during active myelination, while MAL is clearly expressed at p23. At p16, PLP almost exclusively partitioned in the TX-100-soluble but CHAPS-insoluble fraction (approx. 95%), very similar as observed in cultured OLGs (Fig. 6B, ⁷¹¹). At p23, i.e., at the time MAL is expressed (Fig. 6A), and even more prominently in homogenates isolated from the adult rat brain, PLP increasingly segregated to

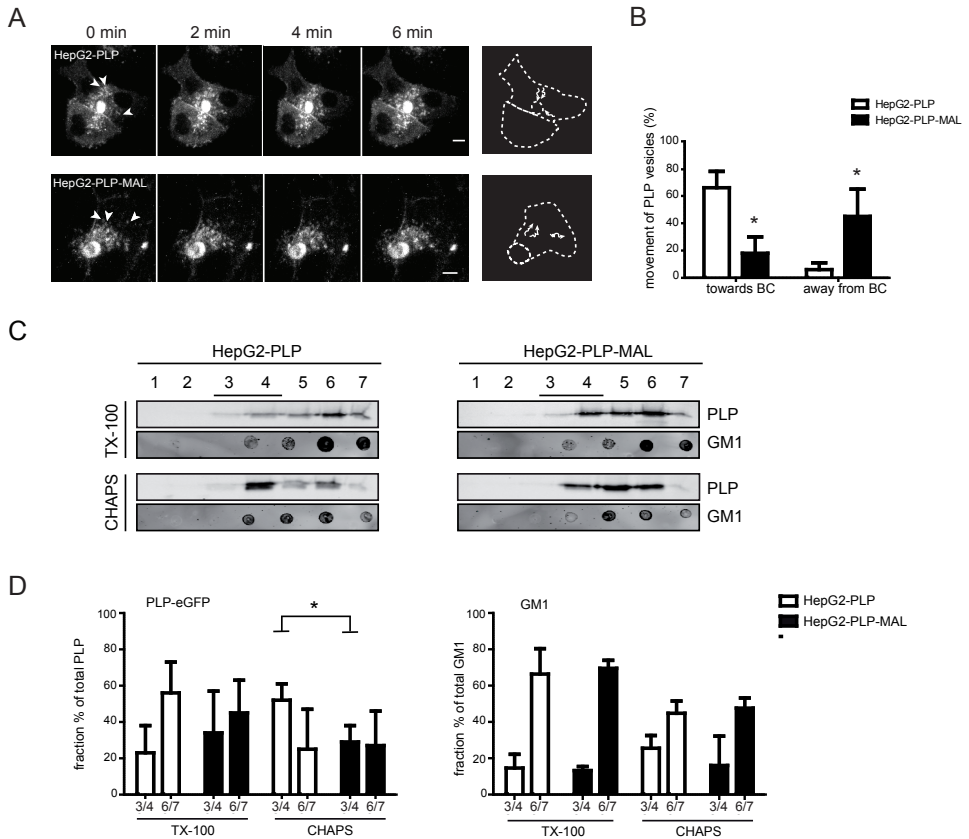


Figure 5. Live cell imaging and membrane microdomain association of PLP-eGFP in HepG2-PLP and HepG2-PLP-MAL cells

A, B) The movement of PLP-eGFP-containing vesicles was recorded in live HepG2-PLP and HepG2-PLP-MAL cells in the presence of cycloheximide for one hour at 37°C and 5% CO₂. Images were acquired every minute. The direction of 10 PLP-eGFP-containing vesicles in 5 cells was tracked for 6 min in Fiji using the manual tracker plugin, and scored as towards or away from the BC when a clear direction was apparent. Representative cells of three independent experiments are shown in **A** (the tracks of 3 vesicles in each cell are indicated), quantitative analysis in **B**. Each bar represents the mean + SD. Statistical differences as assessed with a student's t-test are shown (* $p < 0.05$). Scale bar is 10 μ m. **C, D**) HepG2-PLP and HepG2-PLP-MAL cells were extracted with TX-100 (1%) or CHAPS (20 mM) at 4°C and subjected to OptiPrep density centrifugation. PLP-eGFP (anti-GFP) and GM1 (CTB) were visualized by Western and dot blotting, respectively. Representative blots are shown in **C**, quantitative analyses of three independent experiments in **D**. The protein/lipid percentage of each fraction was calculated by the dividing the protein/lipid percentage in that fraction by total protein/lipid expression. Bar graphs of the pooled fraction percentage of (membrane microdomain, 'raft') fractions 3-4 and ('non-raft') fractions 6-7 are shown. Statistical differences with HepG2-PLP cells as assessed with a student's t-test is shown (* $p < 0.05$). Note that upon expression of MAL the characteristic distribution of PLP in CHAPS-insoluble (raft), TX-100-insoluble (non-raft) fractions is lost, while the lateral distribution of GM1, a membrane microdomain marker, is not altered.

the TX-100-insoluble (approx. 22% at p16, and approx. 49% at p23) fraction, while remaining CHAPS-insoluble (approx. 95% at p16 and p23). To unequivocally determine the association of PLP with TX-100-resistant membrane microdomains during development, CHAPS and TX-100 extracts of homogenates isolated from p8 and p23 rat brains, i.e., at the onset and the end of myelin biogenesis during rat brain development, were loaded on an Optiprep density gradient and analyzed by Western blot. Whereas in p8 total brain homogenates PLP is recovered in TX-100-soluble (Fig. 6C, fractions 5-7, approx. 90%) but CHAPS-insoluble fractions (Fig. 6C, fractions 3-4, approx. 35%), at p23 PLP localized to both TX-100-insoluble (Fig. 6C, fractions 3-4, approx. 37%) and CHAPS-insoluble fractions (Fig. 6C, fractions 3-4, approx. 32%). Hence, these data indicate that the distinct association of PLP with CHAPS-resistant, TX-100-soluble membrane microdomains is diminishing upon rat brain development.

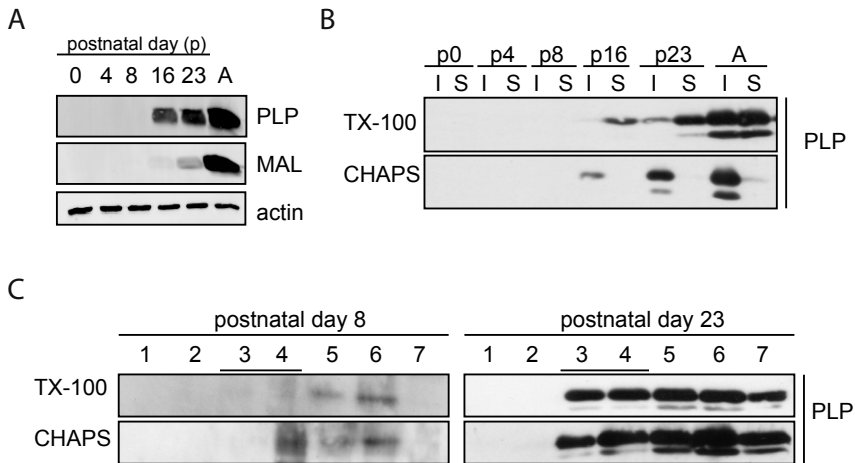


Figure 6. Detergent solubility of PLP during rat brain development

A) Adult rat brains and brains between postnatal days (p)0-23 were homogenized and analyzed for expression of PLP and MAL by Western blotting. Actin serves as a loading control. Note that PLP is expressed before MAL during rat brain development. **B**) After TX-100 (1%) or CHAPS (20 mM) extraction at 4°C and centrifugation, the distribution of PLP in detergent-soluble and -insoluble fraction at the indicated age were analyzed by Western blotting. **C**) Brain homogenates of p8 and p23 rats were extracted with TX-100 (1%) or CHAPS (20 mM) at 4°C and subjected to OptiPrep density centrifugation. PLP was visualized by Western blotting (4C2 antibody). Detergent-resistant membrane microdomains are present in fractions 3-4. Note that upon brain development, PLP's insolubility in TX-100 is increased at the time MAL is expressed.

DISCUSSION

The aim of the present work was to obtain further insight into molecular mechanisms underlying the regulation of the biogenesis of myelin membranes in (polarized) OLGs, with a focus on trafficking of the major myelin protein PLP in particular. Our data suggest that MAL, a known regulator of polarized trafficking in epithelial cells, does not interfere with vesicular trafficking of PLP, following its biosynthesis, to the (apical) cell body membrane. Rather, the protein appears to control the lateral segregation of PLP into distinct membrane microdomains once myelin is formed, presumably by interfering in a competitive manner with PLP's interaction with the sphingolipid sulfatide. We propose that at such conditions, PLP may acquire direct access from the plasma membrane to the sheath via lateral diffusion, possibly avoiding in this manner increasingly frustrated vesicular transport into the sheath when myelin compaction advances. Hence, our findings are of relevance to myelin compaction and maintenance.

To comprehend the effect of MAL on PLP trafficking and the significance of PLP's lateral membrane localization, it is relevant to consider the transport itinerary of the protein in OLGs. In a previous study we have shown that after biosynthesis at the endoplasmic reticulum, PLP is transported via the Golgi to the cell body plasma membrane and subsequently to the myelin sheet, thus following a transcytotic route⁷. Importantly, initial transport to the plasma membrane relies on PLP's integrations into membrane microdomains, characterized by a resistance towards solubilization by TX-100. This initial TX-100 insolubility is transient, since after PLP's departure from the cell body plasma membrane *en route* to the myelin membrane, the protein resides in TX-100-soluble, CHAPS-insoluble membrane microdomains^{7,11,130}. During OLG development, MAL becomes expressed following early PLP expression^{7,11,130}. Indeed, our data highlight the timeliness of MAL expression as its premature expression halts terminal OLG differentiation, reflected by a decreased number of MBP- and PLP-positive cells. This is consistent with observations in Schwann cells, where MAL is expressed at embryonic age day 18¹⁵⁹. Once differentiated, MAL expression did not impair overall myelin biogenesis *per se*, given the appearance of MBP-positive myelin sheets in MAL-expressing OLGs. These findings are in agreement with a normal onset of myelin biogenesis in MAL-deficient mice and the observed hypomyelination when MAL is overexpressed under its own promoter^{131,166}. Also, premature expression of MAL does not seemingly interfere with PLP transport to the cell body plasma membrane, following biosynthesis, and at this condition, the protein does acquire access to the myelin membrane. In PLP-expressing HepG2 cells, MAL strongly reduced the localization of PLP at the apical BC membrane. Simultaneously, MAL expression caused a shift in the partitioning of PLP in distinct membrane domains, reflected by a decreased CHAPS insolubility, and an increased tendency towards TX-100 insolubility. Apart from the notion that sulfatide levels are increased in PLP-expressing HepG2 cells⁷ and that GalC is actively transported, together with sphingomyelin, along a reversed transcytotic pathway (apical to basolateral surface) in HepG2 cells²⁴⁵ and MAL's reported interaction with galactolipids¹⁶⁶, these data would be consistent with presumed mechanistic features in

polarized transcytotic transport in OLGs, in which transport from the intracellular storage endosomes to the basolateral-like myelin sheet similarly depends on GalC¹¹.

Intriguingly, our data reveal that the presence of MAL interfered with the conformation of PLP, localized at the plasma membrane, as a result of a change in PLP's lateral membrane distribution. As shown previously, when transported along the transcytotic pathway, PLP undergoes conformational changes, which are instrumental in its overall transport to the myelin membrane⁷. Specifically, the protein adopts a different conformation after reaching the plasma membrane, prior to its transport to the myelin membrane. However, following expression of MAL in OLGs (premature) and OLN-93 cells (after PLP), this conformation-dependent difference in the localization of PLP was no longer apparent. Thus, in MAL-expressing cells, both conformation-dependent epitopes appear to be evenly distributed over the cell body plasma and myelin membrane. Since the ability of PLP to adopt a specific conformation appears to be related to its partitioning in different membrane microenvironments^{7,243}, a less strict conformation-dependent localization is likely a reflection of a change in its membrane microenvironment. Indeed, the characteristic lateral membrane distribution of PLP in CHAPS-insoluble, TX-100-soluble membrane microdomains is lost in OLN-93 and HepG2 cells upon expression of MAL. Likely, this property of PLP is already acquired in the Golgi and not at the plasma membrane, since in WIF-B cells, MAL expression induced the formation of biosynthetic, cholesterol and glycosphingolipid-enriched domains in the Golgi¹⁵⁷. Of interest in this regard, analysis of MAL-deficient mice revealed that MAL is also required for the proper association of the oligodendroglial paranodal protein NF155 with membrane microdomains¹³¹, further indicating that MAL may interfere with membrane microdomain formation *per se* and/or the partitioning of molecular cargo in such domains. At the molecular level, sulfatide, GalC and cholesterol, i.e., crucial constituents of membrane microdomains are important regulators in transcytotic PLP transport^{11,68}. Since MAL may associate with galactolipids^{155,156} and facilitate their lateral segregation¹⁵⁸, such interactions may readily lead to an interference with the dynamic partitioning of PLP in the distinct TX-100 and CHAPS detergent-resistant membrane microdomains, observed in the absence of MAL. Consistently, also in galactolipid-deficient mice and cultured OLGs, the characteristic distribution of PLP in CHAPS-resistant, TX-100-soluble membrane microdomains is abolished^{7,11}, while PLP transport to myelin membranes still proceeds²⁴⁶. Taking into account that both PLP and MAL can interact with sulfatide, and that MAL expression occurs subsequent to PLP expression in myelin biogenesis, i.e., at a stage where considerable myelin compaction has already occurred, the following scenario could be proposed. During myelin maintenance, i.e., after establishment of compaction, vesicular trafficking into the tightly packed sheet will presumably be severely frustrated. Thus it is tempting to suggest that at those conditions, although newly synthesized PLP may be still transported to the cell body plasma membrane, extensive sulfatide-dependent internalization of microdomains enriched in this glycolipid to which PLP binds, no longer occurs, given the sequestering of the galactolipid by MAL. In further support of this notion, our preliminary data show that in MAL-expressing cells PLP-containing vesicles do not significantly colocalize with LAMP-1, a marker of the presumed endocytic storage compartment of PLP *en route* to the myelin

membrane^{20,139}. Although OLGs are polarized, the plasma membrane and myelin membrane are continuous and, importantly, devoid of tight junction barriers as in classical epithelial cells. This would enable *de novo* supply of membrane proteins, like PLP in fully matured OLGs with compact myelin membranes, to occur by a (slower/passive) lateral diffusion process from the plasma membrane to the myelin sheet, rather than via a (faster/active) vesicular transport route, active during *de novo* assembly of myelin, prior to MAL expression. This would thus rationalize the appearance of the PLP conformational epitope, typical for the proteins' presence in the (plasma membrane-localized) TX-100-resistant membrane microdomains, along the entire OLG membrane. Once formed, the maintenance of myelin, in particular its compacted regions, will likely at least partly rely on delivery of constituents other than by means of vesicular transport^{28,32}. Of particular interest in this context is that neuronal signals that trigger PLP trafficking to myelin membranes, cause a diminished internalization of PLP by endocytosis²⁰, which represents an essential step in the transcytotic pathway. Accordingly, transport by lateral diffusion from the cell body plasma membrane towards the myelin membrane, regulated by the timely expression of MAL as a function of OLG development, might thus represent a most efficient and economical means to compensate for reduced vesicular trafficking of PLP.

To what extent do the data as presented bear physiological relevance? In MAL-deficient mice, PLP is CHAPS-insoluble in adult myelin¹³¹, but without knowledge on its TX-100-(in)solubility, conclusions on its role on PLP's distribution cannot be drawn. Several studies that analyze the detergent (in)solubility of PLP with either CHAPS or TX-100, show that in purified myelin of adult brains, PLP resides in CHAPS-insoluble, TX-100-soluble membrane microdomains^{11,130}. However, there is no consensus yet, since other investigators have shown that PLP is present in TX-100-insoluble membrane microdomains^{68,163,247}. However, this apparent discrepancy in TX-100 (in)solubility may be related to a difference in the salt concentration of the used solubilization buffers²⁴⁷. Here, we show by performing CHAPS and TX-100 extractions in parallel on whole brain homogenates, i.e., containing cells, vesicles and myelin, that upon rat brain development, the characteristic distribution of PLP in CHAPS-insoluble, TX-100-soluble membrane domains as evidenced in cultured cells, was similarly observed at the onset of myelin biogenesis (age p8). At the time of MAL expression (age p23), this pronounced partitioning of PLP in different membrane microdomains becomes substantially perturbed, analogous to what occurs in cultured cells, as shown in the present study. Thus, the present work clearly hints to a role of MAL in regulating the lateral membrane localization of PLP that may be important for its role in myelin compaction and maintenance.

ACKNOWLEDGMENTS

We gratefully acknowledge Dr. Christiaan Slim, Dr. Erik Sikkema and Dr. Sven van IJzendoorn, for the cloning of the mCherry-MAL into the lentiviral expression system, technical assistance with the TissueFAXs and expert support in HepG2-cell experiments, respectively. This work was supported by grants from the Dutch MS Research Foundation (“Stichting MS Research”), and the Netherlands Organization of Scientific Research (NWO, W.B., VIDI and Aspasia).

