

University of Groningen

## Architectural design decisions

Jansen, Antonius Gradus Johannes

**IMPORTANT NOTE: You are advised to consult the publisher's version (publisher's PDF) if you wish to cite from it. Please check the document version below.**

*Document Version*

Publisher's PDF, also known as Version of record

*Publication date:*

2008

[Link to publication in University of Groningen/UMCG research database](#)

*Citation for published version (APA):*

Jansen, A. G. J. (2008). *Architectural design decisions*. s.n.

**Copyright**

Other than for strictly personal use, it is not permitted to download or to forward/distribute the text or part of it without the consent of the author(s) and/or copyright holder(s), unless the work is under an open content license (like Creative Commons).

The publication may also be distributed here under the terms of Article 25fa of the Dutch Copyright Act, indicated by the "Taverne" license. More information can be found on the University of Groningen website: <https://www.rug.nl/library/open-access/self-archiving-pure/taverne-amendment>.

**Take-down policy**

If you believe that this document breaches copyright please contact us providing details, and we will remove access to the work immediately and investigate your claim.

*Downloaded from the University of Groningen/UMCG research database (Pure): <http://www.rug.nl/research/portal>. For technical reasons the number of authors shown on this cover page is limited to 10 maximum.*

---

# APPENDIX

---

## A.1 Archium meta-model

The following figure on the next page gives an overview of the Archium meta-model, as described in chapters 4 and 5. Note, that the description of the internal model elements of the design decision is missing in this figure. The conceptual model presented in figure 4.1 on page 85 presents these elements.

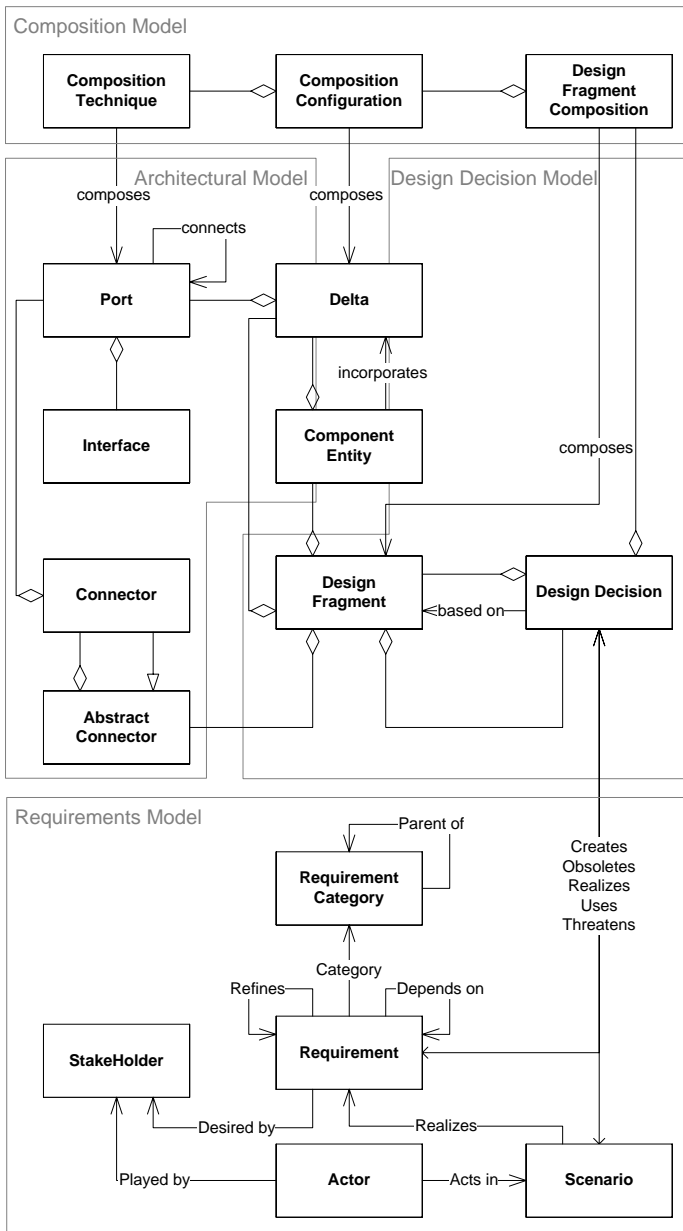


Figure 1: Overview of the complete Archium meta-model