

University of Groningen

Cigarette smoke-induced mitochondrial dysfunction and oxidative stress in

Toorn, Marco van der

IMPORTANT NOTE: You are advised to consult the publisher's version (publisher's PDF) if you wish to cite from it. Please check the document version below.

Document Version

Publisher's PDF, also known as Version of record

Publication date:

2009

[Link to publication in University of Groningen/UMCG research database](#)

Citation for published version (APA):

Toorn, M. V. D. (2009). *Cigarette smoke-induced mitochondrial dysfunction and oxidative stress in*. s.n.

Copyright

Other than for strictly personal use, it is not permitted to download or to forward/distribute the text or part of it without the consent of the author(s) and/or copyright holder(s), unless the work is under an open content license (like Creative Commons).

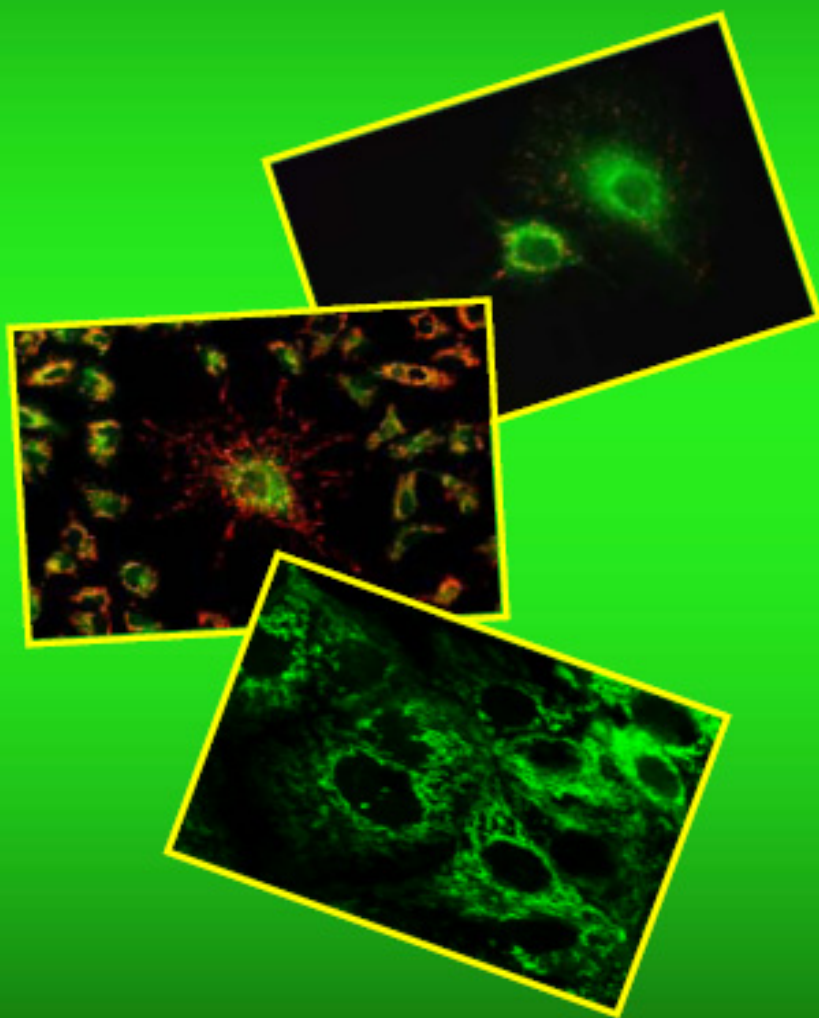
The publication may also be distributed here under the terms of Article 25fa of the Dutch Copyright Act, indicated by the "Taverne" license. More information can be found on the University of Groningen website: <https://www.rug.nl/library/open-access/self-archiving-pure/taverne-amendment>.

Take-down policy

If you believe that this document breaches copyright please contact us providing details, and we will remove access to the work immediately and investigate your claim.

Downloaded from the University of Groningen/UMCG research database (Pure): <http://www.rug.nl/research/portal>. For technical reasons the number of authors shown on this cover page is limited to 10 maximum.

Cigarette Smoke-induced mitochondrial dysfunction and oxidative stress in epithelial cells



Marco van der Toorn

Paranimfen :

H.G. de Bruin

R.K. Kooi

Van der Toorn, M.

Cigarette Smoke-induced mitochondrial dysfunction and oxidative stress in epithelial cells. Thesis University of Groningen with summary in Dutch.

The studies described in this thesis were financially supported by Nierstichting Nederland (Co1.1923), GlaxoSmithKline and Jan Kornelis de Cock stichting.

The printing of this thesis was financially supported by:

Dräger Medical, Nierstichting Nederland, Chiesi Pharmaceuticals, Novartis Pharma, Boehringer Ingelheim, J.E. Jurriaanse stichting, AstraZeneca, GlaxoSmithKline,

Stichting Astma Bestrijding, GUIDE, Nycomed, Phadia, Universitair Medisch
Centrum Groningen, Rijksuniversiteit Groningen.
Their contribution is gratefully acknowledged!

Cover Design: C.H. Roelfsema & M. van der Toorn
Printed by: Drukkerij Doorn, Groningen

© 2009 M. van der Toorn.

All rights reserved. No parts of this book may be reproduced, stored in a retrieval system, or transmitted in any form or by any means, mechanically, by photocopying, recording or otherwise, without the written permission of the author and the publishers of the articles concerned.



**rijksuniversiteit
 groningen**

**CIGARETTE SMOKE-INDUCED MITOCHONDRIAL DYSFUNCTION
 AND OXIDATIVE STRESS IN EPITHELIAL CELLS**

Proefschrift

ter verkrijging van het doctoraat in de
 Medische Wetenschappen
 aan de Rijksuniversiteit Groningen
 op gezag van de
 Rector Magnificus, dr. F. Zwarts,
 in het openbaar te verdedigen op
 woensdag 11 februari 2009
 om 16.15 uur

door

MARCO VAN DER TOORN

geboren op 27 maart 1972
 te Hoogeveen

Promotores : Prof. dr. H.F. Kauffman
Prof. dr. R.O.B. Gans
Prof. dr. G.H. Koëter

Copromotores : Dr. D-J. Slebos
Dr. S.J.L. Bakker

Beoordelingscommissie : Prof. dr. A.M.W.J. Schols
Prof. dr. R.P.H. Bischoff
Prof. dr. H.A.M. Kerstjens

ISBN: 978-90-367-3695-4 (printed version)

ISBN: 978-90-367-3696-1 (digital version)

Lieve Lottie, Yaël, Lior en mijn kleine Jairo,
dit proefschrift draag ik op aan jullie.

CONTENTS

	PAGE
PREFACE	9
GENERAL INTRODUCTION	11
SCOPE OF THE STUDIES	17
1. Cigarette smoke-induced blockade of the mitochondrial respiratory chain switches lung epithelial cell apoptosis into necrosis	21
2. Mitochondria are essential in cigarette smoke induced ROS generation	39
3. Mitochondrial localization and function of Heme Oxygenase-1 in cigarette smoke-induced cell death	53
4. Gaseous-phase cigarette smoke irreversibly modifies glutathione in airway epithelial cells	73
5. Resistance of quiescent and proliferating airway epithelial cells to H₂O₂ challenge	89
6. Cyclosporin-A induced oxidative stress is not the consequence of an increase in mitochondrial membrane potential	107
SUMMARY AND MAIN CONCLUSIONS	125
GENERAL CONCLUSIONS AND FUTURE PERSPECTIVES	131
SAMENVATTING IN HET NEDERLANDS	139
DANKWOORD	149
PUBLICATIONS	151

