

University of Groningen

Author's Reply

Schlingmann, Karl P.; Jouret, Francois; Knoers, Nine V. A. M.; de Baaij, Jeroen H. F.

Published in:
Journal of the American Society of Nephrology

DOI:
[10.1681/ASN.2022030252](https://doi.org/10.1681/ASN.2022030252)

IMPORTANT NOTE: You are advised to consult the publisher's version (publisher's PDF) if you wish to cite from it. Please check the document version below.

Document Version
Publisher's PDF, also known as Version of record

Publication date:
2022

[Link to publication in University of Groningen/UMCG research database](#)

Citation for published version (APA):

Schlingmann, K. P., Jouret, F., Knoers, N. V. A. M., & de Baaij, J. H. F. (2022). Author's Reply: The Subcellular Localization of RRAGD. *Journal of the American Society of Nephrology*, 33(5), 1048-1049. Advance online publication. <https://doi.org/10.1681/ASN.2022030252>

Copyright

Other than for strictly personal use, it is not permitted to download or to forward/distribute the text or part of it without the consent of the author(s) and/or copyright holder(s), unless the work is under an open content license (like Creative Commons).

The publication may also be distributed here under the terms of Article 25fa of the Dutch Copyright Act, indicated by the "Taverne" license. More information can be found on the University of Groningen website: <https://www.rug.nl/library/open-access/self-archiving-pure/taverne-amendment>.

Take-down policy

If you believe that this document breaches copyright please contact us providing details, and we will remove access to the work immediately and investigate your claim.

Downloaded from the University of Groningen/UMCG research database (Pure): <http://www.rug.nl/research/portal>. For technical reasons the number of authors shown on this cover page is limited to 10 maximum.

In summary, this is a significant study that has our full attention. Because the expression location of a protein is closely related to its function, we would be glad to hear from the authors.

METHODS FOR IMMUNOFLUORESCENCE STAINING

The kidney tissues from male C57BL mice and a renal biopsy specimen of a patient with minor glomerular lesion were fixed in 4% paraformaldehyde, embedded in paraffin, and sliced into 3–4 μm sections. The slides were then deparaffinized, rehydrated, and antigen was retrieved using a citrate buffer. After blocking with goat serum for 30 minutes, the sections were incubated with diluted primary antibodies of RRAGD (rabbit anti-RRAGD, NBP2-32106, 1:2000) overnight at 4°C. Fluorophore-labeled secondary antibody (goat anti-rabbit, ab150077, 1:1000; Abcam) and 4',6-diamidino-2-phenylindole (1:1000) were used for nuclear staining. The images were captured using a microscope (Eclipse 80i; Nikon, Tokyo, Japan) with a digital camera (DS-U1; Nikon).

DISCLOSURES

L. Chen reports serving as a member of the American Society of Nephrology (ASN), European Dialysis and Transplant Association, International Society for Peritoneal Dialysis, and International Society of Nephrology; receiving research funding from Baxter; and serving as associate editor of *JASN*. T. Ma reports serving as a member of the ASN and European Renal Association Community. L. Zhang reports serving as a member of the ASN and European Renal Association Community.

FUNDING

This work was supported by National Natural Scientific Foundation of China grants 82170709 and 81970607 (to L. Chen), and Capital's Funds for Health Improvement and Research grant CFH 2020-2-4018 (to L. Chen).

ACKNOWLEDGMENTS

The funders had no role in study design, data collection, analysis, and manuscript preparation.

AUTHOR CONTRIBUTIONS

CRedit Taxonomy T. Ma was responsible for formal analysis and methodology, and wrote the original draft; T. Ma and L. Zhang were responsible for investigation; L. Zhang and L. Chen were responsible for resources; L. Chen was responsible for project administration, supervision, and validation; and all authors were responsible for conceptualization and reviewed and edited the manuscript.

REFERENCES

- Schlingmann KP, Jouret F, Shen K, Nigam A, Arjona FJ, Dafinger C, et al.: mTOR-activating mutations in *RRAGD* are causative for kidney tubulopathy and cardiomyopathy. *J Am Soc Nephrol* 32: 2885–2899, 2021
- The Human Protein Atlas: The Human Protein Atlas. Available at: www.proteinatlas.org. Accessed November 30, 2021

See related reply, "Authors' Reply: The Subcellular Localization of RRAGD," on pages 1048–1049, and original article, "mTOR-Activating Mutations in RRAGD are Causative for Kidney Tubulopathy and Cardiomyopathy," in Vol. 32, Iss. 11, on pages 2885–2899.

Tiantian Ma, Lei Zhang, and Limeng Chen

Department of Nephrology, State Key Laboratory of Complex Severe and Rare Diseases, Peking Union Medical College Hospital, Chinese Academy of Medical Science and Peking Union Medical College, Beijing, China

JASN 33: 1046–1048, 2022.

doi: <https://doi.org/10.1681/ASN.2022010006>

Author's Reply: The Subcellular Localization of RRAGD

We thank Ma *et al.* for their interest in our recent report, which identified mutations in *RRAGD* as a cause for kidney tubulopathy and dilated cardiomyopathy.¹ In their letter, Ma *et al.* report RagD staining in the nucleus of tubular epithelial cells. As the authors correctly note, the RagD staining in our manuscript is predominantly located in the cytoplasm of epithelial cells in the thick ascending limb of the loop of Henle (TAL) and the distal convoluted tubule (DCT) segments of the kidney.¹ Our findings are in line with mRNA expression data from the mouse and the rat nephron, and human single-cell RNA sequencing data which demonstrate high expression in these segments.^{2–4}

Our manuscript reports immunohistochemistry of mouse kidney tissue because we have good segmental markers against mouse proteins available and the tissue can be better fixated due to perfusions. However, we have also analyzed human kidney cortex samples, which confirm the mouse stainings. In these human kidney sections, RagD expression is observed predominantly in the cytoplasm (Figure 1).

Indeed, the Rag GTPase complex is extensively described as a cytoplasmic nutrient sensor, where it resides at the lysosomal membrane and detects leucine and arginine amino acids.⁵ Upon amino acid binding, the Rag complex recruits mammalian target of rapamycin (mTOR) to the lysosomal membrane and activates the mTOR signaling pathway.⁶

Published online ahead of print. Publication date available at www.jasn.org.

Correspondence: Dr. Jeroen H.F. de Baaij, Department of Physiology, Radboud Institute for Molecular Life Sciences, Radboudumc, P.O. Box 9101, 6500HB, Nijmegen, The Netherlands. Email: jeroen.debaaij@radboudumc.nl

Copyright © 2022 by the American Society of Nephrology

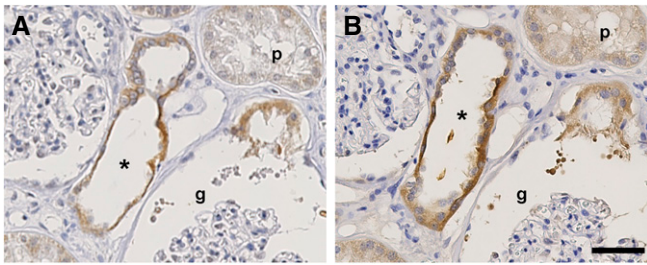


Figure 1. RagD is expressed in the cytoplasm of the distal convoluted tubule. Serial sections (as notified by the asterisk located in the same renal tubule) of human kidney were incubated with primary antibodies against (A) RagD or (B) uromodulin. The RagD protein was detected in uromodulin-positive the thick ascending limb of the loop of Henle (*). No significant signal was observed in the proximal tubule (p) or the glomerulus (g). Scale bar, 50 μm .

Although cytoplasmic localization is, therefore, expected, there are reports of nuclear translocation of Rag proteins *via* the nuclear pore complex.⁷ In HEK293 cells, it has been demonstrated that RagC requires nuclear passage to fully activate mTOR signaling.⁷ Moreover, the metformin analogue phenformin could prevent this nuclear translocation, suggesting intracellular signaling pathways may determine the nuclear versus cytoplasmic expression of Rag proteins. Consequently, differences in subcellular Rag expression may be explained by the metabolic status of the assessed kidney tissue. Therefore, the interesting observation of Ma *et al.* spikes an interest in further investigations of metabolic regulation of the Rag complex in the kidney.

DISCLOSURES

J. De Baaij reports receiving research funding from the Dutch Kidney Foundation and the Dutch Diabetes Research Foundation. F. Jouret reports advisory or leadership role with Belgian Society of Nephrology and French-speaking Society of Transplantation. N. Knoers reports honoraria from ErasmusMC, The Netherlands, for SEP evaluation; advisory or leadership role: research advisory committees with no financial compensation; and other interests or relationships: Chair board ERA-EDTA WGKID, Chair Task force Molecular Diagnostics, European reference network of rare renal diseases, and ERKNET. The remaining author has nothing to disclose.

FUNDING

This work was supported by Nederlandse Organisatie voor Wetenschappelijk Onderzoek grant VENI 016.186.012, Diabetesfonden grant 2017.81.014, and the European Union Seventh Framework Program

EURenOmics project (FP7/2007-2013) grant no. 305608. F. Jouret is a Fonds National de la Recherche Scientifique Luxembourg Fellow in Belgium.

AUTHOR CONTRIBUTIONS

J. de Baaij wrote the original draft; J. de Baaij, F. Jouret, N. Knoers, and K.-P. Schlingmann reviewed and edited the manuscript; and F. Jouret was responsible for investigation.

REFERENCES

- Schlingmann KP, Jouret F, Shen K, Nigam A, Arjona FJ, Dafinger C, et al.: mTOR-activating mutations in *RRAGD* are causative for kidney tubulopathy and cardiomyopathy. *J Am Soc Nephrol* 32: 2885–2899, 2021
- Chen L, Chou CL, Knepper MA: A comprehensive map of mRNAs and their isoforms across all 14 renal tubule segments of mouse. *J Am Soc Nephrol* 32: 897–912, 2021
- Lee JW, Chou CL, Knepper MA: Deep sequencing in microdissected renal tubules identifies nephron segment-specific transcriptomes. *J Am Soc Nephrol* 26: 2669–2677, 2015
- Muto Y, Wilson PC, Ledru N, Wu H, Dimke H, Waikar SS, et al.: Single cell transcriptional and chromatin accessibility profiling redefine cellular heterogeneity in the adult human kidney. *Nat Commun* 12: 2190, 2021
- Sancak Y, Peterson TR, Shaul YD, Lindquist RA, Thoreen CC, Bar-Peled L, et al.: The Rag GTPases bind raptor and mediate amino acid signaling to mTORC1. *Science* 320: 1496–1501, 2008
- Sancak Y, Bar-Peled L, Zoncu R, Markhard AL, Nada S, Sabatini DM: Ragulator-Rag complex targets mTORC1 to the lysosomal surface and is necessary for its activation by amino acids. *Cell* 141: 290–303, 2010
- Wu L, Zhou B, Oshiro-Rapley N, Li M, Paulo JA, Webster CM, et al.: An ancient, unified mechanism for metformin growth inhibition in *C. elegans* and cancer. *Cell* 167: 1705–1718.e13, 2016

See related letter to the editor, “The Subcellular Localization of *RRAGD*,” on pages 1046–1048, and original article, “mTOR-Activating Mutations in *RRAGD* are Causative for Kidney Tubulopathy and Cardiomyopathy,” in Vol. 32, Iss. 11, on pages 2885–2899.

Karl P. Schlingmann ,¹ François Jouret ,^{2,3} Nine V.A.M. Knoers ,⁴ and Jeroen H.F. de Baaij ,⁵

¹Department of General Pediatrics, University Children’s Hospital, Münster, Germany

²Division of Nephrology, Department of Internal Medicine, University of Liège Hospital, Liège, Belgium

³Interdisciplinary Group of Applied Genoproteomics, Cardiovascular Sciences, University of Liège, Liège, Belgium

⁴Department of Genetics, University Medical Center Groningen, University of Groningen, Groningen, The Netherlands

⁵Department of Physiology, Radboud Institute for Molecular Life Sciences, Radboud University Medical Center, Nijmegen, The Netherlands

JASN 33: 1048–1049, 2022.

doi: <https://doi.org/10.1681/ASN.2022030252>