

University of Groningen

Boundaries as opportunities: A multilevel investigation of resilience

van den Adel, Mitchell

DOI:
[10.33612/diss.203014243](https://doi.org/10.33612/diss.203014243)

IMPORTANT NOTE: You are advised to consult the publisher's version (publisher's PDF) if you wish to cite from it. Please check the document version below.

Document Version
Publisher's PDF, also known as Version of record

Publication date:
2022

[Link to publication in University of Groningen/UMCG research database](#)

Citation for published version (APA):

van den Adel, M. (2022). *Boundaries as opportunities: A multilevel investigation of resilience*. [Thesis fully internal (DIV), University of Groningen]. University of Groningen, SOM research school.
<https://doi.org/10.33612/diss.203014243>

Copyright

Other than for strictly personal use, it is not permitted to download or to forward/distribute the text or part of it without the consent of the author(s) and/or copyright holder(s), unless the work is under an open content license (like Creative Commons).

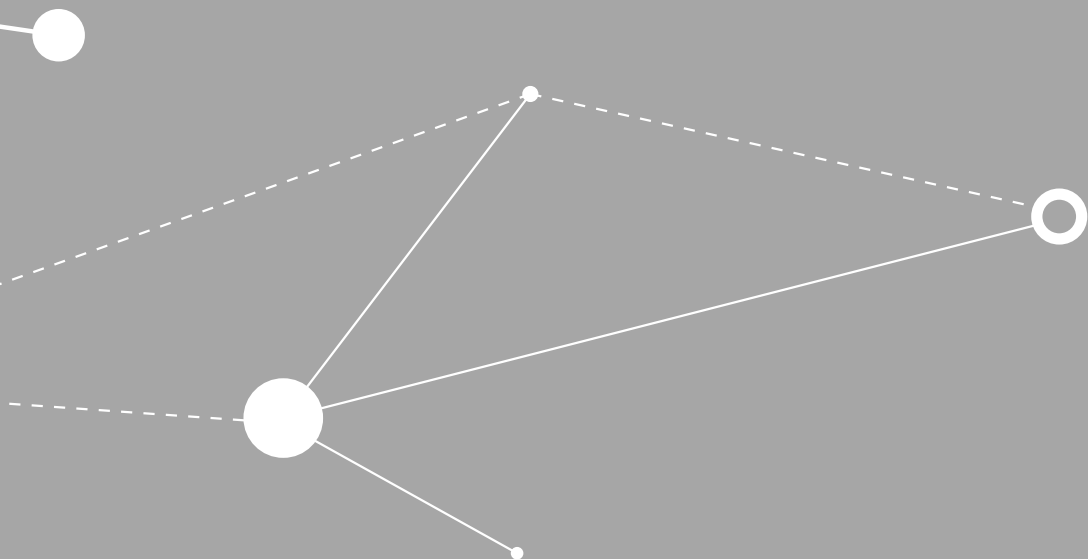
The publication may also be distributed here under the terms of Article 25fa of the Dutch Copyright Act, indicated by the "Taverne" license. More information can be found on the University of Groningen website: <https://www.rug.nl/library/open-access/self-archiving-pure/taverne-amendment>.

Take-down policy

If you believe that this document breaches copyright please contact us providing details, and we will remove access to the work immediately and investigate your claim.

Downloaded from the University of Groningen/UMCG research database (Pure): <http://www.rug.nl/research/portal>. For technical reasons the number of authors shown on this cover page is limited to 10 maximum.

BIBLIOGRAPHY



A

- Aguinis, H., Gottfredson, R.K., & Culpepper, S.A. (2013). Best-practice recommendations for estimating cross-level interaction effects using multilevel modeling. *Journal of Management*, 39(6), 1490–1528.
- Aitken, J.M. (1998). *Supply Chain Integration within the Context of a Supplier Association: Case Studies of Four Supplier Associations*, Ph.D. thesis, Cranfield University.
- Akkermans, H., & van Wassenhove, L.N. (2018). Supply chain tsunamis: Research on low-probability, high-impact disruptions. *Journal of Supply Chain Management*, 54(1), 64–76.
- Akkermans, H.A., & van Wassenhove, L.N. (2013). Searching for the grey swans: The next 50 years of production research. *International Journal of Production Research*, 51(23–24), 6746–6755.
- Ali, A., Mahfouz, A., & Arisha, A. (2017). Analysing supply chain resilience: Integrating the constructs in a concept mapping framework via a systematic literature review. *Supply Chain Management: An International Journal*, 22(1), 16–39.
- Ali, I., & Gölgeci, I. (2021). Managing climate risks through social capital in agrifood supply chains. *Supply Chain Management: An International Journal*, 26(1), 1–16.
- Altay, N., & Pal, R. (2014). Information diffusion among agents: Implications for humanitarian operations. *Production and Operations Management*, 23(6), 1015–1027.
- Alves, M.W.F.M., de Sousa Jabbour, A.B.L., Kannan, D., & Jabbour, C.J.C. (2017). Contingency theory, climate change, and low-carbon operations management. *Supply Chain Management: An International Journal*, 22(3), 223–236.
- Ambulkar, S., Blackhurst, J., & Grawe, S. (2015). Firm's resilience to supply chain disruptions: Scale development and empirical examination. *Journal of Operations Management*, 33–34, 111–122.
- Ancona, D.G., & Caldwell, D.F. (1988). Beyond task and maintenance: Defining external functions in groups. *Group and Organization Studies*, 13(4), 468–494.
- Ancona, D.G., & Caldwell, D.F. (1992). Bridging the boundary: External activity and performance in organizational teams. *Administrative Science Quarterly*, 37(4), 634–665.

- Andersen, R., & Heijkants, B. (2021). De duurste file op aarde: blokkade Suezkanaal kan weken duren en miljarden kosten. *De Volkskrant*, March 25.
- Antonsen, S., Almklov, P.G., Fenstad, J., & Nybø, A. (2010). Reliability consequences of liberalization in the electricity sector: Existing research and remaining questions. *Journal of Contingencies and Crisis Management*, 18(4), 208–219.
- Azadegan, A., & Dooley, K.J. (2021). A typology of supply network resilience strategies: Complex collaborations in a complex world. *Journal of Supply Chain Management*, 57(1), 17–26.
- Azadegan, A., Parast, M.M., Lucianetti, L., Nishant, R., & Blackhurst, J. (2020). Supply chain disruptions and business continuity: An empirical assessment. *Decision Sciences*, 51(1), 38–73.

B

- Bakshi, N., & Kleindorfer, P. (2009). Co-opetition and investment for supply-chain resilience. *Production and Operations Management*, 18(6), 583–603.
- Ballinger, G.A. (2004). Using generalized estimating equations for longitudinal data analysis. *Organizational Research Methods*, 7(2), 127–150.
- Baum, J.A.C., & Ingram, P. (1998). Survival-enhancing learning in the Manhattan hotel industry, 1898–1980. *Management Science*, 44(7), 996–1016.
- Beal, D.J., Cohen, R.R., Burke, M.J., & McLendon, C.L. (2003). Cohesion and performance in groups: A meta-analytic clarification of construct relations. *Journal of Applied Psychology*, 88(6), 989–1004.
- Benjamin, J. (2021). Nog nooit konden reders zo veel vragen voor transport vanuit Azië naar Europa. *Nrc*, September 3.
- Bensaou, M., & Venkatraman, N. (1995). Configurations of interorganizational relationships: A comparison between U.S. and Japanese automakers. *Management Science*, 41(9), 1471–1492.
- Berthod, O., Grothe-Hammer, M., Müller-Seitz, G., Raab, J., & Sydow, J. (2017). From high-reliability organizations to high-reliability networks: The dynamics of network governance in the face of emergency. *Journal of Public Administration Research and Theory*, 27(2), 352–371.
- Bigley, G.A., & Roberts, K.H. (2001). The incident command system: High-reliability organizing for complex and volatile task environments. *Academy of Management Journal*, 44(6), 1281–1299.

- Blackhurst, J., Dunn, K.S., & Craighead, C.W. (2011). An empirically derived framework of global supply resiliency. *Journal of Business Logistics*, 32(4), 374–391.
- Blau, P.M. (1977). *Inequality and heterogeneity: A primitive theory of social structure*. Free Press.
- Bliese, P.D. (2000). Within group agreement, non-independence and reliability: Implications for data and analysis. In K. J. Klein & S. W. J. Kozlowski (Eds.), *Multilevel theory, research, and methods in organizations: Foundations, extensions, and new directions* (pp. 349–381). Jossey-Bass.
- Bode, C., & Macdonald, J.R. (2017). Stages of supply chain disruption response: Direct, constraining, and mediating factors for impact mitigation. *Decision Sciences*, 48(5), 836–874.
- Bode, C., & Wagner, S.M. (2015). Structural drivers of upstream supply chain complexity and the frequency of supply chain disruptions. *Journal of Operations Management*, 36, 215–228.
- Bode, C., Wagner, S.M., Petersen, K.J., & Ellram, L.M. (2011). Understanding responses to supply chain disruptions: Insights from information processing and resource dependence perspectives. *Academy of Management Journal*, 54(4), 833–856.
- Boin, A., & Lodge, M. (2016). Designing resilient institutions for transboundary crisis management: A time for public administration. *Public Administration*, 94(2), 289–298.
- Boin, A., & McConnell, A. (2007). Preparing for critical infrastructure breakdowns: The limits of crisis management and the need for resilience. *Journal of Contingencies and Crisis Management*, 15(1), 50–59.
- Boin, A., & van Eeten, M.J.G. (2013). The resilient organization: A critical appraisal. *Public Management Review*, 15(3), 429–445.
- Bolton, G.E., Ockenfels, A., & Thonemann, U.W. (2012). Managers and students as newsvendors. *Management Science*, 58(12), 2225–2233.
- Boyer, K.K., & Swink, M.L. (2008). Empirical elephants - Why multiple methods are essential to quality research in operations and supply chain management. *Journal of Operations Management*, 26(3), 337–348.
- Brandon-Jones, E., Squire, B., Autry, C.W., & Petersen, K.J. (2014). A contingent resource-based perspective of supply chain resilience and robustness. *Journal of Supply Chain Management*, 50(3), 55–73.

- Brandon-Jones, E., Squire, B., & van Rossenberg, Y.G.T. (2015). The impact of supply base complexity on disruptions and performance: The moderating effects of slack and visibility. *International Journal of Production Research*, 53(22), 6903–6918.
- Brazhkin, V., & Zimmerman, H. (2019). Students' perceptions of learning in an online multiround business simulation game: What can we learn from them? *Decision Sciences Journal of Innovative Education*, 17(4), 363–386.
- Braziotis, C., Bourlakis, M., Rogers, H., & Tannock, J. (2013). Supply chains and supply networks: Distinctions and overlaps. *Supply Chain Management: An International Journal*, 18(6), 644–652.
- Britt, D.W. (1988). Analyzing the shape of organizational adaptability in response to environmental jolts. *Clinical Sociology Review*, 6(1), 59–75.
- Buijs, P., & Wortmann, J.C. (2014). Joint operational decision-making in collaborative transportation networks: The role of IT. *Supply Chain Management: An International Journal*, 19(2), 200–210.
- Bunderson, J.S. (2003). Team member functional background and involvement in management teams: Direct effects and the moderating role of power centralization. *Academy of Management Journal*, 46(4), 458–474.
- Bunderson, J.S., & Sutcliffe, K.M. (2002). Comparing alternative conceptualizations of functional diversity in management teams: Process and performance effects. *Academy of Management Journal*, 45(5), 875–893.
- Bursztynsky, J. (2020). *Coronavirus fallout: At least 150 companies have warned of earnings hit*. CNBC. <https://www.cnbc.com/2020/03/11/coronavirus-at-least-150-companies-have-warned-investors.html>, date accessed: July 8, 2021.
- Busse, C., Meinschmidt, J., & Foerstl, K. (2017). Managing information processing needs in global supply chains: A prerequisite to sustainable supply chain management. *Journal of Supply Chain Management*, 53(1), 87–113.

C

- Cai, S., Jun, M., & Yang, Z. (2017). The effects of boundary spanners' personal relationships on interfirm collaboration and conflict: A study of the role of guanxi in China. *Journal of Supply Chain Management*, 53(3), 19–40.
- Cantor, D.E., Blackhurst, J., & Cortes, J.D. (2014). The clock is ticking: The role of uncertainty, regulatory focus, and level of risk on supply chain disruption decision making behavior. *Transportation Research Part E: Logistics and Transportation Review*, 72, 159–172.

- Carbonell, P., & Rodríguez Escudero, A.I. (2019). The dark side of team social cohesion in NPD team boundary spanning. *Journal of Product Innovation Management*, 36(2), 149–171.
- Carey, S., Lawson, B., & Krause, D.R. (2011). Social capital configuration, legal bonds and performance in buyer-supplier relationships. *Journal of Operations Management*, 29(4), 277–288.
- Carter, C.R., Rogers, D.S., & Choi, T.Y. (2015). Toward the theory of the supply chain. *Journal of Supply Chain Management*, 51(2), 89–97.
- Carter, D.R., Cullen-Lester, K.L., Jones, J.M., Gerbasi, A., Chrobot-Mason, D., & Nae, E.Y. (2020). Functional leadership in interteam contexts: Understanding ‘what’ in the context of why? where? when? and who? *Leadership Quarterly*, 31(1), 101378.
- Chakkol, M., Finne, M., Raja, J.Z., & Johnson, M. (2018). Social capital is not for sale: A supply network perspective on mergers and acquisitions. *Supply Chain Management: An International Journal*, 23(5), 377–395.
- Chandrasekaran, A., Linderman, K., & Sting, F.J. (2018). Avoiding epistemological silos and empirical elephants in OM: How to combine empirical and simulation methods? *Journal of Operations Management*, 63, 1–5.
- Chapa, S. (2021). *What’s backed up at the Suez Canal? Live animals, oil and food*. Bloomberg. <https://www.bloomberg.com/news/articles/2021-03-24/livestock-oil-crops-are-on-ships-waiting-in-suez-canal-queue>, date accessed: July 8, 2021.
- Chen, J., Neubaum, D.O., Reilly, R.R., & Lynn, G.S. (2014). The relationship between team autonomy and new product development performance under different levels of technological turbulence. *Journal of Operations Management*, 33–34, 83–96.
- Chen, K., Li, Y., & Linderman, K. (2021). Supply network resilience learning: An exploratory data analytics study. *Decision Sciences*, 1–20.
- Chen, M., Liu, H., Wei, S., & Gu, J. (2018). Top managers’ managerial ties, supply chain integration, and firm performance in China: A social capital perspective. *Industrial Marketing Management*, 74, 205–214.
- Cheng, L., Craighead, C.W., Crook, T.R., & Eckerdt, S. (2020). Leaving it on the table? An examination of unrealized bargaining power in multimarket buyer–supplier exchanges. *Journal of Operations Management*, 382–406.
- Choi, T.Y., & Dooley, K.J. (2009). Supply networks: Theories and models. *Journal of Supply Chain Management*, 45(3), 25–26.

- Choi, T.Y., Dooley, K.J., & Rungtusanatham, M. (2001). Supply networks and complex adaptive systems: Control versus emergence. *Journal of Operations Management*, 19(3), 351–366.
- Choi, T.Y., Rogers, D.S., & Vakil, B. (2020). Coronavirus is a wake-up call for supply chain management. *Harvard Business Review*, March 27.
- Chowdhury, M.H., & Quaddus, M. (2016). Supply chain readiness, response and recovery for resilience. *Supply Chain Management: An International Journal*, 21(6), 709–731.
- Chowdhury, P., Lau, K.H., & Pittayachawan, S. (2019). Operational supply risk mitigation of SME and its impact on operational performance: A social capital perspective. *International Journal of Operations & Production Management*, 39(4), 478–502.
- Christianson, M.K., Farkas, M.T., Sutcliffe, K.M., & Weick, K.E. (2008). Learning through rare events: Significant interruptions at the Baltimore & Ohio Railroad Museum. *Organization Science*, 20(5), 846–860.
- Christopher, M., & Lee, H. (2004). Mitigating supply chain risk through improved confidence. *International Journal of Physical Distribution & Logistics Management*, 34(5), 386–396.
- Cigler, B.A. (2007). The “big questions” of Katrina and the 2005 great flood of New Orleans. *Public Administration Review*, 67(Suppl. 1), 64–76.
- Cohen, J., Cohen, P., West, S.G., & Aiken, L.S. (2014). *Applied Multiple Regression/Correlation Analysis for the Behavioral Sciences* (2nd ed.). Psychology Press.
- Comfort, L.K., Waugh, W.L., & Cigler, B.A. (2012). Emergency management research and practice in public administration: Emergence, evolution, expansion, and future directions. *Public Administration Review*, 72(4), 539–548.
- Cooke, D.L., & Rohleder, T.R. (2006). Learning from incidents: From normal accidents to high reliability. *System Dynamics Review*, 22, 213–239.
- Corder, J.K. (2009). The Federal Reserve System and the credit crisis. *Public Administration Review*, 69(4), 623–631.
- Craighead, C.W., Blackhurst, J., Rungtusanatham, M.J., & Handfield, R.B. (2007). The severity of supply chain disruptions: Design characteristics and mitigation capabilities. *Decision Sciences*, 38(1), 131–156.
- Craighead, C.W., Ketchen, D.J., & Darby, J.L. (2020). Pandemics and supply chain management research: Toward a theoretical toolbox. *Decision Sciences*, 51(4), 838–866.

- Crawford, E.R., & LePine, J.A. (2013). A configural theory of team processes: Accounting for the structure of taskwork and teamwork. *Academy of Management Review*, 38(1), 32–48.
- Crawford, W.S., Thompson, M.J., & Ashforth, B.E. (2019). Work-life events theory: Making sense of shock events in dual-earner couples. *Academy of Management Review*, 44(1), 194–212.
- Cuervo-Cazurra, A., Andersson, U., Brannen, M.Y., Nielsen, B.B., & Reuber, A.R. (2016). From the editors: Can I trust your findings? Ruling out alternative explanations in international business research. *Journal of International Business Studies*, 47(8), 881–897.
- Cui, J. (2007). QIC program and model selection in GEE analyses. *Stata Journal*, 7(2), 209–220.
- D**
- da Silva Poberschnigg, T.F., Pimenta, M.L., & Hilletoft, P. (2020). How can cross-functional integration support the development of resilience capabilities? The case of collaboration in the automotive industry. *Supply Chain Management: An International Journal*, 25(6), 789–801.
- Daft, R.L., & Weick, K.E. (1984). Toward a model of organizations as interpretation systems. *Academy of Management Review*, 9(2), 284–295.
- Daghar, A., Alinaghian, L., & Turner, N. (2021). The role of collaborative interorganizational relationships in supply chain risks: A systematic review using a social capital perspective. *Supply Chain Management: An International Journal*, 26(2), 279–296.
- Dantuma, E. (2021). *Industrie herstellt in 2021*. ING Groep N.V., Amsterdam.
- Davis, Z., Zobel, C.W., Khansa, L., & Glick, R.E. (2020). Emergency department resilience to disaster-level overcrowding: A component resilience framework for analysis and predictive modeling. *Journal of Operations Management*, 66(1–2), 54–66.
- Davison, R.B., Hollenbeck, J.R., Barnes, C.M., Slesman, D.J., & Ilgen, D.R. (2012). Coordinated action in multiteam systems. *Journal of Applied Psychology*, 97(4), 808–824.
- de Bruijne, M., & van Eeten, M. (2007). Systems that should have failed: Critical infrastructure protection in an institutionally fragmented environment. *Journal of Contingencies and Crisis Management*, 15(1), 18–29.

- de Leeuw, S.L.J.M., Schippers, M., & Hoogervorst, S. (2015). The Fresh Connection: Inter-functional integration in supply chain management. In E. Bendoly, W. Van Wezel, & D. G. Bachrach (Eds.), *Handbook of Behavioral Operations Management: Social and Psychological Dynamics in Production and Service Settings* (pp. 359–377). Oxford University Press.
- de Vries, T.A., Hollenbeck, J.R., Davidson, R.B., Walter, F., & van der Vegt, G.S. (2016). Managing coordination in multiteam systems: Integrating micro and macro perspectives. *Academy of Management Journal*, 59(5), 1823–1844.
- de Vries, T.A., van der Vegt, G.S., Scholten, K., & van Donk, D.P. (2021). Heeding supply chain disruption warnings: When and how do cross-functional teams ensure firm robustness? *Journal of Supply Chain Management*, ahead-of-print.
- de Vries, T.A., Walter, F., van der Vegt, G.S., & Essens, P.J.M.D. (2014). Antecedents of individuals' interteam coordination: Broad functional experiences as a mixed blessing. *Academy of Management Journal*, 57(5), 1334–1359.
- Demirel, G., Maccarthy, B.L., Ritterskamp, D., Champneys, A.R., & Gross, T. (2019). Identifying dynamical instabilities in supply networks using generalized modeling. *Journal of Operations Management*, 65(2), 136–159.
- Donadoni, M., Roden, S., Scholten, K., Stevenson, M., Caniato, F., van Donk, D.P., & Wieland, A. (2019). The future of resilient supply chains. In G. A. Zsidisin & M. Henke (Eds.), *Revisiting Supply Chain Risk* (pp. 169–188). Springer International Publishing.
- Donahue, A.K., & Tuohy, R. V. (2006). Lessons we don't learn: A study of the lessons of disasters, why we repeat them, and how we can learn them. *Homeland Security Affairs*, 2(2), 1–28.
- Durach, C., Felix Wiengarten, F., & Choi, T.Y. (2020). Supplier-supplier relationships and supply chain disruption: First-tier supplier resilience in the tetradic context. *International Journal of Operations & Production Management*, 40(7–8), 1041–1065.

E

- Eckerd, A., & Girth, A.M. (2017). Designing the buyer–supplier contract for risk management: Assessing complexity and mission criticality. *Journal of Supply Chain Management*, 53(3), 60–75.
- Eckerd, S., DuHadway, S., Bendoly, E., Carter, C., & Kaufmann, L. (2021). On making experimental design choices: Discussions on the use and challenges of demand effects, incentives, deception, samples, and vignettes. *Journal of Operations Management*, 67, 261–275.

- Egan, M.J. (2007). Anticipating future vulnerability: Defining characteristics of increasingly critical infrastructure-like systems. *Journal of Contingencies and Crisis Management*, 15(1), 4–17.
- El-Fekki, A. (2021). *Ever Given container ship that blocked Suez Canal sets sail after owner pays compensation*. Wall Street Journal. <https://www.wsj.com/articles/ever-given-container-ship-that-blocked-suez-canal-is-set-to-sail-11625641021>, date accessed: July 9, 2021.
- Elfenbein, D.W., & Zenger, T.R. (2014). What is a relationship worth? Repeated exchange and the development and deployment of relational capital. *Organization Science*, 25(1), 222–244.
- Elliott, R. (2021). *Supply chain resilience report 2021*, Zurich, Business Continuity Institute.
- Elliott, R., Thomas, C., & Muhammad, K. (2019). *Supply chain resilience report 2019*, Zurich, Business Continuity Institute.
- Ellis, A.P.J. (2006). System breakdown: The role of mental models and transactive memory in the relationship between acute stress and team performance. *Academy of Management Journal*, 49(3), 576–589.
- F**
- Fahimnia, B., Pournader, M., Siemsen, E., Bendoly, E., & Wang, C. (2019). Behavioral operations and supply chain management—A review and literature mapping. *Decision Sciences*, 50(6), 1127–1183.
- Fan, Y., & Stevenson, M. (2018). Reading on and between the lines: Risk identification in collaborative and adversarial buyer–supplier relationships. *Supply Chain Management: An International Journal*, 23(4), 351–376.
- Fan, Y., & Stevenson, M. (2019). Non-linear effects of relational capital on supply-side resilience spanners’ personal ties. *International Journal of Operations & Production Management*, 39(9/10), 1053–1075.
- Fiksel, J., Polyviou, M., Croxton, K.L., & Pettit, T.J. (2015). From risk to resilience: Learning to deal with disruption. *MIT Sloan Management Review*, 56(2), 79–86.
- Firth, B.M., Hollenbeck, J.R., Miles, J.E., Ilgen, D.R., & Barnes, C.M. (2015). Same page, different books: Extending representational gaps theory to enhance performance in Multiteam systems. *Academy of Management Journal*, 58(3), 813–835.
- Flynn, B.B., Huo, B., & Zhao, X. (2010). The impact of supply chain integration on performance: A contingency and configuration approach. *Journal of Operations Management*, 28(1), 58–71.

- Flynn, B.B., Koufteros, X., & Lu, G. (2016). On theory in supply chain uncertainty and its implications for supply chain integration. *Journal of Supply Chain Management*, 52(3), 3–27.
- Flynn, B.B., Pagell, M., & Fugate, B. (2018). Editorial: Survey research design in Supply Chain Management: The need for evolution in our expectations. *Journal of Supply Chain Management*, 54(1), 1–15.
- Fugate, B., Pagell, M., & Flynn, B.B. (2019). From the editors: Introduction to the emerging discourse incubator on the topic of research at the intersection of supply chain management and public policy and government regulation. *Journal of Supply Chain Management*, 55(2), 3–5.
- Fugate, B.S., Thomas, R.W., & Golicic, S.L. (2012). The impact of coping with time pressure on boundary spanner collaborative behaviors. *International Journal of Physical Distribution & Logistics Management*, 42(7), 697–715.

G

- Galbraith, J.R. (1974). Organization design: An information processing view. *Interfaces*, 4(3), 28–36.
- Galbraith, J.R. (1977). *Organization design*. Addison-Wesley.
- Ghadge, A., Weiß, M., Caldwell, N.D., & Wilding, R. (2019). Managing cyber risk in supply chains: A review and research agenda. *Supply Chain Management: An International Journal*, 25(2), 223–240.
- Gibson, C.B., & Dibble, R. (2013). Excess may do harm: Investigating the effect of team external environment on external activities in teams. *Organization Science*, 24(3), 697–715.
- Gibson, C.B., Dunlop, P.D., & Cordery, J.L. (2019). Managing formalization to increase global team effectiveness and meaningfulness of work in multinational organizations. *Journal of International Business Studies*, 50(6), 1021–1052.
- Gölgeci, I., & Kuivalainen, O. (2020). Does social capital matter for supply chain resilience? The role of absorptive capacity and marketing-supply chain management alignment. *Industrial Marketing Management*, 84, 63–74.
- Granovetter, M. (1992). Economic institutions as social constructions: A framework for analysis. *Acta Sociologica*, 35(1), 3–11.
- Gremyr, I., & Halldorsson, A. (2021). Guest editorial - Advancing service supply chains: Conceptualisation and research directions. *Supply Chain Management: An International Journal*, 26(3), 297–306.

H

- Habermann, M., Blackhurst, J., & Metcalfe, A.Y. (2015). Keep your friends close? Supply chain design and disruption risk. *Decision Sciences*, 46(3), 491–526.
- Hair, J.F., Black, W.C., Babin, B.J., & Anderson, R.E. (2013). *Multivariate data analysis* (7th ed.). Prentice-Hall.
- Hansen, M.T. (1999). The search-transfer problem: The role of weak ties in sharing knowledge across organization subunits. *Administrative Science Quarterly*, 44(1), 82–111.
- Hardin, J.W., & Hilbe, J.M. (2012). *Generalized Estimating Equations* (2nd ed.). Chapman & Hall/CRC.
- Harland, C. (2021). Discontinuous wefts: Weaving a more interconnected supply chain management tapestry. *Journal of Supply Chain Management*, 57(1), 27–40.
- Hartmann, E., & Herb, S. (2015). Interconnectedness of actor bonds in service triads - a social capital perspective. *Industrial Marketing Management*, 44, 154–165.
- Haunschild, P.R., & Rhee, M. (2004). The role of volition in organizational learning: The case of automotive product recalls. *Management Science*, 50(11), 1545–1560.
- Haunschild, P.R., & Sullivan, B.N. (2002). Learning from complexity: Effects of prior accidents and incidents on airlines' learning. *Administrative Science Quarterly*, 47(4), 609–643.
- Heckmann, I., Comes, T., & Nickel, S. (2015). A critical review on supply chain risk - Definition, measure and modeling. *Omega*, 52, 119–132.
- Helmuth, C.A., Craighead, C.W., Connelly, B.L., Collier, D.Y., & Hanna, J.B. (2015). Supply chain management research: Key elements of study design and statistical testing. *Journal of Operations Management*, 36, 178–186.
- Hinsz, V.B., Vollrath, D.A., & Tindale, R.S. (1997). The emerging conceptualization of groups as information processors. *Psychological Bulletin*, 121(1), 43–64.
- Hofmann, D.A., & Gavin, M.B. (1998). Centering decisions in hierarchical linear models: Implications for research in organizations. *Journal of Management*, 24(5), 623–641.
- Hohenstein, N.-O., Feisel, E., Hartmann, E., & Giunipero, L. (2015). Research on the phenomenon of supply chain resilience: A systematic review and paths for further investigation. *International Journal of Physical Distribution & Logistics Management*, 45(1–2), 90–117.

- Holloway, S.S., & Parmigiani, A. (2016). Friends and profits don't mix: The performance implications of repeated partnerships. *Academy of Management Journal*, 59(2), 460–478.
- Huang, Y., Han, W., & Macbeth, D.K. (2020). The complexity of collaboration in supply chain networks. *Supply Chain Management: An International Journal*, 25(3), 393–410.
- Hult, G.T.M., Ketchen, D.J., & Slater, S.F. (2004). Information processing, knowledge development, and strategic supply chain performance. *Academy of Management Journal*, 47(2), 241–253.
- Humphrey, S.E., & Aime, F. (2014). Team microdynamics: Toward an organizing approach to teamwork. *Academy of Management Annals*, 8(1), 443–503.
- Huq, F.A., Chowdhury, I.N., & Klassen, R.D. (2016). Social management capabilities of multinational buying firms and their emerging market suppliers: An exploratory study of the clothing industry. *Journal of Operations Management*, 46, 19–37.
- I
- Inkpen, A.C., & Tsang, E. (2005). Social capital, networks, and knowledge transfer. *Academy of Management Review*, 30(1), 146–165.
- Ivanov, D., Blackhurst, J., & Das, A. (2021). Guest editorial. *International Journal of Physical Distribution & Logistics Management*, 51(2), 97–103.
- Ivanov, D., & Dolgui, A. (2020). Viability of intertwined supply networks: extending the supply chain resilience angles towards survivability. A position paper motivated by COVID-19 outbreak. *International Journal of Production Research*, 58(10), 2904–2915.
- J
- Johnson, N., Elliott, D., & Drake, P. (2013). Exploring the role of social capital in facilitating supply chain resilience. *Supply Chain Management: An International Journal*, 18(3), 324–336.
- Joshi, A., Pandey, N., & Han, G. (2009). Bracketing team boundary spanning: An examination of task-based, team-level, and contextual antecedents. *Journal of Organizational Behavior*, 30(6), 731–759.
- Jüttner, U., & Maklan, S. (2011). Supply chain resilience in the global financial crisis: An empirical study. *Supply Chain Management: An International Journal*, 16(4), 246–259.

K

- Kalaitzi, D., Matopoulos, A., Bourlakis, M., & Tate, W. (2019). Supply chains under resource pressure: Strategies for improving resource efficiency and competitive advantage. *International Journal of Operations & Production Management*, 39(12), 1323–1354.
- Ketokivi, M., & McIntosh, C.N. (2017). Addressing the endogeneity dilemma in operations management research: Theoretical, empirical, and pragmatic considerations. *Journal of Operations Management*, 52, 1–14.
- Kilpatrick, J., & Barter, L. (2020). *COVID-19: Managing supply chain risk and disruption*, Toronto (Canada), Deloitte.
- Kim, Y., Chen, Y.S., & Linderman, K. (2015). Supply network disruption and resilience: A network structural perspective. *Journal of Operations Management*, 33–34, 43–59.
- Kim, Y., & Choi, T.Y. (2015). Deep, sticky, transient, and gracious: An expanded buyer-supplier relationship typology. *Journal of Supply Chain Management*, 51(3), 61–86.
- Kim, Y., Choi, T.Y., Yan, T., & Dooley, K.J. (2011). Structural investigation of supply networks: A social network analysis approach. *Journal of Operations Management*, 29(3), 194–211.
- Kim, Y.H., & Schoenherr, T. (2018). The effects of supply chain integration on the cost efficiency of contract manufacturing. *Journal of Supply Chain Management*, 54(3), 42–64.
- King, I., Wu, D., & Pogkas, D. (2021). *How a chip shortage snarled everything from phones to cars*. Bloomberg. <https://www.bloomberg.com/graphics/2021-semiconductors-chips-shortage/>, date accessed: July 12, 2021.
- Klein, K.J., & Kozlowski, S.W.J. (2000). From micro to meso: Critical steps in conceptualizing and conducting multilevel research. *Organizational Research Methods*, 3(3), 211–236.
- Krause, D.R., Handfield, R.B., & Tyler, B.B. (2007). The relationships between supplier development, commitment, social capital accumulation and performance improvement. *Journal of Operations Management*, 25(2), 528–545.
- Kuipers, B., & van Dijk, M. (2021). Suezblokkade is symptoom van grotere containercrisis. *Nrc*, March 25.

Kunz, N., Van Wassenhove, L.N., Besiou, M., Hambye, C., & Kovács, G. (2017). Relevance of humanitarian logistics research: best practices and way forward. *International Journal of Operations & Production Management*, 37(11), 1585–1599.

L

Langlely, A., Smallman, C., Tsoukas, H., & Van De Ven, A.H. (2013). Process studies of change in organization and management: Unveiling temporality, activity, and flow. *Academy of Management Journal*, 56(1), 1–13.

Lawson, B., Tyler, B.B., & Cousins, P.D. (2008). Antecedents and consequences of social capital on buyer performance improvement. *Journal of Operations Management*, 26(3), 446–460.

Levin, D.Z., & Cross, R. (2004). The strength of weak ties you can trust: The mediating role of trust in effective knowledge transfer. *Management Science*, 50(11), 1477–1490.

Levine, S.S., Bernard, M., & Nagel, R. (2017). Strategic intelligence: The cognitive capability to anticipate competitor behavior. *Strategic Management Journal*, 38(12), 2390–2423.

Lewis, K. (2003). Measuring transactive memory systems in the field: Scale development and validation. *Journal of Applied Psychology*, 88(4), 587–604.

Linnenluecke, M.K. (2017). Resilience in business and management research: A review of influential publications and a research agenda. *International Journal of Management Reviews*, 19(1), 4–30.

Lu, G., Ding, X., Peng, D.X., & Chuang, H.H.-C. (2018). Addressing endogeneity in operations management research: Recent developments, common problems, and directions for future research. *Journal of Operations Management*, 64, 53–64.

Lu, G., & Shang, G. (2017). Impact of supply base structural complexity on financial performance: Roles of visible and not-so-visible characteristics. *Journal of Operations Management*, 53–56, 23–44.

Lu, J., Kaufmann, L., & Carter, C.R. (2021). How informal exchanges impact formal sourcing collaboration (and what supply managers can do about it). *Journal of Supply Chain Management*, ahead-of-print.

Luke, D.A. (2015). *A user's guide to network analysis in R*. Springer International Publishing.

M

- Majchrzak, A., More, P.H.B., & Faraj, S. (2012). Transcending knowledge differences in cross-functional teams. *Organization Science*, 23(4), 951–970.
- Manhart, P., Summers, J.K., & Blackhurst, J. (2020). A meta-analytic review of supply chain risk management: Assessing buffering and bridging strategies and firm performance. *Journal of Supply Chain Management*, 56(6), 66–87.
- Marrone, J.A. (2010). Team boundary spanning: A multilevel review of past research and proposals for the future. *Journal of Management*, 36(4), 911–940.
- Marrone, J.A., Tesluk, P.E., & Carson, J.B. (2007). A multilevel investigation of antecedents and consequences of team member boundary-spanning behavior. *Academy of Management Journal*, 50(6), 1423–1439.
- Martins de Sá, M., de Souza Miguel, P.L., de Brito, R.P., & Pereira, S.C.F. (2020). Supply chain resilience: The whole is not the sum of the parts. *International Journal of Operations & Production Management*, 40(1), 92–115.
- Mathieu, J.E., Hollenbeck, J.R., van Knippenberg, D., & Ilgen, D.R. (2017). A century of work teams in the journal of applied psychology. *Journal of Applied Psychology*, 102(3), 452–467.
- Mattsson, L.G., & Jenelius, E. (2015). Vulnerability and resilience of transport systems - A discussion of recent research. *Transportation Research Part A: Policy and Practice*, 81, 16–34.
- McDaniels, T., Chang, S., Cole, D., Mikawoz, J., & Longstaff, H. (2008). Fostering resilience to extreme events within infrastructure systems: Characterizing decision contexts for mitigation and adaptation. *Global Environmental Change*, 18(2), 310–318.
- McNair, D., Williamson, E., Loekman, S., & Bell, G. (2020). *COVID-19 and the Solar Industry*, Sydney (Australia), PwC.
- Melnyk, S.A., Rodrigues, A., & Ragatz, G.L. (2009). Using simulation to investigate supply chain disruptions. In G. A. Zsidisin & B. Ritchie (Eds.), *Supply chain risk: A handbook of assessment, management, and performance* (pp. 103–122). Springer.
- Mena, C., Melnyk, S.A., Baghersad, M., & Zobel, C.W. (2020). Sourcing decisions under conditions of risk and resilience: A behavioral study. *Decision Sciences*, 51(4), 985–1014.
- Mesmer-Magnus, J.R., & DeChurch, L.A. (2009). Information sharing and team performance: A meta-analysis. *Journal of Applied Psychology*, 94(2), 535–546.

- Michaelson, R. (2021). *From bamboo to barbecues: the cargo caught up in Ever Given legal battle*. The Guardian. <https://www.theguardian.com/environment/2021/jun/11/ever-given-remains-grounded-in-egypt-as-compensation-battle-rages>, date accessed: July 8, 2021.
- Miemczyk, J., Johnsen, T.E., & Macquet, M. (2012). Sustainable purchasing and supply management: A structured literature review of definitions and measures at the dyad, chain and network levels. *Supply Chain Management: An International Journal*, 17(5), 478–496.
- Miller, J., Davis-Sramek, B., Fugate, B.S., Pagell, M., & Flynn, B.B. (2021). Editorial commentary: Addressing confusion in the diffusion of archival data research. *Journal of Supply Chain Management*, 57(3), 130–146.
- Mishra, A., Chandrasekaran, A., & McCormack, A. (2015). Collaboration in multi-partner R&D projects: The impact of partnering scale and scope. *Journal of Operations Management*, 33–34, 1–14.
- Mishra, D., Sharma, R.R.K., Kumar, S., & Dubey, R. (2016). Bridging and buffering: Strategies for mitigating supply risk and improving supply chain performance. *International Journal of Production Economics*, 180, 183–197.
- Moran, P. (2005). Structural vs. relational embeddedness: Social capital and managerial performance. *Strategic Management Journal*, 26(12), 1129–1151.
- Morgeson, F.P. (2005). The external leadership of self-managing teams: Intervening in the context of novel and disruptive events. *Journal of Applied Psychology*, 90(3), 497–508.
- Morgeson, F.P., Mitchell, T.R., & Liu, D. (2015). Event system theory: An event-oriented approach to the organizational sciences. *Academy of Management Review*, 40(4), 515–537.
- Mosier, K.L., & Fischer, U.M. (2010). Judgment and decision making by individuals and teams: Issues, models, and applications. *Reviews of Human Factors and Ergonomics*, 6(1), 198–256.
- Muthén, L.K., & Muthén, B.O. (2017). *Mplus User's Guide* (8th ed.). Muthén & Muthén.
- N**
- Nahapiet, J., & Ghoshal, S. (1998). Social capital, intellectual capital, and the organizational advantage. *Academy of Management Review*, 23(2), 242–266.
- Norrman, A., & Wieland, A. (2020). The development of supply chain risk management over time: revisiting Ericsson. *International Journal of Physical Distribution & Logistics Management*, 50(6), 641–666.

O

- Olcott, G., & Oliver, N. (2014). Social capital, sensemaking, and recovery: Japanese companies and the 2011 earthquake. *California Management Review*, 56(2), 5–22.
- Oliva, R., & Watson, N. (2011). Cross-functional alignment in supply chain planning: A case study of sales and operations planning. *Journal of Operations Management*, 29(5), 434–448.
- Ouyang, M. (2014). Review on modeling and simulation of interdependent critical infrastructure systems. *Reliability Engineering and System Safety*, 121, 43–60.

P

- Pagell, M., Fugate, B., & Flynn, B.B. (2017). Call for papers for the first emerging discourse incubator: Research where the focal actor in the network is not a for-profit firm. *Journal of Supply Chain Management*.
- Park, G., & DeShon, R.P. (2018). Effects of group-discussion integrative complexity on intergroup relations in a social dilemma. *Organizational Behavior and Human Decision Processes*, 146, 62–75.
- Park, S., Grosser, T.J., Roebuck, A.A., & Mathieu, J.E. (2020). Understanding work teams from a network perspective: A review and future research directions. *Journal of Management*, 46(6), 1–27.
- Payne, G.T., Moore, C.B., Griffis, S.E., & Autry, C.W. (2011). Multilevel challenges and opportunities in social capital research. *Journal of Management*, 37(2), 491–520.
- Peck, H. (2005). Drivers of supply chain vulnerability: An integrated framework. *International Journal of Physical Distribution & Logistics Management*, 35(4), 210–232.
- Pereira, C.R., Christopher, M., & da Silva, A.L. (2014). Achieving supply chain resilience: The role of procurement. *Supply Chain Management: An International Journal*, 19(5/6), 626–642.
- Pereira, C.R., Lago da Silva, A., Tate, W.L., & Christopher, M. (2020). Purchasing and supply management (PSM) contribution to supply-side resilience. *International Journal of Production Economics*, 228, 1–16.
- Perez-Franco, R. (2016). Innovation is a team activity. *Supply Chain Management Review*, November, 8–9.
- Perrow, C. (1999). *Normal Accidents: Living with High-Risk Technologies* (Revised). Princeton University Press.

- Pescaroli, G., & Kelman, I. (2017). How critical infrastructure orients international relief in cascading disasters. *Journal of Contingencies and Crisis Management*, 25(2), 56–67.
- Pettit, T.J., Croxton, K.L., & Fiksel, J. (2013). Ensuring supply chain resilience: Development and implementation of an assessment tool. *Journal of Business Logistics*, 34(1), 46–76.
- Pettit, T.J., Fiksel, J., & Croxton, K.L. (2010). Ensuring supply chain resilience: Development of a conceptual framework. *Journal of Business Logistics*, 31(1), 1–21.
- Pillai, K.G., Hodgkinson, G.P., Kalyanaram, G., & Nair, S.R. (2017). The negative effects of social capital in organizations: A review and extension. *International Journal of Management Reviews*, 19(1), 97–124.
- Ponomarov, S.Y., & Holcomb, M.C. (2009). Understanding the concept of supply chain resilience. *The International Journal of Logistics Management*, 20(1), 124–143.
- Porck, J.P., Matta, F.K., Hollenbeck, J.R., Oh, J.K., Lanaj, K., & Lee, S.M. (2019). Social identification in multiteam systems: The role of depletion and task complexity. *Academy of Management Journal*, 62(4), 1137–1162.
- Pournader, M., Kach, A., & Talluri, S. (2020). A review of the existing and emerging topics in the supply chain risk management literature. *Decision Sciences*, 51(4), 867–919.
- Pournader, M., Rotaru, K., Kach, A.P., & Hajiagha, S.H.R. (2016). An analytical model for system-wide and tier-specific assessment of resilience to supply chain risks. *Supply Chain Management: An International Journal*, 21(5), 589–609.
- Power, N. (2018). Extreme teams: Toward a greater understanding of multiagency teamwork during major emergencies and disasters. *American Psychologist*, 73(4), 478–490.
- Preacher, K.J., Zhang, Z., & Zyphur, M.J. (2016). Multilevel structural equation models for assessing moderation within and across levels of analysis. *Psychological Methods*, 21(2), 189–205.
- Preston, D.S., Chen, D.Q., Swink, M., & Meade, L. (2017). Generating supplier benefits through buyer-enabled knowledge enrichment: A social capital perspective. *Decision Sciences*, 48(2), 248–287.

Q

Quick, K.S., & Feldman, M.S. (2014). Boundaries as junctures: Collaborative boundary work for building efficient resilience. *Journal of Public Administration Research and Theory*, 24(3), 673–695.

R

Ramaekers, P., Wit, T., & Pouwels, M. (2009). *Hoe druk is het nu werkelijk op het Nederlandse spoor? Het Nederlandse spoorgebruik in vergelijking met de rest van de EU-27*, The Hague (the Netherlands), Centraal Bureau voor de statistiek (Statistics Netherlands).

Raudenbush, S.W., & Bryk, A. (2002). *Hierarchical linear models: Applications and data analysis methods* (2nd ed.). Sage Publications.

Reagans, R., & McEvily, B. (2003). Network structure and knowledge transfer: The effects of cohesion and range. *Administrative Science Quarterly*, 48(2), 240–267.

Reagans, R., Zuckerman, E., & McEvily, B. (2004). How to make the team: Social networks vs. demography as criteria for designing effective teams. *Administrative Science Quarterly*, 49(1), 101–133.

Reimann, F., Kosmol, T., & Kaufmann, L. (2017). Responses to supplier-induced disruptions: A fuzzy-set analysis. *Journal of Supply Chain Management*, 53(4), 37–66.

Revilla, E., & Saenz, M.J. (2017). The impact of risk management on the frequency of supply chain disruptions: A configurational approach. *International Journal of Operations & Production Management*, 37(5), 557–576.

Riley, J.M., Klein, R., Miller, J., & Sridharan, V. (2016). How internal integration, information sharing, and training affect supply chain risk management capabilities. *International Journal of Physical Distribution & Logistics Management*, 46(10), 953–980.

Rinaldi, S.M., Peerenboom, J.P., & Kelly, T.K. (2001). Identifying, understanding, and analyzing critical infrastructure interdependencies. *IEEE Control Systems Magazine*, 21(6), 11–25.

Ro, Y.K., Su, H.C., & Chen, Y.S. (2016). A tale of two perspectives on an impending supply disruption. *Journal of Supply Chain Management*, 52(1), 3–20.

Roman, M. (2011). *Onderzoek spoorproblemen 27 juni 2011*, Brussels, Federale Overheidsdienst Mobiliteit en Veroer, Dienst Overheidsbedrijven en Spoorbeleid.

- Rosenthal, R., & Rubin, D.B. (1982). A simple, general purpose display of magnitude of experimental effect. *Journal of Educational Psychology*, 74(2), 166–169.
- Roux-Dufort, C. (2007). Is crisis management (only) a management of exceptions? *Journal of Contingencies and Crisis Management*, 15(2), 105–114.
- Rowley, T., Behrens, D., & Krackhardt, D. (2000). Redundant governance structures: An analysis of structural and relational embeddedness in the steel and semiconductor industries. *Strategic Management Journal*, 21(3), 369–386.
- Rudolph, J.W., & Repenning, N.P. (2002). Disaster dynamics: Understanding the role of quantity in organizational collapse. *Administrative Science Quarterly*, 47(1), 1–30.
- Russon, M.-A. (2021). *The cost of the Suez Canal blockage*. BBC News. <https://www.bbc.com/news/business-56559073>, date accessed: July 8, 2021.

S

- Sahebjamnia, N., Torabi, S.A., & Mansouri, S.A. (2018). Building organizational resilience in the face of multiple disruptions. *International Journal of Production Economics*, 197, 63–83.
- Sanders, N.R., Fugate, B.S., & Zacharia, Z.G. (2016). Interdisciplinary Research in SCM: Through the Lens of the Behavioral Theory of the Firm. *Journal of Business Logistics*, 37(2), 107–112.
- Sanders, N.R., Zacharia, Z.G., & Fugate, B.S. (2013). The interdisciplinary future of supply chain management research. *Decision Sciences*, 44(3), 413–429.
- Sawyer, E., & Harrison, C. (2020). Developing resilient supply chains: Lessons from high-reliability organisations. *Supply Chain Management: An International Journal*, 25(1), 77–100.
- Schoenherr, T., & Swink, M. (2012). Revisiting the arcs of integration: Cross-validations and extensions. *Journal of Operations Management*, 30(1–2), 99–115.
- Scholten, K., & Schilder, S. (2015). The role of collaboration in supply chain resilience. *Supply Chain Management: An International Journal*, 20(4), 471–484.
- Scholten, K., Scott, P.S., & Fynes, B. (2014). Mitigation processes – Antecedents for building supply chain resilience. *Supply Chain Management: An International Journal*, 19(2), 211–228.

- Scholten, K., Sharkey Scott, P., & Fynes, B. (2019). Building routines for non-routine events: Supply chain resilience learning mechanisms and their antecedents. *Supply Chain Management: An International Journal*, 24(3), 430–442.
- Scholten, K., Stevenson, M., & Van Donk, D.P. (2020). Dealing with the unpredictable: Supply chain resilience. *International Journal of Operations & Production Management*, 40(1), 1–10.
- Schorsch, T., Wallenburg, C.M., & Wieland, A. (2017). The human factor in SCM: Introducing a meta-theory of behavioral supply chain management. *International Journal of Physical Distribution & Logistics Management*, 47(4), 238–262.
- Sheffi, Y., & Rice, J.B. (2005). A supply chain view of the resilient enterprise. *MIT Sloan Management Review*, 47(1), 41–48.
- Snijders, T.A.B., & Bosker, R.J. (2012). *Multilevel Analysis: An Introduction to Basic and Advanced Multilevel Modeling* (2nd ed.). Sage Publications.
- Son, B.G., Chae, S., & Kocabasoglu-Hillmer, C. (2021). Catastrophic supply chain disruptions and supply network changes: a study of the 2011 Japanese earthquake. *International Journal of Operations & Production Management*, 41(6), 781–804.
- Stevens, M., & van Schaik, J. (2020). Implementing new technologies for complex care: The role of embeddedness factors in team learning. *Journal of Operations Management*, 66(1–2), 112–134.
- Stolze, H.J., Mollenkopf, D.A., Thornton, L.D., Brusco, M.J., & Flint, D.J. (2018). Supply chain and marketing integration: Tension in frontline social networks. *Journal of Supply Chain Management*, 54(3), 3–21.

T

- Tasheva, S., & Hillman, A.J. (2019). Integrating diversity at different levels: Multilevel human capital, social capital, and demographic diversity and their implications for team effectiveness. *Academy of Management Review*, 44(4), 746–765.
- Tenhiälä, A., & Salvador, F. (2014). Looking inside glitch mitigation capability: The effect of intraorganizational communication channels. *Decision Sciences*, 45(3), 437–466.
- Timmer, S., & Kaufmann, L. (2019). Do managers' dark personality traits help firms in coping with adverse supply chain events? *Journal of Supply Chain Management*, 55(4), 67–97.

- Tokar, T., & Swink, M. (2019). Public policy and supply chain management: Using shared foundational principles to improve formulation, implementation, and evaluation. *Journal of Supply Chain Management*, 55(2), 68–79.
- Tomlin, B. (2006). On the value of mitigation and contingency strategies for managing supply chain disruption risks. *Management Science*, 52(5), 639–657.
- Touboulic, A., Matthews, L., & Marques, L. (2018). On the road to carbon reduction in a food supply network: A complex adaptive systems perspective. *Supply Chain Management: An International Journal*, 23(4), 313–335.
- Transport Committee. (2018). Rail timetable changes: May 2018. *Seventh Report of Session 2017–19*, London, House of Commons.
- Treleven, M., & Schweikhart, S.B. (1988). A risk/benefit analysis of sourcing strategies: Single vs. multiple sourcing. *Journal of Operations Management*, 7(3–4), 93–114.
- Tsai, W. (2002). Social Structure of “Coopetition” Within a Multiunit Organization: Coordination, Competition, and Intraorganizational Knowledge Sharing. *Organization Science*, 13(2), 179–190.
- Tsai, W., & Ghoshal, S. (1998). Social capital and value creation: The role of intrafirm networks. *Academy of Management Journal*, 41(4), 464–476.
- Tsai, W.C. (2016). A dynamic sourcing strategy considering supply disruption risks. *International Journal of Production Research*, 54(7), 2170–2184.
- Tukamuhabwa, B.R., Stevenson, M., & Busby, J. (2017). Supply chain resilience in a developing country context: A case study on the interconnectedness of threats, strategies and outcomes. *Supply Chain Management: An International Journal*, 22(6), 486–505.
- Tukamuhabwa, B.R., Stevenson, M., Busby, J., & Zorzini, M. (2015). Supply chain resilience: Definition, review and theoretical foundations for further study. *International Journal of Production Research*, 53(18), 5592–5623.
- Tushman, M.L., & Nadler, D.A. (1978). Information processing as an integrating concept in organizational design. *Academy of Management Review*, 3(3), 613–624.

U

- Uitdewilligen, S., & Waller, M.J. (2018). Information sharing and decision-making in multidisciplinary crisis management teams. *Journal of Organizational Behavior*, 39(6), 731–748.

Urciuoli, L., Mohanty, S., Hintsä, J., & Boekesteijn, E.G. (2014). The resilience of energy supply chains: A multiple case study approach on oil and gas supply chains to Europe. *Supply Chain Management: An International Journal*, 19(1), 46–63.

Uzzi, B., & Lancaster, R. (2003). Relational embeddedness and learning: The case of bank loan managers and their clients. *Management Science*, 49(4), 383–399.

V

Vakil, B., & Linton, T. (2021). Why we're in the midst of a global semiconductor shortage. *Harvard Business Review*, February 26.

van de Velde, D. (2019). Splitsen trein en spoor leidt tot coördinatieproblemen. *Economisch Statistische Berichten*, 104(4778S).

van den Adel, M.J., de Vries, T.A., & van Donk, D.P. (2021). Resilience in interorganizational networks: Dealing with day-to-day disruptions in critical infrastructures. *Supply Chain Management: An International Journal*, ahead-of-print.

van der Vegt, G.S., Essens, P., Wahlstrom, M., & George, G. (2015). Managing risk and resilience. *Academy of Management Journal*, 58(4), 971–980.

van Eeten, M., Nieuwenhuijs, A., Luijff, E., Klaver, M., & Cruz, E. (2011). The state and the threat of cascading failure across critical infrastructures: The implications of empirical evidence from media incident reports. *Public Administration*, 89(2), 381–400.

van Knippenberg, D. (2017). Team innovation. *Annual Review of Organizational Psychology and Organizational Behavior*, 4(1), 211–233.

Villena, V.H., Revilla, E., & Choi, T.Y. (2011). The dark side of buyer-supplier relationships: A social capital perspective. *Journal of Operations Management*, 29(6), 561–576.

W

Wagner, S.M., & Bode, C. (2006). An empirical investigation into supply chain vulnerability. *Journal of Purchasing and Supply Management*, 12(6), 301–312.

Wang, Q., Craighead, C.W., & Li, J.J. (2014). Justice served: Mitigating damaged trust stemming from supply chain disruptions. *Journal of Operations Management*, 32(6), 374–386.

- Weick, K.E., & Sutcliffe, K.M. (2011). *Managing the unexpected: Resilient performance in an age of uncertainty* (2nd ed.). John Wiley & Sons.
- Wheeler, A.R., Shanine, K.K., Leon, M.R., & Whitman, M. V. (2014). Student-recruited samples in organizational research: A review, analysis, and guidelines for future research. *Journal of Occupational and Organizational Psychology*, 87(1), 1–26.
- Wieland, A. (2021). Dancing the supply chain: Toward transformative supply chain management. *Journal of Supply Chain Management*, 57(1), 58–73.
- Wildavsky, A.B. (1988). *Searching for safety*. Transaction Publishers.
- Williams, B.D., Roh, J., Tokar, T., & Swink, M. (2013). Leveraging supply chain visibility for responsiveness: The moderating role of internal integration. *Journal of Operations Management*, 31(7–8), 543–554.
- Williams, T.A., Gruber, D.A., Sutcliffe, K.M., Shepherd, D.A., & Zhao, E.Y. (2017). Organizational response to adversity: Fusing crisis management and resilience research streams. *Academy of Management Annals*, 11(2), 733–769.
- Woehr, D.J., Loignon, A.C., Schmidt, P.B., Loughry, M.L., & Ohland, M.W. (2015). Justifying aggregation with consensus-based constructs: A review and examination of cutoff values for common aggregation indices. *Organizational Research Methods*, 18(4), 704–737.
- Wong, C.Y., Boon-Itt, S., & Wong, C.W.Y. (2011). The contingency effects of environmental uncertainty on the relationship between supply chain integration and operational performance. *Journal of Operations Management*, 29(6), 604–615.
- Wu, B., Tang, A., & Wu, J. (2016). Modeling cascading failures in interdependent infrastructures under terrorist attacks. *Reliability Engineering and System Safety*, 147, 1–8.

X

- Xiao, C.-Y., Petkova, B., Molleman, E., & van der Vaart, T. (2019). Technology uncertainty in supply chains and supplier involvement: The role of resource dependence. *Supply Chain Management: An International Journal*, 24(6), 697–709.

Y

- Yan, T., & Nair, A. (2016). Structuring supplier involvement in new product development: A China–U.S. study. *Decision Sciences*, 47(4), 589–627.

Z

- Zhang, F., Welch, E.W., & Miao, Q. (2018). Public organization adaptation to extreme events: Mediating role of risk perception. *Journal of Public Administration Research and Theory*, 28(3), 371–387.
- Zhao, K., Zuo, Z., & Blackhurst, J. (2019). Modelling supply chain adaptation for disruptions: An empirically grounded complex adaptive systems approach. *Journal of Operations Management*, 65(2), 190–212.
- Zheng, B. (2000). Summarizing the goodness of fit of generalized linear models for longitudinal data. *Statistics in Medicine*, 19(10), 1265–1275.
- Zobel, C.W., & Khansa, L. (2014). Characterizing multi-event disaster resilience. *Computers and Operations Research*, 42, 83–94.

