

## University of Groningen

### Association of ECG characteristics with clinical and echocardiographic outcome to CRT in a non-LBBB patient population

Dural, Muhammet; van Stipdonk, Antonius M W; Salden, Floor C W M; Ter Horst, Iris; Crijns, Harry J G M; Meine, Mathias; Maass, Alexander H; Kloosterman, Mariëlle; Vernooy, Kevin

*Published in:*

Journal of interventional cardiac electrophysiology

*DOI:*

[10.1007/s10840-020-00866-z](https://doi.org/10.1007/s10840-020-00866-z)

**IMPORTANT NOTE: You are advised to consult the publisher's version (publisher's PDF) if you wish to cite from it. Please check the document version below.**

*Document Version*

Publisher's PDF, also known as Version of record

*Publication date:*

2021

[Link to publication in University of Groningen/UMCG research database](#)

*Citation for published version (APA):*

Dural, M., van Stipdonk, A. M. W., Salden, F. C. W. M., Ter Horst, I., Crijns, H. J. G. M., Meine, M., Maass, A. H., Kloosterman, M., & Vernooy, K. (2021). Association of ECG characteristics with clinical and echocardiographic outcome to CRT in a non-LBBB patient population. *Journal of interventional cardiac electrophysiology*, 62, 9–19. <https://doi.org/10.1007/s10840-020-00866-z>

#### Copyright

Other than for strictly personal use, it is not permitted to download or to forward/distribute the text or part of it without the consent of the author(s) and/or copyright holder(s), unless the work is under an open content license (like Creative Commons).

The publication may also be distributed here under the terms of Article 25fa of the Dutch Copyright Act, indicated by the "Taverne" license. More information can be found on the University of Groningen website: <https://www.rug.nl/library/open-access/self-archiving-pure/taverne-amendment>.

#### Take-down policy

If you believe that this document breaches copyright please contact us providing details, and we will remove access to the work immediately and investigate your claim.

*Downloaded from the University of Groningen/UMCG research database (Pure): <http://www.rug.nl/research/portal>. For technical reasons the number of authors shown on this cover page is limited to 10 maximum.*



# Association of ECG characteristics with clinical and echocardiographic outcome to CRT in a non-LBBB patient population

Muhammet Dural<sup>1</sup> · Antonius M. W. van Stipdonk<sup>2</sup> · Floor. C. W. M. Salden<sup>2</sup> · Iris Ter Horst<sup>3</sup> · Harry J. G. M. Crijns<sup>2</sup> · Mathias Meine<sup>3</sup> · Alexander H. Maass<sup>4</sup> · Mariëlle Kloosterman<sup>4</sup> · Kevin Vernooij<sup>2,5</sup>

Received: 29 April 2020 / Accepted: 4 September 2020 / Published online: 12 September 2020  
© Springer Science+Business Media, LLC, part of Springer Nature 2020

## Abstract

**Purpose** Effectiveness of cardiac resynchronization therapy (CRT) in patients without left bundle branch block (non-LBBB) QRS morphology is limited. Additional selection criteria are needed to identify these patients.

**Methods** Seven hundred ninety consecutive patients with non-LBBB morphology, who received a CRT-device in 3 university centers in the Netherlands, were selected. Pre-implantation 12-lead ECGs were evaluated on morphology, duration, and area of the QRS complex, as well as on PR interval, left ventricular activation time (LVAT), and the presence of fragmented QRS (fQRS). Association of these ECG features with the primary endpoint: a combination of left ventricular assist device (LVAD) implantation, cardiac transplantation and all-cause mortality, and secondary endpoint—echocardiographic reduction of left ventricular end-systolic volume (LVESV)—were evaluated.

**Results** The primary endpoint occurred more often in non-LBBB patients with with PR interval  $\geq 230$ ms, QRS area  $< 109\mu\text{Vs}$ , and with fQRS. Multivariable regression analysis showed independent associations of QRS area (HR 2.33 [1.44, 3.77],  $p = 0.001$ ) and PR interval (HR 2.03 [1.51, 2.74],  $p < 0.001$ ) only. Mean LVESV reduction was significantly lower in patients with baseline RBBB, QRS duration  $< 150$  ms, PR interval  $\geq 230$  ms, and in QRS area  $< 109\mu\text{Vs}$ . Multivariable regression analyses only showed significant associations between QRS area  $\geq 109\mu\text{Vs}$  (OR 2.00 [1.09, 3.66]  $p = 0.025$ ) and probability of echocardiographic response to CRT.

**Conclusions** In the heterogeneous non-LBBB patient population, QRS area and PR prolongation rather than traditional QRS duration and morphology are associated to both clinical and echocardiographic outcomes of CRT.

**Keywords** Cardiac resynchronization therapy · Non-left bundle branch block · Electrocardiography · QRS area

Muhammet Dural and Antonius M. W. van Stipdonk contributed equally to this work.

**Electronic supplementary material** The online version of this article (<https://doi.org/10.1007/s10840-020-00866-z>) contains supplementary material, which is available to authorized users.

✉ Muhammet Dural  
muhammet\_dural@hotmail.com

<sup>1</sup> Department of Cardiology, Eskişehir Osmangazi University Faculty of Medicine, 26040, Odunpazarı, Eskişehir, Turkey

<sup>2</sup> Department of Cardiology, Cardiovascular Research Institute Maastricht (CARIM), Maastricht University Medical Centre+, Maastricht, the Netherlands

<sup>3</sup> Department of Cardiology, University Medical Centre Utrecht, Utrecht, the Netherlands

<sup>4</sup> Department of Cardiology, University of Groningen, University Medical Centre Groningen, Groningen, the Netherlands

<sup>5</sup> Department of Cardiology, Radboud University Medical Centre, Nijmegen, the Netherlands

## 1 Introduction

Cardiac resynchronization therapy (CRT) is an effective treatment for patients with heart failure (HF) with a reduced ejection fraction and evidence of dyssynchronous electrical ventricular activation. Typically, patients with left bundle branch block (LBBB) respond well to CRT. Response in patients with non-LBBB is known to be less [1–4]. Current guideline recommendations for CRT are based primarily on the presence of LBBB QRS morphology and then by QRS duration [5]. There is only limited data to support the use of these two ECG parameters together and even less for the use of QRS duration in non-LBBB patients [6, 7]. However, as response and non-response to CRT is almost equally distributed among non-LBBB patients, research should focus on finding additional predictors in this heterogeneous group of patients. Few studies have evaluated additional 12-lead ECG characteristics that may contribute to the characterization of non-LBBB patients and their chance of response to CRT.

Subanalyses of landmark trials suggest significant differences in outcome to CRT in non-LBBB patients with a right bundle branch block (RBBB) conduction pattern, as compared with those with a non-specific interventricular conduction delay (IVCD) [1, 2]. Also PR interval prolongation over 230 ms has been associated with increased benefit from CRT [8, 9]. Furthermore, retrospective cohort studies have identified left ventricular activation time (LVAT), fragmented QRS (fQRS), and vectorcardiographic QRS area as alternative methods in the evaluation of electrical dyssynchrony in patients with HF and predictors of response to CRT [10–13]. However, these parameters have not been specifically studied in a non-LBBB CRT patient population. Overall there is a lack of evidence of the value of known additional ECG parameters in the specific cohort of non-LBBB patients.

In this study we aimed to assess the additional value of these ECG characteristics in a large non-LBBB patient population on the association with both clinical and echocardiographic endpoints in CRT-treated patients.

## 2 Methods

### 2.1 Patient population

The Maastricht-Utrecht-Groningen (MUG) cohort consisted of 1946 consecutive patients implanted with CRT in either tertiary centres between 2001 and 2015, with baseline 12-lead ECG available. For the present study, we considered patients selected for de novo CRT device implantation according to at that time prevailing guidelines [14, 15]. Only patients with non-LBBB QRS morphology were considered for the present analysis. For PR interval prolongation analyses, patients with atrial fibrillation on their baseline ECG were excluded.

Baseline data were retrieved from local hospital patient information systems. Patient characteristics like HF etiology and classification, comorbidities, and medication were retrieved from patient history and referral letters. HF etiology was deemed ischemic when there was clear evidence of myocardial infarction or coronary artery bypass grafting (CABG) in the medical history. Device data were retrieved from specific device databases. ICD programming and biventricular pacing were according to treating physicians preference. Left ventricular lead location was judged from the fluoroscopic images or chest X-ray. The Dutch Central Committee on Human-related Research (CCMO) allows for the use of anonymous data without prior approval of an institutional review board provided that the data are acquired for routine patient care. All data used were handled anonymously.

### 2.2 Electro- and vectorcardiography

Electrocardiographic analyses were performed blinded to outcomes. Recorded baseline 12-lead ECGs were stored digitally in the MUSE Cardiology Information system (GE Medical System). LBBB morphology was defined according to the presence of accepted criteria, including QRS duration  $\geq 130$ ms, QS, or rS in lead V<sub>1</sub>, mid QRS notching or slurring in  $\geq 2$  consecutive leads (V<sub>1</sub>, V<sub>2</sub>, I, aVL, V<sub>5</sub>, or V<sub>6</sub>) [16], and absent Q waves in leads V<sub>5</sub> and V<sub>6</sub>.

Patients classified as non-LBBB were thereafter analysed for QRS morphology, QRS duration, PR interval, QRS area, LVAT and fQRS. RBBB morphology was defined as the presence of any R wave  $\geq 50$ ms or any RSR' pattern (independent of R/R' ratio) in leads V<sub>1</sub> or V<sub>2</sub>. IVCD was defined as the absence of RBBB. QRS duration and PR interval were determined using automated ECG readings. Using a cut-off of 150 ms, non-LBBB patient were divided into two groups, QRS 120–150 ms and QRS > 150ms. PR interval prolongation was defined as PR  $\geq 230$ ms, as suggested previously [8]. QRS area was calculated as described previously [17, 18]. In brief, custom Matlab software (MathWorks Inc., Natick, Massachusetts) was used to convert the 12-lead ECG into three orthogonal VCG leads (X-, Y-, and Z-) using the Kors conversion matrix [19]. QRS area was calculated as the sum of the area under the QRS complex in the calculated vectorcardiographic X, Y, and Z lead [QRS<sub>area</sub> = (QRS<sub>area,x</sub><sup>2</sup> + QRS<sub>area,y</sub><sup>2</sup> + QRS<sub>area,z</sub><sup>2</sup>)<sup>1/2</sup>]. Patient groups were defined by QRS area  $\geq$  or < 109  $\mu$ Vs, based on the findings of a previous study in unselected CRT patients [20]. LVAT was measured as the time between first notch in any of the leads V<sub>1</sub>, V<sub>2</sub>, I, aVL, V<sub>5</sub>, or V<sub>6</sub> and the end of the QRS complex, as described previously [11, 21]. Patient groups were stratified according to LVAT  $\geq$  or < 125 ms, based on previous analyses in the unselected CRT population [11]. The presence of fQRS was defined as the presence of >2 R' or > 2 notches in the S waves in 2 contiguous leads [22]. Examples of the ECG criteria used are provided in Supplementary Figure 1.

### 2.3 Study endpoints

The primary endpoint was a combination of all-cause mortality, LV assist device implantation, and cardiac transplantation.

Secondary endpoint was reduction of  $\geq 15\%$  in left ventricular end-systolic volume (LVESV) determined by echocardiography at 6 months after implantation. Left ventricular dimensions and ejection fraction measurements were preferably calculated by Simpsons modified biplane method. Information was obtained from hospital records, linked to municipal registries. End of follow-up was defined at December 31st of 2015. Data was considered missing when

follow-up was not in the centre where the implantation was performed.

## 2.4 Statistical analysis

Statistical analysis was performed using IBM SPSS statistics software version 21 (SPSS Inc., Chicago, IL, USA). Continuous and discrete variables are presented as mean  $\pm$  standard deviation (SD) and counts (percentages), respectively. Correlations between ECG parameters were tested using a  $X^2$  test or bivariate Pearson correlation when appropriate. Dichotomous variables were compared using a  $X^2$  test. Continuous variables were compared using a Student t-test. Overall differences were evaluated for ECG parameters. Kaplan-Meier survival analyses and cumulative hazard analyses were used when appropriate to evaluate the association between the ECG parameters and the outcomes. The log-rank test was used to determine probability values. Cox regression analyses were used to assess univariable and multivariable effects of ECG parameters, on the association with the primary outcome. Variables included in the multivariable analysis were all variables that significantly differed between the compared groups. Comparison of continuous echocardiographic values was performed using 1-way ANOVA. Logistic regression analyses were used to assess univariable effects of ECG parameters on continuous echocardiographic response variables. Logistic regression analysis was used to assess binary echocardiographic response, in a univariable and multivariable model. Variables included in the multivariable model were all relevant clinical variables that were significantly differed between the compared groups. Hazard ratios (HR) and odds ratio (OR) were calculated for cox and logistic regression analyses, respectively. A two-sided  $p$  value  $< 0.05$  was considered statistically significant.

## 3 Results

### 3.1 Study population

The final study population consisted of 790 Non-LBBB patients after exclusion of patients with baseline RV pacing ( $n = 340$ ), baseline QRS duration below 120 ms ( $n = 114$ ), and patients with LBBB QRS morphology ( $n = 702$ ). Patient selection is shown in Fig. 1. With respect to PR interval prolongation analyses, patients with atrial fibrillation ( $n = 168$ ) on their baseline ECG were excluded.

### 3.2 Baseline characteristics

Baseline characteristics of the 790 non-LBBB patients are shown in Table 1. The study population was evaluated in patient groups stratified according to QRS morphology,

QRS duration, PR interval, QRS area, LVAT and fQRS presence. The patient selection process is illustrated in Fig. 1. Patients with baseline IVCD QRS morphology, QRS of duration  $\geq 150$ ms, QRS area of  $\geq 109\mu\text{Vs}$ , LVAT of  $\geq 125$ ms, and fQRS had significantly lower LVEF and larger LV dimensions.

Significant, but generally weak correlations were observed between QRS morphology and QRS area ( $p < 0.001$ ,  $r = -0.289$ ), QRS duration and QRS area ( $p < 0.001$ ,  $r = 0.492$ ), QRS duration and LVAT ( $p < 0.001$ ,  $r = 0.845$ ), QRS duration and fQRS ( $p < 0.001$ ,  $r = 0.211$ ), PR interval duration and QRS area ( $p < 0.001$ ,  $-r = 0.150$ ), QRS area and LVAT ( $p < 0.001$ ,  $r = 0.397$ ), and LVAT and fQRS ( $p = 0.008$ ,  $r = 0.102$ ).

### 3.3 Primary endpoint

Data on primary endpoint was available in all but one patient (99.9%). In a mean follow-up time of  $3.7 \pm 2.3$  years, 308 patients (39%) experienced the primary endpoint.

Figure 2 shows Kaplan-Meier estimates of event-free survival in non-LBBB patient groups stratified to predefined ECG parameters. Occurrence of the primary endpoint was significantly associated with PR interval, QRS area, and fQRS. Primary endpoint occurrence was significantly higher in patients with a PR interval of  $\geq 230$ ms (54 vs 34%, HR 2.23 [1.67, 3.00] and in the presence of fQRS (47 vs 26%, HR 1.44 [1.12, 1.85],  $p = 0.004$ ). On the other hand, the occurrence of the primary endpoint was significantly lower when QRS area was  $> 109\mu\text{Vs}$  (32 vs 42%, HR 0.64 [0.50, 0.81],  $p < 0.001$ ). Patient subgroups stratified according to QRS duration, -morphology, and LVAT did not significantly differ with respect to the occurrence of the primary endpoint.

A multivariable regression analysis showed independent associations of QRS area (HR 2.33 [1.44, 3.77],  $p = 0.001$ ) and PR interval (HR 2.03 [1.51, 2.74],  $p < 0.001$ ) with the primary endpoint but failed to show independent associations of fQRS with the primary endpoint.

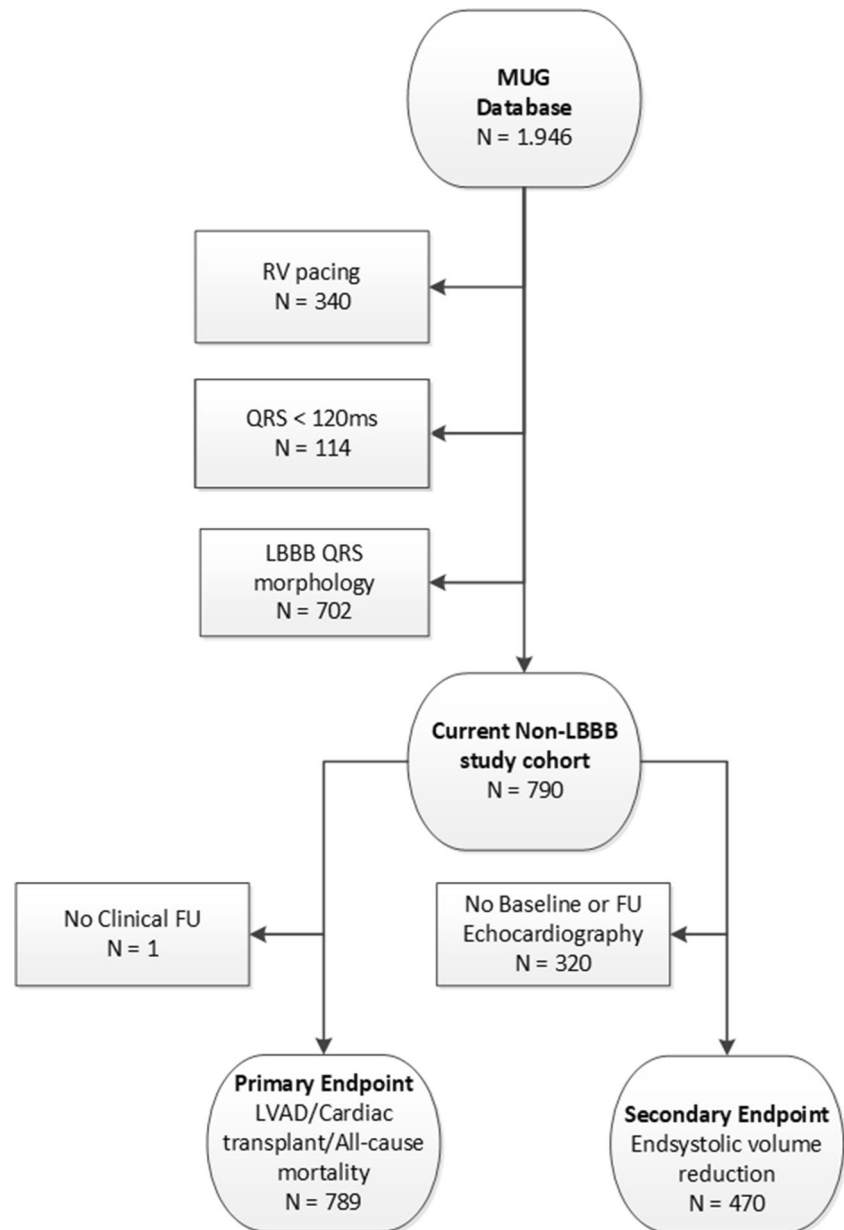
### 3.4 Echocardiographic response

Data on the secondary endpoint of reverse remodelling was available in 470 patients (59.5%). Mean LVESV reduction was  $11 \pm 29\%$ . Echocardiographic response was present in 207 (44%) of the 470 patients.

Echocardiographic response to CRT in different subgroups is shown in Fig. 3. Mean LVESV reduction was significantly lower in RBBB patients compared with IVCD patients ( $-1 \pm 36$  vs  $13 \pm 27\%$ ,  $p = 0.001$ ), QRS duration  $< 150$ ms patients compared with  $\geq 150$ ms ( $5 \pm 29$  vs  $15 \pm 28\%$ ,  $p < 0.001$ ), PR interval  $\geq 230$ ms compared with  $< 230$  ms ( $6 \pm 24$  vs  $14 \pm 29\%$ ,  $p = 0.003$ ), and in QRS area  $< 109\mu\text{Vs}$  patients compared with  $\geq 109\mu\text{Vs}$  ( $7 \pm 27$  vs  $19 \pm 30\%$ ,  $p < 0.001$ ). There

### Fig. 1 Patient data selection and availability for analyses.

The entire MUG cohort consisted of all patients with a CRT device implanted from January 2001 to January 2015 in 3 university hospitals in the Netherlands. For the present study patients with QRS < 120 ms and patients with LBBB were excluded. Availability of data for analyses on the primary and secondary endpoints is also shown. *BL* baseline, *FU* follow-up, *HF* HF, *LBBB* left bundle branch block, *LVAD* left ventricular assist device, *RV pacing* right ventricular pacing



were no significant differences between echocardiographic outcomes of subgroups stratified according to LVAT and fQRS.

Regression analyses showed significant associations between QRS duration  $\geq 150$  ms (OR 1.86 [1.27, 2.72],  $p = 0.001$ ) and QRS area  $\geq 109 \mu\text{Vs}$  (OR 2.35 [1.60, 3.45],  $p < 0.001$ ) and the probability of echocardiographic response (LVESV reduction  $\geq 15\%$ ). But did not for QRS morphology, PR interval prolongation, LVAT, or fQRS. Multivariable correction for baseline differences however no longer showed significant associations between echocardiographic response and QRS duration, whereas baseline QRS area  $\geq 109 \mu\text{Vs}$

remained significantly associated with echocardiographic remodeling (OR 2.00 [1.09, 3.66]  $p = 0.025$ )

## 4 Discussion

This study shows that QRS area  $\geq 109 \mu\text{Vs}$  and PR interval  $< 230$  ms are strongly associated to both the occurrence of LVAD implantation, cardiac transplantation, or all-cause mortality, as well as echocardiographic outcomes in non-LBBB patients treated with CRT. RBBB as opposed to IVCD and QRS duration only showed associations to echocardiographic

remodelling, but were not independently associated with either outcomes.

#### 4.1 QRS area in non-LBBB

There is no study evaluating the association between QRS area and CRT response in non-LBBB patients. QRS area has been shown to be associated to echocardiographic response in the general CRT population. Recently Maass et al. [23] prospectively studied a large set of clinical, electrocardiographic, echocardiographic, and blood biomarkers to predict CRT response in 240 patients. They found that QRS area (as a continuous measure) was the strongest predictor of reverse remodelling as defined by the reduction of indexed LVESV, stronger than currently recommended QRS morphology and duration. This confirmed results from earlier studies [13, 17, 24] and was confirmed in the non-LBBB patient population in the present study. Non-LBBB patients with QRS area  $\geq 109$  uVs showed significantly higher mean LVESV decrease, resulting in a higher response rate compared with patients with QRS area  $< 109$  uVs. Moreover this study is the first to show the strong association to relevant long-term clinical outcome of all-cause mortality, cardiac transplantation, or LVAD implantation.

The clear additional value of QRS area in this cohort may be explained by the heterogeneity of the non-LBBB cohort and therefore wide range of underlying substrates contributing to the electrical activation displayed on the 12-lead ECG. Whereas this gives rise to uncertainties concerning ECG morphological characteristics determined manually, QRS area is a quantitative semi-automatically determined parameter, not subjected to interpretation. Moreover QRS area has previously been shown to be associated to the presence of scar [13] and may therefore exclude patients with significant scar and therefore lesser benefit from CRT and overall worse outcome.

#### 4.2 PR prolongation in non-LBBB

A recent subanalysis of the MADIT-CRT trial data has shown a prolonged PR interval ( $\geq 230$ ms) in non-LBBB patients to be associated to increased benefit from CRT compared with ICD only therapy in terms of HF hospitalization and death (RRR 73%) and all-cause mortality (RRR 81%) [8]. Our study shows that non-LBBB patients with a prolonged PR interval, treated with CRT, have a higher chance of any of the reported endpoints, but this does not state anything about the effect of CRT on these endpoints. In the study by Kutuyifa et al. [8], 22% of patients with a normal PR interval and 48% of those with a prolonged PR interval experienced the primary endpoint of HF hospitalization or death. In the CRT-D-treated arms of the study this was 25 versus 10% of patients with a prolonged PR interval versus a normal PR interval in a mean 29-month

follow-up. Concordantly, in the present study, in which mean follow-up was 47 months, the primary endpoint occurred in 53 vs 34% of non-LBBB with and without prolonged PR interval patients, respectively. However, the greater amenability to CRT found in the subanalyses by Kutuyifa et al. in patients with PR prolongation  $\geq 230$  ms was not reflected by the results on echocardiographic remodelling in this study. As patients with PR prolongation showed significantly lower reduction in LVESV, the contrary could be expected, as is reflected by an overall worse outcome in these patients. In contrast to the results of the MADIT-CRT subanalysis, a subanalysis of the REVERSE-trial showed no significant association of PR prolongation to benefit from CRT at all. That study, however, used a cut off for PR interval prolongation of 180 ms (median of population); possibly, this lower cut off may contribute to the absence of any effect as PR prolongation substantially less than 230 ms may not result in the proposed negative haemodynamic consequences [9]. Also, in a retrospective CRT study involving 291 LBBB patients, it was found that patients with PR interval  $> 200$  ms had less reduction in QRS duration and QRS area and shorter survival free of heart transplantation or LV assist device implantation [25].

We hypothesize that the overall worse outcome in patients with a significantly prolonged PR interval seen in the present study is due to more extensive cardiac disease, making prolonged PR interval a marker of a worse HF substrate. Although CRT should be able to amend detrimental effects on acute haemodynamics of LV filling in non-LBBB patients with prolonged PR interval, more extensive underlying disease, often accompanied by fibrosis, cannot be corrected by CRT [26]. Baseline characteristics however did not reflect a poorer baseline heart failure status in patients with PR prolongation at baseline.

#### 4.3 QRS morphology and duration

Several subanalyses of landmark trials have shown the reduced likelihood of benefit from CRT in non-LBBB patients [27–29]. Although some have explored the additional value of RBBB morphology in the non-LBBB patient group, this is the first study specifically addressing the non-LBBB patient subgroup for the evaluation of known baseline 12-lead ECG parameters' association to outcome of CRT.

Subanalyses of the MADIT-CRT, REVERSE, and RAFT trials further stratified non-LBBB patients into RBBB and IVCD QRS morphology [1, 2, 4]. Whereas these analyses conclude that IVCD patients derive no clinical benefit or even harm from CRT, and RBBB patients show intermediate benefit, Zareba et al. [1] did find significant echocardiographic remodelling in both RBBB and IVCD patients treated with CRT compared with those treated with ICD-therapy alone. Furthermore echocardiographic remodelling in the

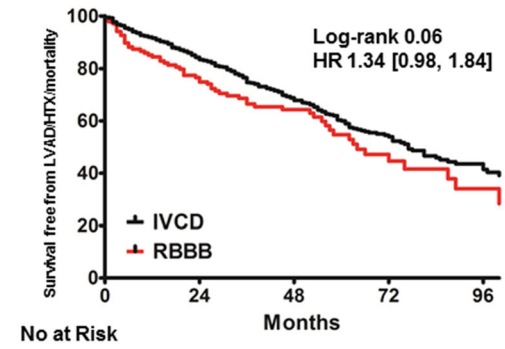
**Table 1** Baseline characteristics. Patient baseline characteristics stratified according to the presence of baseline ECG parameters.

	Total	RBBB	IVCD	QRS ≥ 150	QRS 120–150	PR ≥ 230	PR < 230	QRS area ≥ 109	QRS area < 109	LVAT ≥ 125	LVAT < 125	No fQRS	fQRS
N = (%)	790 (100)	133 (17)	653 (83)	463 (59)	327 (41)	120 (19)	508 (81)	266 (34)	514 (66)	124 (18)	555 (82)	282 (36)	503 (64)
<b>Demographics</b>													
Male (%)	76.5	85.0*	74.7	72.1	68.8	89.2*	71.1	67.2*	74.7	76.6	75.0	81.6*	73.6
Age	66.4	67.0	66.4	66.9	66.3	67.4	65.6	66.0	67.2	65.0	66.7	67.3	65.9
BMI	26.6	27.0	26.5	26.2*	27.1	26.4	26.6	25.4*	27.3	26.4	26.7	26.8	26.4
iCMP (%)	56.1	60.2	55.4	47.9	53.1	58.3	56.8	36.9*	62.3	46.8*	58.4	51.8	58.4
Afib (%)	18.0	24.1*	16.7	12.5	19.3	-	-	9.2*	19.3	14.5	18.2	16.1	21.3
NYHA II-III (%)	92.0	96.2	91.2	92.9	92.3	88.8	93.6	92.4	93.2	92.7	91.5	91.3	92.6
<b>Medication</b>													
B-blok (%)	80.1	81.8*	72.3	82.5	81.8	70.0*	84.7	82.6	81.9	79.8	80.1	84.0*	77.8
ACEi/ARB (%)	89.7	85.4	90.6	90.2	89.9	86.7	91.8	89.9	90.4	92.7	89.8	90.4	89.3
MRA (%)	45.4	37.7	46.7	45.5	44.7	48.8	44.5	40.5	50.3	43.5	47.8	41.0	48.3
<b>Echo</b>													
LVEF (%)	24.0	26.5*	23.5	23.2*	25.2	24.0	23.8	22.8*	24.8	21.4*	24.1	25.1*	23.3
LVESV (ml)	175	153*	179	187*	158	181	180	187*	168	210*	171	160*	184
LVEDV (ml)	228	209*	232	241*	209	239	233	241*	221	268*	223	212*	238
Clear (ml/min)	70.6	70.2	68.2	67.4	70.3	63.2	71.4	68.7	69.0	69.6	68.9	69.1*	68.4
NTproBNP (pmol/L)	366	370	365	419*	290	437.5	313.8	497*	311	402	365	379	357
<b>Device</b>													
ICD	94.8	91.7	95.4	93.2	93.6	95.0	96.1	91.9	94.7	96.0	94.2	91.5*	96.8
LV lead lateral	91.6	86.3*	92.4	92.9	90.7	91.3	92.0	90.2	91.3	89.4	91.6	92.1	91.3

\**p* < 0.05

ACEi/ARB angiotensin converting enzyme inhibitor/angiotensin receptor blockers, Afib atrial fibrillation, B-block Betablockers, BMI body mass index, Clear creatinine clearance, fQRS fragmented QRS, ICD implantable cardioverter defibrillator, iCMP ischemic cardiomyopathy, IVCD non-specific intraventricular conduction delay, LVAT left ventricular activation time, LVEF left ventricular ejection fraction, LVEDV left ventricular end-diastolic volume, LVESV left ventricular end-systolic volume, LV lead lateral position of LV lead, MRA mineralocorticoid receptor antagonist. NT-proBNP N-terminal prohormone of brain natriuretic peptide, NYHA New York Heart Association classification of HF, PR PR interval, RBBB right bundle branch block

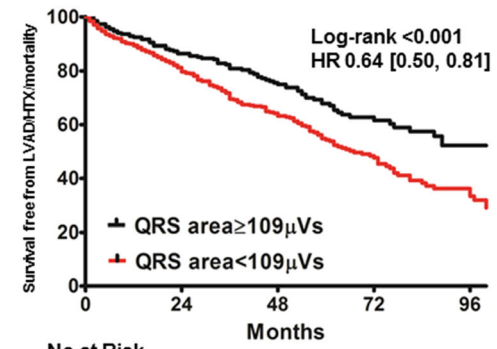
**a QRS morphology**



No at Risk

IVCD	646	486	272	101	40
RBBB	135	92	52	18	8

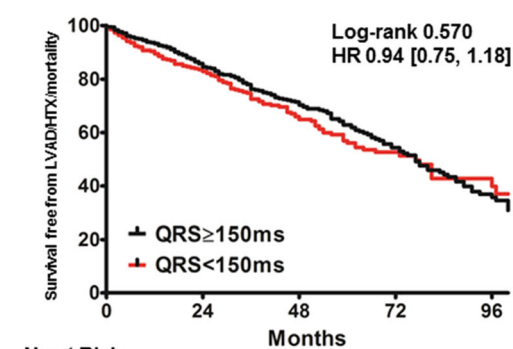
**d QRS area**



No at Risk

Area ≥ 109	264	207	132	52	26
Area < 109	508	366	189	66	23

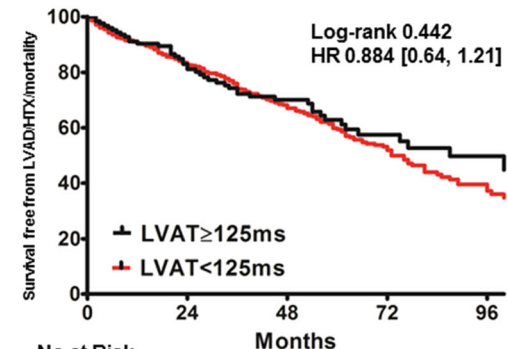
**b QRS duration**



No at Risk

QRS ≥ 150	458	347	206	79	32
QRS < 150	323	242	125	40	15

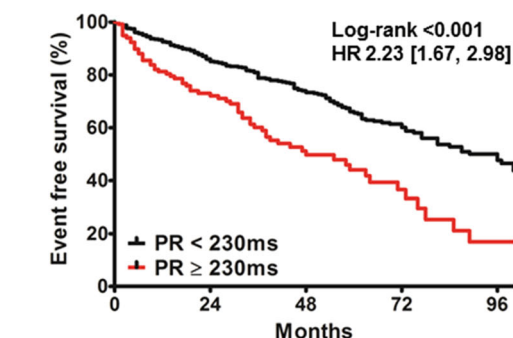
**e LVAT**



No at Risk

LVAT ≥ 125	123	90	61	25	13
LVAT < 125	549	411	228	84	33

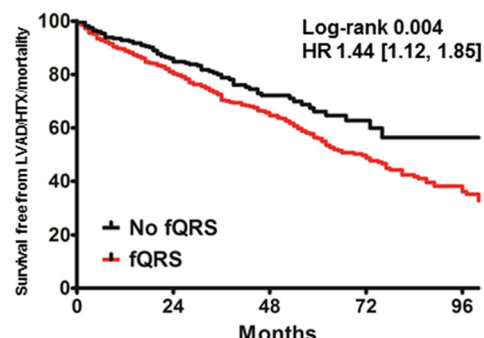
**c PR interval**



No at Risk

PR < 230	505	385	233	97	42
PR ≥ 230	117	76	35	14	2

**f fQRS**



No at Risk

No fQRS	278	196	85	23	10
fQRS	498	378	238	97	38

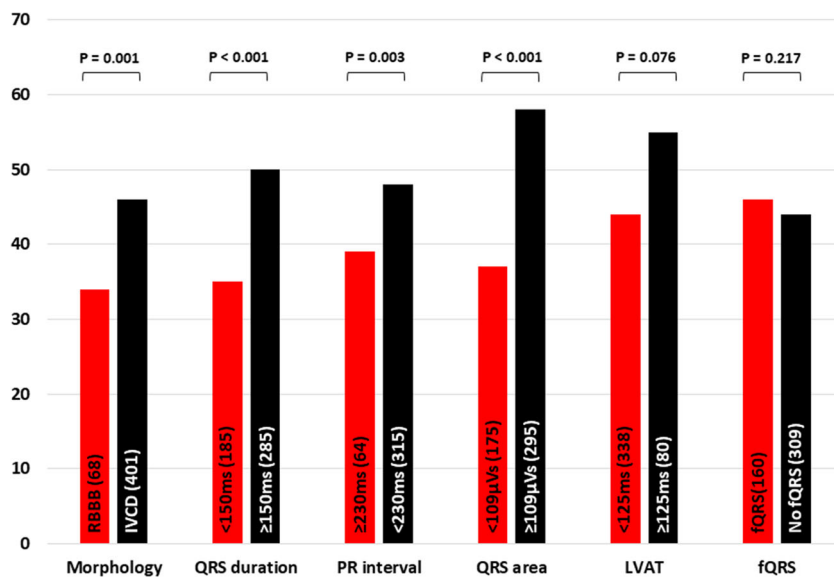
**Fig. 2** Kaplan-Meier estimates of survival free of the primary endpoint (combination of LVAD, cardiac transplantation or all-cause mortality). Patients are stratified by (a) QRS morphology (RBBB or IVCD), (b) QRS duration < or ≥ 150 ms, (c) PR interval < or ≥ 230 ms, (d) QRS area < or ≥ 109 μVs, (e) LVAT < or ≥ 125 ms, and

(f) the presence of fQRS. *fQRS* fragmented QRS, *HR* hazard ratio, *IVCD* non-specific intraventricular conduction delay, *LVAD* left ventricular assist device, *LVAT* left ventricular activation time, *RBBB* right bundle branch block



**Fig. 3 Echocardiographic reduction in LVESV and response rate.**

Echocardiographic LVESV reduction in percentage at follow-up echocardiography in patient groups stratified by QRS morphology (RBBB or IVCD), QRS duration < or  $\geq$  150ms, PR interval < or  $\geq$  230 ms, QRS area < or  $\geq$  109  $\mu$ Vs, LVAT < or  $\geq$  125 ms, and the presence of fQRS. fQRS fragmented QRS, IVCD non-specific intraventricular conduction delay, LVAT left ventricular activation time, LVESV left ventricular end-systolic volume, RBBB right bundle branch block



REVERSE subanalyses seems to be better in IVCD patients than in RBBB patients (although non-significant). The results of the current study support these echocardiographic findings, showing significantly more benefit from CRT in IVCD than in RBBB patients.

The relation between QRS duration and CRT response has been shown in several studies [2, 4, 6]. However, there is only limited data on QRS duration in non-LBBB patients. Gold et al. [2] assessed the association of QRS duration with LVESV reduction in CRT patients grouped by QRS morphology. They failed to show a significant association; however non-LBBB patients in this study included a large group of narrow QRS patients (24% of 238 patients). A recent study by van der Bijl et al. [30] assessed echocardiographic remodelling in CRT defined by LVESDV and LVESV reduction and LVEF increase in wide QRS patients alone. They showed that in both LBBB and non-LBBB QRS morphology, increasing QRS duration is associated to increase remodelling in CRT. Similarly, in the current study, the group with QRS  $\geq$  150 ms demonstrated higher reduction in LVESV and improvement in LVEF.

Similarly to a recent retrospective study by Khidir et al. [31], the current study failed to demonstrate a significant survival benefit in patients with a QRS duration  $\geq$  150ms compared to those with a QRS duration < 150ms. The randomized RAFT population substudy by Birnie et al. [4] also showed that QRS duration has a continuous inverse relation with the hazard ratio for a composite clinical outcome of all-cause mortality or HF hospitalization in both LBBB and non-LBBB subgroups. However, the authors also suggest that a QRS duration cut off of 160 ms might be more appropriate in non-LBBB population. Moreover, as the multivariable regression analyses did not show QRS duration to be independently

associated, whereas QRS area and PR prolongation were, these parameters could turn out more valuable in the subgroup of non-LBBB patients.

#### 4.4 Fragmented QRS

Previous studies report contradicting results on the relation between fQRS and CRT response. Rickard et al. [32] evaluated 233 consecutive patients undergoing CRT implantation. This population consisted of almost 60% non-LBBB patients, with only 22% of patients demonstrating fragmented QRS. fQRS was not associated to echocardiographic remodelling or all-cause mortality. In contrast, Celikyurt et al. [12] prospectively evaluated 105 patients with HF undergoing CRT. They found that the number of leads with fQRS was a predictor of echocardiographic response to CRT (odds ratio: 0.61,  $p < 0.001$ ). In the current cohort, patients with fQRS on their baseline 12-lead ECG showed no significant differences in remodelling indices. However, these patients showed a significantly higher occurrence of the combined endpoint of death, cardiac transplantation, or LVAD implantation. The differences between aforementioned and current study may be explained by difficulties in defining fragmentation, as the differentiation of fragmentation and notching/slurring included in some LBBB definitions depends very much on the observer and filter and zoom-settings of the 12-lead ECG. Furthermore, the association is not independent from other electrocardiographic parameters evaluated in the current study and may therefore, especially in light of the variability in interpretation, not be the recommended option for stratification of patients.

## 4.5 LVAT

LVAT showed a significant association with response to CRT in previous studies including the general CRT population. Eitel et al. [11] evaluated 219 patients treated with CRT. The study included chronically right ventricular (RV) paced and non-paced patients. In the non-paced group, only 21% of patients had non-LBBB QRS morphology. They found  $LVAT \geq 125$  ms to be associated to death or cardiac transplantation in non-paced group. In contrast, there was no significant association with any of the outcomes in the current evaluation in non-LBBB patients. A reason for this difference may be that in non-LBBB patients, myocardial activation patterns by definition are significantly different than in LBBB patients [33, 34]. As many presume the transseptal activation related ‘notching’ to be hallmark feature of LBBB QRS morphology [16], this may exclude any value of this pattern and associated markers of the 12-lead ECG, like LVAT in non-LBBB patients.

## 4.6 Limitations

Because of the retrospective design of our study, the absence of the non-treated control group precludes the definite allocation of the differences found in this study to CRT. However, echocardiographic response is assessed using each patient as his/her own control. Furthermore, attrition bias may be present because of the incomplete data, specifically on echocardiographic outcomes. Prospective randomized controlled trials are needed to clarify the influence of QRS-area and PR-prolongation on CRT-response in non-LBBB patients.

## 4.7 Clinical implications

The results of this study may provide further aid in the very heterogeneous group of non-LBBB patients. As depicted by current guideline recommendation levels (IIa and IIb), currently we are not able to tell which non-LBBB patients benefit from CRT. Even though the study design makes it unsuited to address benefit from CRT in clinical parameters, it does show that additional ECG parameters separate patients with positive remodelling from those that show non-response, equally, or better than currently recommended QRS duration. The better separation of patients with good from poor clinical outcome could reflect either benefit from therapy or baseline risk of adverse events and is equally valuable in providing prognostic data. Further studies, or rather subanalyses of randomised trials, will be needed to address the value of these ECG parameters to select patients for CRT.

## 5 Conclusions

In the heterogeneous non-LBBB patient population, QRS area and PR prolongation rather than traditional QRS duration and morphology are associated to both clinical and echocardiographic outcomes of CRT. These 12-lead ECG markers may provide additional information in patient selection for non-LBBB patients.

Figure including normal 12-lead ECG on left and representative ECG-parameters evaluated in non-LBBB patients in the current study. ECG parameters included from upper-left to lower right box are (1) QRS morphology with example of lead V1 RSR pattern indicative of RBBB morphology, (2) QRS duration measurement, (3) PR interval measurement with evident PR prolongation in example, and (4) QRS area measurement with vector X-axis displayed. QRS area requiring area measurement in X-, Y- and Z-axis and calculation of total QRS area according to formula:  $(QRS\ area_x^2 + QRS\ area_y^2 + QRS\ area_z^2)^{1/2}$ , (5) fQRS assessment and (6) LVAT measurement from notch or slurring to end of the QRS complex. The 12-lead ECG is representative of the QRS duration, QRS area, and LVAT measurement

## References

- Zareba W, Klein H, Cygankiewicz I, Hall WJ, McNitt S, Brown M, et al. Effectiveness of cardiac resynchronization therapy by QRS morphology in the multicenter automatic defibrillator implantation Trial-Cardiac Resynchronization Therapy (MADIT-CRT). *Circulation*. 2011;123(10):1061–72. <https://doi.org/10.1161/CIRCULATIONAHA.110.960898>.
- Gold MR, Thebault C, Linde C, Abraham WT, Gerritse B, Ghio S, et al. Effect of QRS duration and morphology on cardiac resynchronization therapy outcomes in mild heart failure: results from the Resynchronization Reverses Remodeling in Systolic Left Ventricular Dysfunction (REVERSE) study. *Circulation*. 2012;126(7):822–9. <https://doi.org/10.1161/CIRCULATIONAHA.112.097709>.
- Bilchick KC. Does cardiac resynchronization therapy benefit patients with right bundle branch block: left ventricular free wall pacing: seldom right for right bundle branch block. *Circ Arrhythm Electrophysiol*. 2014;7(3):543–52. <https://doi.org/10.1161/CIRCEP.113.000747>.
- Birnie DH, Ha A, Higginson L, Sidhu K, Green M, Philippon F, et al. Impact of QRS morphology and duration on outcomes after cardiac resynchronization therapy: results from the Resynchronization-Defibrillation for Ambulatory Heart Failure Trial (RAFT). *Circ Heart Fail*. 2013;6(6):1190–8. <https://doi.org/10.1161/CIRCHEARTFAILURE.113.000380>.
- Ponikowski P, Voors AA, Anker SD, Bueno H, Cleland JG, Coats AJ, et al. 2016 ESC Guidelines for the diagnosis and treatment of acute and chronic heart failure: the task force for the diagnosis and treatment of acute and chronic heart failure of the European Society of Cardiology (ESC) developed with the special contribution of the Heart Failure Association (HFA) of the ESC. *Eur Heart J*. 2016;37(27):2129–200. <https://doi.org/10.1093/eurheartj/ehw128>.

6. Cleland JG, Abraham WT, Linde C, Gold MR, Young JB, Claude Daubert J, et al. An individual patient meta-analysis of five randomized trials assessing the effects of cardiac resynchronization therapy on morbidity and mortality in patients with symptomatic heart failure. *Eur Heart J*. 2013;34(46):3547–56. <https://doi.org/10.1093/eurheartj/eh290>.
7. Woods B, Hawkins N, Mealing S, Sutton A, Abraham WT, Beshai JF, et al. Individual patient data network meta-analysis of mortality effects of implantable cardiac devices. *Heart*. 2015;101(22):1800–6. <https://doi.org/10.1136/heartjnl-2015-307634>.
8. Kutyla V, Stockburger M, Daubert JP, Holmqvist F, Olshansky B, Schuger C, et al. PR interval identifies clinical response in patients with non-left bundle branch block: a multicenter automatic defibrillator implantation trial-cardiac resynchronization therapy substudy. *Circ Arrhythm Electrophysiol*. 2014;7(4):645–51. <https://doi.org/10.1161/CIRCEP.113.001299>.
9. Senfield J, Daubert C, Abraham WT, Ghio S, St John Sutton M, Cerkenvenik J et al. The impact of the PR interval in patients receiving cardiac resynchronization therapy: results from the REVERSE study. *JACC Clin Electrophysiol*. 2017;3(8):818–26. <https://doi.org/10.1016/j.jacep.2017.01.017>.
10. Mafi Rad M, Wijntjens GW, Engels EB, Blaauw Y, Luermans JG, Pison L, et al. Vectorcardiographic QRS area identifies delayed left ventricular lateral wall activation determined by electroanatomic mapping in candidates for cardiac resynchronization therapy. *Heart Rhythm*. 2016;13(1):217–25. <https://doi.org/10.1016/j.hrthm.2015.07.033>.
11. Eitel C, Wilton SB, Switzer N, Cowan K, Exner DV. Baseline delayed left ventricular activation predicts long-term clinical outcome in cardiac resynchronization therapy recipients. *Europace*. 2012;14(3):358–64. <https://doi.org/10.1093/europace/eur298>.
12. Celikyurt U, Agacdiken A, Sahin T, AlN, Kozdag G, Vural A, et al. Number of leads with fragmented QRS predicts response to cardiac resynchronization therapy. *Clin Cardiol*. 2013;36(1):36–9. <https://doi.org/10.1002/clc.22061>.
13. van Deursen CJ, Vernooij K, Dudink E, Bergfeldt L, Crijns HJ, Prinzen FW, et al. Vectorcardiographic QRS area as a novel predictor of response to cardiac resynchronization therapy. *J Electrocardiol*. 2015;48(1):45–52. <https://doi.org/10.1016/j.jelectrocard.2014.10.003>.
14. Brignole M, Auricchio A, Baron-Esquivias G, Bordachar P, Boriani G, Breithardt OA, et al. 2013 ESC Guidelines on cardiac pacing and cardiac resynchronization therapy: the Task Force on cardiac pacing and resynchronization therapy of the European Society of Cardiology (ESC). Developed in collaboration with the European Heart Rhythm Association (EHRA). *Eur Heart J*. 2013;34(29):2281–329. <https://doi.org/10.1093/eurheartj/eh2150>.
15. Dickstein K, Vardas PE, Auricchio A, Daubert JC, Linde C, McMurray J, et al. 2010 Focused Update of ESC Guidelines on device therapy in heart failure: an update of the 2008 ESC Guidelines for the diagnosis and treatment of acute and chronic heart failure and the 2007 ESC guidelines for cardiac and resynchronization therapy. Developed with the special contribution of the Heart Failure Association and the European Heart Rhythm Association. *Eur Heart J*. 2010;31(21):2677–87. <https://doi.org/10.1093/eurheartj/ehq337>.
16. Strauss DG, Selvester RH, Wagner GS. Defining left bundle branch block in the era of cardiac resynchronization therapy. *Am J Cardiol*. 2011;107(6):927–34. <https://doi.org/10.1016/j.amjcard.2010.11.010>.
17. Engels EB, Vegh EM, Van Deursen CJ, Vernooij K, Singh JP, Prinzen FW. T-wave area predicts response to cardiac resynchronization therapy in patients with left bundle branch block. *J Cardiovasc Electrophysiol*. 2015;26(2):176–83. <https://doi.org/10.1111/jce.12549>.
18. Engels EB, Alshehri S, van Deursen CJ, Wecke L, Bergfeldt L, Vernooij K, et al. The synthesized vectorcardiogram resembles the measured vectorcardiogram in patients with dyssynchronous heart failure. *J Electrocardiol*. 2015;48(4):586–92. <https://doi.org/10.1016/j.jelectrocard.2015.04.001>.
19. Kors JA, van Herpen G, Sittig AC, van Bommel JH. Reconstruction of the Frank vectorcardiogram from standard electrocardiographic leads: diagnostic comparison of different methods. *Eur Heart J*. 1990;11(12):1083–92.
20. van Stipdonk AMW, Ter Horst I, Kloosterman M, Engels EB, Rienstra M, Crijns H, et al. QRS Area Is a Strong Determinant of Outcome in Cardiac Resynchronization Therapy. *Circ Arrhythm Electrophysiol*. 2018;11(12):e006497. <https://doi.org/10.1161/CIRCEP.118.006497>.
21. Sweeney MO, van Bommel RJ, Schalij MJ, Borleffs CJ, Hellkamp AS, Bax JJ. Analysis of ventricular activation using surface electrocardiography to predict left ventricular reverse volumetric remodeling during cardiac resynchronization therapy. *Circulation*. 2010;121(5):626–34. <https://doi.org/10.1161/CIRCULATIONAHA.109.894774>.
22. Das MK, Suradi H, Maskoun W, Michael MA, Shen C, Peng J, et al. Fragmented wide QRS on a 12-lead ECG: a sign of myocardial scar and poor prognosis. *Circ Arrhythm Electrophysiol*. 2008;1(4):258–68. <https://doi.org/10.1161/CIRCEP.107.763284>.
23. Maass AH, Vernooij K, Wijers SC, van't Sant J, Cramer MJ, Meine M, et al. Refining success of cardiac resynchronization therapy using a simple score predicting the amount of reverse ventricular remodeling: results from the Markers and Response to CRT (MARC) study. *Europace*. 2018;20(2):e1–e10. <https://doi.org/10.1093/europace/euw445>.
24. Vegh EM, Engels EB, van Deursen CJ, Merkely B, Vernooij K, Singh JP, et al. T-wave area as biomarker of clinical response to cardiac resynchronization therapy. *Europace*. 2016;18(7):1077–85. <https://doi.org/10.1093/europace/euv259>.
25. Atwater BD, Emerek K, Sorensen PL, Hansen SM, Loring Z, Graft C, et al. PR Prolongation predicts inadequate resynchronization with biventricular pacing in left bundle branch block. *Pacing Clin Electrophysiol*. 2019;42(11):1477–85. <https://doi.org/10.1111/pace.13802>.
26. Salden F, Kutyla V, Stockburger M, Prinzen FW, Vernooij K. Atrioventricular dromotopathy: evidence for a distinctive entity in heart failure with prolonged PR interval? *Europace*. 2018;20(7):1067–77. <https://doi.org/10.1093/europace/eux207>.
27. Linde C, Abraham WT, Gold MR, St John Sutton M, Ghio S, Daubert C, et al. Randomized trial of cardiac resynchronization in mildly symptomatic heart failure patients and in asymptomatic patients with left ventricular dysfunction and previous heart failure symptoms. *J Am Coll Cardiol*. 2008;52(23):1834–43. <https://doi.org/10.1016/j.jacc.2008.08.027>.
28. Moss AJ, Hall WJ, Cannom DS, Klein H, Brown MW, Daubert JP, et al. Cardiac-resynchronization therapy for the prevention of heart-failure events. *N Engl J Med*. 2009;361(14):1329–38. <https://doi.org/10.1056/NEJMoa0906431>.
29. Tang AS, Wells GA, Talajic M, Arnold MO, Sheldon R, Connolly S, et al. Cardiac-resynchronization therapy for mild-to-moderate heart failure. *N Engl J Med*. 2010;363(25):2385–95. <https://doi.org/10.1056/NEJMoa1009540>.
30. van der Bijl P, Khidir M, Leung M, Mertens B, Ajmone Marsan N, Delgado V, et al. Impact of QRS complex duration and morphology on left ventricular reverse remodeling and left ventricular function improvement after cardiac resynchronization therapy. *Eur J Heart Fail*. 2017;19(9):1145–51. <https://doi.org/10.1002/ejhf.769>.
31. Khidir MJ, Delgado V, Ajmone Marsan N, Schalij MJ, Bax JJ. QRS duration versus morphology and survival after cardiac resynchronization therapy. *ESC Heart Fail*. 2017;4(1):23–30. <https://doi.org/10.1002/ehf2.12122>.

32. Rickard J, Zardkoohi O, Popovic Z, Verhaert D, Sraow D, Baranowski B, et al. QRS fragmentation is not associated with poor response to cardiac resynchronization therapy. *Ann Noninvasive Electrocardiol.* 2011;16(2):165–71. <https://doi.org/10.1111/j.1542-474X.2011.00424.x>.
33. Eschalier R, Ploux S, Ritter P, Haissaguerre M, Ellenbogen KA, Bordachar P. Nonspecific intraventricular conduction delay: Definitions, prognosis, and implications for cardiac resynchronization therapy. *Heart Rhythm.* 2015;12(5):1071–9. <https://doi.org/10.1016/j.hrthm.2015.01.023>.
34. Strik M, Regoli F, Auricchio A, Prinzen F. Electrical and mechanical ventricular activation during left bundle branch block and resynchronization. *J Cardiovasc Transl Res.* 2012;5(2):117–26. <https://doi.org/10.1007/s12265-012-9351-1>.

**Publisher's note** Springer Nature remains neutral with regard to jurisdictional claims in published maps and institutional affiliations.