

University of Groningen

Nutritional and metabolic aspects of the hepatorenal axis

Deetman, Petronella Elisabeth

IMPORTANT NOTE: You are advised to consult the publisher's version (publisher's PDF) if you wish to cite from it. Please check the document version below.

Document Version

Publisher's PDF, also known as Version of record

Publication date:

2015

[Link to publication in University of Groningen/UMCG research database](#)

Citation for published version (APA):

Deetman, P. E. (2015). *Nutritional and metabolic aspects of the hepatorenal axis*. [Thesis fully internal (DIV), University of Groningen]. University of Groningen.

Copyright

Other than for strictly personal use, it is not permitted to download or to forward/distribute the text or part of it without the consent of the author(s) and/or copyright holder(s), unless the work is under an open content license (like Creative Commons).

The publication may also be distributed here under the terms of Article 25fa of the Dutch Copyright Act, indicated by the "Taverne" license. More information can be found on the University of Groningen website: <https://www.rug.nl/library/open-access/self-archiving-pure/taverne-amendment>.

Take-down policy

If you believe that this document breaches copyright please contact us providing details, and we will remove access to the work immediately and investigate your claim.

Downloaded from the University of Groningen/UMCG research database (Pure): <http://www.rug.nl/research/portal>. For technical reasons the number of authors shown on this cover page is limited to 10 maximum.

3

PLASMA BILIRUBIN AND LATE GRAFT FAILURE IN RENAL TRANSPLANT RECIPIENTS

Petronella E. Deetman, Dorien M. Zelle, Jaap
J. Homan van der Heide, Gerjan J. Navis,
Reinold O.B. Gans, Stephan J.L. Bakker

Department of Medicine, Division of Nephrology,
University of Groningen, University Medical Center
Groningen, Groningen, the Netherlands

Transpl Int 2012;25(8):876–81

ABSTRACT

Background. Exogenous bilirubin has been shown to protect against oxidative stress in ischemia-reperfusion injury. Oxidative stress has been implicated in the pathophysiology of chronic transplant dysfunction leading to late graft failure after renal transplantation. We prospectively investigated whether high endogenous bilirubin is protective against development of late graft failure in renal transplant recipients (RTR).

Methods. Baseline data were collected between August 2001 and July 2003 in non-icteric outpatient RTR with a functioning graft for > 1 year. At baseline, bilirubin and liver enzymes were measured by routine assays on a Merck Mega analyzer. Graft failure was prospectively recorded until May 19 2009.

Results. During follow-up for 7.1 (6.2–7.2) years, 55 RTR developed graft failure. We found that circulating levels of bilirubin are inversely associated with late graft failure in RTR (HR = 0.29 [95% CI 0.16–0.52], $P < 0.001$). This association was independent of potential confounders, including creatinine clearance, urinary protein excretion, calcineurin inhibitors and gender (HR = 0.31 [95% CI 0.15–0.62] $P = 0.001$).

Conclusions. Our findings are consistent with a protective effect of increased endogenous bilirubin against development of late graft failure in RTR. If our findings are confirmed by other studies, intervention with endogenous or exogenous bilirubin may be of interest for long-term preservation of renal function in RTR.

INTRODUCTION

Short-term outcome of renal transplantation has improved impressively during the last decades (1). However, beyond one year after transplantation, outcome is still poor because many renal transplant recipients (RTR) experience a slow, but relentless decline in graft function (2–5). This will ultimately lead to graft failure, necessitating renewal of dialysis or re-transplantation (2–5). Frequently, the slow decline in graft function is not the consequence of immunological rejection, but an entity that is called chronic transplant dysfunction (3). The exact pathophysiology is not known, but oxidative stress has been implicated (6–9). Endogenous bilirubin is an established cytoprotectant and anti-oxidant (10–12). In experimental studies, it has been shown that exogenous bilirubin is protective against oxidative stress after ischemia-reperfusion injury in the kidney (13). It is, however, not known whether endogenous levels of bilirubin influence long term renal outcome in renal transplant recipients. Because oxidative stress has been implicated a detrimental role in the process of chronic transplant dysfunction (6–9), we hypothesized that high circulating bilirubin concentrations protect against late graft failure in RTR. We prospectively investigated this hypothesis a large single center cohort of RTR.

PATIENTS AND METHODS

STUDY POPULATION

To investigate whether high circulating bilirubin concentrations protect against late graft failure, we collected data in non-icteric outpatient RTR with a functioning graft for > 1 year. Baseline data were collected between August 2001 and July 2003 at a median of six years after transplantation. All 603 patients available for analysis signed written informed consent. Standard immunosuppressive therapy was given as described previously (14). Approval for this study has been obtained by the Institutional Review Board (METc 2001/039). Detailed explanation of this study has been published before (14–16).

LABORATORY ANALYSES

Creatinine clearance was assessed by the Jaffé method on a MEGA AU 510 (Merck Diagnostica, Darmstadt, Germany) and calculated using the Cockcroft-Gault formula. Concentration of total endogenous bilirubin was measured using the Bilirubin DPD method on an MEGA (Merck Diagnostica, Darmstadt, Germany). In our laboratory, a bilirubin concentration lower than 17 $\mu\text{mol/L}$ is considered normal.

Delayed graft function was defined as oliguria for more than 6 days. Allograft rejections were biopsy proven. To assess change in renal function over time, difference between creatinine clearance at baseline and latest creatinine clearance up to 4 years beyond baseline was calculated. All participating subjects visited the out-patient clinic at least once a year and creatinine clearance was assessed at every visit. Graft failure was defined as the return to dialysis or retransplantation and was censored for death. Graft failure and mortality of all RTR were prospectively recorded until May 19, 2009. There was no loss to follow-up.

STATISTICAL ANALYSES

Statistical calculations were performed using SPSS (version 18.0, SPSS inc. Chicago, IL). Total bilirubin concentration was divided into sex-stratified tertiles. Normally distributed data are given as mean \pm SD, whereas skewed distributed data are expressed as median (interquartile range), categorical distributed variables are given as number (percentage). Skewed variables were normalized using logarithmic transformation. Calculations have been made using ANOVA for normally distributed variables, Chi-square test for categorical distributed variables and a Kruskal Wallis test in the case of a skewed distribution. Initial survival analyses were performed according to Kaplan-Meier with log-rank testing. To determine whether bilirubin concentrations were independently associated with outcome, we subsequently performed cumulative adjustment for potential confounders in multivariate Cox-regression analyses. A probability value of <0.05 was considered significant.

RESULTS

In 603 RTR (age 51 ± 12 years, 55% men), median (IQR) baseline bilirubin concentration was 17 (14–21) $\mu\text{mol/L}$. Bilirubin concentration was significantly higher in men than in women ($P < 0.001$). In women, median bilirubin concentration was 16 (13–20) $\mu\text{mol/L}$. In men, median bilirubin concentration was 18 (15–23) $\mu\text{mol/L}$. In 318 (53%) RTR bilirubin concentration was above the range considered normal for the general population. However, none of the included RTR was icteric or suffered from severe liver disease. Median time between transplantation and baseline measurements was 6.0 (2.6–11.4) years. In Table 1, recipient and donor characteristics are shown according to sex-stratified tertiles of bilirubin concentration. Bilirubin was inversely associated with use of ACE inhibitors or angiotensin II antagonists, cerebrovascular accidents, HbA1c, serum creatinine and urinary protein and sodium excretion. Bilirubin was positively associated with ASAT, ALAT and use of calcineurin inhibitors.

Decline in serum creatinine clearance was least pronounced in RTR with highest bilirubin concentrations (Figure 1, $P < 0.001$). In line with this observation, graft failure was less frequent in RTR with high bilirubin concentrations than in RTR with lower bilirubin concentrations, with frequencies of 16, 10 and 2% in the respective tertiles after a median follow-up of 6.9 (6.1–7.4) years (log-rank $P < 0.001$). A Kaplan-Meier analysis of graft failure is shown in Figure 2A. Estimated 5-year graft survival was 88% in the first, 92% in the second and 98.5% in the third tertile of bilirubin distribution. Mortality rates were similar in all three tertiles (log-rank $P = 0.70$). A Kaplan-Meier analysis of mortality is shown in Figure 2B. Estimated 5-year patient survival was 84% in the three tertiles of bilirubin distribution.

Table 1. Demographic characteristics according to sex-stratified tertiles of bilirubin.

	Tertiles of serum bilirubin concentration			P-value
	I	II	III	
N	181	218	204	
Men, n (%)	101 (56)	116 (53)	113 (55)	
Serum bilirubin ($\mu\text{mol/L}$)	13 (6–15)	17 (16–20)	25 (21–62)	
Women, n (%)	80 (44)	102 (47)	91 (45)	
Serum bilirubin ($\mu\text{mol/L}$)	12 (7–13)	15 (14–18)	22 (19–47)	
Recipient demographics				
Age (yr)	49.8 \pm 11.4	51.9 \pm 12	52.3 \pm 12.7	0.10
Body composition				
BMI (kg/m^2)	25.8 \pm 4.1	25.8 \pm 4.2	25.4 \pm 4.6	0.51
Waist circumference (cm)	96.7 \pm 13.5	97.6 \pm 13.5	97.1 \pm 14.2	0.78
Smoking status				0.08
Non-smoker, n (%)	47 (26)	77 (36)	91 (45)	
Current smoker, n (%)	63 (35)	44 (20)	25 (12)	
Ex-smoker, n (%)	10 (39)	97 (45)	87 (43)	
Blood pressure				
Systolic (mmHg)	151.0 \pm 22.1	156 \pm 25.9	151.5 \pm 19.4	0.06
Diastolic (mmHg)	89.6 \pm 10.2	89.7 \pm 9.9	90.4 \pm 9.6	0.72
Use of ACE-I or ARB, n (%)	78 (43)	78 (43)	50 (25)	0.001
Number of antihypertensives	1.9 \pm 1.1	2.0 \pm 1.2	1.8 \pm 1.1	0.08
Lipids				
Total cholesterol (mmol/L)	5.6 \pm 1.2	5.6 \pm 1.1	5.6 \pm 0.9	0.88
HDL (mmol/L)	1.1 \pm 0.3	1.1 \pm 0.3	1.1 \pm 0.3	0.30
LDL (mmol/L)	3.5 \pm 1.1	3.6 \pm 1.0	3.5 \pm 0.9	0.80
Triglycerides (mmol/L)	2.2 \pm 1.3	2.2 \pm 1.2	2.1 \pm 1.2	0.74
Use of statins, n (%)	88 (49)	106 (49)	105 (52)	0.80

Table 1. (continued)

	Tertiles of serum bilirubin concentration			P-value
	I	II	III	
Diabetes Mellitus				
Insulin (μ U/ml)	13.6 (8.6–16.3)	10.9 (7.8–16.9)	10.8 (7.7–14.8)	0.26
Glucose (mmol/L)	4.7 (4.2–5.1)	4.5 (4.1–5)	4.5 (4–4.9)	0.30
Diabetes after Tx, n (%)	31 (17)	38 (17)	37 (18)	0.96
Use of antidiabetic drugs, n (%)	26 (14)	29 (13)	24 (12)	0.75
CRP (mg/L)	2.7 (0.8–6.5)	2.1 (0.9–4.6)	1.8 (0.7–4.0)	0.15
Liver function				
ASAT (U/L)	21 (17–25)	22 (19–27)	24 (20–29)	<0.001
ALAT (U/L)	17 (13–23)	19 (14–25)	18 (15–25)	0.01
Alkaline phosphatase (U/L)	72 (57–90)	75 (58–98)	71 (56–94)	0.34
Gamma glutamyl transferase (U/L)	23 (16–36)	25 (17–40)	24 (18–41)	0.27
CMV status				
CMV seropositivity, n (%)	119 (66)	165 (76)	146 (72)	0.09
Donor demographics				
Age (yr)	38 (16)	37 (15)	36 (15)	0.51
Men, n (%)	98 (54)	122 (56)	107 (53)	0.80
Number of HLA mismatches,	2 (1–2.5)	2 (0–3)	2 (1–3)	0.79
Time between Tx and baseline (yr)	6.1 (3–12)	5.6 (3–12)	5.9 (3–11)	0.38
Dialysis duration prior to Tx (mo)	26 (14–47)	27 (15–49)	28 (11–51)	0.40
Renal allograft function				
Serum creatinine (μ mol/L)	141 (112–178)	136 (113–165)	128 (112–149)	0.009
Creatinine clearance (ml/min)	60.1 \pm 23.1	62.5 \pm 22.9	63.4 \pm 21.5	0.34
Urinary protein excretion (g/24h)	0.3 (0.1–0.6)	0.2 (0.0–0.5)	0.2 (0.0–0.4)	<0.001
Transplantation type				
Postmortem donor, n (%)	149 (82)	189 (87)	183 (90)	0.11
Living donor, n (%)	32 (18)	29 (13)	21 (10)	0.11
Acute rejection, n (%)	92 (51)	86 (39)	93 (46)	0.07
Delayed graft function, n (%)	28 (16)	25 (12)	22 (11)	0.36
Immunosuppression				
Prednisolon dose (mg)	10 (7.5–10)	10 (7.5–10)	10 (7.5–10)	0.75
Use of calcineurin inhibitor, n (%)	122 (67)	177 (81)	174 (85)	<0.001
Use of ciclosporin, n (%)	83 (46)	147 (67)	158 (77)	<0.001
Use of tacrolimus, n (%)	39 (22)	30 (14)	16 (8)	0.001
Use of proliferation inhibitor, n (%)	143 (79)	160 (73)	142 (70)	0.11

Normally distributed data are given as mean \pm SD, skewed distributed data as median (interquartile range) and categorical distributed variables as number (percentage). BMI, body mass index; ACEi, ACE inhibitor; ARB, angiotensin receptor blocker; CRP, C-reactive protein; ASAT, aspartate aminotransferase; ALAT, alanine aminotransferase; CMV, Cytomegalovirus; Tx, Transplantation.

Table 2. Cox regression analyses for late graft failure in RTR in sex-stratified tertiles of bilirubin concentration.

	Graft failure	
	HR (95% CI)	P-value
Model 1	0.29 (0.16–0.52)	<0.001
Model 2	0.28 (0.15–0.51)	<0.001
Model 3	0.33 (0.18–0.61)	<0.001
Model 4	0.32 (0.17–0.61)	0.001
Model 5	0.35 (0.18–0.67)	0.001
Model 6	0.31 (0.15–0.62)	0.001

Hazard ratios per 10 µmol/L change in bilirubin concentration

Model 1: crude association for bilirubin

Model 2: Model 1 + adjustments for age and sex

Model 3: Model 2 + adjustments for creatinine clearance and urinary protein excretion

Model 4: Model 3 + adjustments for use of calcineurin inhibitor, use of ARB or ACEi, number of antihypertensives

Model 5: Model 4 + adjustments for AST, ALT

Model 6: Model 5 + adjustments for CMV seropositivity, smoking status, systolic blood pressure, acute rejection

ARB, angiotensin receptor blocker; ACEi, ACE inhibitor; AST, aspartate aminotransferase; ALT, alanine aminotransferase; CMV, cytomegalovirus.

In Cox-regression analyses for bilirubin as a continuous variable, the inverse association of bilirubin concentration with late graft failure was confirmed, with a hazard ratio (HR) of 0.29 (95% CI 0.16–0.52), $P < 0.001$ for the unadjusted analysis (Table 2). After cumulative adjustment in multivariate analyses, this association appeared independent of potential confounders, including creatinine clearance, urinary protein excretion, use of calcineurin inhibitors and gender, with a HR of 0.31 (95% CI 0.15–0.62), $P = 0.001$ for the final model.

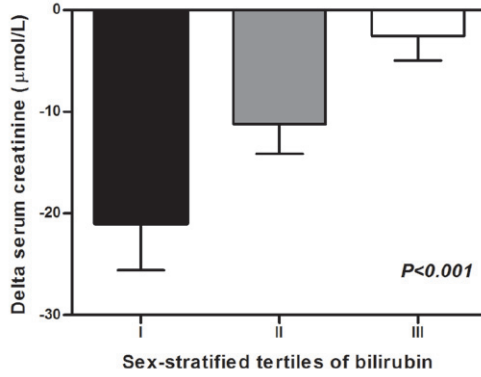


Figure 1. Changes in creatinine clearance (mean \pm SEM) between baseline and follow-up according to sex-stratified tertiles of serum bilirubin. Differences between groups were tested with Kruskal Wallis test.

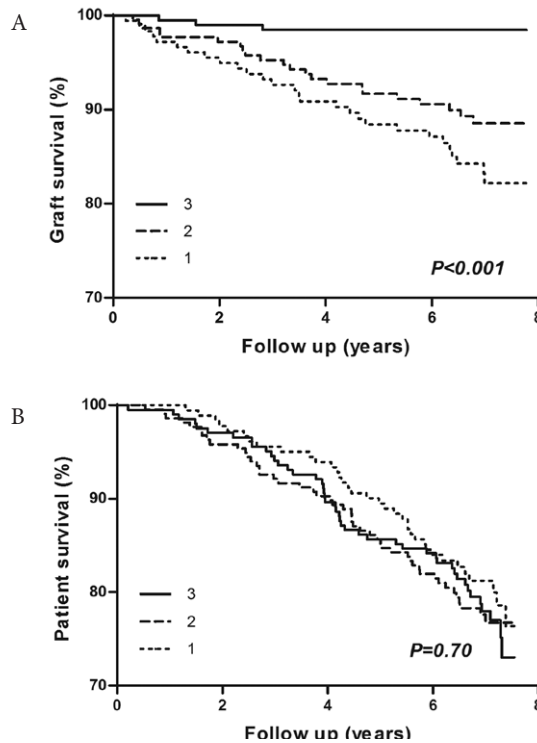


Figure 2. Kaplan-Meier curves for graft failure (A; $P < 0.001$) and mortality (B; $P = 0.70$) according to sex-stratified tertiles of bilirubin (I-III).

DISCUSSION

In this prospective study we investigated whether endogenous bilirubin assessed in stable, outpatient RTR at more than 1 year after transplantation is associated with subsequent development of late graft failure. We found that relatively high circulating levels of bilirubin are independently associated with low risk of late graft failure in RTR.

Oxidative stress is important in the pathophysiology of chronic transplant dysfunction (6–9). Chronic transplant dysfunction is the leading cause of a slow, but progressive decline in renal allograft function (3). It is thought that chronic transplant dysfunction is usually not the result of immunological rejection, but of a constant ‘response to injury’ due to a combination of several immunological and non-immunological insults (3,17). In the first year after transplantation, transplant dysfunction is predominantly caused by immunological factors (14), whereas after one year chronic transplant dysfunction is mainly attributed to non-immunological risk factors, with many aspects of the pathophysiology shared with diabetic nephropathy (14). Recent studies suggest a protective effect of relatively high levels of bilirubin against risks imposed by such non-immunological risk factors. One is a study in which bilirubin was inversely associated with dyslipidemia in patients with metabolic syndrome (18). The other study indicated that bilirubin may protect against progression of diabetic nephropathy (19), showing that bilirubin significantly inhibited reactive oxygen species production in human renal mesangial cells (19). In line, diabetic hyperbilirubinemic rats did not develop renal mesangial expansion, a typical feature in diabetic nephropathy. Furthermore, Adin et al. showed that exogenous bilirubin protected against kidney ischemia reperfusion injury (13).

Accumulating evidence has shown that higher bilirubin levels are associated with low prevalence of death and disease as high serum bilirubin levels were suggested to be protective against coronary artery disease (20), cancer mortality (21) and colorectal cancer (22). But to our knowledge we are the first to report that relatively high circulating levels of bilirubin are associated with low risk of late graft failure in RTR. In line with this association, we found that the decline in creatinine clearance was least pronounced in RTR with highest bilirubin concentrations.

Accumulating evidence implicates bilirubin as a powerful anti-oxidant (10,23,24). Bilirubin has been shown to protect against kidney ischemia/reperfusion injury in rats (13). It has also been shown that bilirubin might modulate immunological factors (23,25). High concentrations of biliverdin, a precursor of bilirubin, downregulate several inflammatory pathways, hereby inducing tolerance to cardiac allografts in mice (25). Protective effects in organ transplantation may include anti-inflammatory, anti-apoptotic and anti-proliferative properties (23). Thus, it may not only be non-immunological anti-oxidative effects of bilirubin that explain our findings, but also effects that involve modulation of the immune system, with less pronounced chronic rejection in subjects with higher circulating concentrations of bilirubin.

This study has some limitations. Despite the fact that bilirubin has been implicated as protective against ischemia-reperfusion injury (13), we found no association of circulating bilirubin concentrations with occurrence of delayed graft function. It should, however, be realized that our study was designed to prospectively investigate the hypothesis that circulating endogenous bilirubin concentrations are associated with late graft failure and that assessment of bilirubin for our study was performed 1 year or more after transplantation. A prospective study of a potential association with occurrence of delayed graft function would have required assessment of pre- or peri-operative concentrations of bilirubin. We found that bilirubin concentrations above what is considered normal for the general population are quite common late after transplantation. This may indicate preferential occurrence of delayed graft failure and early graft failure in RTR with constitutently low bilirubin concentrations. In future studies it would therefore be interesting to investigate the potential association of bilirubin concentrations assessed in the pre- or peri-operative phase with occurrence of delayed graft function and early graft failure. We did not record data on extended criteria donors, but such donor data, known to influence occurrence of delayed graft function of recipient characteristics would be important to be recorded to allow for adjustment as potential confounders in multivariate analyses in such studies. Other limitations are that this study was set up as a single center study, so differences with other centers have not been assessed. Also, RTR patients were included at different time points after transplantation (2001–2003), which might have caused healthy survivor bias. Another limitation is that we have no repeated measurements of bilirubin concentrations. Most epidemiological studies use a single baseline measurement to predict outcomes, which adversely affects predictive properties of variables associated with outcomes. If intra-individual variability of predictive parameters is taken into account, this results in much stronger relations with outcomes (26,27). A particular strength of this study is that there was no loss to follow-up.

In conclusion, our study suggests a protective effect of endogenous bilirubin against development of graft failure in RTR, hereby implying its potential role as an anti-oxidant. If our findings are confirmed by other studies, and a mechanistic role supported, intervention with exogenous bilirubin may be of interest for long-term preservation of renal function in RTR. Given the results of our study, and particularly because we found relatively high bilirubin concentrations in RTR with preserved graft function until relatively late after transplantation, it would also be of interest to address in future studies whether pre- or peri-operative bilirubin concentrations or bilirubin concentrations shortly after transplantation would be associated with delayed graft function or early graft loss.

ACKNOWLEDGEMENTS

This work was supported by the Dutch Kidney Foundation, Nierstichting Nederland (C00.1877).

REFERENCES

1. Merville P. Combating chronic renal allograft dysfunction : optimal immunosuppressive regimens. *Drugs* 2005;65(5):615–631.
2. Meier-Kriesche HU, Schold JD, Kaplan B. Long-term renal allograft survival: have we made significant progress or is it time to rethink our analytic and therapeutic strategies? *Am J Transplant* 2004 Aug;4(8):1289–1295.
3. Paul LC. Chronic allograft nephropathy: An update. *Kidney Int* 1999 Sep;56(3):783–793.
4. Meier-Kriesche HU, Schold JD, Srinivas TR, Kaplan B. Lack of improvement in renal allograft survival despite a marked decrease in acute rejection rates over the most recent era. *Am J Transplant* 2004 Mar;4(3):378–383.
5. Sayegh MH, Carpenter CB. Transplantation 50 years later--progress, challenges, and promises. *N Engl J Med* 2004 Dec 23;351(26):2761–2766.
6. Kim J, Seok YM, Jung KJ, Park KM. Reactive oxygen species/oxidative stress contributes to progression of kidney fibrosis following transient ischemic injury in mice. *Am J Physiol Renal Physiol* 2009 Aug;297(2):F461–70.
7. Djamali A, Sadowski EA, Muehrer RJ, Reese S, Smavatkul C, Vidyasagar A, et al. BOLD-MRI assessment of intrarenal oxygenation and oxidative stress in patients with chronic kidney disease and allograft dysfunction. *Am J Physiol Renal Physiol* 2007 Feb;292(2):F513–22.
8. Raj DS, Lim G, Levi M, Qualls C, Jain SK. Advanced glycation end products and oxidative stress are increased in chronic allograft nephropathy. *Am J Kidney Dis* 2004 Jan;43(1):154–160.
9. Albrecht EW, Stegeman CA, Tiebosch AT, Tegzess AM, van Goor H. Expression of inducible and endothelial nitric oxide synthases, formation of peroxynitrite and reactive oxygen species in human chronic renal transplant failure. *Am J Transplant* 2002 May;2(5):448–453.
10. Abraham NG, Asija A, Drummond G, Peterson S. Heme oxygenase -1 gene therapy: recent advances and therapeutic applications. *Curr Gene Ther* 2007 Apr;7(2):89–108.
11. Duann P, Lianos EA. GEC-targeted HO-1 expression reduces proteinuria in glomerular immune injury. *Am J Physiol Renal Physiol* 2009 Sep;297(3):F629–38.
12. Baranano DE, Rao M, Ferris CD, Snyder SH. Biliverdin reductase: a major physiologic cytoprotectant. *Proc Natl Acad Sci U S A* 2002 Dec 10;99(25):16093–16098.
13. Adin CA, Croker BP, Agarwal A. Protective effects of exogenous bilirubin on ischemia-reperfusion injury in the isolated, perfused rat kidney. *Am J Physiol Renal Physiol* 2005 Apr;288(4):F778–84.

14. de Vries AP, Bakker SJ, van Son WJ, van der Heide JJ, Ploeg RJ, The HT, et al. Metabolic syndrome is associated with impaired long-term renal allograft function; not all component criteria contribute equally. *Am J Transplant* 2004 Oct;4(10):1675–1683.
15. van Ree RM, de Vries AP, Oterdoom LH, Seelen MA, Gansevoort RT, Schouten JP, et al. Plasma procalcitonin is an independent predictor of graft failure late after renal transplantation. *Transplantation* 2009 Jul 27;88(2):279–287.
16. van Ree RM, Oterdoom LH, de Vries AP, Gansevoort RT, van der Heide JJ, van Son WJ, et al. Elevated levels of C-reactive protein independently predict accelerated deterioration of graft function in renal transplant recipients. *Nephrol Dial Transplant* 2007 Jan;22(1):246–253.
17. Massy ZA, Guijarro C, Wiederkehr MR, Ma JZ, Kasiske BL. Chronic renal allograft rejection: immunologic and nonimmunologic risk factors. *Kidney Int* 1996 Feb;49(2):518–524.
18. Giral P, Ratziu V, Couvert P, Carrie A, Kontush A, Girerd X, et al. Plasma bilirubin and gamma-glutamyltransferase activity are inversely related in dyslipidemic patients with metabolic syndrome: relevance to oxidative stress. *Atherosclerosis* 2010 Jun;210(2):607–613.
19. Fujii M, Inoguchi T, Sasaki S, Maeda Y, Zheng J, Kobayashi K, et al. Bilirubin and biliverdin protect rodents against diabetic nephropathy by downregulating NAD(P)H oxidase. *Kidney Int* 2010 Aug 4.
20. Schwertner HA, Jackson WG, Tolan G. Association of low serum concentration of bilirubin with increased risk of coronary artery disease. *Clin Chem* 1994 Jan;40(1):18–23.
21. Temme EH, Zhang J, Schouten EG, Kesteloot H. Serum bilirubin and 10-year mortality risk in a Belgian population. *Cancer Causes Control* 2001 Dec;12(10):887–894.
22. Zucker SD, Horn PS, Sherman KE. Serum bilirubin levels in the U.S. population: gender effect and inverse correlation with colorectal cancer. *Hepatology* 2004 Oct;40(4):827–835.
23. Ollinger R, Wang H, Yamashita K, Wegiel B, Thomas M, Margreiter R, et al. Therapeutic applications of bilirubin and biliverdin in transplantation. *Antioxid Redox Signal* 2007 Dec;9(12):2175–2185.
24. Ryter SW, Tyrrell RM. The heme synthesis and degradation pathways: role in oxidant sensitivity. Heme oxygenase has both pro- and antioxidant properties. *Free Radic Biol Med* 2000 Jan 15;28(2):289–309.
25. Yamashita K, McDaid J, Ollinger R, Tsui TY, Berberat PO, Usheva A, et al. Biliverdin, a natural product of heme catabolism, induces tolerance to cardiac allografts. *FASEB J* 2004 Apr;18(6):765–767.
26. Danesh J, Wheeler JG, Hirschfield GM, Eda S, Eiriksdottir G, Rumley A, et al. C-reactive protein and other circulating markers of inflammation in the prediction of coronary heart disease. *N Engl J Med* 2004 Apr 1;350(14):1387–1397.
27. Koenig W, Sund M, Frohlich M, Lowel H, Hutchinson WL, Pepys MB. Refinement of the association of serum C-reactive protein concentration and coronary heart disease risk by correction for within-subject variation over time: the MONICA Augsburg studies, 1984 and 1987. *Am J Epidemiol* 2003 Aug 15;158(4):357–364.