

University of Groningen

## Tracer-specific PET and SPECT templates for automatic co-registration of functional rat brain images

Vállez Garcia, David; Schwarz, Adam J; Dierckx, Rudi; Koole, Michel; Doorduyn, Janine

DOI:  
[10.13140/2.1.1179.3286](https://doi.org/10.13140/2.1.1179.3286)

**IMPORTANT NOTE:** You are advised to consult the publisher's version (publisher's PDF) if you wish to cite from it. Please check the document version below.

*Document Version*  
Final author's version (accepted by publisher, after peer review)

*Publication date:*  
2014

[Link to publication in University of Groningen/UMCG research database](#)

*Citation for published version (APA):*

Vállez García, D., Schwarz, A. J., Dierckx, R., Koole, M., & Doorduyn, J. (2014). *Tracer-specific PET and SPECT templates for automatic co-registration of functional rat brain images*. Abstract from 10th International Symposium on Functional NeuroReceptor Mapping of the Living Brain, Egmond aan Zee, Netherlands. <https://doi.org/10.13140/2.1.1179.3286>

### Copyright

Other than for strictly personal use, it is not permitted to download or to forward/distribute the text or part of it without the consent of the author(s) and/or copyright holder(s), unless the work is under an open content license (like Creative Commons).

The publication may also be distributed here under the terms of Article 25fa of the Dutch Copyright Act, indicated by the "Taverne" license. More information can be found on the University of Groningen website: <https://www.rug.nl/library/open-access/self-archiving-pure/taverne-amendment>.

### Take-down policy

If you believe that this document breaches copyright please contact us providing details, and we will remove access to the work immediately and investigate your claim.

Downloaded from the University of Groningen/UMCG research database (Pure): <http://www.rug.nl/research/portal>. For technical reasons the number of authors shown on this cover page is limited to 10 maximum.

# Tracer-specific PET and SPECT templates for automatic co-registration of functional rat brain images

Vállez García D<sup>1</sup>, Schwarz AJ<sup>2</sup>, Dierckx RAJO<sup>1</sup>, Koole M<sup>1</sup>, Doorduyn J<sup>1</sup>  
 email: j.doorduyn@umcg.nl

<sup>1</sup> Department of Nuclear Medicine and Molecular Imaging, University of Groningen, University Medical Center Groningen, Groningen, The Netherlands  
<sup>2</sup> Department of Psychological and Brain Sciences, Indiana University, Bloomington, USA

## OBJECTIVE

Construction of tracer-specific PET and SPECT rat brain templates for automatic co-registration, spatially aligned with Paxinos space.

## INTRODUCTION

Template based spatial co-registration of PET and SPECT data is an important first step in its semi-automatic processing, facilitating VOI- and voxel-based analysis. Although this procedure is standard in human, using corresponding MRI images, these systems are often not accessible for preclinical research. Alternatively, manual co-registration of images to a MRI template is frequently performed. However, this is operator dependent and can introduce bias. Therefore, we constructed several tracer-specific PET and SPECT rat brain templates for automatic co-registration, which were evaluated in a rat model of multiple sclerosis.

## MATERIALS AND METHODS

**PET imaging** Animals: Male Sprague-Dawley rats (8-10 weeks; 267-337 g)  
 Scanner: microPET Focus 220 (Siemens, Inc.)  
 Static scan: <sup>18</sup>F-FDG (20-30 MBq) i.p.; <sup>11</sup>C-PK11195 (50-60 MBq) i.v.  
 Dynamic scan: <sup>11</sup>C-MeDAS (50-60 MBq) i.v.  
 Reconstruction: OSEM2D, 4 iterations, 16 subsets

**SPECT imaging** Animals: Healthy male Wistar rats (8-10 weeks; 255-280 g)  
 Scanner: U-SPECT-II (MILabs, The Netherlands)  
 Static scan: <sup>99m</sup>Tc-HMPAO (45-60 MBq)  
 Reconstruction: POSEM, 6 iterations, 16 subsets

**Template construction (A)** Symmetrical left-right templates by averaging the scans

PET: <sup>18</sup>F-FDG (n=9), <sup>11</sup>C-PK11195 (n=10), and <sup>11</sup>C-MeDAS (n=8)  
 SPECT: <sup>99m</sup>Tc-HMPAO (n=7)

**Cost function within modality** Minimizing the sum of squared differences (affine transformation)  
**Cost function template-to-MRI** Normalized mutual information maximization

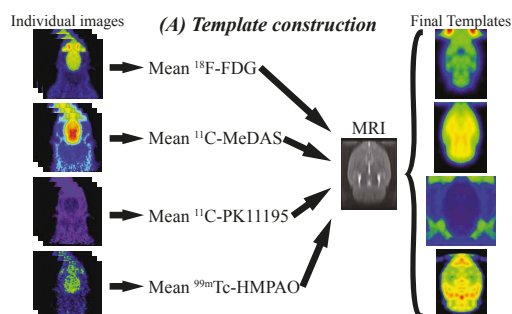
**Validation** Rat model of multiple sclerosis (MS)

1% lysocleithin (or control saline) in the right corpus callosum and striatum  
<sup>18</sup>F-FDG and <sup>11</sup>C-PK11195: 3 days after injection  
<sup>11</sup>C-MeDAS: 7 days after injection

**General statistics (B)** Inter-subject variability, and right-to-left asymmetry

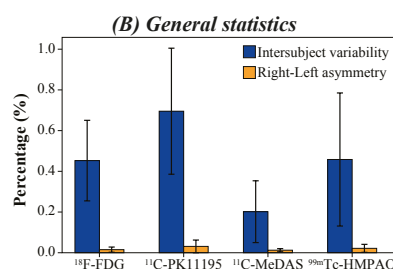
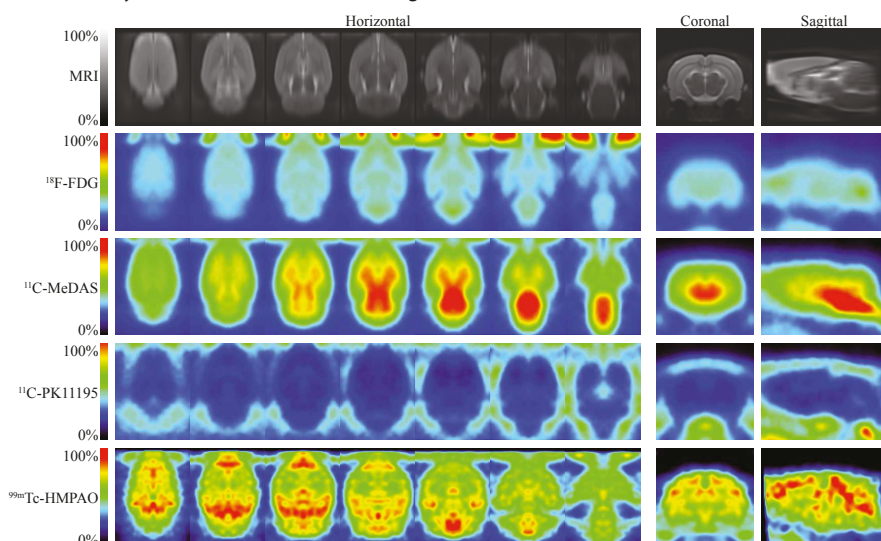
**Registration accuracy** Random misalignments (translation, rotation, stretching, and combination)

**Voxel-based analysis (C)** Statistical Parametric Mapping (SPM)

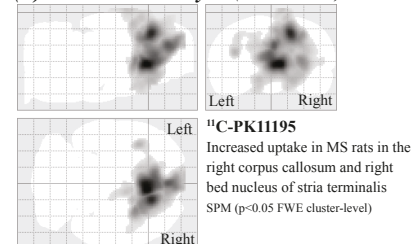


## RESULTS

The obtained mean registration errors were 0.097–1.277mm for PET, and 0.059–0.477mm for SPECT. These values are below spatial resolution of the cameras (1.4mm and 0.8mm, respectively) and in agreement with human literature [3]. Results from voxel-based analyses correspond with those previously reported using VOI-based analysis [4], and correlate with the regions where lesion was induced.



**(C) Voxel-based analysis (MS vs. control)**



## CONCLUSION

The constructed tracer-specific templates allow accurate registration of functional rat brain data, using automatic normalization algorithms available in standard packages (e.g., SPM, FSL), supporting either VOI- or voxel-based analysis. The templates will be made freely available for the research community.

## References

[1] A J Schwarz, et al. *Neuroimage*, 2006, 32:538 [2] C Casteels, et al. *J. Nucl. Med.*, 2006, 47:1858 [3] C P Karger, et al. *Phys. Med. Biol.*, 2003, 48:211 [4] D de Paula Faria, et al. *Mult. Scler.*, 2014, (ahead of print)

**Tracer-specific PET and SPECT templates for automatic co-registration of functional rat brain images**D. Vázquez García<sup>1</sup>, A. J. Schwarz<sup>2</sup>, M. Koole<sup>1</sup>, J. Doorduyn<sup>1</sup><sup>1</sup>University Medical Center Groningen, GRONINGEN, The Netherlands, <sup>2</sup>Department of Psychological and Brain Sciences, Indiana University, BLOOMINGTON, United States of America

**Objectives:** Template based spatial co-registration of PET and SPECT data is an important first step in its semi-automatic processing, facilitating VOI- and voxel-based analysis. Although this procedure is standard in human, using corresponding MRI images, these systems are often not accessible for preclinical research. Alternatively, manual co-registration of images to a MRI template is often performed. However, this is operator dependent and can introduce bias.

Therefore, we constructed several tracer-specific PET and SPECT rat brain templates for automatic co-registration, spatially aligned with a widely used MRI-based template in Paxinos stereotactic space [1].

**Methods:** PET (<sup>18</sup>F-FDG, <sup>11</sup>C-PK11195, and <sup>11</sup>C-MeDAS) and SPECT (<sup>99m</sup>Tc-HMPAO) brain scans were acquired from healthy male Sprague-Dawley and Wistar rats. Symmetrical left-right templates were constructed by averaging the scans. Within-modality registration was performed by minimizing the sum of squared difference and template to MRI registration by normalized mutual information maximization algorithm.

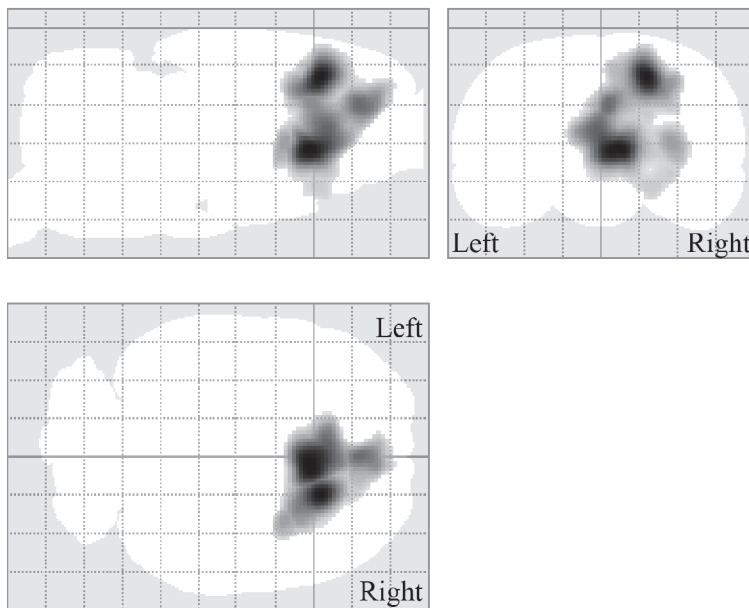
For validation purposes, PET scans were acquired from a rat model of multiple sclerosis (MS) where focal demyelination was induced by injection of lysolecithin (or control saline) in right corpus callosum and striatum. Parametric SUV images were created for automatic co-registration.

The validity of the templates was assessed by estimation of registration accuracy errors, inter-subject variability, right-to-left asymmetry indices, and voxel-based analysis of the MS model [2].

**Results:** The obtained mean registration errors were 0.097-1.277mm for PET, and 0.059-0.477mm for SPECT. These values are below spatial resolution of the cameras (1.4mm and 0.8mm, respectively) and in agreement with human literature [3]. Results from voxel-based analyses (Figure 1) correspond with those previously reported using VOI-based analysis [4], and correlate with the regions where lesion was induced.

**Conclusion:** The constructed tracer-specific templates allow accurate registration of functional rat brain data, using automatic normalization algorithms available in standard packages (e.g., SPM, FSL), supporting either VOI- or voxel-based analysis. The templates will be made freely available for the research community.

**References:** [1] A J Schwarz, et al. *Neuroimage*, 2006, 32:538. [2] C Casteels, et al. *J. Nucl. Med.*, 2006, 47:1858 [3] C P Karger, et al. *Phys. Med. Biol.*, 2003, 48:211. [4] D de Paula Faria, et al. (submitted).



**Figure 1.** Voxel-based analysis performed in SPM8:

A statistically significant ( $p < 0.001$  unc.;  $T = 4.14$ ) increased uptake of <sup>11</sup>C-PK11195 was found in the group with the focal demyelinating lesion, compared with control animals. These regions correspond with the right corpus callosum and the right stria terminallis.