

University of Groningen

Bacterial fingerprints across Europe

Glasner, Corinna

IMPORTANT NOTE: You are advised to consult the publisher's version (publisher's PDF) if you wish to cite from it. Please check the document version below.

Document Version

Publisher's PDF, also known as Version of record

Publication date:
2014

[Link to publication in University of Groningen/UMCG research database](#)

Citation for published version (APA):

Glasner, C. (2014). *Bacterial fingerprints across Europe*. [Thesis fully internal (DIV), University of Groningen]. [S.n.].

Copyright

Other than for strictly personal use, it is not permitted to download or to forward/distribute the text or part of it without the consent of the author(s) and/or copyright holder(s), unless the work is under an open content license (like Creative Commons).

The publication may also be distributed here under the terms of Article 25fa of the Dutch Copyright Act, indicated by the "Taverne" license. More information can be found on the University of Groningen website: <https://www.rug.nl/library/open-access/self-archiving-pure/taverne-amendment>.

Take-down policy

If you believe that this document breaches copyright please contact us providing details, and we will remove access to the work immediately and investigate your claim.

Downloaded from the University of Groningen/UMCG research database (Pure): <http://www.rug.nl/research/portal>. For technical reasons the number of authors shown on this cover page is limited to 10 maximum.

CHAPTER 3

High-resolution typing by MLVF unveils extensive heterogeneity of European livestock-associated methicillin-resistant *Staphylococcus aureus* isolates with the sequence type 398

Corinna Glasner, Artur J. Sabat, Monika A. Chlebowicz, Wannes Vanderhaeghen, Alexandra Fetsch, Beatriz Guerra, Helen Huber, Roger Stephan, Carmen Torres, Patrick Butaye, Andreas Voss, Mireille Wulf and Jan Maarten van Dijl

ABSTRACT

Methicillin-resistant *Staphylococcus aureus* sequence type 398 (MRSA ST398) has emerged in livestock worldwide. In particular, areas in Europe with high densities of livestock farming are affected. Consequently, the incidence of human colonization and infection with ST398 is rapidly increasing. Distinguishing different ST398 isolates with standard typing tools is problematic. The objective of this study was to examine the discriminatory power of multiple-locus variable number tandem repeat (VNTR) fingerprinting (MLVF) on a highly diverse ST398 collection. Our data show that MLVF combined with *spa*-typing is an attractive approach for high-resolution typing of ST398 isolates and unveiling their relatedness.

Epidemiological studies on *Staphylococcus aureus* have shown that certain lineages of this important pathogen are prevalent in specific host populations or regions of the world. Additionally, different lineages of staphylococci are encountered in healthcare facilities and the general population [1]. This complex epidemiology is particularly evident for the lineage with the multi-locus sequence type 398 (ST398), which is predominantly found in livestock, farming environments, individuals with direct or indirect livestock contacts, and further along in the food chain [2-4]. The ST398 clone was first reported in 2005 in France, and has since been isolated in many other countries, primarily in Europe but also in North America and Asia [5-8]. In Europe, the reported numbers of ST398 isolates correlate with the densities of livestock farms [2]. However, due to industrialization and globalization of the livestock industry, this lineage represents not only a potential threat for public health in agricultural regions, but also for the wider community. Consequently, it is also encountered in individuals with no apparent livestock contacts [9]. Serious infections in humans caused by *S. aureus* ST398, especially its methicillin-resistant form MRSA, are still rare, but the proportion of clinical cases caused by MRSA ST398 is increasing in areas with a high livestock density [3].

Identification of ST398 isolates is mostly based on multilocus sequence typing (MLST) [10]. However, MLST does not reveal variations between individual ST398 isolates as recently detected by whole-genome sequencing [11]. While whole-genome sequencing has the highest discriminatory power, this technique is not yet sufficiently developed for day-to-day routine typing of *S. aureus* isolates. Considering the increasing numbers of clinical cases related to ST398, highly discriminatory, fast and cheap typing tools are needed for effective outbreak prevention, control measures and traceability studies. Unfortunately, typing with the 'gold standard' method pulsed-field gel electrophoresis (PFGE) is problematic, since chromosomal DNA of ST398 isolates is resistant to macro-restriction with *Sma*I due to methylation of the respective cleavage site [12]. Also, PFGE is relatively slow, labor-intensive, and expensive. A more generally used method to cluster ST398 isolates is *spa*-typing, which is based on sequencing of the *spa* gene [13]. To date, several closely related *spa*-types have been identified among ST398, the most prevalent being t011, t034 and t108 [14].

The present study was aimed at exploring the applicability of a Variable-Number Tandem-Repeat (VNTR) typing method for distinguishing ST398 isolates and determining their relatedness. Such methods have a high discriminatory power and are rapid, cheap and easy-to-use [15]. Specifically, multiple-locus VNTR fingerprinting (MLVF) was applied to distinguish 184 different ST398 isolates collected from seven European countries between 2003 and 2010 (Supporting Information Table 1, available upon request or under DOI: 10.1016/j.ijmm.2013.02.015). These isolates included ten different *spa*-types of which seven were detected in more than one isolate. The majority of isolates belonged to *spa*-types t011 (n=92), t034 (n=45) and t108 (n=25). In addition, two ST9 control isolates with the *spa*-type t899 were used for MLVF. This analysis yielded 49 different MLVF banding patterns (Figure 1); 18 were derived from two or more isolates (155 isolates) and 31 from single isolates. MLVF grouped the 186 isolates into 9 clusters denoted as A (n=2), B (n=1), C (n=1), D (n=93), E (n=2), F (n=53), G (n=1), H (n=32) and I (n=1). Notably, the banding pattern of the ST9 control isolates was grouped in the entirely unrelated cluster A. In general, MLVF grouped isolates with the same *spa*-type into the same cluster. Importantly, it revealed sub-clusters of isolates with the same *spa*-type. However, certain isolates with

different *spa*-types were also grouped into one cluster or sub-cluster. Specifically, cluster D included mostly isolates with *spa*-type t011, cluster F isolates with *spa*-type t034, and cluster H isolates with *spa*-type t108.

The clusters generated by MLVF could not be linked to general epidemiological features, such as the country of origin, year of isolation or source. However, detailed evaluation of the dendrogram revealed an interesting alignment of six isolates from a Spanish farmers' family [4]. Although most isolates from this family were ST398 with closely related *spa*-types, MLVF grouped them into different clusters. Isolates ST-E1, ST-E2 and ST-E4 showed identical banding patterns, whereas isolates ST-E3, ST-E5 and ST-E6 yielded different patterns. Interestingly, the MLVF pattern of isolates ST-E1/E2/E4 was also observed for isolates from Belgium, Germany, the Netherlands and Switzerland (Figure 1). The MLVF pattern of the ST-E3 isolate was also observed in 15 isolates from the Netherlands, whereas that of the closely related ST-E6 isolate was unique. The family members were thus exposed to at least three different ST398 MLVF types.

The fact that MRSA ST398 has become a frequent clone in livestock in Europe and is spreading in humans might imply that it is likely to cause treatment problems in the future, not only in the community but also in nosocomial settings. The view that multi-resistant MRSA ST398 is likely to become a nosocomial problem is underscored by the fact that ~25% of the MRSA isolates recovered from patients entering the University Medical Center Groningen between 2003 and 2010 belonged to this lineage [15]. These 46 non-replicate MRSA isolates yielded 15 distinct MLVF banding patterns that were evenly distributed over the entire dendrogram, being grouped in five of the eight clusters (Figure 1). The here presented high-resolution typing of ST398 isolates has until now not been performed for such a large and diverse collection of ST398 isolates. Our data show that MLVF can be applied to follow lines of transmission of ST398 in order to prevent or control possible outbreaks [15]. This approach is complementary to *spa*-typing and, together, MLVF and *spa*-typing could replace MLST, which is so far used as sole criterion in epidemiological analyses of ST398. Moreover, MLVF is capable of unveiling the relationships between different ST398 isolates. These are crucial features for molecular typing of *S. aureus*, epidemiological surveillance and effective infection control measures within hospitals. Lastly, the identification of specific MLVF clusters and sub-clusters represents an excellent starting point for tracking the evolution of *S. aureus* ST398.

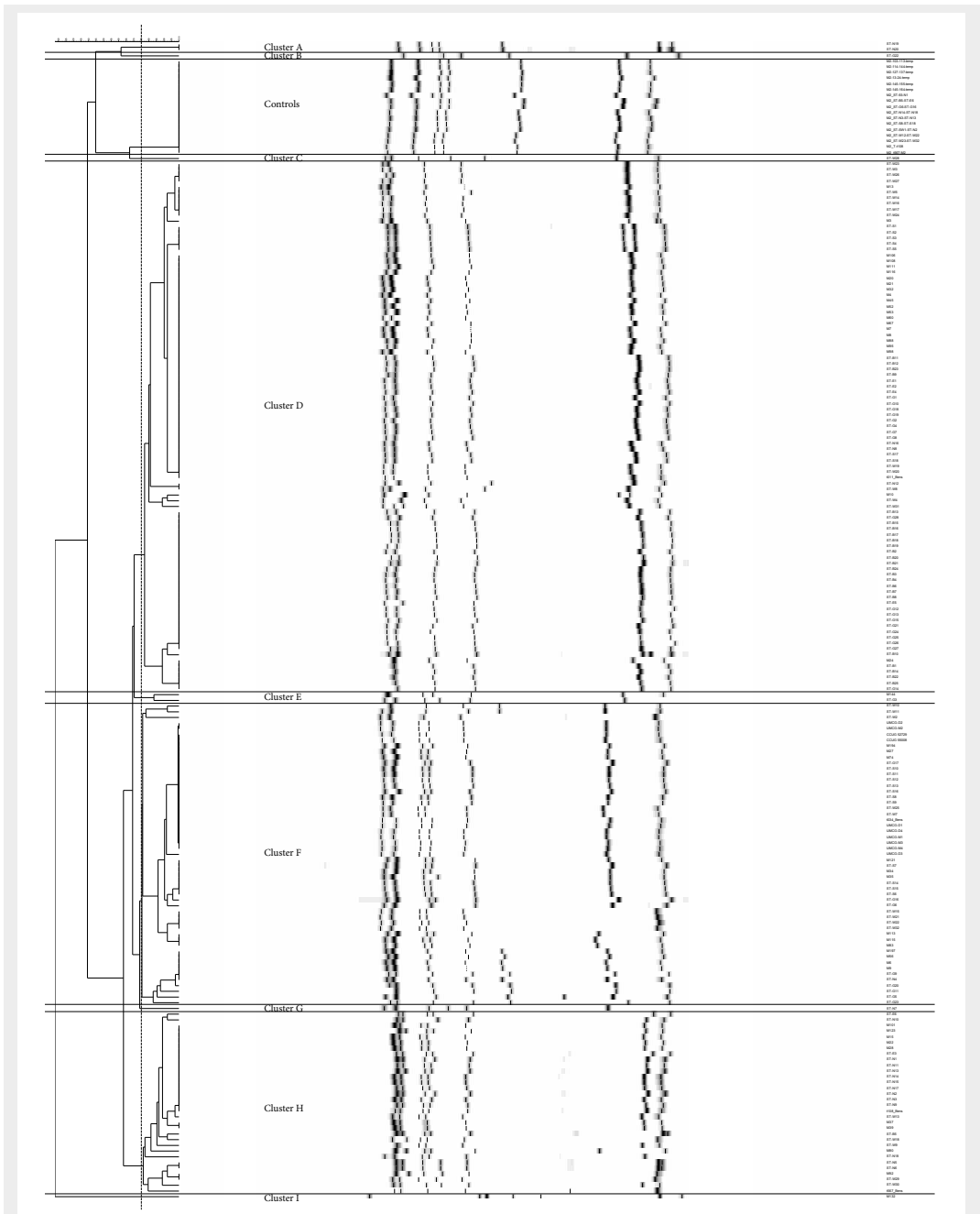


Figure 1. MLVF dendrogram of 184 *S. aureus* ST398 isolates generated by the UPGMA algorithm. The MLVF experiments, including DNA isolation, multiplex PCR, separation of PCR products on the Bioanalyzer 2100 (Agilent Technologies), and data analyses with GelCompar II (Applied Maths, Sint-Martens-Latem) were performed as recently described [15]. The position tolerance and optimization were set to 0.9% and 0.5%, respectively. After visual inspection of the MLVF dendrogram, six different cut-off values (89%, 80%, 78%, 75% and 68%) were chosen for testing the concordance between MLVF and *spa*-types. On the cluster level, the highest (and very good) concordance between MLVF and *spa*-typing was found at 75% (Adjusted Rand's Coefficient 0.712). Therefore, the cut-off value was set to 75%. Additionally to the 184 studied ST398 isolates, 2 control isolates with sequence type 9, and 17 control samples of the isolate M2 were included in this delineation. The names of clusters and individual *S. aureus* isolates are indicated in the dendrogram. Specific information on the investigated *S. aureus* isolates is presented in the Supporting Information Table 1 (available upon request or under DOI: 10.1016/j.ijmm.2013.02.015).

ACKNOWLEDGEMENTS

CG was supported by a fellowship from the Groningen University Institute for Drug Exploration. AJS, and JMvD were in parts supported by the CEU projects LSHM-CT-2006-019064, and LSHG-CT-2006-037469, and the Top Institute Pharma project T4-213. AJS was supported by the Interreg IVa funded projects EurSafety Health-net (III-1-02=73) and SafeGuard (III-2-03=025), part of a Dutch-German cross-border network supported by the European Commission, the German Federal States of Nordrhein-Westfalen and Niedersachsen and the Dutch provinces of Overijssel, Gelderland and Limburg.

REFERENCES

1. Monecke S, Coombs G, Shore AC, Coleman DC, Akpaka P, Borg M, et al. A field guide to pandemic, epidemic and sporadic clones of methicillin-resistant *Staphylococcus aureus*. (null), editor. PLoS ONE. 2011;6(4):e17936.
2. Wulf MWH, Verduin CM, Nes A, Huijsdens X, Voss A. Infection and colonization with methicillin resistant *Staphylococcus aureus* ST398 versus other MRSA in an area with a high density of pig farms. Eur J Clin Microbiol Infect Dis. 2011;31(1):61–5.
3. Köck R, Siam K, Al-Malat S, Christmann J, Schaumburg F, KK B, et al. Characteristics of hospital patients colonized with livestock-associated methicillin-resistant *Staphylococcus aureus* (MRSA) CC398 versus other MRSA clones. J Hosp Infect. Elsevier Ltd; 2011;79(4):292–6.
4. Aspiroz C, Lozano C, Vindel A, Lasarte JJ, Zarazaga M, Torres C. Skin lesion caused by ST398 and ST1 MRSA, Spain. Emerging Infect Dis. 2010;16(1):157–9.
5. Lewis HC, Mølbak K, Reese C, Aarestrup FM, Selchau M, Sørum M, et al. Pigs as source of methicillin-resistant *Staphylococcus aureus* CC398 infections in humans, Denmark. Emerging Infect Dis. 2008;14(9):1383–9.
6. Lim S-K, Nam H-M, Jang G-C, Lee H-S, Jung S-C, Kwak H-S. The first detection of methicillin-resistant *Staphylococcus aureus* ST398 in pigs in Korea. Vet Microbiol. 2012;155(1):88–92.
7. Bhat M, Dumortier C, Taylor BS, Miller M, Vasquez G, Yunen J, et al. *Staphylococcus aureus* ST398, New York City and Dominican Republic. Emerging Infect Dis. 2009;15(2):285–7.
8. Armand-Lefevre L, Ruimy R, Adremont A. Clonal comparison of *Staphylococcus aureus* isolates from healthy pig farmers, human controls, and pigs. Emerging Infect Dis. Centers for Disease Control and Prevention; 2005;11(5):711–4.
9. Welinder-Olsson C, Florén-Johansson K, Larrson L, Öberg S, Karlsson L. Infection with panton-valentine leukocidin-positive methicillin-resistant *Staphylococcus aureus* t034. Emerging Infect Dis. 2008;14(8):1271–2.
10. Enright MC, Spratt BG. Multilocus sequence typing. Trends Microbiol. 1999;7(12):482–7.
11. Price LB, Stegger M, Hasman H, Aziz M, Larsen J, Andersen PS, et al. *Staphylococcus aureus* CC398: host adaptation and emergence of methicillin resistance in livestock. MBio. 2011;3(1):e00305–11–e00305–11.
12. Bens CCPM, Voss A, Klaassen CW. Presence of a novel DNA methylation enzyme in methicillin-resistant *Staphylococcus aureus* isolates associated with pig farming leads to uninterpretable results in standard pulsed-field gel electrophoresis analysis. J Clin Microbiol. 2006;44(5):1875–6.
13. Koreen L, Ramaswamy SV, Graviss EA, Naidich S, Musser JM, Kreiswirth BN. *spa* typing method for discriminating among *Staphylococcus aureus* isolates: implications for use of a single marker to detect genetic micro- and macrovariation. J Clin Microbiol. 2004;42(2):792–9.
14. Smith TC, Pearson N. The Emergence of *Staphylococcus aureus* ST398. Vector Borne Zoonotic Dis. 2011;11(4):327–39.
15. Sabat AJ, Chlebowicz MA, Grundmann H, Arends JP, Kampinga G, Meessen NEL, et al. Microfluidic chip-based multiple-locus variable-number tandem repeat fingerprinting (MLVF) with new primer sets for methicillin-resistant *Staphylococcus aureus*. J Clin Microbiol. 2012;50(7):2255–62.

‘Gib jedem Tag die Chance, der schönste des Lebens zu werden.’
Mark Twain (1835-1910)