

University of Groningen

Cerebral oxygenation during pediatric congenital cardiac surgery and its association with outcome

Modestini, Marco; Hoffmann, Lisa; Niezen, Caren; Armocida, Benedetta; Vos, Jaap Jan; Scheeren, Thomas W L

Published in:
Canadian journal of anesthesia-Journal canadien d anesthésie

DOI:
[10.1007/s12630-020-01733-1](https://doi.org/10.1007/s12630-020-01733-1)

IMPORTANT NOTE: You are advised to consult the publisher's version (publisher's PDF) if you wish to cite from it. Please check the document version below.

Document Version
Publisher's PDF, also known as Version of record

Publication date:
2020

[Link to publication in University of Groningen/UMCG research database](#)

Citation for published version (APA):

Modestini, M., Hoffmann, L., Niezen, C., Armocida, B., Vos, J. J., & Scheeren, T. W. L. (2020). Cerebral oxygenation during pediatric congenital cardiac surgery and its association with outcome: a retrospective observational study. *Canadian journal of anesthesia-Journal canadien d anesthésie*, 67(9), 1170-1181. <https://doi.org/10.1007/s12630-020-01733-1>

Copyright

Other than for strictly personal use, it is not permitted to download or to forward/distribute the text or part of it without the consent of the author(s) and/or copyright holder(s), unless the work is under an open content license (like Creative Commons).

The publication may also be distributed here under the terms of Article 25fa of the Dutch Copyright Act, indicated by the "Taverne" license. More information can be found on the University of Groningen website: <https://www.rug.nl/library/open-access/self-archiving-pure/taverne-amendment>.

Take-down policy

If you believe that this document breaches copyright please contact us providing details, and we will remove access to the work immediately and investigate your claim.

Downloaded from the University of Groningen/UMCG research database (Pure): <http://www.rug.nl/research/portal>. For technical reasons the number of authors shown on this cover page is limited to 10 maximum.



Cerebral oxygenation during pediatric congenital cardiac surgery and its association with outcome: a retrospective observational study

L'oxygénation cérébrale pendant la chirurgie cardiaque congénitale pédiatrique et son association au pronostic : une étude observationnelle rétrospective

Marco Modestini, MD · Lisa Hoffmann, BSc · Caren Niezen, MD · Benedetta Armocida, MD · Jaap Jan Vos, MD, PhD · Thomas W. L. Scheeren, MD, PhD

Received: 9 November 2019 / Revised: 25 March 2020 / Accepted: 1 May 2020
© The Author(s) 2020

Abstract

Purpose Non-invasive cerebral oxygen saturation (ScO_2) monitoring is an established tool in the intraoperative phase of pediatric congenital cardiac surgery (CCS). This study investigated the association between ScO_2 and postoperative outcome by investigating both baseline ScO_2 values and intraoperative desaturations from baseline.

Methods All CCS procedures performed in the period 2010–2017 in our institution in which ScO_2 was monitored were included in this historical cohort study. Baseline ScO_2 was determined after tracheal intubation, before surgical incision. Subgroups were based on cardiac pathology and degree of intracardiac shunting. Poor outcome was defined based on length of stay (LOS) in the intensive care unit (ICU)/hospital, duration of mechanical ventilation (MV),

and 30-day mortality. Intraoperatively, ScO_2 total time below baseline (TBBL) and ScO_2 time-weighted average (TWA) were calculated.

Results Data from 565 patients were analyzed. Baseline ScO_2 was significantly associated with LOS in ICU (odds ratio [OR] per percentage decrease in baseline ScO_2 , 0.95; 95% confidence interval [CI], 0.93 to 0.97; $P < 0.001$), with LOS in hospital (OR, 0.93; 95% CI, 0.91 to 0.96; $P < 0.001$), with MV duration (OR, 0.92; 95% CI, 0.90 to 0.95; $P < 0.001$) and with 30-day mortality (OR, 0.94; 95% CI, 0.91 to 0.98; $P = 0.007$). Cerebral oxygen saturation TWA had no associations, while ScO_2 TBBL had only a small association with LOS in ICU (OR, 1.02; 95% CI, 1.01 to 1.03; $P < 0.001$), MV duration (OR, 1.02; 95% CI, 1.01 to 1.03; $P = 0.002$), and LOS in hospital (OR, 1.02; 95% CI, 1.01 to 1.04; $P < 0.001$).

Conclusion In pediatric patients undergoing cardiac surgery, low baseline ScO_2 values measured after tracheal intubation were associated with several adverse postoperative outcomes. In contrast, the severity of actual intraoperative cerebral desaturation was not associated with postoperative outcomes. Baseline ScO_2 measured after tracheal intubation may help identify patients at increased perioperative risk.

Marco Modestini and Lisa Hoffmann equally contributed to this work and have to be considered first author.

M. Modestini, MD · C. Niezen, MD · B. Armocida, MD · J. J. Vos, MD, PhD (✉) · T. W. L. Scheeren, MD, PhD
Department of Anesthesiology, University of Groningen, University Medical Center Groningen, Groningen, The Netherlands
e-mail: j.j.vos@umcg.nl

L. Hoffmann, BSc
Department of Anesthesiology, University of Groningen, University Medical Center Groningen, Groningen, The Netherlands

European Medical School Oldenburg-Groningen, Oldenburg, Germany

Résumé

Objectif Le monitoring non invasif de la saturation cérébrale en oxygène (ScO_2) est un outil bien établi en phase peropératoire de chirurgie cardiaque congénitale pédiatrique. Cette étude a examiné l'association entre la ScO_2 et le pronostic postopératoire en étudiant les valeurs

de ScO_2 initiales et les désaturations peropératoires par rapport à ces valeurs.

Méthode Toutes les interventions en chirurgie cardiaque congénitale réalisées entre 2010 et 2017 dans notre établissement et au cours desquelles la ScO_2 a été monitorée ont été incluses dans cette étude de cohorte historique. La ScO_2 de base était déterminée après l'intubation trachéale, avant l'incision chirurgicale. Les sous-groupes ont été catégorisés en fonction de la pathologie cardiaque et des shunts intracardiaques. Un mauvais pronostic était défini en fonction de la durée de séjour à l'unité de soins intensifs (USI)/ l'hôpital, de la durée de ventilation mécanique et de la mortalité à 30 jours. Pendant l'intervention, le temps total pendant lequel la ScO_2 était au-dessous des valeurs de base et la moyenne pondérée dans le temps ont été calculés.

Résultats Les données de 565 patients ont été analysées. Une association significative a été observée entre la ScO_2 de base et la durée de séjour à l'USI (diminution du rapport de cotes [RC] par pourcentage de la ScO_2 de base, 0,95; intervalle de confiance [IC] 95 %, 0,93 à 0,97; $P < 0,001$), la durée de séjour à l'hôpital (RC, 0,93; IC 95 %, 0,91 à 0,96; $P < 0,001$), la durée de ventilation mécanique (RC, 0,92; IC 95 %, 0,90 à 0,95; $P < 0,001$) et la mortalité à 30 jours (RC, 0,94; IC 95 %, 0,91 à 0,98; $P = 0,007$). La moyenne pondérée dans le temps de la saturation cérébrale en oxygène n'a pas révélé d'association, alors que le temps total au-dessous des valeurs de base de ScO_2 n'a révélé qu'une petite association avec la durée de séjour à l'USI (RC, 1,02; IC 95 %, 1,01 à 1,03; $P < 0,001$), la durée de ventilation mécanique (RC, 1,02; IC 95 %, 1,01 à 1,03; $P = 0,002$), et la durée de séjour à l'hôpital (RC, 1,02; IC 95 %, 1,01 à 1,04; $P < 0,001$).

Conclusion Chez les patients pédiatriques subissant une chirurgie cardiaque, des valeurs de ScO_2 basses lorsque mesurées après l'intubation trachéale étaient associées à plusieurs complications postopératoires. En revanche, la gravité de la désaturation cérébrale peropératoire n'était pas associée aux devenir postopératoires. La ScO_2 de base mesurée après l'intubation trachéale pourrait nous aider à identifier les patients courant un risque périopératoire accru.

Keywords (Cerebral) tissue oxygenation · congenital cardiac surgery · pediatric surgery · postoperative outcome · hemodynamic monitoring

The survival of pediatric patients with congenital heart disease (CHD) that undergo congenital cardiac surgery (CCS) has improved substantially in the last decades.¹ Still, in the (early) postoperative phase following CCS, mortality

remains increased.^{1,2} Especially in the perioperative phase, CCS procedures can be complicated by organ injury³ such as acute kidney injury,⁴ and adverse neurologic events such as seizures and strokes.⁵ The development of such complications can prolong treatment in the intensive care unit (ICU), including protracted duration of mechanical ventilation (MV), and can lead to longer hospitalization, which is associated with increased morbidity and mortality,^{1–3,6} along with higher costs.^{1,6,7}

The use of cerebral near-infrared spectroscopy (NIRS) for measuring cerebral oxygen saturation (ScO_2) has gained an established role in the perioperative monitoring of cerebral perfusion and oxygenation in pediatric CCS procedures.^{8,9} Yet, its effect on influencing outcome by improving perioperative hemodynamic management in CCS remains elusive; in particular conditions of CCS, e.g., in surgical correction of the hypoplastic left heart syndrome,¹⁰ ScO_2 was shown to predict postoperative outcome and improve postoperative outcome only in small studies.¹¹

The spectrum of CHD is, however, broad with substantial differences in cardiopulmonary anatomy and pathology—associated differences in perioperative NIRS readings precludes generalization of perioperative ScO_2 readings.^{12–14}

Moreover, the influence of intraoperative cerebral desaturation on postoperative outcome in this patient population is unclear. There is also no evidence that prevention of intraoperative cerebral desaturation will reduce the likelihood of an adverse (neurologic) event.

Therefore, the primary goal of this study was to investigate whether there is an association between postoperative outcome and ScO_2 values determined either at baseline (after induction of general anesthesia and tracheal intubation, pre-incision) or during the intraoperative phase in a broad population of pediatric CHD patients undergoing CCS.

Methods

Design and selection criteria

This was a historical cohort study of pediatric patients undergoing CCS in our institution from January 2010 until December 2017. The study has been approved by the local ethics committee (University Medical Center Groningen, Netherlands, Registration number: 2016/036; 22 February 2016) and the requirement for written informed consent was waived by the institutional review board given its retrospective design. This manuscript adheres to the applicable Strengthening the Reporting of Observational Studies in Epidemiology guideline.

All elective cases of pediatric CCS were included for analysis when a) the surgical procedure involved surgical correction of a congenital cardiac problem, and b) ScO₂ was monitored continuously in the intraoperative period.

To account for differences in congenital cardiac conditions, patients were divided into four subgroups as described previously¹⁴: “no cyanosis, no shunting”, “no cyanosis, but left-to-right (L–R) shunting”, “cyanosis without L–R shunting” and “cyanosis with L–R shunting”.

Anesthetic management

Given the historical character of the current study, induction and maintenance of anesthesia, and intraoperative hemodynamic management in response to ScO₂ reductions were at the discretion of the attending anesthesiologist. General anesthesia was induced either by inhalation using sevoflurane or intravenously using propofol or etomidate. Maintenance of anesthesia was achieved with continuous infusion of propofol or midazolam and sufentanil; muscle relaxation was achieved using rocuronium or pancuronium. Ventilation was adjusted to the patient’s individual weight, physiology, and desired intrathoracic pressure using either pressure- or volume-controlled mode. Arterial oxygen saturation, five-lead continuous electrocardiogram, and end-tidal carbon dioxide (etCO₂) were monitored continuously through the operation. Invasive blood pressure was also monitored through cannulation of the radial or femoral artery. The central vein was accessed through the internal jugular, subclavian, or femoral vein, depending on patient and surgical characteristics. Arterial and venous blood gas samples were taken during the operation at appropriate time points. Cerebral oxygen saturation was measured by NIRS (INVOS® 5100C cerebral oximetry monitor; Medtronic, MN, USA). One or two pediatric sensors were placed on either side of the forehead, depending on the preference of the attending anesthesiologist, and the size of the child. In the study period, there was no hemodynamic optimization algorithm on which interventions were based. Also, transesophageal echocardiography, continuous cardiac output monitoring, and somatic oxygen saturation monitoring were not used routinely and were not further considered in this retrospective study. Anesthesiologists were *not* blinded to the ScO₂ measurements.

Data collection and handling

In our institution, all cardiothoracic surgery operating rooms are equipped with medical grade computers for collecting the electronic medical records, including the continuous registration of data from the ventilator and vital

signs monitor (IntelliVue MX800, Philips, Eindhoven, The Netherlands). For the purpose of this study, relevant data were extracted to a separate database (Excel, Microsoft, Redmond, USA) for further analysis. Along with all intraoperative data, patient characteristics were collected (diagnosis, sex, age, weight, and height at the time of surgical intervention). Also, the duration of surgery, cardiopulmonary bypass (CPB) time, and aorta clamping time were collected.

An automated algorithm was used to eliminate ScO₂ artefacts: ScO₂ values were omitted when 1) values were implausible, i.e., below 15% and above 95% (according to the manufacturer specifications),¹⁵ and 2) obvious artefacts were observed, which were defined as abrupt changes in three consecutive values by more than 50% and an abrupt return to at least 80% of the first value. Additionally, all data were reviewed manually by two researchers independently to account for obvious artefacts not covered by the algorithm. When a mutual decision on artefactual data could not be reached, the case was excluded.

Per patient, baseline ScO₂ was defined at two minutes before surgical incision, as ScO₂ was assumed to have reached steady-state conditions with an inspired fraction of oxygen (F_IO₂) between 0.3 and 0.4, and etCO₂ between 5 and 6% at that time point. Data were reviewed visually to assure that baseline ScO₂ was defined at an appropriate, hemodynamically stable time point.

In case of two simultaneous ScO₂ values (bi-frontal measurement), the mean of both values was taken and established as the baseline value per patient.

Additionally, the Society of Thoracic Surgeons-European Association for Cardio-Thoracic Surgery (STS-EACTS) mortality score, which primarily depends on the complexity of the surgical intervention, was calculated per patient.^{16,17}

Outcomes

The distribution of outcome variables was calculated per subgroup (as based on the congenital cardiac pathology described above) to provide an assessment of “poor outcome” per subgroup, since it was assumed that the absolute values of the outcome variables would substantially differ per subgroup. Here, “poor outcome”—which indicates a protracted postoperative duration of MV or LOS on the ICU or in the hospital—was defined by dichotomization, for which values above the third quartile were considered a “poor outcome”. Secondary, in-hospital mortality, 30-day mortality, and one-year mortality after surgery were investigated. All outcome variables were defined before the start of data collection.

Statistical analysis

Per patient, the individual ScO₂ baseline values (defined as outlined above) served as basis for subsequent statistical analyses. Intraoperative declines in ScO₂ relative to this baseline were calculated as the individual time below ScO₂ baseline (TBBL). After calculating the individual area under the curve (AUC = product of absolute ScO₂ deviation below baseline and the corresponding duration in minutes), the time-weighted average (TWA) of intraoperative desaturations could be calculated, which is equivalent to dividing the AUC by the individual duration of surgery.¹⁸

The relationship between outcome and ScO₂ was assessed using a logistic regression model, which included the variables baseline ScO₂, TBBL, TWA, and the congenital cardiac subgroup (the latter accounted for the different diagnoses). These predictors were entered in a stepwise backward model using the likelihood ratio statistic for each of the three outcome variables LOS in ICU, LOS in hospital, and length of MV. For the relationship with 30-day mortality, the STS-EACTS score was added to the model. Goodness of fit was assessed using the Hosmer-Lemeshow test and associated odds ratios (OR) are given to assess the odds after a unit change in the investigated predictors.

Receiver operating characteristics (ROC) analysis was performed to assess the predictive ability of baseline ScO₂ with regard to mortality in terms of sensitivity and specificity. Optimal cut-off values were calculated using the Youden index. The STS-EACTS score was included in this analysis as a reference. The ROC-derived optimal baseline ScO₂ cut-off value was included in a Kaplan-Meier survival analysis for comparison of mortality.

For all performed tests, statistical significance was set at a *P* value of < 0.05. Tests were adjusted for multiple testing to control for the family-wise inflation of type I error rate, when deemed relevant. All tests were performed two-sided. All data were collected and synchronized in Microsoft Excel 2010 (Redmond, USA). Statistical analysis was performed using IBM SPSS Statistics 23 (IBM Inc., Chicago, IL, USA) and MedCalc (MedCalc Software, Ostend, Belgium).

Results

A total of 1,060 congenital cardiac surgical procedures were performed from January 2010 to December 2017 in our institution (Fig. 1). Patients in whom ScO₂ was not available (*n* = 317) or in whom non-cardiac surgical procedures were performed (*n* = 40) were not included for further analysis. Eventually, 565 patients were included in

the final analysis. The distribution of patients between the CHD subgroups, as well as their individual diagnoses, is given in Table 1. Patient characteristics and general surgical characteristics are presented in Table 2. The postoperative outcome characteristics of all patients are summarized in Table 3.

Baseline ScO₂

In general, baseline values of ScO₂ (i.e., after tracheal intubation, before surgical incision) were lower in cyanotic patients (subgroup 3 and 4) than in non-cyanotic patients (subgroup 1 and 2): 60% vs 67%, respectively, *P* < 0.001 (Table 4). There were no further differences in baseline ScO₂ in patients with and without L-R shunting in either non-cyanotic (group 2 vs group 1, respectively) and cyanotic patients (group 4 vs group 3, respectively).

Baseline ScO₂ was significantly associated with all defined postoperative outcome variables (Table 5), meaning that a lower baseline ScO₂ was associated with an increased odds for the respective outcome variables (LOS in ICU: OR, 0.95; 95% confidence interval [CI], 0.93 to 0.97; duration of MV: OR, 0.92; 95% CI, 0.90 to 0.95; LOS in hospital: OR, 0.93; 95% CI, 0.91 to 0.96; 30-day mortality: OR, 0.94; 95% CI, 0.91 to 0.98). Of note, the cardiac pathology subgroup itself was either not related to outcome (LOS in ICU: OR, 0.85; 95% CI, 0.71 to 1.03; *P* = 0.1; duration of MV: OR, 0.85; 95% CI, 0.69 to 1.05; *P* = 0.13) or was removed from the model (LOS in hospital and 30-day mortality) as it did not improve the model.

Baseline ScO₂ showed a stronger association with 30-day mortality than the STS-EACTS score (OR per percentage decrease in baseline ScO₂, 0.94; 95% CI, 0.91 to 0.98; vs OR per unit increase in STS-EACTS score, 1.56; 95% CI, 0.95 to 2.53, respectively).

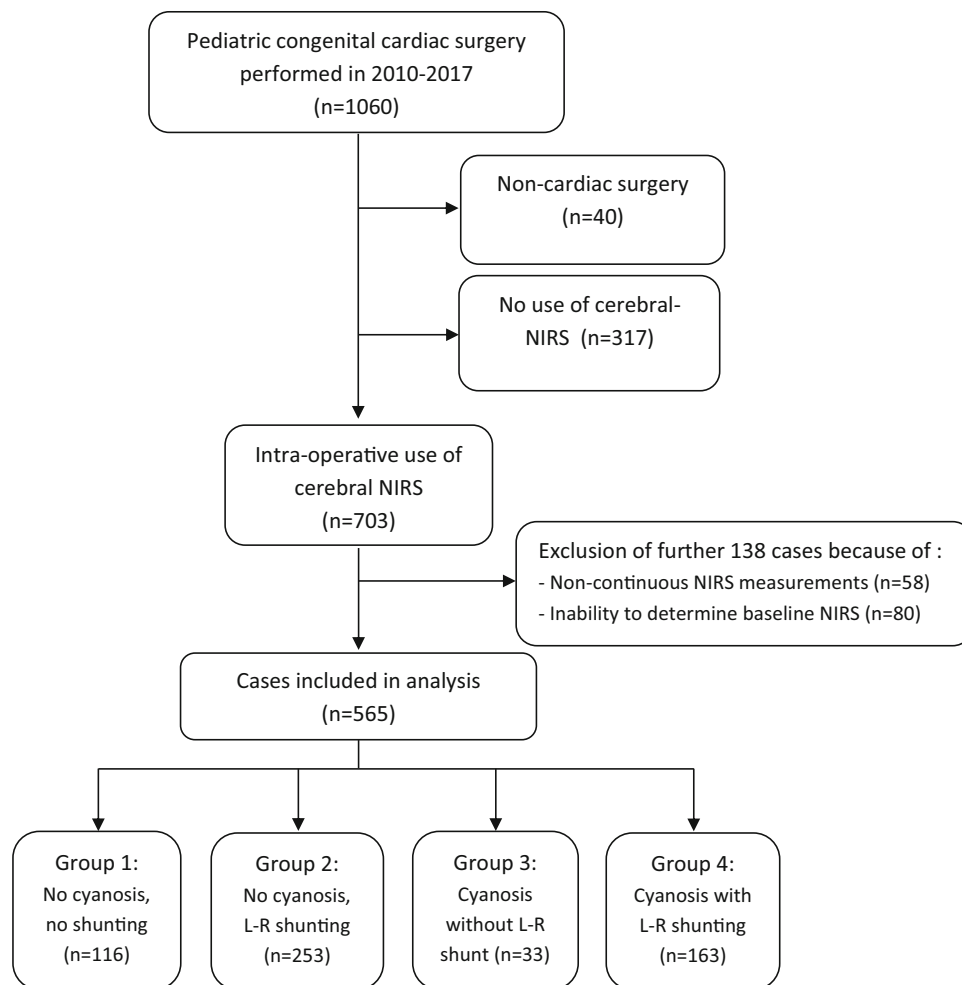
Intraoperative ScO₂

The data on intraoperative ScO₂ values are presented in Table 4. Overall intraoperative ScO₂ values were lower in cyanotic patients (subgroups 3 and 4) than in non-cyanotic patients (subgroups 1 and 2) (61% vs 66%, respectively; *P* < 0.001).

In 483 patients (86%), ScO₂ decreased below individual baseline values at some time point during surgery, irrespective of the length and degree of desaturation. There were no differences in the incidence of intraoperative ScO₂ desaturations between the subgroups (*n* = 11, 47, 3, and 21 for subgroups 1-4, respectively).

Cerebral oxygen saturation TWA showed no association with any of the outcome variables (Table 5). Cerebral oxygen saturation TBBL was only weakly associated with the other outcome variables, except 30-day mortality (LOS

Fig. 1 Flow chart depicting the gathering of available data from all cases of pediatric congenital cardiac surgery performed in our institution (2010–2017); NIRS = near-infrared spectroscopy; L-R = left-to-right.



in ICU: OR, 1.02; 95% CI, 1.01 to 1.03; $P < 0.001$; duration of MV: OR, 1.02; 95% CI, 1.01 to 1.03; $P = 0.002$; LOS in hospital: OR, 1.02; 95% CI, 1.01 to 1.04; $P < 0.001$).

Prediction of postoperative outcome by baseline ScO₂ and STS-EACTS score

The areas under the ROC curve for the prediction of 30-day mortality by baseline ScO₂ and STS-EACTS was comparable (0.66 [95% CI, 0.55 to 0.76] vs 0.65 [95% CI, 0.54 to 0.77], respectively) and both were significantly different from the reference line ($P = 0.006$ and $P = 0.007$, respectively). The optimal cut-off baseline ScO₂ value of 60%—as derived by the Youden index—for predicting 30-day mortality was subsequently used as factor in a Kaplan-Meier survival analysis for analyzing one-year mortality. This analysis revealed a substantial difference in mortality: patients with a baseline ScO₂ > 60% survived significantly longer than patients with a baseline ScO₂ below 60% (Mantel-Cox [$X^2 = 10$]; $P = 0.001$; Fig. 2).

Discussion

We investigated the association between intraoperative NIRS-derived ScO₂ and surgical outcome after pediatric CCS performed in our hospital over an eight-year period. In this large historical analysis, lower baseline ScO₂ values—determined after tracheal intubation but before surgical incision—were associated with a longer ICU and hospital stay, as well as with a longer duration of MV, irrespective of the congenital cardiac pathology. Moreover, baseline ScO₂ showed a stronger association with 30-day mortality than the STS-EACTS score did. In contrast, although intraoperative cerebral desaturation occurred frequently in a substantial number of patients, there was no clear association between both the extent and severity of cerebral desaturation and any of the investigated outcome variables.

Baseline ScO₂

Cerebral oxygen saturation monitoring has gained an established role during CCS procedures; however, little is

Table 1 Cardiac pathology subgroups

No cyanosis, no mixing	
(Group 1)	
Right ventricle outflow tract obstructions repair or conduit	13
Valve replacement or repair	38
Left ventricle outflow tract obstruction repair	53
Others (<i>Ebstein anomaly, double aortic arch, vessel anomaly, A.lusoria, hypertrophic obstructive cardiomyopathy</i>)	12
Total	116
Left-to-right shunt without cyanosis	
(Group 2)	
Atrial septum defect	56
Ventricular septum defect	77
Atrioventricular septum defect	81
Open ductus botalli	6
Mixed shunting forms	9
Left obstructive with shunting	11
Right obstructive with shunting	4
Valve repair with shunting	10
Total	254
Cyanosis without left-to-right shunting	
(Group 3)	
Fontan completion (<i>total cavopulmonary connection</i>)	33
Cyanosis with left-to-right-shunting	
(Group 4)	
Tetralogy of Fallot	35
Transposition of great arteries	41
Pulmonary atresia with ventricular septum defect	7
Single ventricle circulation: stage 1 and 2	55
Truncus arteriosus communis	5
Total or partial anomalous pulmonary venous return	19
Total	162

The distribution and detailed depiction of included diagnoses of all cases included for analysis ($n = 565$). Given is the absolute number of patients per group.

Table 2 Patient and intraoperative characteristics

	All cases ($n = 565$)	Subgroup 1 ($n = 116$)	Subgroup 2 ($n = 253$)	Subgroup 3 ($n = 33$)	Subgroup 4 ($n = 163$)
Sex (M/F)	314/252	68/48	129/124	22/11	95/68
Age (yr)	0.7 [0.3-3.9]	4.6 [0.6-10.5]	1.0 [0.4-3.6]	3.9 [3.3-4.6]	0.3 [0.0-0.6]
Weight (kg)	8 [5-16]	16 [8-31]	9 [5-15]	16 [13-18]	5 [4-8]
Height (cm)	70 [58-103]	107 [69-141]	72 [60-100]	103 [93-110]	58 [50-70]
STS-EACTS score	0.8 (0.7)	0.6 (0.4)	0.6 (0.5)	1.3 (1.3)	1.4 (0.7)
Surgery duration (min)	209 [158-284]	194 [139-293]	181 [140-231]	291 [249-348]	258 [198-321]
CPB time (min)	95 [56-151]	89 [0-162]	78 [52-119]	124 [93-180]	124 [79-177]
AoX time (min)	50 [18-85]	44 [17-88]	46 [21-74]	15 [0-66]	65 [19-97]

Continuous data are given as median [interquartile range], except for STS-EACTS, which is given as mean (standard deviation). AoX = aorta cross-clamping; CPB = cardiopulmonary bypass, M = male, F = female; STS-EACTS = Society of Thoracic Surgeons-European Association for Cardio-Thoracic Surgery.

Table 3 Postoperative outcome characteristics

	All cases (n = 565)	Subgroup 1 (n = 114; 20%)	Subgroup 2 (n = 257; 45%)	Subgroup 3 (n = 33; 6%)	Subgroup 4 (n = 162; 29%)
LOS in ICU (days)	2 [1-7]	1 [1-3]	2 [1-4]	4 [2-9]	6 [3-13]
Prolonged ICU stay	138 (24%)	30 (26%)	60 (23%)	8 (24%)	31 (19%)
Duration of MV (days)	1 [1-2]	1 [1-1]	1 [1-1]	1 [1-2]	2 [1-7]
Prolonged duration of MV	104 (18%)	16 (14%)	51 (20%)	8 (24%)	31 (19%)
LOS in-hospital (days)	12 [9-30]	9 [8-38]	10 [9-19]	25 [17-59]	19 [10-32]
Prolonged hospital stay	88 (16%)	11 (10%)	46 (18%)	5 (16%)	32 (20%)
In-hospital mortality	19 (3%)	4 (4%)	4 (2%)	1 (3%)	10 (6%)
30-day mortality	20 (4%)	4 (4%)	5 (2%)	1 (3%)	10 (6%)
One-year mortality	27 (5%)	5 (4%)	7 (3%)	1 (3%)	14 (9%)

Prolonged length of stay in ICU, hospital and prolonged duration of MV is defined as a LOS or duration > 3rd quartile of the subgroup of the individual cases. Data are given as median [interquartile range]. Categorical variables are given as number (%). In-hospital mortality, 30-days mortality and one-year mortality is shown. ICU = intensive care unit; LOS = length of stay; MV = mechanical ventilation; STS-EACTS = Society of Thoracic Surgeons-European Association for Cardio-Thoracic Surgery.

Table 4 Intraoperative cerebral oxygen saturation (ScO₂) and ScO₂ desaturation

	Baseline ScO ₂ (%)	Overall intraoperative ScO ₂ (%)	ScO ₂ AUC below baseline (% x min)	ScO ₂ TWA (%)	Total ScO ₂ TBBL (min)
All patients	66 [57-74]	65 ([59-72])	280 [42-833]	1 [0-4]	50 [13-93]
Non-cyanotic subgroups					
Group 1 (n = 116)	70 [64-79]	70 [64-77]	285 [35-836]	2 [0-4]	50 [15-95]
Group 2 (n = 253)	67 [58-75]	66 [60-72]	221 [24-688]	1 [0-4]	43 [10-80]
Cyanotic subgroups					
Group 3 (n = 33)	66 [59-75]	68 [59-75]	644 [194-1267]	2 [1-3]	76 [42-114]
Group 4 (n = 163)	59 [51-68]	61 [55-66]	315 [63-873]	1 [0-4]	57 [17-109]

Data given as median [interquartile range]. AUC = area under the curve, calculated as the product of cerebral desaturations *below* baseline ScO₂ and time in minutes; TBBL = time below baseline ScO₂; TWA = Time-weighted average, calculated as AUC divided by individual duration of surgery.

known about its impact on postoperative outcome. Here, we performed a large historical analysis of the association between intraoperative ScO₂ and postoperative outcome in patients that underwent CCS. Also, we included all forms of both cyanotic and non-cyanotic cardiac pathologies while we analyzed outcomes separately per group, accounting for intrinsic between-group differences. For baseline ScO₂, there was a clear association with all of the four investigated outcome variables, i.e., 30-day mortality, LOS in hospital, LOS in the ICU, and length of MV. This finding is only in partial agreement with a recent study,¹⁹ as we found an association of baseline ScO₂ with outcome

only in cyanotic CHD patients. Of note, in that small retrospective study (n = 59), outcome was defined differently, and was a composite of death, need for renal replacement therapy, use of extracorporeal membrane oxygenation, or increased length of MV or ICU stay. Also, ScO₂ values were lower in cyanotic patients with poor outcome compared with cyanotic patients without poor outcome, while in non-cyanotic patients, no clear association could be found using univariate analysis. In our multivariable logistic regression model, we incorporated the different congenital cardiac conditions as defined previously.¹⁴ Additionally, we used the distribution of

Table 5 Logistic regression analysis: predictive value for each outcome variable.

Outcome variable		Odds ratio (95% CI)	<i>P</i> value
LOS in ICU ^{a)}	Cardiac pathology subgroup	0.85 (0.71 to 1.03)	0.12
	Baseline ScO ₂	0.95 (0.93 to 0.97)	< 0.001*
	Intraoperative TBBL ScO ₂	1.02 (1.01 to 1.03)	< 0.001*
Duration of MV ^{b)}	Cardiac pathology subgroup	0.85 (0.69 to 1.05)	0.13
	Baseline ScO ₂	0.92 (0.90 to 0.95)	< 0.001*
	Intraoperative TBBL ScO ₂	1.02 (1.01 to 1.03)	0.002*
LOS in hospital ^{c)}	Baseline ScO ₂	0.93 (0.91 to 0.96)	< 0.001*
	Intraoperative TBBL ScO ₂	1.02 (1.01 to 1.04)	< 0.001*
Mortality within first 30 postoperative days ^{d)}	Baseline ScO ₂	0.94 (0.91 to 0.98)	0.007**
	Intraoperative TBBL ScO ₂	1.03 (1 to 1.05)	0.02
	STS-EACTS score ¹⁵	1.56 (0.95 to 2.53)	0.08

a) 0.18 (Hosmer-Lemeshow), 0.06 (Cox & Snell), 0.9 (Nagelkerke). Model $X^2(2) = 35$, $P < 0.001^*$

b) 0.23 (Hosmer-Lemeshow), 0.09 (Cox & Snell), 0.15 (Nagelkerke). Model $X^2(2) = 54.2$, $P < 0.001^*$

c) 0.09 (Hosmer-Lemeshow), 0.08 (Cox & Snell), 0.13 (Nagelkerke). Model $X^2(3) = 42.29$, $P < 0.001^*$

d) 0.09 (Hosmer-Lemeshow), 0.08 (Cox & Snell), 0.13 (Nagelkerke). Model $X^2(3) = 42.29$, $P < 0.001^*$

* *P* is considered significant when < 0.0125 (Bonferroni-correction)

** *P* is considered significant when < 0.01 (Bonferroni-correction)

95% CI = 95% confidence interval; ICU = intensive care unit; LOS = length of stay; MV = mechanical ventilation; ScO₂ = cerebral oxygen saturation; TBBL = time below baseline ScO₂; *P* = significance value.

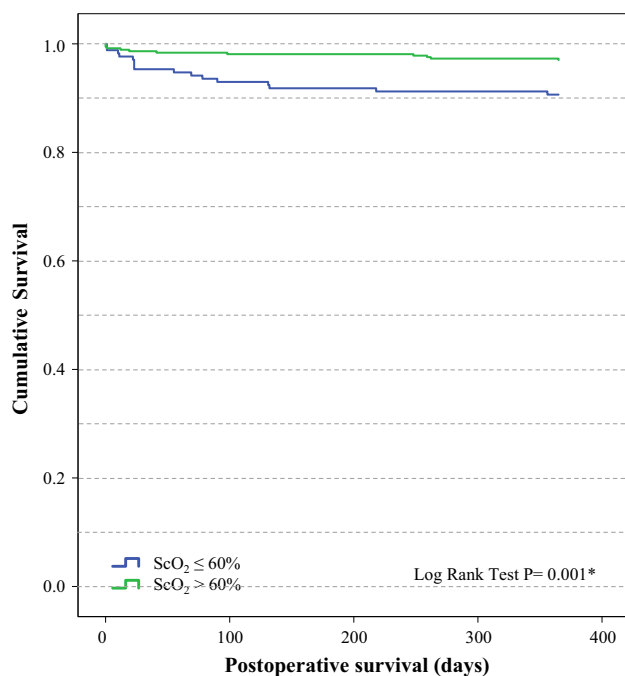


Fig. 2 Kaplan-Meier survival analysis—comparison between children of a cerebral oxygen saturation above 60% (green line) and below (blue line). ScO₂ = cerebral oxygen saturation. **P* is considered significant when < 0.05 .

primary outcome variables per subgroup (Table 1) to define “poor outcome” (i.e., $>$ third quartile of that variable), and hence we were able to provide a more nuanced association between postoperative outcome and CCS, for specific types of CHD, including non-cyanotic (groups 1 and 2) and cyanotic (groups 3 and 4) patients. The latter discrimination is highly relevant, since age and complexity of the surgical procedure are acknowledged predictors of outcome following CCS,¹ but are intrinsically linked in the definition(s) of the subgroups, which improves the robustness of our analysis.

It is important to consider that, although the observed association between baseline ScO₂ and outcome was clear, the magnitude of its impact is relatively limited, reflected by ORs between 0.92 and 0.95. It should, however, be reckoned that in a complex setting like CCS, factors influencing outcome are multifactorial.²⁰ The finding that even an established mortality prediction score like the STS-EACTS score only moderately predicts mortality reflects the complex and multifactorial context of CCS, in which the value of only one variable should not be overemphasized. Nevertheless, baseline ScO₂ values measured after tracheal intubation may at least have some role in identifying those patients at increased risk for adverse postoperative outcome^{13,21}—with a stronger association with 30-day mortality than the STS-EACTS score—and can offer a fast and feasible method to serve as

an “early warning tool”, either intraoperatively or in the early postoperative phase.^{22–26} Hence, baseline ScO₂—determined after tracheal intubation—may guide in clinical routing and pre-emptive cardiopulmonary optimization and risk-stratification. Future studies should evaluate this issue further.

Importantly, as shown previously in adult patients undergoing cardiac surgery,²¹ low ScO₂ values (i.e., < 50%) were associated not only with neurologic adverse outcome but also with increased mortality rates. Therefore, as stated in an accompanying editorial,²⁷ the brain might be an “index organ”, reflecting the severity of cardiopulmonary compromise in the individual patient. The observations on baseline ScO₂ in our study confirm that this statement might apply to pediatric patients undergoing CCS, even when corrected for the baseline differences in ScO₂ per cardiac pathology subgroup.

The definition of a baseline ScO₂ value for the population of pediatric CHD patients is debatable, in the context of evaluating its association with intra- and postoperative hemodynamic management and outcome. The observed differences in baseline ScO₂ values between cyanotic and non-cyanotic patients (60% vs 67%, respectively) were typical and as expected for these populations.¹⁴ In this context, it is important to consider that we determined baseline values under general anesthesia after tracheal intubation, before surgical incision. This time period was chosen for determining baseline values because hemodynamics and F_iO₂ were both stable. In addition, the previous stress around induction of anesthesia has had time to subside. Also, we speculate that setting a baseline condition (i.e., ScO₂) under general anesthesia is more likely to resemble physiologic conditions in the perioperative phase (including the postoperative ICU phase); e.g., cerebral oxygen delivery and consumption of an awake pediatric patient in the ward a day before surgery might be substantially different than under conditions in the surgical or ICU setting. As such, directing ScO₂ monitoring and treatment upon ScO₂ obtained during stable conditions in an equivalent setting might yield more realistic treatment goals for postoperative hemodynamic management. Nevertheless, to our knowledge, the association between pre- and post-induction ScO₂ has not been documented previously, neither has the association of both of these values with postoperative outcome. This issue on “personalized” goal-directed hemodynamic management requires further elucidation in future trials.

Intraoperative ScO₂ desaturations

In contrast to our observation on the importance of baseline ScO₂ on outcome, we found only a minimal association

between intraoperative ScO₂ decrease and outcome—only for the length of cerebral desaturation periods intraoperatively, and not for its severity (low values). This observation is surprising, as in a substantial number of patients (> 80%), ScO₂ values did decrease below their individual baseline at least some point during surgery, and it was shown that intraoperative cerebral desaturations are associated with reduced postoperative neurologic functioning.^{28,29} Another study in infants showed abnormalities in psychomotor development and brain magnetic resonance imaging, one year after surgery, in those patients with perioperative periods of diminished cerebral oxygen delivery.³⁰ A more recent multicentre international study measuring the incidence of low regional cerebral oxygenation using NIRS in infants during anesthesia for non-cardiac surgery found that mild and moderate cerebral and arterial desaturations occur frequently, but they were unlikely associated with learning and behavioral abnormalities.³¹

An important consideration is that the attending anesthesiologist was not blinded to ScO₂ readings. In fact, ScO₂ monitoring was intentionally applied and was actually used, together with measurement of other variables such as mean arterial pressure and etCO₂, for guiding hemodynamic management. Hence, an assumed association between intraoperative ScO₂ desaturation and postoperative outcome is likely to be blunted to some extent, as intraoperative management may have prevented more serious ScO₂ desaturations than those observed, also by additional interventions such as the transfusion of blood and the monitoring of other vital aspects, e.g., processed electroencephalographic depth-of-anesthesia monitoring, cardiac ultrasound, etc. Hence, the true association between (temporal) decreases in ScO₂ and outcome might be underemphasized in our study given that it is likely that in case of ScO₂ decreases, prompt action(s) were taken for correction, maybe even before actual desaturation occurred; e.g., in another setting in low birth weight patients ($n = 59$) who were randomized to receive either dopamine or epinephrine, distinct drug-related changes were seen in cerebral hemodynamics,³² while in another study³³ intraoperative ScO₂ desaturations were linked with concomitant drops in mean arterial blood pressure. Like in adult cardiac surgery,³⁴ a prospective validation of the use of continuous ScO₂ monitoring—and the effects of vasopressors and/or inotropes in optimizing ScO₂ and improving outcome in CCS—is still required.

Study limitations

First, this study is a historical cohort study with all the inherent disadvantages; e.g., in most cases ScO₂ was measured unilaterally, while bilateral readings were

obtained in all cases in the ideal setting. The choice whether ScO₂ was measured uni- or bilaterally was, however, made by the attending anesthesiologist, most likely depending on patient characteristics and personal preference, as there is no uniform agreement when to assess ScO₂ uni- or bilaterally.^{35–37} Also, while the analysis was based on historical data and outcome variables that were defined *a priori* or before study initiation, we only assessed lengths of stay, duration of MV, and mortality—not direct measures of neurologic functioning according to uniform definitions.³⁸

Second, our regression model was constructed to identify the strength of the association between NIRS-derived ScO₂ values and outcome variables using a stepwise logistic regression model. In addition, the use of stepwise regression models like the one used in this study may suffer from substantial limitations described elsewhere,^{39,40} which may result in an “overestimation” of the observed associations and their robustness. Given that in this exploratory study was derived from a relatively large data set, for which only five or fewer predictors were defined, the influence of these limitations on the outcome of our analysis is substantially reduced, although it is unknown to what extent. The additional influence of residual confounding, i.e., other variables that are not taken into account but simultaneously affect outcome variables, cannot be determined based on the analysis that we performed. For example, age is intrinsically involved in the underlying cardiac pathology, the indication for CCS, and supposedly, in the risk of morbidity and mortality itself, but was not included in the model itself.¹⁴

Third, the ScO₂ AUC relative to baseline was calculated using an automated algorithm after elimination of artefacts. Here, the accuracy of the AUC and its derived variable (TWA) is as “good” as the data on which it is based, and is primarily dependent on the availability of ScO₂ in a high frequency. For instance, a gap of ScO₂ data availability for 30 sec indicated that ScO₂ was stable for that time period, and AUC calculations were based on these interpolated values.

Fourth, we have not investigated postoperative values of ScO₂. Various studies have looked at these values and their relation with postoperative outcome, at least during the first 24–48 hr after CCS during stay on the ICU stay.^{11,41–43} It was shown in these studies that children with low ScO₂ values were hospitalized longer and suffered more complications, including neurologic impairment than children with higher values did. In one study,¹¹ the mean cerebral NIRS of less than 56% over the first 48 hr after surgery yielded a sensitivity of 75% and a specificity of 79% to predict those at risk for subsequent adverse events. In adults,²⁹ the incidence of prolonged cerebral desaturation is significantly higher in patients with

cognitive decline. It was suggested to implement NIRS as a standardized tool for monitoring ScO₂ in the postoperative period, since time points such as right after weaning from CPB or a few hours postoperatively helped in predicting complications in the early postoperative phase.^{41,42,44,45}

Finally, a study in healthy adults showed that ScO₂ readings can be affected by extracranial “contamination”, suggesting that ScO₂ does not solely reflect cerebral oxygenation.⁴⁶ This issue has, however, not yet been studied in pediatric patients, and it is unknown to which extent this might have impacted the observed associations in our study.

Conclusion

A low baseline cerebral oxygen saturation measured after tracheal intubation and before surgical incision was associated with adverse postoperative outcomes in pediatric patients undergoing CCS, while the length of intraoperative cerebral desaturation was only minimally associated with postoperative outcome. Surprisingly, the severity of intraoperative cerebral desaturation was not associated with postoperative outcome. Furthermore, baseline ScO₂ values predicted mortality to some extent, equivalent to the already established STS-EACTA score. Therefore, measuring baseline ScO₂ after tracheal intubation, might help identify patients at increased perioperative risk.

Disclosures Thomas W.L. Scheeren received research grants and honoraria from Edwards Lifesciences (Irvine, CA, USA) and Masimo Inc. (Irvine, CA, USA) for consulting and lecturing, and from Pulsion Medical Systems SE (Feldkirchen, Germany) for lecturing in the past. Thomas W.L. Scheeren is an editor of the Journal of Clinical Monitoring and Computing and is an associate editor for Anesthesia & Analgesia. All other authors report no conflicts of interest.

Funding statement Departmental funds only.

Editorial responsibility This submission was handled by Dr. Philip M. Jones, Associate Editor, *Canadian Journal of Anesthesia*.

Open Access This article is licensed under a Creative Commons Attribution-NonCommercial 4.0 International License, which permits any non-commercial use, sharing, adaptation, distribution and reproduction in any medium or format, as long as you give appropriate credit to the original author(s) and the source, provide a link to the Creative Commons licence, and indicate if changes were made. The images or other third party material in this article are included in the article’s Creative Commons licence, unless indicated otherwise in a credit line to the material. If material is not included in the article’s Creative Commons licence and your intended use is not permitted by statutory regulation or exceeds the permitted use, you will need to obtain permission directly from the copyright holder. To view a copy of this licence, visit <http://creativecommons.org/licenses/by-nc/4.0/>.

Author contributions Marco Modestini helped in designing the study, analyzing and interpreting the data, and drafting and revising the manuscript. Lisa Hoffmann helped in collecting, analyzing, and interpreting the data and drafting and revising the manuscript. Caren Niezen helped in drafting and revising the manuscript. Benedetta Armocida helped in collecting data, and drafting and revising the manuscript. Jaap Jan Vos helped in analyzing and interpreting the data, and drafting and revising the manuscript. Thomas W.L. Scheeren helped in designing the study, analyzing and interpreting the data, and drafting and revising the manuscript.

References

- Kempny A, Dimopoulos K, Uebing A, et al. Outcome of cardiac surgery in patients with congenital heart disease in England between 1997 and 2015. *PLoS One* 2017; . <https://doi.org/10.1371/journal.pone.0178963>.
- Spector LG, Menk JS, Knight JH, et al. Trends in long-term mortality after congenital heart surgery. *J Am Coll Cardiol* 2018; 71: 2434-46.
- DeSena HC, Nelson DP, Cooper DS. Cardiac intensive care for the neonate and child after cardiac surgery. *Curr Opin Cardiol* 2015; 30: 81-8.
- Joffe R, Al Aklabi M, Bhattacharya S, et al. Cardiac surgery-associated kidney injury in children and renal oximetry. *Pediatr Crit Care Med* 2018; 19: 839-45.
- Jafri SK, Ehsan L, Abbas Q, et al. Frequency and outcome of acute neurologic complications after congenital heart disease surgery. *J Pediatr Neurosci* 2017; 12: 328-31.
- Agarwal HS, Wolfram KB, Saville BR, Donahue BS, Bichell DP. Postoperative complications and association with outcomes in pediatric cardiac surgery. *J Thorac Cardiovasc Surg* 2014; 148: 609-16.e1.
- Pasquali SK, He X, Jacobs ML, et al. Excess costs associated with complications and prolonged length of stay after congenital heart surgery. *Ann Thorac Surg* 2014; 98: 1660-6.
- Wong JJ, Chen CK, Moorakonda RB, et al. Changes in near-infrared spectroscopy after congenital cyanotic heart surgery. *Front Pediatr* 2018; DOI: <https://doi.org/10.3389/fped.2018.00097>.
- Sood BG, McLaughlin K, Cortez J. Near-infrared spectroscopy: applications in neonates. *Semin Fetal Neonatal Med* 2015; 20: 164-72.
- Uebing A, Furck AK, Hansen JH, et al. Perioperative cerebral and somatic oxygenation in neonates with hypoplastic left heart syndrome or transposition of the great arteries. *J Thorac Cardiovasc Surg* 2011; 142: 523-30.
- Phelps HM, Mahle WT, Kim D, et al. Postoperative cerebral oxygenation in hypoplastic left heart syndrome after the Norwood procedure. *Ann Thorac Surg* 2009; 87: 1490-4.
- Jacobs JP, Mayer JE Jr, Pasquali SK, et al. The Society of Thoracic Surgeons Congenital Heart Surgery Database: 2018 update on outcomes and quality. *Ann Thorac Surg* 2018; 105: 680-9.
- Kurth CD, Steven JL, Montenegro LM, et al. Cerebral oxygen saturation before congenital heart surgery. *Ann Thorac Surg* 2001; 72: 187-92.
- Fenton KN, Freeman K, Glogowski K, Fogg S, Duncan KF. The significance of baseline cerebral oxygen saturation in children undergoing congenital heart surgery. *Am J Surg* 2005; 190: 260-3.
- Covidien llc. Operations manual INVOS® system, model 5100C. Mansfield, Massachusetts, USA, 2013. Available at URL: http://www.wemed1.com/downloads/dl/file/id/7947/product/10495/manual_for_mo_s_5100c.pdf (accessed April 2020).
- O'Brien SM, Clarke DR, Jacobs JP, et al. An empirically based tool for analyzing mortality associated with congenital heart surgery. *J Thorac Cardiovasc Surg* 2009; 138: 1139-53.
- Jacobs JP, Jacobs ML, Maruszewski B, et al. Initial application in the EACTS and STS congenital heart surgery databases of an empirically derived methodology of complexity adjustment to evaluate surgical case mix and results. *Eur J Cardiothorac Surg* 2012; 42: 775-80.
- Maheshwari K, Khanna S, Bajracharya GR, et al. A randomized trial of continuous noninvasive blood pressure monitoring during noncardiac surgery. *Anesth Analg* 2018; 127: 424-31.
- Saito J, Takekawa D, Kawaguchi J, et al. Preoperative cerebral and renal oxygen saturation and clinical outcomes in pediatric patients with congenital heart disease. *J Clin Monit Comput* 2019; 33: 1015-22.
- Jacobs JP, O'Brien SM, Pasquali SK, et al. The importance of patient-specific preoperative factors: an analysis of the Society of Thoracic Surgeons Congenital Heart Surgery Database. *Ann Thorac Surg* 2014; 98: 1653-9.
- Heringlake M, Garbers C, Kabler JH, et al. Preoperative cerebral oxygen saturation and clinical outcomes in cardiac surgery. *Anesthesiology* 2011; 114: 58-69.
- Hoffman GM, Ghanayem NS, Scott JP, et al. Postoperative cerebral and somatic near-infrared spectroscopy saturations and outcome in hypoplastic left heart syndrome. *Ann Thorac Surg* 2017; 103: 1527-35.
- Murkin JM, Adams SJ, Novick RJ, et al. Monitoring brain oxygen saturation during coronary bypass surgery: a randomized, prospective study. *Anesth Analg* 2007; 104: 51-8.
- Murkin JM, Arango M. Near-infrared spectroscopy as an index of brain and tissue oxygenation. *Br J Anaesth* 2009; 103(Suppl 1): i3-13.
- Ghosal S, Trivedi J, Chen J, et al. Regional cerebral oxygen saturation level predicts 30-day mortality rate after left ventricular assist device surgery. *J Cardiothorac Vasc Anesth* 2018; 32: 1185-90.
- Lee JH, Jang YE, Song IK, et al. Near-infrared spectroscopy and vascular occlusion test for predicting clinical outcome in pediatric cardiac patients: a prospective observational study. *Pediatr Crit Care Med* 2018; 19: 32-9.
- Murkin JM. Cerebral oximetry: monitoring the brain as the index organ. *Anesthesiology* 2011; 114: 12-3.
- Sanchez-de-Toledo J, Chrysostomou C, Munoz R, et al. Cerebral regional oxygen saturation and serum neuromarkers for the prediction of adverse neurologic outcome in pediatric cardiac surgery. *Neurocrit Care* 2014; 21: 133-9.
- Slater JP, Guarino T, Stack J, et al. Cerebral oxygen desaturation predicts cognitive decline and longer hospital stay after cardiac surgery. *Ann Thorac Surg* 2009; 87: 36-45.
- Kussman BD, Wypij D, Laussen PC, et al. Relationship of intraoperative cerebral oxygen saturation to neurodevelopmental outcome and brain magnetic resonance imaging at 1 year of age in infants undergoing biventricular repair. *Circulation* 2010; 122: 245-54.
- Olbrecht VA, Skowno J, Marchesini V, et al. An international, multicenter, observational study of cerebral oxygenation during infant and neonatal anesthesia. *Anesthesiology* 2018; 128: 85-96.
- Pellicer A, Valverde E, Elorza MD, et al. Cardiovascular support for low birth weight infants and cerebral hemodynamics: a randomized, blinded, clinical trial. *Pediatrics* 2005; 115: 1501-12.
- Razlevice I, Rugeyte DC, Strumylaite L, Macas A. Assessment of risk factors for cerebral oxygen desaturation during neonatal and infant general anesthesia: an observational, prospective study.

- BMC Anesthesiol 2016; DOI: <https://doi.org/10.1186/s12871-016-0274-2>.
34. *Grocott HP*. Commentary: Optimizing cerebral oxygenation in cardiac surgery: neurocognitive and perioperative outcomes. *J Thorac Cardiovasc Surg* 2020; 159: 956-7.
 35. *de la Matta M, Dominguez A*. Prediction of bilateral cerebral oxygen desaturations from a single sensor in adult cardiac surgery: a prospective observational study. *Eur J Anaesthesiol* 2018; 35: 365-71.
 36. *Grocott HP*. Cerebral oximetry monitoring. To guide physiology, avert catastrophe or both? *Eur J Anaesthesiol* 2019; 36: 82-3.
 37. *de la Matta M, Dominguez A*. Reply to: Cerebral oximetry monitoring. To guide physiology, avert catastrophe or both? *Eur J Anaesthesiol* 2019; DOI: <https://doi.org/10.1097/eja.0000000000000896>.
 38. *Evered L, Silbert B, Knopman DS, et al*. Recommendations for the nomenclature of cognitive change associated with anaesthesia and surgery-2018. *Can J Anesth* 2018; 65: 1248-57.
 39. *Lewis ME*. Stepwise versus hierarchical regression: pros and cons. Southwest Educational Research Association 2007 Annual Meeting, San Antonio, USA. Available from URL: https://www.researchgate.net/publication/235464734_Stepwise_versus_hierarchical_regression_Pros_and_cons (accessed April 2020).
 40. *Flom P*. Stopping stepwise: why stepwise selection is bad and what you should use instead. *Towards Data Science* 2018. Available from URL: <https://towardsdatascience.com/stopping-stepwise-why-stepwise-selection-is-bad-and-what-you-should-use-instead-90818b3f52df>. (accessed April 2020).
 41. *Flechet M, Guiza F, Vlasselaers D, et al*. Near-infrared cerebral oximetry to predict outcome after pediatric cardiac surgery: a prospective observational study. *Pediatr Crit Care Med* 2018; 19: 433-41.
 42. *Hansen JH, Schlangen J, Armbrust S, et al*. Monitoring of regional tissue oxygenation with near-infrared spectroscopy during the early postoperative course after superior cavopulmonary anastomosis. *Eur J Cardiothorac Surg* 2013; 43: 37-43.
 43. *Spaeder MC, Klugman D, Skurow-Todd K, et al*. Perioperative near-infrared spectroscopy monitoring in neonates with congenital heart disease: relationship of cerebral tissue oxygenation index variability with neurodevelopmental outcome. *Pediatr Crit Care Med* 2017; 18: 213-8.
 44. *Ghanayem NS, Hoffman GM*. Near infrared spectroscopy as a hemodynamic monitor in critical illness. *Pediatr Crit Care Med* 2016; 17: 201-6.
 45. *Vida VL, Tessari C, Cristante A, et al*. The role of regional oxygen saturation using near-infrared spectroscopy and blood lactate levels as early predictors of outcome after pediatric cardiac surgery. *Can J Cardiol* 2016; 32: 970-7.
 46. *Davie SN, Grocott HP*. Impact of extracranial contamination on regional cerebral oxygen saturation: a comparison of three cerebral oximetry technologies. *Anesthesiology* 2012; 116: 834-40.

Publisher's Note Springer Nature remains neutral with regard to jurisdictional claims in published maps and institutional affiliations.