

## University of Groningen

### Tailoring care for older adults

Rietkerk, Wanda

DOI:  
[10.33612/diss.112158333](https://doi.org/10.33612/diss.112158333)

**IMPORTANT NOTE: You are advised to consult the publisher's version (publisher's PDF) if you wish to cite from it. Please check the document version below.**

*Document Version*  
Publisher's PDF, also known as Version of record

*Publication date:*  
2020

[Link to publication in University of Groningen/UMCG research database](#)

*Citation for published version (APA):*  
Rietkerk, W. (2020). *Tailoring care for older adults: understanding older adults' goals and preferences*. [Thesis fully internal (DIV), University of Groningen]. University of Groningen.  
<https://doi.org/10.33612/diss.112158333>

#### Copyright

Other than for strictly personal use, it is not permitted to download or to forward/distribute the text or part of it without the consent of the author(s) and/or copyright holder(s), unless the work is under an open content license (like Creative Commons).

The publication may also be distributed here under the terms of Article 25fa of the Dutch Copyright Act, indicated by the "Taverne" license. More information can be found on the University of Groningen website: <https://www.rug.nl/library/open-access/self-archiving-pure/taverne-amendment>.

#### Take-down policy

If you believe that this document breaches copyright please contact us providing details, and we will remove access to the work immediately and investigate your claim.

Downloaded from the University of Groningen/UMCG research database (Pure): <http://www.rug.nl/research/portal>. For technical reasons the number of authors shown on this cover page is limited to 10 maximum.

# **Tailoring care for older adults**

*Understanding older adults' goals and preferences*

**Wanda Rietkerk**

The studies described in this thesis were financially supported by the Friesland Foundation. The funding body was not involved in the design of the study, the collection, analysis and interpretation of the data nor in writing the manuscript.

STICHTING

**De Friesland**

STEUNT INNOVATIES IN DE ZORG

Writing and publishing of this manuscript was financially supported by the SBOH, University Medical Center Groningen, and University of Groningen



**rijksuniversiteit  
groningen**

ISBN: 978-94-6332-609-4

ISBN: 978-94-6332-611-7

Lay-out and print: GVO drukkers & vormgevers, Ede

Graphic design: Loes van de Kraats - Kema

Illustrations: Leonie Haas, De merkarchitect - Visuele Communicatie

Copyright © 2020 W. Rietkerk, the Netherlands

All rights reserved. Whenever you are willing to copy, reproduce or publish parts of this thesis, contact the author.

No graphics may be reproduced, stored in a retrieval system, or transmitted in any form or by any means, without the written permission of the designer.



rijksuniversiteit  
 groningen

# Tailoring care for older adults

Understanding older adults' goals and preferences

## Proefschrift

ter verkrijging van de graad van doctor aan de  
Rijksuniversiteit Groningen  
op gezag van de  
rector magnificus prof. dr. C. Wijmenga  
en volgens besluit van het College voor Promoties.

De openbare verdediging zal plaatsvinden op  
dinsdag 7 juli 2020 om 14.30 uur door

**Wanda Rietkerk**

geboren op 4 mei 1985  
te Amersfoort

**Promotores**

Prof. dr. S. U. Zuidema

Prof. dr. J. P. J. Slaets

Prof. dr. D. L. Gerritsen

**Copromotor**

Dr. K. Wynia (in commemoration)

**Beoordelingscommissie**

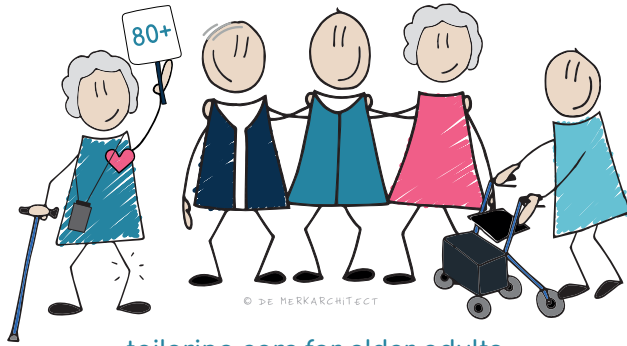
Prof. dr. B. C. van Munster

Prof. dr. G. I. J. M. van Kempen

Prof. dr. M.E. Numans

## TABLE OF CONTENTS

1.	Introduction	7
<b>Part I: Outcomes of goal setting within proactive care services</b>		<b>23</b>
2.	Effects of increasing the involvement of community-dwelling frail older adults in a proactive assessment service: a pragmatic trial	25
3.	Goal planning in person-centred care supports older adults receiving case management to attain their health-related goals	47
<b>Part II: Mechanisms and context of a proactive care service</b>		<b>73</b>
4.	Explaining experiences of community-dwelling older adults with a pro-active comprehensive geriatric assessment program - a thorough evaluation by interviews	75
5.	Increasing older adult involvement in geriatric assessment: a mixed-methods process evaluation	113
6.	Older adult preferences for health decision engagement and health behaviour	135
7.	General Discussion	151
8.	Scientific summary	177
	Wetenschappelijke samenvatting	181
	List of abbreviations	187
	Dankwoord	189
	Curriculum Vitae	193



tailoring care for older adults



integrated  
person-centred  
care

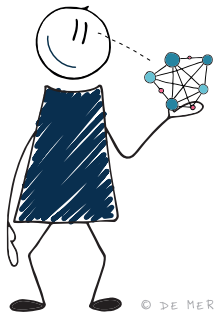


proactive



empowerment

realist  
evaluation - approach



outcomes



mechanisms



context