

University of Groningen

Complete mitochondrial genome characterisation of *Ratha longimana* (H. Milne Edwards, 1834) from the western Atlantic Ocean, with a phylogeny of the Xanthidae (Decapoda: Brachyura)

van der Meij, S E T ; Xu, Tao

Published in:
Journal of Crustacean Biology

DOI:
[10.1093/jcbiol/ruae058](https://doi.org/10.1093/jcbiol/ruae058)

IMPORTANT NOTE: You are advised to consult the publisher's version (publisher's PDF) if you wish to cite from it. Please check the document version below.

Document Version
Publisher's PDF, also known as Version of record

Publication date:
2024

[Link to publication in University of Groningen/UMCG research database](#)

Citation for published version (APA):

van der Meij, S. E. T., & Xu, T. (2024). Complete mitochondrial genome characterisation of *Ratha longimana* (H. Milne Edwards, 1834) from the western Atlantic Ocean, with a phylogeny of the Xanthidae (Decapoda: Brachyura). *Journal of Crustacean Biology*, 44(3), Article ruae058.
<https://doi.org/10.1093/jcbiol/ruae058>

Copyright

Other than for strictly personal use, it is not permitted to download or to forward/distribute the text or part of it without the consent of the author(s) and/or copyright holder(s), unless the work is under an open content license (like Creative Commons).

The publication may also be distributed here under the terms of Article 25fa of the Dutch Copyright Act, indicated by the "Taverne" license. More information can be found on the University of Groningen website: <https://www.rug.nl/library/open-access/self-archiving-pure/taverne-amendment>.

Take-down policy

If you believe that this document breaches copyright please contact us providing details, and we will remove access to the work immediately and investigate your claim.

Downloaded from the University of Groningen/UMCG research database (Pure): <http://www.rug.nl/research/portal>. For technical reasons the number of authors shown on this cover page is limited to 10 maximum.



Complete mitochondrial genome characterisation of *Ratha longimana* (H. Milne Edwards, 1834) from the western Atlantic Ocean, with a phylogeny of the Xanthidae (Decapoda: Brachyura)

Sancia E.T. van der Meij^{1,2}  and Tao Xu¹ 

¹Groningen Institute of Evolutionary Life Science, University of Groningen, Groningen, The Netherlands

²Naturalis Biodiversity Center, Leiden, The Netherlands

Correspondence: T. Xu; e-mail: parksonxt@163.com

ABSTRACT

The longhand rubble crab *Ratha longimana* inhabits coral reefs and rocky shores in the subtropical and tropical western Atlantic Ocean. This species was long considered to be the only chlorodielline species present in the area, but has since been transferred to the genus *Ratha* Lasley, Lai & Thoma, 2013 and is now thought to belong to an undescribed subfamily within Xanthidae MacLeay, 1838. Here we provide a complete mitochondrial assemblage and characterisation of this species. The assembled mitochondrial genome (hereafter mitogenome) of *R. longimana* is 15,819 bp in length and contains 13 protein coding genes (PCGs), 22 transfer RNA (tRNA) genes, and two ribosomal RNA (rRNA) genes. The 22 tRNA genes range from 62 to 69 bp in length. A mitochondrial gene order (MGO) analysis revealed a transposition of the tRNA genes Val (V) and 12S rRNA (rrnS) when compared to the ancestral brachyuran gene order, which is in line with earlier studies on xanthoid mitogenomes. Mitogenome data for xanthid crabs (as well as the superfamily Xanthoidea MacLeay, 1838) are currently scarce considering the species richness of the family, limiting the options for phylogenomic studies. This is partially remedied here by providing a new genomic resource for *R. longimana*.

KEY WORDS: Chlorodiellinae, Crustacea, gene order, mitochondrial assemblage

INTRODUCTION

The xanthid species *Ratha longimana* (H. Milne Edwards, 1834), commonly referred to as the longhand rubble crab, inhabits coral reef and rocky shore habitats in the tropical and subtropical western Atlantic Ocean. This species has been recorded from southern Florida, throughout the Caribbean, to the north coast of Brazil (Lasley *et al.*, 2013), and occurs at shallow depths as well as to 154 m in the Lesser Antilles (Poupin, 2018). This crab was originally described as *Chlorodius longimanus*, but Lasley *et al.* (2013) placed the species in *Ratha* Lasley, Lai & Thoma, 2013, based on morphological and molecular data. A multimarker approach on the subfamily Chlorodiellinae revealed its polyphyletic nature and showed that *Ratha* likely needs to be excluded from the subfamily. Its position in Xanthidae MacLeay, 1838 was nevertheless unclear and the species was therefore considered as *incertae familiae* (Lasley *et al.*, 2015). Mendoza *et al.* (2022) consider *Ratha longimana* a member of a yet undescribed xanthid

subfamily (provisionally termed subfamily X1). The exclusion of *Ratha* from Chlorodiellinae Ng & Holthuis, 2007 was not followed by Poore & Ah Yong (2023), who retained it as a member of this subfamily.

Xanthoid crabs are important ecological components of marine ecosystems. They occupy various ecological niches as symbionts, primary and secondary consumers, and serve as a food source for many other marine taxa (Mendoza *et al.*, 2022). The superfamily Xanthoidea MacLeay, 1838 is considered monophyletic and to date has 764 extant species in seven families: Antrocarcinidae Ng & Chia, 1994 (4 species), Garthiellidae Mendoza & Manuel-Santos, 2012 (3 species), Linnaeoxanthidae Števcic, 2005 (2 species), Nanocassiopidae Števcic, 2013 (12 species), Panopeidae Ortmann, 1893 (68 species), Pseudorhombilidae Alcock, 1900 (64 species), and Xanthidae MacLeay, 1838 (611 species) (DecaNet, 2024). The Xanthidae is by far the largest family of the seven xanthoid families, and one of the

five largest decapod families (De Grave *et al.*, 2023). The family comprises 13 subfamilies (Ng *et al.*, 2008; DecaNet, 2024). The number of recognized families and subfamilies in the Xanthoidea, however, are subject of ongoing taxonomic revisions and drastic restructuring of the existing xanthid subfamily classification is impending (Mendoza *et al.*, 2022).

Our aim was to assemble the mitogenome of *Ratha longimana* in order to increase the amount of genetic information available for the species. Moreover, we conducted a mitochondrial gene order (MGO) analysis, comparing the MGO of *R. longimana* with the ancestral Brachyura MGO, and we provide a phylogeny of Xanthoidea based on all the currently available mitogenomes for this superfamily to facilitate future research on the classification of *R. longimana* as well as subfamilial classification in Xanthidae.

MATERIAL AND METHODS

Sampling

Five specimens of *R. longimana* were collected from Piscadera Bay, Curaçao (in front of CARMABI research station; 12°7′18.1704″N, 68°58′10.66″W) on 14 March 2022, and preserved in 80% ethanol. Tissue from one specimen was used for *cox1* barcoding (partial, Folmer *et al.*, 1994), a second collected specimen was sent to BGI (BGI Tech Solutions, Hong Kong) for DNA extraction following standard manufacturer's protocol and sequenced in a DNBseq system (MGI, Hong Kong) using a short-insert library in a 2 × 150 cycle. A total of 119,311,942 pairs of (PE) reads were generated and used in the subsequent analyses. The specimen used for Sanger sequencing and the remaining three specimens are vouchered at the University of Groningen, Groningen, The Netherlands.

Mitochondrial genome assembly and annotation

The mitogenome was *de novo* assembled using NOVOPlasty 4.3.1 (Dierckxsens *et al.*, 2017) on the Hábrók high performance computing cluster of the University of Groningen. The assemblies used a seed of the *cox1* gene of the barcoded *R. longimana* specimen from Curaçao. The assembled mitogenome was annotated using MITOS (Bernt *et al.*, 2013) on the Galaxy server, and subsequently start and stop codon corrections were done manually in Geneious Prime 2023.1.2 using *Atergatis floridus* as a reference mitogenome (GenBank accession numbers are provided in Table 1).

Mitochondrial gene order

The mitochondrial gene order (MGO) of *R. longimana* was compared to that of the brachyuran ground-pattern MGO, the most common gene order within Brachyura (Wang *et al.*, 2018).

Phylogenetic analysis

A concatenated dataset consisting of 13 protein coding genes (PCGs) and two ribosomal RNA genes (rRNA; rrnS: 12S ribosomal RNA and rrnL: 16S ribosomal RNA) were used in the phylogenetic analyses. These genes were aligned separately using MAFFT v.7.407 (Katoh & Standley, 2013), and PartitionFinder 2 was applied to detect the best partition scheme, as well as the best-fit substitute models for the

respective partitions (Supplementary material Table S2). All available Xanthoidea mitogenomes on GenBank were included in this analysis, and the three panopeid species, *Eurypanopeus depressus* (Smith, 1869), *Panopeus herbstii* H. Milne Edwards, 1834, and *Rhithropanopeus harrisi* (Gould, 1841) were used as outgroups (Table 1). Maximum likelihood (ML) and Bayesian Inference (BI) approaches were used for the phylogenetic analyses. ML was inferred in IQ-TREE v.1.6.8 (Nguyen *et al.*, 2015) with 20,000 ultrafast bootstraps. MrBayes v.3.2.7 (Ronquist *et al.*, 2012) was used for the BI analysis. Two independent Markov Chain Monte Carlo (MCMC) runs were performed, each with four chains for 1 million generations and sampled every 1,000 iterations. The average standard deviation of split frequencies was 0.03. The trees were visualised in FigTree v.1.4.2 (<http://tree.bio.ed.ac.uk/software/figtree/>).

RESULTS

Mitochondrial genome

The assembled mitogenome of *Ratha longimana* is 15,819 bp in length and contains 13 protein coding genes, 22 transfer RNA (tRNA) genes, and two ribosomal RNA (rRNA) genes. The 22 tRNA genes range 62–69 bp in length. The nucleotide composition of the entire mitochondrial genome of *R. longimana* revealed an overall A+T bias (71.9%; base composition: A = 33.6%, T = 38.3%, C = 17.6%, and G = 10.4%). The assembled mitogenome is visualised in Figure 1, while details on the arrangement and annotation of the mitogenome can be found in Supplementary material Table S3.

Mitochondrial gene order

The MGO analysis revealed the transposition of the tRNA genes Val (V) and 12S rRNA (*rrnS*), when compared to that of the brachyuran basic mitochondrial gene order (Fig. 2).

Phylogenetic analysis

The BI and ML analyses generated phylogenetic trees with similar overall topologies, the three species of Panopeidae were used as outgroups (Fig. 3, Supplementary material S1). *Ratha longimana* is placed basal to the main clade containing the majority of xanthid species. The subfamilies Cymoinae Alcock, 1898 and Polydectinae Dana, 1851 are not included in this main clade, but instead cluster together with full support.

DISCUSSION

The nucleotide composition of the entire mitochondrial genome was A+T biased (71.9%), which is in line with that of other brachyurans (e.g. Ki *et al.*, 2009; Wang *et al.*, 2018; Duan *et al.*, 2022; Bravo *et al.*, 2023). An A+T bias is the norm not only in the mitochondrial genomes of most crustaceans and a G+C bias is considered a rare occurrence (but see Tan *et al.*, 2019).

Wang *et al.* (2021) reported that 16 brachyuran families share the ancestral brachyuran MGO, including Xanthidae. Our results nevertheless show that *Ratha longima* has one transposition (tRNA-Val and 12S) compared to the ancestral brachyuran MGO. This result is in agreement with the results of Jennings *et al.* (2021) and Duan *et al.* (2022), who found the same MGO (termed

Table 1. List of species of Xanthoidea included in this study and their GenBank accession numbers. Subfamilial classification is added based on DecaNet (2024), as well as the newly proposed classification by Mendoza *et al.* (2022).

Family	Species	Subfamily (based on WoRMS to DecaNet, 2024)	Subfamily as proposed by Mendoza <i>et al.</i> (2022)	GenBank accession number	Reference
Panopeidae	<i>Eurypanopeus depressus</i> (Smith, 1869)	-	-	MN399962	Jennings <i>et al.</i> , 2021
Panopeidae	<i>Panopeus herbstii</i> H. Milne Edwards, 1834	-	-	MT024990	Jennings <i>et al.</i> , 2021
Panopeidae	<i>Rhithropanopeus harrisi</i> (Gould, 1841)	-	-	MW446897	McDonald <i>et al.</i> , unpublished data
Xanthidae	<i>Actaeodes hirsutissimus</i> (Rüppell, 1830)	Actaeinae	Subfamily X5	OP672436	Gries <i>et al.</i> , 2024
Xanthidae	<i>Atergatis floridus</i> (Linnaeus, 1767)	Zosiminae	Zosiminae	MG792341	Karagozlu <i>et al.</i> , 2018a
Xanthidae	<i>Atergatis integerrimus</i> (Lamarck, 1818)	Zosiminae	Zosiminae	MG792342	Karagozlu <i>et al.</i> , 2018b
Xanthidae	<i>Chlorodiella nigra</i> (Forskål, 1775)	Chlorodiellinae	Etisinae	OP672433	Gries <i>et al.</i> , 2024
Xanthidae	<i>Cymo andreossi</i> (Audouin, 1826)	Cymoinae	Cymoinae	OP672426	Gries <i>et al.</i> , 2024
Xanthidae	<i>Cymo quadrilobatus</i> Miers, 1884	Cymoinae	Cymoinae	OP672425	Gries <i>et al.</i> , 2024
Xanthidae	<i>Etisus anagyptus</i> H. Milne Edwards, 1834	Etisinae	Etisinae	MG751773	Karagozlu <i>et al.</i> , 2018c
Xanthidae	<i>Etisus dentatus</i> (Herbst, 1785)	Etisinae	Etisinae	MW122295	Liu & Shen, 2021
Xanthidae	<i>Etisus laevimanus</i> Randall, 1840	Etisinae	-	NC086869	Lee <i>et al.</i> , unpublished data
Xanthidae	<i>Leptodius exaratus</i> (H. Milne Edwards, 1834)	Xanthinae	? Etisinae (based on <i>Leptodius</i> spp.)	MF198250	Liu <i>et al.</i> , unpublished data
Xanthidae	<i>Leptodius sanguineus</i> (H. Milne Edwards, 1834)	Xanthinae	Etisinae	KT896744	Sung <i>et al.</i> , 2016
Xanthidae	<i>Lybia plumosa</i> Barnard, 1947	Polydectinae	Polydectinae	OP672427	Gries <i>et al.</i> , 2024
Xanthidae	<i>Lybia tessellata</i> (Latreille in Milbert, 1812)	Polydectinae	Polydectinae	OP672424	Gries <i>et al.</i> , 2024
Xanthidae	<i>Macromedaeus distinguendus</i> (De Haan, 1835)	Xanthinae	? Etisinae (based on <i>M. crassimanus</i>)	MW118602	Wang <i>et al.</i> , 2021
Xanthidae	<i>Polydectus cupulifer</i> (Latreille in Milbert, 1812)	Polydectinae	Polydectinae	OP672418	Gries <i>et al.</i> , 2024
Xanthidae	<i>Pseudoliomera</i> sp.	Actaeinae	Subfamily X7	OP672432	Gries <i>et al.</i> , 2024
Xanthidae	<i>Ratha longimana</i> (H. Milne Edwards, 1834)	Chlorodiellinae	Subfamily X1	PP546287	Herein
Xanthidae	<i>Zosimus aeneus</i> (Linnaeus, 1758)	Zosiminae	Zosiminae	OP672435	Gries <i>et al.</i> , 2024

‘XanGo’) for the six xanthoid species used in their studies. The different MGO rearrangements within Eubrachiura highlight the potential use of MGO patterns in studies on higher level classifications in Brachiura (Jennings *et al.*, 2021; Duan *et al.*, 2022).

Our phylogenetic reconstruction (Fig. 3, Supplementary material S1) only contains 18 xanthid species and three panopeid species. The observed clustering of the subfamilies Cymoinae and Polydectinae is, however, in agreement with Mendoza *et al.* (2022), and the clustering of the remaining species aligns well with the proposed new subfamilial classification. *Ratha longimana* clusters separately in the phylogenetic trees (Fig. 3, Supplementary material Fig. S1), which is in line with earlier studies (Lasley *et al.*, 2013; Mendoza *et al.*, 2022). In a study on American mud crabs, Thoma *et al.* (2014) retrieved *R. longimana* in a highly supported clade representing species of Xanthidae *sensu stricto*. Mendoza *et al.* (2022), however, retrieved two clades with western Atlantic (and some tropical eastern Pacific) species: ‘Paraxanthinae’ and subfamily X1, containing *Ratha longimana*.

While the family Xanthidae is most diverse in tropical West and Indo-West Pacific waters, species of this family are also a common component of tropical and subtropical assemblages in the western Atlantic (Serène, 1984). Mitogenome data for the species-rich Xanthidae crabs (as well as for the superfamily Xanthoidea) are currently scarce considering the species richness of the family, limiting the options for meaningful phylomitogenomic studies. To improve our understanding of the phylogenetic position of *R. longimana*, target taxa for obtaining (mito)genomic data include western Atlantic and eastern Pacific species in the subfamilies X1 and ‘Paraxanthinae’ (Thoma *et al.*, 2014; Mendoza *et al.*, 2022).

Mitochondrial genomes offer high species-level characterization, low sequencing costs, and an ease of data handling. Phylomitogenomic studies have so far substantially contributed to our understanding of phylogenetic relationships in brachiuran crabs and beyond (e.g. Wang *et al.*, 2018; Chen *et al.*, 2019; Duan *et al.*, 2022). Moreover, mitogenomic data can provide insights into evolutionary pressures shaping the diversity and abundance

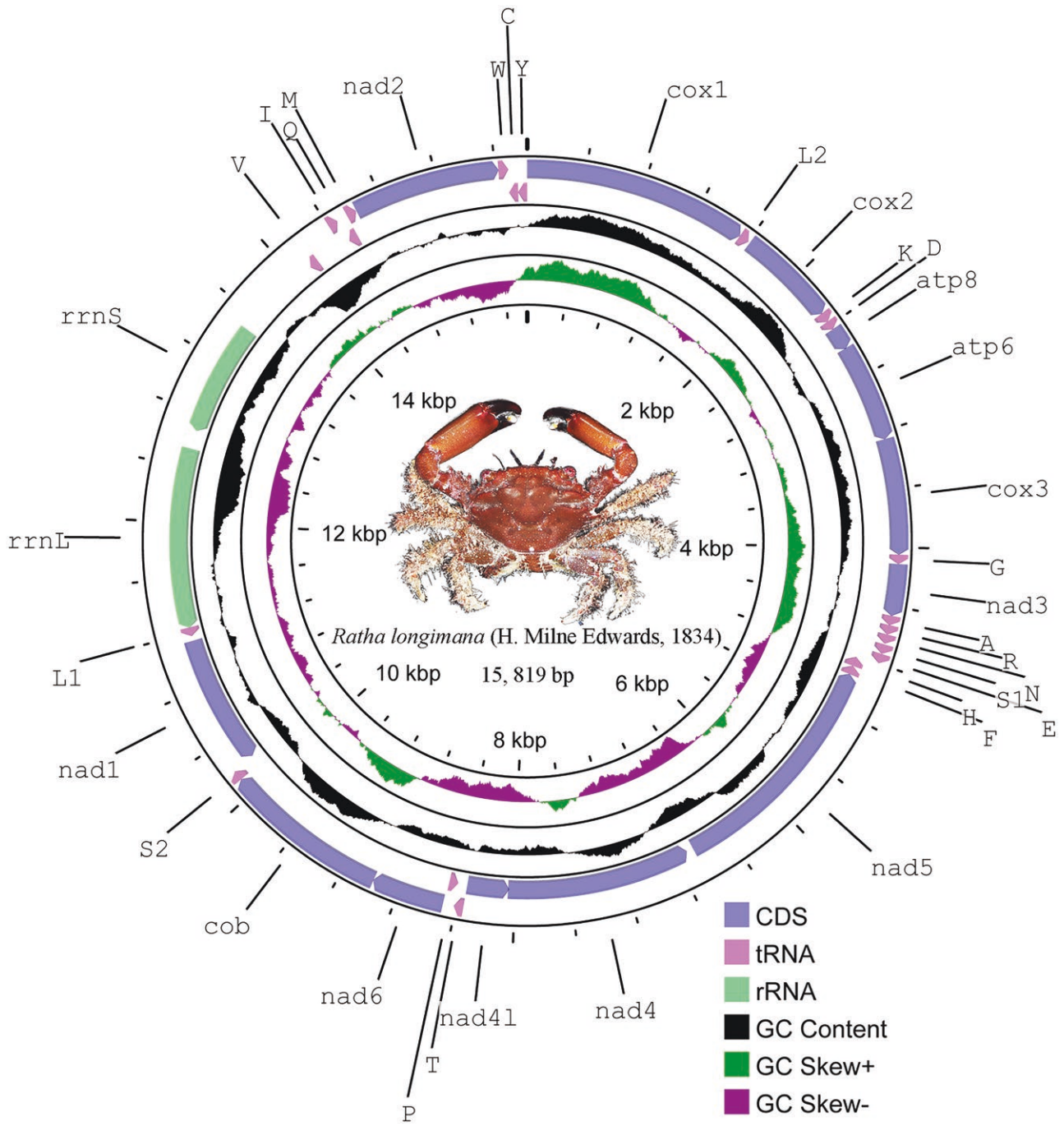


Figure 1. Visualisation of the assembled mitochondrial genome of *Ratha longimana*. Photo by Gustav Paulay/Arthur Anker.

MGO of ancestor Brachyura

cox1 L2 cox2 K D atp8 atp6 cox3 G nad3 A R N S1 E -H -F -nad5 -nad4 -nad41 T -P nad6 cob S2 -nad1 -L1 -rrnL -V -rrnS I I -Q M nad2 W -C -Y

MGO of *Ratha longimana*

cox1 L2 cox2 K D atp8 atp6 cox3 G nad3 A R N S1 E -H -F -nad5 -nad4 -nad41 T -P nad6 cob S2 -nad1 -L1 -rrnL -rrnS -V I I -Q M nad2 W -C -Y

Figure 2. Mitochondrial gene order of ancestor Brachyura (above) and *Ratha longimana* (below), showing the transposition of the tRNA-A genes Val (V) and 12S rRNA (rrnS).

in species-rich taxa, and has, for example, been used in studies focussing on adaptations to life in the deep sea (Ramos *et al.*, 2023), to terrestriality (Lü *et al.*, 2023), to a symbiotic lifestyle

(Xu *et al.*, 2023), as well as in overarching studies on comparative mitochondrial genomics (Gendron *et al.*, 2024). It will thus be possible to shed light on the evolution and diversity of xanthoid

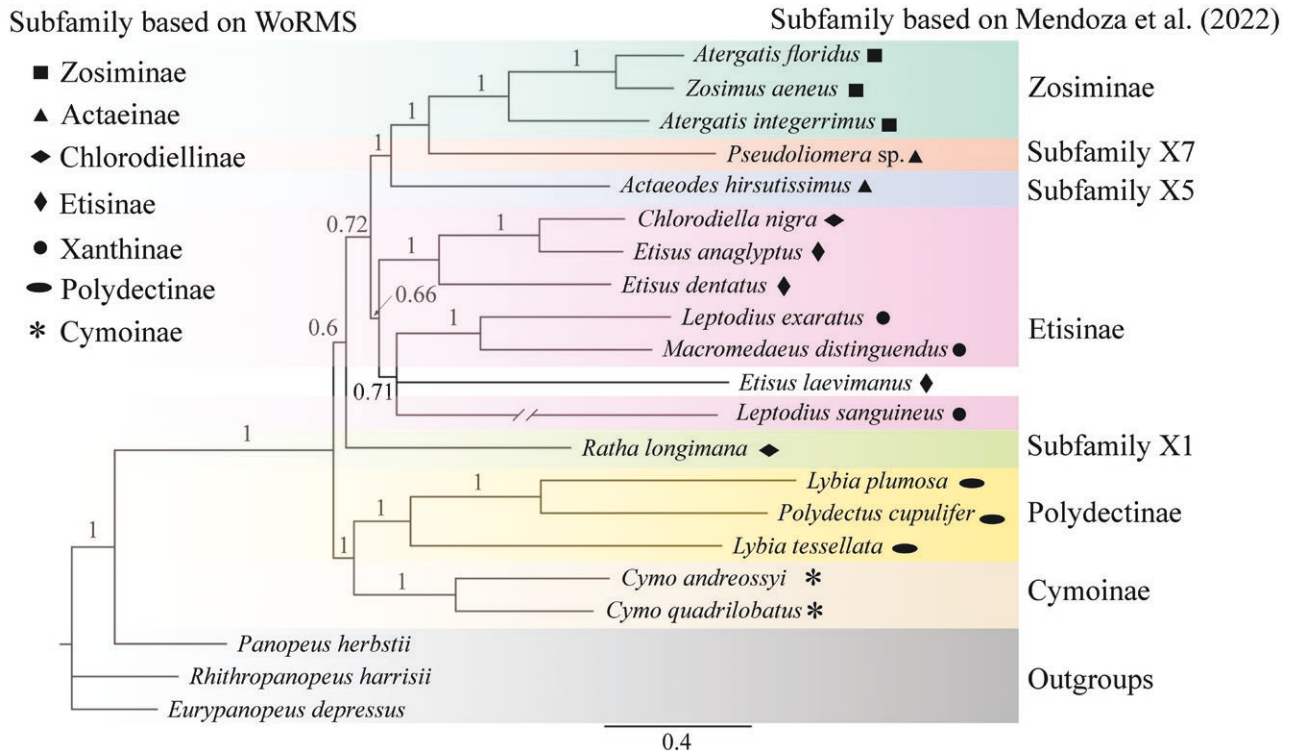


Figure 3. Bayesian phylogenetic tree based on a concatenated dataset of all available Xanthoidea mitogenomes, with three Panopeidae species as outgroups.

crabs and their phylogenetic relationship with other families of Brachyura with the increase in genomic studies of this nature.

SUPPLEMENTARY MATERIAL

Supplementary material is available at *Journal of Crustacean Biology* online.

S1 Figure. Maximum likelihood phylogenetic tree based on the concatenated dataset of all available Xanthidae mitogenomes.

S2 Table. The best partition scheme for the phylogenetic analyses, and the best-fit substitute models for the respective partitions.

S3 Table. The annotation of the mitochondrial genome of *Ratha longimana*.

ACKNOWLEDGEMENTS

We thank Henrique Bravo, Yun Scholten, and Natascha Borgstein (University of Groningen) for their friendship during the fieldwork in Curaçao. The samples of *Ratha longimana* were collected under the CARMABI field permit (government reference 2012/48584). The mitogenome was assembled on the Hábrók high performance computing cluster of the University of Groningen, and we thank the Center for Information Technology (CITRUG) for their support. Gustav Paulay kindly allowed us to use his photo of *R. longimana* in Figure 1. We also thank the two anonymous reviewers for their comments and suggestions that helped better the manuscript.

Funding for the fieldwork in Curaçao was provided by the Academy Ecology Fund (no. KNAWWF/705/ECO202223)

to TX, while the funding for the sequencing came from an FSE grant (University of Groningen) to SvdM. A scholarship to TX was provided by the China Scholarship Council.

REFERENCES

- Audouin, V. 1826. *Explication sommaire des planches de Crustacés de l'Égypte et de la Syrie...*, *Histoire naturelle, Animaux invertébrés*, **Vol. 1** (4). Imprimerie impériale, Paris.
- Barnard, K.H. 1947. Descriptions of new species of South African decapod Crustacea, with notes on synonymy and new records. *Annals and Magazine of Natural History*, Series 11, **13**: 361–392.
- Bernt, M., Donath, A., Jühling, F., Externbrink, F., Florentz, C., Fritzsche, G., Pütz, J., Middendorf, M. & Stadler, P.F. 2013. MITOS: improved *de novo* metazoan mitochondrial genome annotation. *Molecular Phylogenetics and Evolution*, **69**: 313–319.
- Bravo, H., Baeza, J.A. & van der Meij, S.E.T. 2023. Genomic survey sequencing and complete mitochondrial genome of the elkhorn coral crab *Domestia acanthophora* (Desbonne in Desbonne & Schramm, 1867) (Decapoda: Brachyura: Domestiidae). *Journal of Crustacean Biology*, **43**: ruad046. [<https://doi.org/10.1093/jcbiol/ruad046>].
- Chen, J., Xing, Y., Yao, W., Xu, X., Zhang, C., Zhang, Z. & Liu, Q. 2019. Phylomitonomics reconfirm the phylogenetic position of the genus *Metaplex* inferred from the two grapsid crabs (Decapoda: Brachyura: Grapsoidea). *PLoS ONE*, **14**: e0210763 [<https://doi.org/10.1371/journal.pone.0210763>].
- DecaNet. 2024. *DecaNet, World list of Decapoda* [<https://www.decanet.info> accessed 29 August 2024; <https://doi.org/10.14284/600>].
- De Grave, S., Decock, W., Dekeyzer, S., Davie, P.J.F., Fransen, C.H.J.M., Boyko, C.B., Poore, G.C.B., Macpherson, E., Ah Yong, S.T., Crandall, K.A. de Mazancourt, V., Osawa, M., Chan, T.Y., Ng, P.K.L., Lemaitre, R., van der Meij, S.E.T. & Santos S. 2023. Benchmarking global biodiversity of decapod crustaceans (Crustacea: Decapoda). *Journal of*

- Crustacean Biology*, **43**: ruad042 [<https://doi.org/10.1093/jcbiol/ruad042>].
- De Haan, W. 1833–1850. Crustacea. In: *Fauna Japonica...* (P.F. von Siebold, ed.). Lugduni-Batavorum [= Leiden], The Netherlands.
- Dierckxens, N., Mardulyn, P. & Smits, G. 2017. NOVOPlasty: de novo assembly of organelle genomes from whole genome data. *Nucleic Acids Research*, **45**: e18–e18 [<https://doi.org/10.1093/nar/gkw955>].
- Duan, X., Dong, X., Li, J., Lü, J., Guo, B., Xu, K. & Ye, Y. 2022. The complete mitochondrial genome of *Pilumnopus makianus* (Brachyura: Pilumnidae), novel gene rearrangements, and phylogenetic relationships of Brachyura. *Genes*, **13**: 1943 [<https://doi.org/10.3390/genes13111943>].
- Folmer, O., Black, M., Hoeh, W., Lutz, R., & Vrijenhoek, R. 1994. DNA primers for amplification of mitochondrial Cytochrome C oxidase subunit I from diverse metazoan invertebrates. *Molecular Marine Biology and Biotechnology*, **3**: 294–299.
- Forskål, P. 1775. *Descriptiones Animalium, Avium, Amphibiorum, Piscium, Insectorum, Vermium ...* Mölleri, Hafnia [= Copenhagen].
- Gendron, E.M., Qing, X., Sevigny, J.L., Li, H., Liu, Z., Blaxter, M., Powers, T.O., Thomas, W.K. & Porazinska, D.L. 2024. Comparative mitochondrial genomics in Nematoda reveal astonishing variation in compositional biases and substitution rates indicative of multi-level selection. *BMC Genomics*, **25**: 615 [<https://doi.org/10.1186/s12864-024-10500-1>].
- Gould, A.A. 1841. *Report on the Invertebrata of Massachusetts, Comprising the Mollusca, Crustacea, Annelida, and Radiata*. Folsom, Wells, and Thurston, Cambridge, MA, USA.
- Gries, L., Paule, J., Sonnewald, M. & Nilsson, M.A. 2024. Eocene origin of anemone-carrying behaviour in polydectine crabs (Brachyura: Xanthidae). *Zoological Journal of the Linnean Society*, **200**: 352–359.
- Herbst, J.F.W. 1782–1804. *Versuch einer Naturgeschichte der Krabben und Krebse nebst einer systematischen Beschreibung ihrer verschiedenen Arten*. Gottlieb, Auguts and Lange, Berlin & Stralsund.
- Jennings, L.A., Blakeslee, A.M.H., McCoy, K.A., Behringer, D.C. & Bojko, J. 2021. Systematic assessment of the Panopeidae and broader Eubrachyura (Decapoda: Brachyura) using mitochondrial genomics. *Arthropod Systematics & Phylogeny*, **79**: 569–585.
- Karagozlu, M.Z., Barbon, M.M., Dinh, T.D., Demayo, C.G. & Kim, C.-B. 2018a. Complete mitochondrial genome of xanthid crab *Atergatis floridus* (Linnaeus, 1767). *Mitochondrial DNA Part B*, **3**: 202–204.
- Karagozlu, M.Z., Barbon, M.M., Dinh, T.D., Demayo, C.G. & Kim, C.-B. 2018b. Complete mitochondrial genome of *Atergatis integerrimus* (Decapoda, Xanthidae) from the Philippines. *Mitochondrial DNA Part B*, **3**: 205–206.
- Karagozlu, M.Z., Dinh, T.D., Nguyen, V.Q. & Kim, C.-B. 2018c. Analysis of complete mitochondrial genome of *Etisus anaglyptus* (Arthropoda, Decapoda, Xanthidae) with phylogenetic consideration. *Mitochondrial DNA Part B*, **3**: 278–279.
- Katoh, K. & Standley, D.M. 2013. MAFFT multiple sequence alignment software version 7: improvements in performance and usability. *Molecular Biology and Evolution*, **30**: 772–780.
- Ki, J.S., Dahms, H.U., Hwang, J.S. & Lee, J.S. 2009. The complete mitogenome of the hydrothermal vent crab *Xenograpsus testudinatus* (Decapoda, Brachyura) and comparison with brachyuran crabs. *Comparative Biochemistry and Physiology Part D: Genomics and Proteomics*, **4**: 290–299.
- Lamarck, J.B.P.A. de, 1818. *Histoire Naturelle des Animaux sans Vertèbres, présentant les caractères généraux et particuliers de ces animaux ...*, **Vol. 5**. Déterville, Paris.
- Lasley, R.M. Jr, Lai, J.C.Y. & Thoma, B.P., 2013. A new genus for *Chlorodiella longimana* (H. Milne Edwards) supported by morphology and molecular data, with a preliminary phylogeny of the Chlorodiellinae (Crustacea: Decapoda: Xanthidae). *Invertebrate Systematics*, **27**: 379–390.
- Lasley, R.M. Jr., Klaus, S. & Ng, P.K.L. 2015. Phylogenetic relationships of the ubiquitous coral reef crab subfamily Chlorodiellinae (Decapoda, Brachyura, Xanthidae). *Zoologica Scripta*, **44**: 165–178.
- Latreille, P.A. 1812. *Crustacés et insectes*, pp. 270–280. In: Milbert, J. *Voyage pittoresque à l'Île-de-France, au cap de Bonne-Espérance et à l'Île de Ténériffe*, Vol. 2. Nepveu, Paris.
- Linnaeus, C. 1758. *Systema Naturae per Regna Tria Naturae, Secundum Classes, Ordines, Genera, Species, cum Characteribus, Differentiis, Synonymis, Locis*, **Vol. 1**, Edn. 10. Reformata. Laurentii Salvii, Holmiae [= Stockholm].
- Linnaeus, C. 1767. *Systema Naturae per Regna tria Naturae, secundum Classes, ordines, Genera, Species, cum Characteribus, Differentiis, Synonymis, Locis*, **Vol. 1**, Edn. 13. Vindobona [=Vienna].
- Liu, H. & Shen, M. 2021. The complete mitochondrial genome of spiny spooner *Etisus dentatus* (Herbst, 1785) using high-throughput sequencing. *Mitochondrial DNA Part B*, **6**: 985–987.
- Lü, Z., Liu, Y., Zhao, S., Fang, J., Zhu, K., Liu, J., Gong, L., Liu, L. & Liu, B. 2023. Amblyopinae mitogenomes provide novel insights into the paraphyletic origin of their adaptation to mudflat habitats. *International Journal of Molecular Sciences*, **24**: 4362 [<https://doi.org/10.3390/ijms24054362>].
- Mendoza, J.C.E., Chan, K.O., Lai, J.C.Y., Thoma, B.P., Clark, P.F., Guinot, D., Felder, D.L. & Ng, P.K.L. 2022. A comprehensive molecular phylogeny of the brachyuran crab superfamily Xanthoidea provides novel insights into its systematics and evolutionary history. *Molecular Phylogenetics and Evolution*, **177**: 107627 [<https://doi.org/10.1016/j.ympev.2022.107627>].
- Miers, E.J. 1884. Collections from the western Indian Ocean. Crustacea, Part II. *Report on the Zoological Collections made in the Indo-Pacific Ocean during the Voyage of H.M.S. 'Alert' 1881–2*. British Museum (Natural History), London.
- Milne Edwards, H. 1834. *Histoire naturelle des Crustacés, comprenant l'anatomie, la physiologie et la classification de ces animaux*, **Vol. 1**. Librairie Encyclopédique de Roret, Paris.
- Ng, P.K.L., Guinot, D. & Davie, P.J.F. 2008. Systema Brachyurorum: Part I. An annotated checklist of extant brachyuran crabs of the world. *Raffles Bulletin of Zoology*, **31**: 1–286.
- Nguyen, L.T., Schmidt, H.A., Von Haeseler, A. & Minh, B.Q. 2015. IQ-TREE: a fast and effective stochastic algorithm for estimating maximum-likelihood phylogenies. *Molecular Biology and Evolution*, **32**: 268–274.
- Poore, G.C.B. & Ahlyong, S.T. 2023. *Marine decapod Crustacea: a guide to the families and genera of the world*. CSIRO Publishing, Collingwood, Australia.
- Poupin, J. 1918. *Les Crustacés décapodes des Petites Antilles, avec de nouvelles observations pour Saint Martin, la Guadeloupe et la Martinique*. Muséum national d'Histoire naturelle, Paris.
- Ramos, N.I., DeLeo, D.M., Horowitz, J., McFadden, C.S. & Quattrini, A.M. 2023. Selection in coral mitogenomes, with insights into adaptations in the deep sea. *Scientific Reports*, **13**: 6016 [<https://doi.org/10.1038/s41598-023-31243-1>].
- Randall, J.W. 1840. Catalogue of the Crustacea brought by Thomas Nuttall and J.K. Townsend, from the West Coast of North America and the Sandwich Islands ... *Journal of the Academy of Natural Sciences at Philadelphia*, **8**: 106–147, pls. 3–7.
- Ronquist, F., Teslenko, M., Van Der Mark, P., Ayres, D.L., Darling, A., Höhna, S., Larget, B., Liu, L., Suchard, M.A. & Huelsenbeck, J.P. 2012. MrBayes 3.2: efficient Bayesian phylogenetic inference and model choice across a large model space. *Systematic Biology*, **61**: 539–542.
- Rüppell, E. 1830. *Beschreibung und Abbildung von 24 Arten Kurzschwänzigen Krabben, als Beitrag zur Naturgeschichte des rothen Meeres*. H. L. Brönnner, Frankfurt am Main, Germany.
- Serène, R. 1984. Crustacés Décapodes Brachyours de l'Océan Indien Occidental et de la Mer Rouge, Xanthoidea: Xanthidae et Trapeziidae. Avec un addendum par Crosnier, A.: Carpiliidae et Menippidae. *Faune Tropicale*, **24**: 1–349.
- Smith, S.I. 1869. Notes on new or little known species of American cancrinid Crustacea. *Proceedings of the Boston Society of Natural History*, **12**: 274–289

- Sung, J.-M., Lee, J., Kim, S.-G., Karagozlu, M.Z. & Kim, C.-B. 2016. Complete mitochondrial genome of *Leptodius sanguineus* (Decapoda, Xanthidae). *Mitochondrial DNA Part B*, **1**: 500–501.
- Tan, M.H., Gan, H.M., Lee, Y.P., Bracken-Grissom, H., Chan, T.Y., Miller, A.D. & Austin, C.M. 2019. Comparative mitogenomics of the Decapoda reveals evolutionary heterogeneity in architecture and composition. *Scientific Reports*, **9**: 10756 [<https://doi.org/10.1038/s41598-019-47145-0>].
- Thoma, B.P., Guinot, D & Felder, D.L. 2014. Evolutionary relationships among American mud crabs (Crustacea: Decapoda: Brachyura: Xanthoidea) inferred from nuclear and mitochondrial markers, with comments on adult morphology, *Zoological Journal of the Linnean Society*, **170**: 86–109.
- Wang, Q., Wang, J., Wu, Q., Xu, X., Wang, P. & Wang, Z. 2021. Insights into the evolution of Brachyura (Crustacea: Decapoda) from mitochondrial sequences and gene order rearrangements. *International Journal of Biological Macromolecules*, **170**: 717–727.
- Wang, Z., Wang, Z., Shi, X., Wu, Q., Tao, Y., Guo, H., Ji, C. & Bai, Y. 2018. Complete mitochondrial genome of *Parasesarma affine* (Brachyura: Sesarmidae): Gene rearrangements in Sesarmidae and phylogenetic analysis of the Brachyura. *International journal of biological macromolecules*, **118**: 31–40.
- Xu, T., Bravo, H. & van der Meij, S.E.T. 2023. Phylomitogenomics elucidates the evolution of symbiosis in Thoracotremata (Decapoda: Cryptochiridae, Pinnotheridae, Varunidae). *PeerJ*, **11**: e16217 [<https://doi.org/10.7717/peerj.16217>].