

University of Groningen

Catch-and-Release Probes Applied to Semi-Intact Cells Reveal Ubiquitin-Specific Protease Expression in Chlamydia trachomatis Infection

Claessen, Jasper H.L.; Witte, Martin; Yoder, Nicholas C.; Zhu, Angela Y.; Spooner, Eric; Ploegh, Hidde L.

Published in:
 ChemBioChem

DOI:
[10.1002/cbic.201200701](https://doi.org/10.1002/cbic.201200701)

IMPORTANT NOTE: You are advised to consult the publisher's version (publisher's PDF) if you wish to cite from it. Please check the document version below.

Document Version
 Publisher's PDF, also known as Version of record

Publication date:
 2013

[Link to publication in University of Groningen/UMCG research database](#)

Citation for published version (APA):

Claessen, J. H. L., Witte, M. D., Yoder, N. C., Zhu, A. Y., Spooner, E., & Ploegh, H. L. (2013). Catch-and-Release Probes Applied to Semi-Intact Cells Reveal Ubiquitin-Specific Protease Expression in Chlamydia trachomatis Infection. *ChemBioChem*, 14(3), 343-352. DOI: 10.1002/cbic.201200701

Copyright

Other than for strictly personal use, it is not permitted to download or to forward/distribute the text or part of it without the consent of the author(s) and/or copyright holder(s), unless the work is under an open content license (like Creative Commons).

Take-down policy

If you believe that this document breaches copyright please contact us providing details, and we will remove access to the work immediately and investigate your claim.

Downloaded from the University of Groningen/UMCG research database (Pure): <http://www.rug.nl/research/portal>. For technical reasons the number of authors shown on this cover page is limited to 10 maximum.

Catch-and-Release Probes Applied to Semi-Intact Cells Reveal Ubiquitin-Specific Protease Expression in *Chlamydia trachomatis* Infection

Jasper H. L. Claessen, Martin D. Witte, Nicholas C. Yoder, Angela Y. Zhu, Eric Spooner, and Hidde L. Ploegh^{*,[a]}

Protein ubiquitylation controls many cellular pathways, and timely removal of ubiquitin by deubiquitylating enzymes (DUBs) is essential to govern these different functions. To map endogenous expression of individual DUBs as well as that of any interacting proteins, we developed a catch-and-release ubiquitin probe. Ubiquitin was equipped with an activity-based warhead and a cleavable linker attached to a biotin affinity-handle through tandem site-specific modification, in which we combined intein chemistry with sortase-mediated ligation. The resulting probe is cell-impermeable and was there-

fore delivered to the cytosol of perfringolysin O (PFO)-permeabilized cells. This allowed us to retrieve and identify 34 DUBs and their interacting partners. We also noted the expression, in host cells infected with *Chlamydia trachomatis*, of two additional DUBs. Furthermore, we retrieved and identified chlamydial DUB1 (ChlaDUB1) and DUB2 (ChlaDUB2), demonstrating by experiment that ChlaDUB2, the presence and activity of which had not been detected in infected cells, is in fact expressed during the course of infection.

Introduction

Protein ubiquitylation is a versatile post-translational modification that regulates a wide array of biological processes, ranging from trafficking of proteins and signaling cascades, to protein stability. Conjugation of ubiquitin (Ub) is achieved through a cascade of enzymes. The C-terminal carboxylic acid of ubiquitin is activated by an E1 ubiquitin-activating enzyme that uses ATP to yield a ubiquitin-enzyme thioester. Transthioesterification to an E2 ubiquitin-conjugating enzyme is followed by transfer of ubiquitin to protein substrates through an E3 ligase. The vast number of predicted E3 ligases (> 600) allows for great specificity. Multiple ubiquitylation reactions can occur on the same protein, either as mono- or polyubiquitin modifications, the latter using structurally different linkages, to produce a highly versatile protein modification system (reviewed in ref. [1]).


Ubiquitylation is reversible. Protein trafficking, where dependent on ubiquitylation, would require removal of ubiquitin once the protein has reached its destination. Similarly, a ubiquitin tag can mark proteins for proteasomal destruction, but ubiquitin itself can be removed to recycle it. Deubiquitylating enzymes (DUBs), also known as ubiquitin-specific proteases (USPs), cleave ubiquitin from substrate proteins. The human genome encodes ~80 (putative) DUBs, the majority of which

have a papain-like active site.^[2] DUB activity is tightly regulated by post-translational modifications, protein–protein interactions, and subcellular localization, both to increase specificity and for temporal control of ubiquitin removal.^[3] Large-scale efforts have allowed the construction of interaction maps of the individual DUBs to gain insight in their physiological role and regulation.^[4] These efforts have thus far relied mostly on overexpression of individual DUBs modified with affinity handles, and subsequent retrieval of that particular DUB and its interactors. However, this approach has been limited to a small number of tissue culture cell lines and may suffer from artifacts due to overexpression of a DUB or its catalytic domain. Elevated DUB levels can result in strong phenotypes, such as a complete block in proteasomal degradation.^[5]

Our laboratory has prepared activity-based probes (ABPs) for the (de)ubiquitylation pathway to study in an unbiased manner the enzymes involved in these reactions. This approach samples DUBs at their endogenous expression level, and in their full-length active state. We equipped the C terminus of influenza hemagglutinin (HA) tag containing ubiquitin with a variety of electrophiles by aminolysis of protein thioesters, prepared by the intein fusion method.^[6,7] Recently, other labs replaced the HA tag by fluorophores to create fluorescent analogues of these probes.^[8,9] These ubiquitin derivatives act as covalent, cysteine-directed inhibitors of ubiquitin and ubiquitin-like deconjugating enzymes, as well as of a subset of ubiquitin ligases. The labeled enzymes can be visualized either by immunoblotting or are identified by mass spectrometry after affinity purification in the case of HA-tagged proteins^[10] and by in-gel fluorescence scanning in the case of fluorescent probes.^[8,9] Of the electrophiles tested, the vinyl methyl ester

[a] Dr. J. H. L. Claessen,⁺ Dr. M. D. Witte,⁺ Dr. N. C. Yoder, A. Y. Zhu, E. Spooner, Prof. Dr. H. L. Ploegh
Whitehead Institute for Biomedical Research
9 Cambridge Center, Cambridge, MA 02142 (USA)
E-mail: ploegh@wi.mit.edu

[⁺] These authors contributed equally to this work.

 Supporting information for this article is available on the WWW under <http://dx.doi.org/10.1002/cbic.201200701>.

(VME) derivative is probably the most broadly reactive warhead with ubiquitin deconjugating^[6] and conjugating^[10] enzymes, irrespective of enzyme family or organism of origin.

Using these ABPs, we identified DUBs in mammalian cells and those encoded by pathogens such as the Herpes viruses, parasites including *Plasmodium falciparum* and *Toxoplasma gondii*, and bacteria such as *Chlamydia trachomatis*.^[11–13] Although viral and bacterial pathogens do not possess an intact ubiquitin pathway, they presumably express DUBs to evade detection by the immune system or to otherwise enhance virulence^[14] especially for those pathogens with an intracellular lifestyle. Detection of DUBs in the context of host infection can be challenging, as expression levels can vary between infectious agents and with the time of infection. Detection is therefore highly dependent on the sensitivity of the approach used. An example is the bacterium *C. trachomatis*, for which no means of genetic manipulation has been established to date. We identified a single Chlamydial DUB (ChlaDUB1) using UbVME probes,^[11] but the *Chlamydia* genome also encodes a second putative DUB, termed ChlaDUB2. Even though recombinantly expressed ChlaDUB2 encodes a UbVME-reactive protein, the actual product has escaped detection in the course of a chlamydial infection.

We attribute this inability to a lack of sensitivity of the activity-based probes available at the time, and to the manner of their application. Furthermore, in the course of affinity-based purification, abundant, poorly soluble, or otherwise nonspecifically interacting proteins invariably accumulate on the affinity matrix. Recovery of samples from the matrix under denaturing conditions will then elute these contaminants together with the specific interactors, resulting in false-positive hits during mass spectrometric identification. Moreover, the presence of background peptides adversely affects the bandwidth available

to detect true protein targets, in turn decreasing the limit of detection of true positive hits.^[15]

A second and more specific drawback of many such ABPs is that they are cell-impermeable and therefore can be used only in cell lysates. Lysis of cells usually entails massive dilution of the cytosol, which in turn may lead to dissociation of protein complexes with concomitant loss of activity, and reduced or no binding of the ABP when the affinity of the target for the ABP is low.

To mitigate the first issue, we equipped UbVME derivatives with recently described chemically cleavable linkers.^[16–18] These linkers allow cleavage under mild conditions and enable specific retrieval of the tagged proteins while minimizing release of nonspecific binders (Figure 1A). The second issue was addressed by developing a method that allows the delivery of the probe to the cytoplasm of permeabilized cells (Figure 1B) with minimal dilution of the target cytosol. The combined methods allowed us to retrieve 34 DUBs—one of which had not been previously identified by ABP. Two additional host DUBs were detected in HeLa cells infected with *C. trachomatis*. Furthermore, the covalent modification of DUBs with ABPs in a less dilute cytosol and thus presumably a more physiological setting resulted in retrieval of a large number of interacting proteins, as identified using mass spectrometry. Finally, we were able to detect ChlaDUB2, 24 h after infection of HeLa cells with *C. trachomatis*, showing that this enzyme, the presence of which was previously inferred but never demonstrated in *Chlamydia*-infected cells, is expressed.

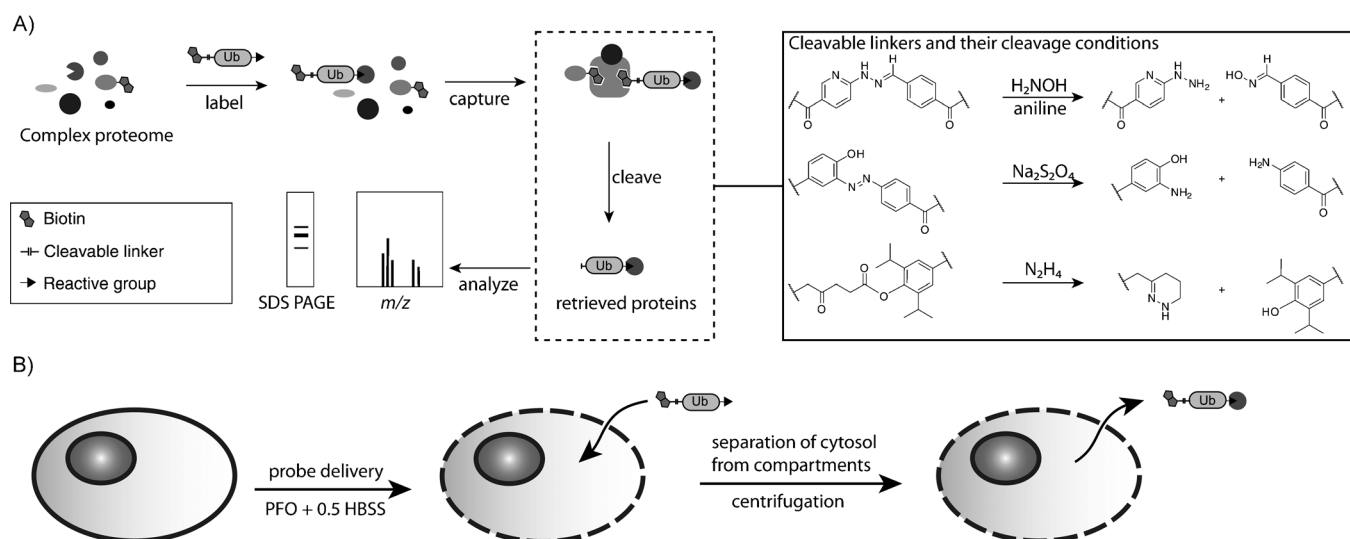


Figure 1. An overview of the cleavable linker approach. A) DUBs are labeled with an ABP containing the cleavable linker. The labeled proteins are retrieved on a streptavidin matrix which is then washed before release by selective cleavage of the linker. B) An overview of probe delivery approach. Cells are incubated on ice with perfringolysin O (PFO) in the presence of the probe. The cells are incubated at 37 °C for 30 min to allow pore formation and labeling to occur. The cytosol is then separated from the cellular compartments by centrifugation.

Results

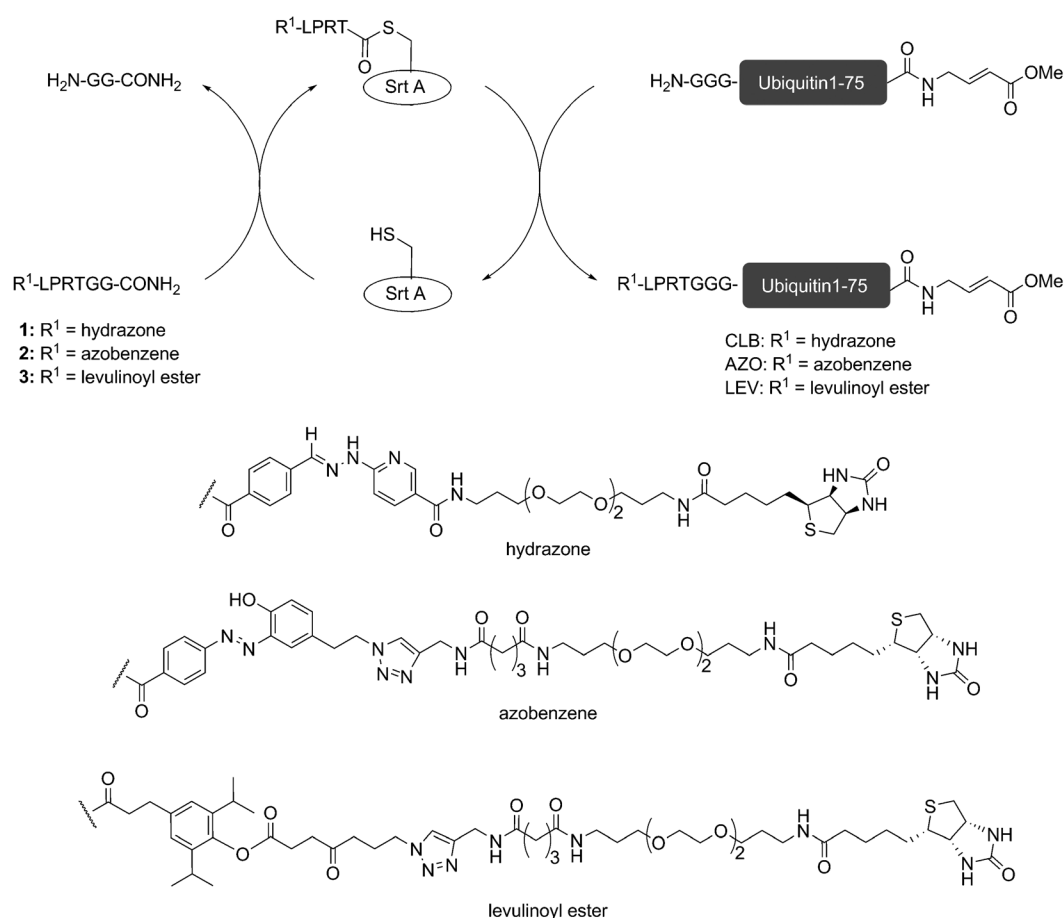
Preparation and validation of catch-and-release ubiquitin electrophiles

A ubiquitin moiety that carries diverse modifications at the N terminus such as epitope tags, fluorophores, and biotin can still be recognized by the ubiquitin conjugation and deconjugation machinery,^[6,9] whereas modification of the ϵ -amino group of its lysine residues might interfere with activity through elimination of possible conjugation sites. Modifications at the C terminus might result in altered specificity.^[19] We therefore selectively introduced a cleavable linker at the N terminus of UbVME using the sortase-based transpeptidation reaction. This is a versatile and easily implemented site-specific protein ligation strategy (Scheme 1). Proteins bearing 1–5 glycine residues at the N terminus can be labeled using appropriately functionalized LPXTG peptides.^[20,21] We therefore synthesized peptides 1–3 (Scheme 1), which combine previously reported catch-and-release moieties^[16–18] with the above peptide sequence (for synthesis, see Schemes S1 and S2 in the Supporting Information). Preliminary experiments showed that protein recovery from the streptavidin resin was significantly improved by extending the biotin handle using a polyethylene

glycol (PEG)-type spacer (Figure S1 A). This scheme is generalizable, in that it can be applied to any protein with a suitably exposed run of Gly residues.

We prepared a derivative of ubiquitin vinyl methyl ester (UbVME) as a nucleophile with three glycine residues appended at the N terminus (G₃UbVME).^[22] N-terminal sortagging of G₃UbVME with catch-and-release probes 1–3 proceeded in 50–70% yield. Purification by RP-HPLC gave highly pure and labeled UbVME (Figure S1 B and C). HPLC purification also allowed for recovery from the reaction mixtures of unreacted G₃UbVME that could then be used in subsequent reactions, thus minimizing losses of valuable input materials. This synthetic strategy enables the production of a protein reagent bearing two site-specific bioorthogonal chemical modifications. Examples of this in the literature are scarce.^[20,23,24]

The activity of the different catch-and-release UbVME probes was evaluated by reacting them with purified recombinant ubiquitin carboxy-terminal hydrolase isozyme L3 (UCH-L3), a well-characterized DUB.^[25] Analysis of the reaction products by anti-ubiquitin immunoblot revealed a ubiquitin-bearing product at ~37 kDa, corresponding to the covalent adduct of UCH-L3 (26 kDa) with biotin-labeled ubiquitin (~10 kDa). Binding of the reaction products on streptavidin, followed by exposure of the streptavidin resin to the optimized cleavage condi-



Scheme 1. Preparation of cleavable linker-containing UbVME probes. G₃UbVME was equipped with peptides 1–3 using a transacylation reaction catalyzed by the bacterial enzyme sortase A (Srt A).

tions for each cleavable linker, yielded the UCH-L3-UbVME adduct in >50% recovered yield for all three derivatives (Figure 2, left and middle lanes). Boiling of the streptavidin resin in Laemmli sample buffer after chemical cleavage released only a minimal amount of residual protein (right lanes), demonstrating the efficiency of cleavage.

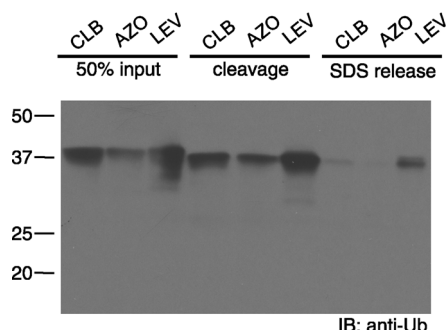


Figure 2. Evaluation of the novel probes using UCH-L3. UCH-L3 was incubated with the different probes (10 μ M) for 2 h at 37 °C (left lanes). Biotinylated proteins were retrieved on streptavidin agarose and released by chemical cleavage (middle lanes). After cleavage of the linker, beads were boiled to release remaining biotinylated proteins (right lanes).

Probe efficiency in whole cell lysate

The results of the *in vitro* assay using recombinant UCH-L3 prompted us to assess the efficiency of the catch-and-release probes in whole cell lysates. HEK293T cells were cultured overnight in the presence of [35 S]cysteine/methionine to achieve steady-state protein labeling. The labeled cells were lysed in NP40 lysis buffer. The lysate was then precleared with streptavidin agarose to remove any endogenously biotinylated proteins prior to incubation with the probe of choice (1 μ M). Modified proteins were retrieved using streptavidin-agarose and were specifically eluted through cleavage of the chemical linker (see the Experimental Section). Finally, the eluted proteins were separated by SDS-PAGE and visualized using autoradiography (Figure 3A).

First, we retrieved few proteins in the lanes where the probe was omitted from the reaction (lanes 1, 3 and 5). In contrast, addition of the probe and subsequent chemical cleavage of the linker resulted in the specific retrieval of a large number of proteins (lanes 2, 4 and 6), demonstrating the added benefit of

the catch-and-release approach used here. The efficiency of retrieval varied between the three individual probes (Figure 3A), most likely attributable to differences in cleavage efficiencies. Whereas retrieval with the CLB probe proved rather poor, a large number of specific proteins was retrieved with either the LEV, or AZO probe, the latter slightly outperforming the former.

The complex mixture of labeled DUBs and the interacting partners that are recovered in this approach can complicate data analysis. The mild chemical cleavage conditions are expected to yield, upon cleavage, native protein complexes with the possibility of performing an immunoprecipitation (IP) for a particular DUB of choice (and its interactors). To demonstrate the feasibility of this approach, 293T cells were transiently transfected with YOD1—a DUB involved in glycoprotein dislocation from the endoplasmic reticulum (ER)—and treated as described above.^[26] After chemical cleavage, the eluted proteins were diluted in NP40 buffer and subjected to IP with an antibody against YOD1. When we analyzed the chemical eluate by SDS-PAGE, we observed a complex banding pattern with a prominent polypeptide at a molecular weight corresponding to YOD1 modified with the ubiquitin probe (Figure 3B). The same polypeptide was observed also after a second IP for YOD1, confirming its identity. We found that the LEV probe, although slightly less efficient in the first set of experiments (Figure 3A), performed better in this setting. Far less protein was retrieved in a consecutive IP when an eluate from an AZO-UbVME-labeled cell lysate was used. Dithionite concentrations of >10 mM can denature proteins.^[27] The reducing conditions used to cleave the azobenzene linker may

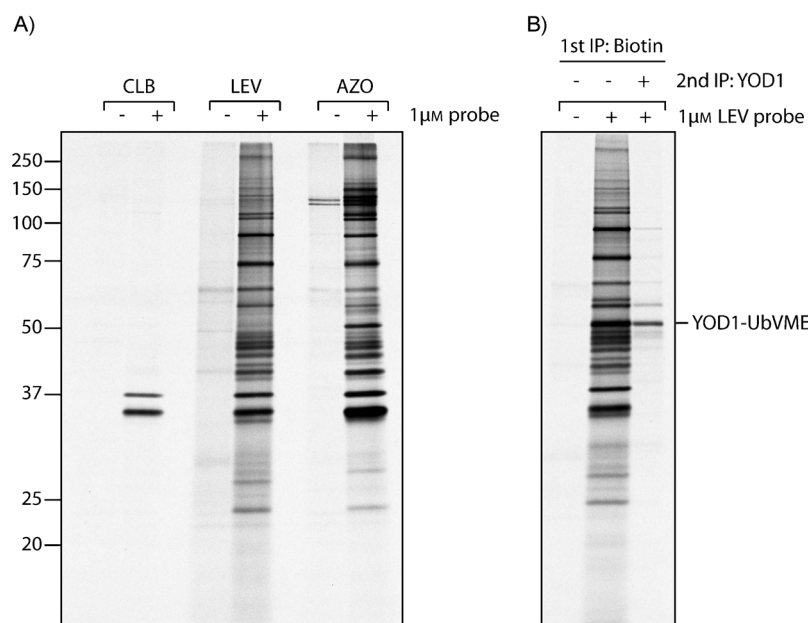


Figure 3. Retrieval of DUBs from whole cell lysate using the catch-and-release probe. A) 293T cells were grown overnight in the presence of [35 S]cysteine/methionine. Cells were lysed in NP40 lysis buffer, precleared with streptavidin beads, followed by incubation with the indicated probe (1 μ M) at 4 °C. Labeled product was retrieved with streptavidin agarose, eluted with the relevant elution buffer, and analyzed by SDS-PAGE. B) 293T cells were transiently transfected with YOD1 and treated as in A), though exclusively with the LEV probe. Where indicated, the eluate was redissolved in NP40 buffer, followed by immuno-retrieval of YOD1.

thus have reduced protein complexes and/or denatured the antibody in the course of the second IP. Addition of oxidized glutathione to quench the excess of sodium dithionite did not alter the outcome of the experiment (data not shown), and this issue was not explored further.

Probe delivery in semi-intact cells

In order to efficiently retrieve the protein complexes in which individual DUBs participate, we devised a strategy that allows labeling of DUBs in a more physiological setting. To this end, we chose to deliver the probe in a permeabilized cell system, instead of incubating a whole cell lysate with an ABP. Cells were permeabilized through incubation with perfringolysin O (PFO), a pore-forming toxin that binds cholesterol in the plasma membrane. We previously documented that after pore formation, purified compounds can be delivered to the cytosol by exposure to mild hypotonic conditions, equivalent to $0.5 \times$ Hank's balanced salt solution (HBSS; Figure 1B).^[28] 293T cells (5×10^6) were labeled overnight with [35 S]cysteine/methionine, pelleted, transferred on ice, and resuspended in $0.5 \times$ HBSS ($100 \mu\text{L}$), PFO ($0.1 \mu\text{M}$), in the presence or absence of AZO probe ($10 \mu\text{M}$, the probe is diluted $\sim 2 \times$ upon addition to the cells). The cells were then incubated at 37°C , which allows pore formation to occur, concomitant with an influx of buffer and delivery of the probe to the intracellular milieu. After 30 min, cells were again cooled to 4°C , and the cytosol was separated from the membrane fraction by mild centrifugation (5 min at $1150g$).

This approach offers three major advantages. First, it allows labeling of DUBs under more physiological conditions, that is, with minimal dilution of cytosol and—excepting the plasma membrane—with retention of organellar integrity, thus increasing the probability of retrieving meaningful interaction partners. Second, as the reaction is performed in a small volume, it also allows for higher concentrations of probe to be used. Finally, separation of the soluble fractions from the membrane fractions provides useful information on the localization of any retrieved DUBs and their associated proteins.

The experiment was performed as described above, and the recovered fractions were subjected to denaturation in 1% SDS, followed by retrieval with

streptavidin agarose (Figure 4A). Denaturation results in release from the recovered DUBs of any interacting proteins, thus visualizing only labeled DUBs. We retrieved a large number of specific proteins—with minimal background—that distribute over the membrane and soluble fractions. To assess the integrity of intracellular compartments such as the ER, the ER luminal protein disulfide isomerase (PDI) was retrieved with minimal spill-over into the soluble fraction (Figure 4C). To test whether we could recover DUB complexes in this fashion, the experiment was repeated, except that the fractions were not exposed to an SDS-containing buffer (Figure 4B). To minimize labeling of DUBs post-lysis, a protease inhibitor cocktail (Roche complete, EDTA free) was added to the NP40 lysis buffer. Using these conditions, we indeed retrieved a larger number of proteins, but at the expense of increased background.

Detection of chlamydial DUBs in infected cells

Having established proof-of-principle, we focused our attention on labeling of DUBs in cells infected by *C. trachomatis*. HeLa cells were infected with *Chlamydia* 24 h prior to incubation with the AZO-UbVME probe. In order to exclusively visualize the chlamydial proteins, the cells were cultured in the presence of [35 S]cysteine/methionine, as well as cycloheximide, to inhibit host protein synthesis while leaving bacterial protein

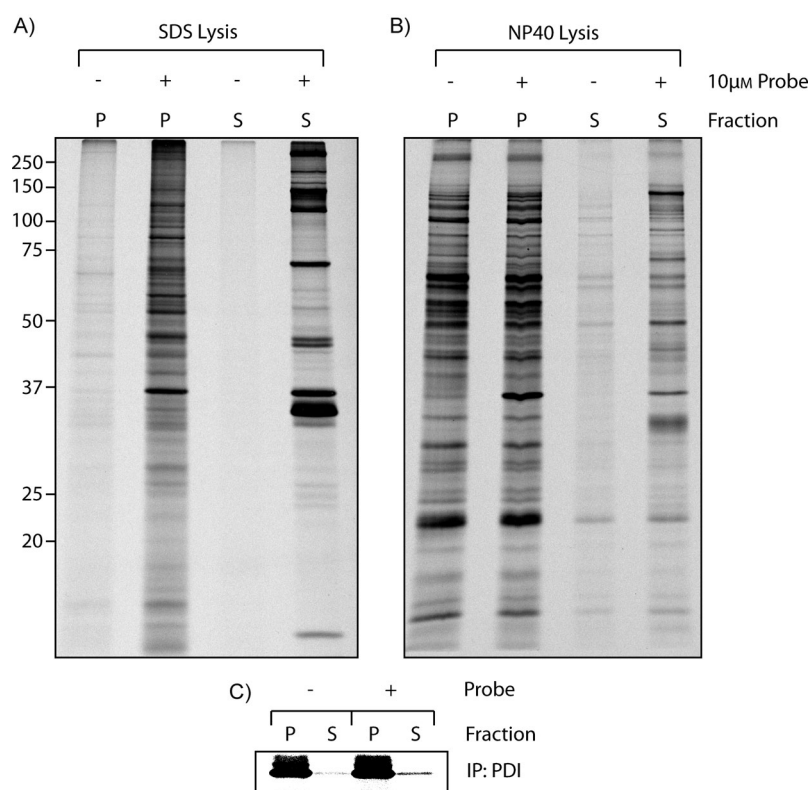


Figure 4. Retrieving DUBs from semi-intact cells. A) 293T cells were grown overnight in the presence of [35 S]methionine/cysteine. The cells were collected and resuspended in $0.5 \times$ HBSS ($100 \mu\text{L}$) containing PFO ($0.1 \mu\text{M}$), in the presence or absence of AZO probe ($10 \mu\text{M}$). After 30 min at 37°C , the fractions (P: pellet, S: supernatant) were separated by mild centrifugation and dissolved in 1% SDS. Labeled protein was retrieved with streptavidin agarose and separated using SDS-PAGE. B) Experiment as in A), but here the fractions were dissolved in NP40 lysis buffer. C) PDI was retrieved through IP from the lysates produced in A) to serve as a control for separation.

synthesis intact.^[29] The cells were permeabilized using PFO and incubated with the AZO probe, after which the supernatant was separated from the pellet fraction by centrifugation. After analysis by SDS-PAGE, we observed one specific UbVME-reactive protein in the pellet fraction, and three proteins in the supernatant fraction (arrowheads, Figure 5A), one of which has a molecular weight that corresponds to ChlaDUB2 modified with UbVME. None of these proteins were detected after inclusion of chloramphenicol, a potent inhibitor of bacterial (but not host) protein synthesis, further validating them as chlamydial proteins. The chlamydial inclusion remains intact during this procedure, as the outer membrane protein OMP1 is found exclusively in the pellet fraction (Figure 5B).

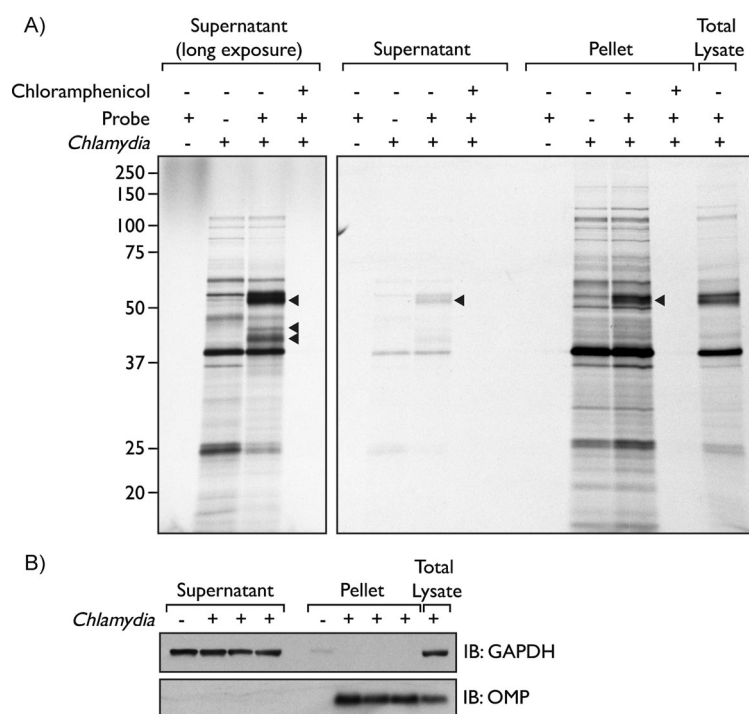


Figure 5. The labeling of chlamydial deubiquitylating enzymes. A) HeLa cells infected with *C. trachomatis* were labeled with [³⁵S]cysteine/methionine. Host protein synthesis was inhibited by the addition of cycloheximide. Cells were permeabilized using PFO and DUBs were labeled with AZO probe (10 μ M) and subsequently treated as described above for uninfected cells. B) The supernatant and pellet fraction of the *Chlamydia*-infected cells were immunoblotted (IB) for GAPDH and the chlamydial outer membrane protein 1 (OMP1).

DUB-centered proteomics in semi-intact cells

To establish the identity of the UbVME-reactive proteins in the *Chlamydia*-infected semi-intact cells, we subjected the DUBs and their interacting proteins to LC-MS/MS. We treated uninfected HeLa cells as in Figure 4B, separated the chemical eluate by SDS-PAGE and excised the bands after silver staining for analysis by LC-MS/MS. In total, 34 DUBs were identified, of which USP36 had not earlier been found in studies using ubiquitin activity-based probes (Table 1).

Where most DUBs retrieved belong to the USP class of ubiquitin hydrolases, we also observe eight DUBs from the otubain family, two from the Josephin family, and three from the family of ubiquitin C-terminal hydrolases. These results once again confirm the remarkable complexity of DUBs expressed by the typical mammalian cell, underscoring the need to carefully regulate both ubiquitylation and deubiquitylation reactions.

As our method was devised to allow identification of proteins with which DUBs engage in complex formation, we were encouraged by the presence of a number of well-studied DUB–protein complexes. An example is the recovery of most of the regulatory cap proteins of the 26S proteasome (Table 2). Other examples of protein complexes retrieved include host cell factor-1, galectin 7, p97, ras GTPase-binding proteins 1 and 2, WD-repeat containing protein 48 and WD-repeat containing protein 20, and thioredoxin like protein, which interact with BAP, USP1, ataxin-3, USP10, USP12, and USP14 or UCH-L5,^[4,30] respectively.

In parallel we performed this type of experiment using *Chlamydia*-infected cells. As a benchmark, ChlaDUB1 was identified with 59% and 46% sequence coverage in the supernatant and pellet fraction, respectively (24 unique peptides in the pellet fraction and 19 unique peptides in the supernatant fraction, see Table 1). In addition to ChlaDUB1, we were able to identify two additional host DUBs previously not labeled with UbVME: USP33 and TRABID in the *Chlamydia*-infected cells. More importantly, we also identified ChlaDUB2. This is the first time ChlaDUB2 has been identified in the course of infection. ChlaDUB2 was identified by mass spectrometry with 14% sequence coverage (four unique peptides).

Discussion

Here we describe the development and application of a catch-and-release strategy to identify DUB–protein complexes at endogenous levels of expression. The catch-and-release probes were crafted through tandem site-specific modification of ubiquitin, which combined intein chemistry with sortase-mediated transacylation. This strategy allows for rapid synthesis of the activity-based probe (UbVME), which is then modified with a handle of choice at the N terminus, as illustrated by the production of three different catch-and-release probes. Neither of these strategies is limited to modification of ubiquitin, and we could easily envision the generation of other proteins, similarly modified with two bioorthogonal substituents.

Protein modification with ubiquitin is a complex reaction, which relies not only on the necessary levels of substrate specificity (targets are not modified randomly), but also on the imposition of linkage types that produce ubiquitin chains of unique topology. While the number of possible substrates and the types of ubiquitin modifications they carry are endless, the number of available DUBs that can reverse ubiquitylation and recycle ubiquitin is not. Approximately 80 DUBs are encoded

Table 1. Deubiquitinating enzymes retrieved with biotin-AZO-UbVME and identified by MS.

Protein	Accession number (NCBI)	M_w [kDa]	Unique peptides/sequence coverage [%]			
			Uninfected HeLa cells		<i>Chlamydia</i> -infected cells	
			Pellet	Supernatant	Pellet	Supernatant
USPs						
USP1 (UBP)	31543910	88	16/23	12/14	1/1.3	14/19
USP3 (SIH003, UBP)	55770886	59	15/32	3/6.5	12/26	4/11
USP4 (UNP, Unph)	40795665	109		8/13	1/1	15/18
USP5 (ISOT1)	148727247	93		40/54		41/47
USP7 (HAUSP, TEF1)	150378533	128	47/37	55/41	23/20	63/52
USP8 (HumORF8; UBPY)	190684690	128	26/19	24/21	9/11	11/13
USP10 (UBPO)	119220605	87	18/32	28/38	10/15	22/29
USP11 (UHX1)	24234683	110		15/19		4/7.4
USP12 (UBH1, USP12L1)	301500675	43	4/13	7/13	4/13	5/16
USP13 (IsoT-3, ISOT3)	215598688	97		5/6.8		
USP14 (TGT)	4827050	56	29/56	33/67	22/44	25/45
USP15 (UNPH4, UNPH-2)	355330276	112	16/17	57/57	1/0.92	34/39
USP16 (UBP-M)	5454156	94	9/9.7	23/33	14/8.6	14/10
USP19 (ZMYND9)	312596875	151	5/4.3	25/20	8/5.2	14/9.9
USP24	260064009	294		7/3.4		1/0.46
USP25 (USP21)	50312666	122		4/4.5		4/2.7
USP28	16507200	122	2/2.2	2/2.1	4/4.3	15/21
USP33 (VDU1)	42516561	94			4/7.6	
USP36 (DUB1)	122114651	123	1/1.4		9/8.5	7/6.9
USP47 (TRFP)	1774197	147	1/1.8	23/22	1/1.5	17/9.7
USP48 (RAP1GA1, USP31)	52630449	119	3/3.6		7/5.3	
USP9X (DFFRX, FAF, FAM)	145309309	292		30/13		17/6
CYLD1 (BRSS, CDMT, EAC, MFT1, SBS, TEM, USPL2)	109637774	107				4/4.1
UCHs						
BAP1 (HUCEP-13, hucep-6, TPDS, UCHL2)	4757836	80	6/7.5		3/3.6	13/9.7
UCHL3 (UCH-L3)	5174741	26	5/29	19/62	4/24	21/62
UCHL5 (CGI-70, INO80R, UCH37)	7706753	38	18/58	22/72	11/33	23/66
Josephins						
JOS (ATX3, JOS, MJD, MJD1, SCA3)	13518019	41	2/6.4	10/35	1/3.3	9/31
JOS2	19923879	21	1/6.4		2/7.4	
OTU domain						
OTU1 (YOD1, DUBA8, OTUD2, PRO0907)	62751964	38		10/20		4/12
OTUB1 (HSPC263)	109148508	31		3/13		4/14
OTUB2	12962939	27		2/11		
OTUD3 (UBA4)	149192871	45	3/8.5	4/8.8		3/9.5
OTUD5B (DUBA)	209977019	60		5/11		2/3.2
OTUD6B (GI-77, DUBA5)	157364937	37	4/19	14/47	1/4.3	8/23
OTUD7B (CEZANNE, ZA20D1)	118026942	93	2/3.7	19/32		12/9.3
ZRANB1 (TRABID)	110815809	81				2/4.1
VCIP1 (DUBA3, VCIP135)	36029914	134		2/2.3		
Chlamydial DUBs						
ChlaDUB1	166154214	45			24/59	19/46
ChlaDUB2	166154213	38				4/14

by the human genome, not all of which need to be expressed simultaneously or in the same cell type. Where analyzed, individual DUBs often harbor specificity for a particular type of ubiquitin chain,^[31] effectively further limiting the number of available DUBs to hydrolyze ubiquitin and complete the modification cycle.

To fully understand how deubiquitylation is regulated, and with it the relevant cell biology, the protein complexes that harbor this DUB activity must be analyzed at their endogenous expression level. To this end, we combined our new probes with a delivery method that enables DUB labeling in the cytosol of PFO-permeabilized cells with minimal dilution of cytosol. A high concentration of probe is delivered through the PFO-induced pores to enable labeling under conditions as close to

physiological as possible. This method allowed us to retrieve 36 individual DUBs expressed in HeLa cells, and retrieve proteins in complex with these DUBs, amongst which, for example, the regulatory cap of the proteasome (see Table 2), confirming earlier observations with a first generation probe.^[6] This value for the number of expressed and active DUBs is probably representative for different mammalian cell types, based on the complexity of banding patterns observed in immunoblots on HA-UbVME-modified cell extracts.

The sensitivity of our method is further illustrated by the detection of ChlaDUB2 in HeLa cells infected with *C. trachomatis*, a DUB whose expression in the course of infection had not been demonstrated experimentally. It is clear that similar experiments can be undertaken for other intracellular pathogens.

Table 2. Interacting proteins retrieved with Biotin-AZO-UbVME and identified using MS.

Protein	Accession number (NCBI)	M_w [kDa]	Unique peptides/sequence coverage [%]			
			Uninfected HeLa cells		<i>Chlamydia</i> -infected cells	
			Pellet	Supernatant	Pellet	Supernatant
Proteasome subunits						
α subunits						
PSMA1	23110935	30	4/15	34/44		38/51
β subunits						
PSMB5	4506201	28	2/8.7	2/7.6		1/3.8
26S ATPase						
PSMC1; p56; S4	24430151	49	13/31	20/45	3/6.1	7/21
PSMC2; MSS1; S7	4506209	49	16/42	25/48	7/12	20/38
PSMC3; TBP1	21361144	49	13/36	28/62	9/21	8/12
PSMC4; MIP224; S6	5729991	47	8/23	22/39	3/6.5	11/19
PSMC5; p45; S8	312596881	45	15/48	27/69	3/6.3	18/43
PSMC6; p42	195539395	46	17/49	18/50	2/4	19/34
26S non-ATPase						
PSMD1; P112; S1	25777600	106	16/23	34/44	19/24	38/51
PSMD2; P97; S2	25777602	100	23/30	28/39	21/28	33/36
PSMD3; P58; S3	25777612	61	15/30	17/31	8/18	13/26
PSMD4; S5A	5292161	41	16/41	15/45	10/34	16/45
PSMD5; S5B	4826952	56	3/7.1	16/38		12/31
PSMD6; S10	7661914	46	9/28	9/26	1/2.3	10/31
PSMD7; P40; S12	25777615	37	12/43	10/40	8/22	12/45
PSMD8; p31; S14	156631005	40	4/14	2/7.1	2/5.4	2/12
PSMD9; p27	18543329	25	5/23	7/34		1/4
PSMD10; p28	4506217	24		6/35		4/23
PSMD11; p44.5; S9	28872725	47	11/28	14/35	4/6.9	9/19
PSMD12; p55	4506221	53	6/12	9/19	2/4.8	4/9.6
PSMD13; p40.5; S11	157502193	43	7/21	5/14	2/4.8	9/28
PSMD14	5031981	35	3/16	5/21	3/6.5	2/9.4
ADRM1; hRpn13	28373192 (+1)	42	12/19	14/25	3/5.4	11/17
Proteasome associated						
PAAF1; PAAF; WDR71	13376751	42	10/28	8/18		5/16
Other interactors						
HCF-C1	98986457	209	15/4.9	1/1.2		
galectin 7	109948279 (+1)	15	5/45			
VCP; p97	6005942	89	31/43	13/22	4/5.3	3/6.0
G3BP-1	38327552 (+1)	52	8/18	10/21		
G3BP-2	19923399 (+1)	54	4/9.8	6/12		
WD repeat-containing protein 48	18874090	76	33/47	26/41	22/31	22/25
WD repeat-containing protein 20 isoform 7	334848139	67	6/13	4/8.5	3/4	2/4.7
thioredoxin-like protein 1	4759274	32	13/55			4/19

Our analysis here is limited to snapshots of DUB activity in a population of cells. The nature of the experimental set-up, which does not rely on genetic expression of the ABP, allows for a more dynamic approach. How does the cellular ubiquitin machinery react to external changes? As an example we demonstrated the expression of active DUBs by the pathogen *C. trachomatis*, as assessed by ABP labeling. Our results suggest that the cellular environment in which *Chlamydia* seeks to survive and expand necessitates the delivery of different bacterial countermeasures: not only is ChlaDUB1 expressed, but also ChlaDUB2, raising the interesting question of how these chlamydial enzymes differ in their substrate specificity from the host set of DUBs, and of course the identity of their preferred targets. In the absence of a genetic system with which to ablate either or both of the genes that encode the ChlaDUBs, their contribution to successful completion of the chlamydial life cycle will have to await the development of such tools.

Experimental Section

Preparation of G₃UbVME: Ubiquitin (1–75) N-terminally fused to a thrombin cleavage site followed by GGG (MGSSHHHHHSSGLVPRGGG) and C-terminally fused to an intein was cloned into pTYB2. The vector was transformed into BL21(DE3)pLysS. The ubiquitin-intein construct was expressed, purified and converted into the UbVME adduct as previously described for HA-tagged UbVME.^[6] Cleaving the thrombin sequence by using a Thrombin CleanCleave kit (Sigma–Aldrich) exposed the N-terminal Gly-Gly-Gly sequence.

Introduction of the biotin-cleavable linker: G₃UbVME (58 μ M final concentration) was incubated with Sortase A of *Staphylococcus aureus* [150 μ M final concentration, 4.5 \times stock in Tris (50 mM), pH 7.4, NaCl (150 mM)] and biotin-cleavable linker-LPETGG peptides 1–3 (0.5 mM final concentration, 10 \times stock, for synthesis see the Supporting Information) in sortase reaction buffer [Tris (50 mM), pH 7.4, NaCl (150 mM), CaCl₂ (10 mM)]. The resulting mixture was incubated at 37 °C for 3 h, acidified by the addition of 1 %

TFA in H₂O and purified by reversed-phase HPLC (30→45% B over 20 min, 3 mL min⁻¹; solvent A=0.1% aqueous trifluoroacetic acid, solvent B=MeCN). The resulting purified protein was neutralized with saturated aq. NaHCO₃, concentrated in vacuo, redissolved in H₂O and quantified by gel-electrophoresis. The protein was analyzed by LC-MS. Biotin-AZO-UbVME: t_R =7.76 min; linear gradient 5→45% B in 20 min; ESI-MS: m/z 10140 [M+H]⁺. Biotin-LEV-UbVME: t_R =7.57 min; linear gradient 5→45% B in 20 min; ESI-MS: m/z 10244 [M+H]⁺. Biotin-CLB-UbVME: t_R =7.30 min; linear gradient 5→45% B in 20 min; ESI-MS: m/z 9928 [M+H]⁺.

Antibodies, cell lines, constructs and reagents: Antibodies against YOD1 and PDI were raised in rabbits against purified whole protein and have been described.^[26] GAPDH antibody was obtained from Abcam. HEK293T and HeLa cells were purchased from the American Type Culture Collection. Cells were cultured in Dulbecco's modified Eagle's medium (DMEM).

The YOD1 construct in a pcDNA3.1(+) plasmid used for transfection experiments has been described.^[26] HEK293T cells were transiently transfected using Trans-IT (Takara Mirus Bio, Madison, WI) according to the manufacturer's instructions. Cycloheximide, anisomycin and chloramphenicol were obtained from Sigma-Aldrich.

Metabolic labeling, immunoprecipitations and SDS-PAGE: To achieve steady-state protein labeling, cells were incubated overnight with 200 μ Ci of [³⁵S]methionine/cysteine (PerkinElmer) per mL of methionine/cysteine-free DMEM supplemented with 10% dialyzed inactivated fetal serum (IFS) at 37 °C.

Cells were either lysed in NP40 lysis buffer [0.5% NP40, Tris-HCl (10 mM), NaCl (150 mM), MgCl₂ (5 mM), pH 7.4] supplemented with a complete protease inhibitor cocktail (Roche) where indicated, or in 1% SDS. Prior to immunoprecipitation, the SDS lysate was diluted to 0.1% SDS in NP40 lysis buffer.

Immunoprecipitation was performed using either streptavidin agarose (30 μ L, Sigma) or immobilized Protein A (IPA 300, 30 μ L, Repligen) with the relevant antibodies.

Protein samples were separated by SDS-PAGE and visualized by autoradiography.

Immunoblotting: Protein samples were separated by SDS-PAGE, blotted onto a PVDF membrane and probed with the relevant antibodies.

Probe delivery to semi-intact cells: Cells were collected on ice, and resuspended in 0.5 HBSS (100 μ L, containing purified PFO (0.1 μ M)—for preparation of PFO, see ref. [28]). After addition of the relevant probe, cells were incubated 37 °C for 30 min. After 30 min, the cells were returned to 4 °C and fractions were separated by centrifugation at 1150 g for 5 min. The supernatant fraction was withdrawn, after which the pellet fraction was washed in HBSS followed by another round of centrifugation.

Labeling of HeLa cells infected with *Chlamydia trachomatis* L2/434/Bu: HeLa cells and *C. trachomatis* L2/434/Bu were propagated and stored as previously described.^[11] [³⁵S]methionine/cysteine labeling and PFO permeabilization were performed analogous to the protocol described by Kleba et al.^[29] In brief, HeLa cells were infected with *Chlamydia* (multiplicity of infection (MOI) of 3–10), and cultured at 37 °C. After 20 h, the DMEM was replaced with methionine/cysteine-free DMEM supplemented with 10% dialyzed IFS, cycloheximide (225 μ g mL⁻¹), anisomycin (30 μ g mL⁻¹) and [³⁵S]methionine/cysteine (200 μ Ci). As a control, bacterial proteins synthesis was blocked with chloramphenicol (100 μ g mL⁻¹). The cells were

incubated at 37 °C for 4 h. AZO-UbVME was introduced by permeabilization with PFO as described in the general method above.

Mass-spectrometry-based analysis of the labeled proteins: Proteins were labeled, immunoprecipitated and released from the affinity matrix as described above. The retrieved proteins were separated on a gel and visualized using silver staining. Gel lanes were excised; the proteins were reduced, alkylated and digested with trypsin overnight at 37 °C. The resulting tryptic fragments were extracted, concentrated and separated using a Waters NanoAcquity HPLC equipped with a self-packed Jupiter C18 column (3 μ m, 0.075×10 mm) using standard reversed-phase gradients (isocratic 1% B buffer for 1 min, 250 nL min⁻¹ with increasing B buffer concentrations to 15% B at 14 min, 27% B at 21 min and 40% B at 24.5 min. Buffer A=1% formic acid in water and buffer B=1% formic acid in acetonitrile). The eluted peptides were analyzed using a Thermo LQT linear ion-trap mass spectrometer (nanospray configuration) operated in a data-dependent manner. The SEQUEST database was used to correlate the fragmentation spectra. Scaffold 3 was used to analyze and report the resulting data.

Acknowledgements

The authors would like to thank the members of the Ploegh lab for insightful discussions. We are grateful to Sumana Sanyal for providing recombinant PFO and to Herman Overkleeft and Paul Geurink for providing the levulinoyl-ester-based cleavable linker. David Rosmarin is acknowledged for setting up chlamydial cultures. M.D.W. is supported by a Rubicon grant from The Netherlands Organisation for Scientific Research and J.H.L.C. by the Boehringer Ingelheim Fonds. H.L.P. receives grants from the NIH (RO1 AI087879 and RO1 AI033456).

Keywords: activity-based probes • *Chlamydia trachomatis* • cleavable linkers • deubiquitylating enzymes • ubiquitins

- [1] D. Komander, M. Rape, *Annu. Rev. Biochem.* **2012**, *81*, 203–229.
- [2] S. M. B. Nijman, M. P. A. Luna-Vargas, A. Velds, T. R. Brummelkamp, A. M. G. Dirac, T. K. Sixma, R. Bernards, *Cell* **2005**, *123*, 773–786.
- [3] B. M. Kessler, M. J. Edelmann, *Cell Biochem. Biophys.* **2011**, *60*, 21–38.
- [4] M. E. Sowa, E. J. Bennett, S. P. Gygi, J. W. Harper, *Cell* **2009**, *138*, 389–403.
- [5] R. Ernst, J. H. L. Claessen, B. Mueller, S. Sanyal, E. Spooner, A. G. van der Veen, O. Kirak, C. D. Schlieker, W. A. Weihofen, H. L. Ploegh, *PLoS Biol.* **2011**, *8*, e1000605.
- [6] A. Borodovsky, H. Ovaa, N. Kolli, T. Gan-Erdene, K. D. Wilkinson, H. L. Ploegh, B. M. Kessler, *Chem. Biol.* **2002**, *9*, 1149–1159.
- [7] J. Hemelaar, P. J. Galaray, A. Borodovsky, B. M. Kessler, H. L. Ploegh, H. Ovaa, *J. Proteome Res.* **2004**, *3*, 268–276.
- [8] J. F. McGouran, H. B. Kramer, M. M. Mackeen, K. di Gleria, M. Altun, B. M. Kessler, *Org. Biomol. Chem.* **2012**, *10*, 3379–3383.
- [9] A. de Jong, R. Merks, I. Berlin, B. Rodenko, R. H. M. Wijdevan, D. El Attmoui, Z. Yalçin, C. N. Robson, J. J. Neefjes, H. Ovaa, *ChemBioChem* **2012**, *13*, 2251–2258.
- [10] K. R. Love, R. K. Pandya, E. Spooner, H. L. Ploegh, *ACS Chem. Biol.* **2009**, *4*, 275–287.
- [11] S. Misaghi, Z. R. Balsara, A. Catic, E. Spooner, H. L. Ploegh, M. N. Starnbach, *Mol. Microbiol.* **2006**, *61*, 142–150.
- [12] E.-M. Frickel, V. Quesada, L. Muething, M.-J. Gubbels, E. Spooner, H. Ploegh, K. Artavanis-Tsakonas, *Cell. Microbiol.* **2007**, *9*, 1601–1610.
- [13] K. Artavanis-Tsakonas, W. A. Weihofen, J. M. Antos, B. I. Coleman, C. A. Comeaux, M. T. Duraisingh, R. Gaudet, H. L. Ploegh, *J. Biol. Chem.* **2010**, *285*, 6857–6866.

- [14] G. Le Negrate, A. Krieg, B. Faustin, M. Loeffler, A. Godzik, S. Krajewski, J. C. Reed, *Cell. Microbiol.* **2008**, *10*, 1879–1892.
- [15] B. Domon, R. Aebersold, *Nat. Biotechnol.* **2010**, *28*, 710–721.
- [16] A. Dirksen, S. Yegneswaran, P. E. Dawson, *Angew. Chem.* **2010**, *122*, 2067–2071; *Angew. Chem. Int. Ed.* **2010**, *49*, 2023–2027.
- [17] S. H. L. Verhelst, M. Fonovic, M. Bogoy, *Angew. Chem.* **2007**, *119*, 1306–1308; *Angew. Chem. Int. Ed.* **2007**, *46*, 1284–1286.
- [18] P. P. Geurink, B. I. Florea, N. Li, M. D. Witte, J. Verasdonck, C.-L. Kuo, G. A. van der Marel, H. S. Overkleef, *Angew. Chem.* **2010**, *122*, 6954–6957; *Angew. Chem. Int. Ed.* **2010**, *49*, 6802–6805.
- [19] A. Iphöfer, A. Kummer, M. Nimtz, A. Ritter, T. Arnold, R. Frank, J. van den Heuvel, B. M. Kessler, L. Jänsch, R. Franke, *ChemBioChem* **2012**, *13*, 1416–1420.
- [20] J. M. Antos, G.-L. Chew, C. P. Guimaraes, N. C. Yoder, G. M. Grotenbreg, M. W. Popp, H. L. Ploegh, *J. Am. Chem. Soc.* **2009**, *131*, 10800–10801.
- [21] T. Yamamoto, T. Nagamune, *Chem. Commun.* **2009**, 1022–1024.
- [22] M. D. Witte, J. J. Cragnolini, S. K. Dougan, N. C. Yoder, M. W. Popp, H. L. Ploegh, *Proc. Natl. Acad. Sci. USA* **2012**, *109*, 11993–11998.
- [23] S. I. van Kasteren, H. B. Kramer, H. H. Jensen, S. J. Campbell, J. Kirkpatrick, N. J. Oldham, D. C. Anthony, B. G. Davis, *Nature* **2007**, *446*, 1105–1109.
- [24] H. Neumann, K. Wang, L. Davis, M. Garcia-Alai, J. W. Chin, *Nature* **2010**, *464*, 441–444.
- [25] S. Misaghi, P. Galdy, W. J. N. Meester, H. Ovaa, H. L. Ploegh, R. Gaudet, *J. Biol. Chem.* **2005**, *280*, 1512–1520.
- [26] R. Ernst, B. Mueller, H. L. Ploegh, C. Schlieker, *Mol. Cell* **2009**, *36*, 28–38.
- [27] G. Budin, M. Moune-Dimala, G. Leriche, J.-M. Saliou, J. Papillon, S. Sanglier-Cianféran, A. Van Dorsselaer, V. Lamour, L. Brino, A. Wagner, *ChemBioChem* **2010**, *11*, 2359–2361.
- [28] S. Sanyal, J. H. L. Claessen, H. L. Ploegh, *J. Biol. Chem.* **2012**, *287*, 23594–23603.
- [29] B. Kleba, R. S. Stephens, *Infect. Immun.* **2008**, *76*, 4842–4850.
- [30] A. Boeddrich, S. Gaumer, A. Haacke, N. Tzvetkov, M. Albrecht, B. O. Evert, E. C. Müller, R. Lurz, P. Breuer, N. Schugardt, *EMBO J.* **2006**, *25*, 1547–1558.
- [31] S. Virdee, Y. Ye, D. P. Nguyen, D. Komander, J. W. Chin, *Nat. Chem. Biol.* **2010**, *6*, 750–757.
- [32] Y.-Y. Yang, J. M. Ascano, H. C. Hang, *J. Am. Chem. Soc.* **2010**, *132*, 3640–3641.

Received: November 9, 2012

Published online on January 18, 2013